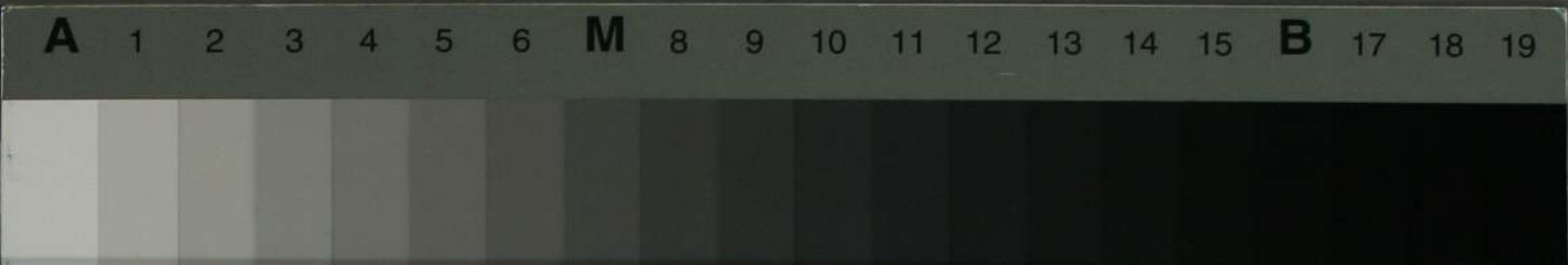


十二支酒魚画並歌

特別  
~4  
8123





Handwritten vertical text on the left side of the page.

Three columns of handwritten vertical text in the center of the page.









Handwritten text in cursive script, likely a signature or title, located on the left side of the page.

Vertical columns of handwritten text in cursive script, positioned above the central figure.



Vertical columns of handwritten text in cursive script, located on the right side of the page.





Handwritten notes in Arabic script, including a diagonal line and several lines of text.

Handwritten notes in Arabic script, including a vertical line and several lines of text.

Handwritten notes in Arabic script, including a vertical line and several lines of text.



Two columns of handwritten text in Arabic script, written vertically.





二日解

二日解

二日解

二日解

二日解

二日解

二日解



二日解

二日解

二日解

二日解



Handwritten vertical text on the far right edge of the page.



Handwritten vertical text in the upper right quadrant.

Handwritten vertical text below the upper right text.

酒也 (Sake)

Handwritten vertical text below the 'Sake' text.

Handwritten vertical text in the center-right area.

Handwritten vertical text below the center-right text.

Handwritten vertical text in the center area.

Handwritten vertical text below the center text.



2

Handwritten vertical text in the upper left quadrant.

Handwritten vertical text below the upper left text.

Handwritten vertical text in the lower left area.

Handwritten mark or character at the bottom left corner.



いと酒の

酒のいと

馬の  
美



馬の  
美

馬の  
美

乃ら

乃ら





Handwritten text in three vertical columns on the left side of the page.

Handwritten text in four vertical columns in the upper middle section.

い  
や  
酒  
の



Handwritten text in two vertical columns in the lower middle section.





龍  
龍

龍

龍



心  
心

心  
心

心  
心

心  
心

心  
心

心  
心



解  
解

解  
解

解  
解

解

解  
解



い



解  
あ

い

い

い

い

い



い

い

い



解

床

婦

居

屋

婦

神

の

意

子

子



二

子

子





醉

好

床

魚

子

畫



丁

好

大

山

野

乃

之

畫成十二支者 予既愁

化裝焉或著繡衣或操

器物殆似學人間之遊



畫成十二支者予既愆

化裝焉或著繡衣或操

器物殆似學人間之遊

樂傷人見而相笑曰今是

逸真可與娛各則戲

添荒唐之詞又曰後見

焉者因循共同遨遊

歎樂乎千姝愆壽

於萬歲有老之將至

乎云尔

寶永三丙戌歲孟春吉社日

正竹書

