



古
清
字
文

チ 6
488



488

正德八年五月...
 正德八年五月...
 正德八年五月...
 正德八年五月...

Handwritten text in white ink on a dark background, written in a highly stylized cursive script. The text is arranged in several vertical columns, with some characters appearing as large, bold strokes. The script is characteristic of traditional Chinese calligraphy, possibly in a style like cursive script (caoshu).



門 子 6
號 488
卷

草書行書

草書行書

草書行書

草書行書

草書行書

草書行書

草書行書

草書行書

草書行書

草書行書

草書行書

草書行書

Handwritten text in a cursive script, likely Arabic or Persian, on the left page of an open manuscript. The text is written in white ink on a dark, aged parchment background. It consists of several lines of flowing, interconnected characters, characteristic of the Nasta'liq style. The script is dense and fills most of the page area.

Handwritten text in a cursive script, likely Arabic or Persian, on the right page of an open manuscript. The text is written in white ink on a dark, aged parchment background. It consists of several lines of flowing, interconnected characters, characteristic of the Nasta'liq style. The script is dense and fills most of the page area.

Handwritten text in a cursive script, likely a form of Arabic or Persian calligraphy, written on the left page of an open book. The text is arranged in several vertical columns, starting from the right side of the page and moving towards the left. The ink is dark, and the background is a lighter, aged paper.

Handwritten text in a cursive script, likely a form of Arabic or Persian calligraphy, written on the right page of an open book. The text is arranged in several vertical columns, starting from the right side of the page and moving towards the left. The ink is dark, and the background is a lighter, aged paper.

Handwritten text in a cursive script, likely a form of Arabic or Persian calligraphy, written on the left page of an open book. The text is arranged in several vertical columns, starting from the right side of the page and moving towards the left. The ink is dark, and the background is a lighter, aged paper.

Handwritten Japanese text in cursive (sōsho) style, spanning two pages of a book. The text is written in white ink on a dark, textured background. The characters are highly stylized and fluid, characteristic of the cursive script. The text is arranged in vertical columns, reading from right to left across the pages. The right page contains approximately 10 columns of text, while the left page contains approximately 8 columns. The overall appearance is that of a traditional Japanese manuscript or calligraphy work.

Handwritten cursive text on the left side of the left page.

Handwritten cursive text in the middle of the left page, possibly a signature or a specific name.

Handwritten cursive text on the right side of the left page, continuing the flow of the document.

Handwritten cursive text on the right page, featuring several lines of dense, flowing script.

Handwritten cursive text at the bottom right of the right page, possibly a signature or a date.

Handwritten musical notation on the left page, featuring a treble clef and a key signature of one sharp (F#). The notation consists of a single melodic line with various note values and rests, written in a cursive style.

Handwritten musical notation on the right page, featuring a treble clef and a key signature of one sharp (F#). The notation consists of a single melodic line with various note values and rests, written in a cursive style.

Handwritten text in a cursive script, likely Arabic or Persian, written on a dark background. The text is arranged in several lines, with some characters appearing to be larger or more prominent than others, possibly indicating a title or a specific section. The script is highly stylized and fluid.

Handwritten text in a cursive script, likely Arabic or Persian, written on a dark background. The text is arranged in several lines, continuing the style of the left page. The script is highly stylized and fluid, with some characters appearing to be larger or more prominent than others, possibly indicating a title or a specific section.

Handwritten text in a cursive script, likely a historical document or manuscript. The text is written in a dark ink on a light-colored paper. The script is highly stylized and difficult to decipher. The text is arranged in several lines, with some words appearing to be "P...".

Handwritten text in a cursive script, likely a historical document or manuscript. The text is written in a dark ink on a light-colored paper. The script is highly stylized and difficult to decipher. The text is arranged in several lines, with some words appearing to be "P...".

Handwritten text in cursive script, likely a letter or document, written on the left page of the manuscript.

Handwritten text in cursive script, continuing from the left page, written on the right page of the manuscript.

Handwritten mark or character at the top of the right page.

Handwritten text in cursive script, possibly a signature or a specific section of the document, located in the lower part of the right page.

Handwritten mark or character at the bottom of the right page.

Handwritten text in a cursive script, likely Arabic or Persian, on the left page. The text is arranged in several lines, flowing from right to left. The ink is light brown or gold, contrasting with the dark background. The script is highly stylized and fluid.

Handwritten text in a cursive script, likely Arabic or Persian, on the right page. The text is arranged in several lines, flowing from right to left. The ink is light brown or gold, contrasting with the dark background. The script is highly stylized and fluid.

Handwritten text in a cursive script, possibly a signature or a specific phrase, located at the top of the right page.

Main body of handwritten text on the right page, consisting of several lines of cursive script.

Main body of handwritten text on the left page, consisting of several lines of cursive script.

Handwritten text in a cursive script, likely Arabic or Persian, written on the left page of an open manuscript. The text is arranged in several lines, flowing from right to left. The ink is dark, and the background is a light, aged paper.

Handwritten text in a cursive script, likely Arabic or Persian, written on the right page of an open manuscript. The text is arranged in several lines, flowing from right to left. The ink is dark, and the background is a light, aged paper.

文化三年丙寅春二月

書肆

日本橋通三丁目

若川六左衛門

雙松堂息純藏



湯島天神切通坂上

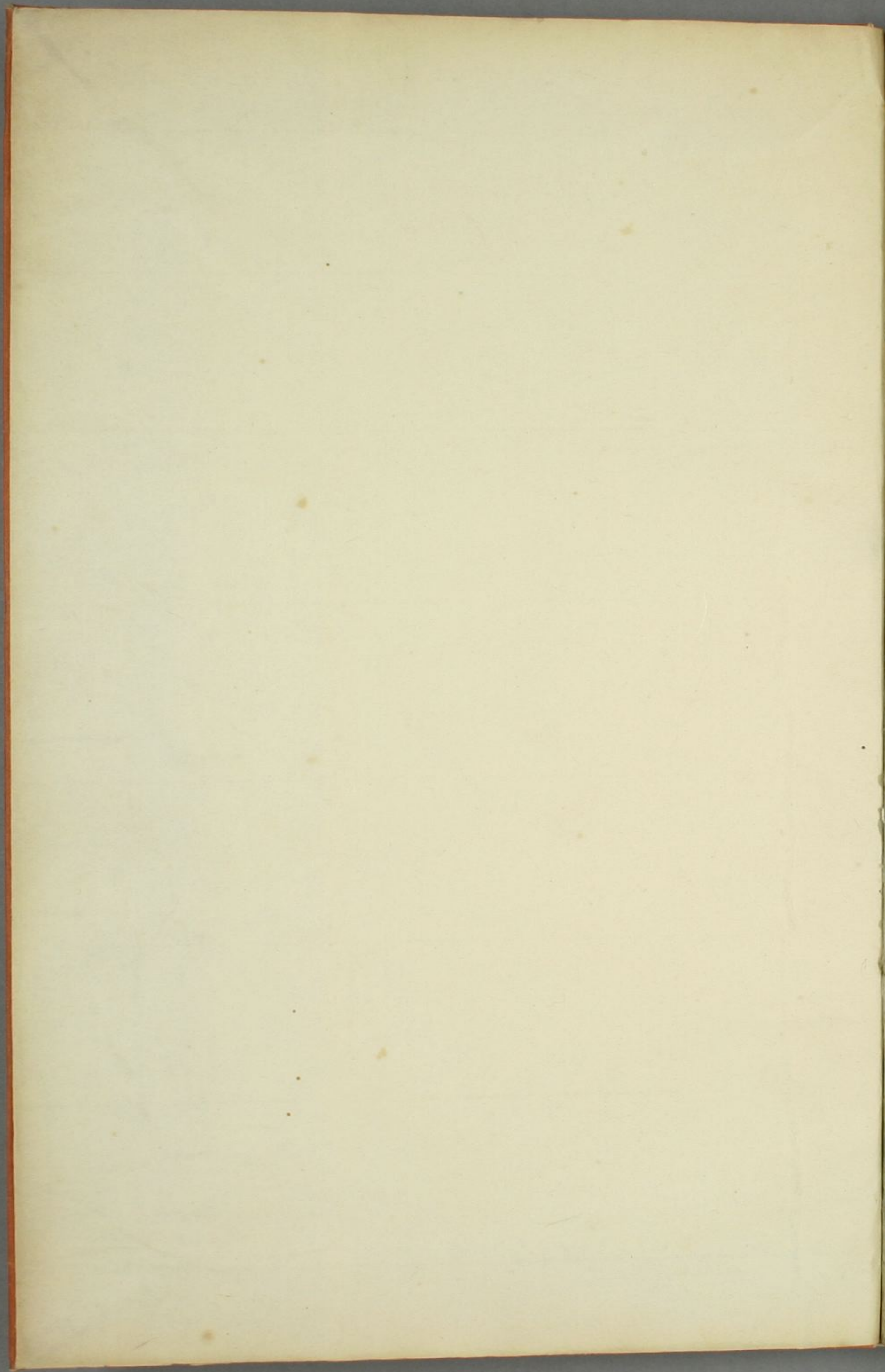
書肆

越中屋文次郎

赤堀秀光

大流之帖紙精於臨賞其真能
無之真偽或於討論不可得之
源流嘗不別其洲往來古冊惟
實左生之真蹟也而冊之別厚
惟是少之乎族不控可帖之
古之取控別之如取當之也也
聊識流與之詞以歸其家於云
文化三年丙寅二月
保田亮卿識

代



Handwritten text in vertical columns on aged, stained paper. The characters are faint and difficult to decipher, but appear to be in a traditional Chinese script. The text is arranged in approximately 10 columns, with some characters appearing to be bleed-through from the reverse side of the page.

