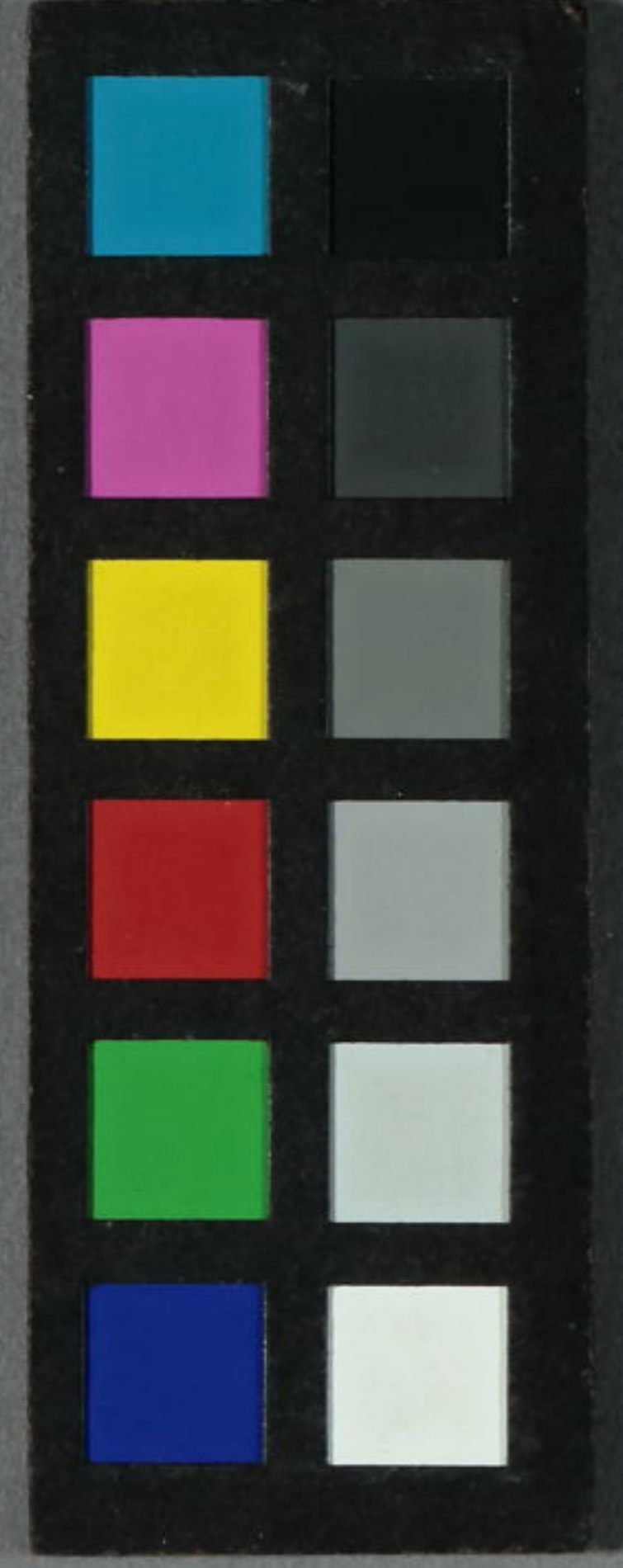


續膝栗主十一編
下



そりちぐ入るる人びらにせいのまあり

そりちぐ入るる人びらにせいのまあり

あの人びらにせいのまあり

あの人びらにせいのまあり

あの人びらにせいのまあり

あの人びらにせいのまあり

あの人びらにせいのまあり

あの人びらにせいのまあり

あの人びらにせいのまあり

あの人びらにせいのまあり

あの人びらにせいのまあり

あの人びらにせいのまあり

あの人びらにせいのまあり

あの人びらにせいのまあり

あの人びらにせいのまあり

か
い
ふ
と
ち
く
や
新
馬
の
相
作
本
曾
上
松
翠
香



下
の
花
の
本
曾
河
の
新
馬
の
相
作
本
曾
下
古
狂



ついでに... Summit

ついでに... サマ

ついでに... サマ

ついでに... サマ

ついでに... サマ

ついでに... サマ

ついでに... サマ

ついでに... サマ

ついでに... サマ

ついでに... サマ

ついでに... サマ

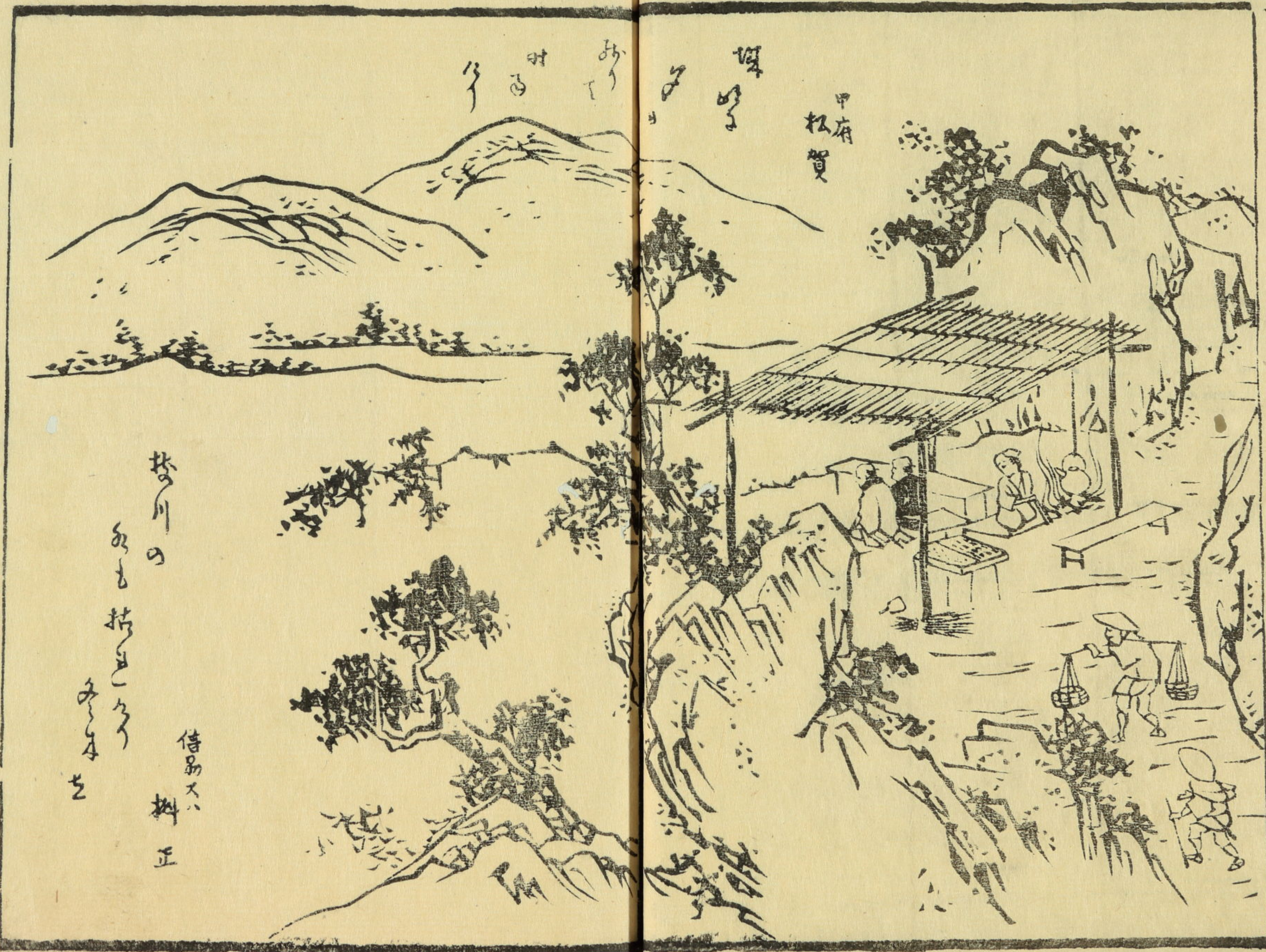
ついでに... サマ

ついでに... サマ

ついでに... サマ

ついでに... サマ

ついでに... サマ



山子 山子

甲府
松質

松川の

あも松のこころ

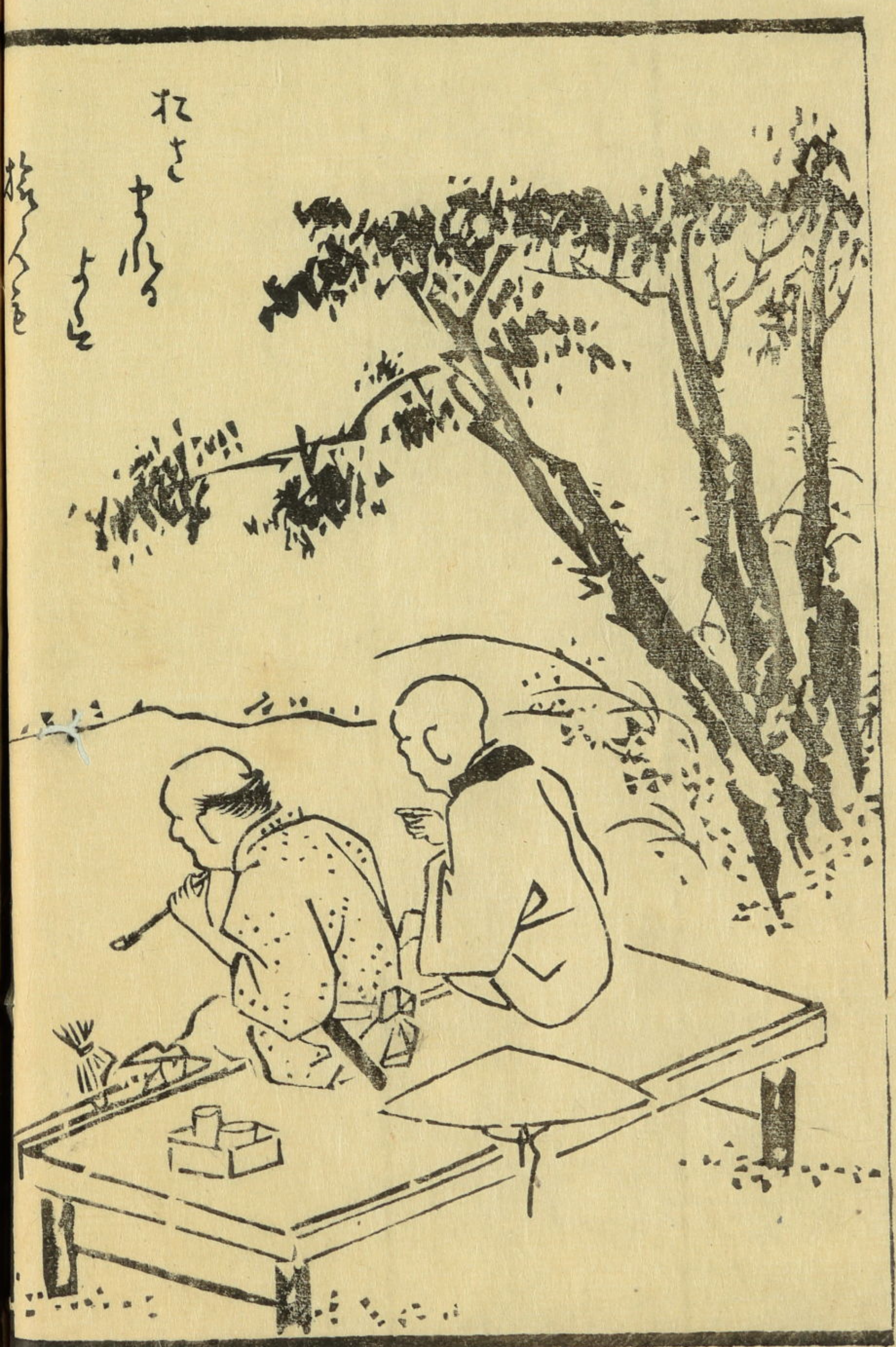
あま

借易スハ
料正



琢斎

ま
ゆ
ま
ま
ま
ま



ねさ

ま
ま
ま
ま
ま
ま

遊舎
東渡

ふん
い

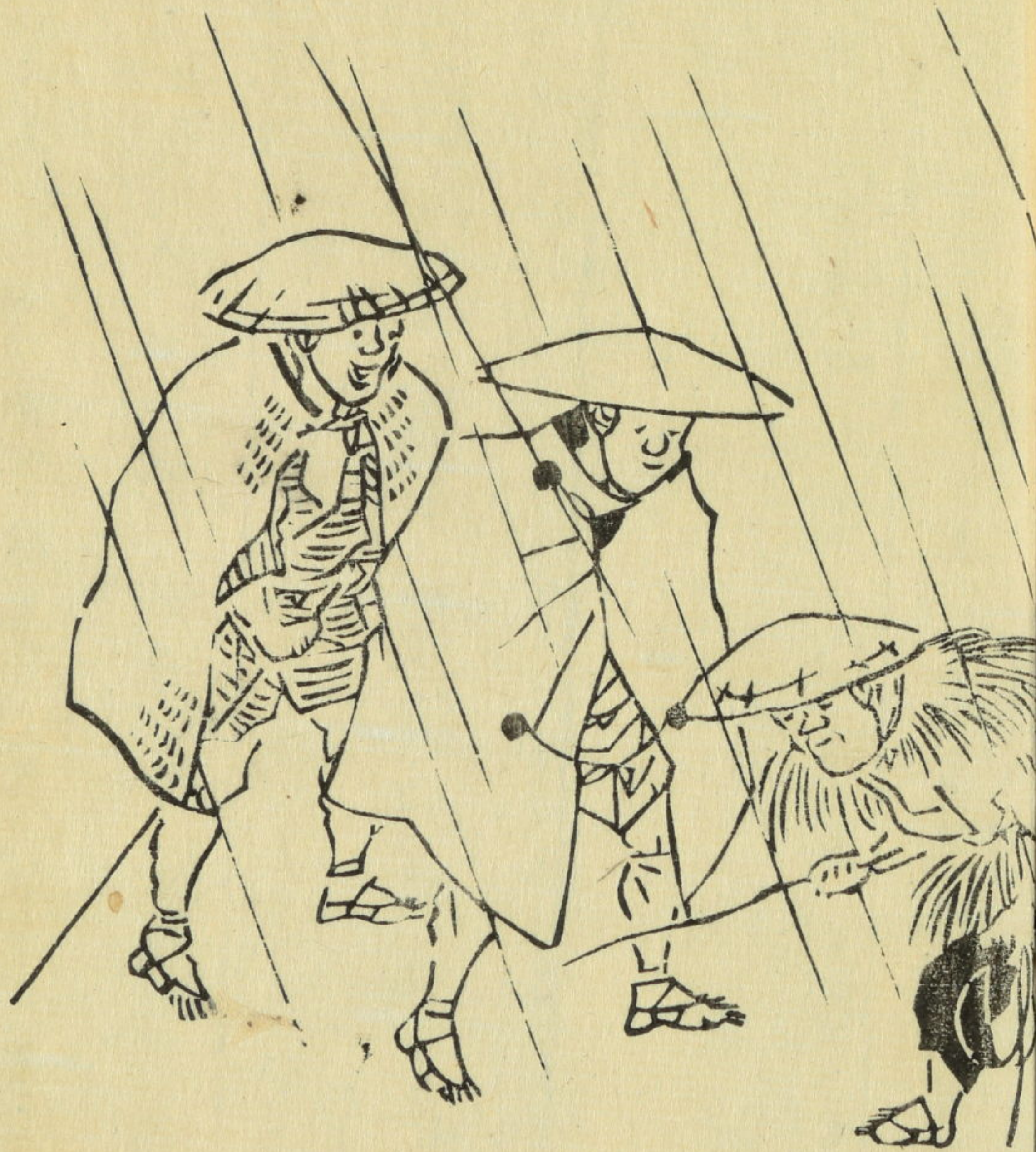
かの

ま
ま

あ
れ

う
ち

い



芦田
二

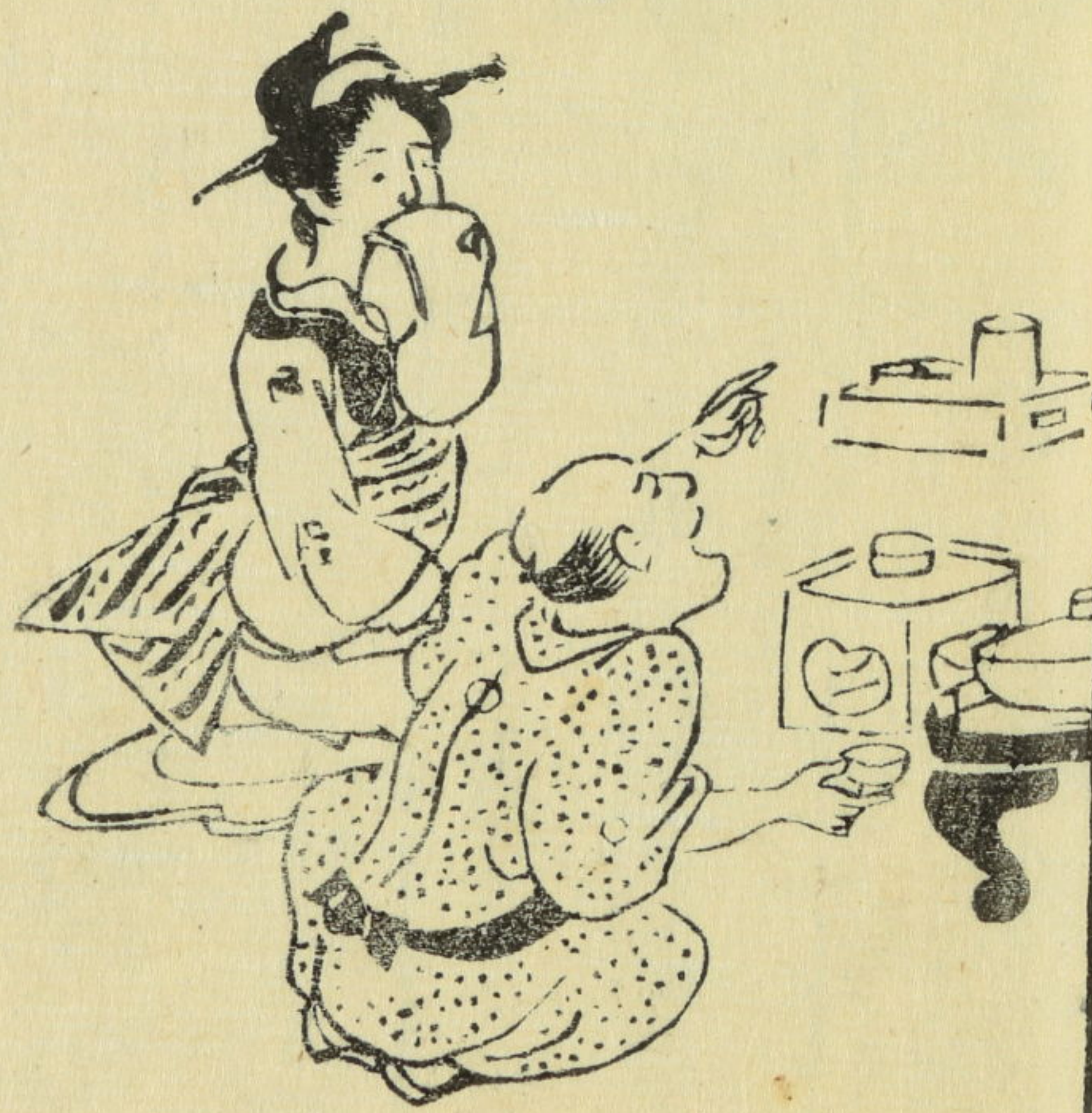
ま
ま
ま
ま
ま
ま



Handwritten text in Arabic script, spanning two pages of an open manuscript. The text is written in a cursive style and includes several lines of prose. The right page contains approximately 12 lines of text, while the left page contains approximately 10 lines. The script is dense and fills most of the page area. There are some small annotations or corrections visible, such as a small 'ت' (Ta) above a line on the right page and a small 'هـ' (Ha) above a line on the left page. The ink is dark and the paper shows signs of age and wear.

十通全

酒の
乃
癡
ひ
か
と



之
味
線
の
と
か
と
い
く
も



Handwritten text in a cursive script, likely a form of shorthand or a specific dialect. The text is arranged in several lines across two pages of a notebook. The script is dense and fluid, with many loops and flourishes. There are several small annotations or corrections written above or below the main lines of text. The overall appearance is that of a personal or working manuscript.

Handwritten text in a cursive script, likely a historical document or manuscript. The text is written in a dark ink on aged paper. It consists of several lines of text, with some characters appearing to be in a different script or dialect. The text is arranged in a vertical column on the right page.

Handwritten text in a cursive script, likely a historical document or manuscript. The text is written in a dark ink on aged paper. It consists of several lines of text, with some characters appearing to be in a different script or dialect. The text is arranged in a vertical column on the left page.

Handwritten text in a cursive script, likely a historical or administrative document. The text is arranged in approximately 12 horizontal lines across the page. The script is dense and characteristic of early modern European cursive. The document appears to be a record or a list of items, possibly related to a military or administrative context, given the use of terms like 'Krieg' (war) and 'Soldat' (soldier) in some of the legible words. The text is written in dark ink on aged, slightly yellowed paper. The lines are roughly parallel and fill most of the page area.



Handwritten text in a cursive script, likely a historical document or manuscript. The text is written in a dark ink on aged, yellowed paper. It consists of several lines of text, with some words and phrases appearing to be in a non-Latin script, possibly representing a specific dialect or a mix of languages. The handwriting is fluid and somewhat irregular, characteristic of a personal or working manuscript. The text is arranged in a single column on each page, with some lines starting with a small mark that could be a paragraph indicator or a specific symbol. The overall appearance is that of a historical record or a collection of notes.

おまのしこ... せりまのり中せり
トおまのしこ... せりまのり中せり

いん幸庄孫より板をい宿まで王子まのりし
江戸島の記ありあすまう... 葉箱や身あり... 葉
葉ありし... 葉箱や身あり... 葉

本所相生町壹丁目
紙屋利助板

續々栗毛十一編下冊終

