

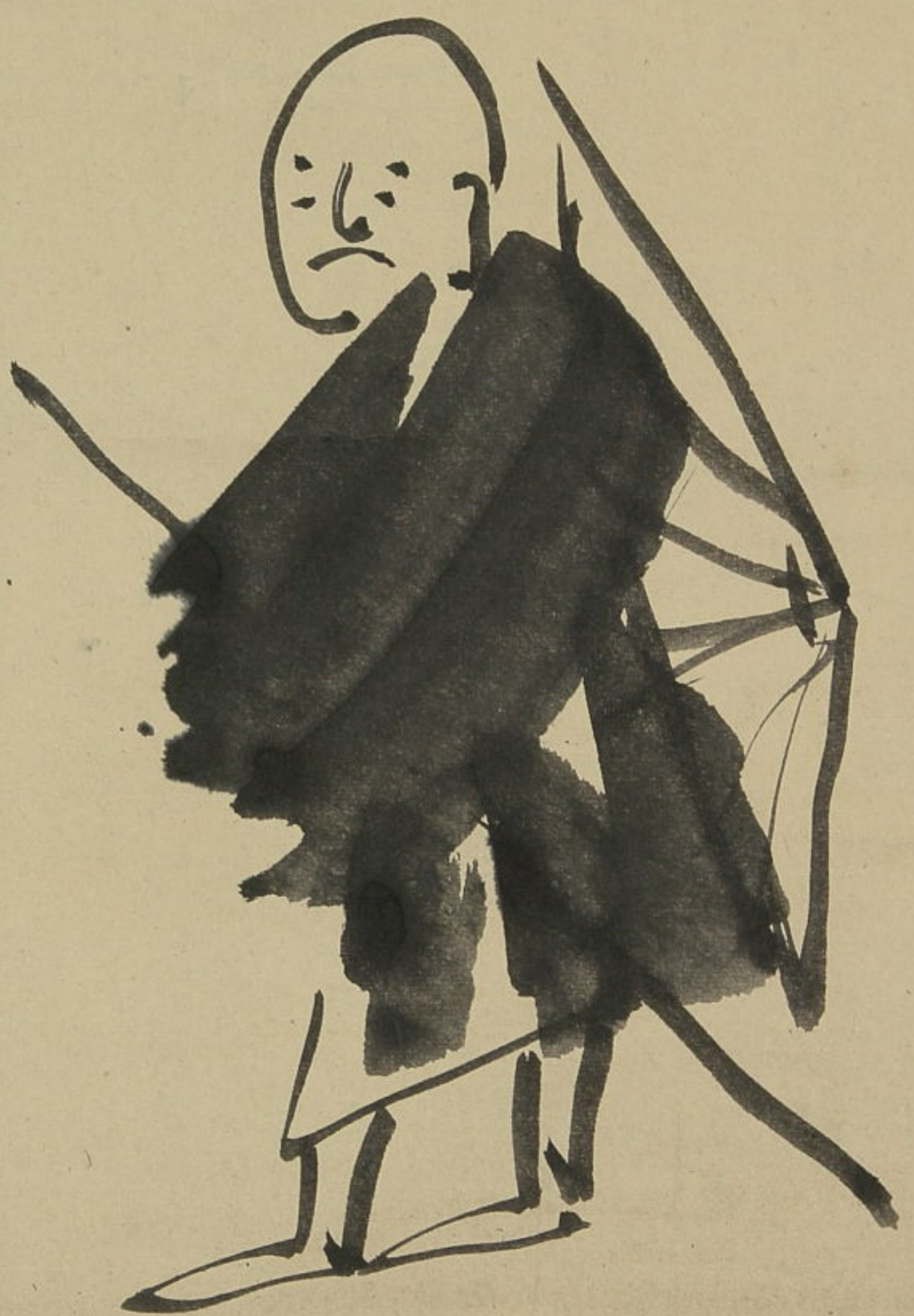


秋の雨を待て

高き也

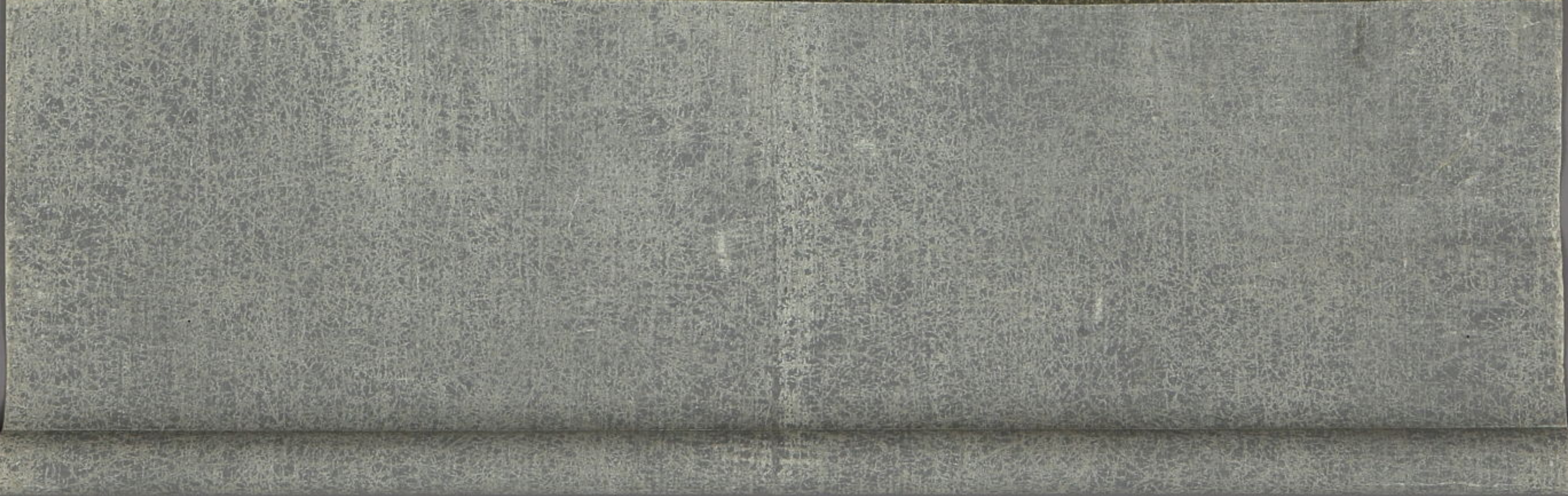
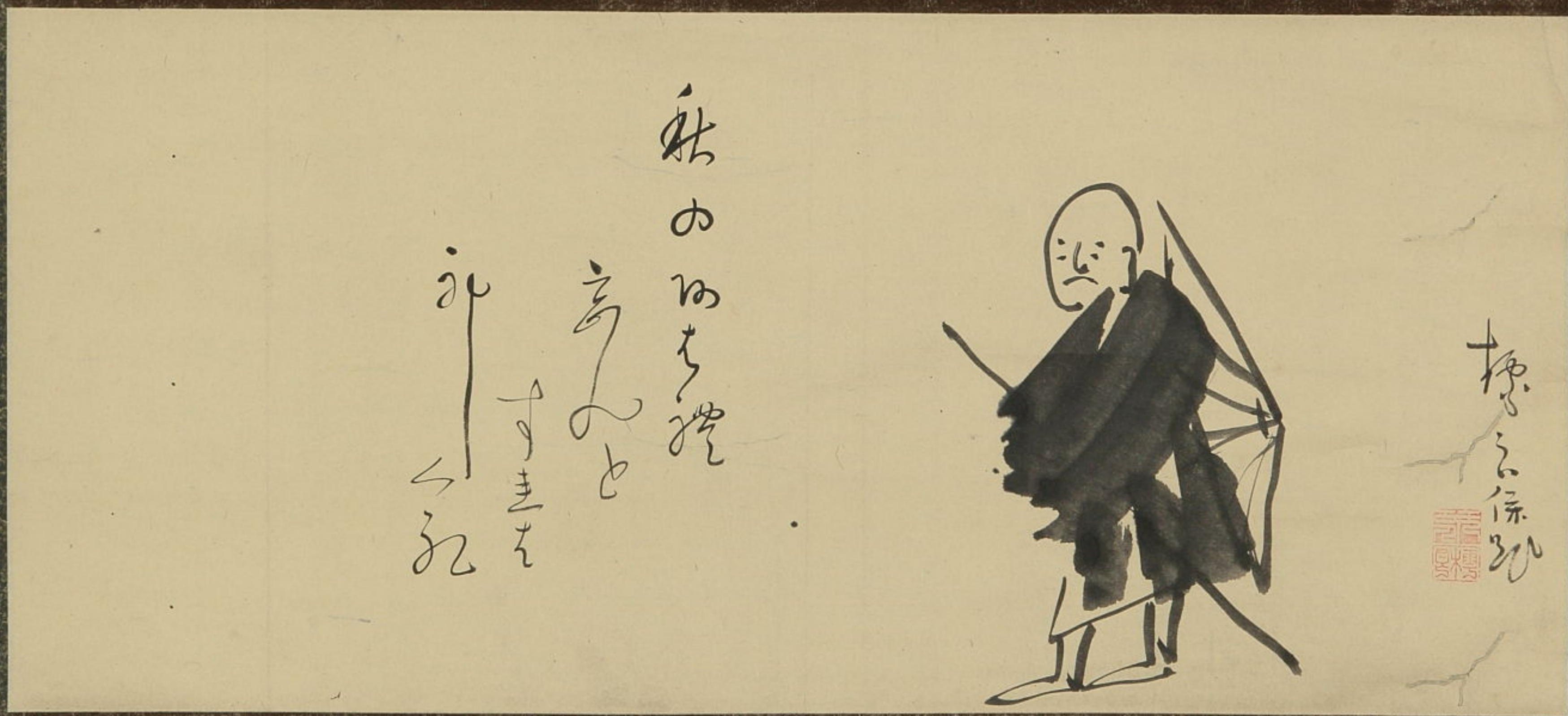
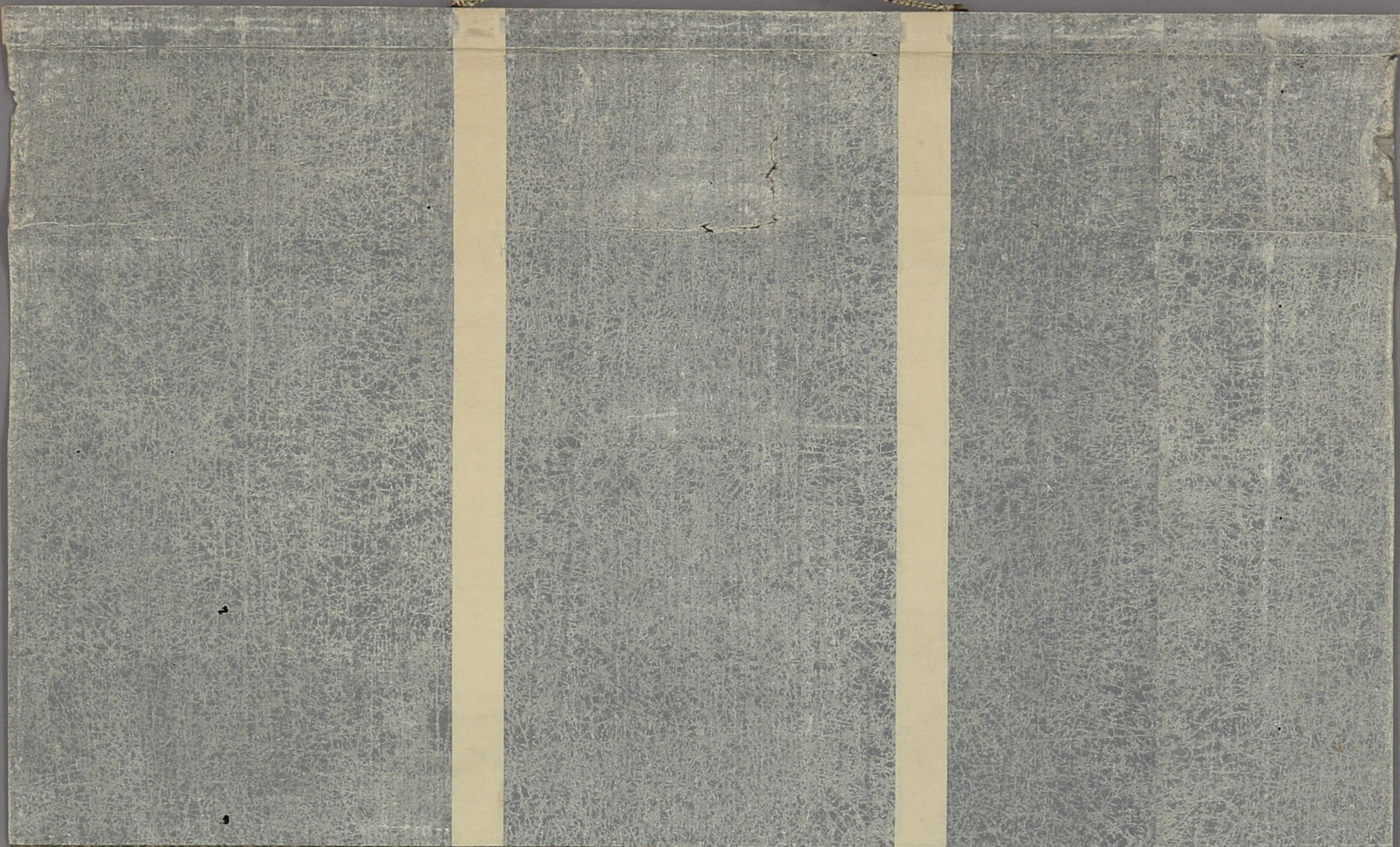
すまを

礼



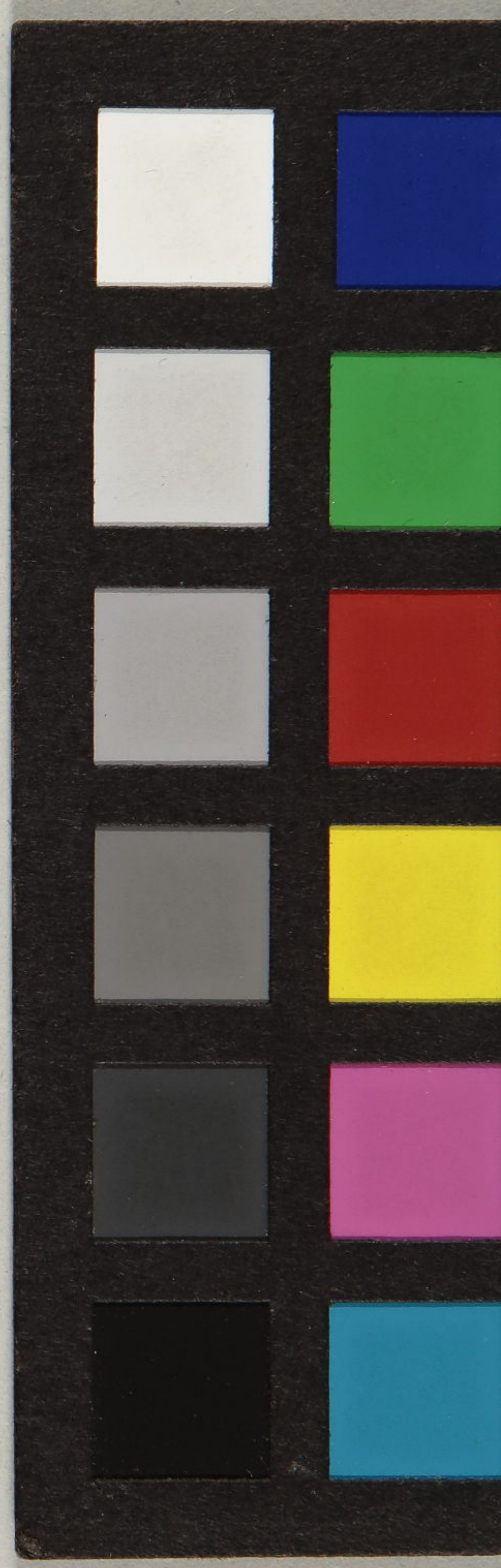
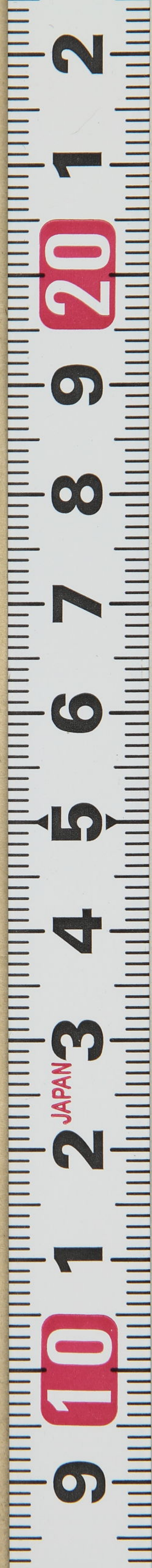
秋の雨を待て







Handwritten Japanese calligraphy in cursive style (sōsho). The characters are arranged vertically and read from right to left as: 上 (top), 心 (heart), 一 (one), 家 (house), 記 (record). A faint, light-colored ink drawing of a branch or root is visible in the background behind the characters.





標
上
画
賛

