

符合泉志 三編

完



題言

古錢之存于世者自半兩五銖以至歷代
所造貨品衆多其年歲久遠者古色
可愛而世之好之者唯貴至希少不
必問季代遠近也及至近世其風一變
專於趙宋所鑄論其多寡異同以為
貴賤故者辨文字同而字直則否相
什佰千萬焉志云一豐舍主人自少從



予於斯多經年。所目熟。心悟。蓋極精。微頃。幸逐續。若符合。泉志。三編。類聚。異同。剖析。毫釐。鑿余。閱之。茫乎。不能。辨別。然同好者。皆服。吾精。味。之。極。之。必其鑒識。必有。過人。在矣。其子秀。言。從余。學書。年乞。一。云。因題。其端。如此。

己丑長至日 盤桓子易書



凡例

一此書二載ハ。雜錢ノ中ノ稀品ナリ。此編ノ一二ノ位ナルモノハ。世ニ得ガタキ珍品ナリ。初編。二編。ニ著ストコロノ一ノ位ハ。此編ノ五ノ位ニアタリ。二ノ位ハ。六ノ位ニアタルト知ベシ。其余ハ。是ニ准ズベシ。一初編。二編。三編。ニ。數品著ストイヘドモ。猶モレタルガ多キハ。後編ニ出スベシ。一淳化元宝。縮水ハ。世ニ稀ナリ。近頃ハ。贗物ニ妙作ナルモノアリ。ヨク鑑定スベシ。一元豐通寶。縮字四對ヲ圖ス。又廣郭。仰元。昂元ノ篆書ナルハ。見オヨベドモ。真書ナルハ。未見。

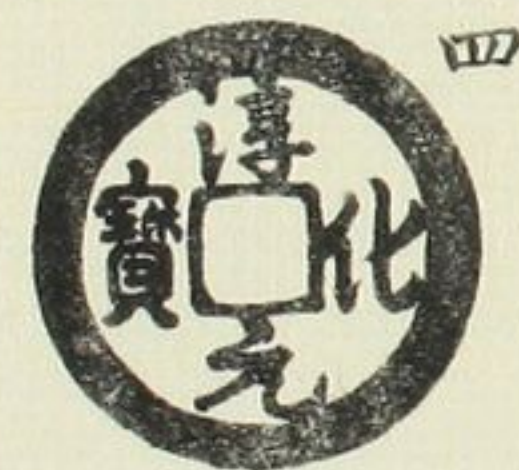
一同曲元四對ヲ圖ス。猶小異ノモノ多シ
 一元祐通宝大様。世ニ狭通ト稱ヘキタルモノヲ圖シテ縮
 通ト改メ。降祐ト稱ヘキタルモノヲ圖シテ狭通ト改メ。又
 アラタニ一對ヲ圖シテ。降祐トナツク
 一政和通宝。御書文政ト。楷書道勁トハ。オナジ篆書ニシテ。
 初心ノ輩ハ。見ワケガタカルベシ。郭ノ大小ヲ以テコ、ロ
 ウベシ

宋朝符合錢三編

淳化元宝

大字

大宝



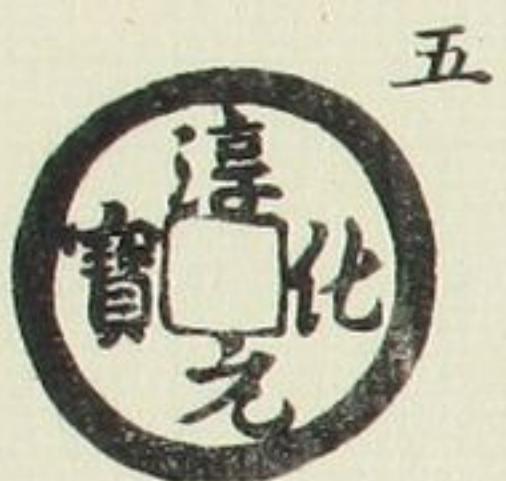
縮水



廣穿



接郭

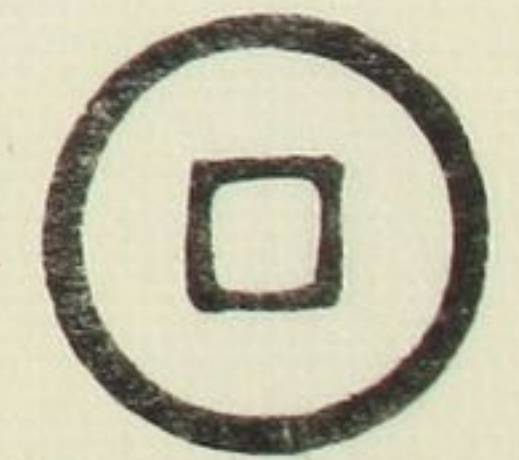
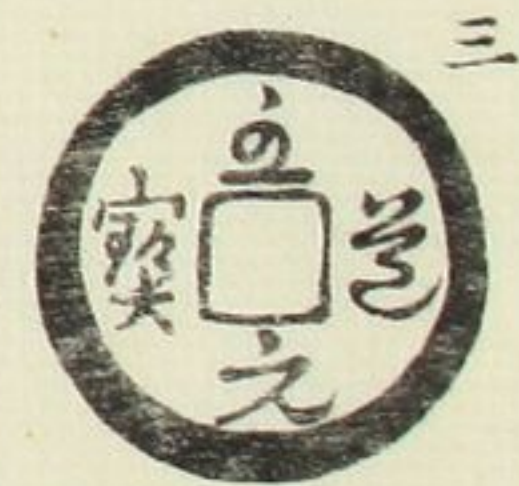
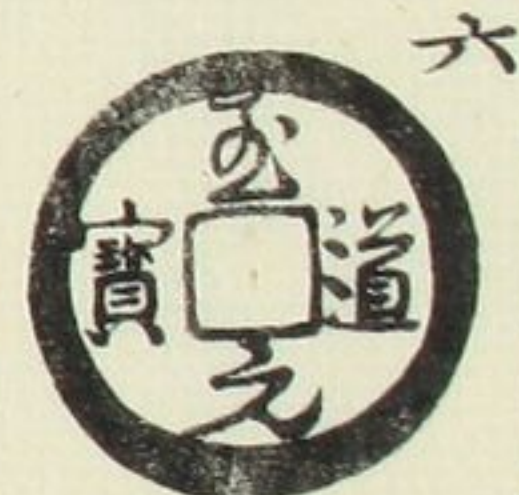
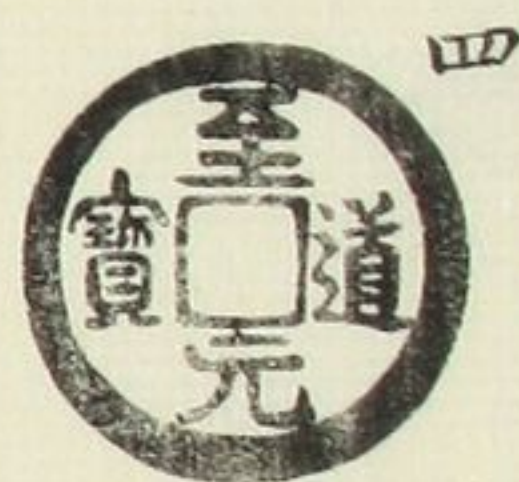


反字



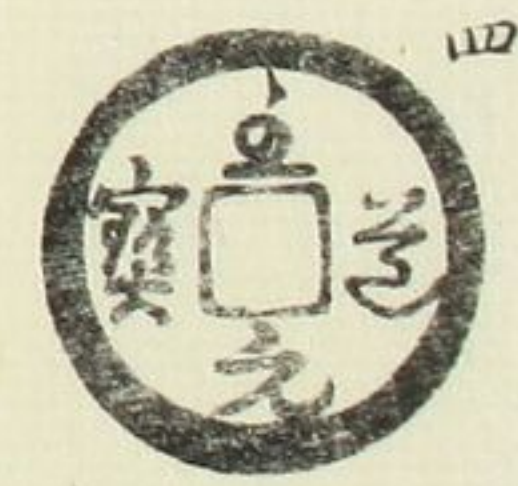
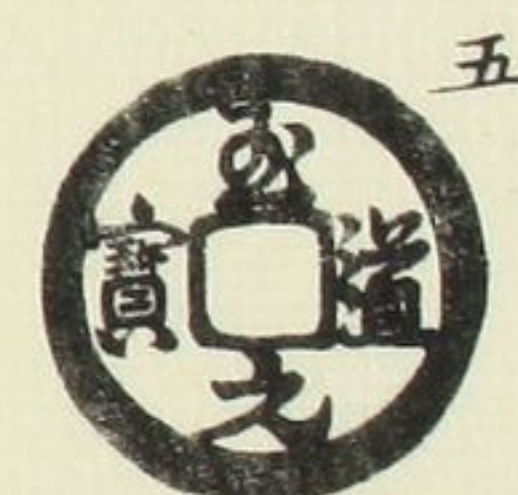
至道元宝

背異 緣



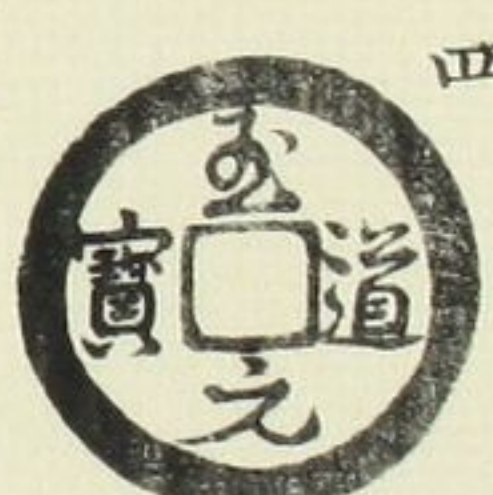
同上

背廣郭

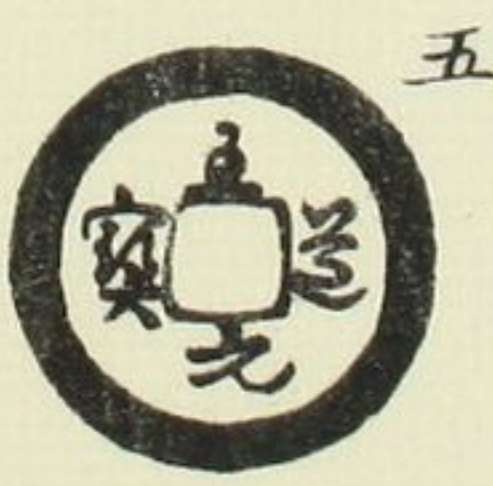
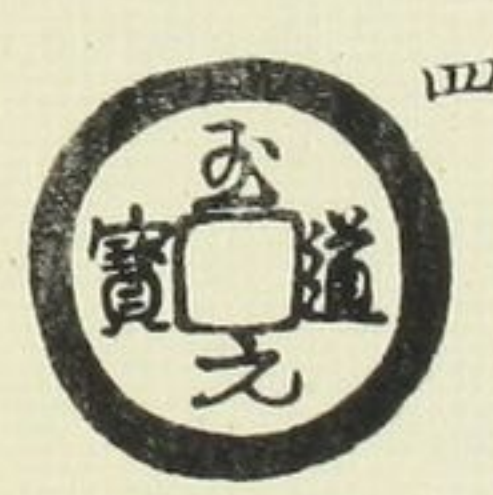


同上

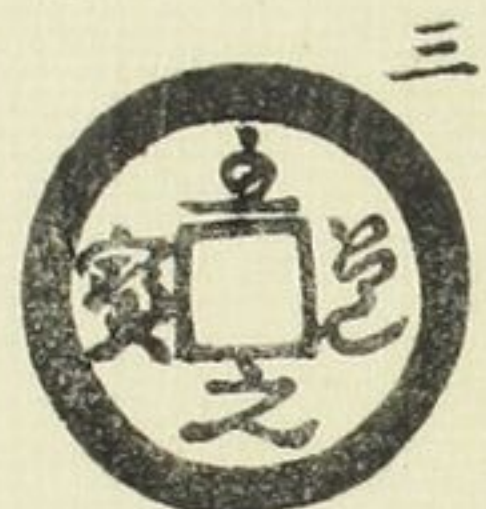
昂元



接郭

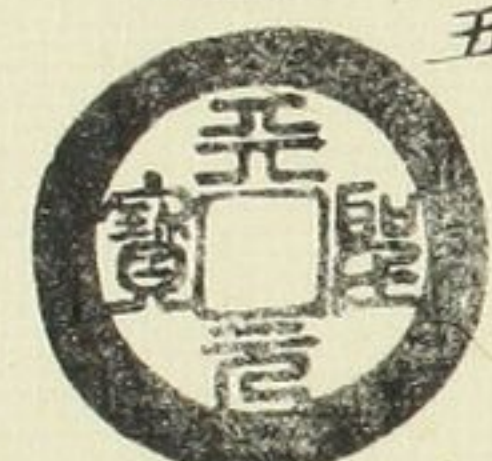
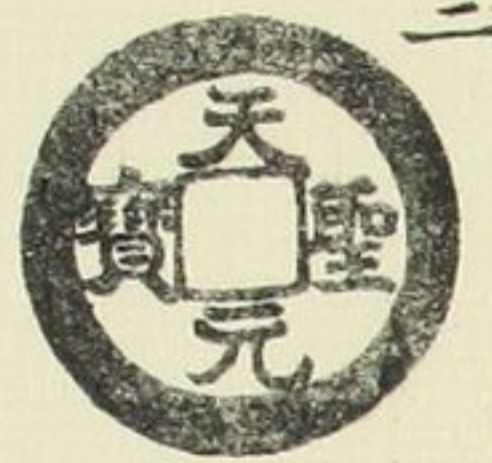


寬字



天聖元宝

織字



縮字



長孔



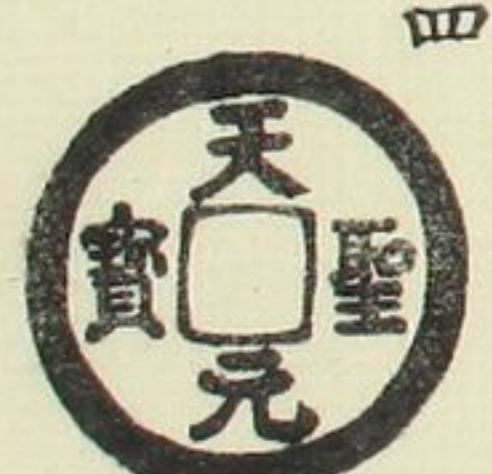
美制



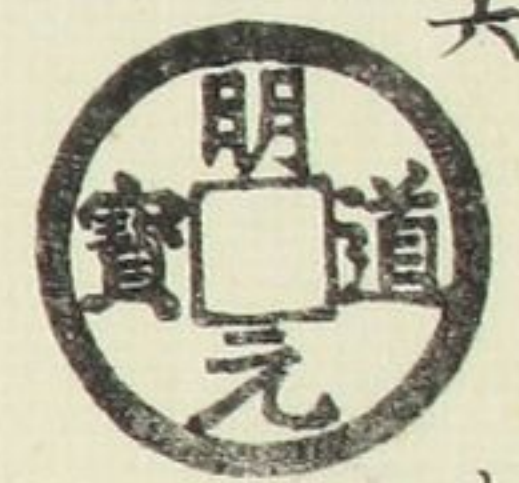
長冠



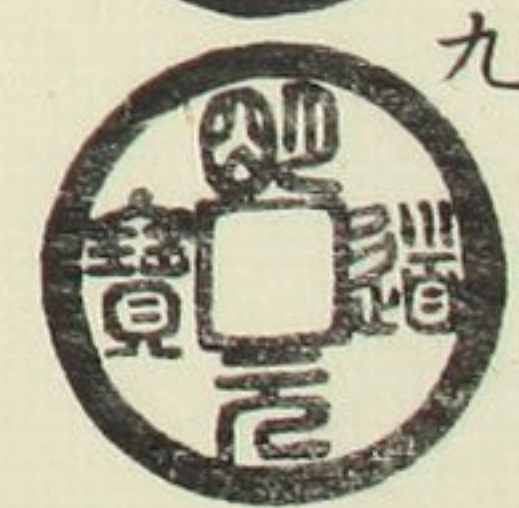
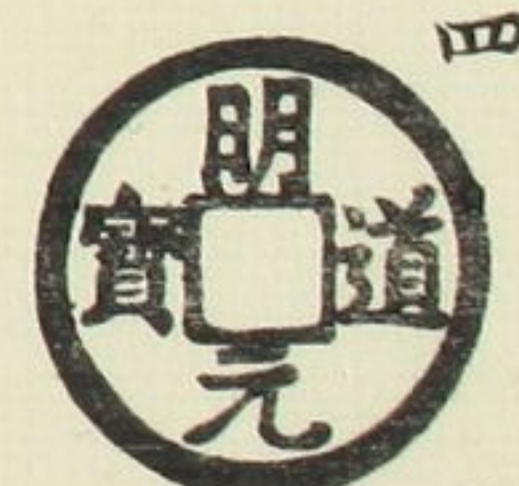
狹字



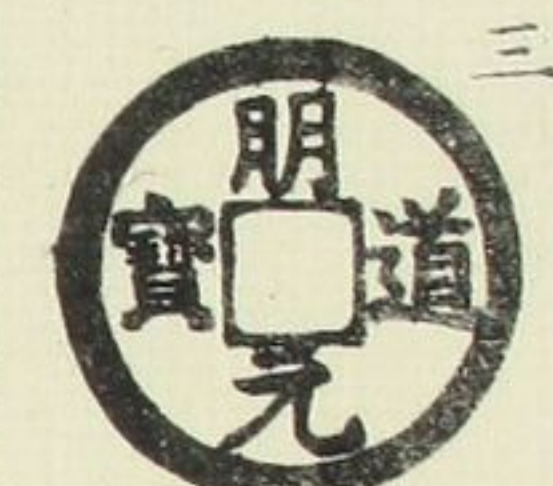
明道元宝 大樣 六



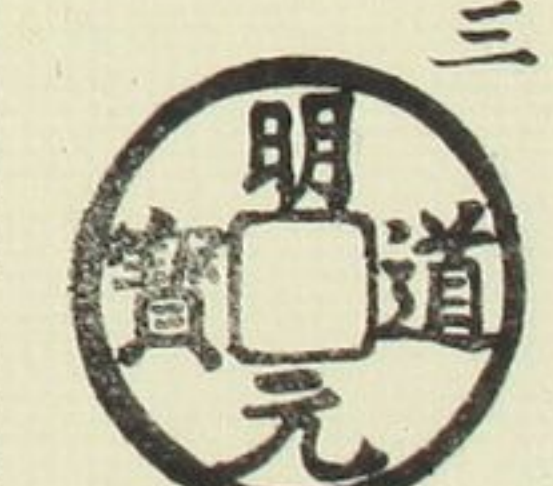
大斜字 四



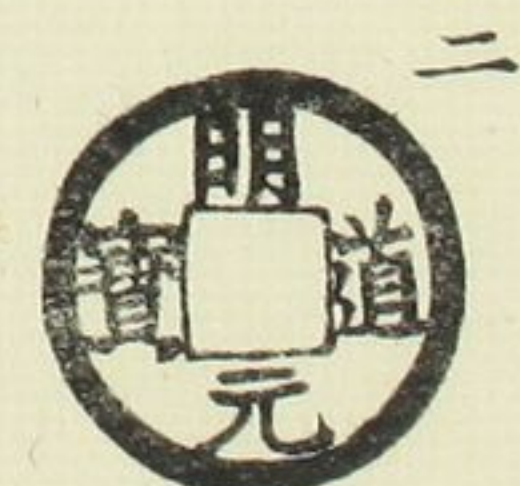
昂直寶



大寶 三

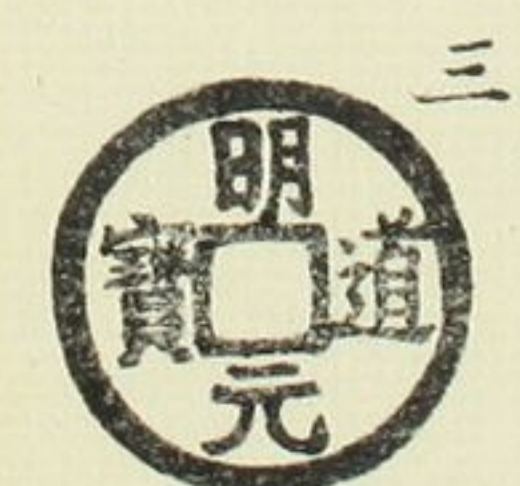


肥郭



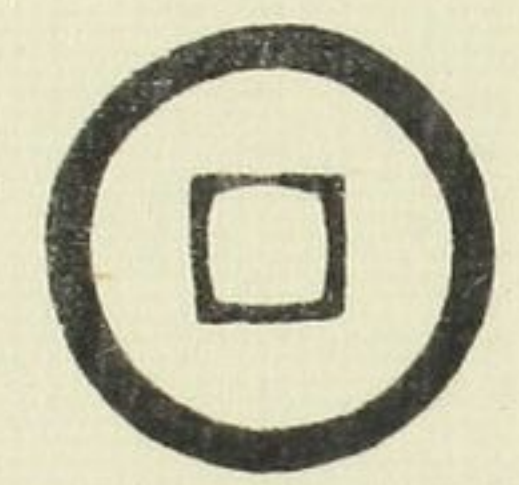
廣穿 二

道勁

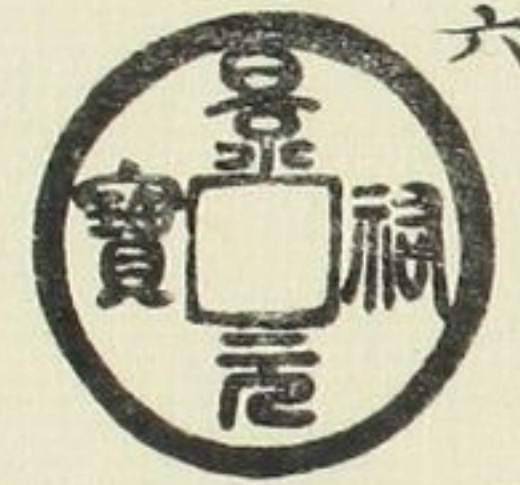


同字上 三

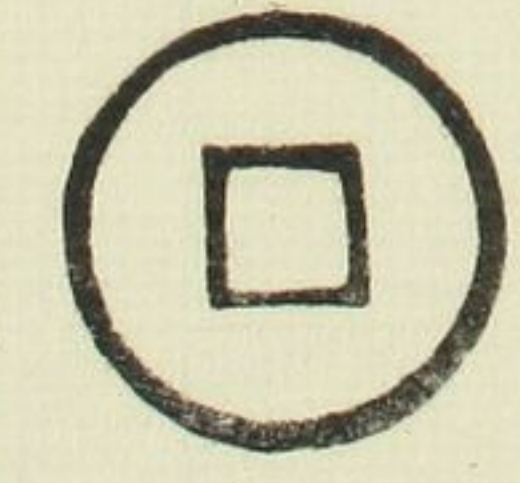
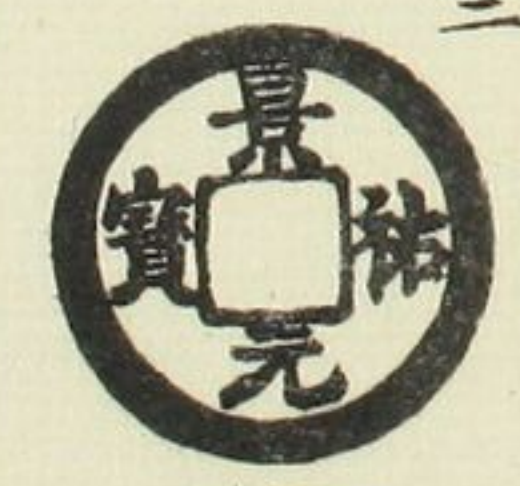
背細緣



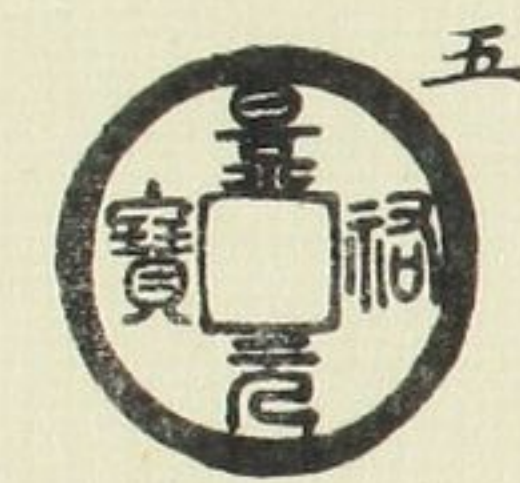
景祐元寶 離室



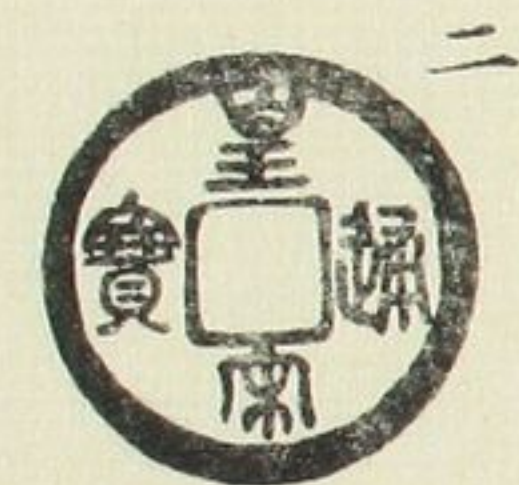
背細緣 三



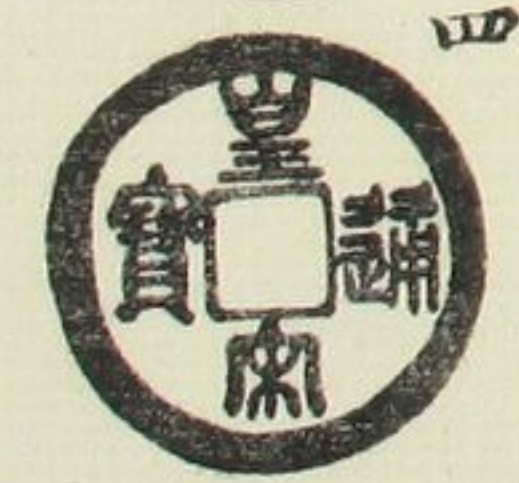
瘦字



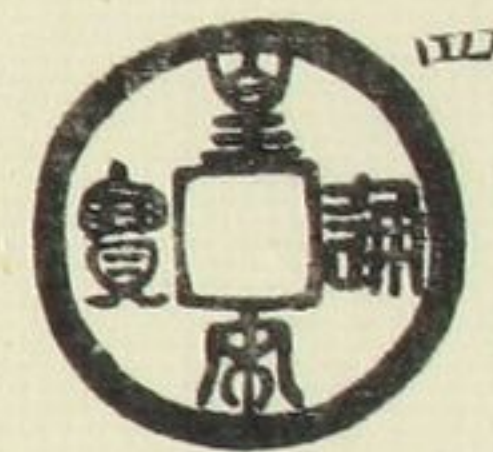
皇宋通寶 細緣 瘦字



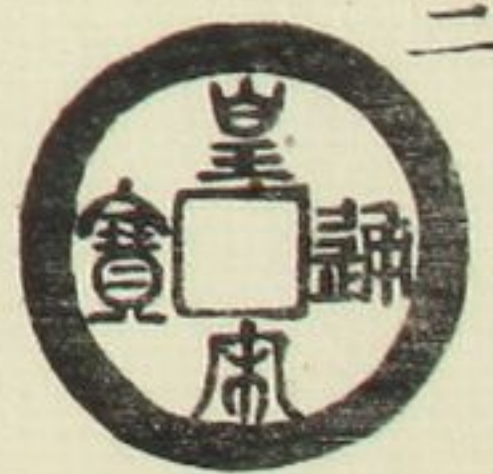
陰郭 狹穿 八



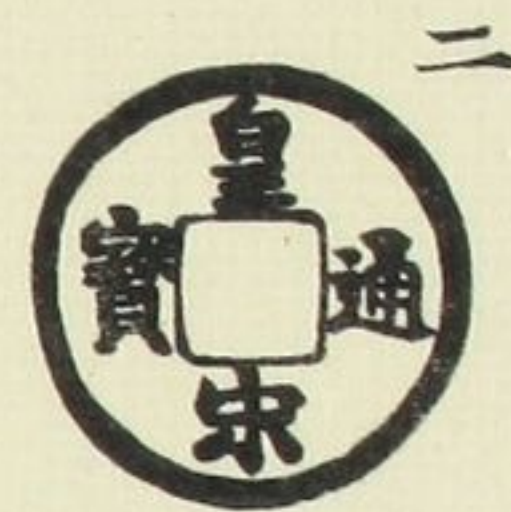
正郭



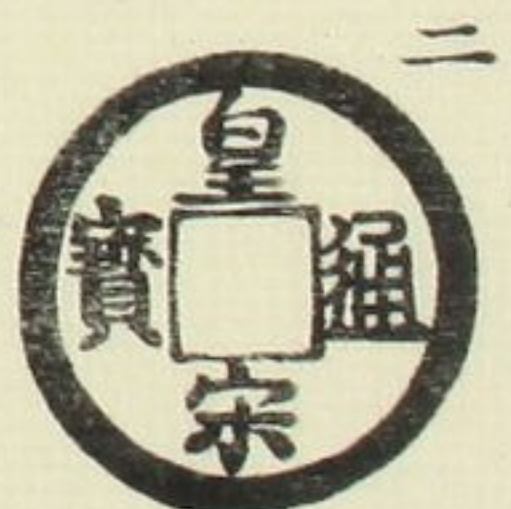
同上
小字



廣通



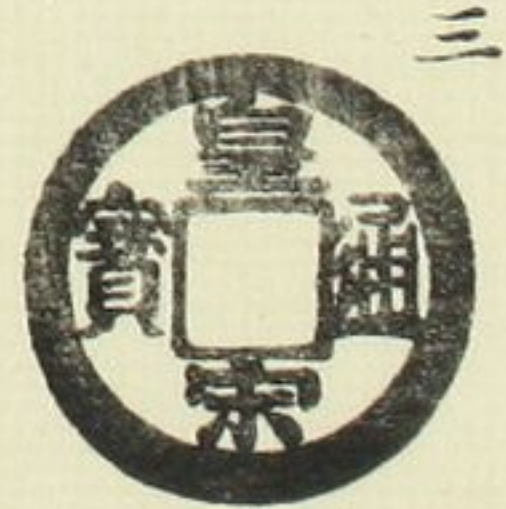
隸通



長通
濶緣



通勁



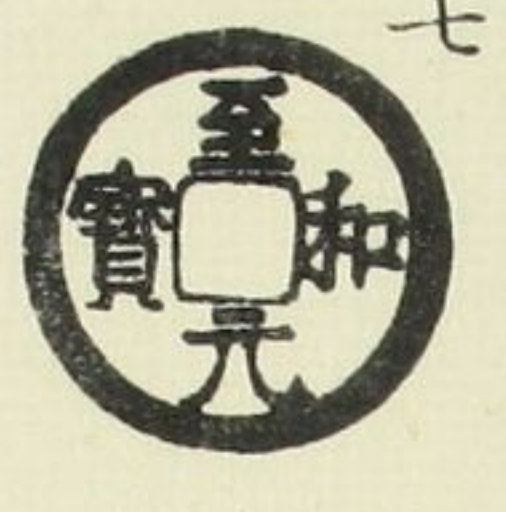
寬通



狹木宋

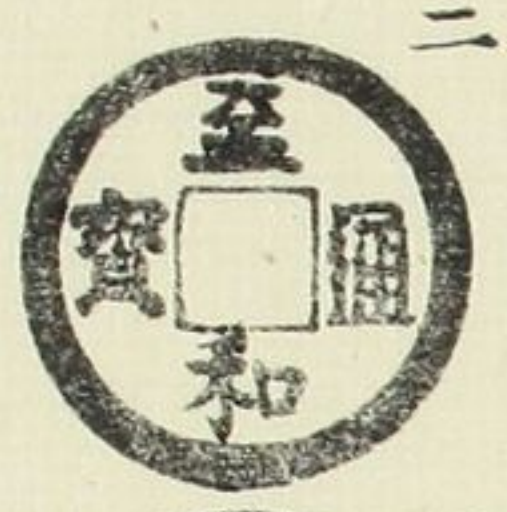


至和元寶



大字

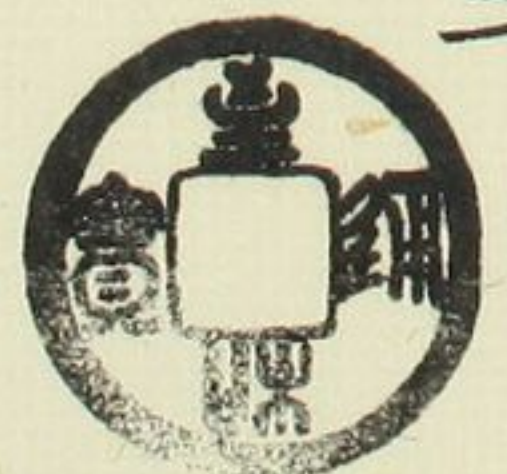
至和通寶



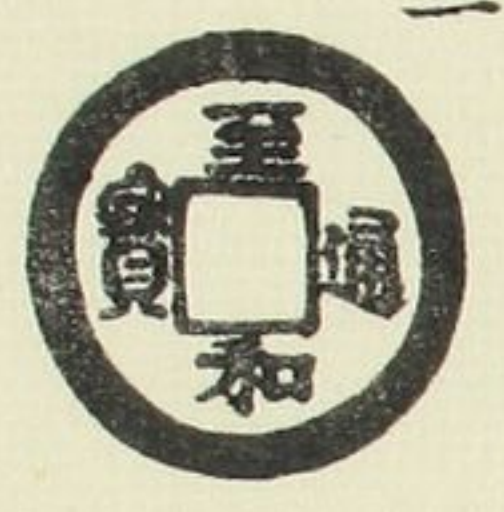
陰起郭



廣穿



接郭

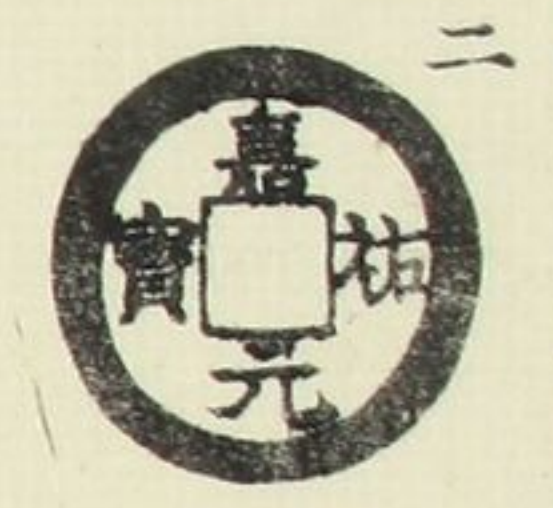


嘉祐元寶

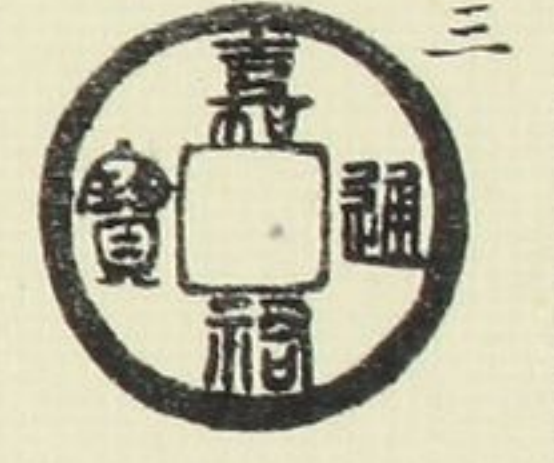
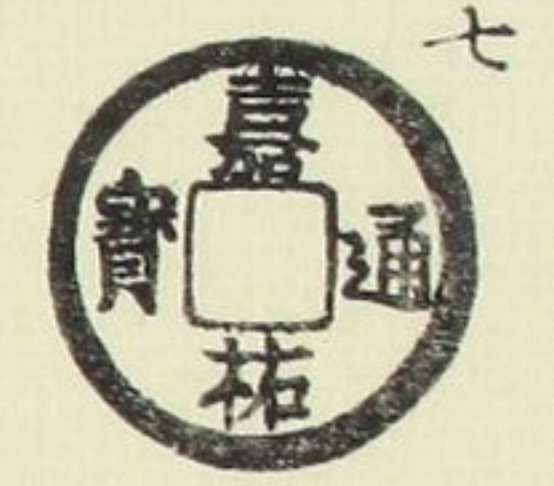


細緣
闊字

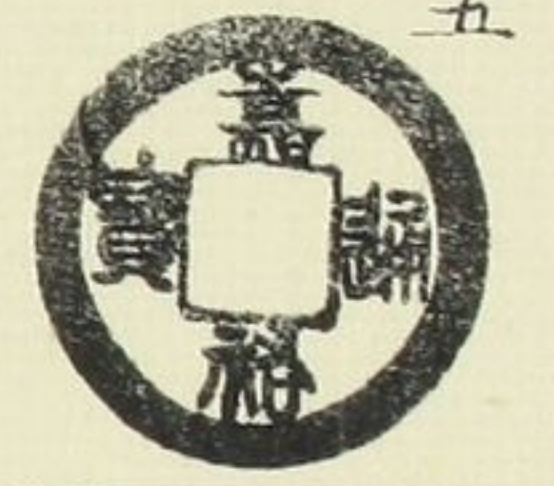
小字



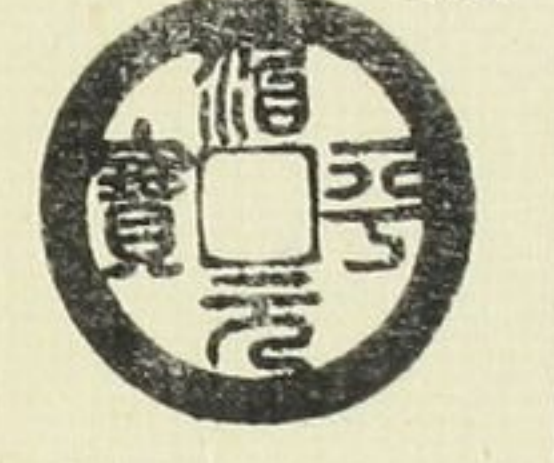
嘉祐通寶
細緣
直寶



長祐



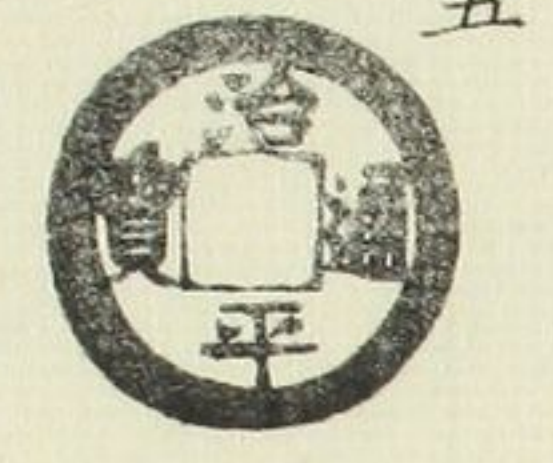
治平元寶
中間緣



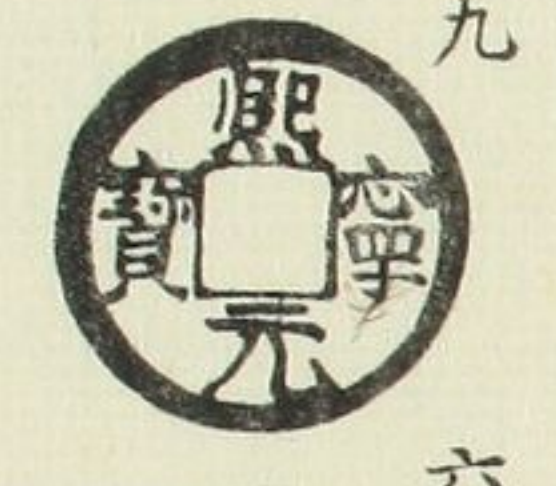
濶緣
大字



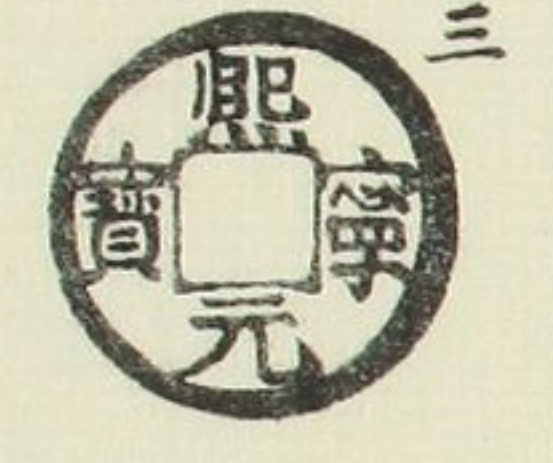
治平通寶
隸通



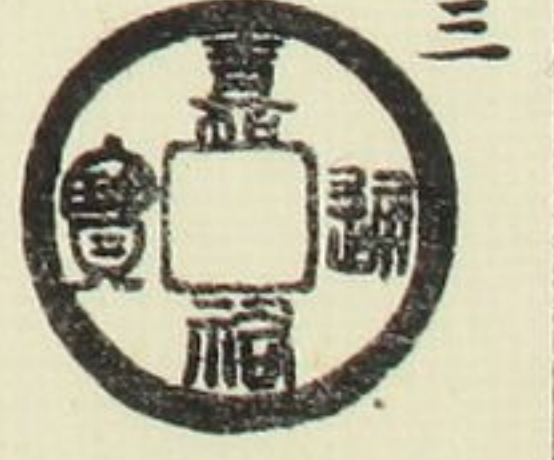
熙寧元寶
濶元



同上
短寶



同上
斜寶



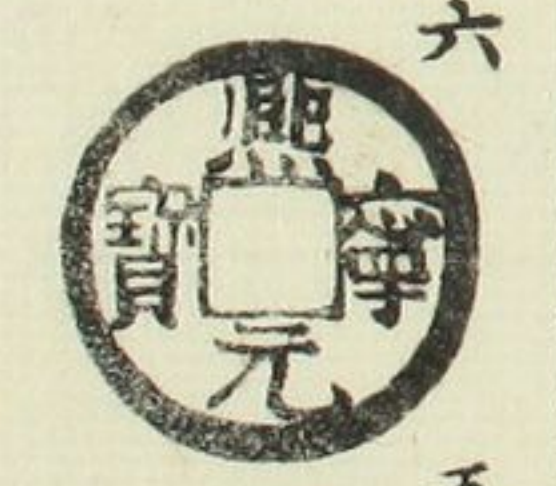
大樣



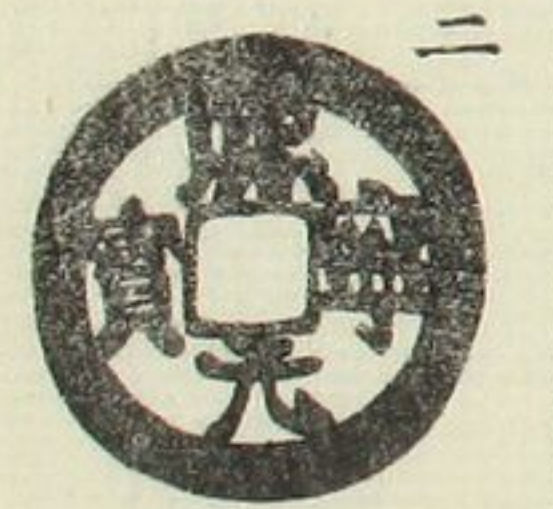
大平
進治



同上
大字



閣字
大樣



御製錢譜

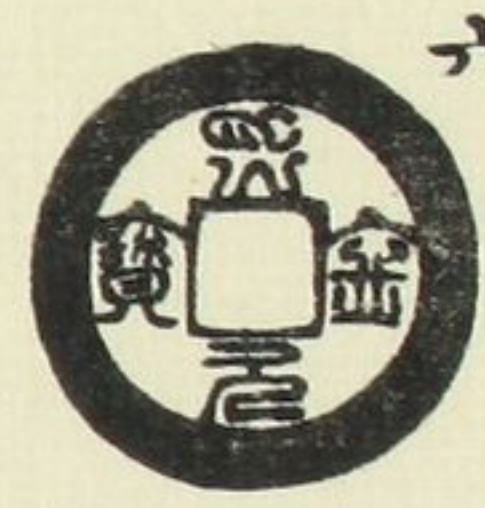
三編

四

狹穿
道勁



同上
潤緣



省書



寶離郭



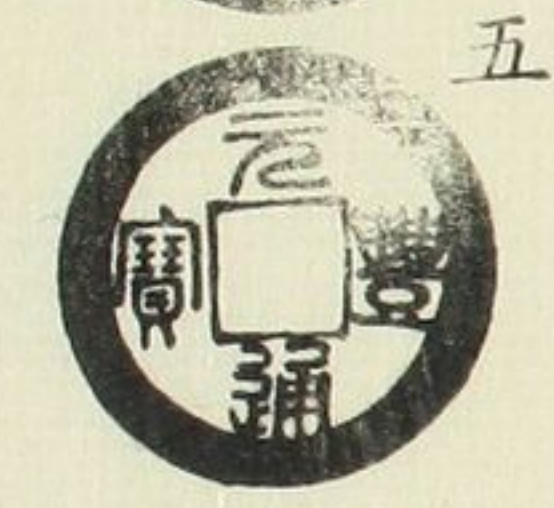
狹穿



元豐通寶
隸書
大字



同上
瘦字



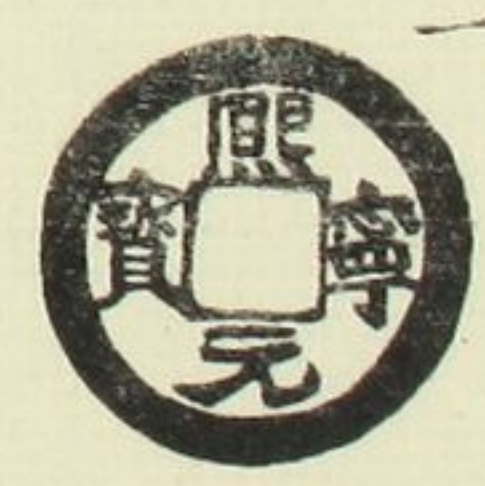
肥元
廣穿



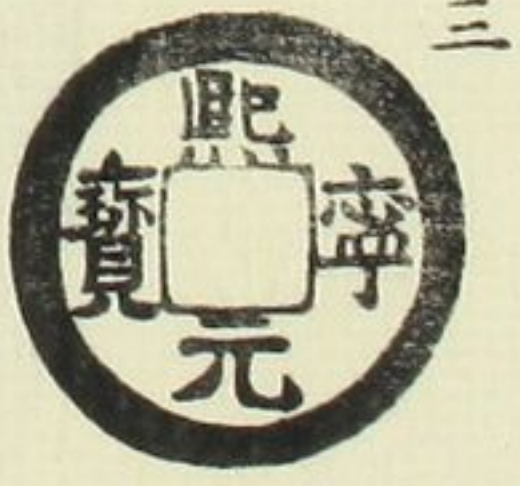
異元



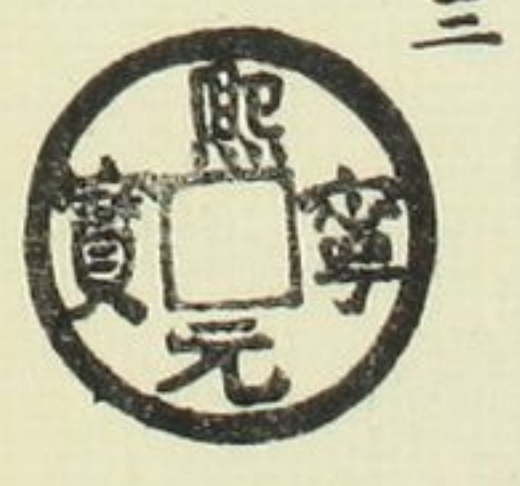
閣緣
縮字



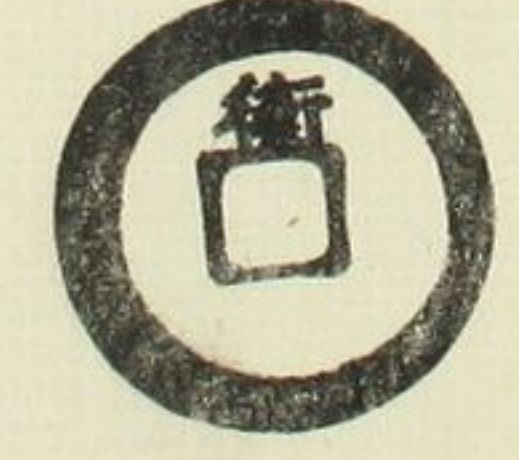
省冠



右元



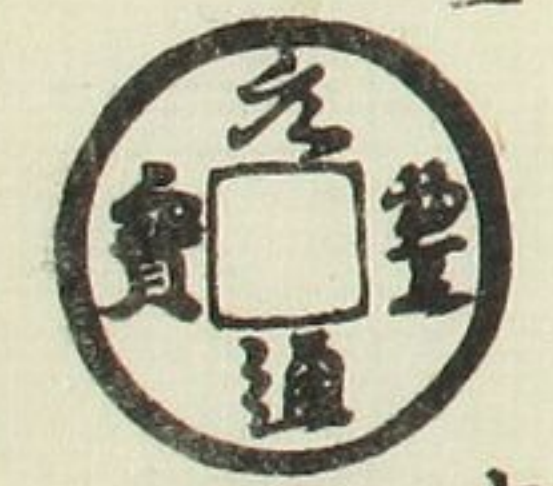
同上
背文



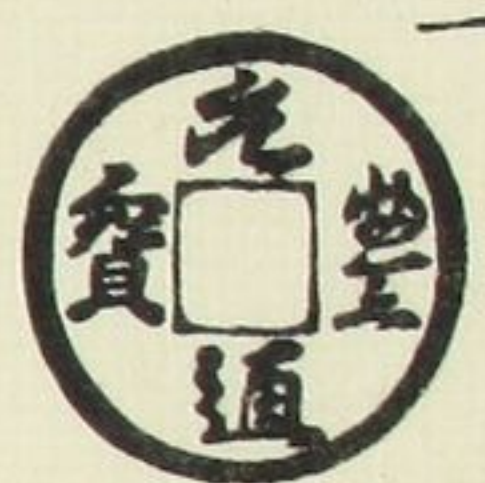
同上
昂元



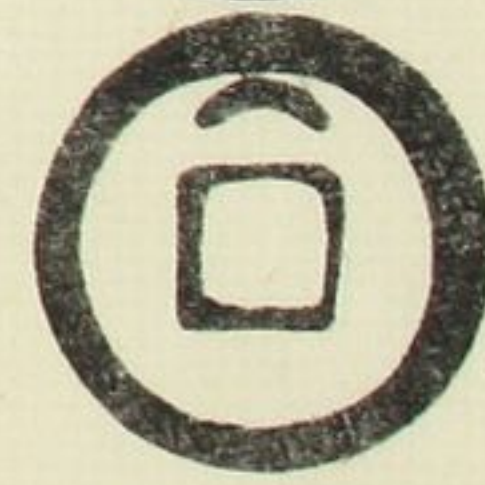
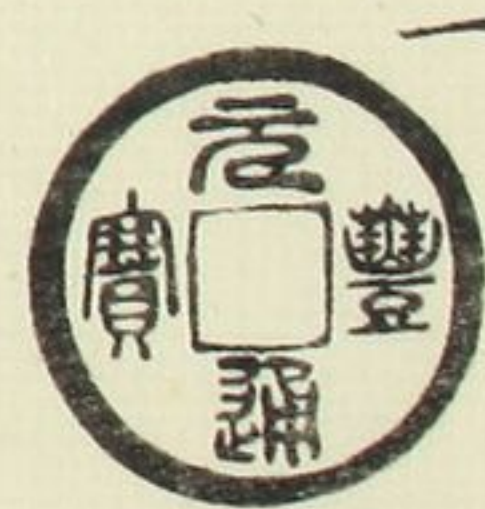
同上
寶寄郭



月文



同上



月文



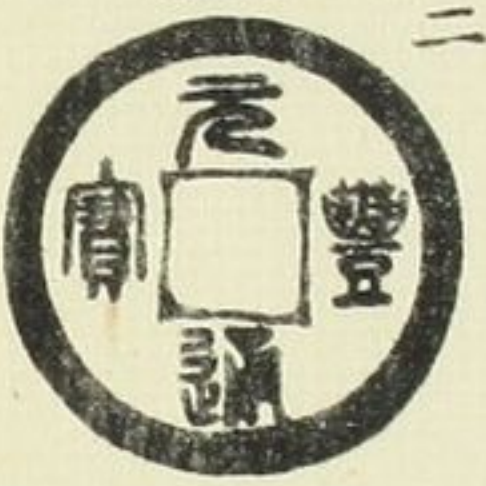
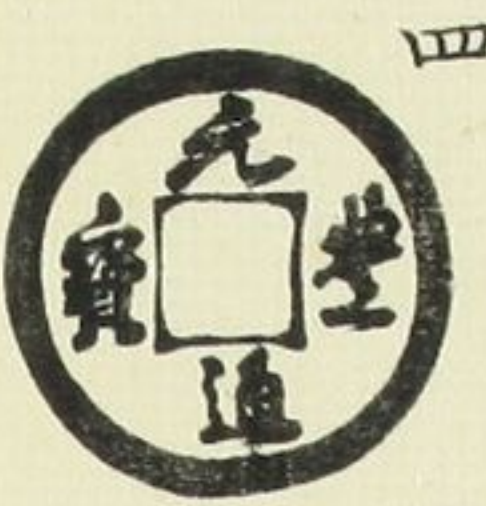
四出大字



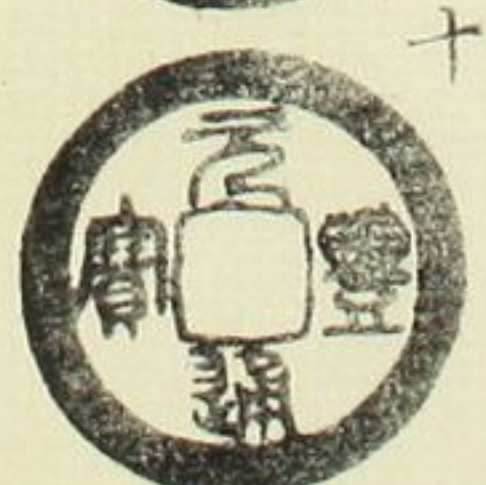
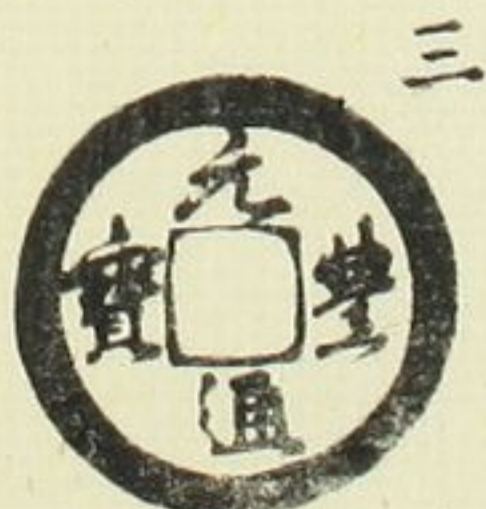
細郭俯元



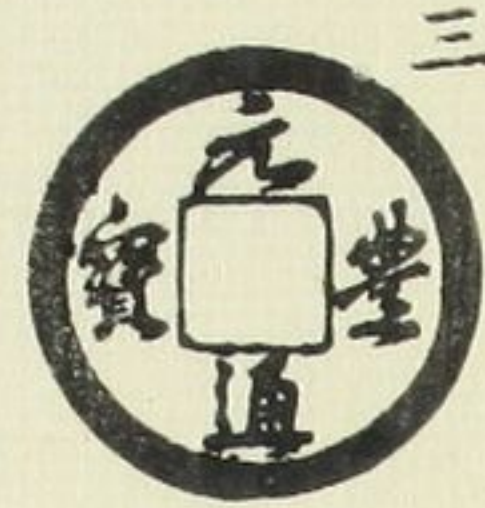
决文



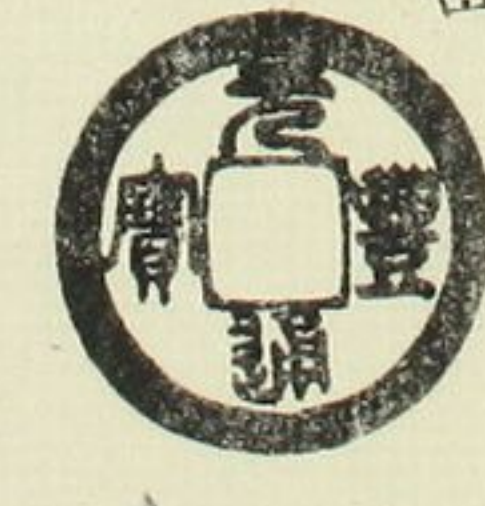
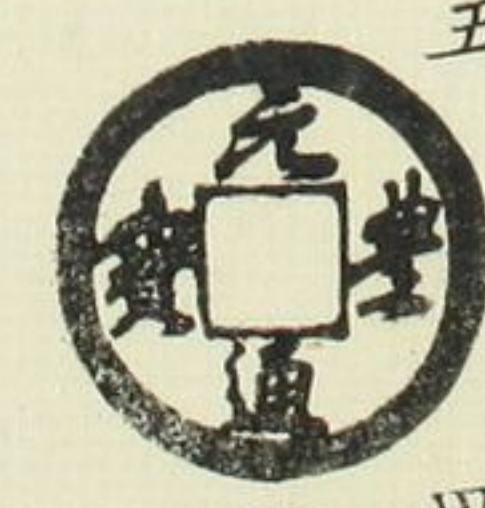
美制通異



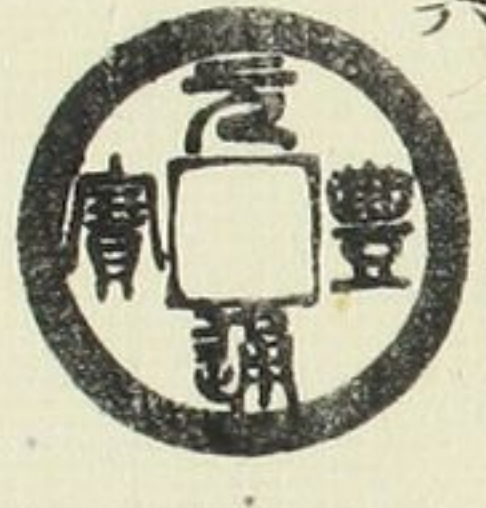
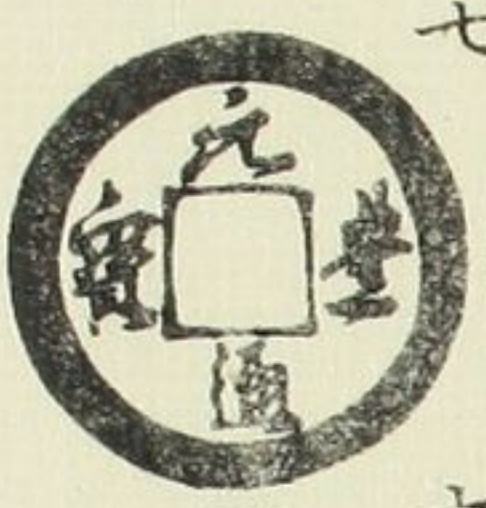
星無背廣穿



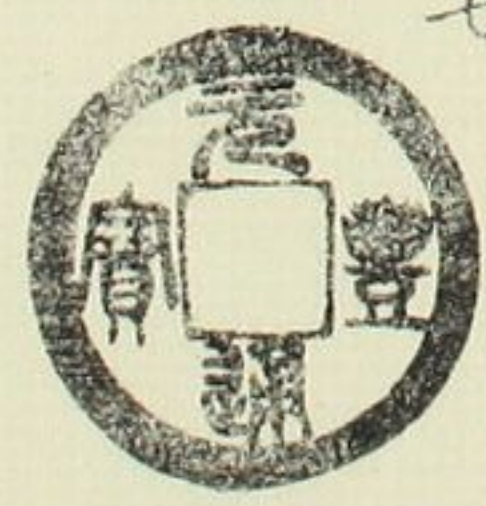
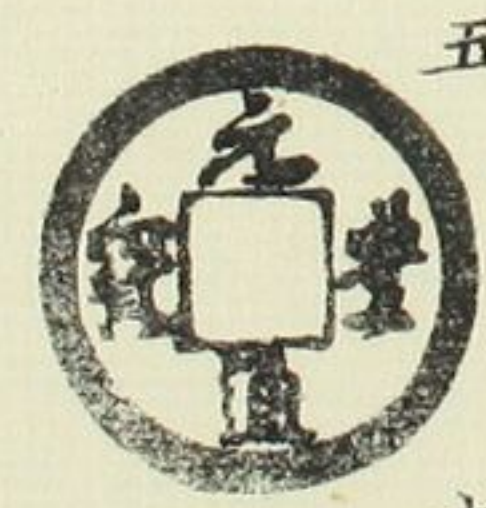
仰元廣穿



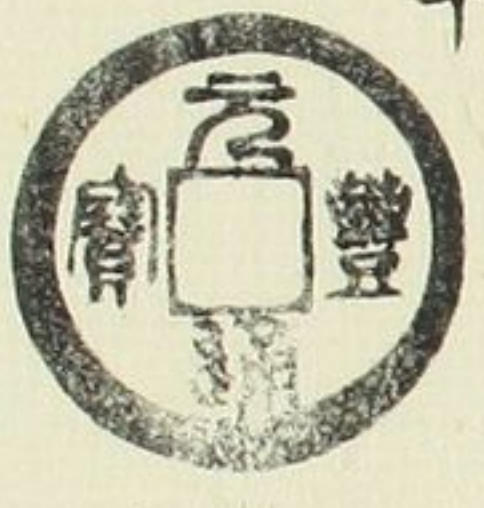
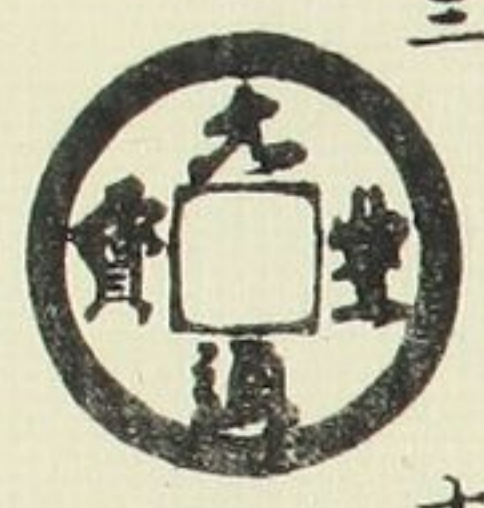
廣穿背反郭



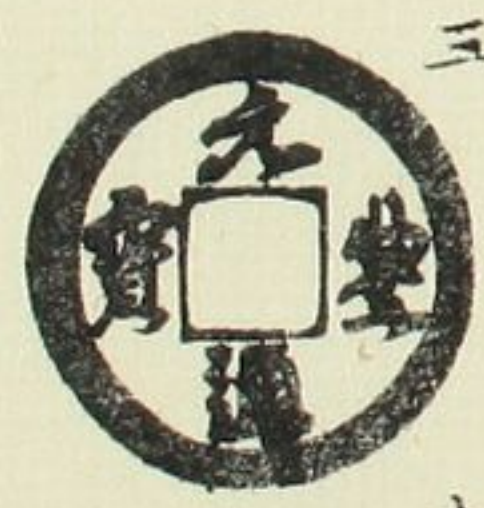
同右上通



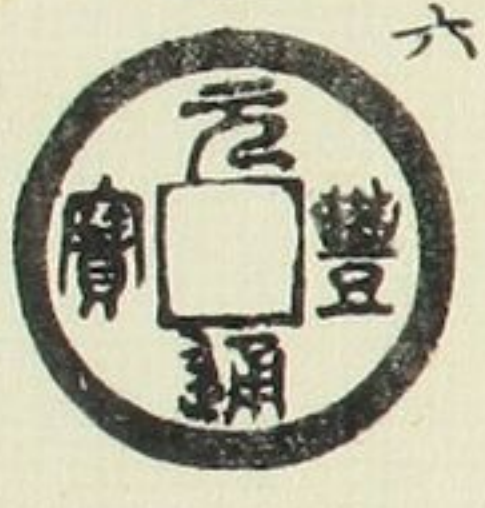
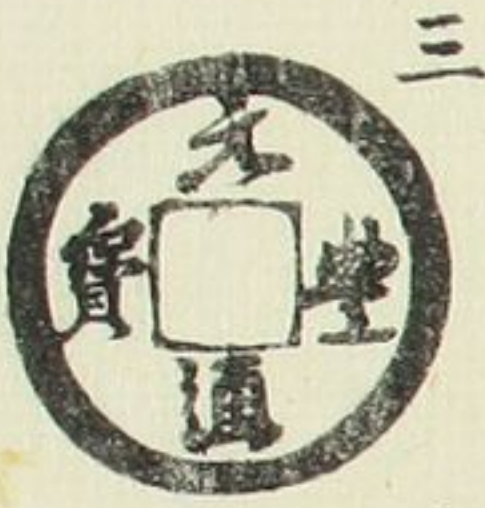
縮字



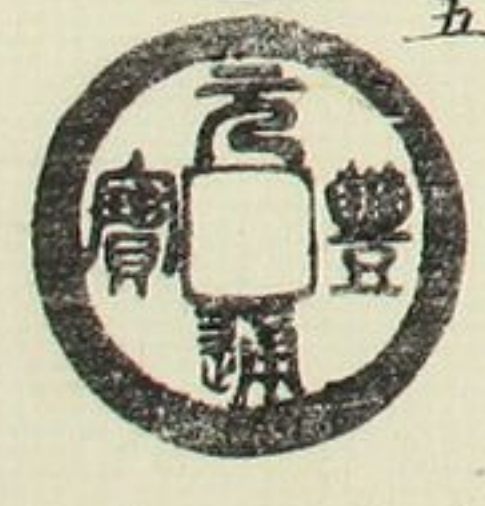
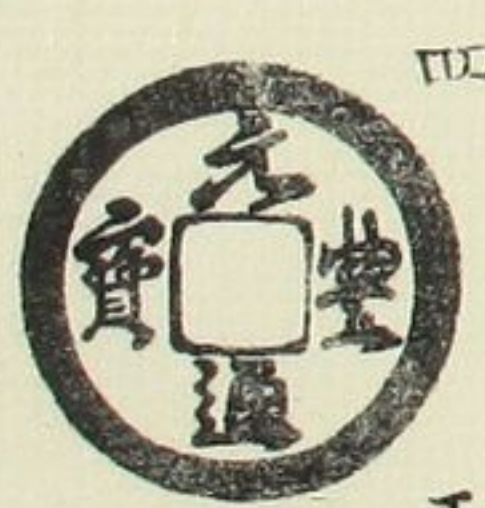
同左上元



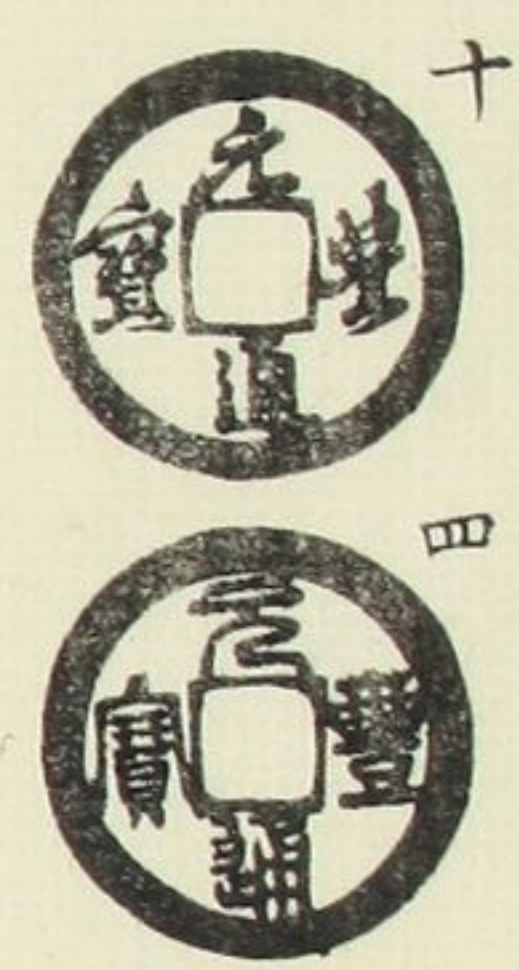
同左上元



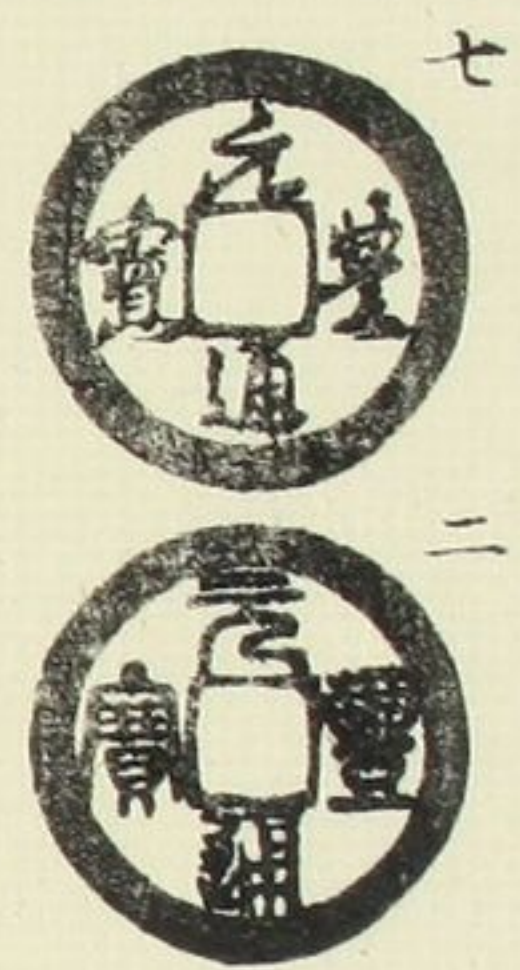
同狭穿上



曲元



大同字上



閣緣通



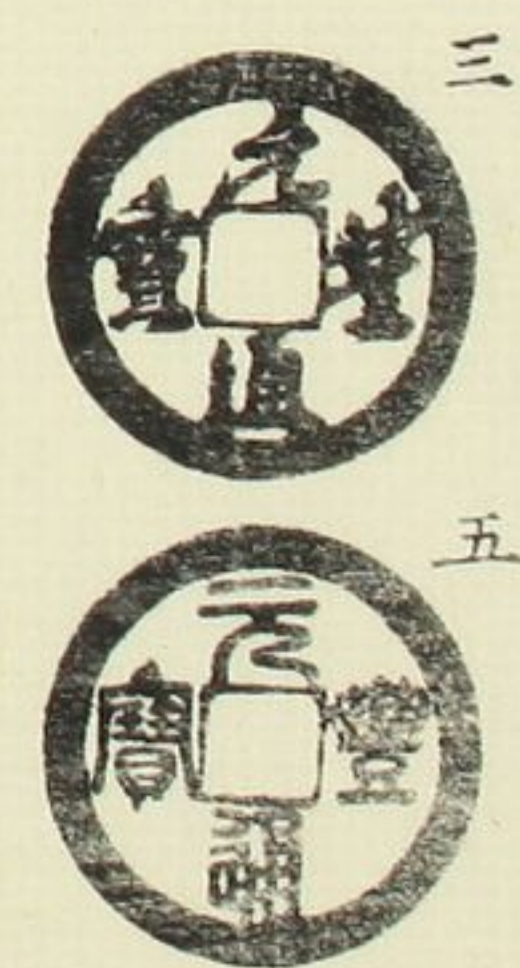
接郭字小



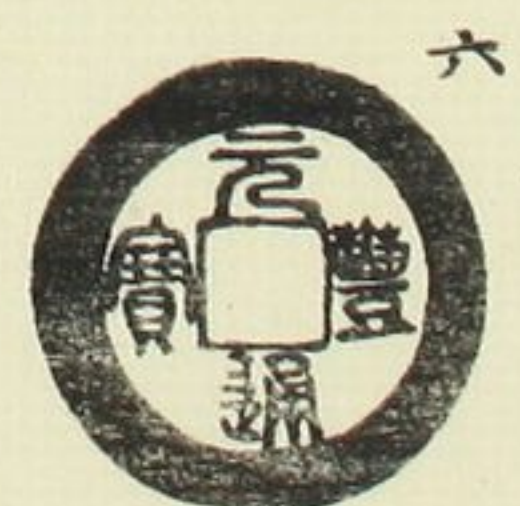
同厚肉上



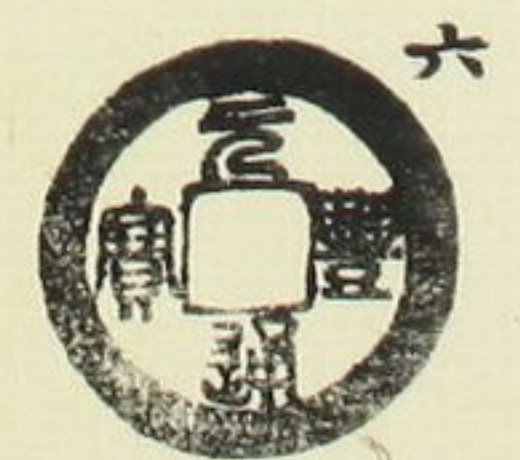
同狹穿上



同退通



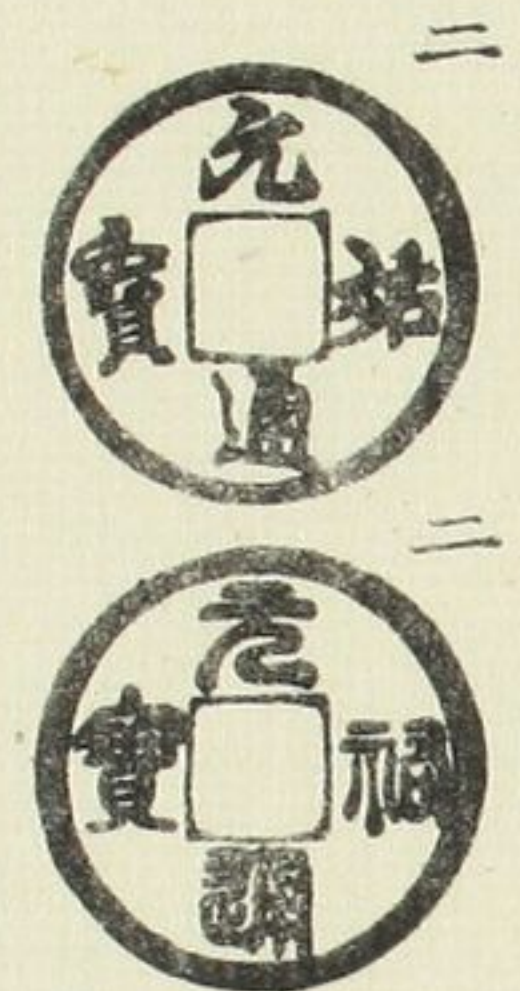
閣緣字小



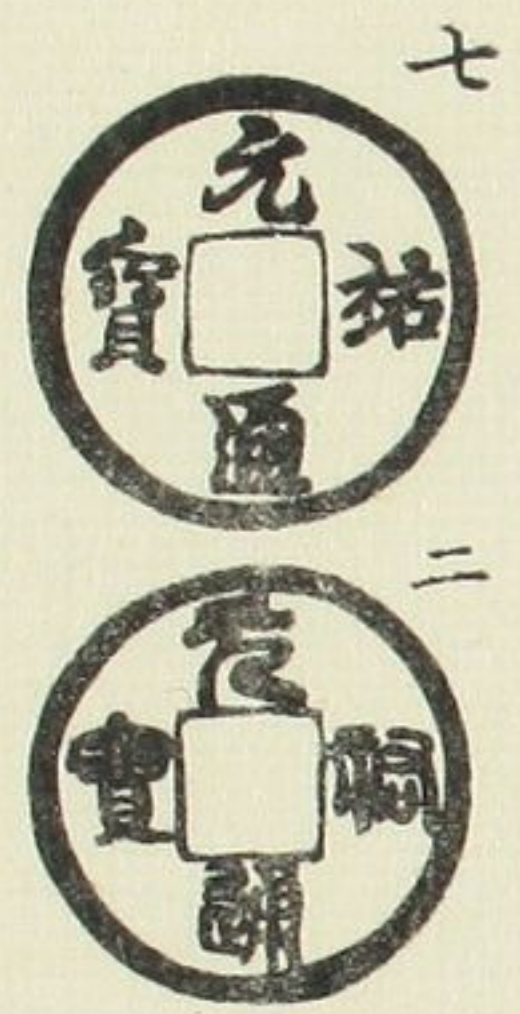
異書



元祐通寶 大樣 降祐



同縮通上



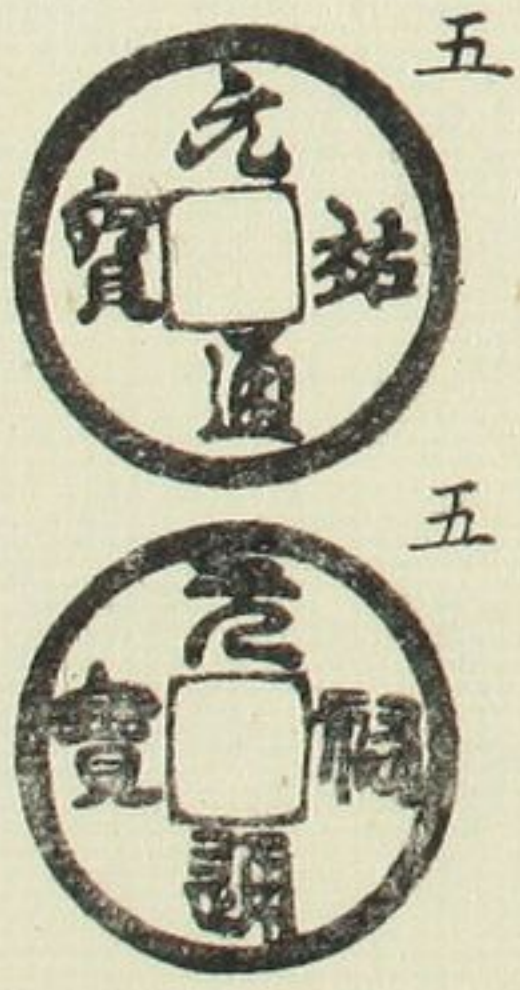
同斜祐上



同左元上



同狹通上



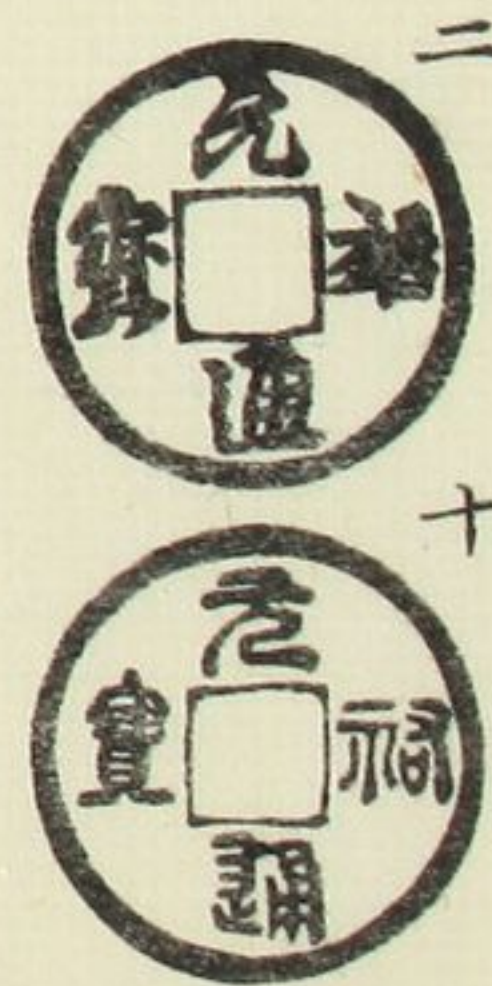
祐郭寄



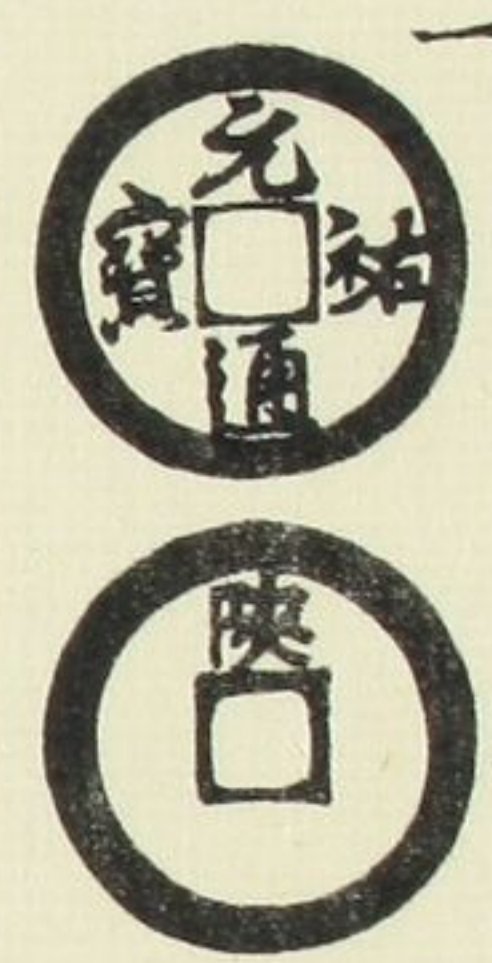
祐
連輪



潤
祐



背
文



同
上



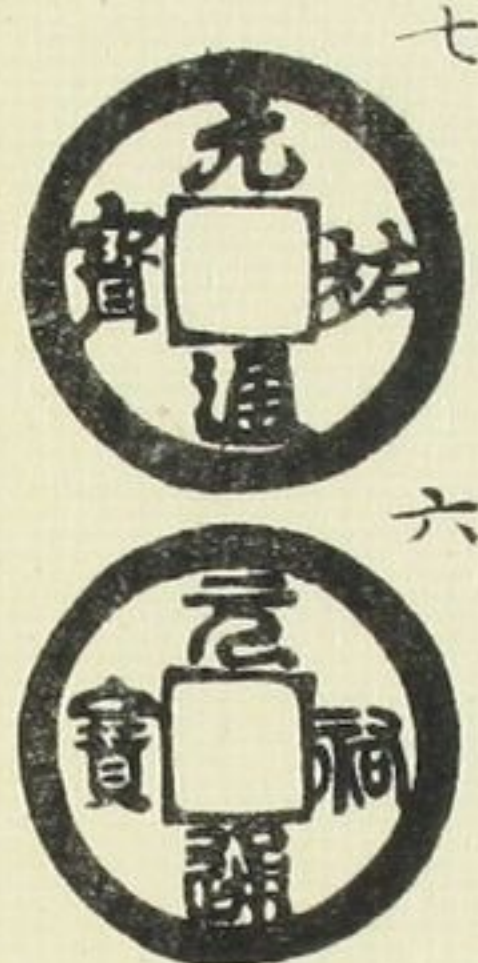
廣
肥郭穿



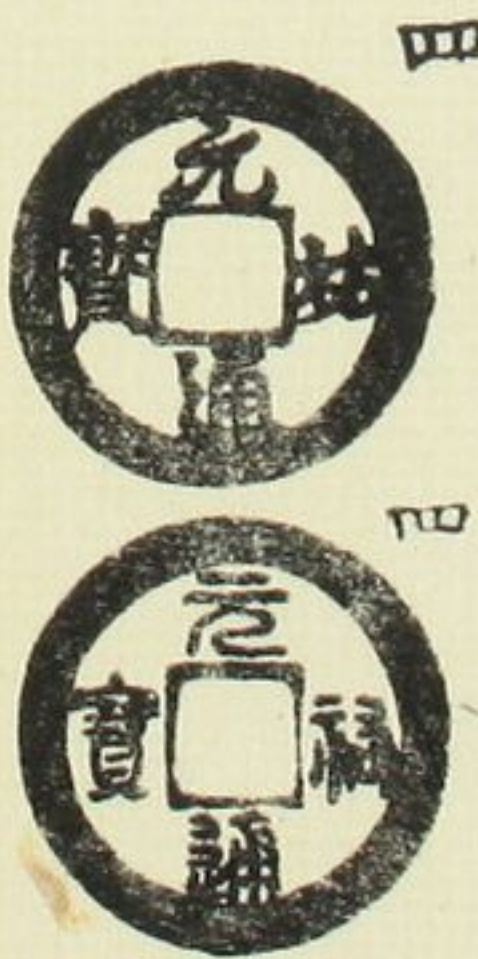
大
元



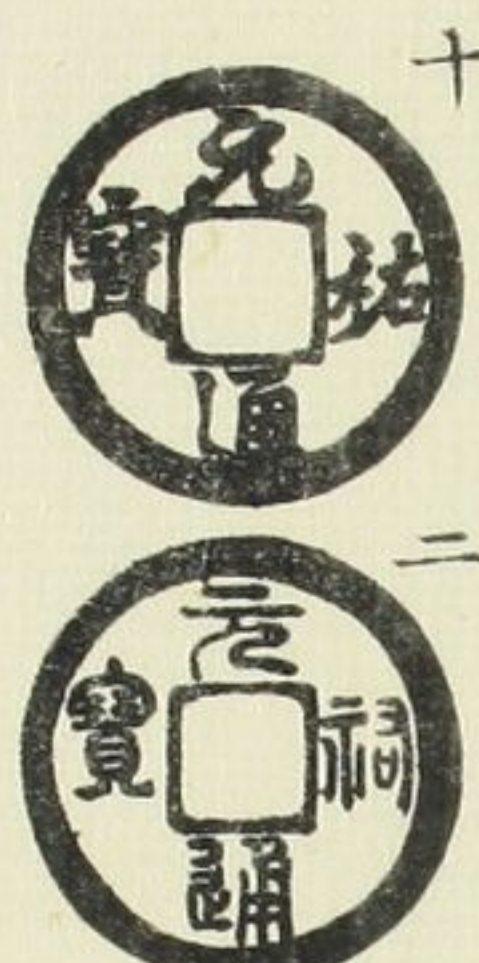
瘦
字



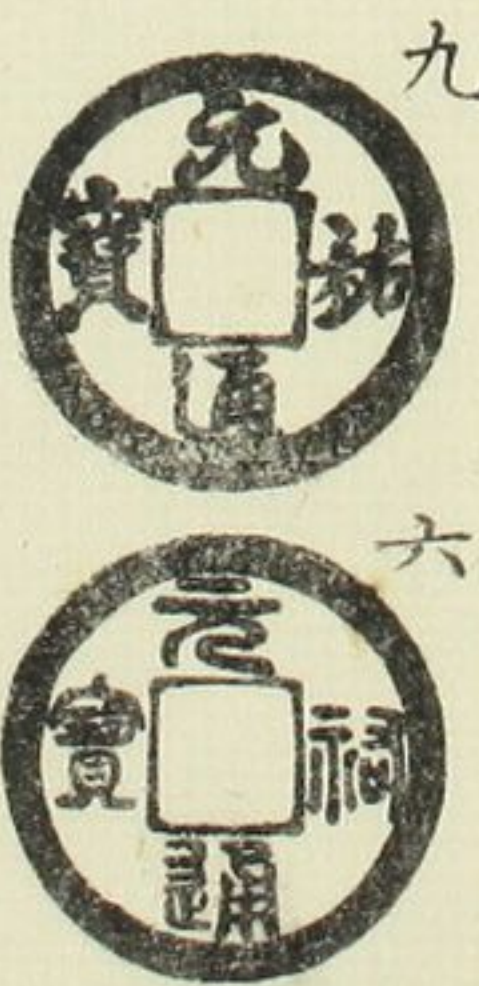
同
小字上



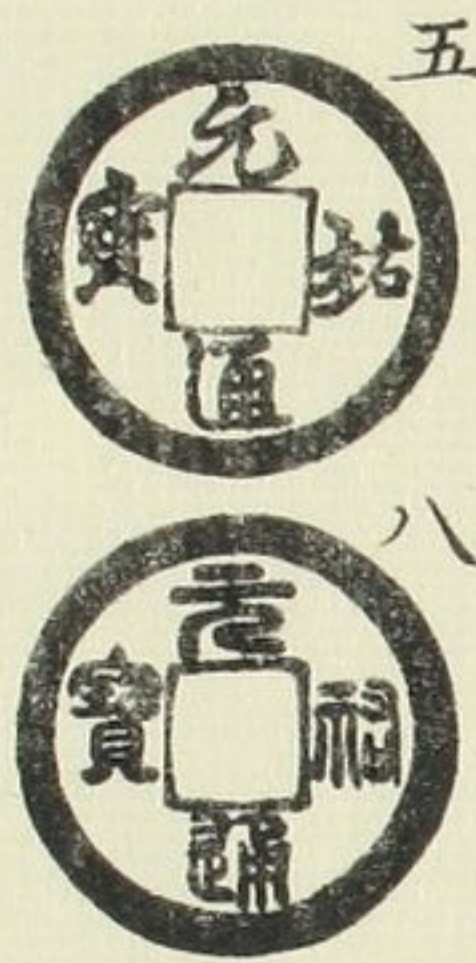
昂
寶



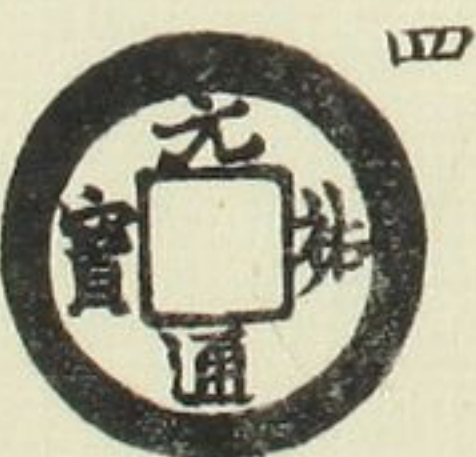
中
昂寶



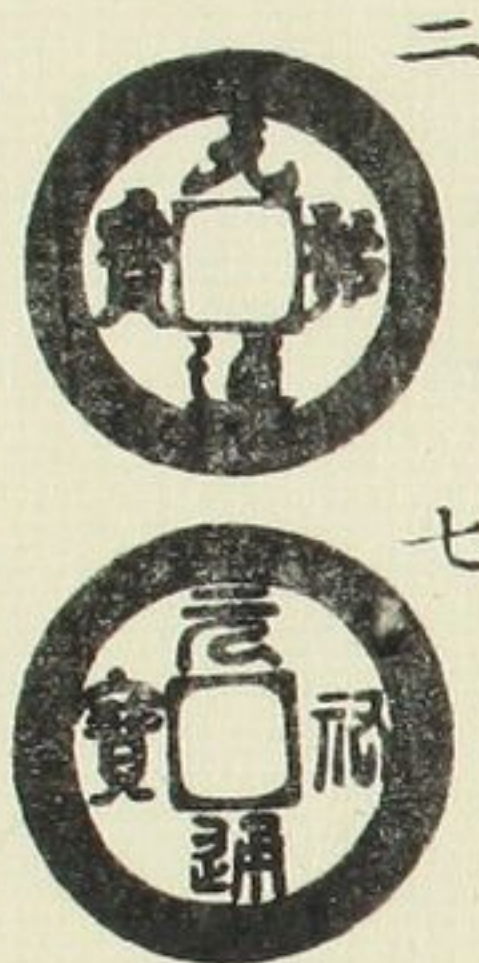
右
昂寶元



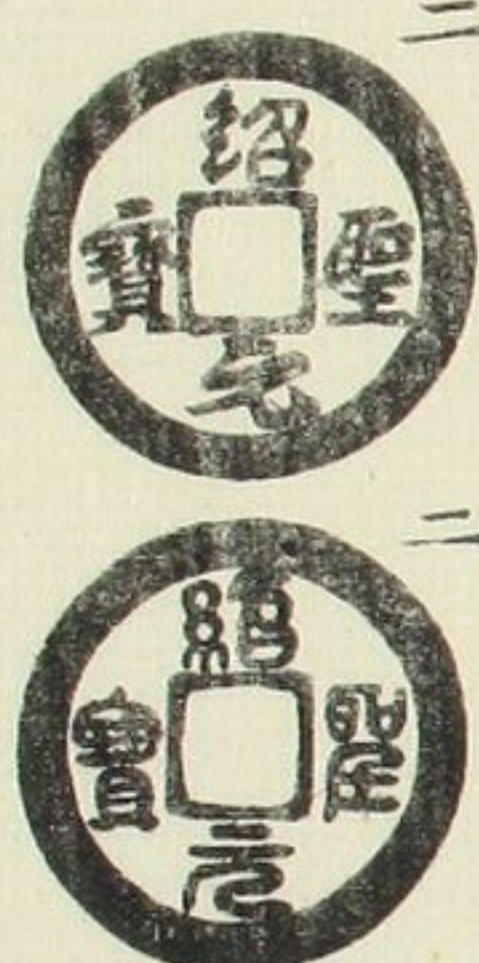
廣
小字穿



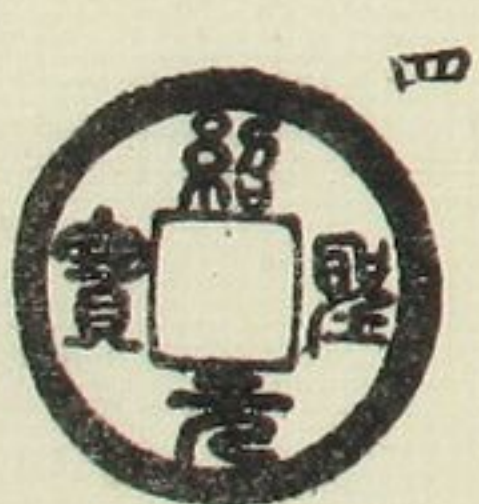
異
書



紹聖元寶
厚內

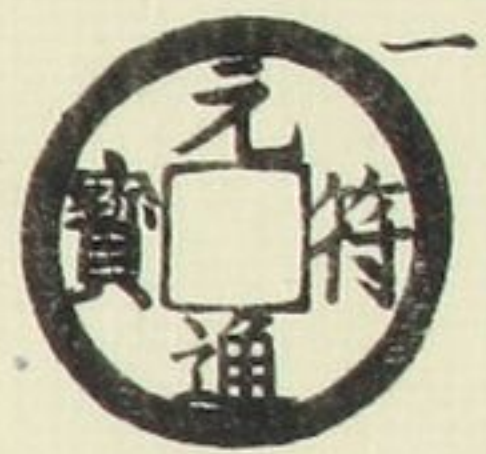


廣
肥元穿

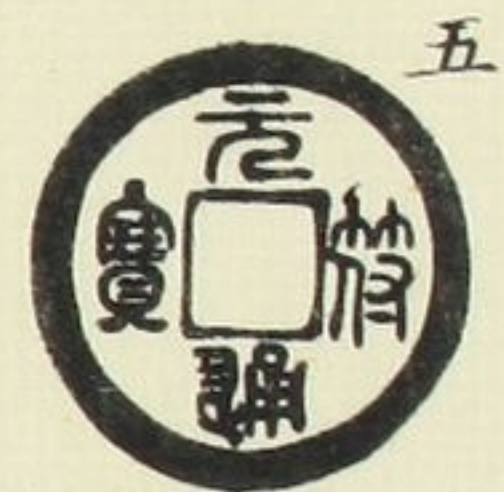


元符通寶

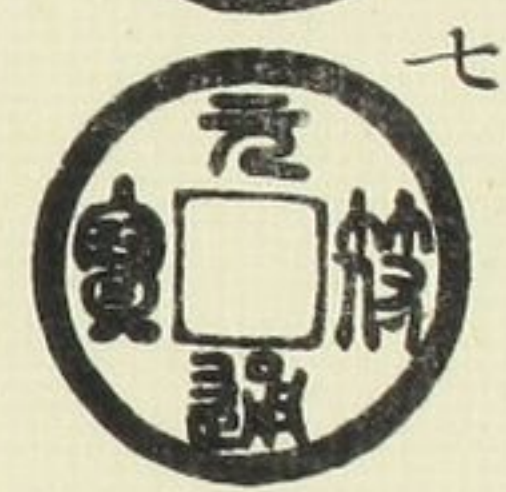
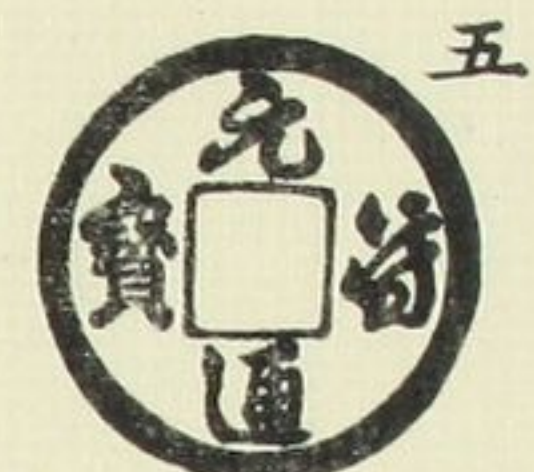
隸書



接郭



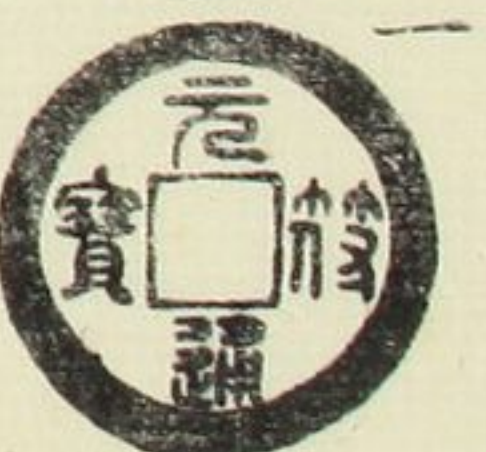
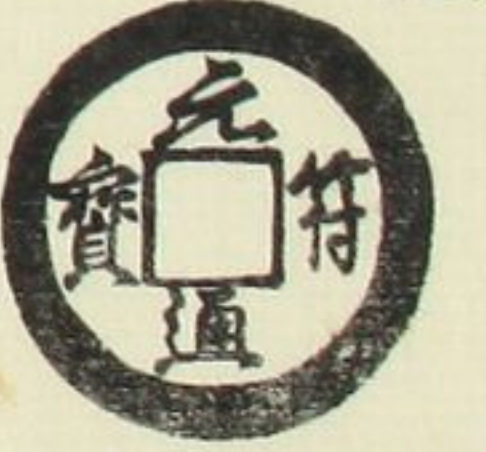
挑大字
仰元



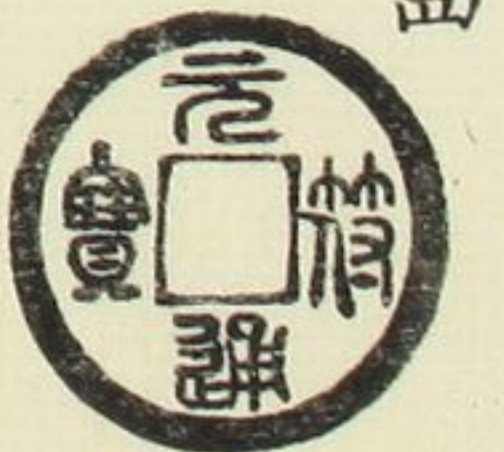
挑小字
右元



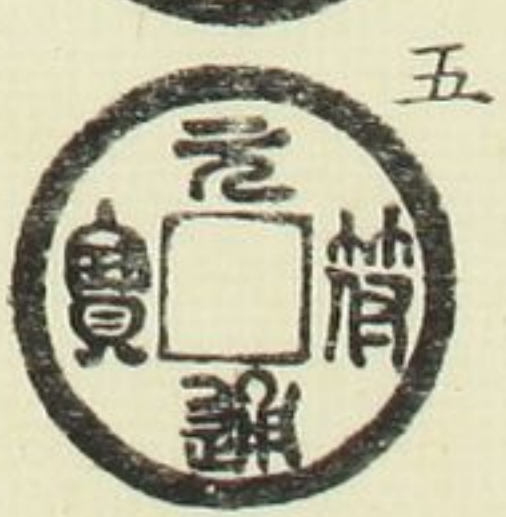
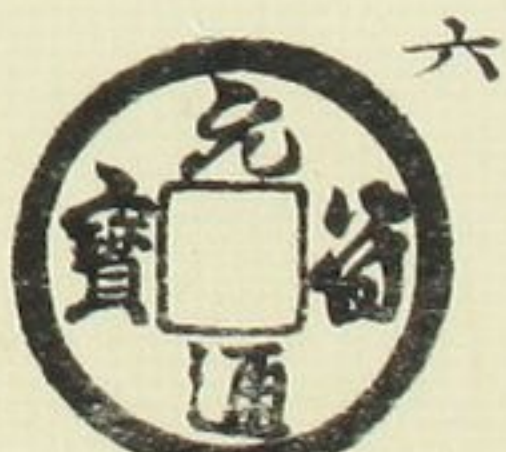
纖字



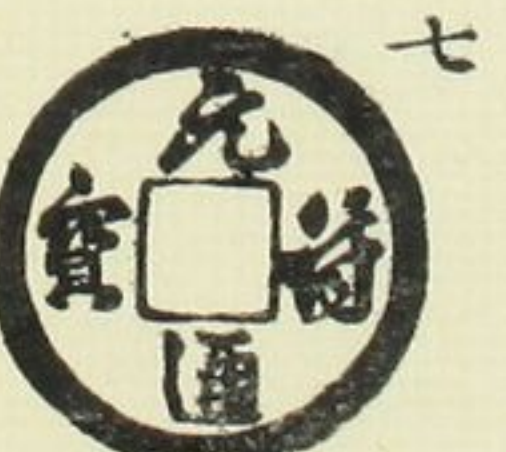
同字上



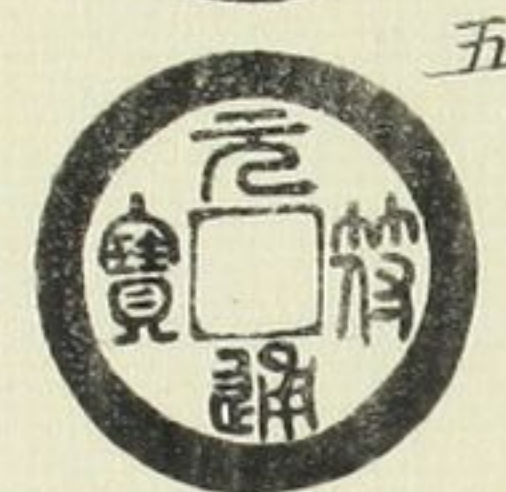
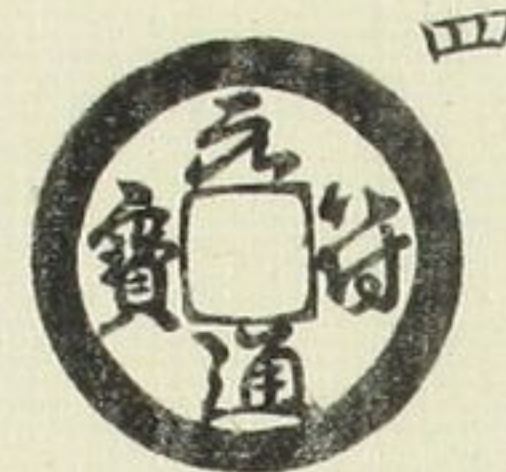
同字上
退通



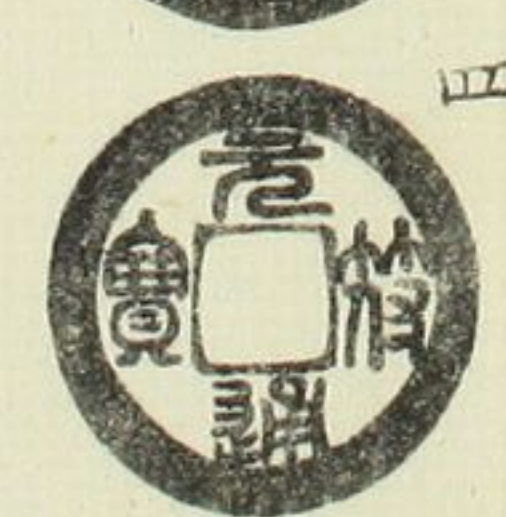
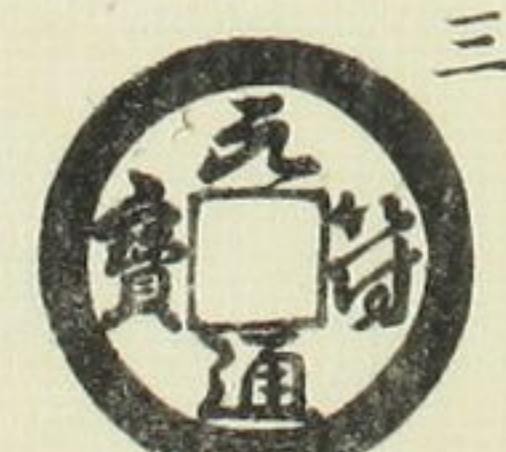
同上
退通



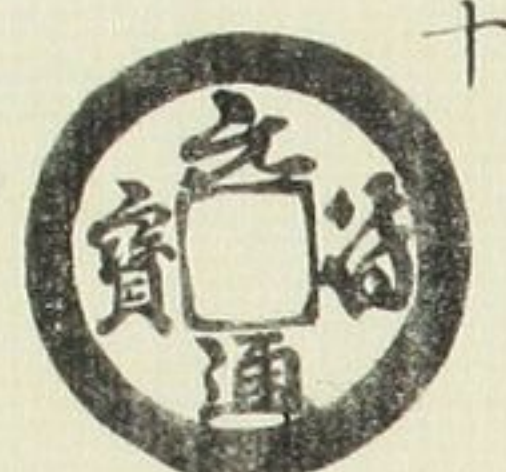
陰郭



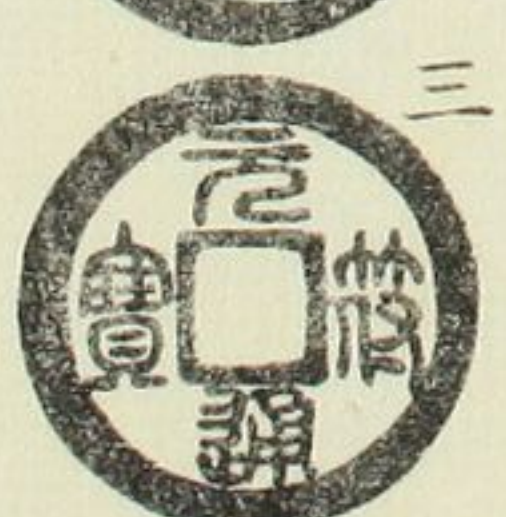
同上
廣穿



尖頭元



平頭元
大字



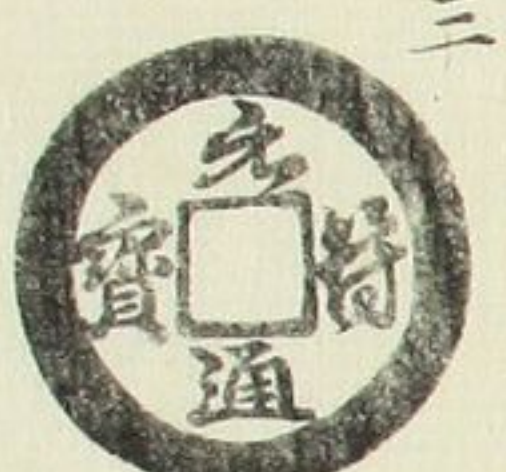
曲元
廣郭



潤緣
狹穿

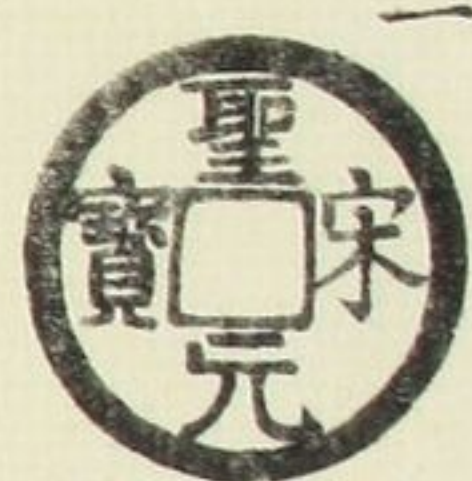


閣緣
小元

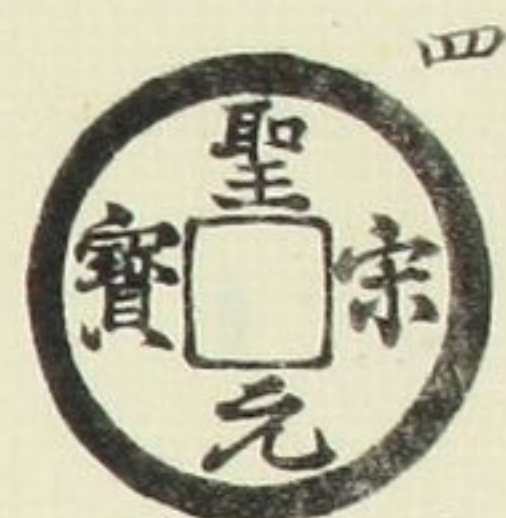


聖宋元宝

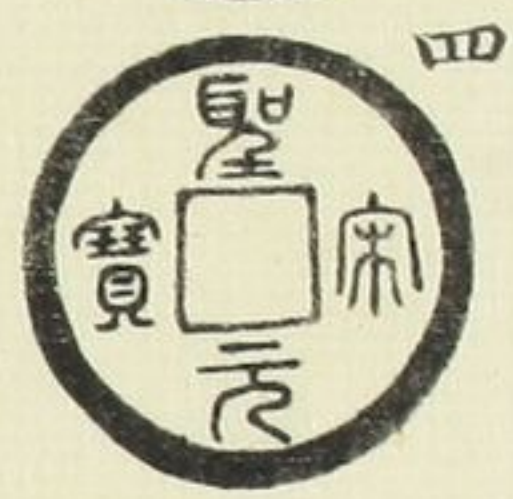
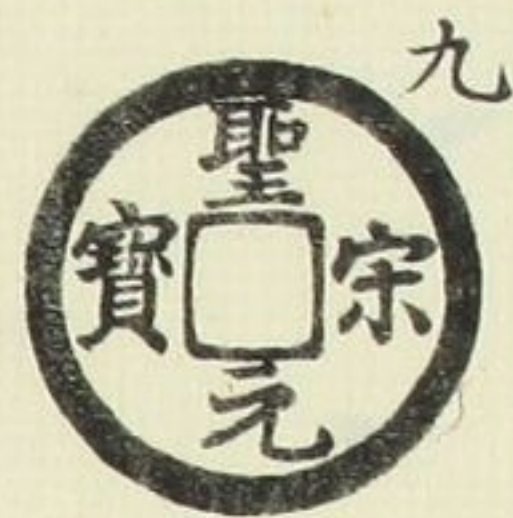
隸書



陰起郭



直宋

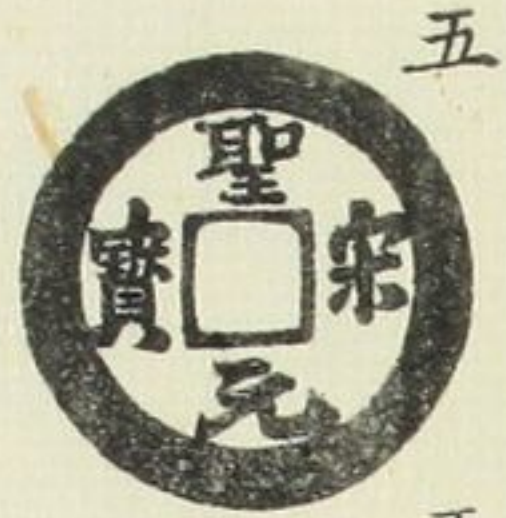


中樣小樣アリ

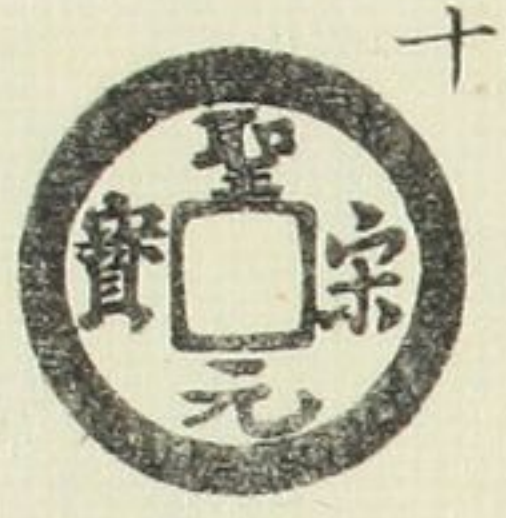
瘦字



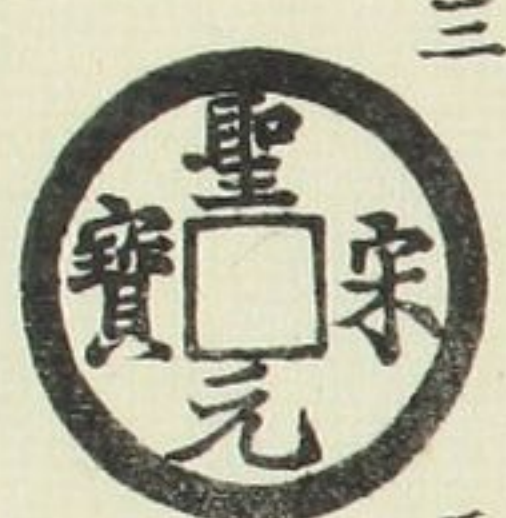
潤緣



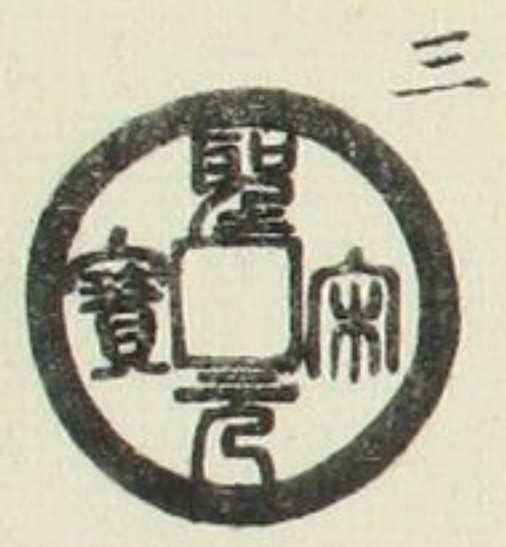
長尾



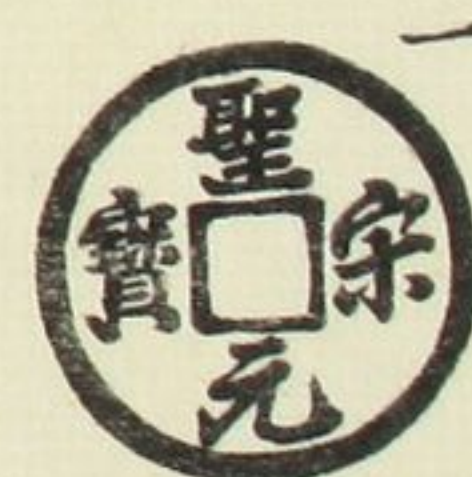
長字



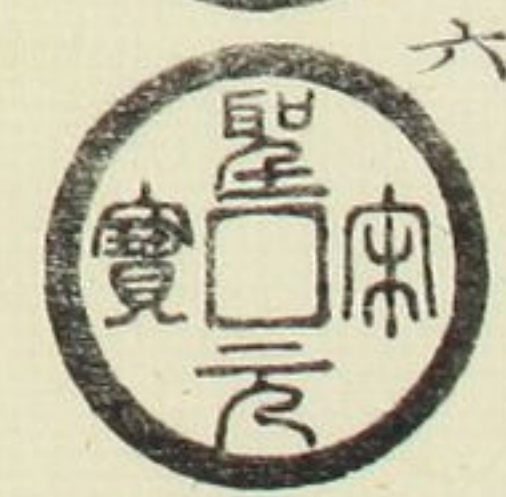
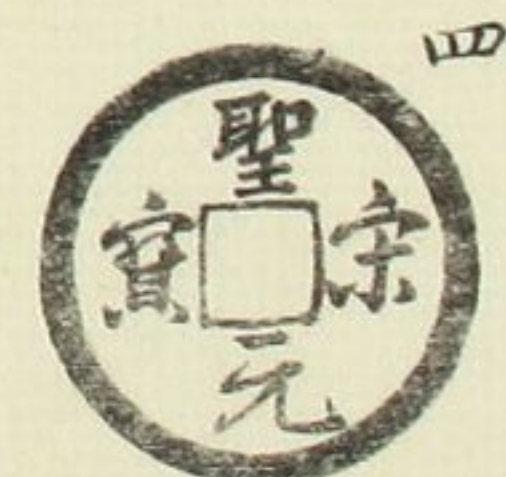
直元



通宝手

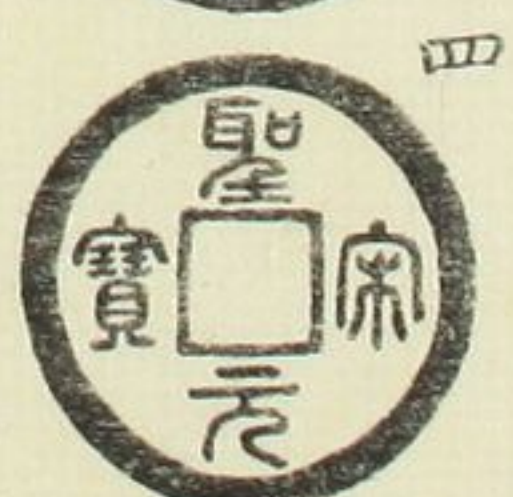
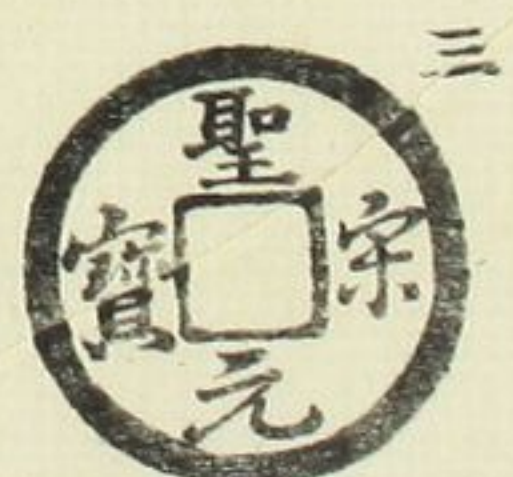


狭穿

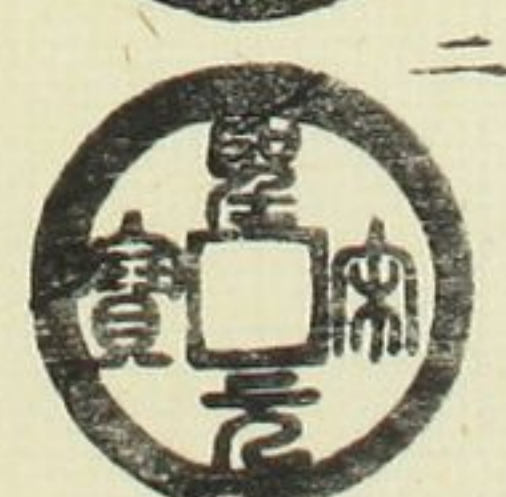


同穿

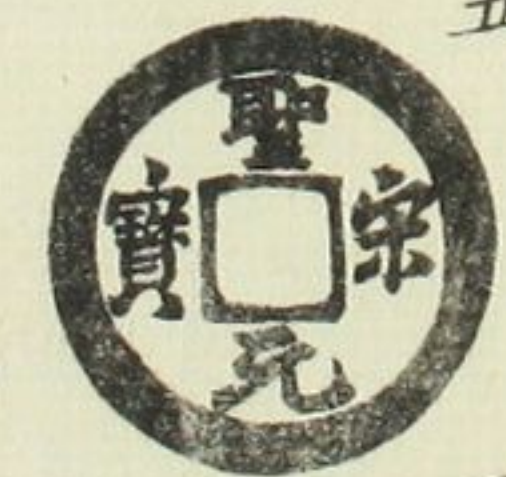
中樣小樣アリ



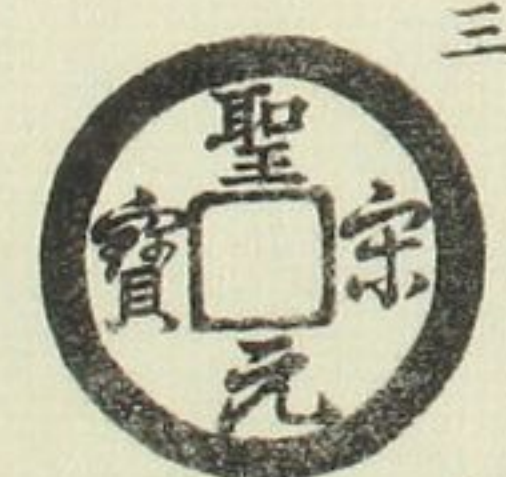
同穿



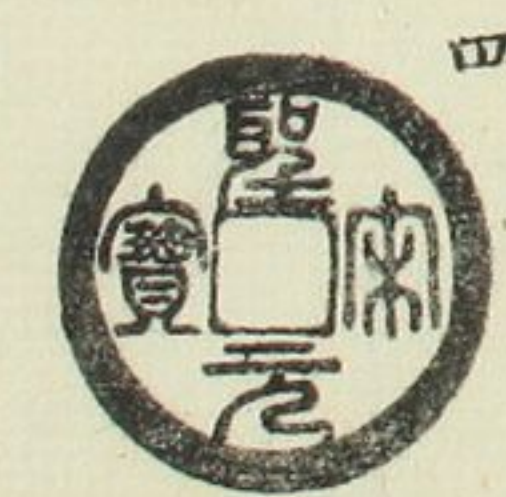
同上



美制



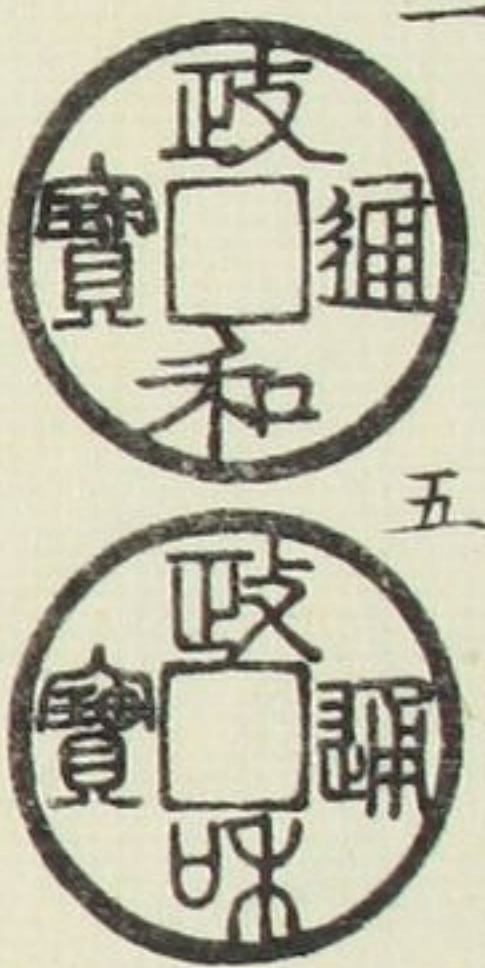
潤字



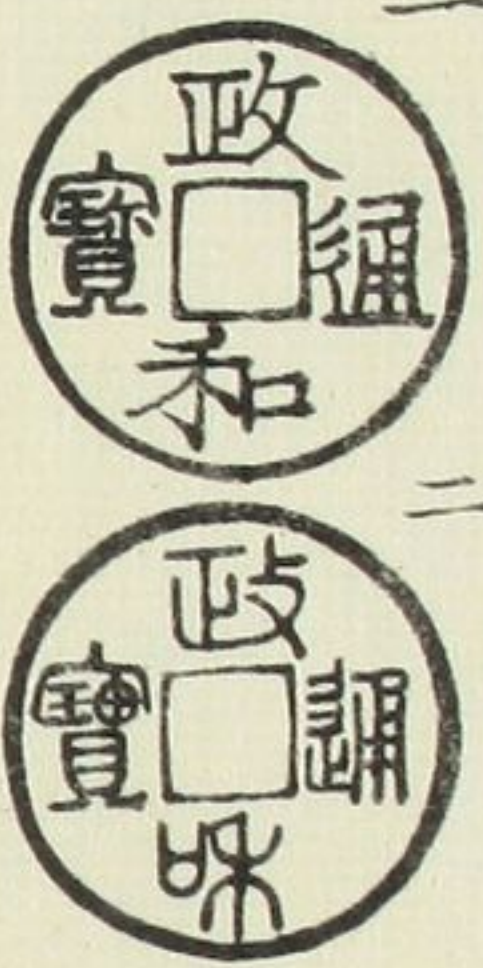
大元



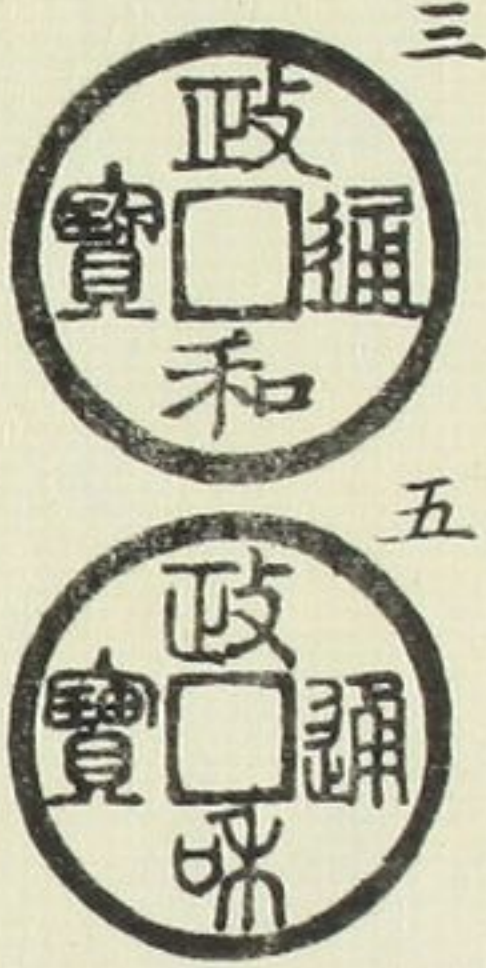
政和通寶
重和樣
大字
二
五



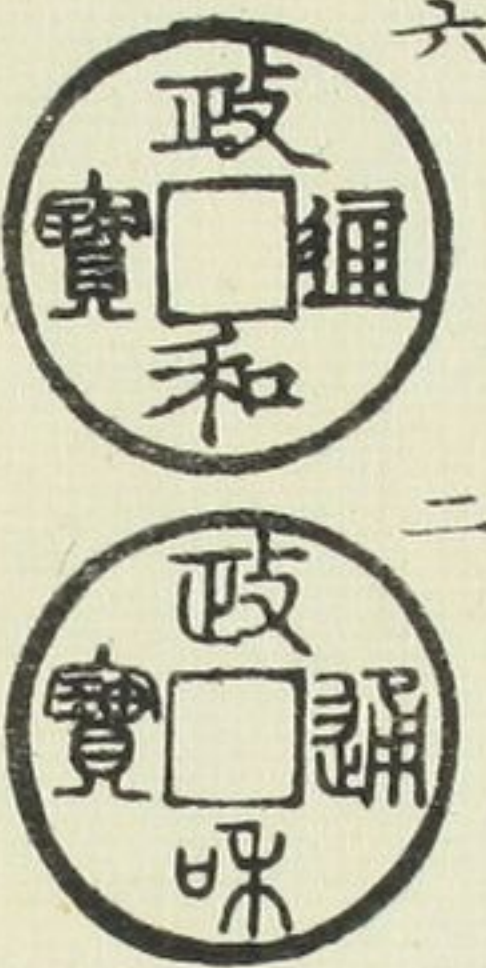
文政
濶和
二
二



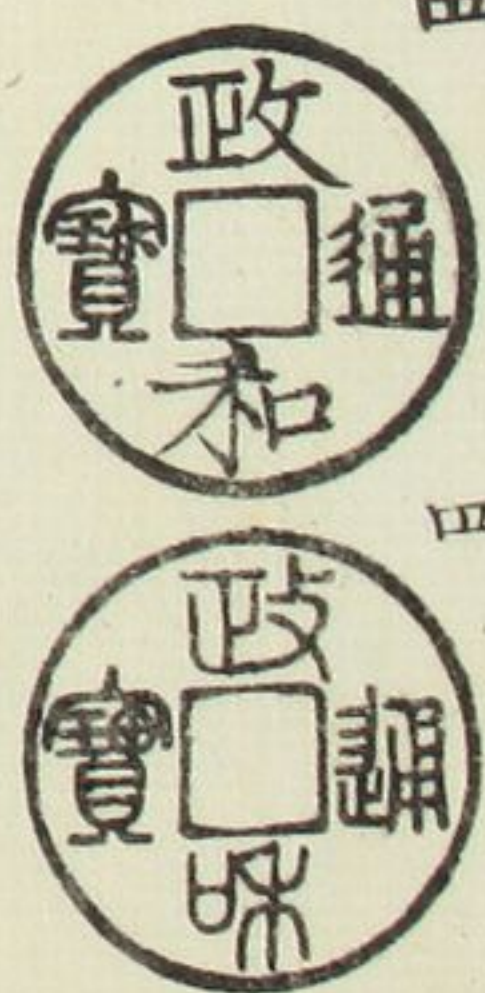
正字
三
五



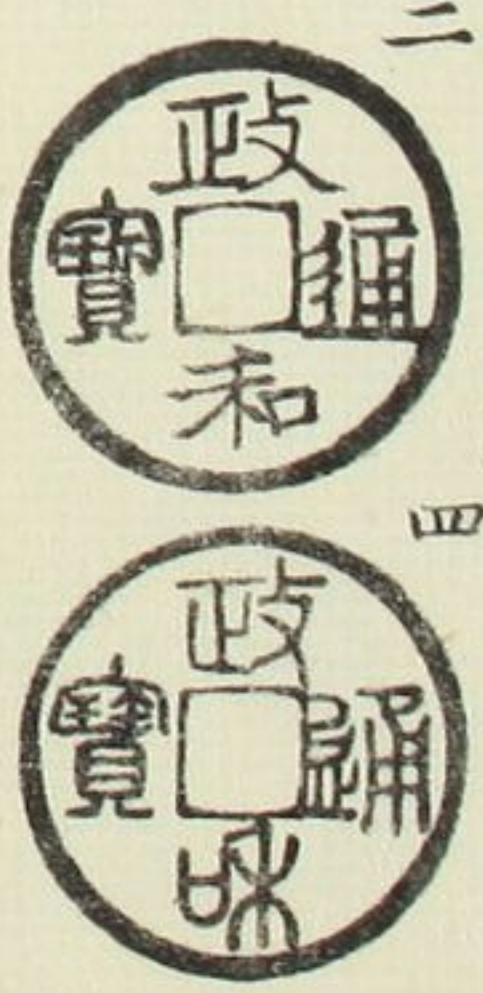
美制
昂政
六
二



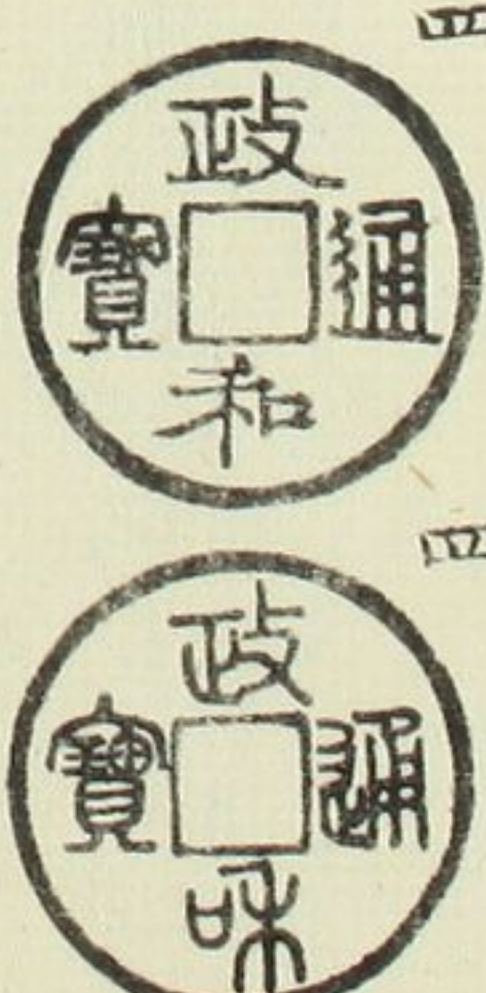
文政
四
四



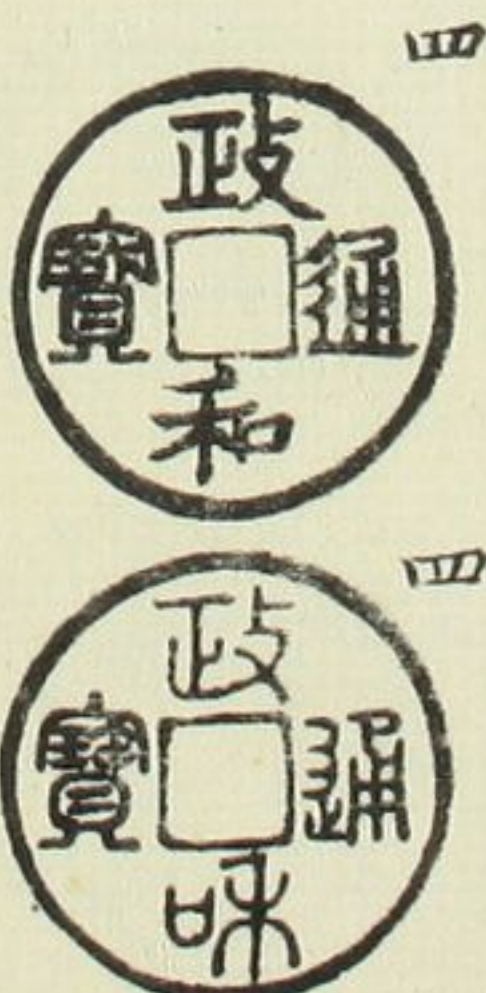
寬通
三
四



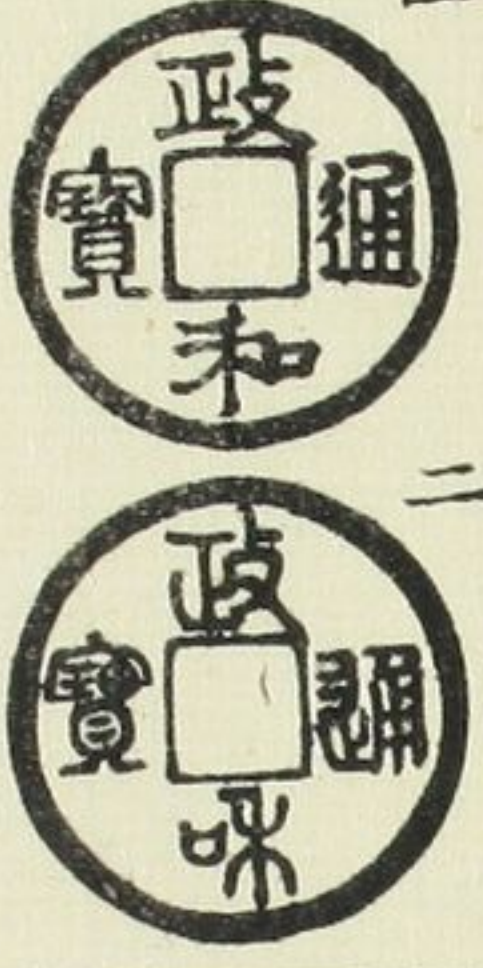
長通
四
四



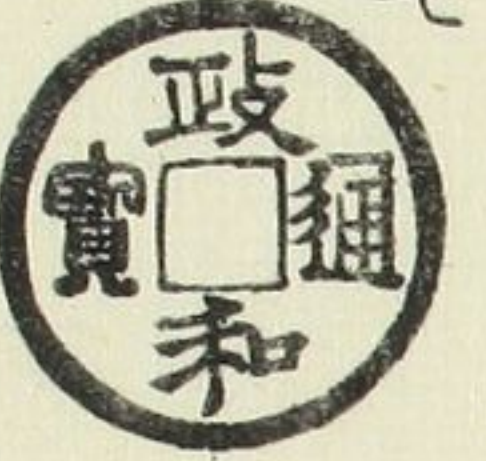
閣字
四
四



狹和
背闊緣
四
二



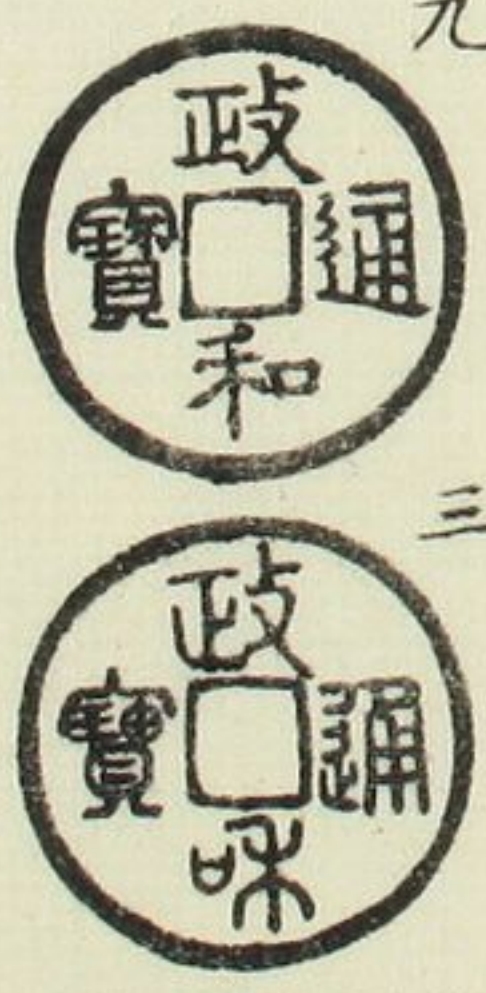
狹和
穿和
七



同穿
廣上
六
四



狹穿
寬通
九
三



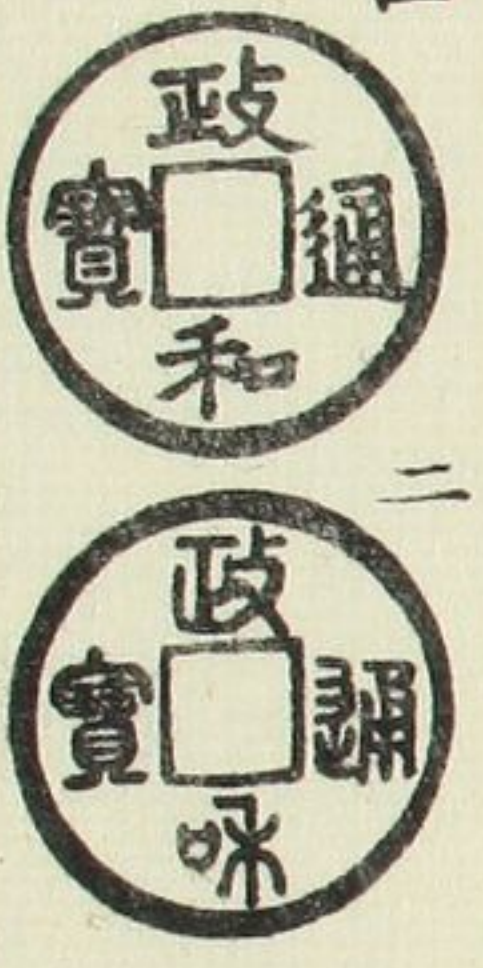
仰俯
三
四



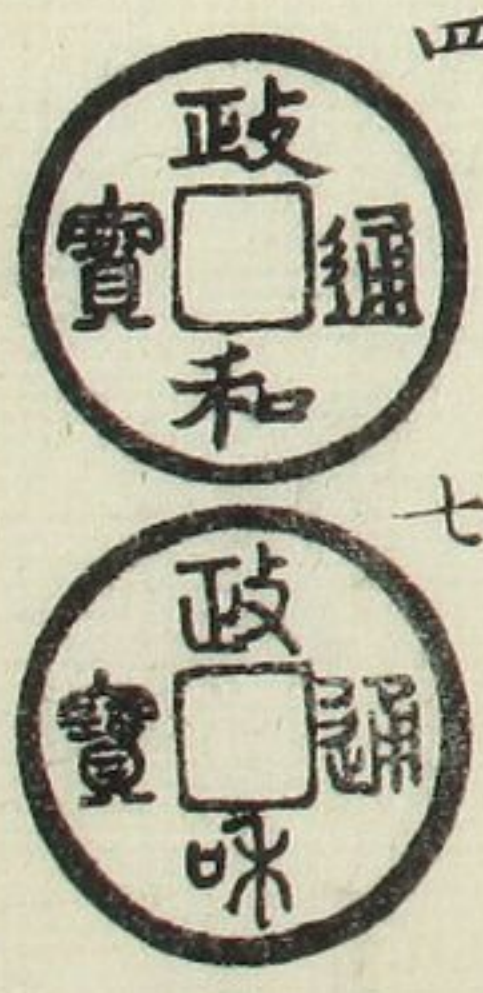
中穿
大字
二



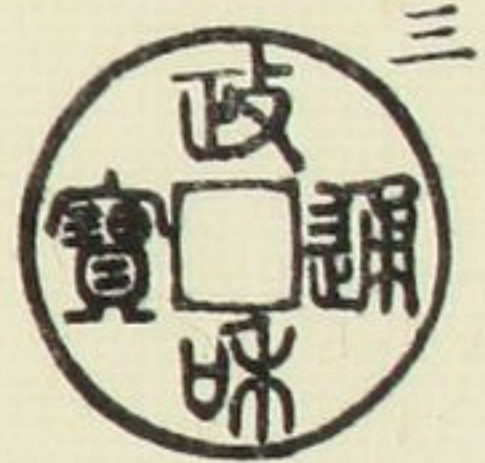
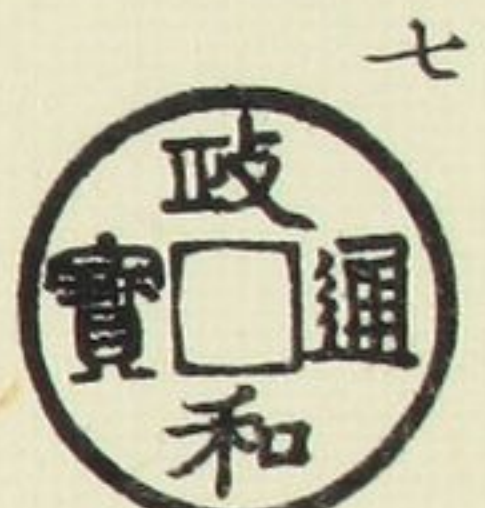
廣郭
四
二



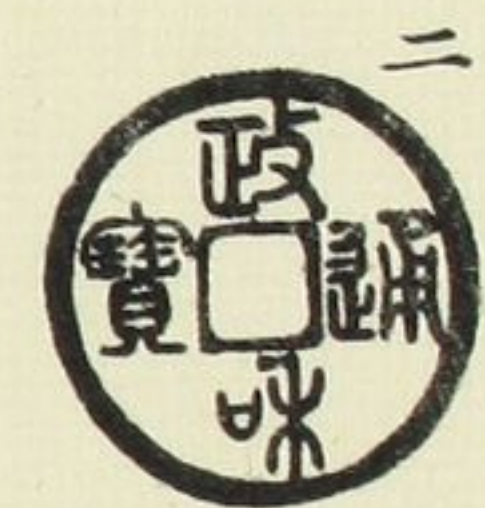
同穿
俯上
四
七



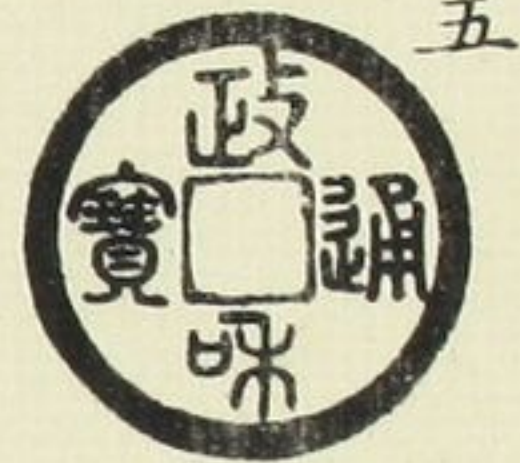
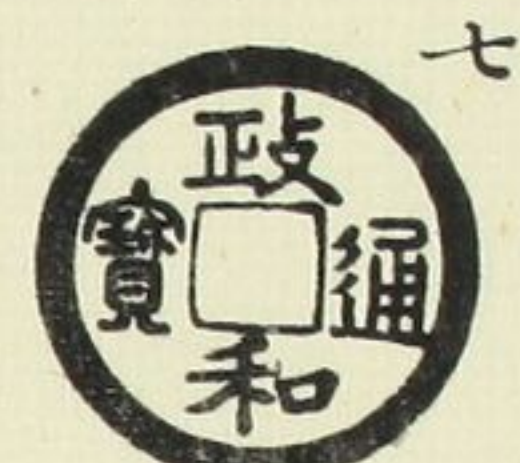
小政



狹穿
退和



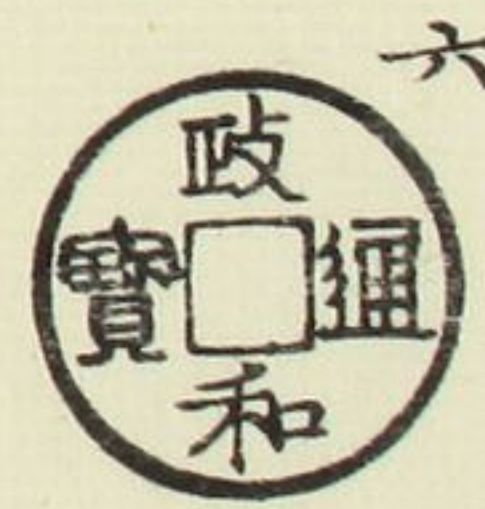
柳葉
長通



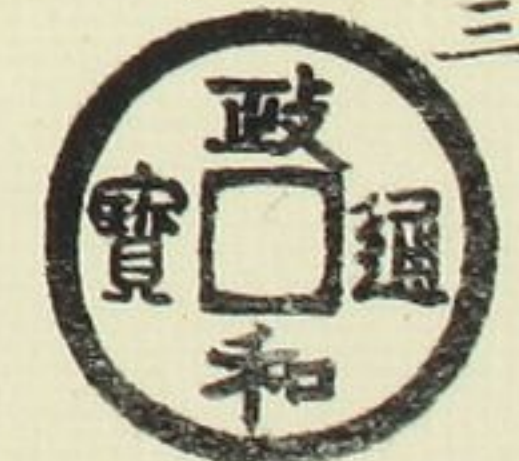
大文
政字



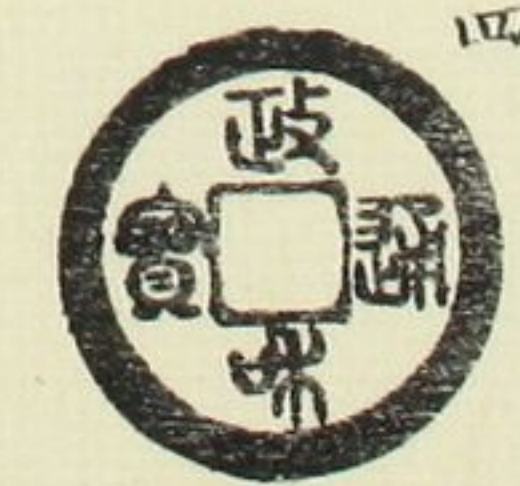
小政



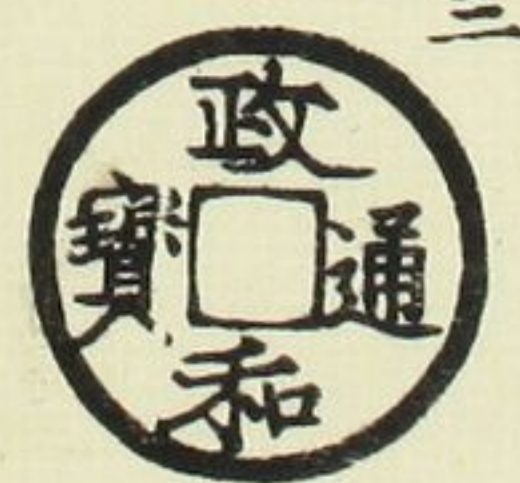
正郭
狹穿



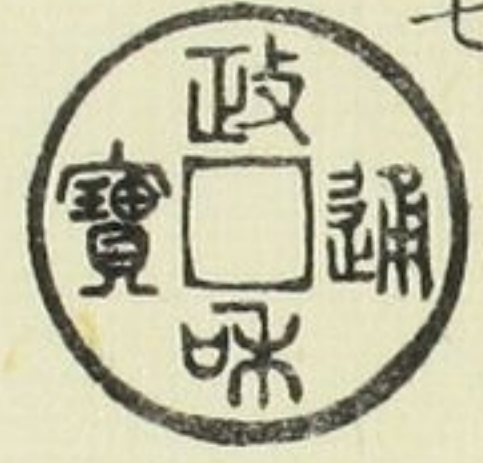
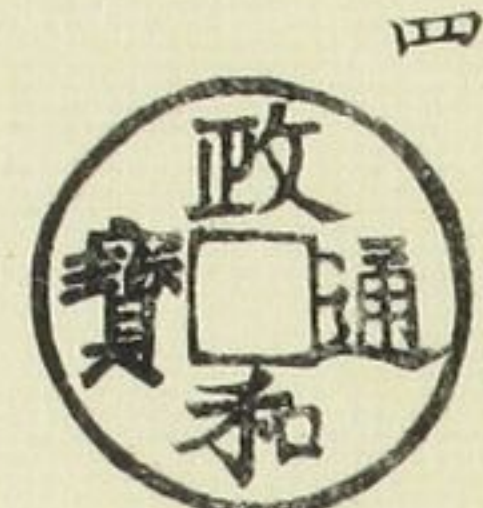
濶緣
小字



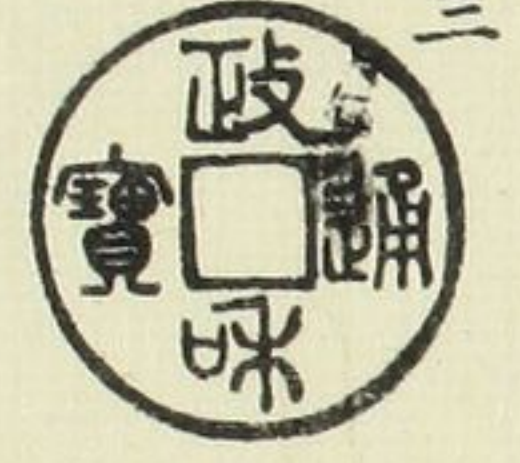
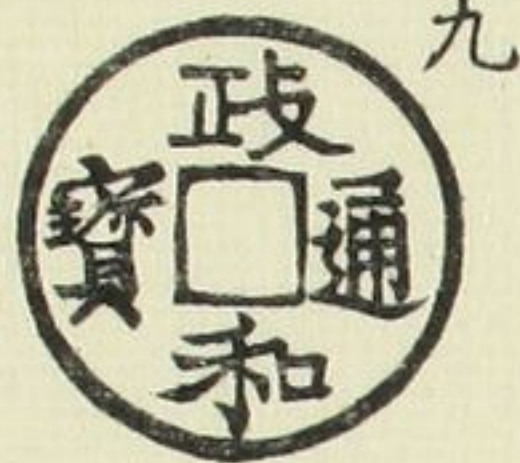
文政
抱正



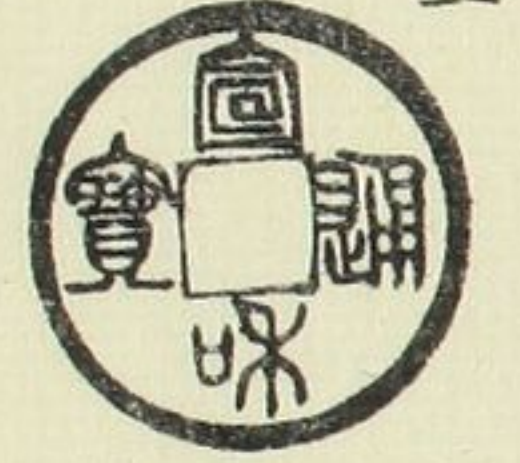
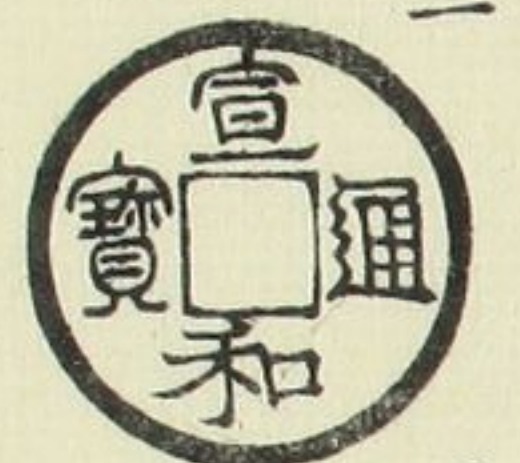
文政
御書



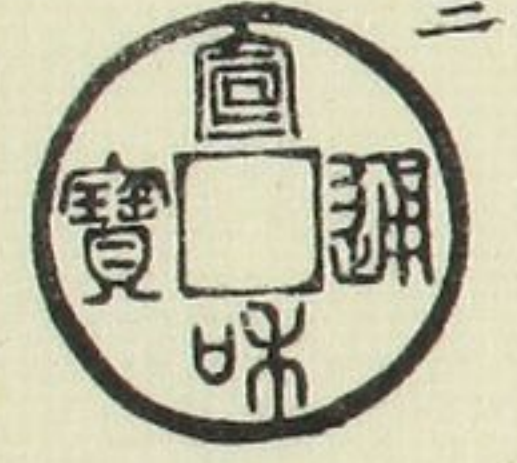
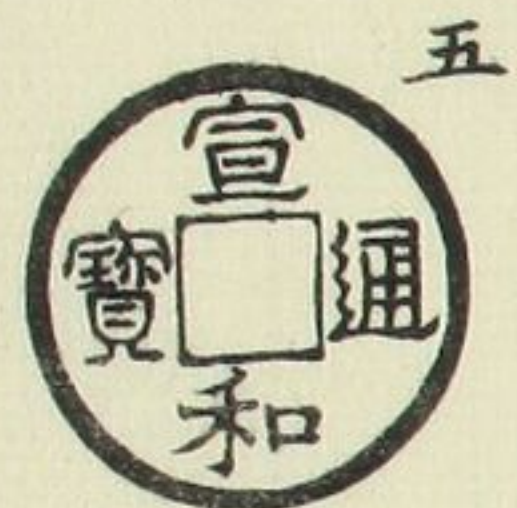
楷書
道勁



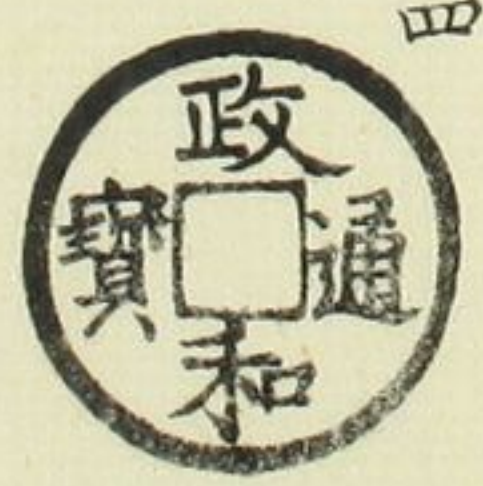
宣和通寶
美制
通異



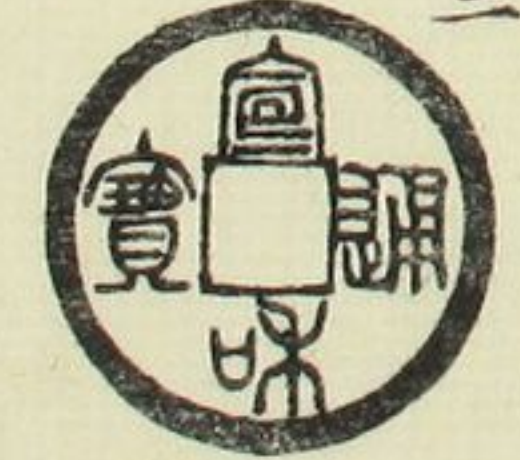
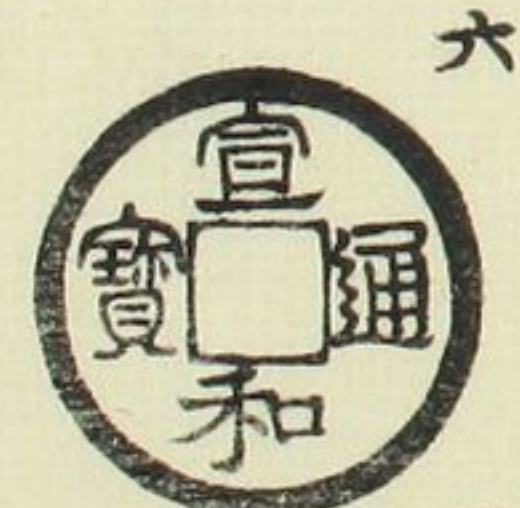
方冠



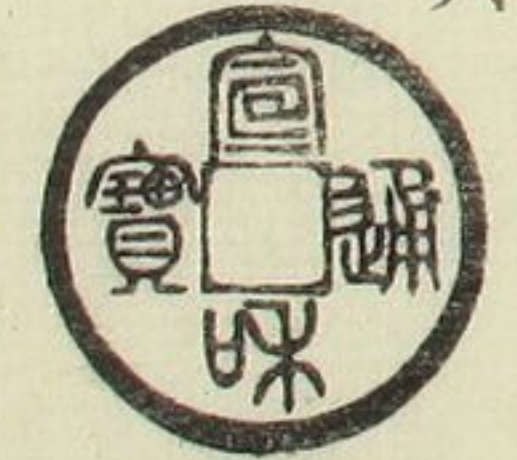
文政
曳尾



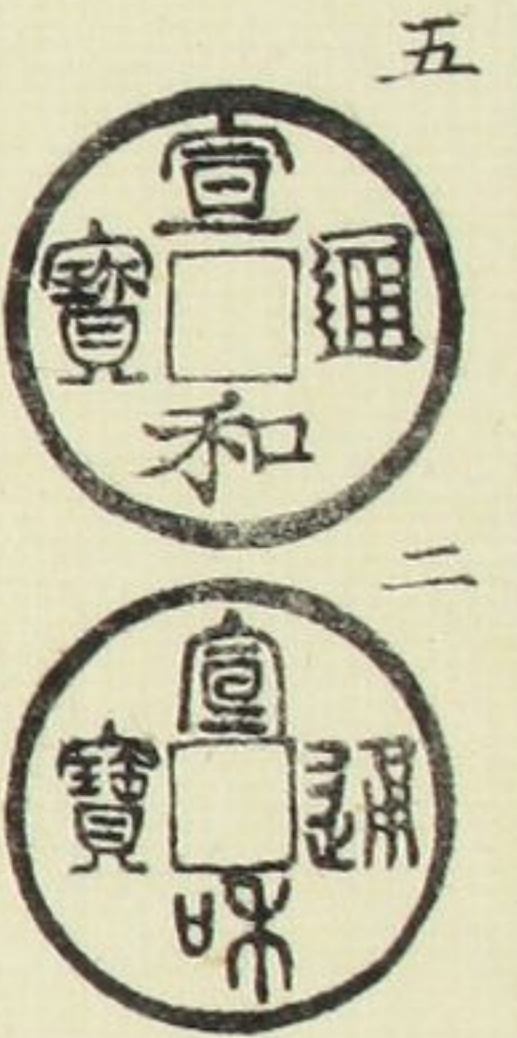
美制
閣緣



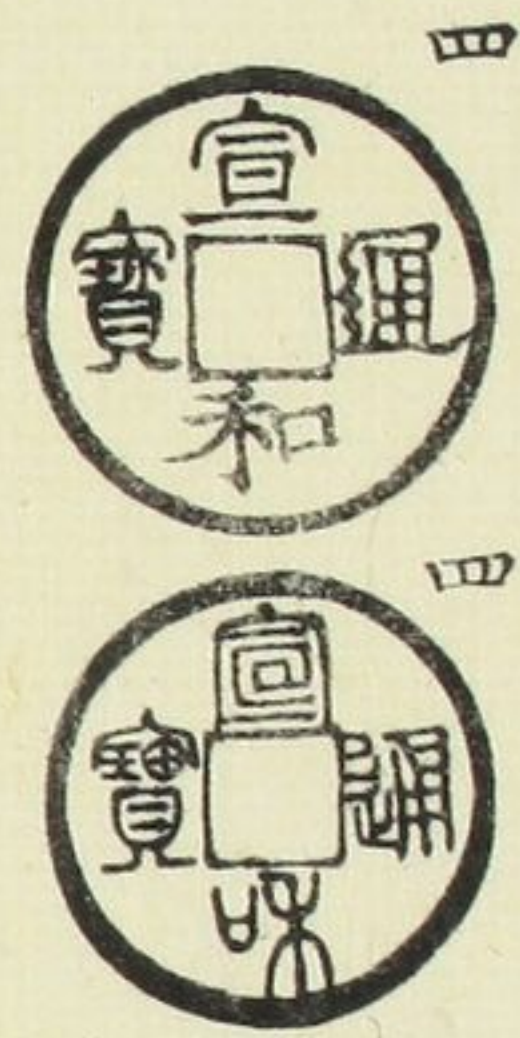
楷通



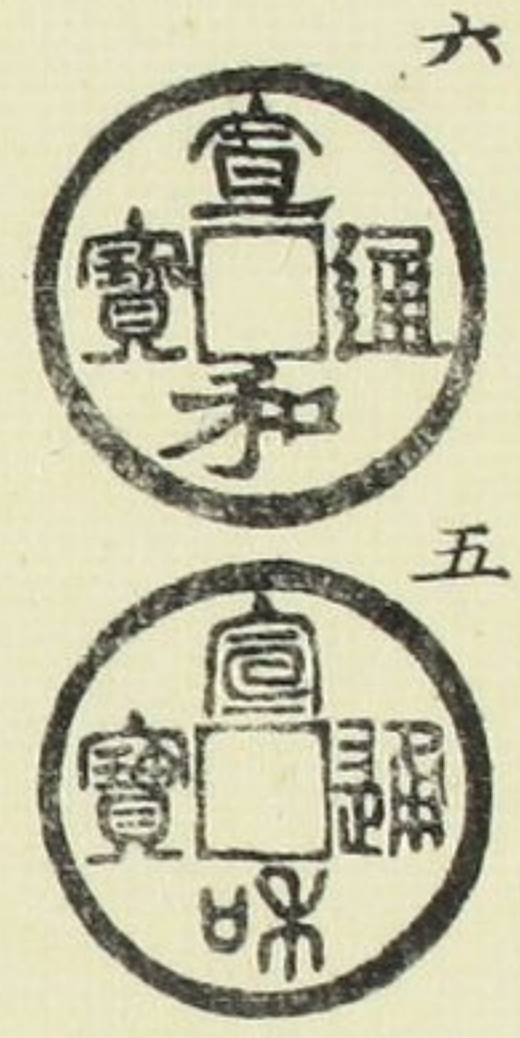
昂通寶



長寶



寶正足

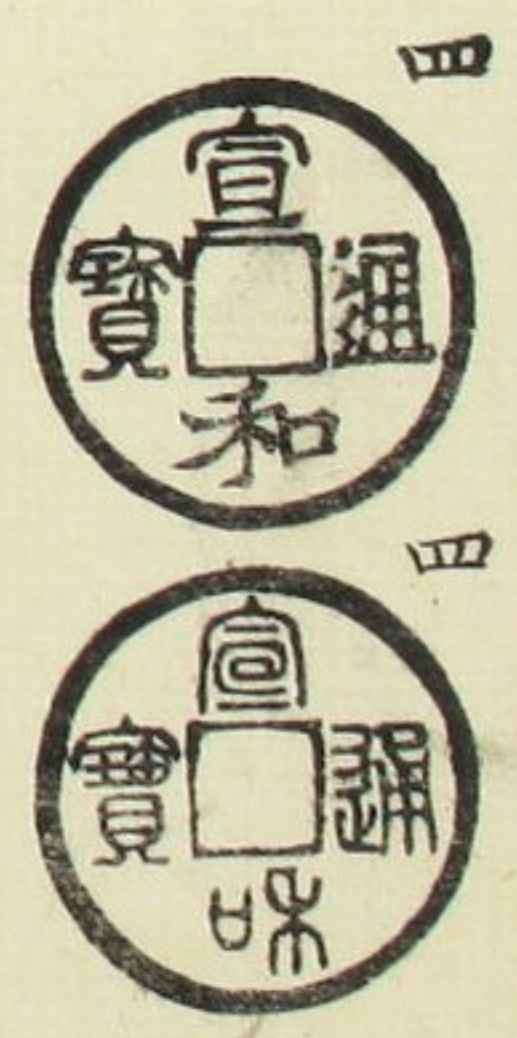


大字

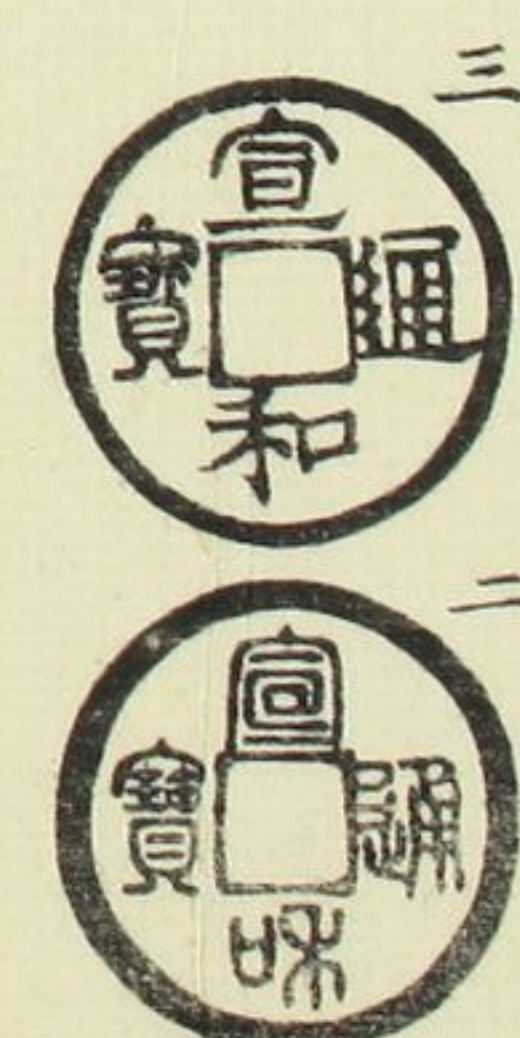


圓見寶

長通



背四出



小同和上



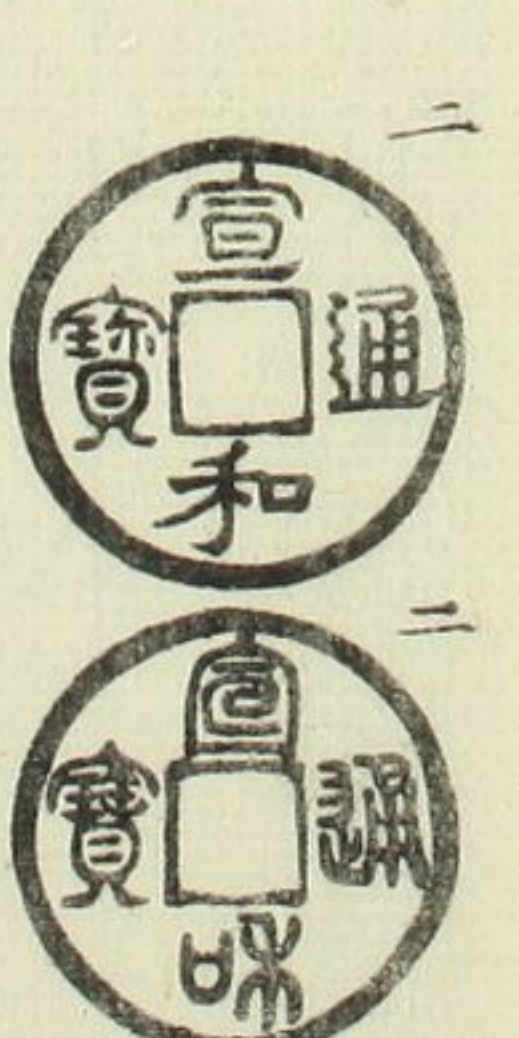
小同和上



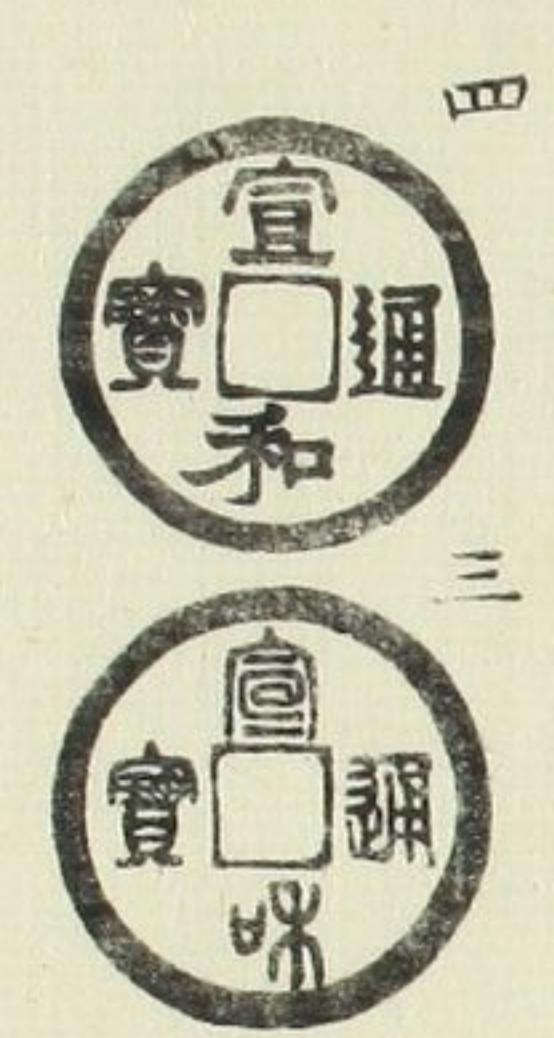
潤和



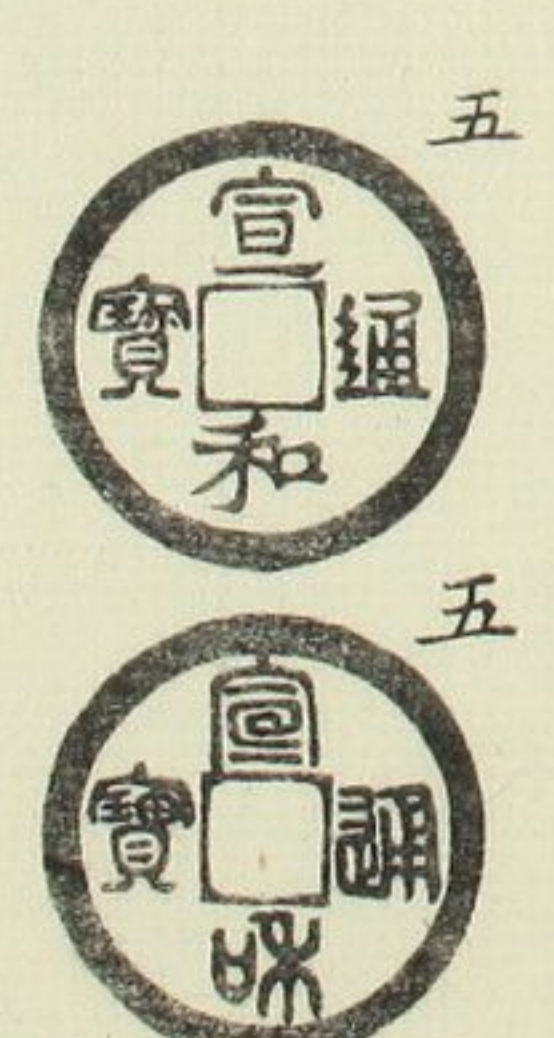
背肥郭



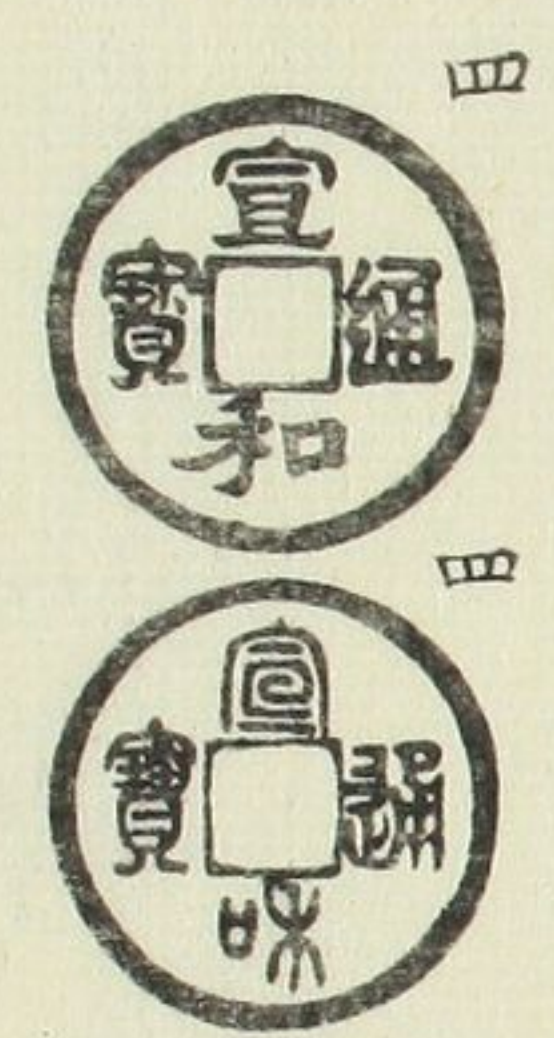
連小一字



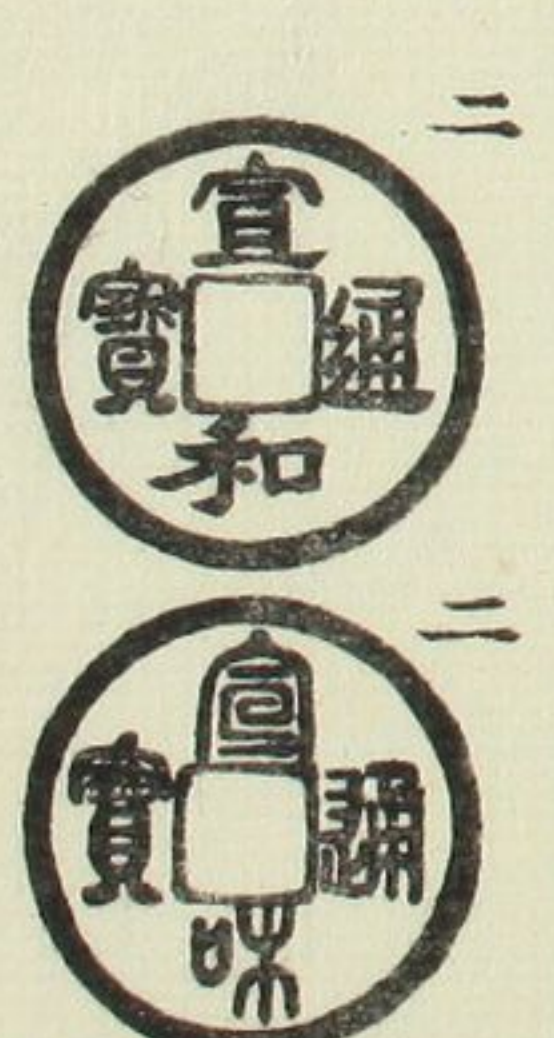
離小一字



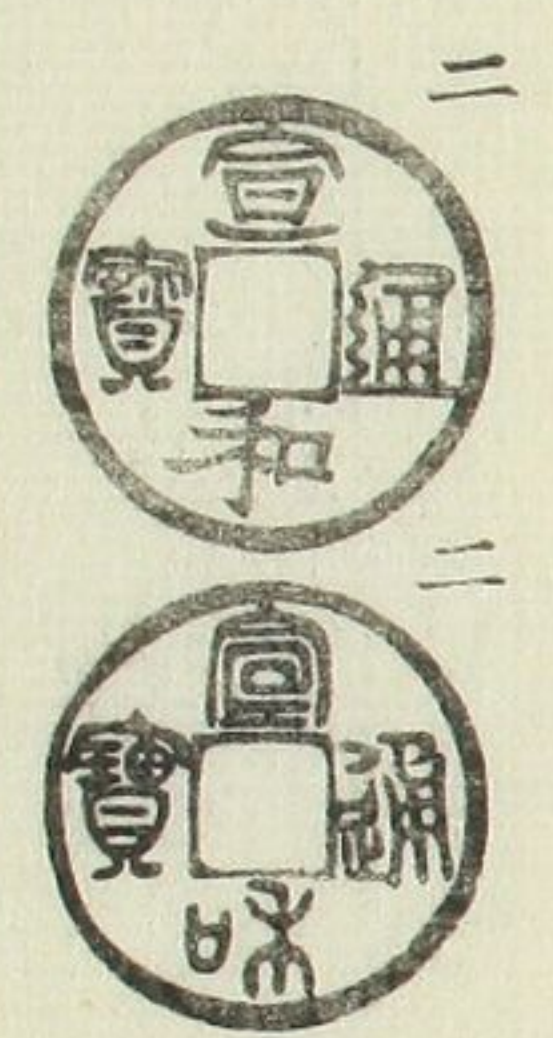
隔輪



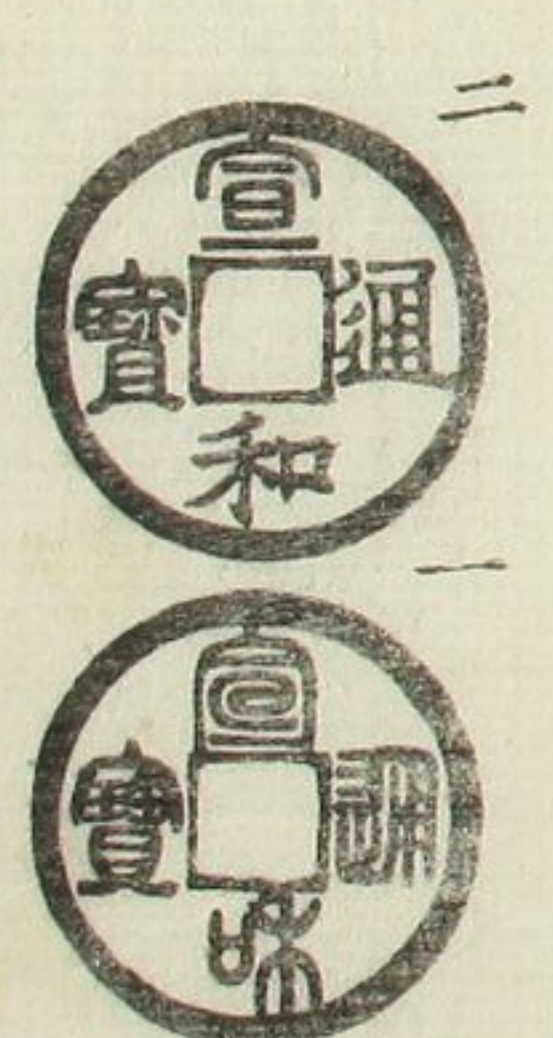
大同字上



巨頭



昂短通寶



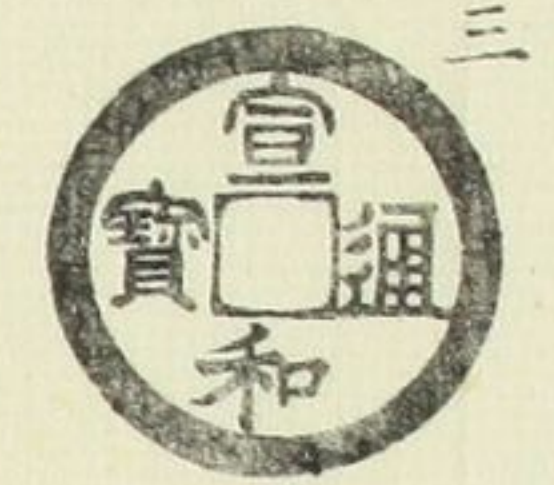
短字
大寶



大字
中未



同上
閣緣



斜
寶



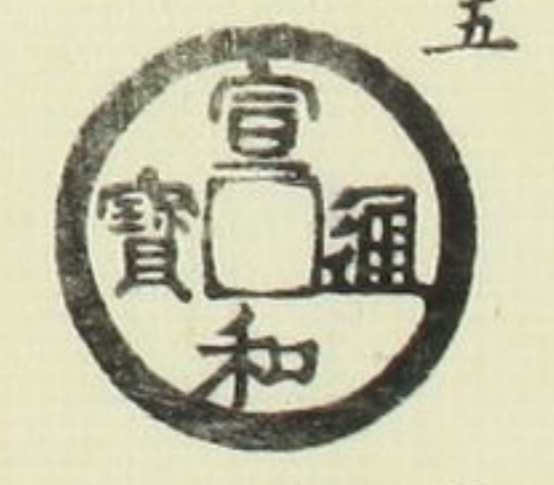
同上
降和



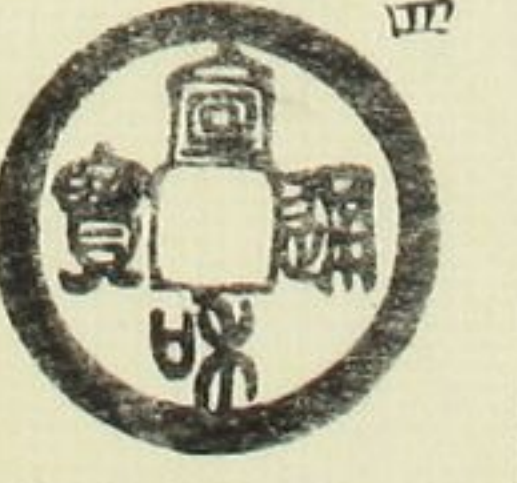
大字
背閣緣



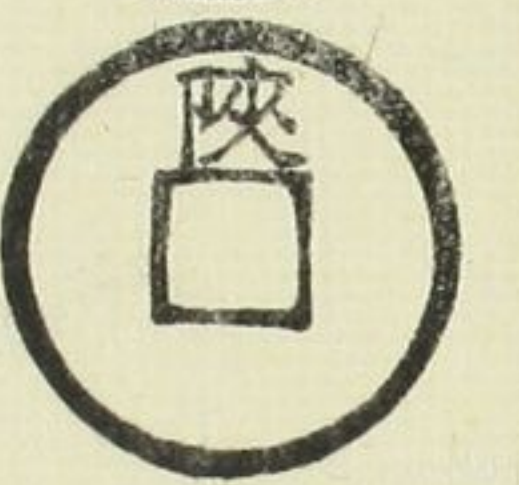
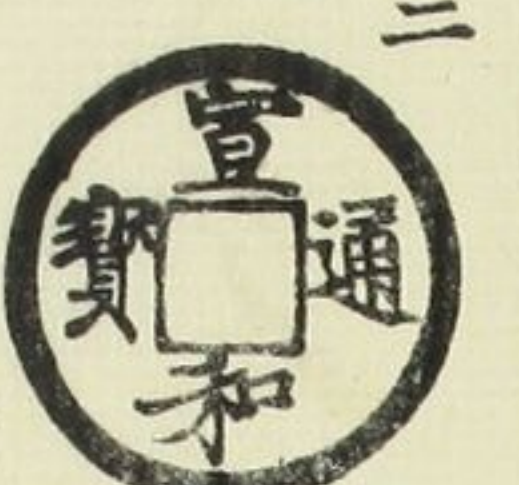
同上
小樣



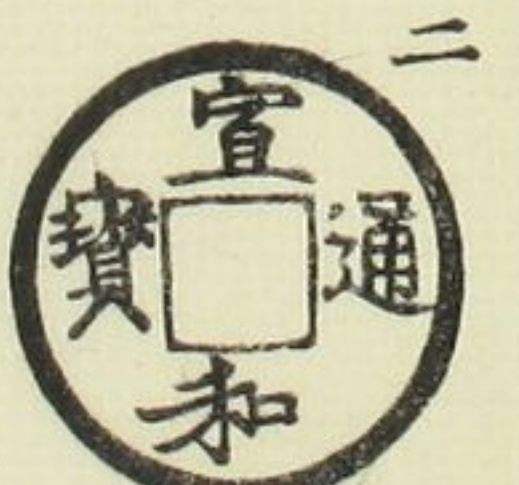
潤
緣



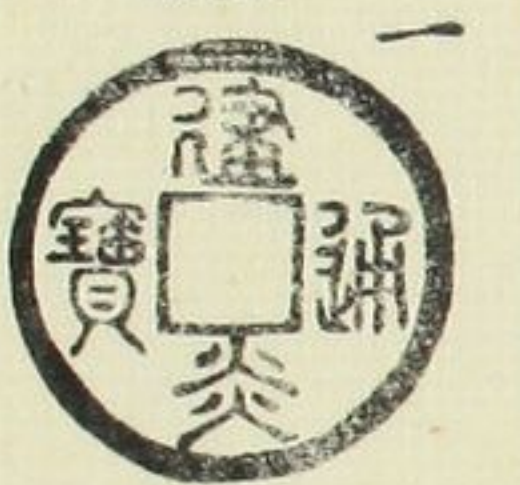
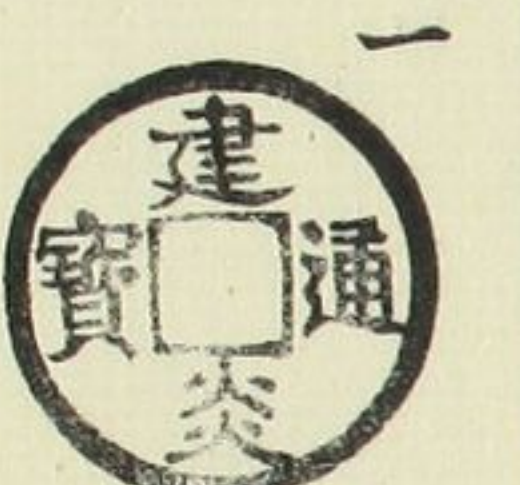
背
文



同上
大字



建炎通寶
大字
大樣



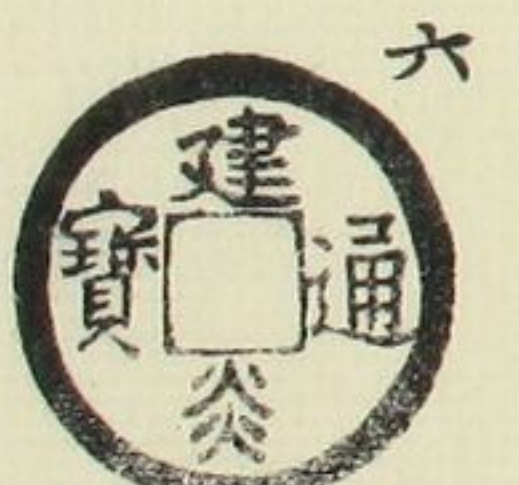
長字
大樣



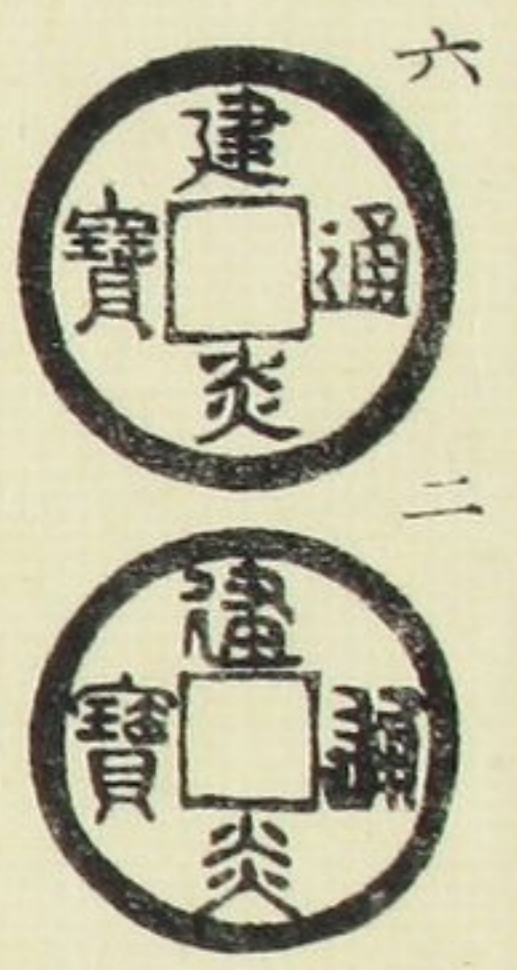
潤
字



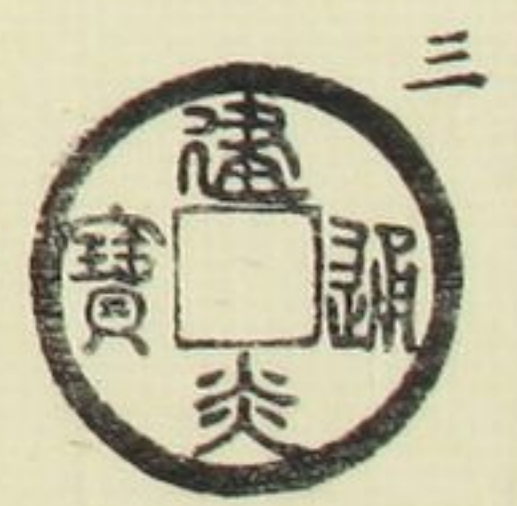
挑
四



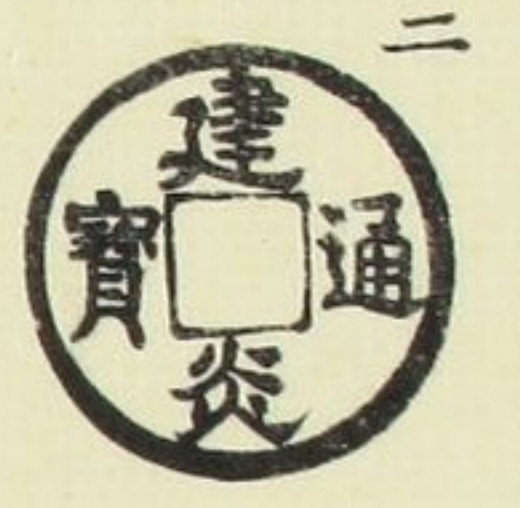
狹炎



細緣



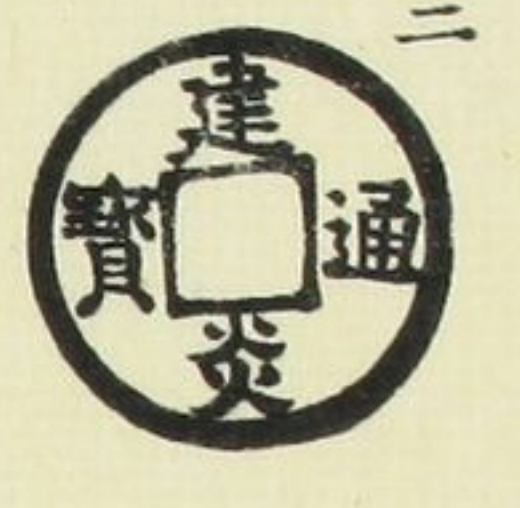
兩挑



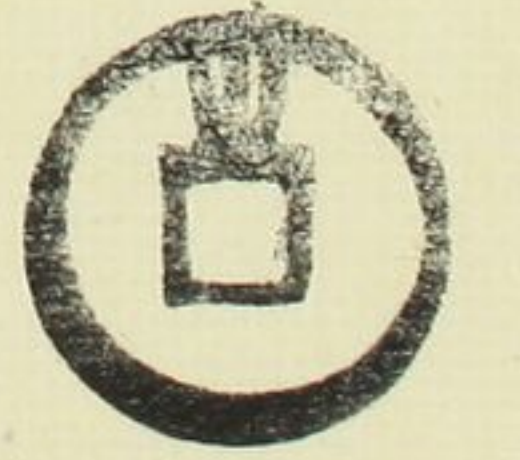
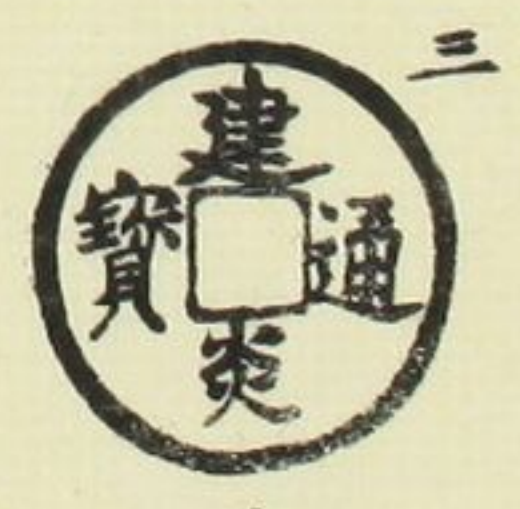
小字



肥郭



背文



文政十二巳丑年

尾陽琵琶橋西
一豐舍山孔章編
仲夏

書肆

名古屋本町七丁目

永樂屋東四郎

同

菱屋久兵衛

大阪心齋橋北詰北入西側

書肆

澤田幸助

通四丁目

