

符合泉志 二編

完





符合泉志二編凡例



一淳化元宝初編ニハ細縁ヲ著セリ此編ニハオナジ手ニシテ  
中縁ナルヲ圖ス

一同濶縁初編ニハ大字ヲ著セリ此編ニハオナシ手ニシテ  
小字ナルヲ圖ス

一至道元宝中縁昂元ヲ圖ス又細縁昂元アリ珍品ナレハ  
三編ニ出ス

一同龜宝大様ヲ圖ス又小様ナルアリ共ニ行書ナルハ  
未見

一天聖元宝昂宝初編ニハ大様ヲ著セリ此編ニハ中様



手圖スシゲキニヨリテ小様アレトモハブキツ又一種  
小様背細縁ヲ圖ス

一皇宋通宝隸宝初編ニハ廣穿ヲ著セリ此編ニハ狭  
穿ニシテ真書昂通ナルヲ圖ス

一同小通四出初編ニハ昂宝ヲ著セリ此編ニハ降宝ニシ  
テ篆書ノ宝寄郭ナルヲ圖ス

一治平元宝細縁ハ圖セルゴトク種類甚多シ

一熙寧元宝大字此編ニハ細縁ニシテ真書昂元ヲ圖ス

一元豐通宝初編ニハ中字ナルヲ著セリ此編ニハ小字ナ  
ルヲ圖スオサク得ガタキ品ナリ又大字ナルアリ珎

品ナルユエ二三編ニ出ス

一同狭穿廣郭此編ニ九對ヲ圖ス猶種類多ケレドシ  
ゲキニヨリテハブキツ

一同大字肥元廣穿二對ト背月文等トハ珎品ナルユエ二三  
編ニ出ス

一同大頭通ノ宝字仰点ハ別種ニシテ類品未見

一同横点宝昂元三對ヲ圖ス篆書ナルハナホ數品  
アレドモシゲキニヨリテハブキツ

一同緩点宝昂斜元ト昂仰元トハオナジ真書ニシテ  
初心ノ輩ハ見ワケガタカルベシ進通退通ヲ以テコ、



口ウベシ

一紹聖元宝長宝初編ニハ仰元ヲ著セリ此編ニハ俯元ヲ圖ス又中俯元ナルアリ

一元符通宝仰元ノ篆書ト左元ノ篆書トハ同品ノ如クニシテ初心ノ輩見分ケガタカルベシ仰元ノ篆書ハ符ノ字ノニシベン内郭ヘ反リ出シタルヲ以テ知ベシ

一聖宋元宝中穿大字ヲ圖ス真書ナルハ未見又狭穿大字ノ對アリ三編ニ出ス

一政和通宝面四出此編ニ二對ヲ圖ス猶アリトイヘドモシゲキニヨリテハブキツ

# 宋朝符合錢二編

初編ニモレタル對錢又手替錢ヲ圖ス珍品ハ三編ニ出ス十等ノ位附ハ初編ノ位ト同事ナリ

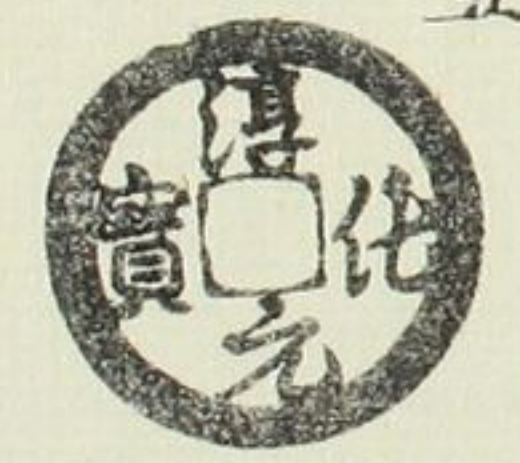
淳化元宝

中縁

二



五



八



濶縁 小宝

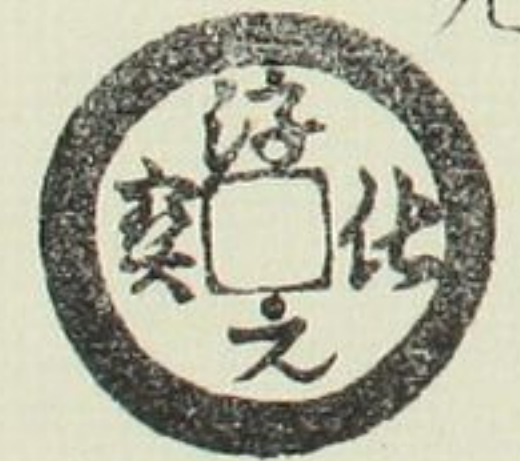
十



十

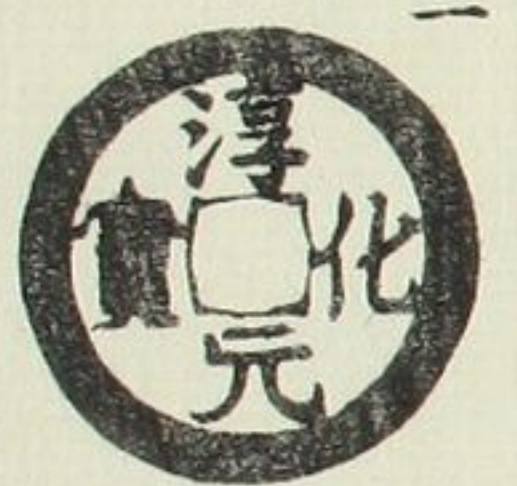


九



細縁手 濶縁

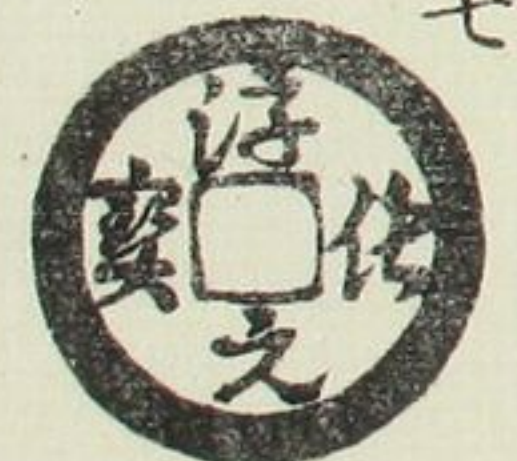
三



六

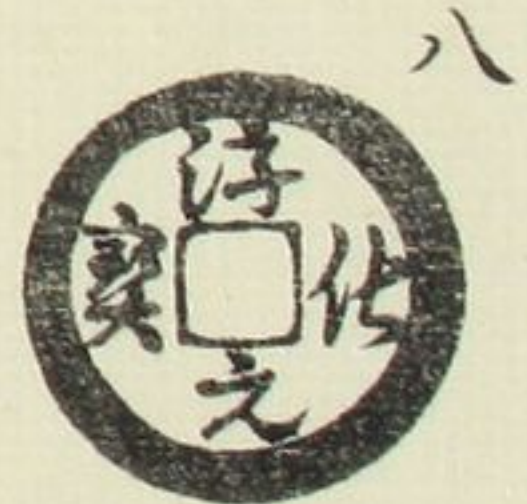


七

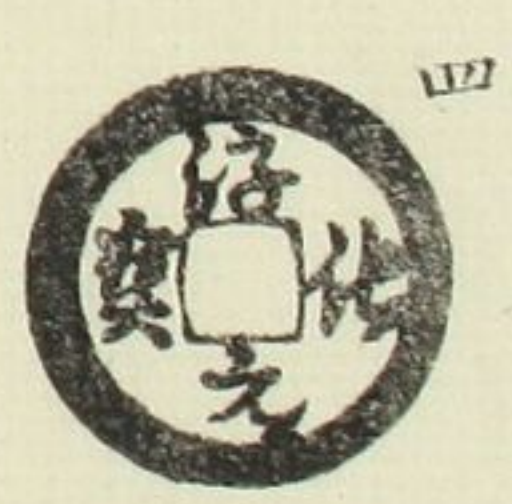
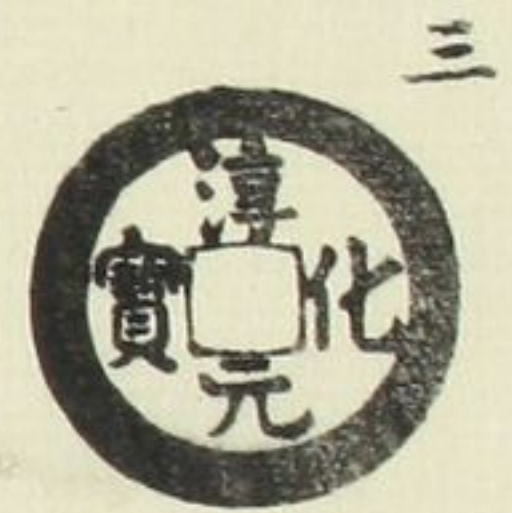




背細郭



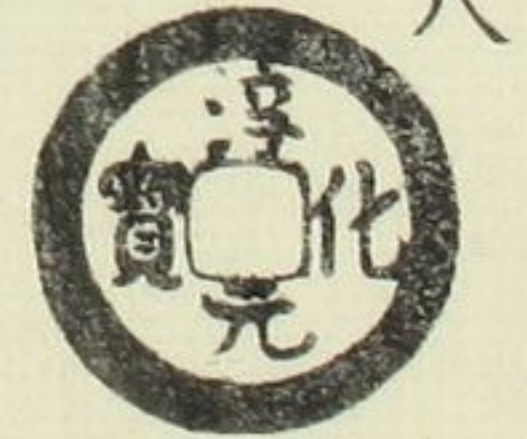
小樣



接郭



同上小樣

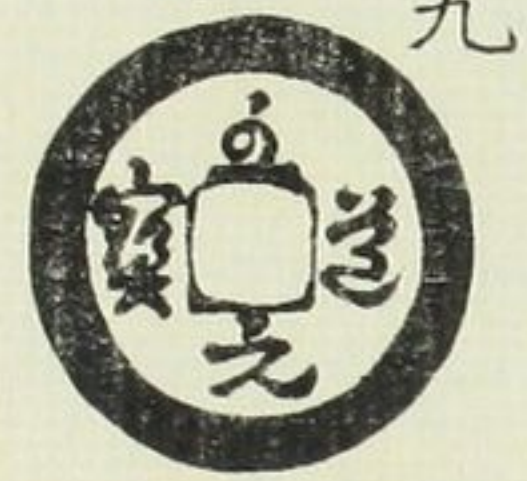


至道元寶

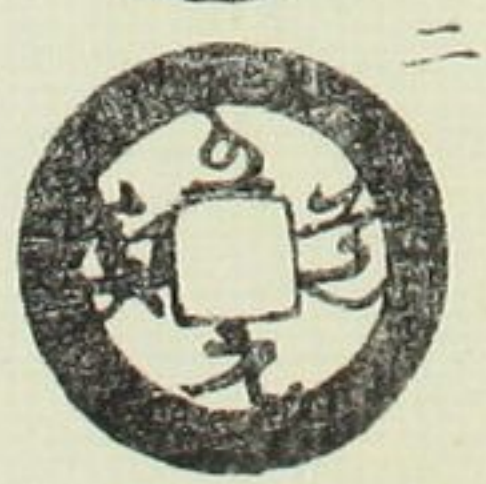
中緣 昂元



潤緣 昂元

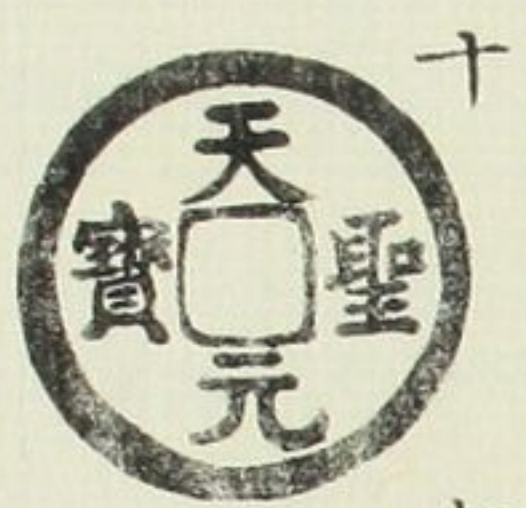


龜寶

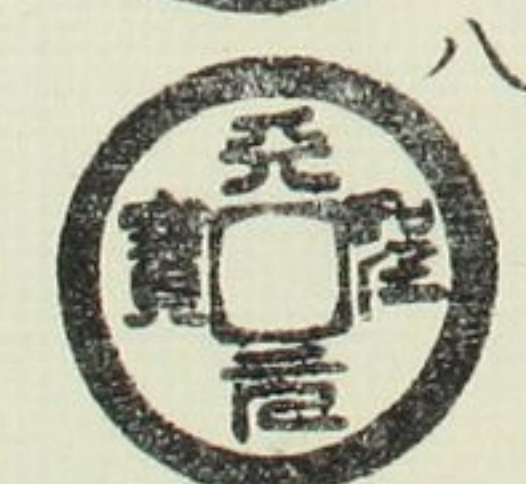
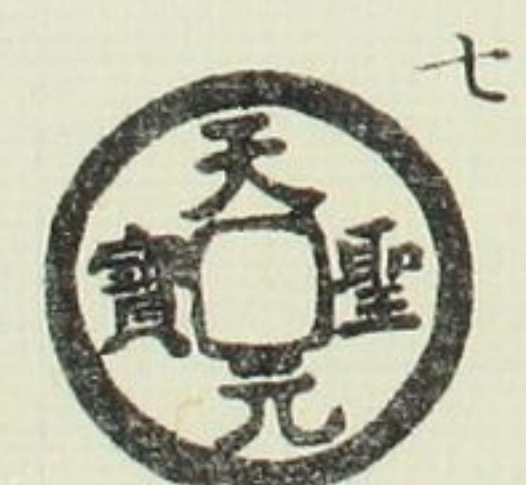


天聖元寶

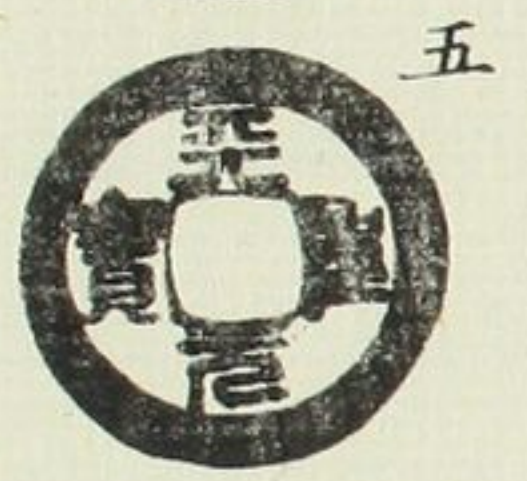
昂寶 中樣



昂寶 背細郭



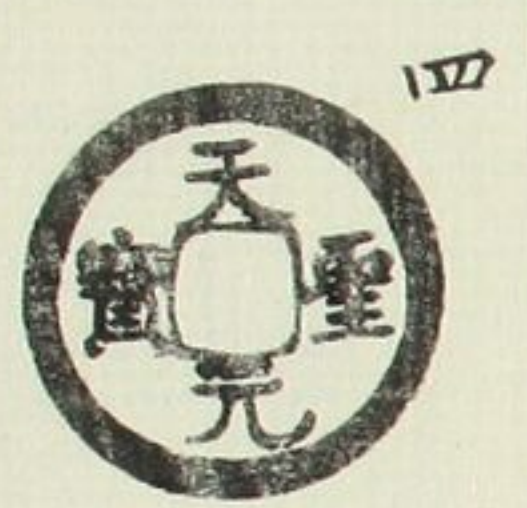
薄肉



美制

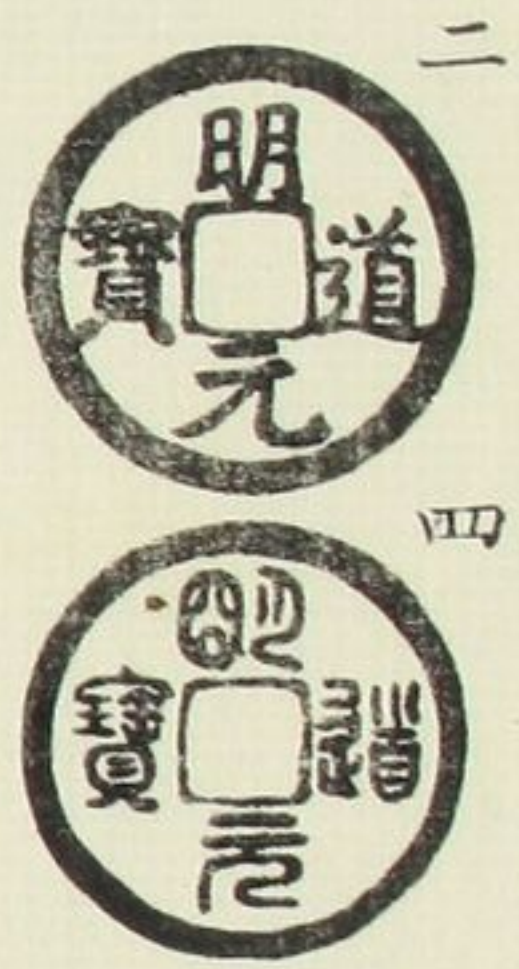


縮字

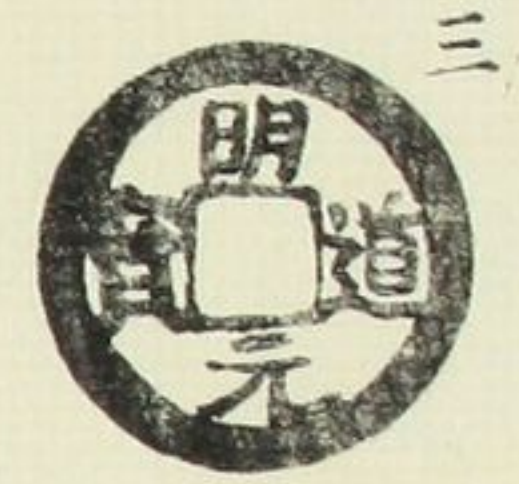




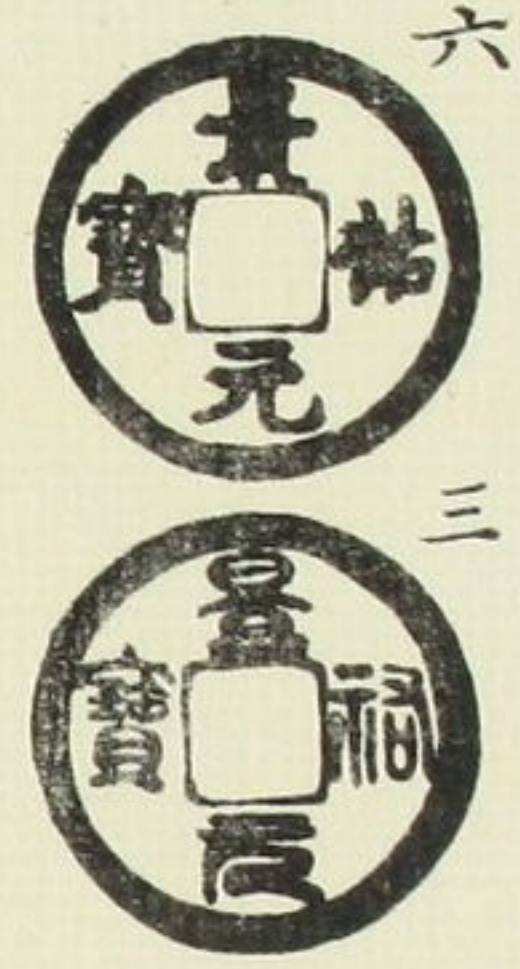
明道元寶  
大狹穿



異書



景祐元寶  
陰郭



同上  
小字



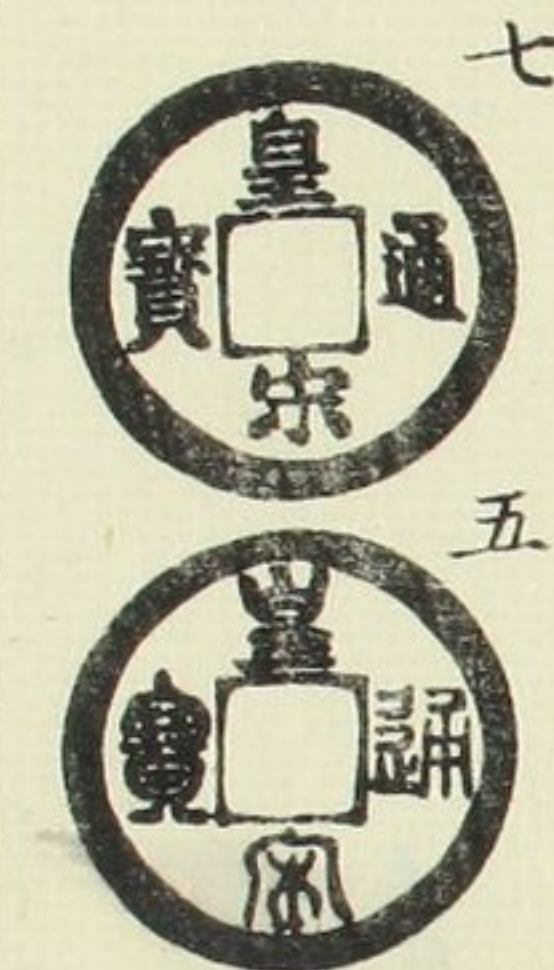
皇宗通寶  
細緣



背潤緣  
昂寶



四出  
降寶



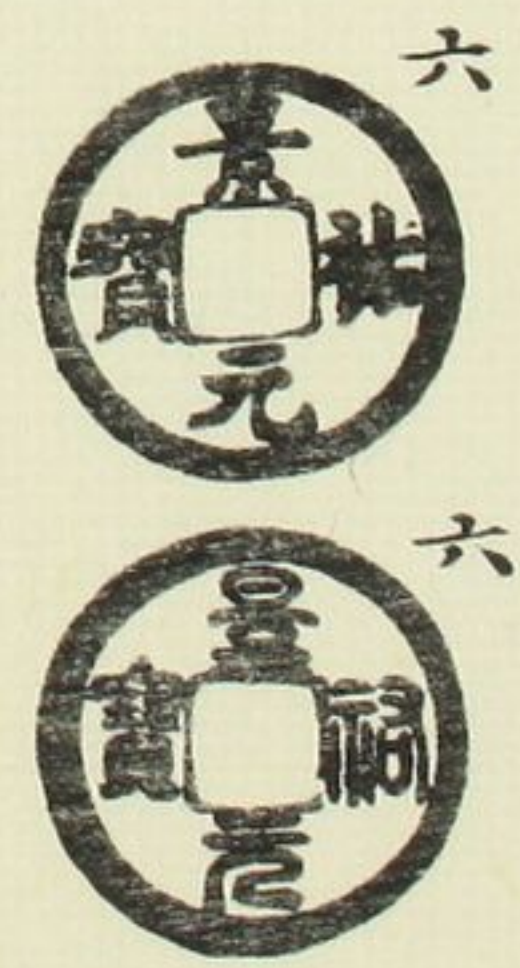
隸通寶



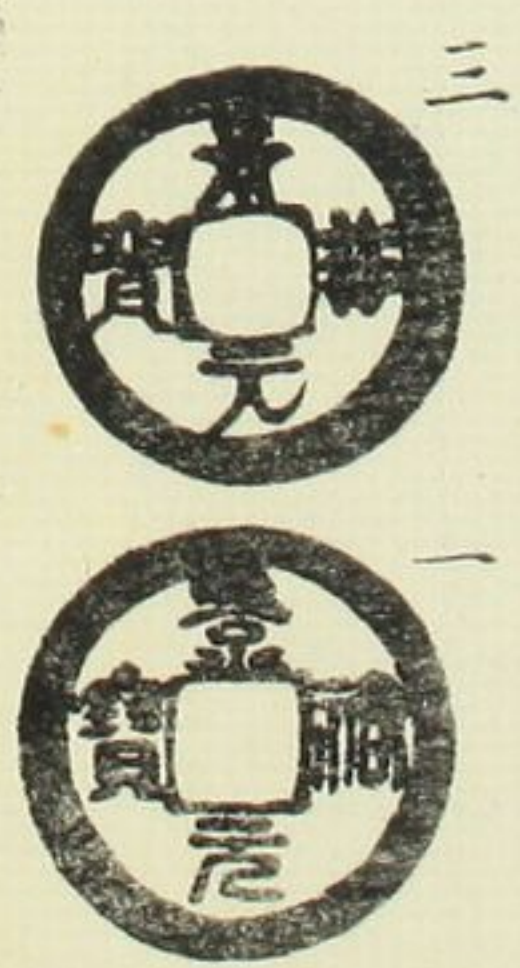
細郭  
直寶



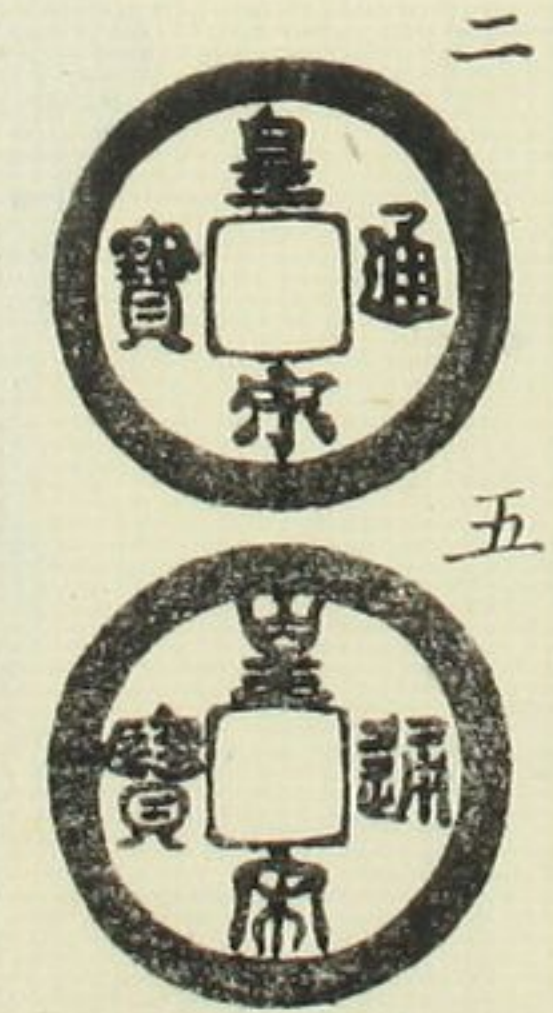
濶緣  
小樣



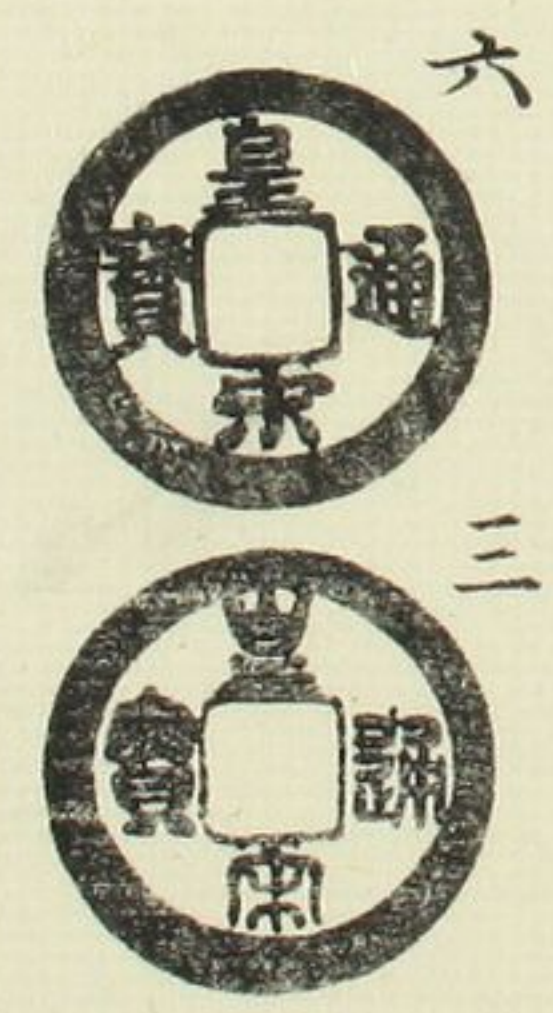
異書



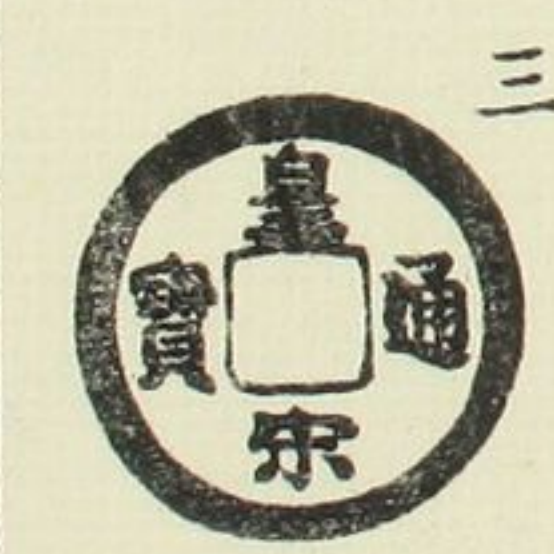
隸穿寶  
狹



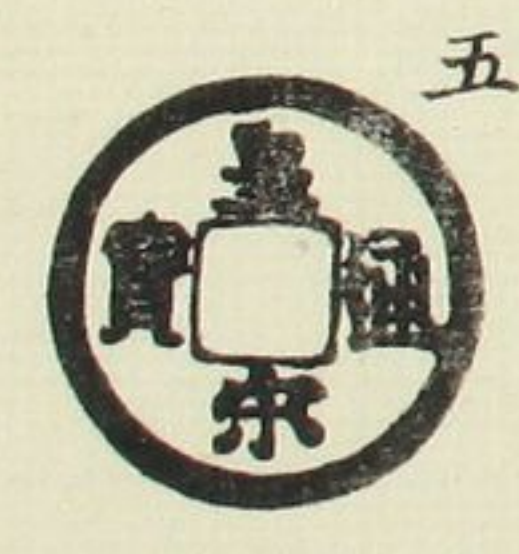
通離郭



隸通寶  
小

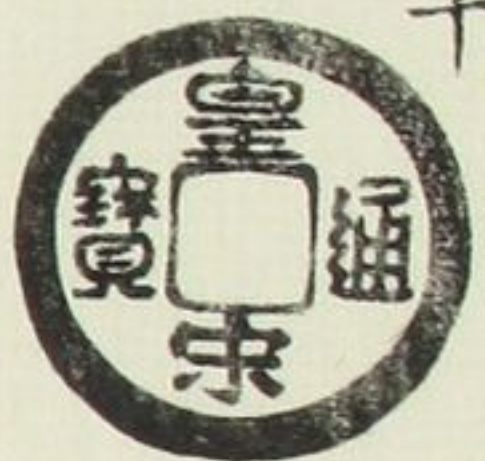


隸通寶  
斜





隸書 十



縮字 四



木宋 十



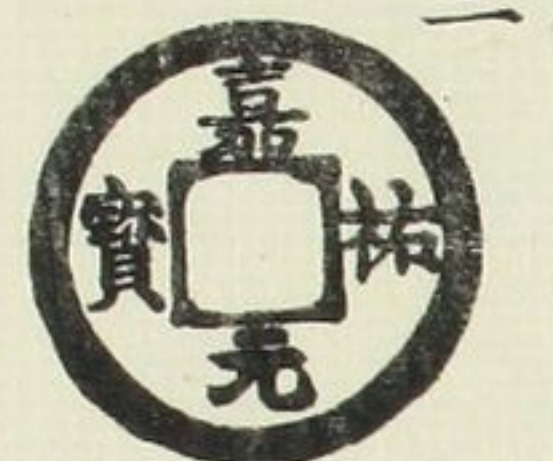
連輪郭 六



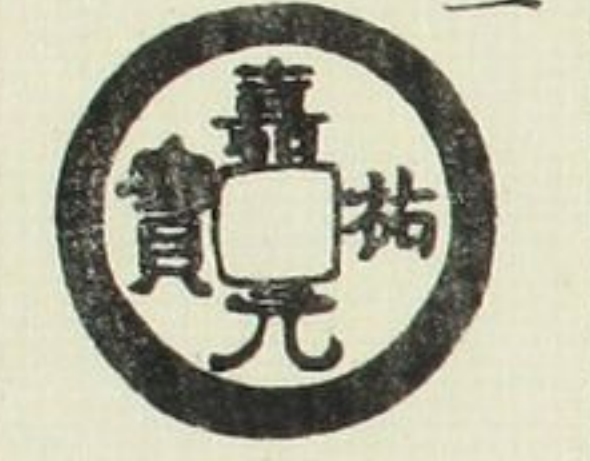
嘉祐元寶 八  
狹穿 八  
俯嘉 八



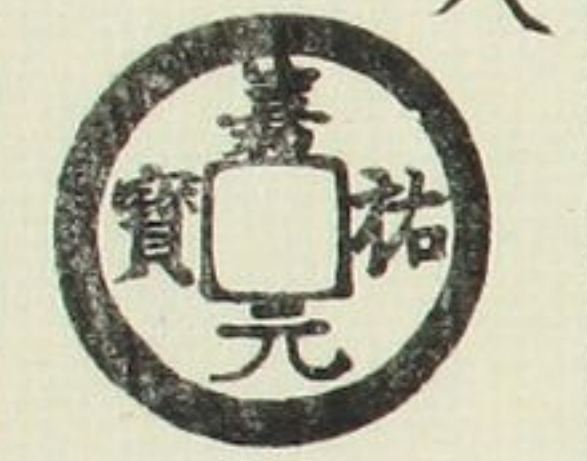
肥郭 三  
昂元 三



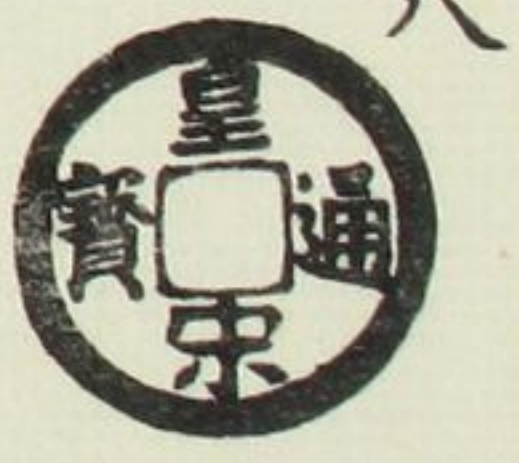
接郭 三



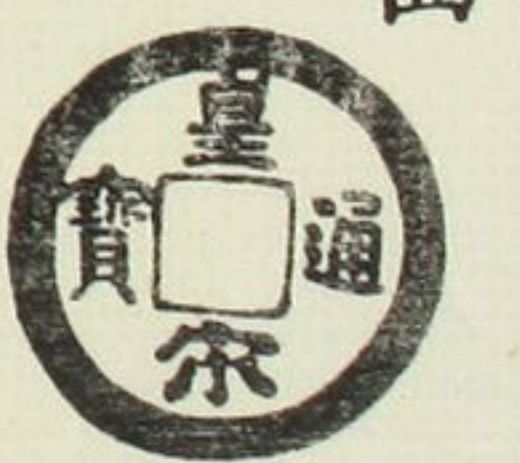
廣穿 八



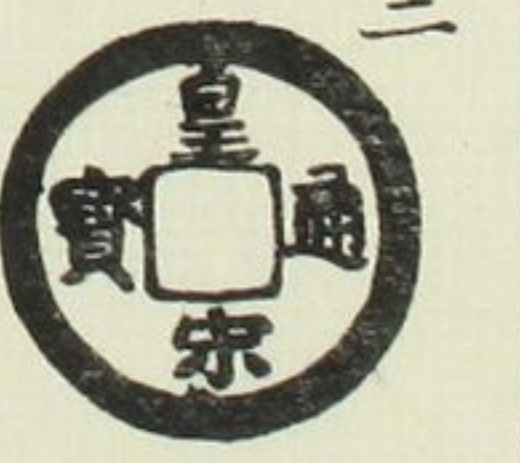
大宋 八



斜縮字 四



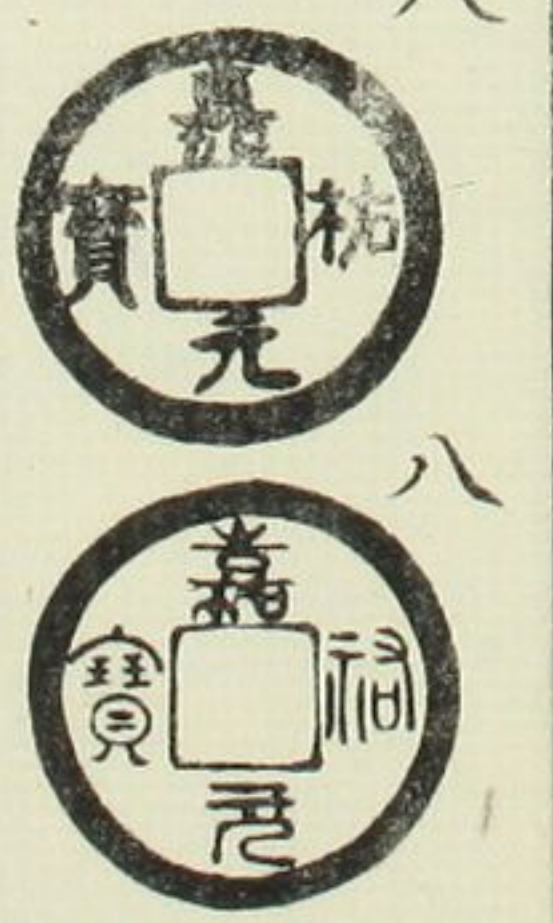
小字 三



大貝室 五



四出 八  
俯元 八



美制 九



左元 四



濶字 三  
濶緣 三





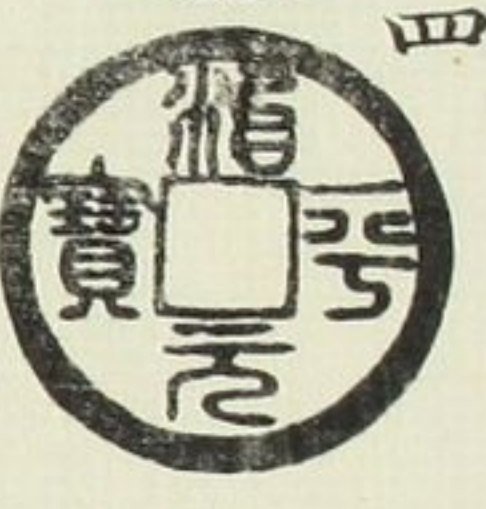
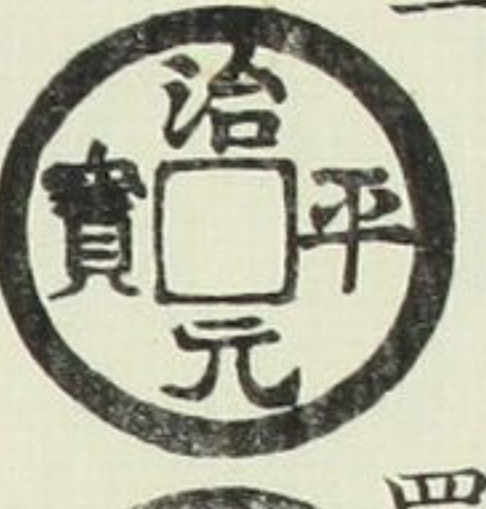
潤祐



仰嘉



治平元寶



大字

內斜平

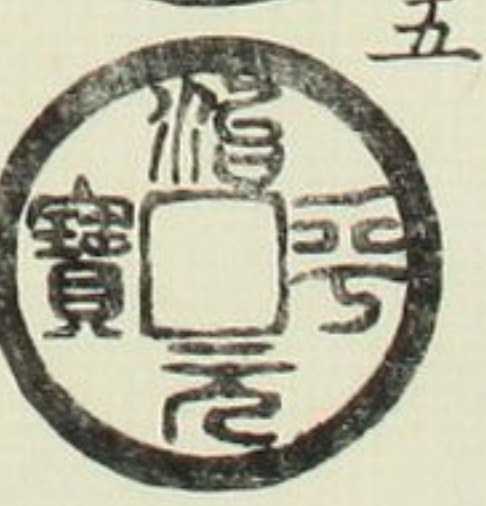
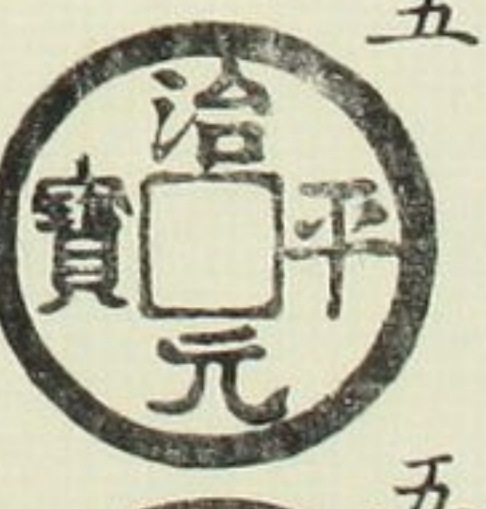
潤祐緣



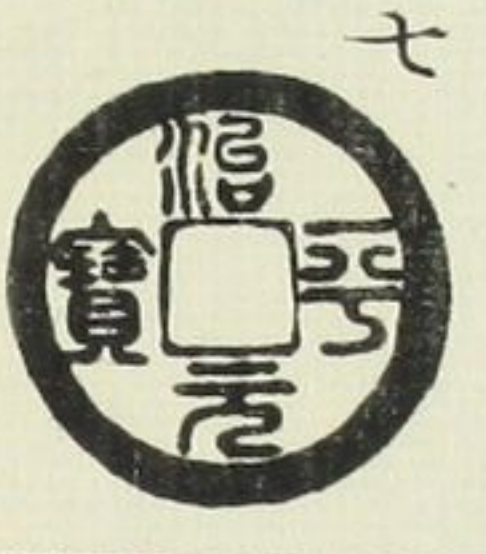
潤祐上



大字



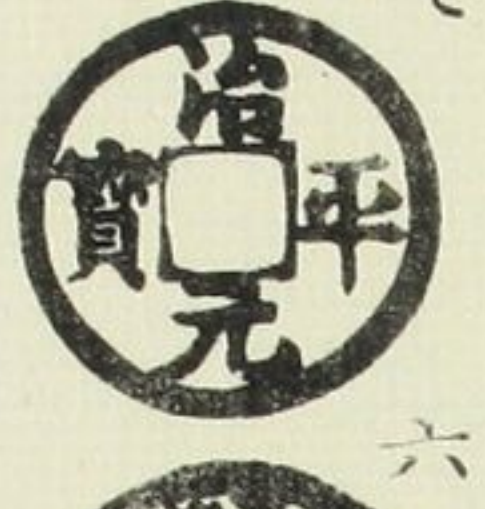
背反郭



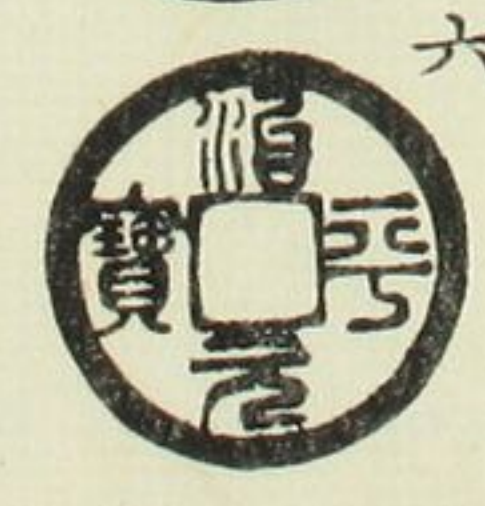
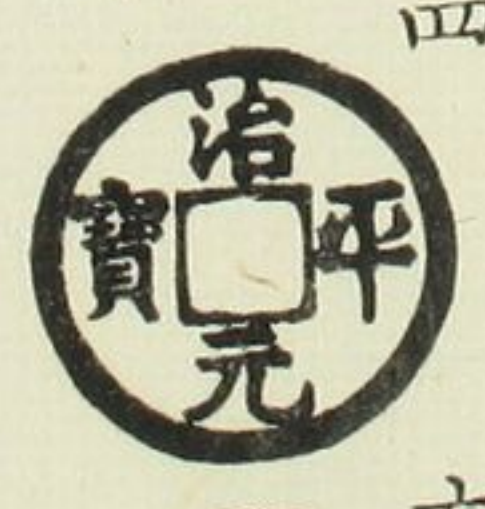
小字



細緣



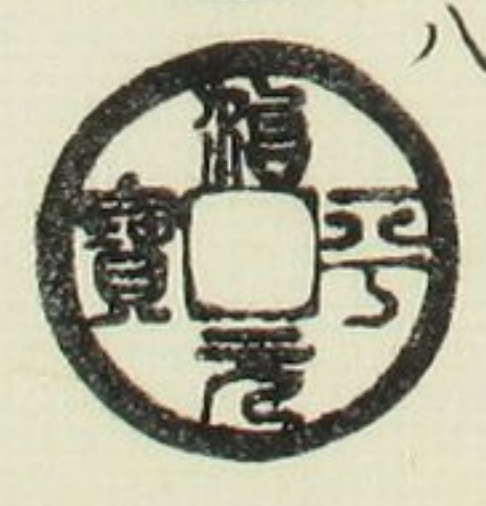
同元上



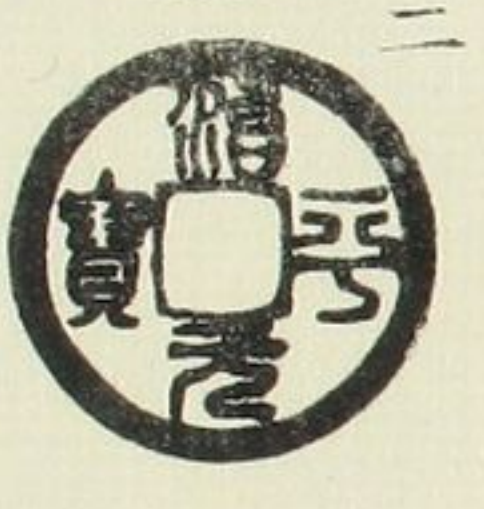
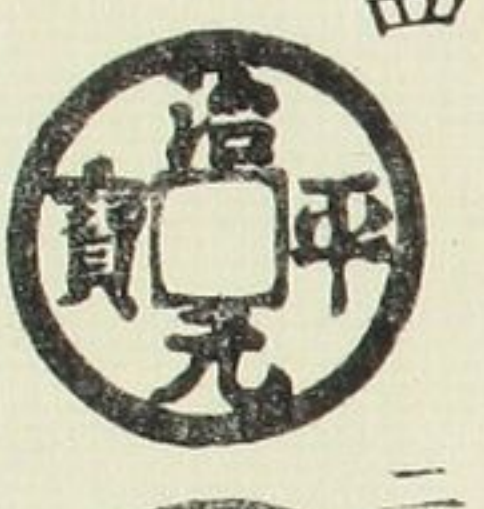
同寶上



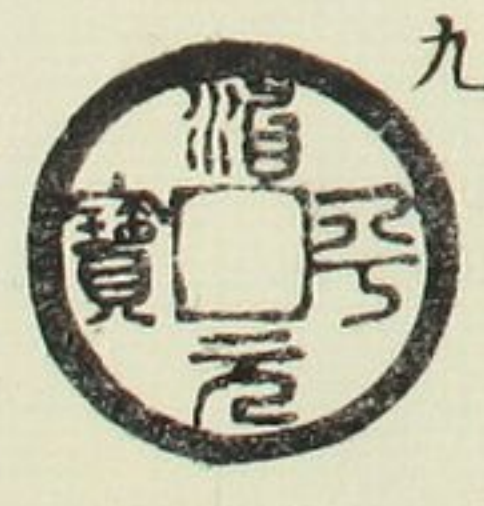
同寶上



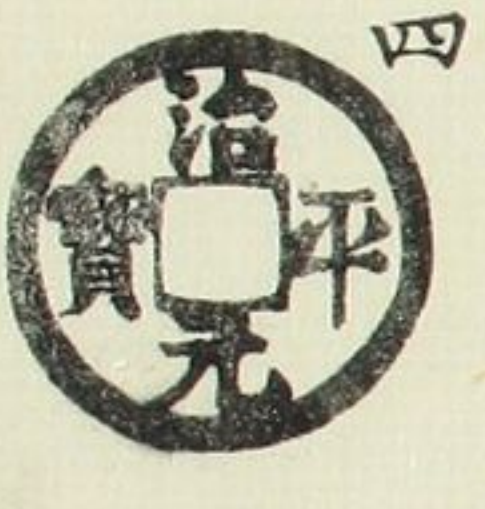
同寶上



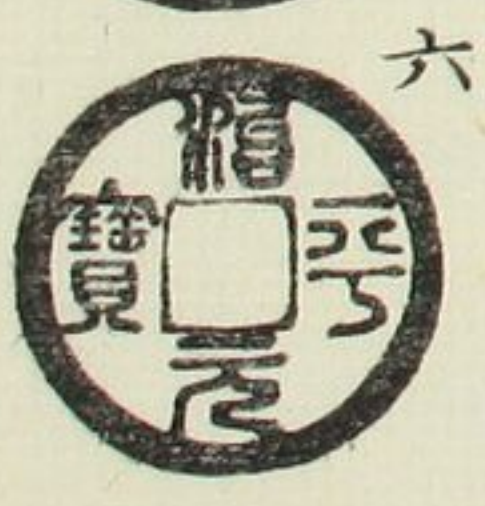
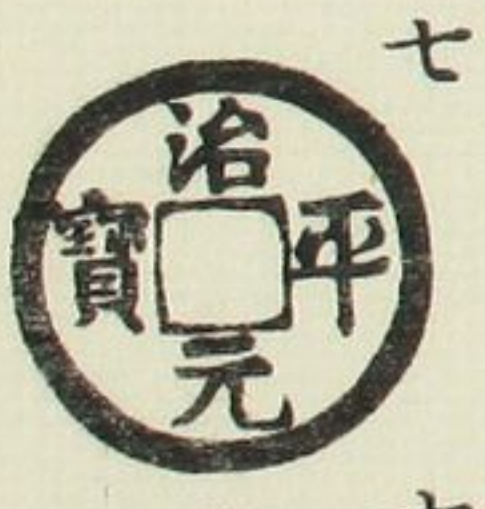
同寶上



降平



昂治



符令錄

二編

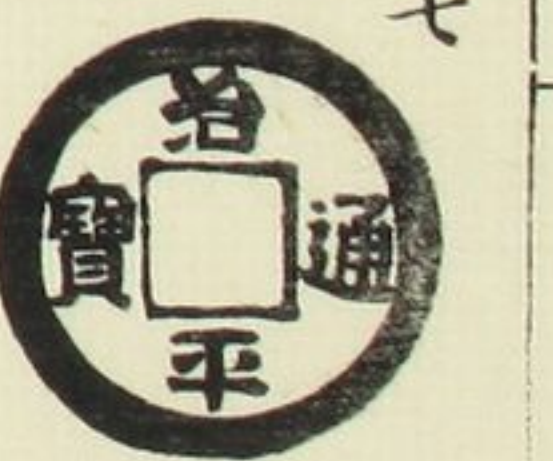
五



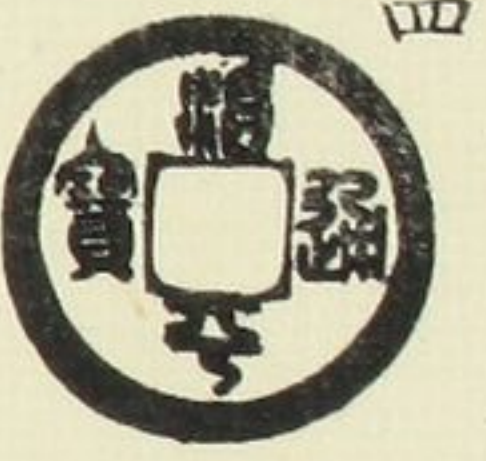
治平通寶  
小通  
退治



同治  
進治



厚肉  
昂寶



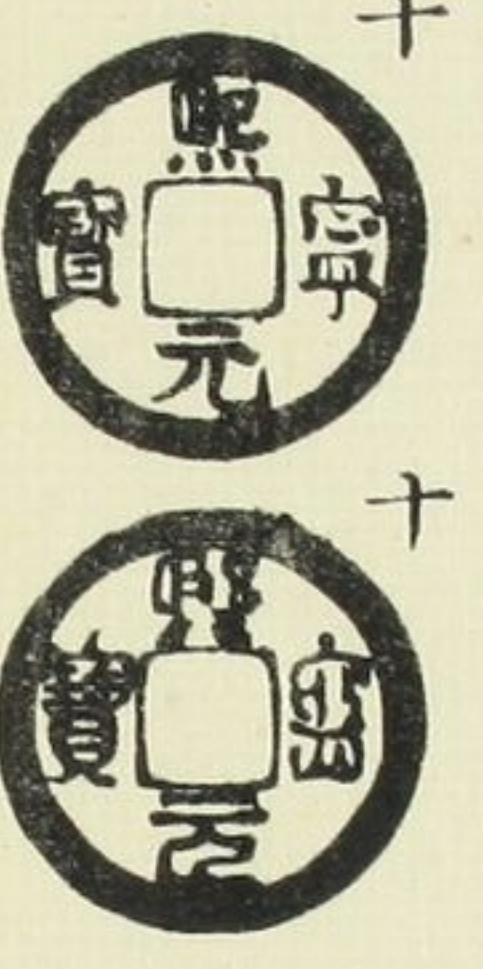
熙寧元寶  
細緣  
大字



離元



背四出  
寶連輪



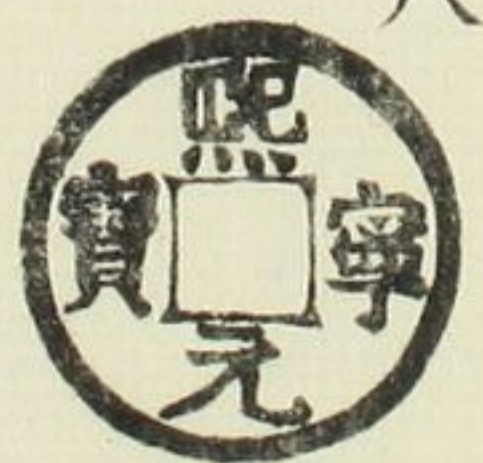
小樣



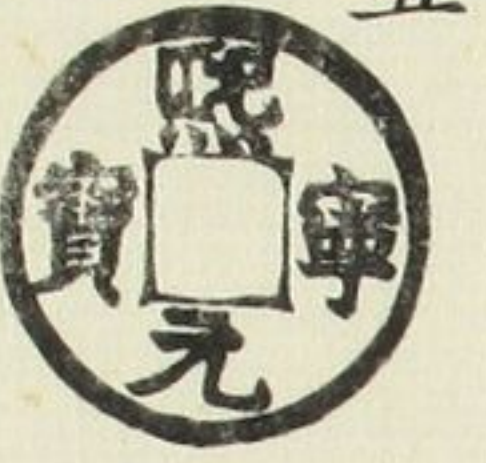
決文  
斜寶



同昂  
上寶



同上  
右元



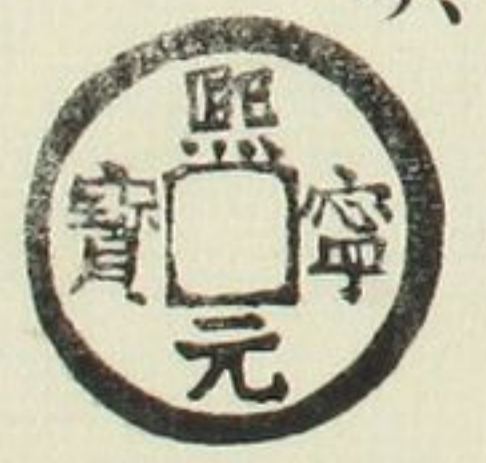
同上  
左元



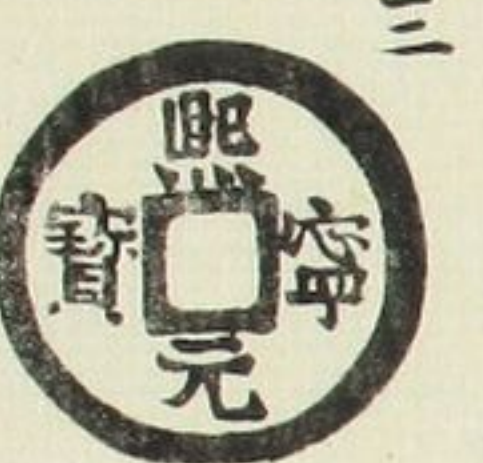
同上  
右仰元



離足



同上  
肥郭



濶字



符命錄

二編

六



濶字  
楷元



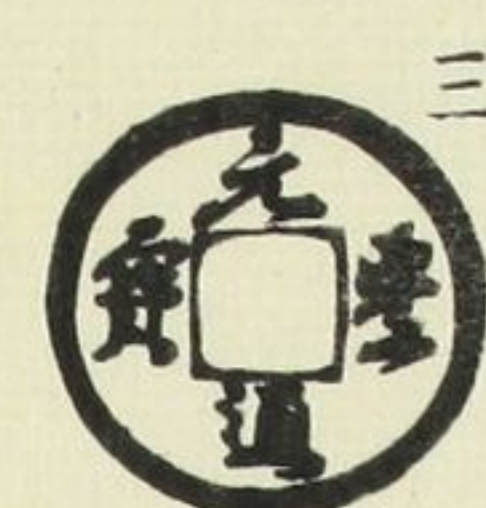
縮字



元豐通寶  
四出  
小字



廣郭  
肥元



正郭  
濶緣



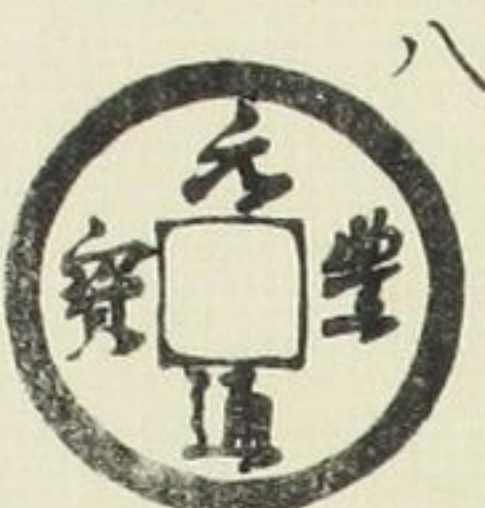
廣郭  
降元



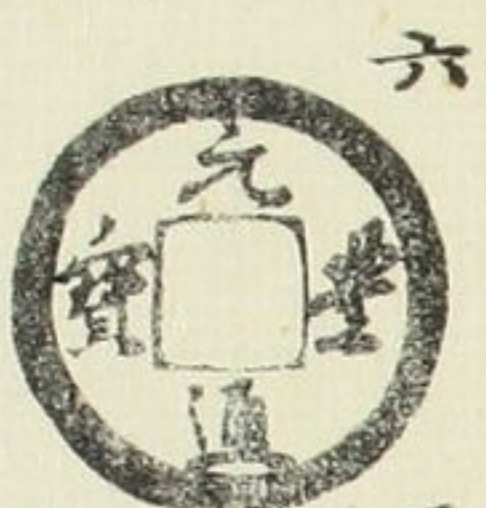
正郭  
右元



兀字  
昂元



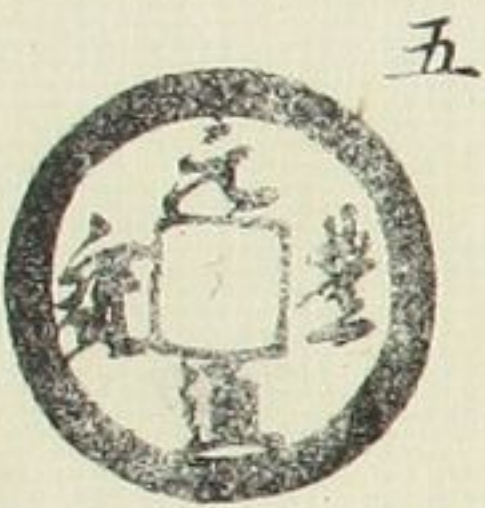
背濶緣  
廣穿



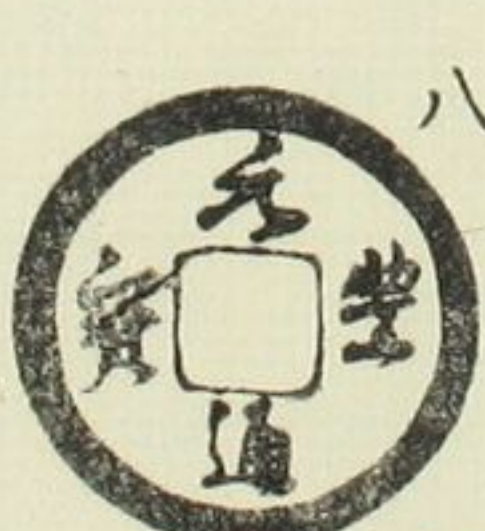
狹穿  
廣郭  
背濶



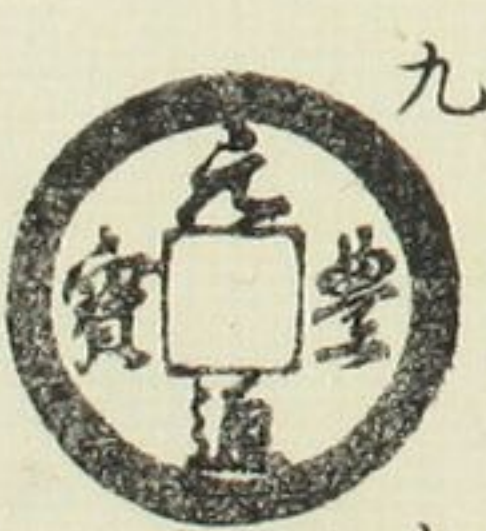
同上  
降寶



同上  
仰元



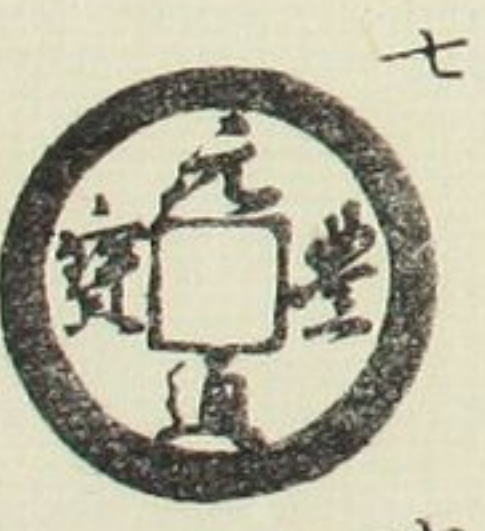
無背  
小異



同上  
廣穿



同上  
昂寶



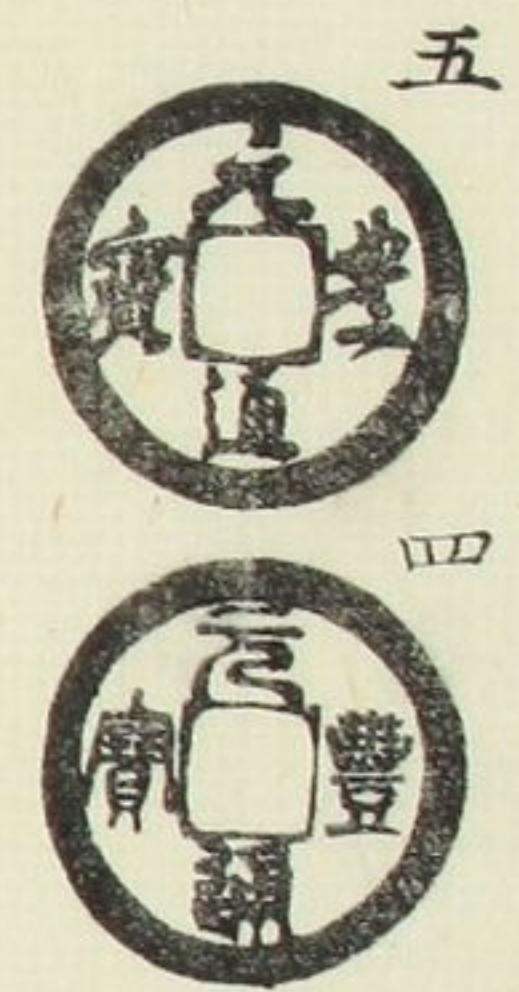
錢幣圖考

二編

六



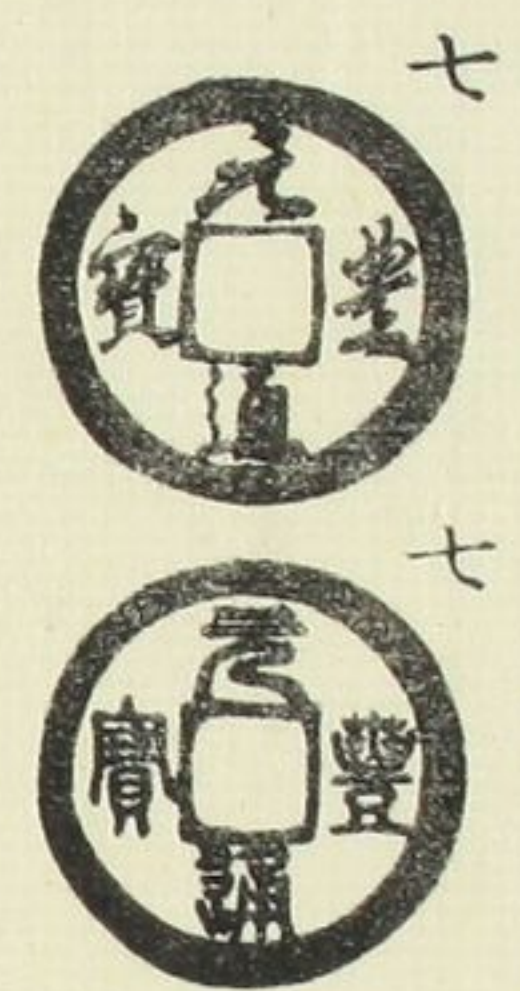
仰同  
寶上



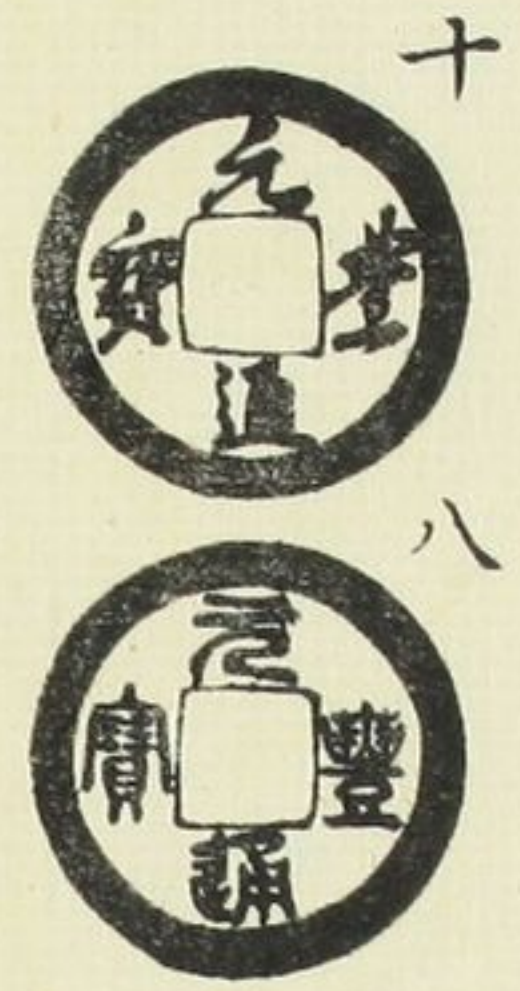
俯同  
寶上



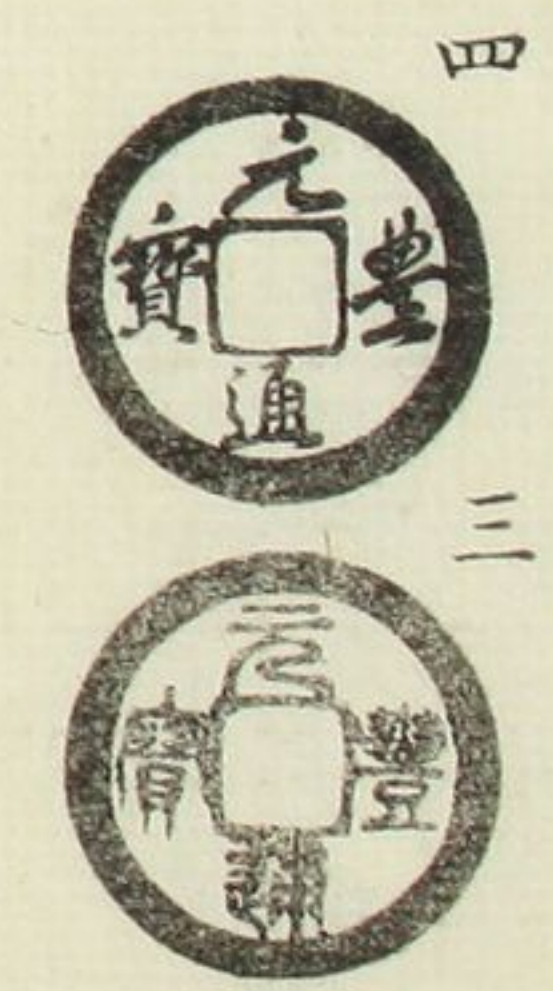
俯寶  
豐連輪



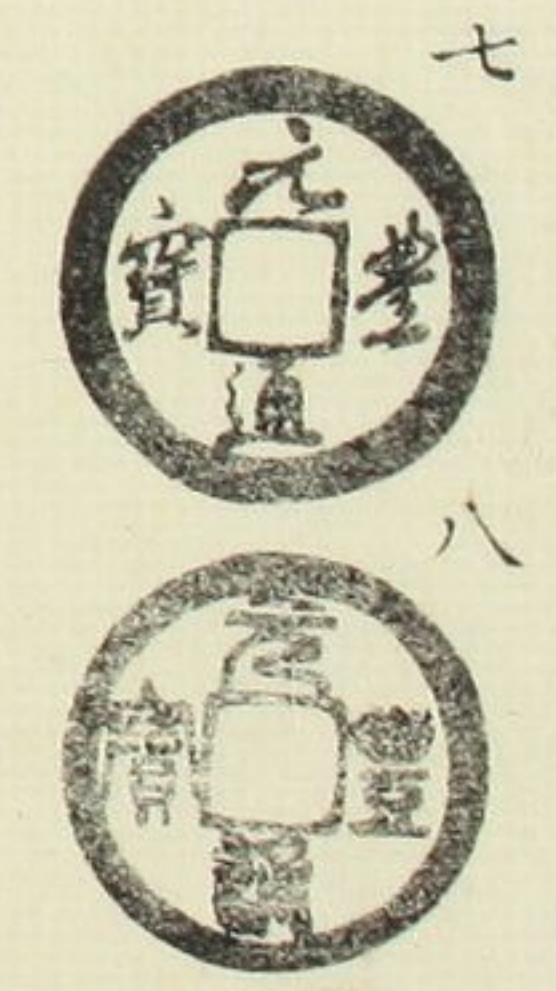
廣穿  
降豐



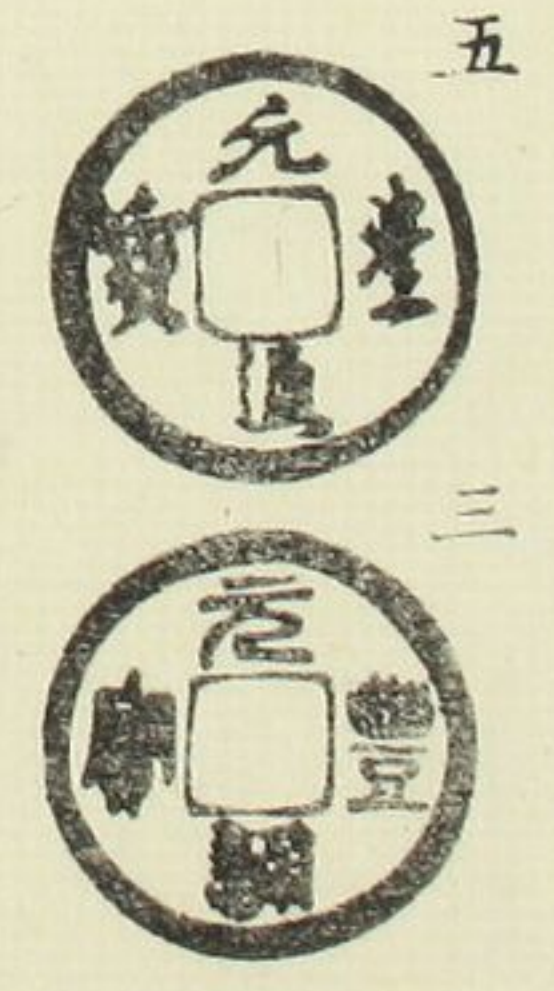
進仰  
通寶



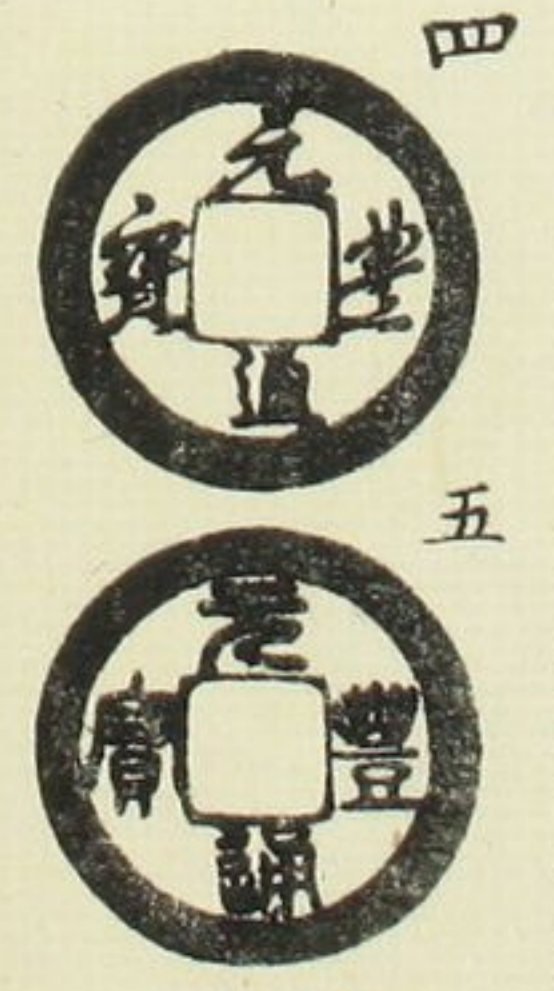
進俯  
通寶



含圓郭



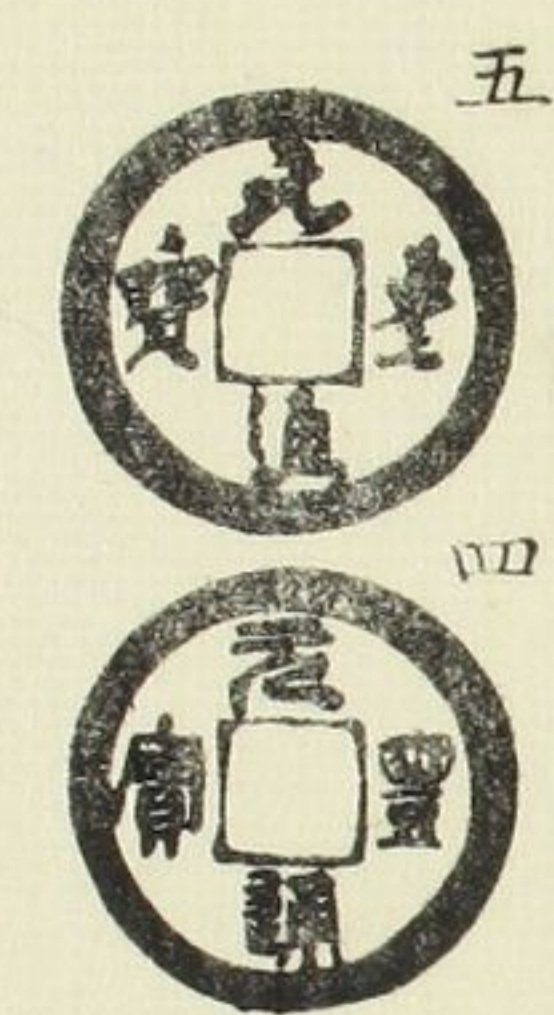
同退  
上通



狹豐  
昂通



同長  
上通



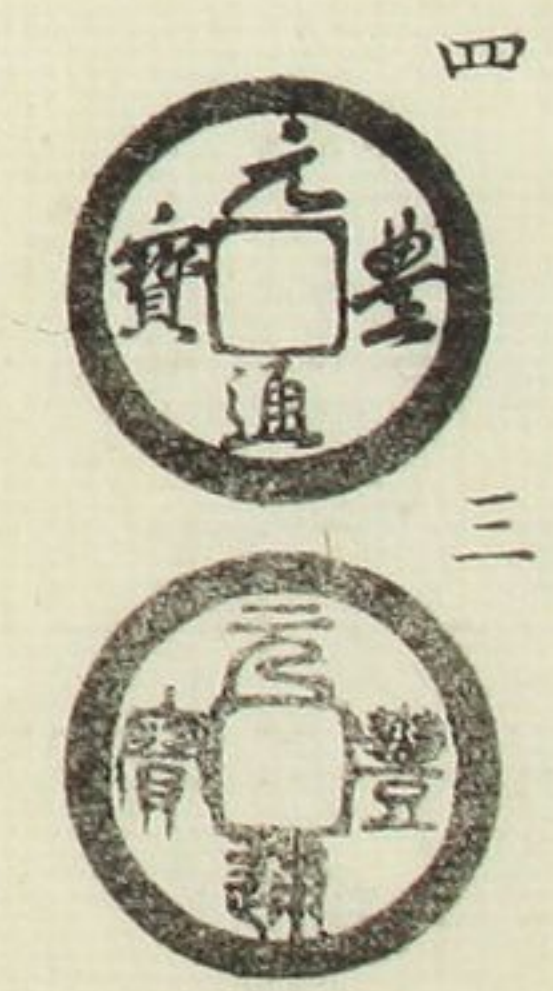
濶緣  
背異



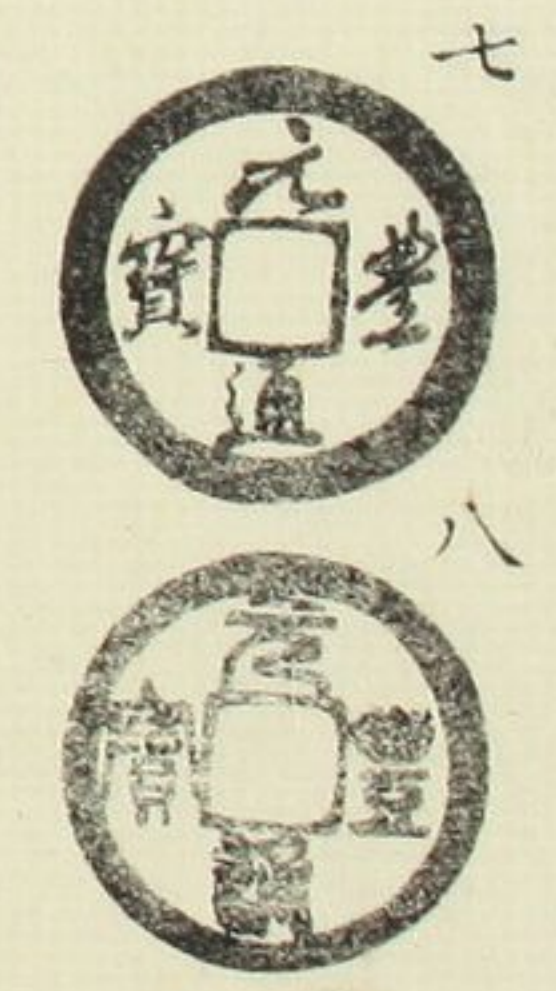
濶緣  
異字



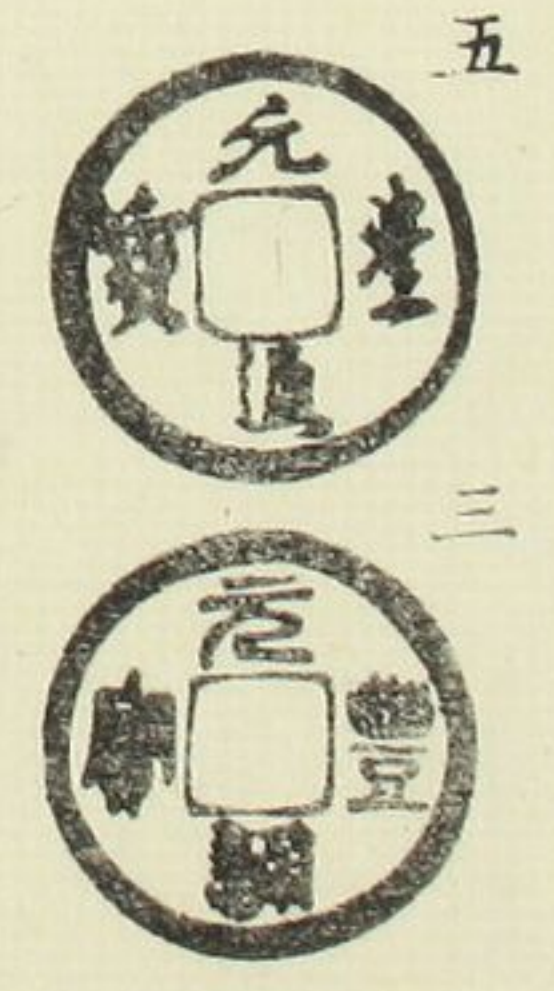
進仰  
通寶



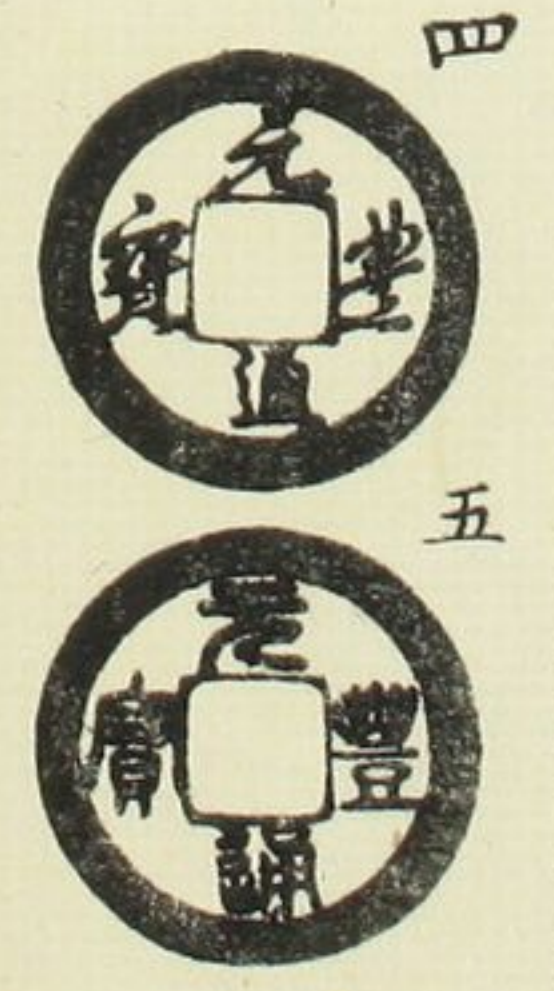
進俯  
通寶



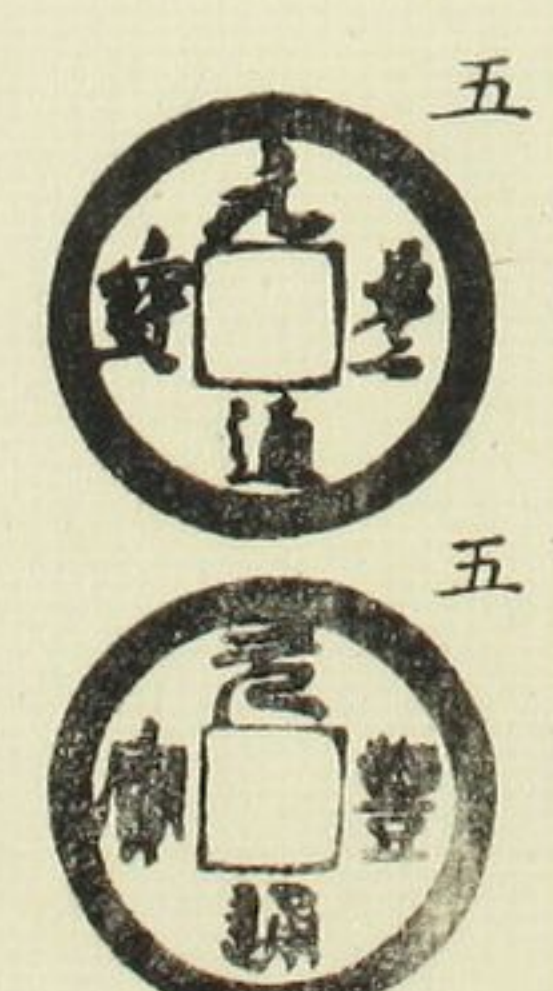
含圓郭



同退  
上通



同降  
上通



濶緣  
圓冠



同中  
上字



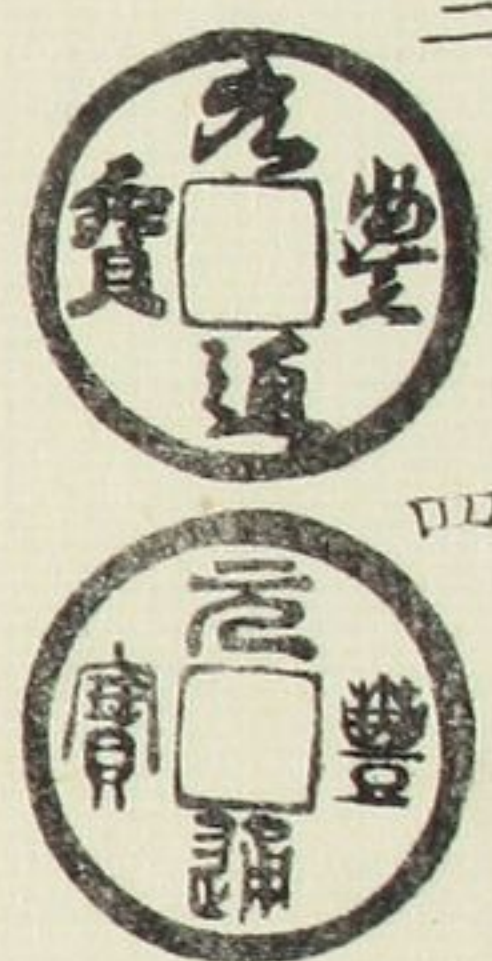
長豐  
接郭



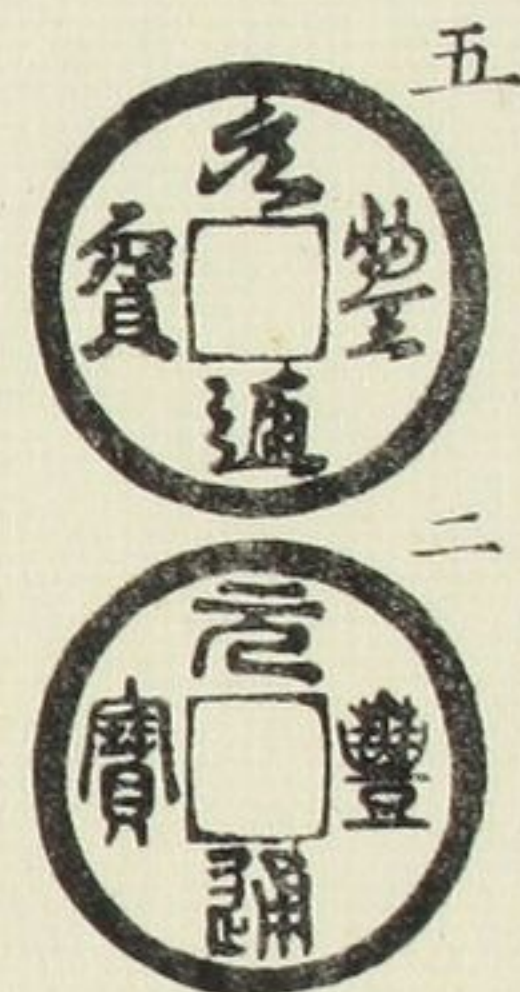


肥元之部

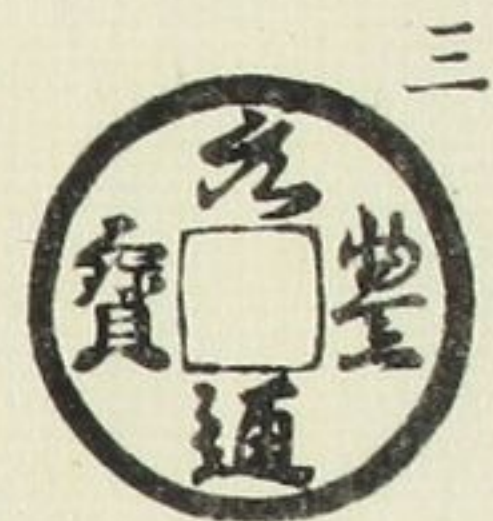
俯元



仰元



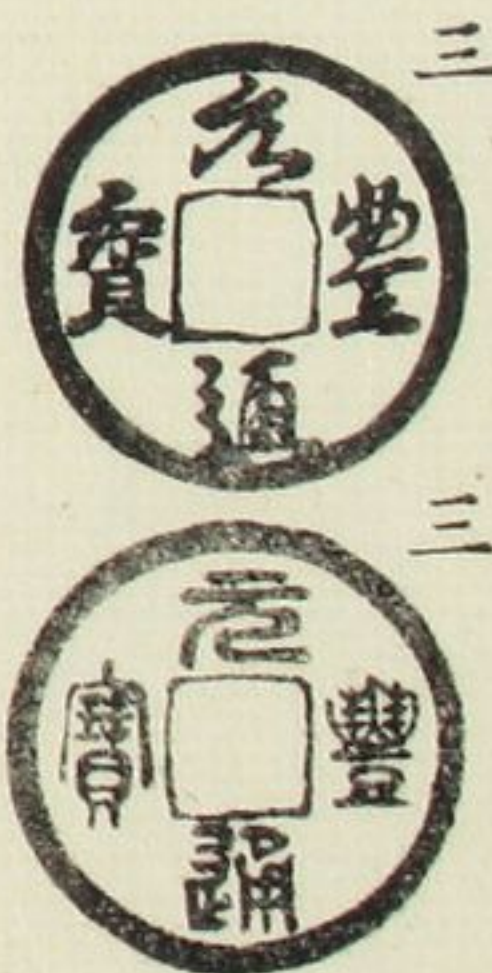
進俯通元



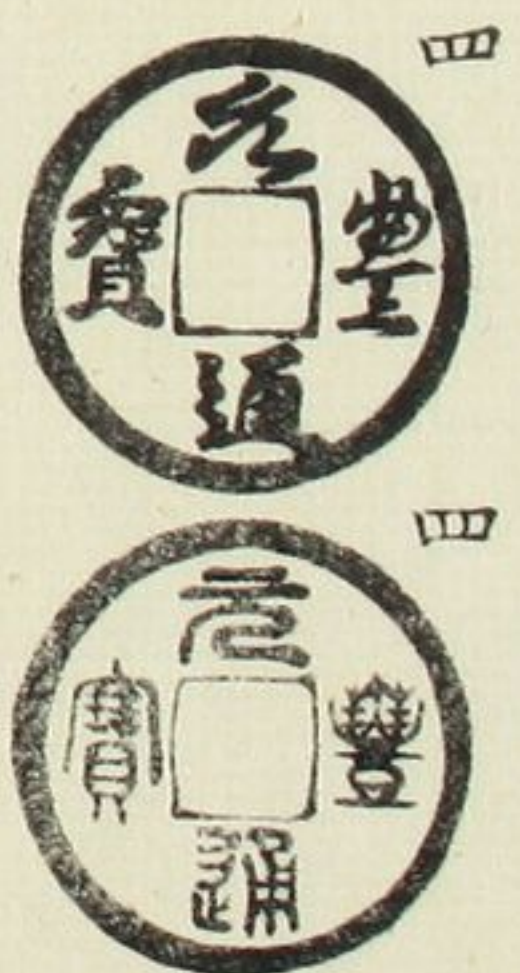
退俯通豐



俯左元



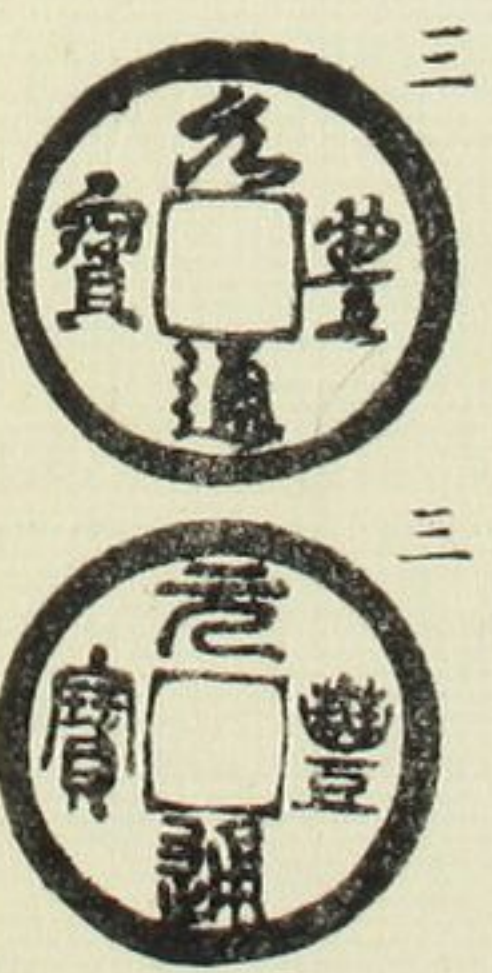
退通



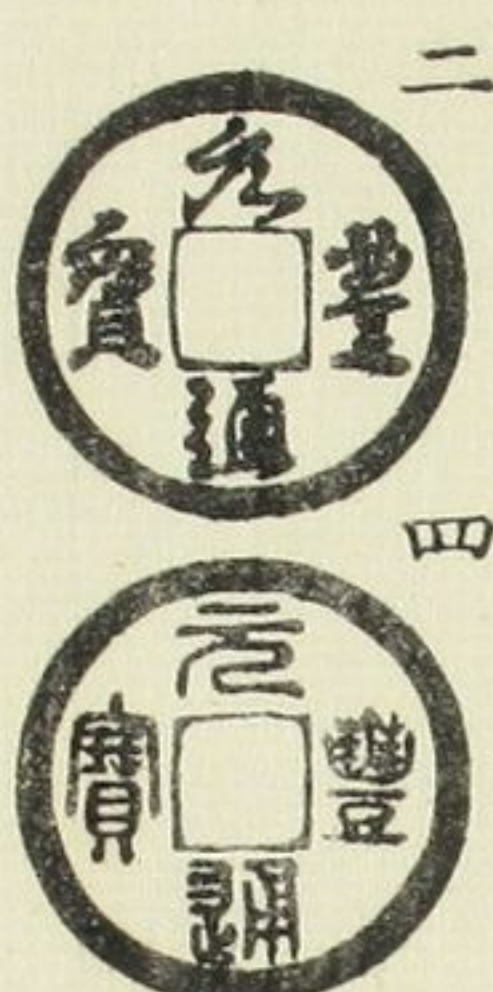
進仰通元



背潤緣



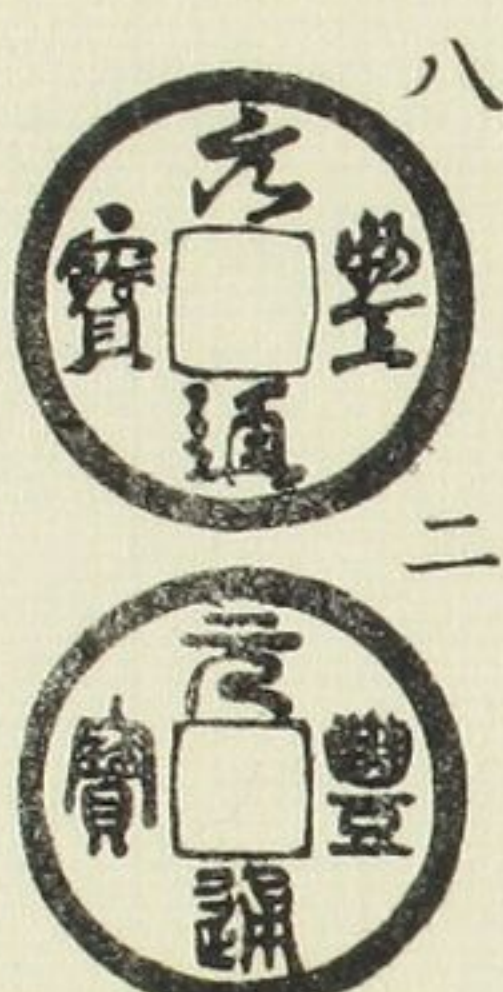
同大上樣



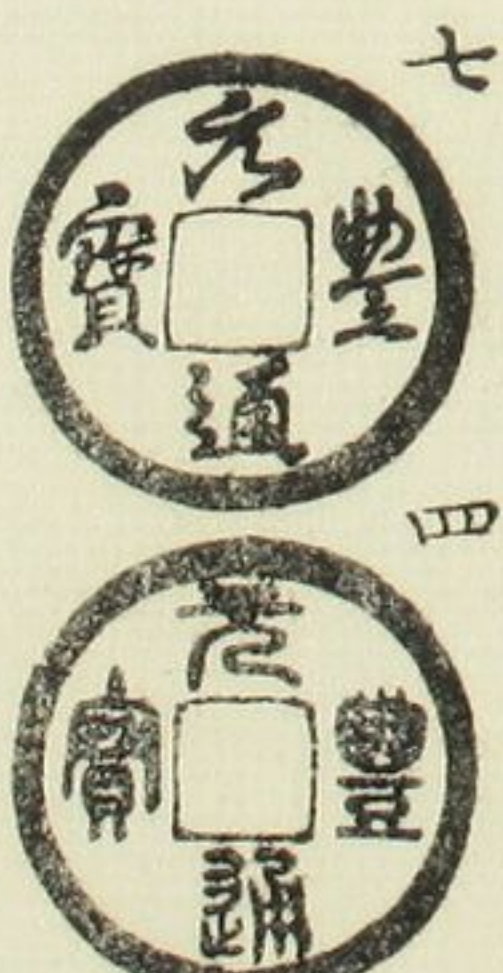
仰空



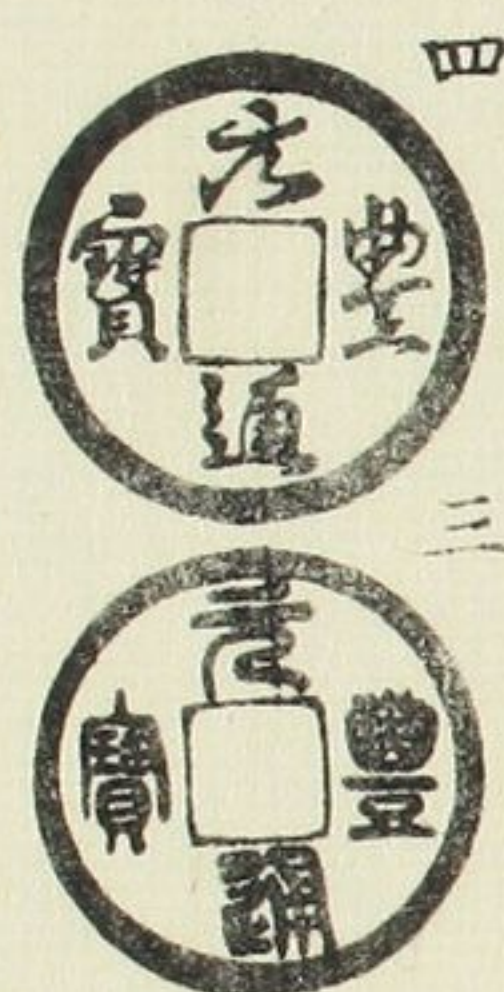
大頭通之部  
正樣直元



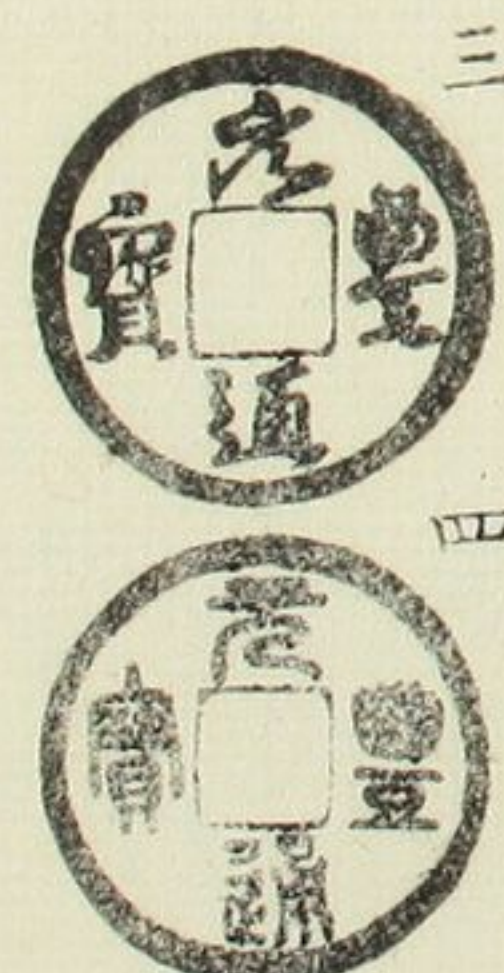
同右元上



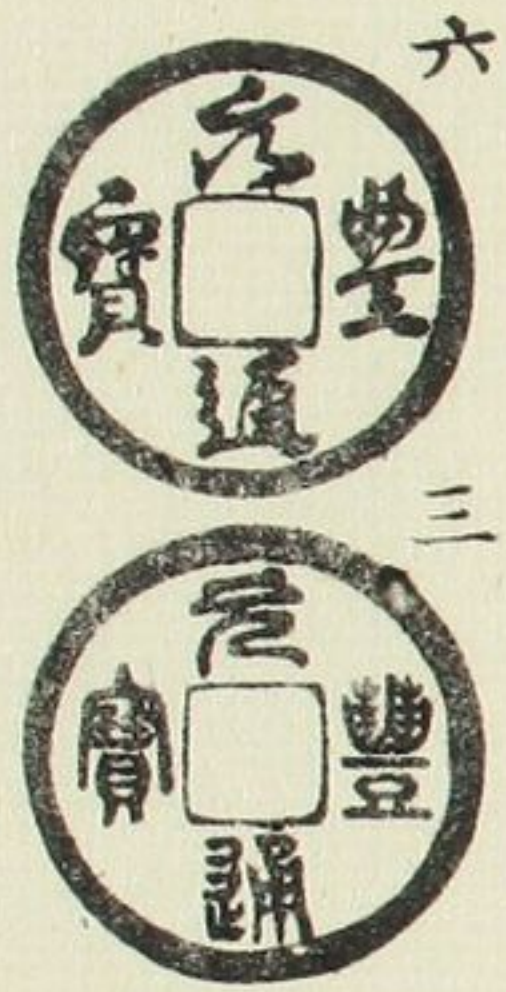
正樣直豐



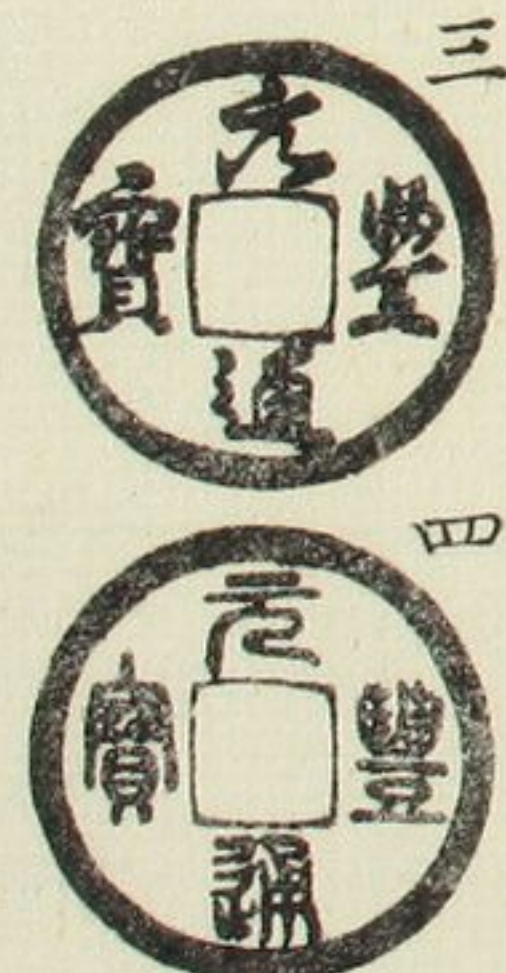
同斜豐上



俯元

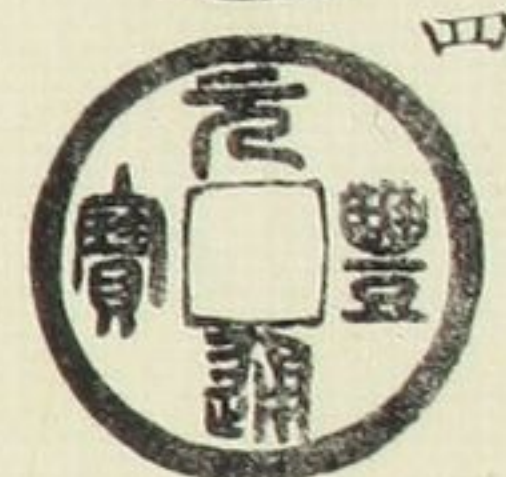


俯斜豐元

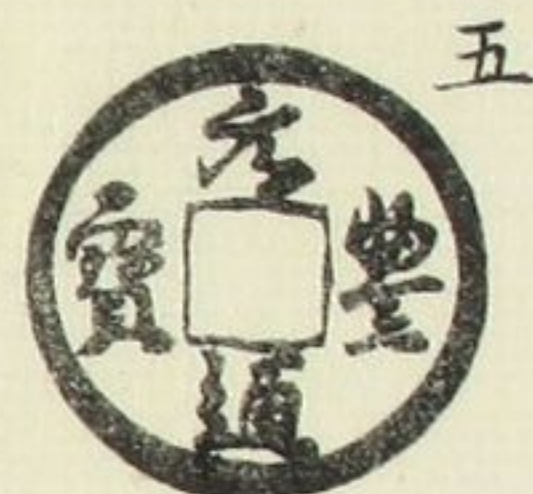




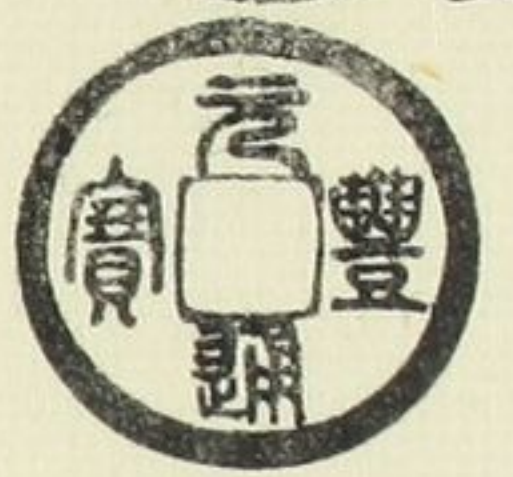
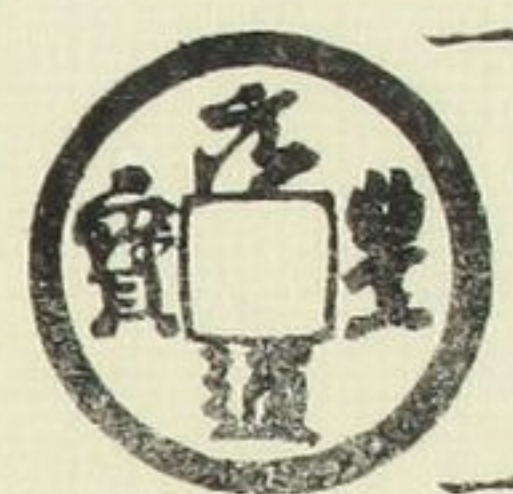
右元  
降寶



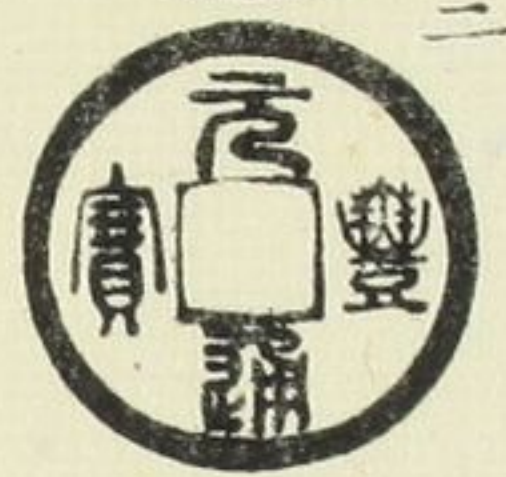
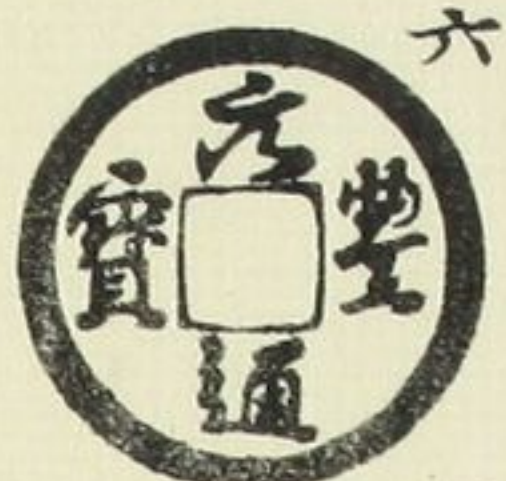
同上  
俯寶



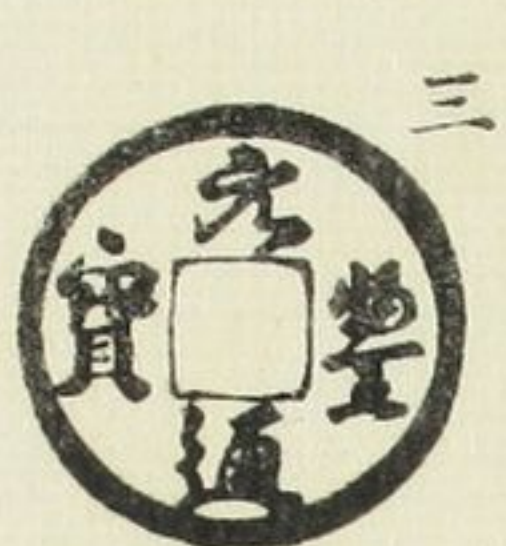
郭  
接郭



昂豐



降豐



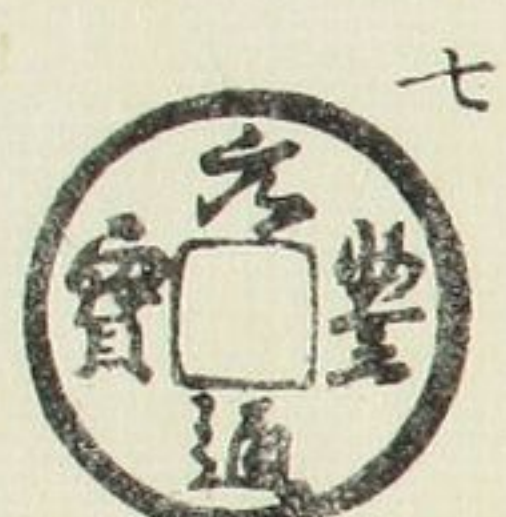
廣穿



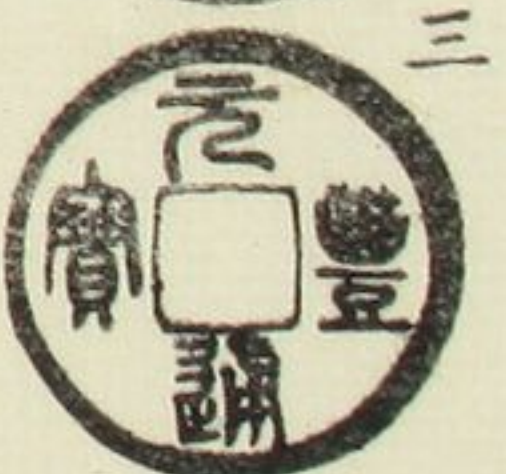
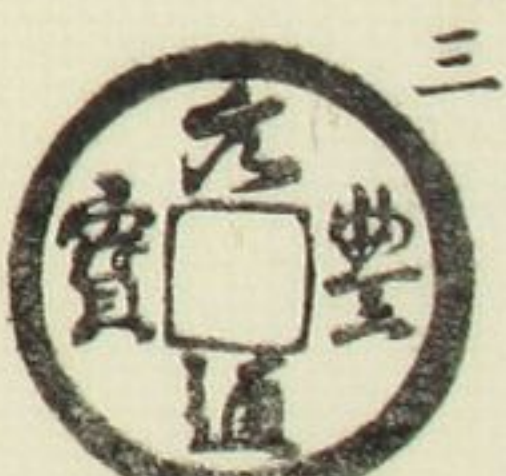
同上  
長寶



橫點寶之部  
昂元  
直豐



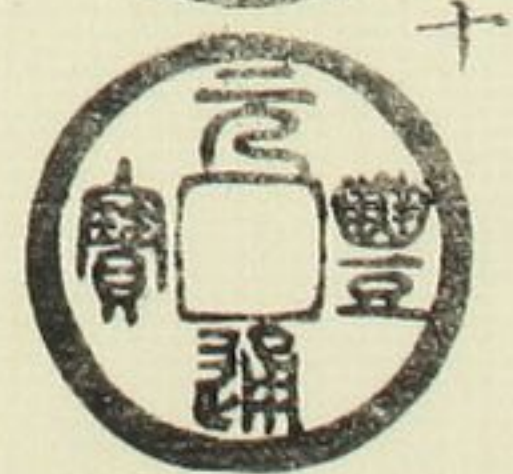
同上  
進通



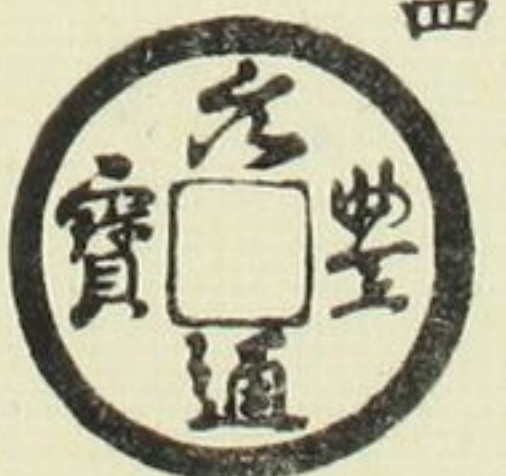
仰元



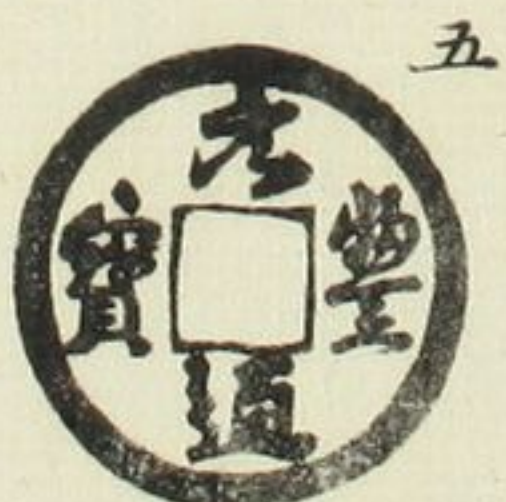
郭  
瘦郭



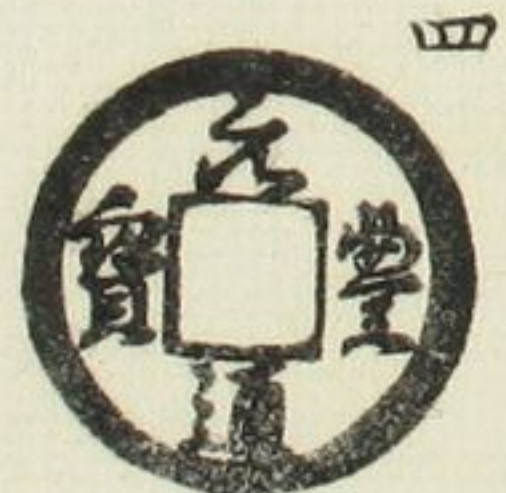
昂豐  
進通



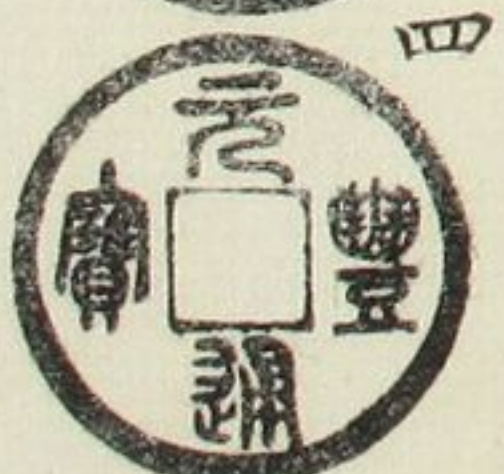
仰點



同上  
背陰起

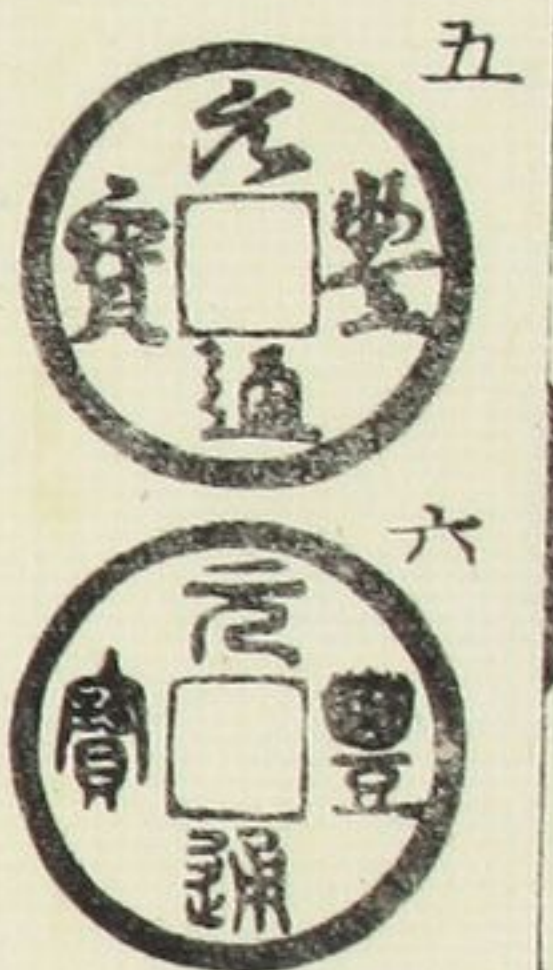


昂元  
降寶

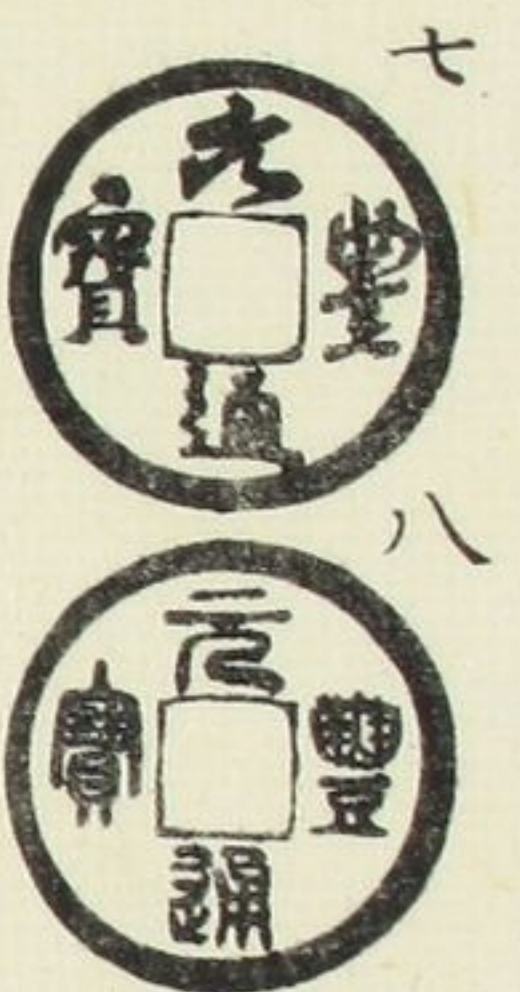




昂元  
斜豐



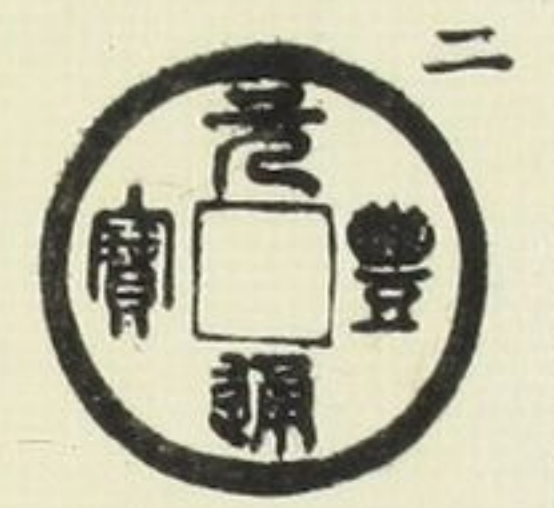
直元



豐連輪



昂元  
小字

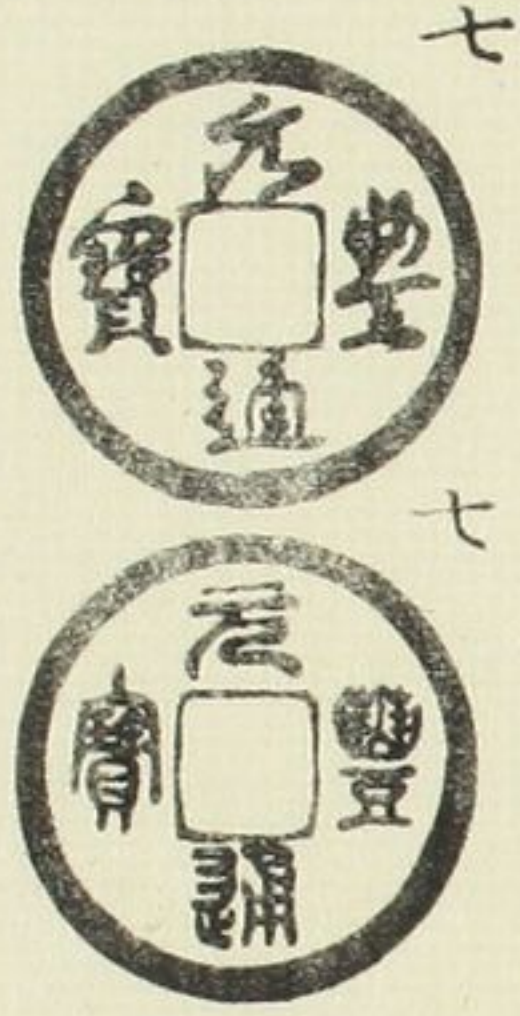


同上  
進通

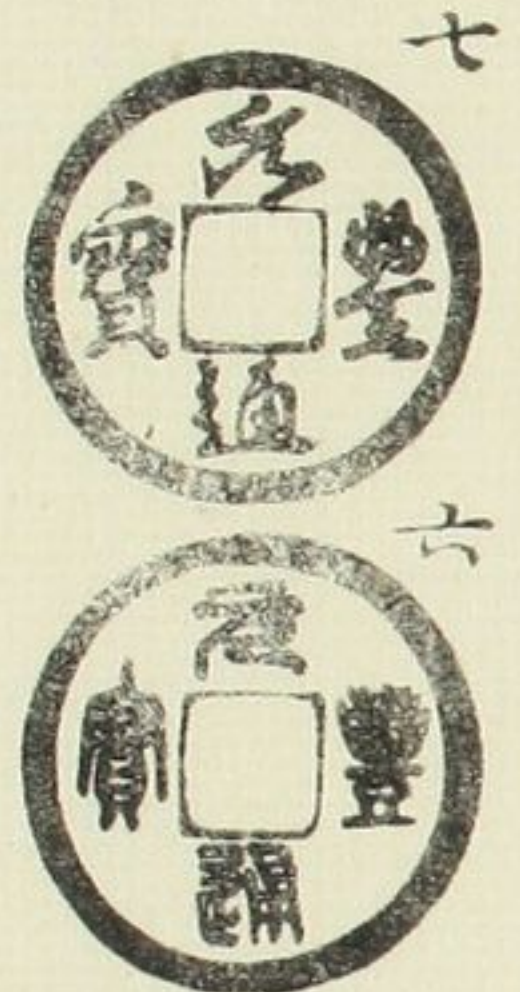


正樣  
俯元

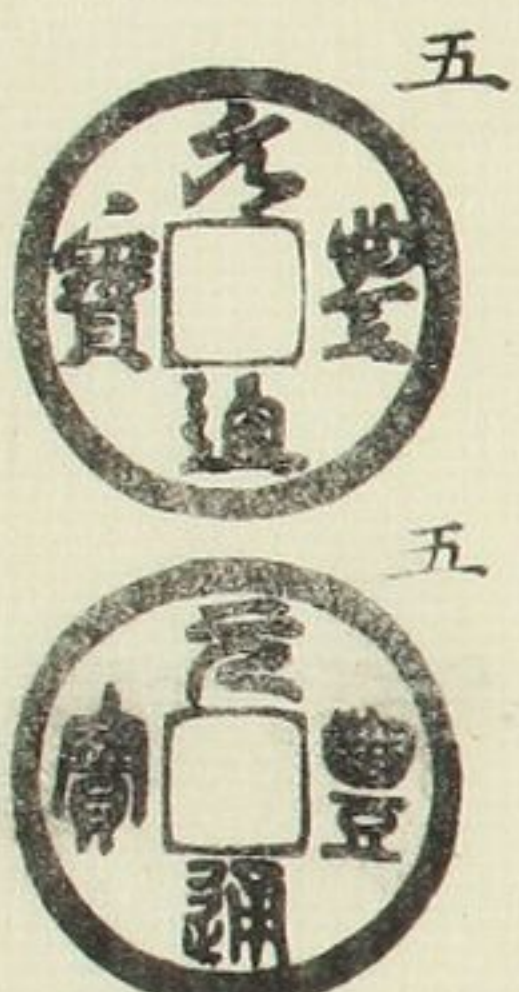
緩点室之部



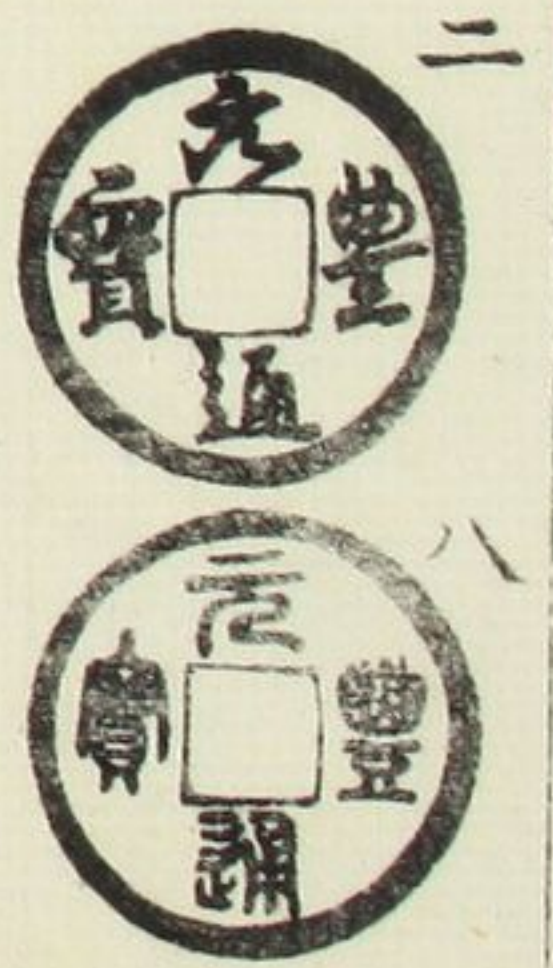
俯元  
進通



斜豐



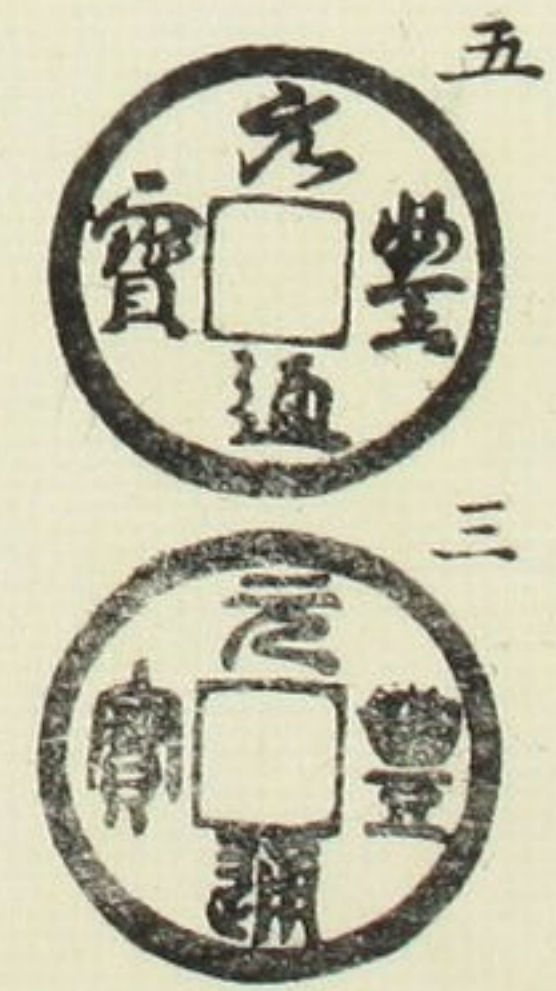
俯元



降豐寶



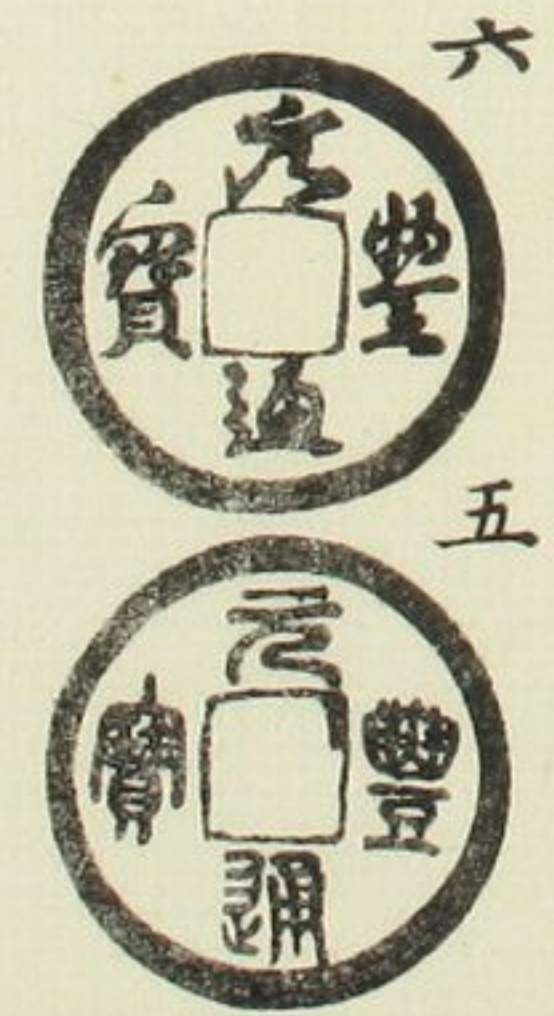
同上  
左元



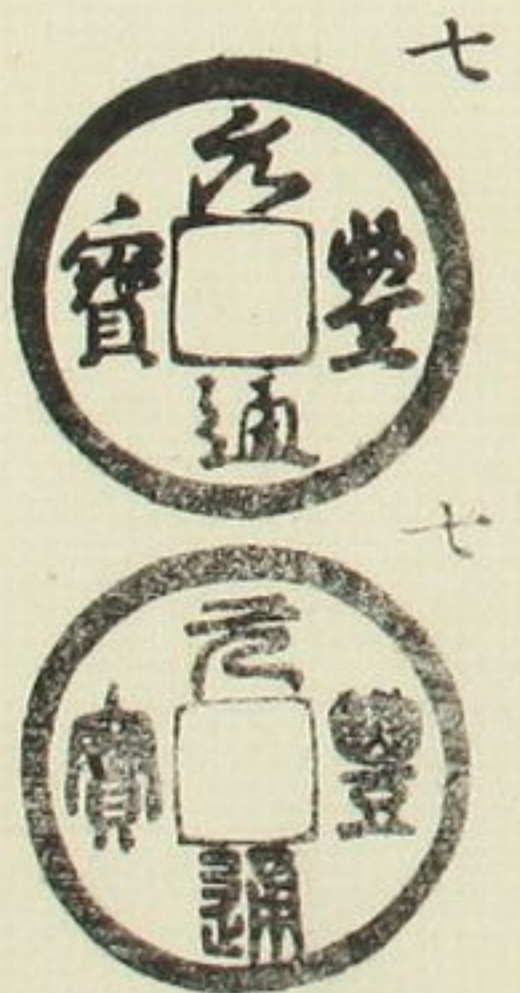
同上  
退通



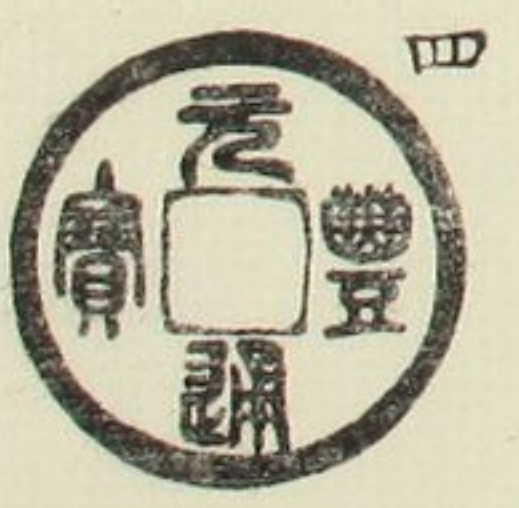
同上  
左元



同上  
退通

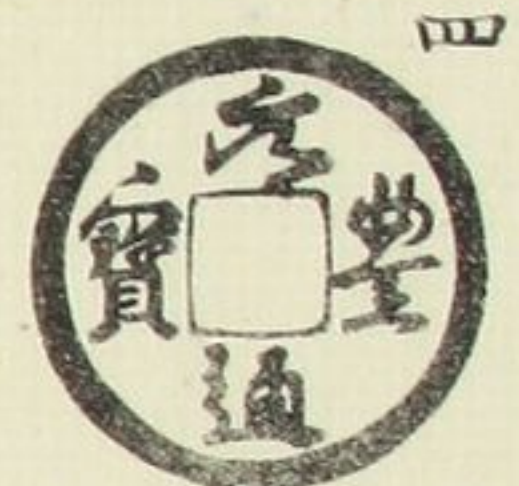


降元

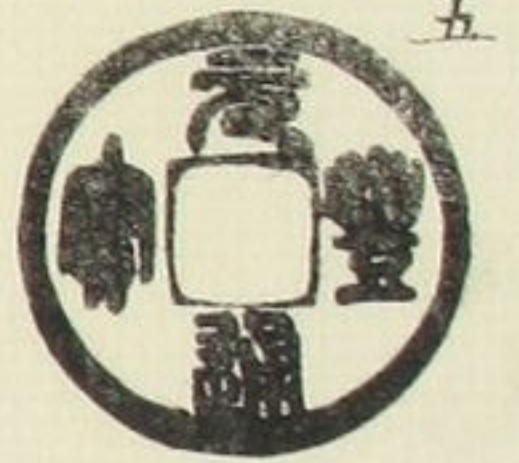




仰元

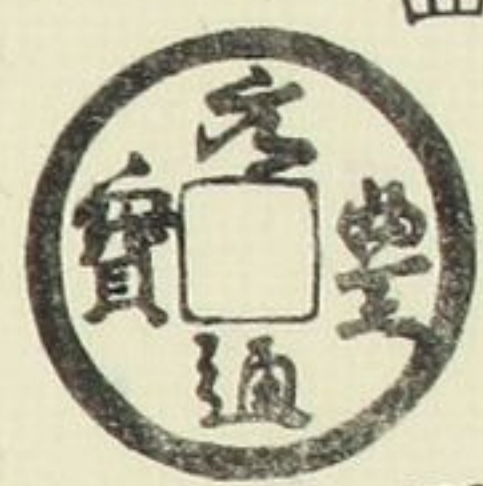


四

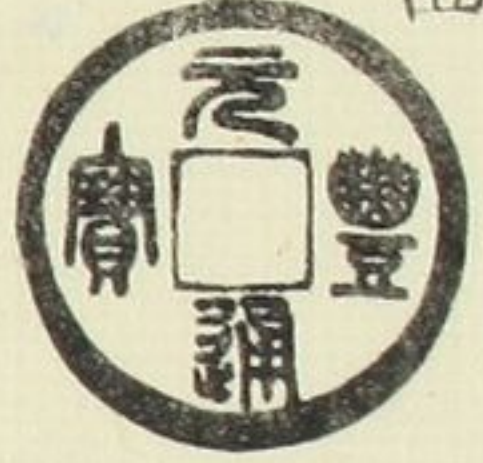


五

仰元  
降豐

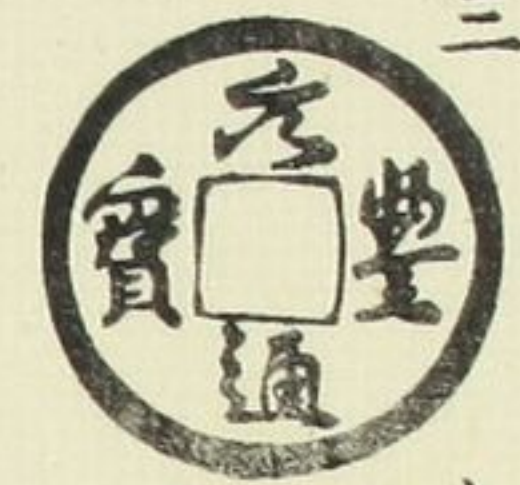


四

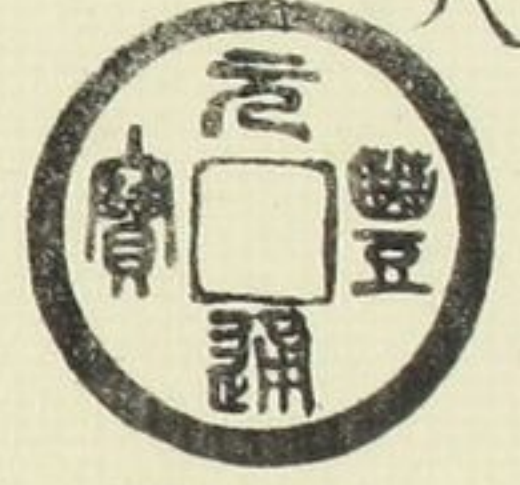


四

昂斜元



三



八

小字



六

小字  
昂通



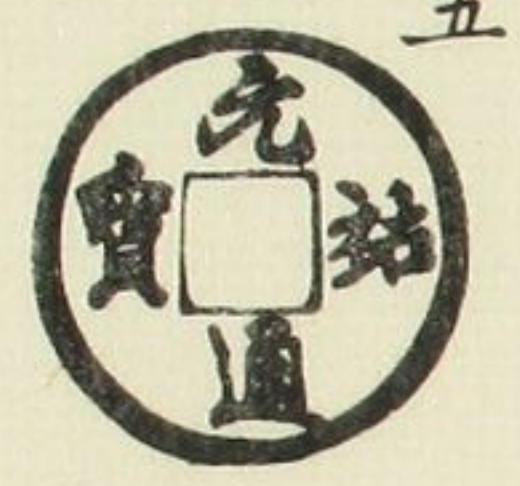
四

元祐通寶  
大樣  
昂寶



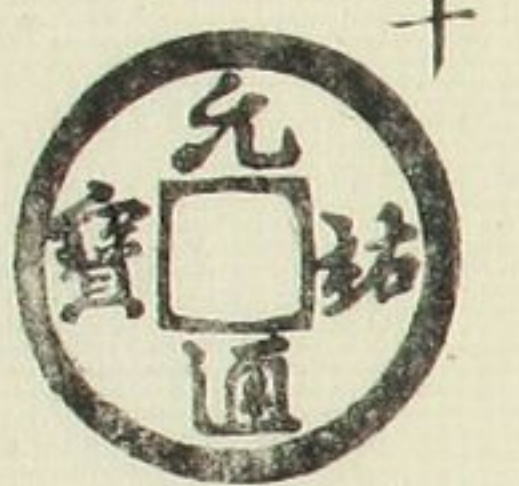
八

降祐  
小異



五

廣穿  
小異

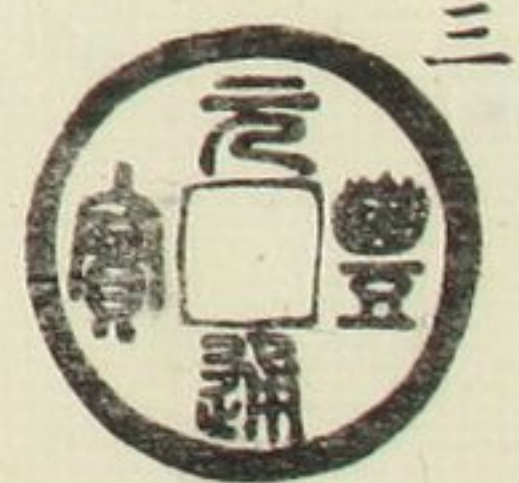


十



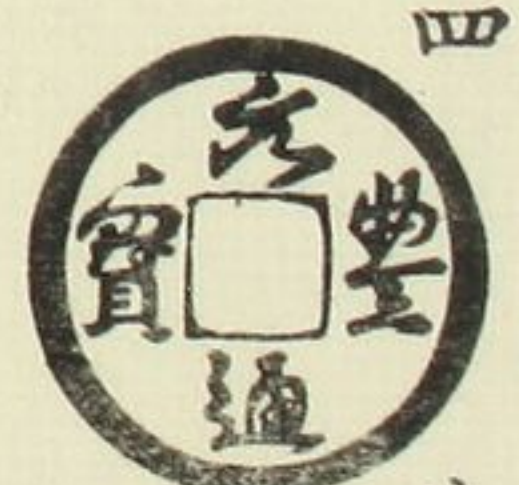
十

降寶

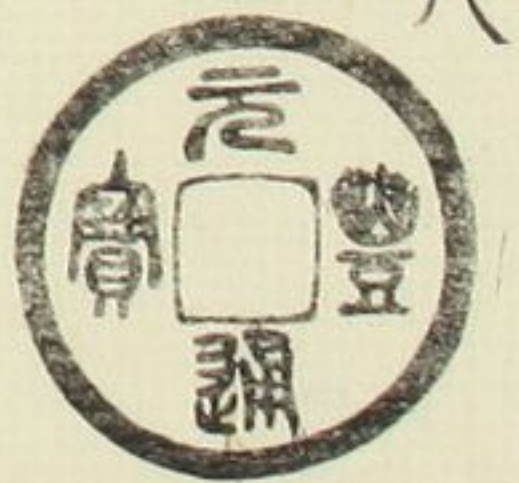


三

昂直元



四

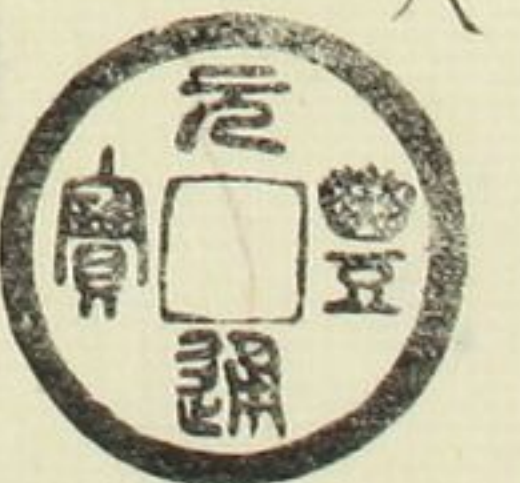


八

昂仰元



三



八

小字  
斜豐



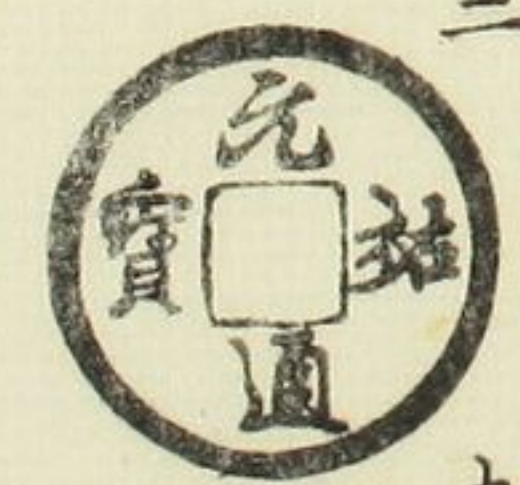
五

小字  
昂豐

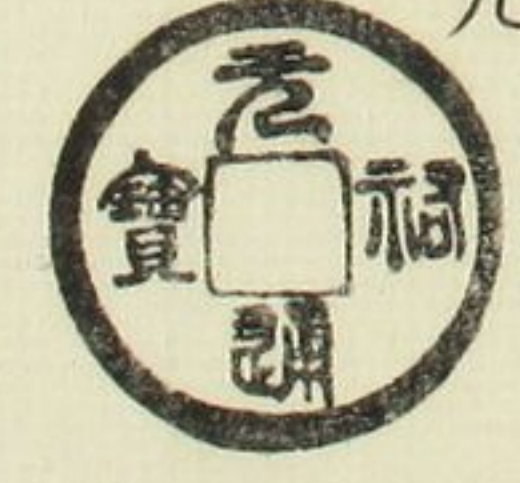


六

右元  
昂祐



二



九

祐寄郭

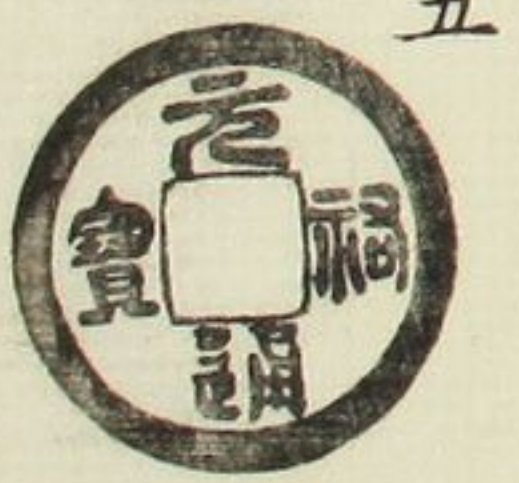


二

細郭  
肥字



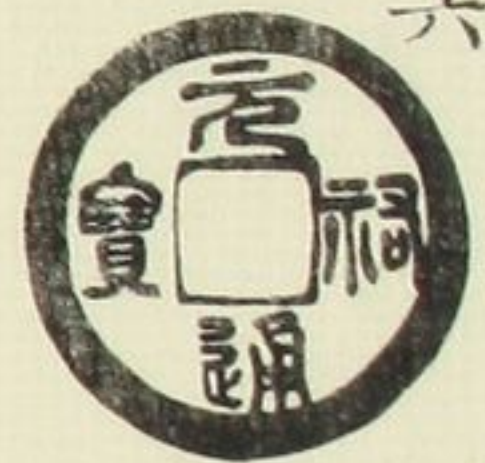
六



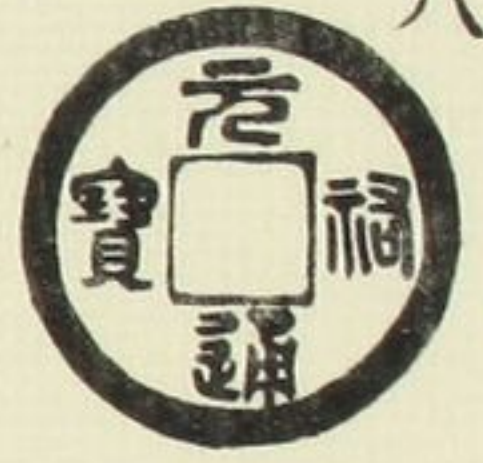
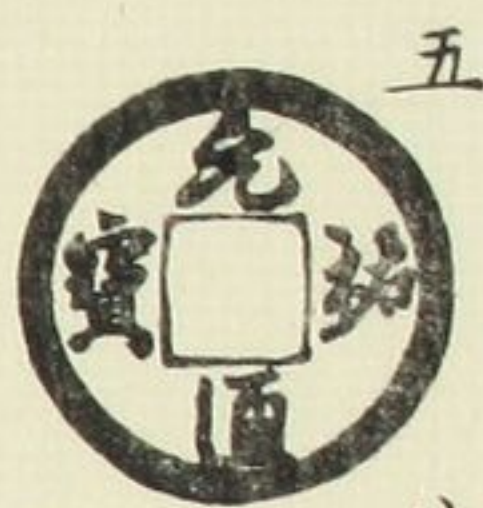
五



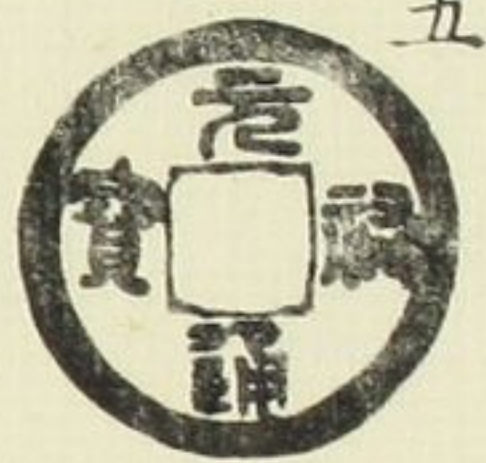
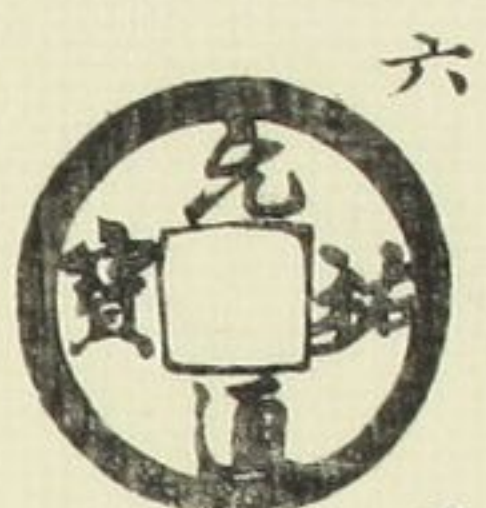
星無背  
大字



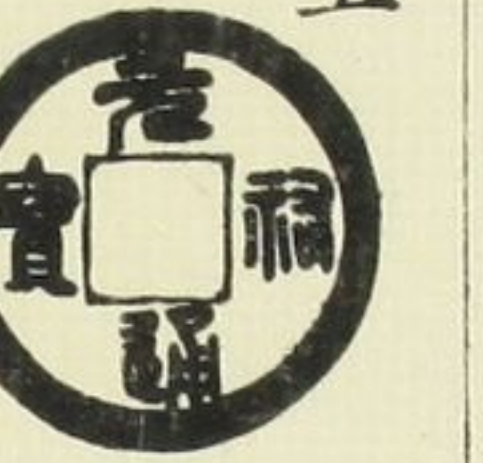
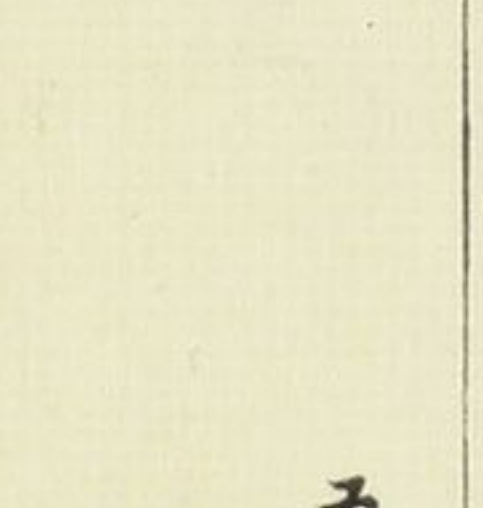
正郭  
仰寶



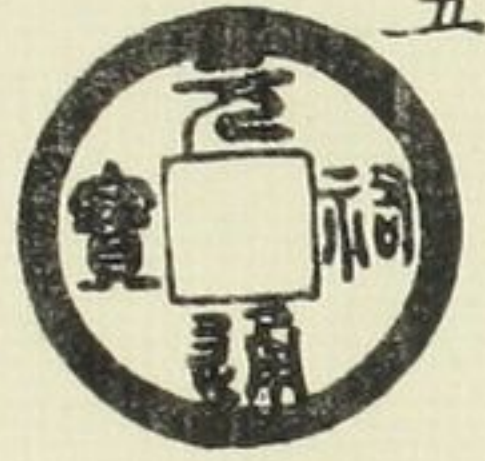
左元  
仰寶



俯元



細郭  
廣穿



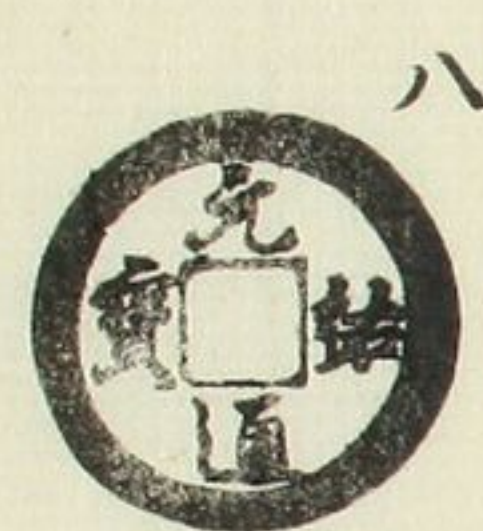
濶字



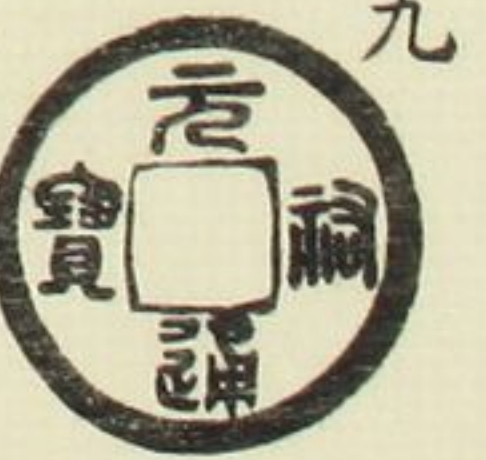
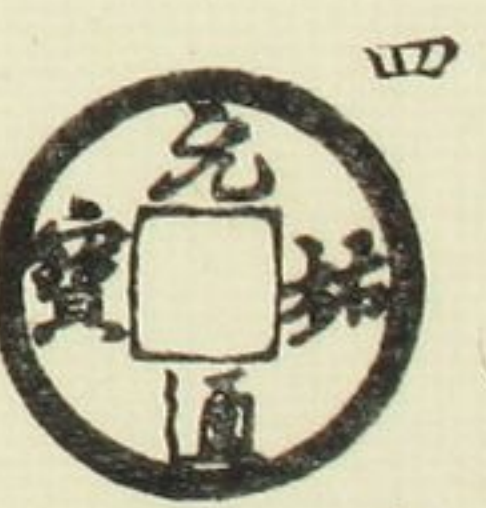
狹穿  
直寶



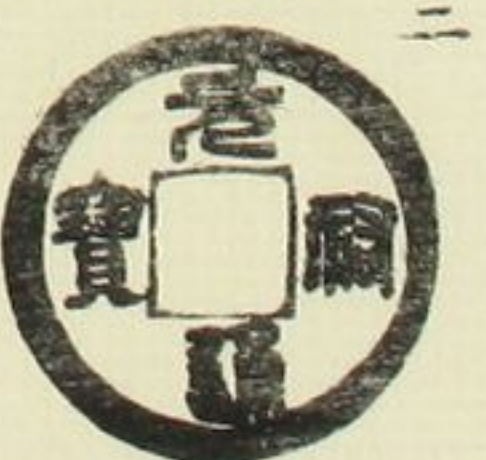
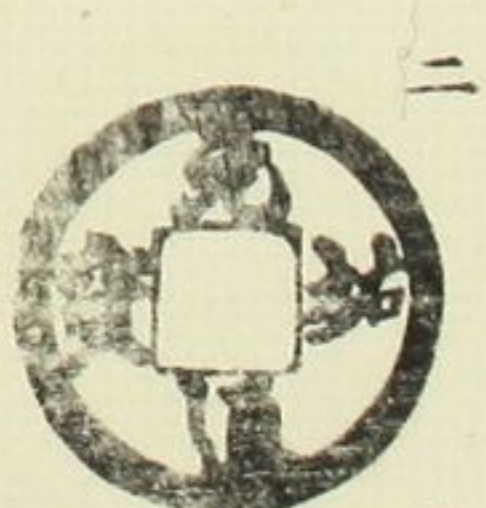
寶寄郭



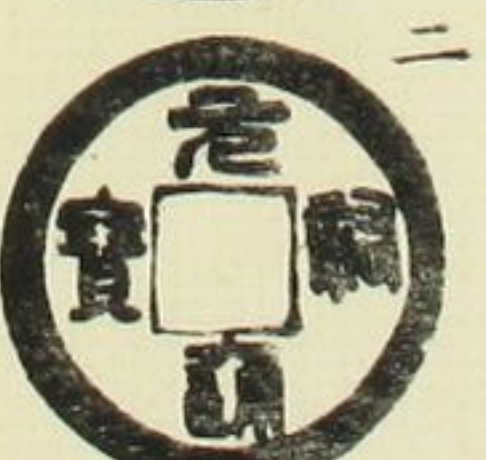
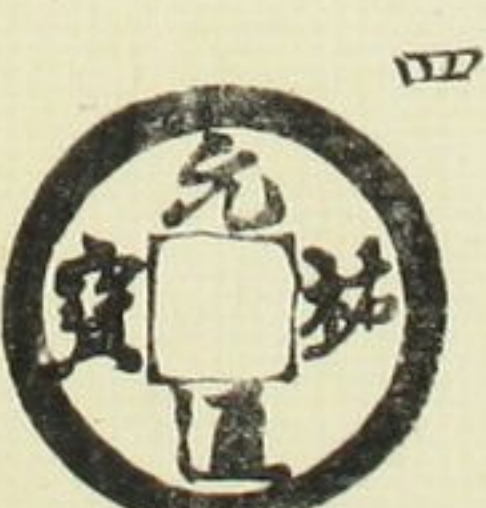
同  
仰肥寶



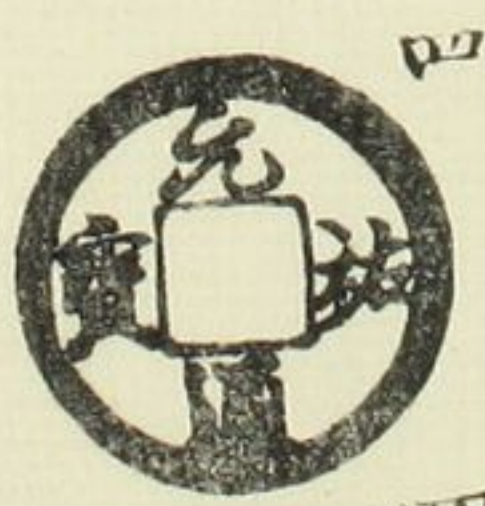
俯通



昂祐



同上  
右元



縮字

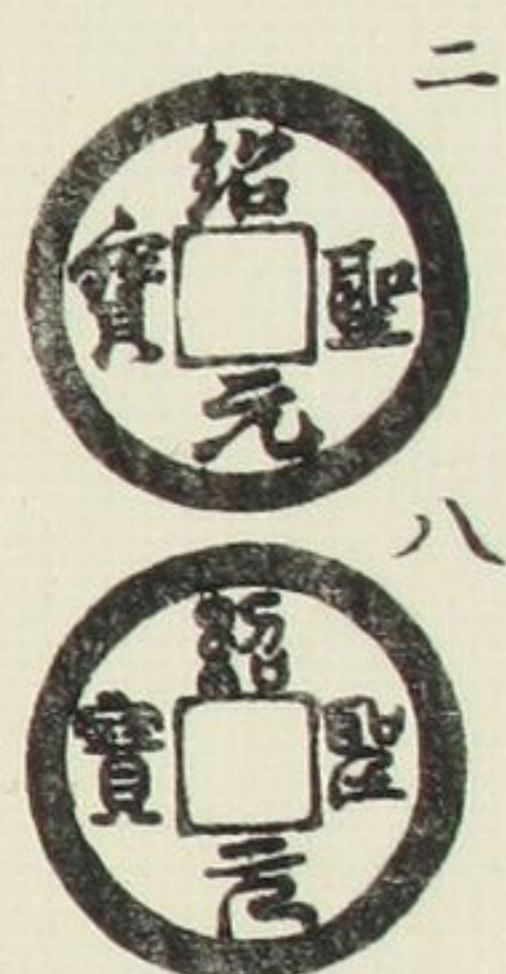


容弱  
長寶

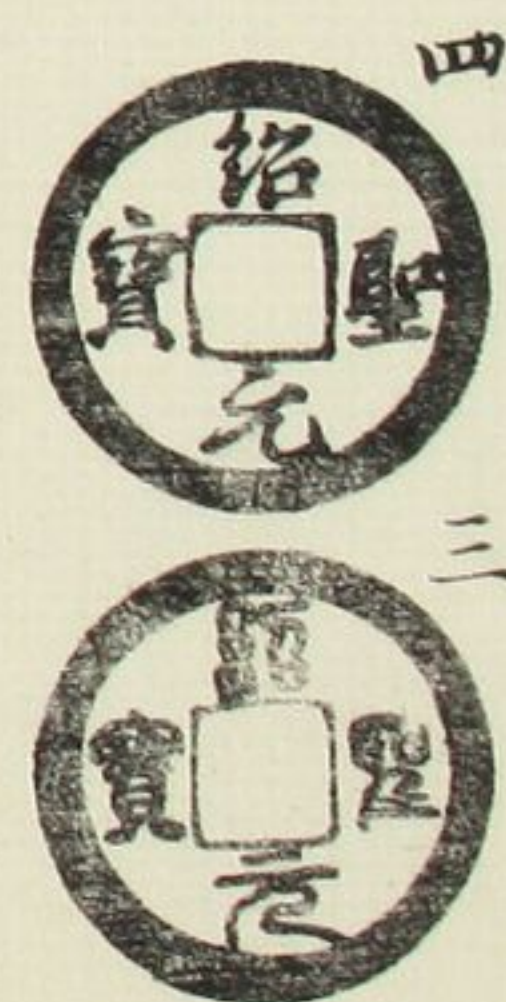




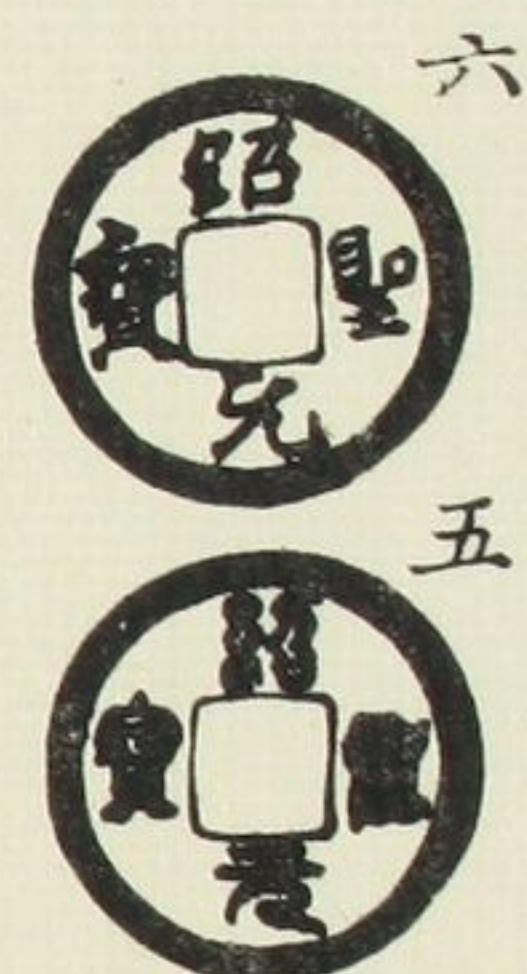
紹聖元寶  
長字  
俯元



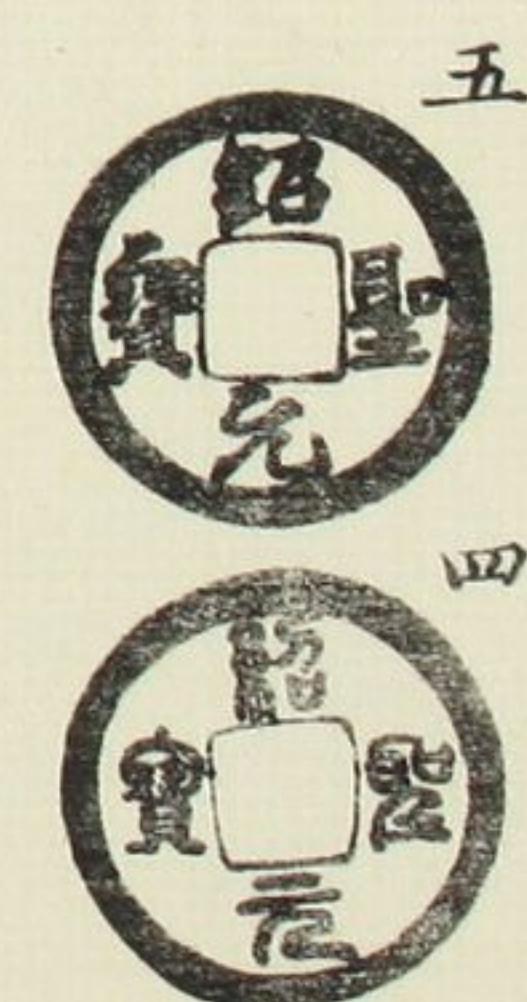
大足寶  
小異



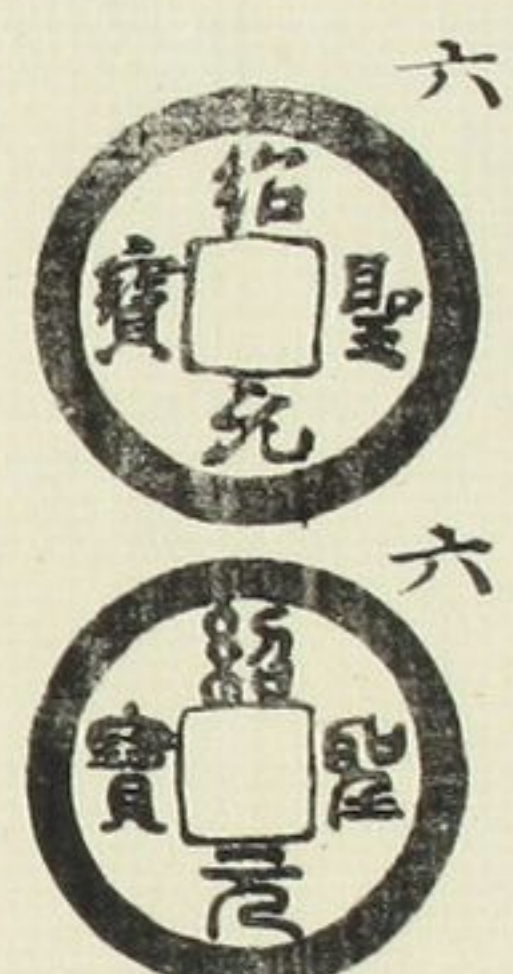
肥字  
聖寄郭



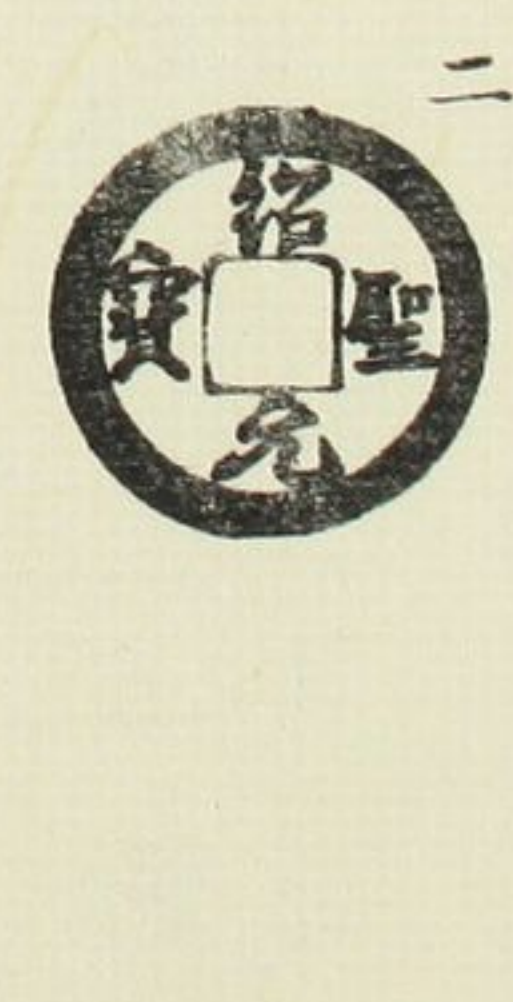
肥字  
寶寄郭



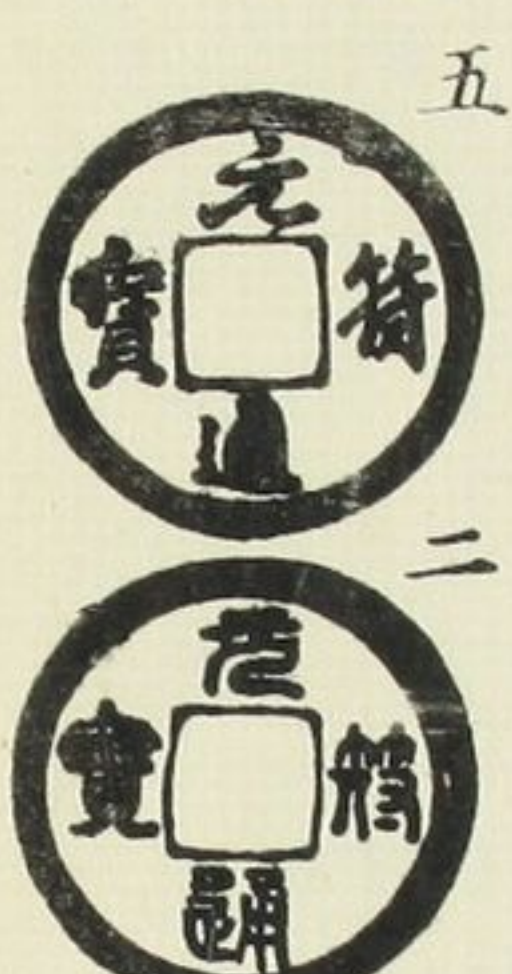
四出  
背濶緣



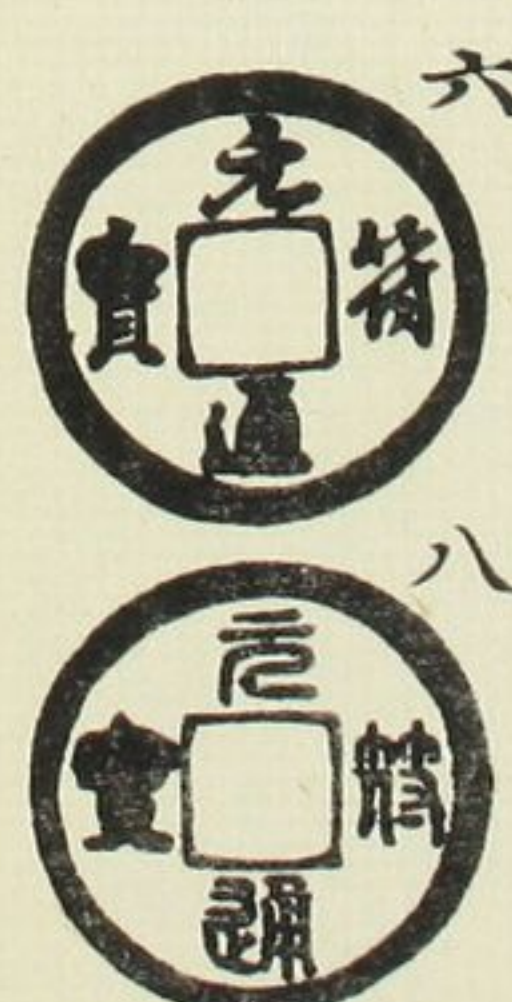
陰郭  
昂寶



元符通寶  
大樣  
仰元



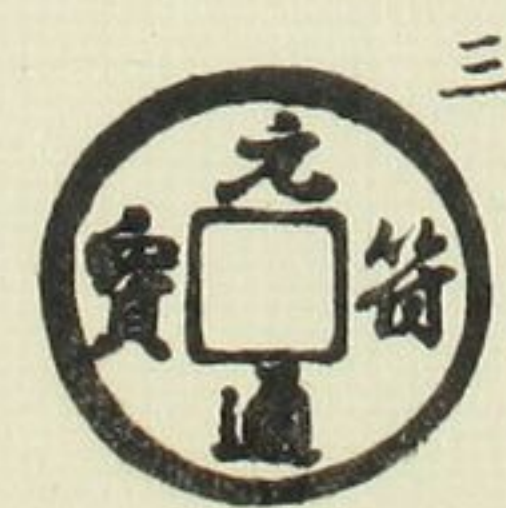
同上  
左元



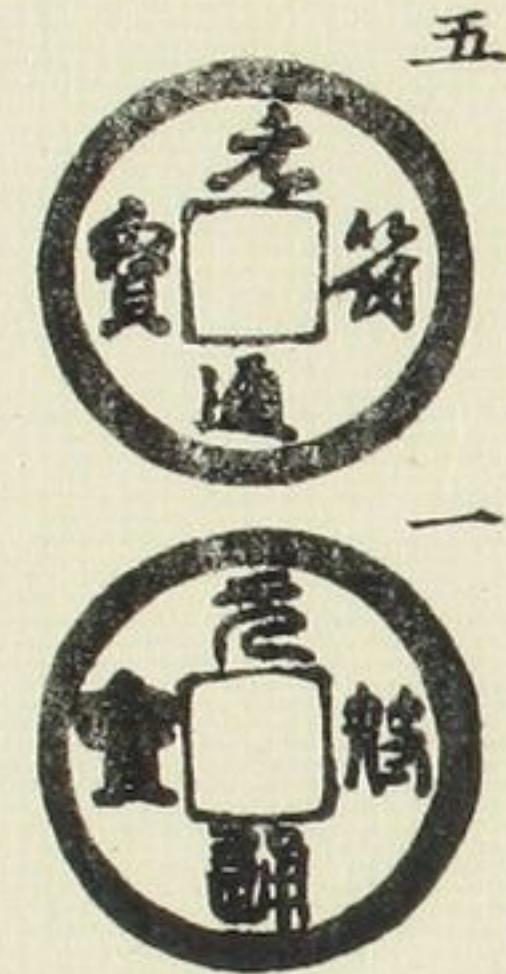
同上  
左通



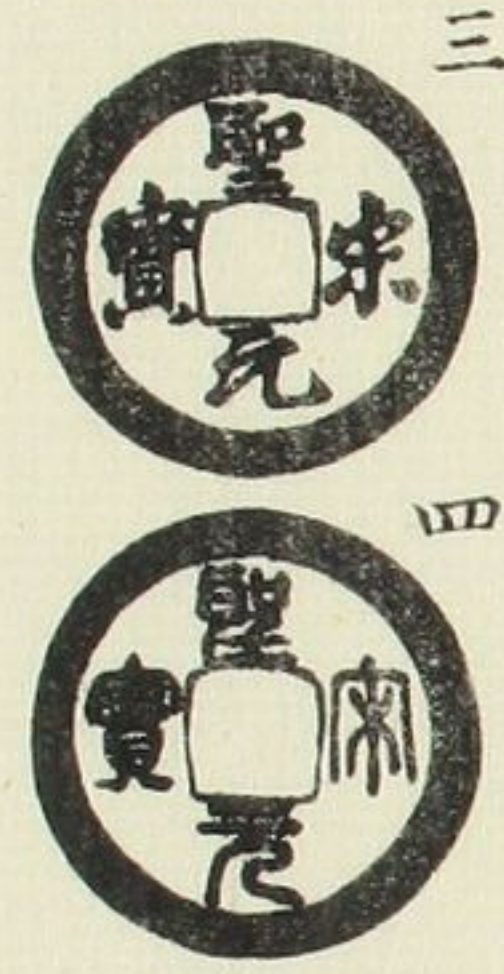
左通  
降寶



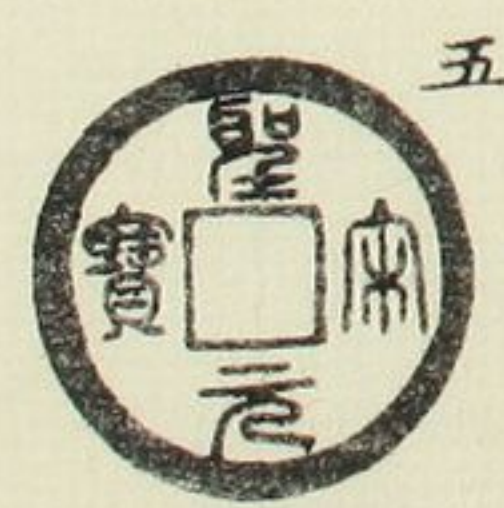
仰元  
小樣



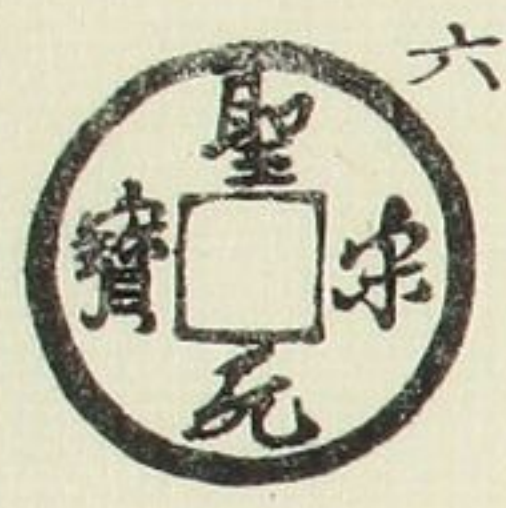
聖宋元寶  
正字  
濶緣



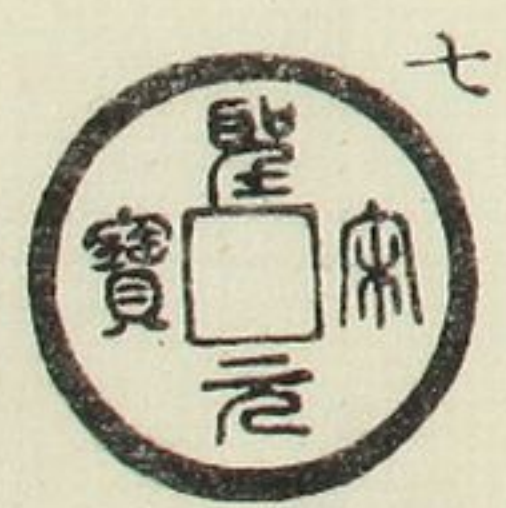
連輪  
濶緣



隔輪  
連元

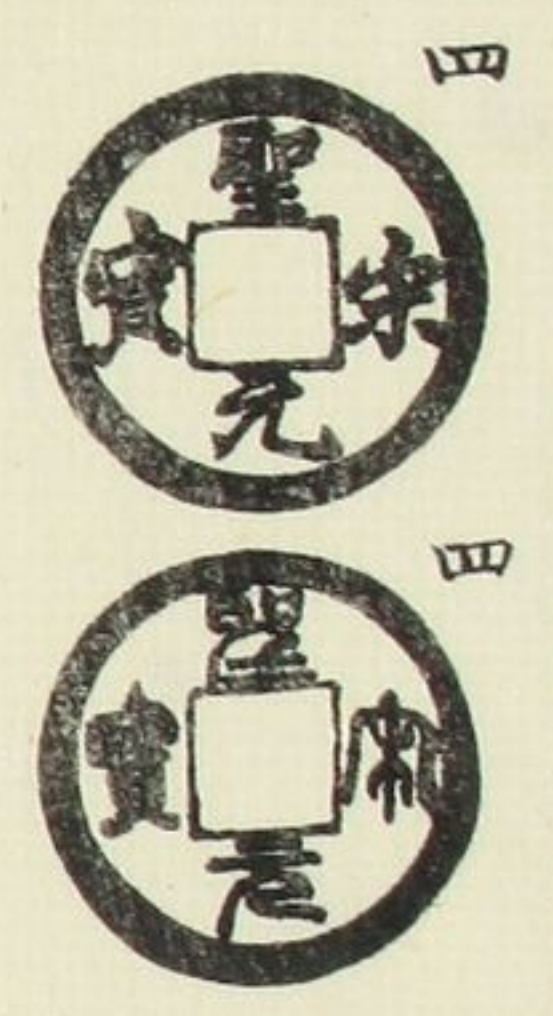


同上  
小字

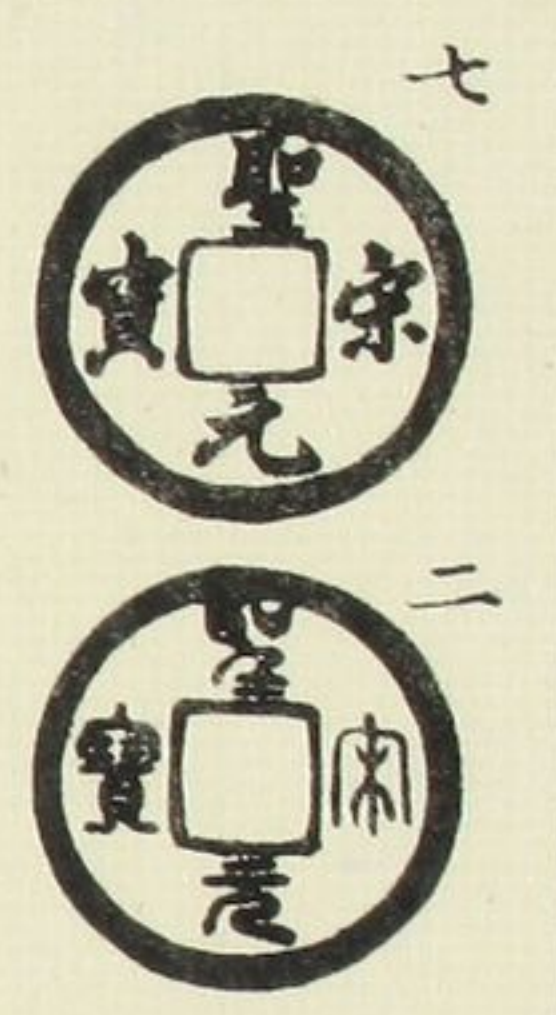




廣穿  
昂寶



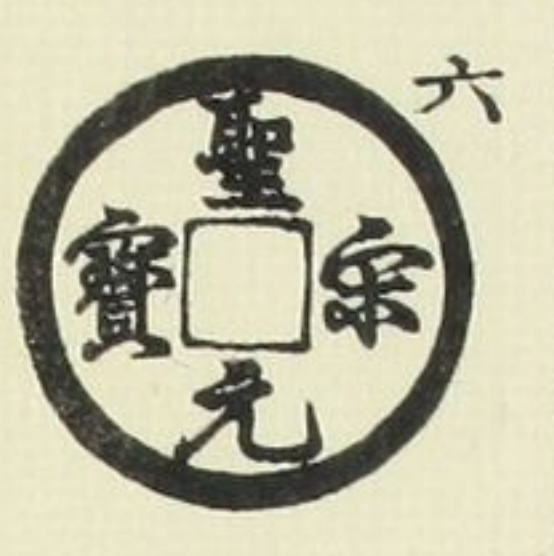
小字  
左聖



美制  
聖結



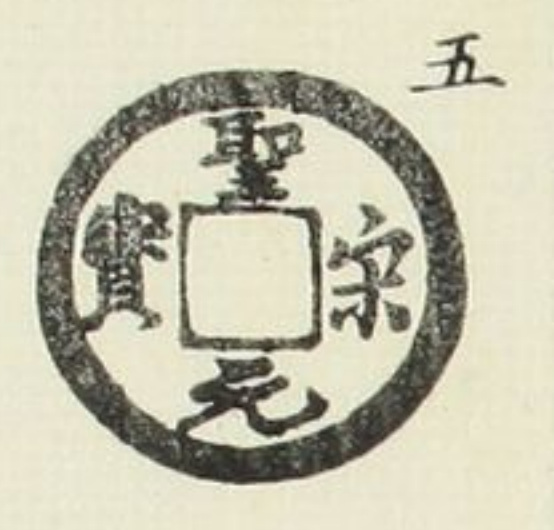
宋結



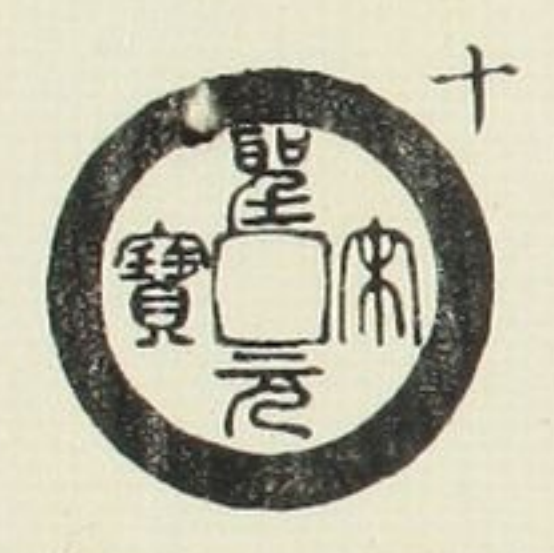
陰起文  
寄郭



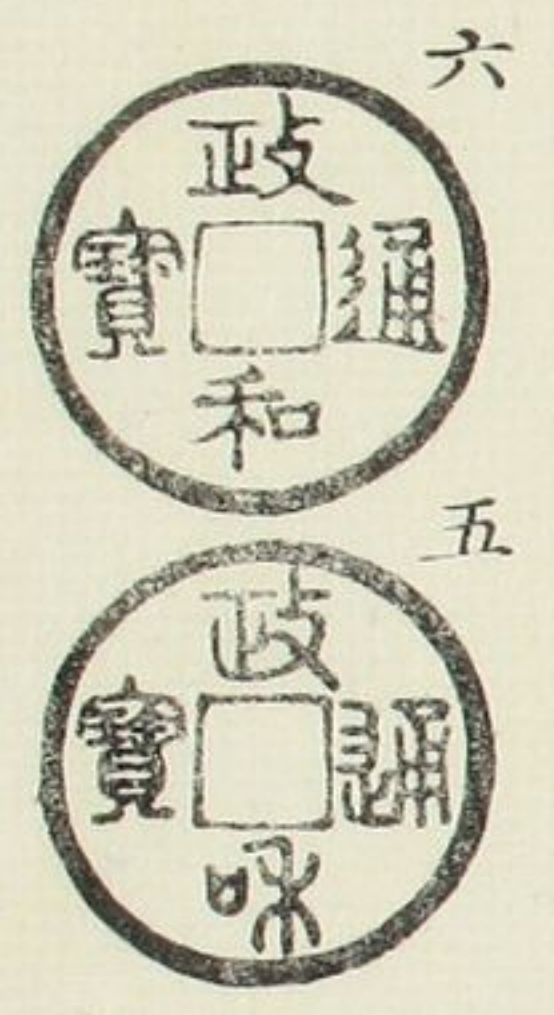
長尾  
細緣



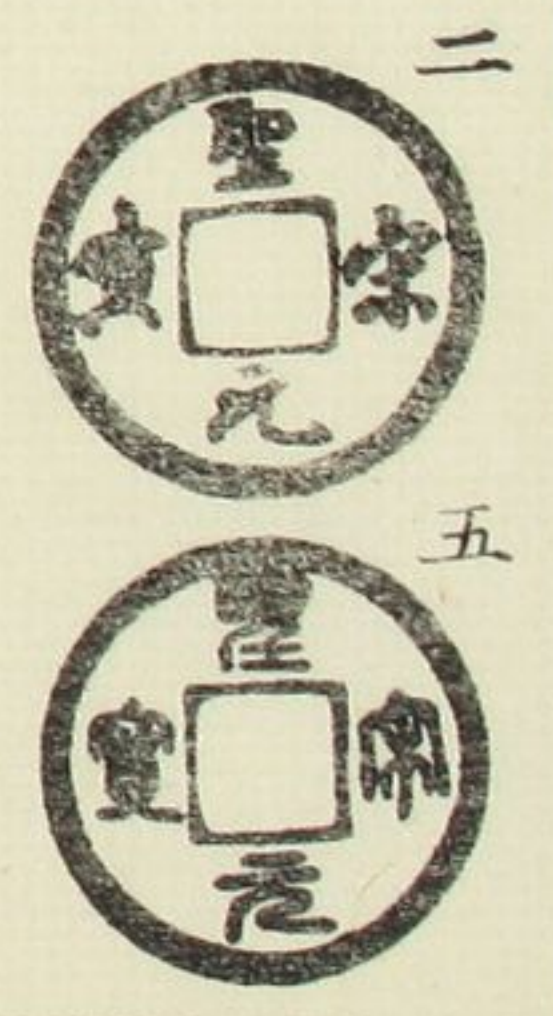
潤緣  
瘦字



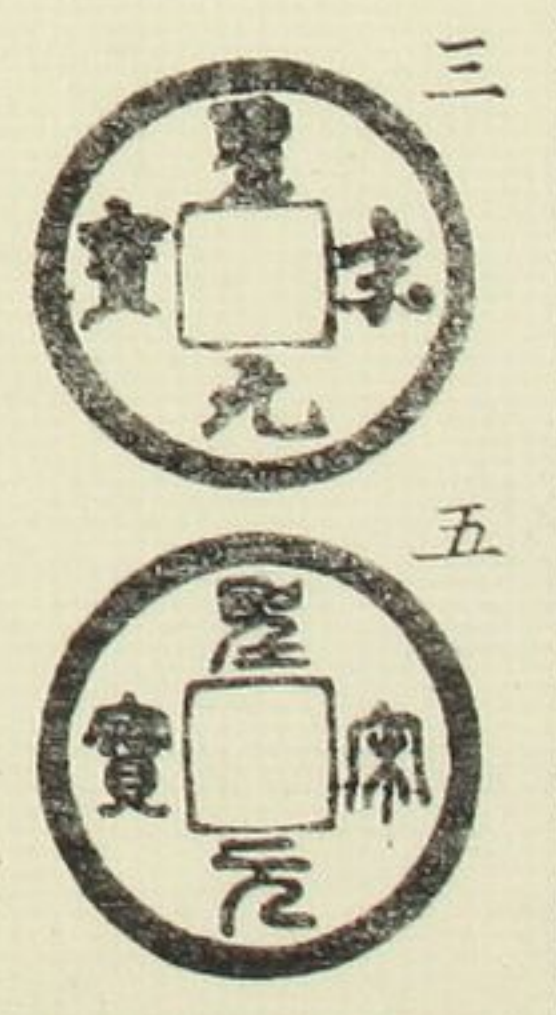
政和通寶  
美制  
大樣



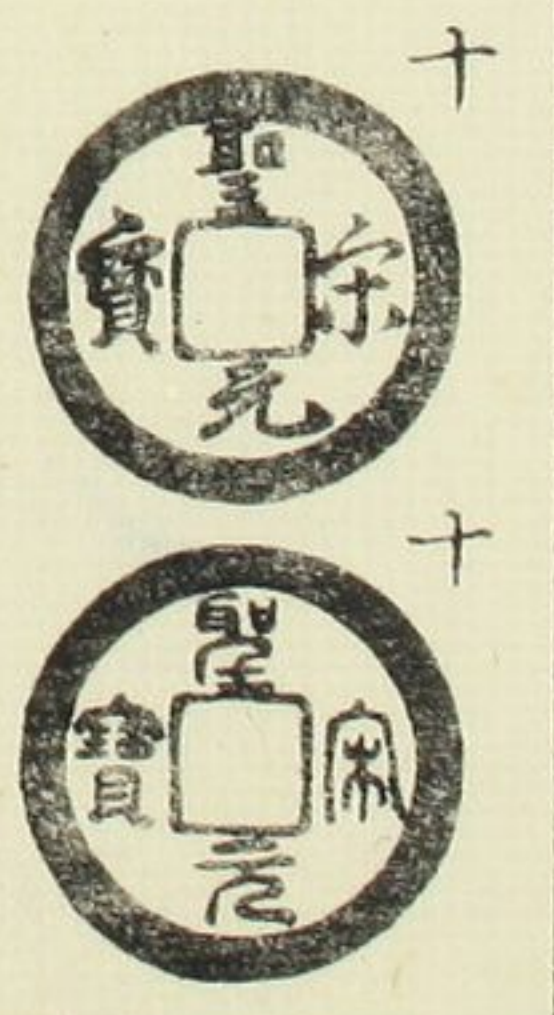
小字  
昂聖



同上  
宋寄郭



狹小  
小異



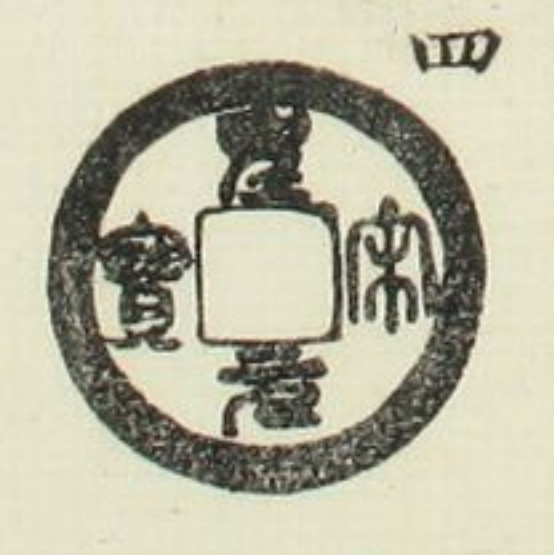
中穿  
大字



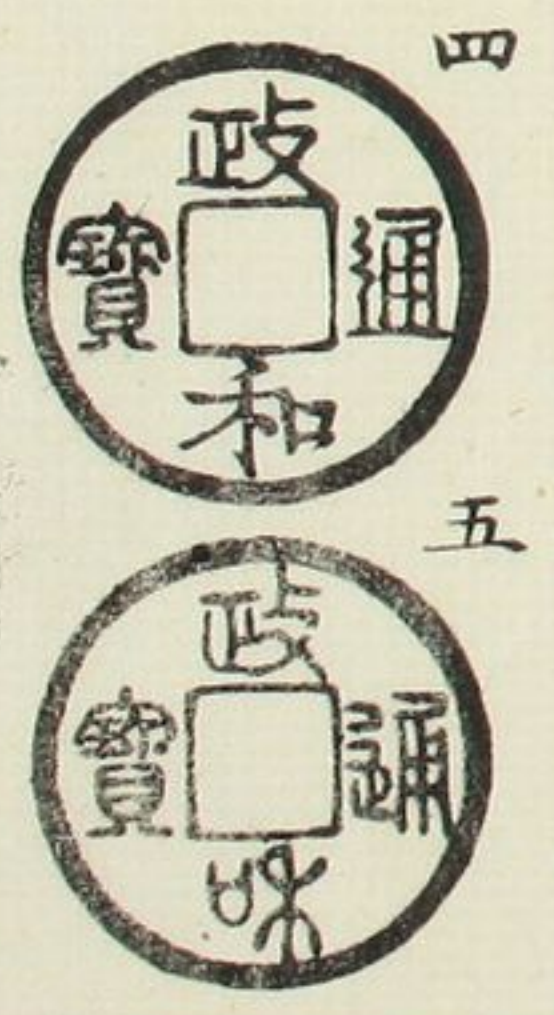
細字  
寄郭



含圓郭  
降寶



廣穿  
大字

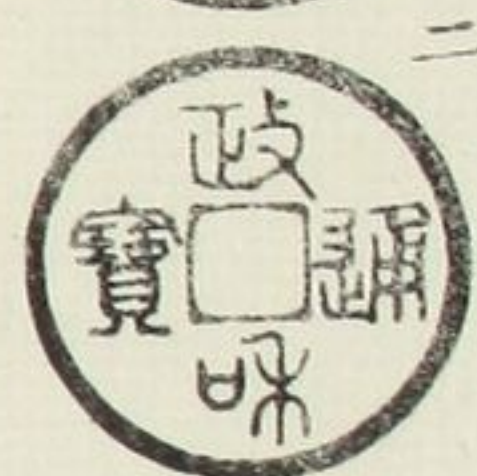
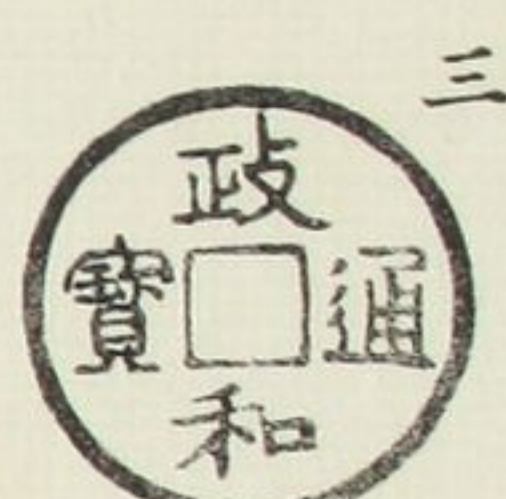


古今錢錄

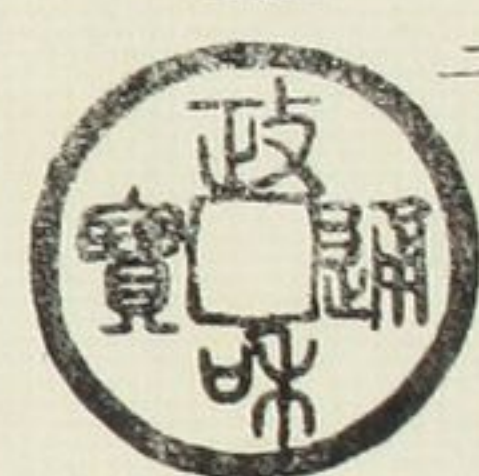
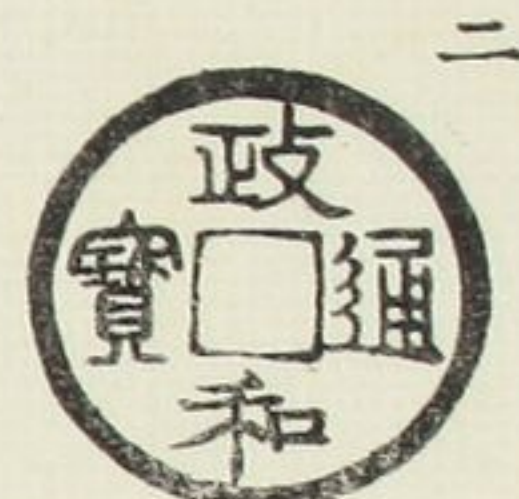
十四



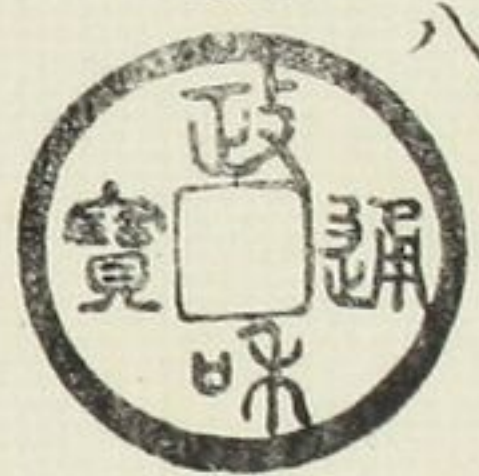
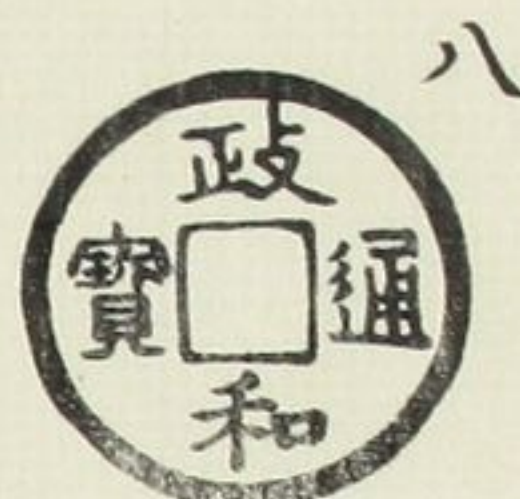
美制  
狹穿



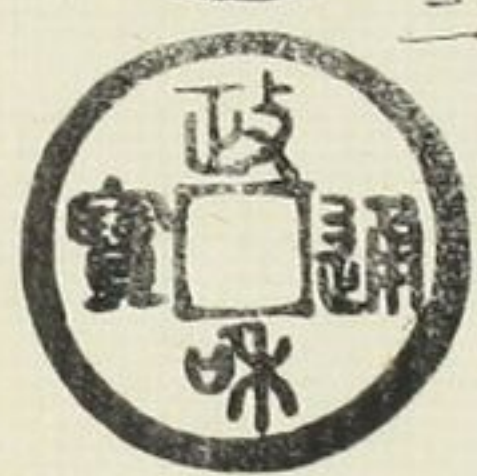
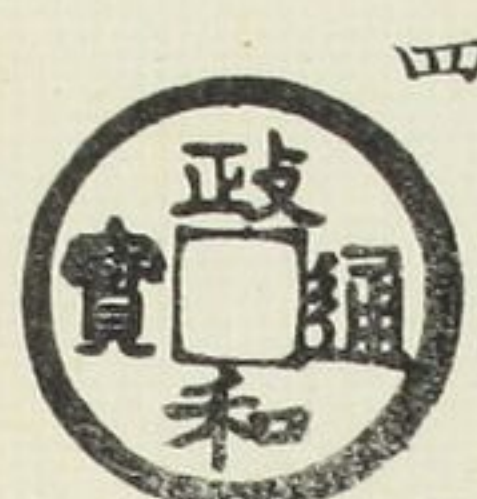
寄郭  
厚肉



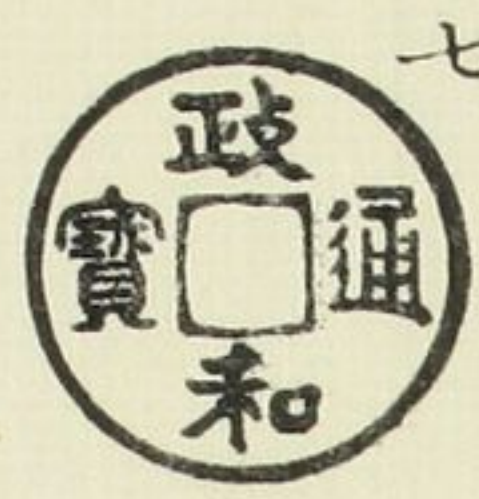
細郭  
大樣



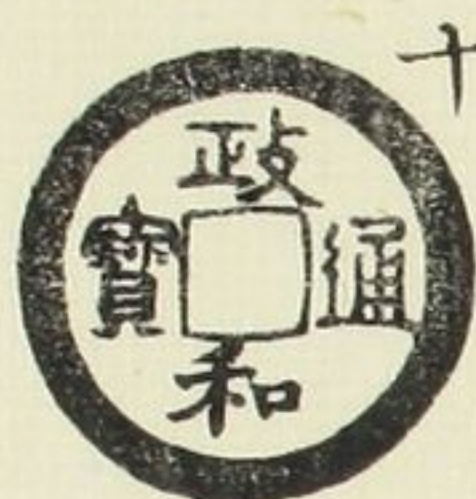
面四出  
昂寶



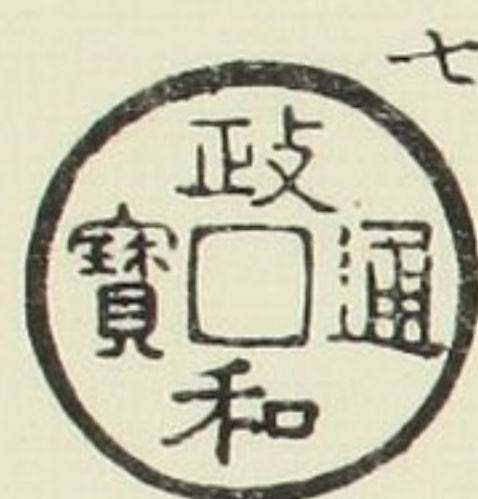
曲冠  
潤和



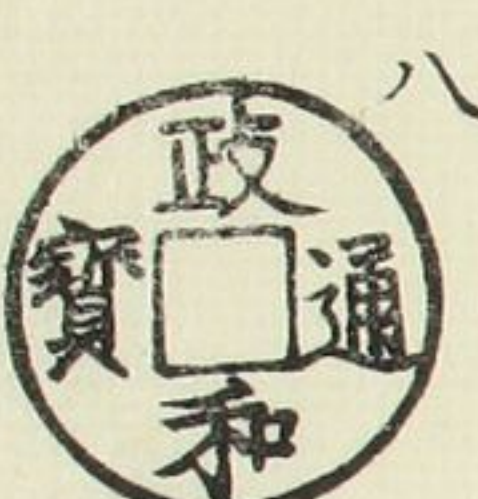
潤緣



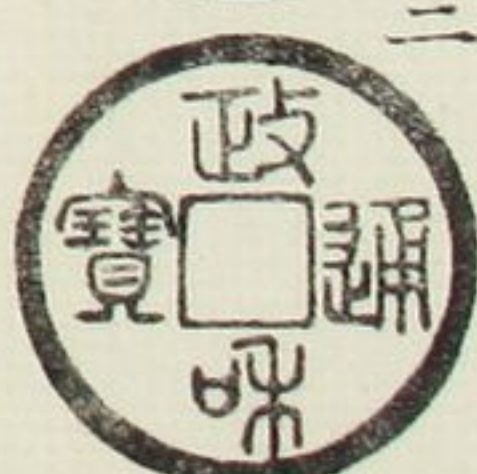
狹穿  
大字



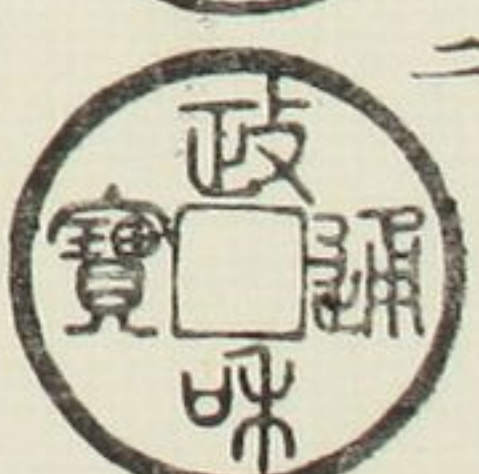
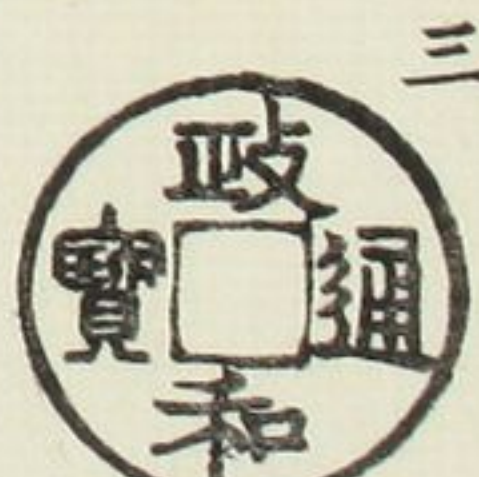
楷書  
中禾



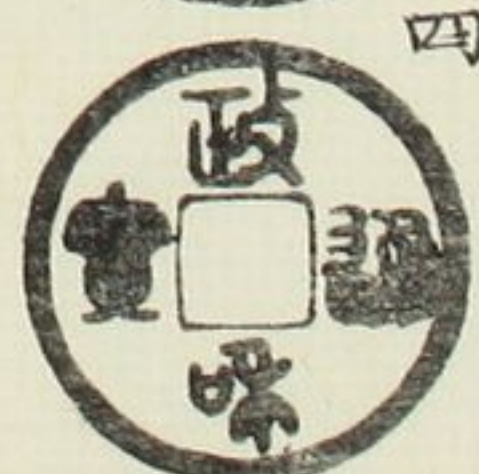
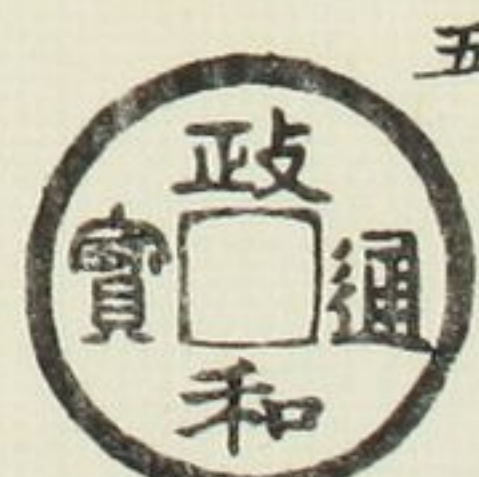
織字



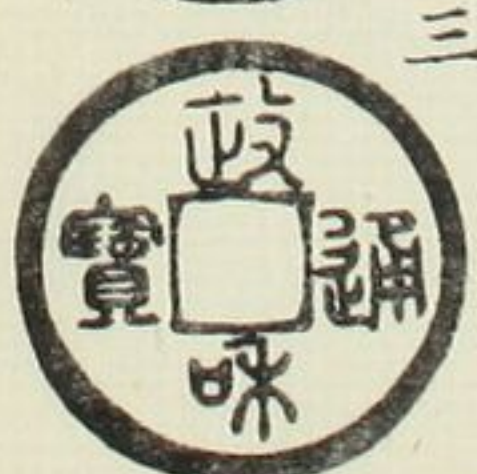
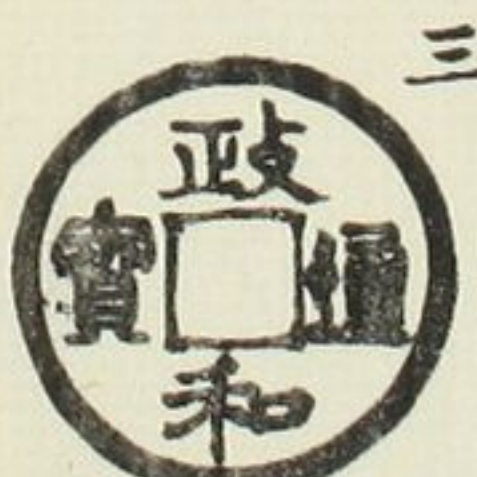
正足  
小異



陰郭  
降通



同上  
小異



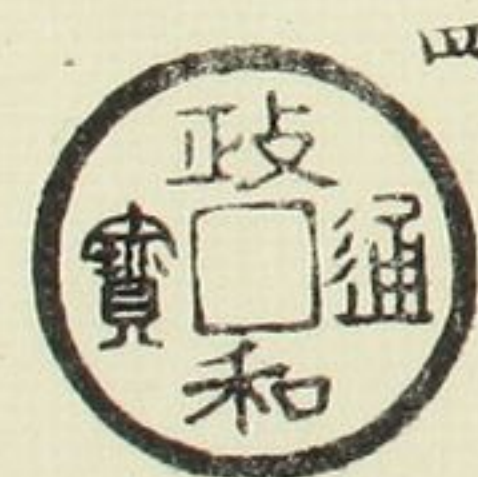
背四出  
中和



狹穿  
小和



柳葉  
潤政



同上  
狹穿



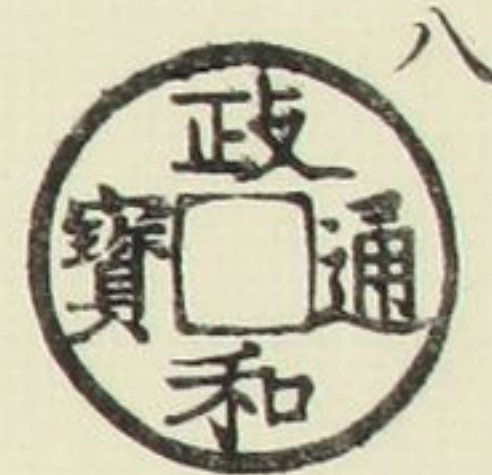
符

編

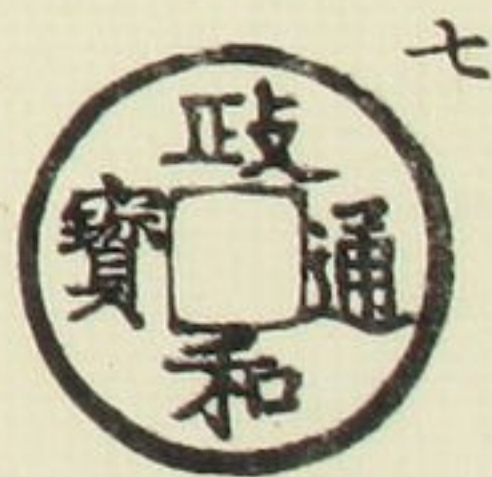
十六



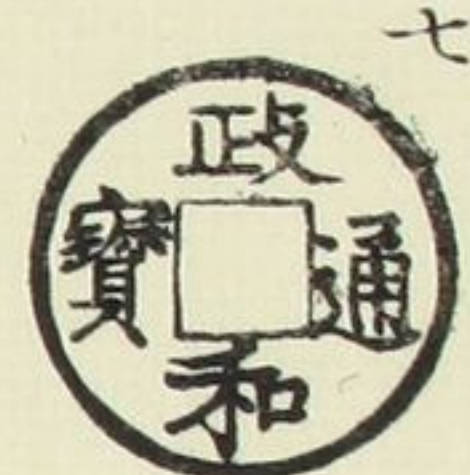
同 上  
大 字



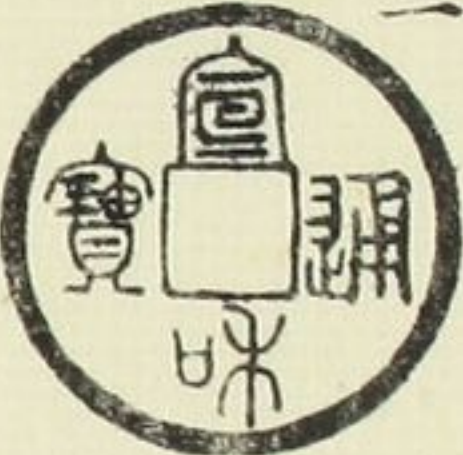
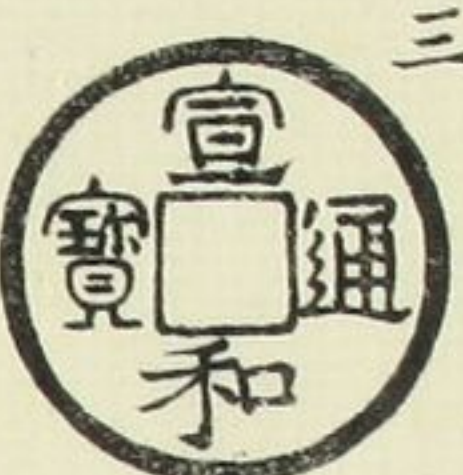
同 上  
接 郭



同 上  
放 政



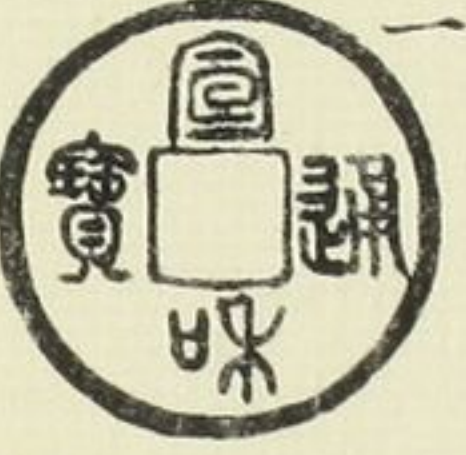
宣和通寶  
美 制  
大 樣



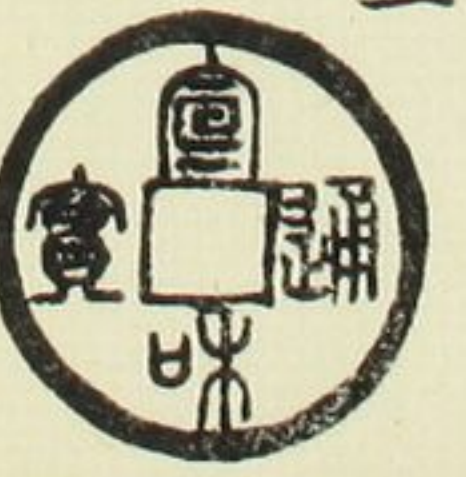
寄 郭  
大 字



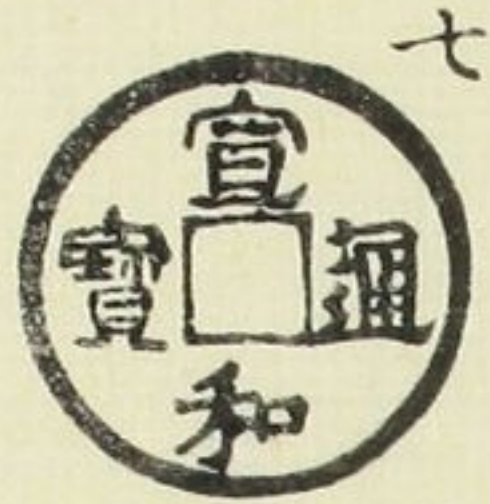
細 郭  
濶 和



厚 肉  
離 室



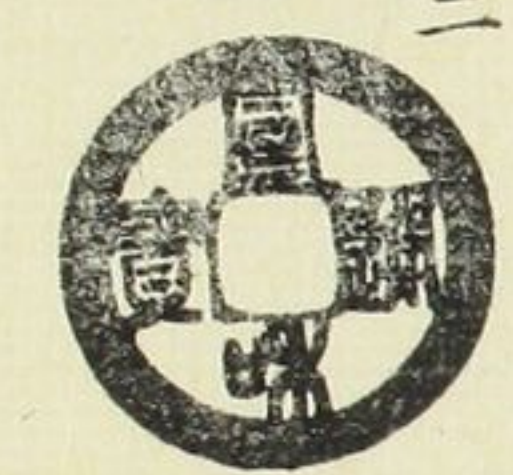
降 和



中 未



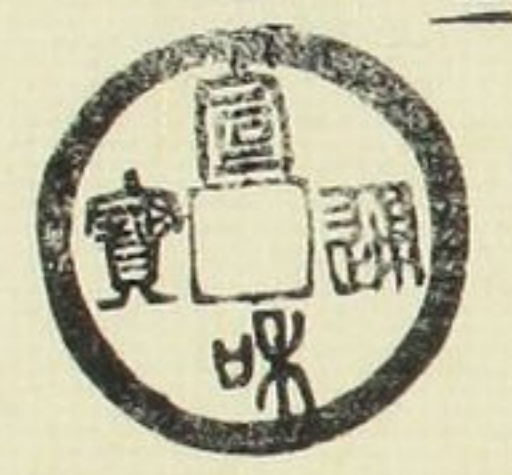
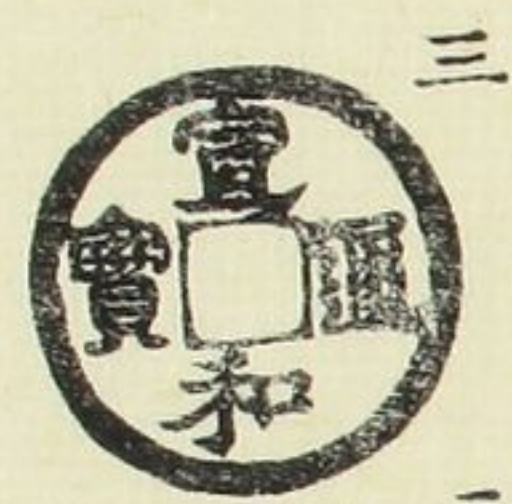
平 潤  
闊 緣



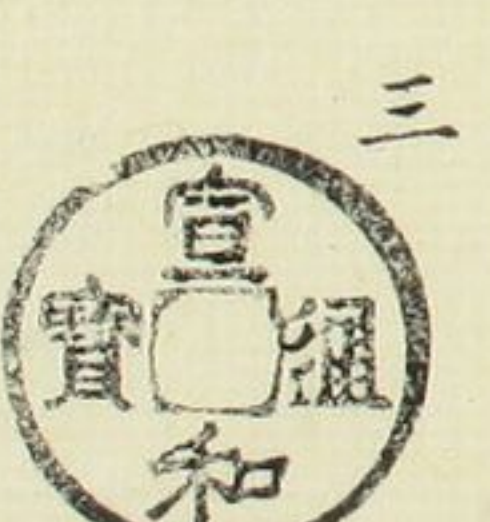
同 上  
細 緣



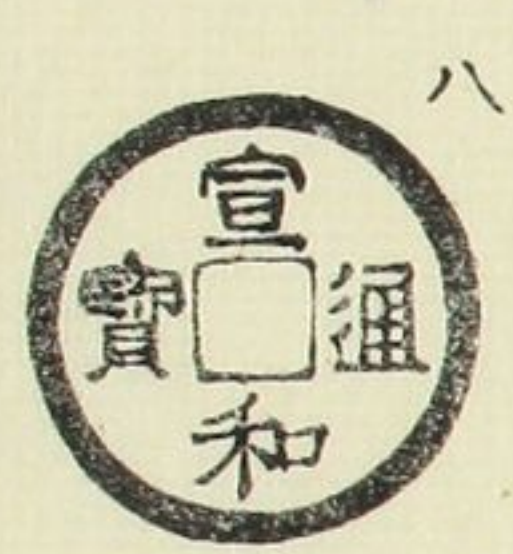
俯 宣  
小 樣



短 室  
中 未



短 室  
縮 宣



厚 肉  
大 樣

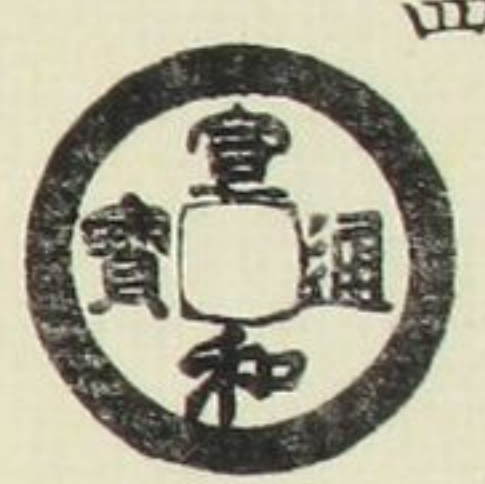


宣和通寶

十七



濶緣  
縮字



楷宣  
廣和



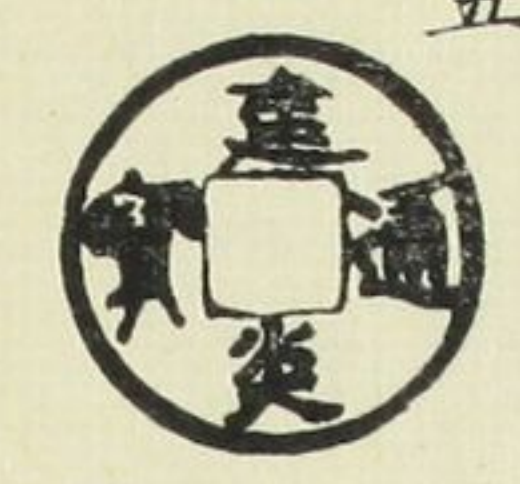
同上  
狹穿



建炎通寶

無背

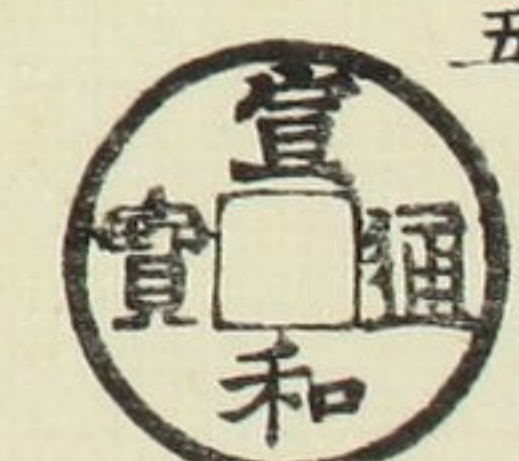
五



短室  
小樣



同上  
小和



同上  
濶緣

