







# 光明真言之道場

招提寺釋迦御舍利樹前光明真言者不勤勤行也  
釋迦如來特真言最為悉勤天御舍利供養之八木一斗入  
御鉢給也未來際之勤行僧伽盡新也

三千人之内供養八木者可被送招提寺藏文此列人者  
光明真言之道場 三千佛名并過去現在名張可誦之矣

雖一段小  
可寄進之



佛之子輻輪  
長一尺捌寸





招提寺金堂同釋迦後造用遂万坏



供養人別一沐十月晦日可送本所

經云貧女金薄  
塗佛九十一劫  
得金色身快樂  
無熱值佛證果



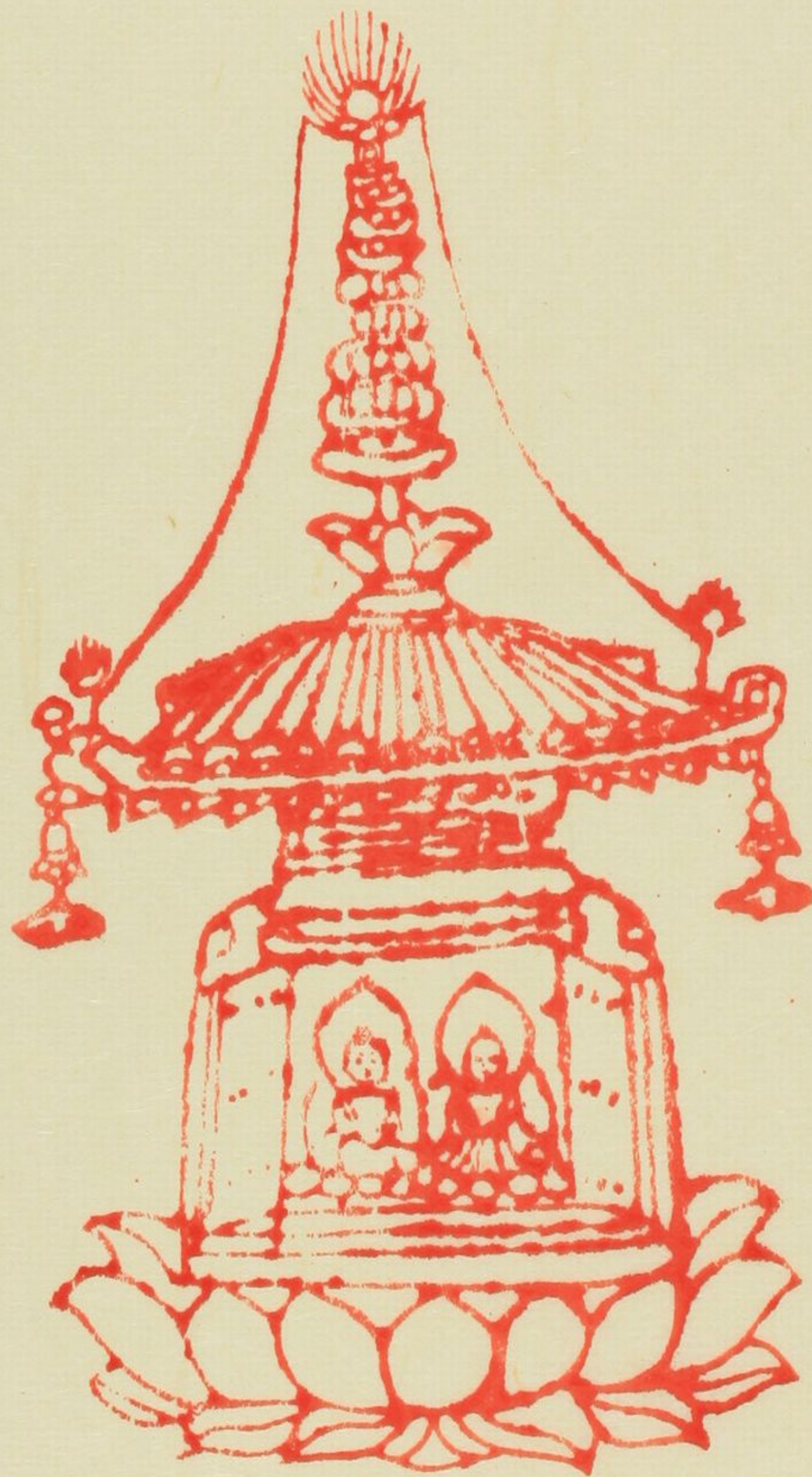


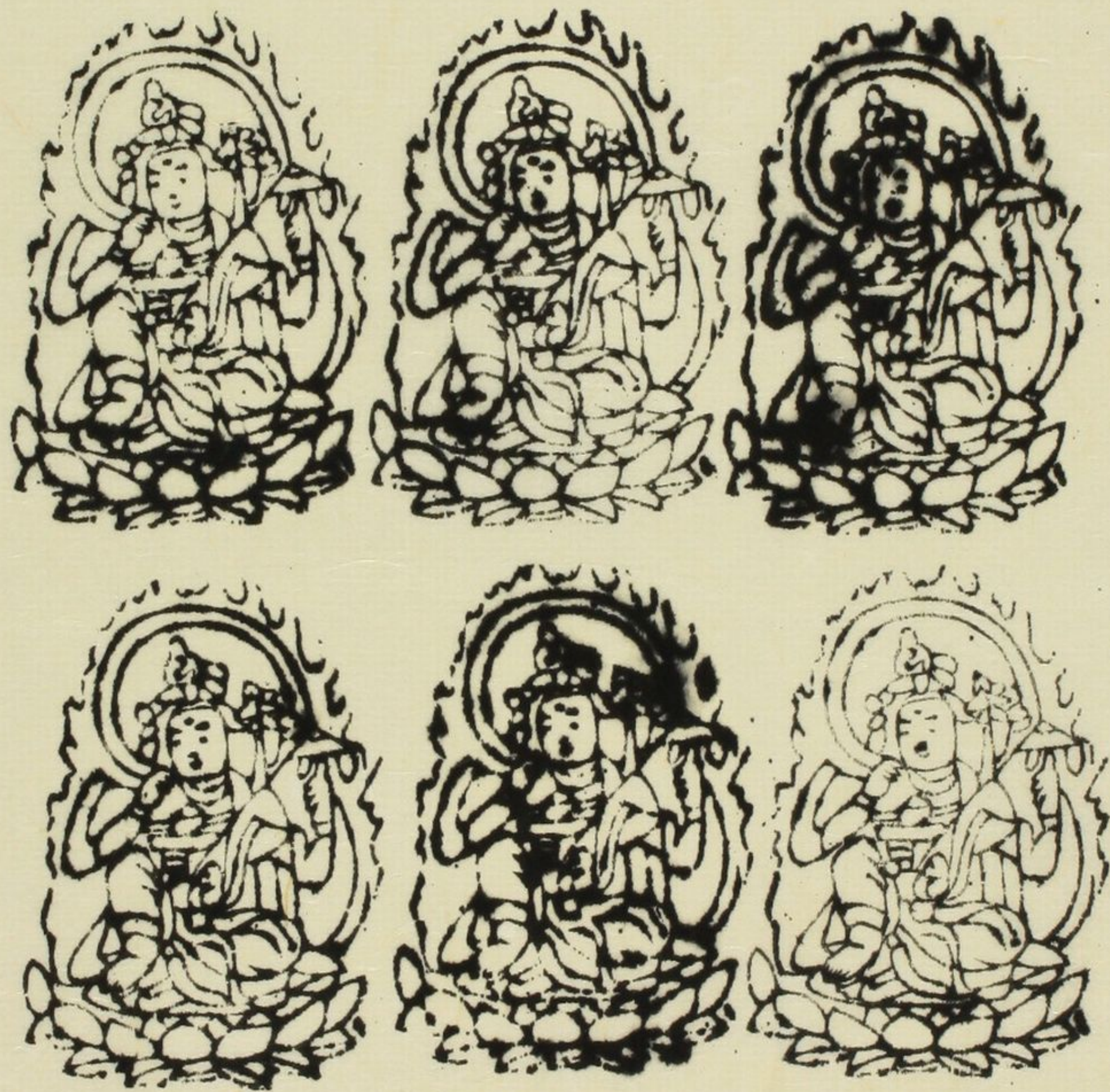
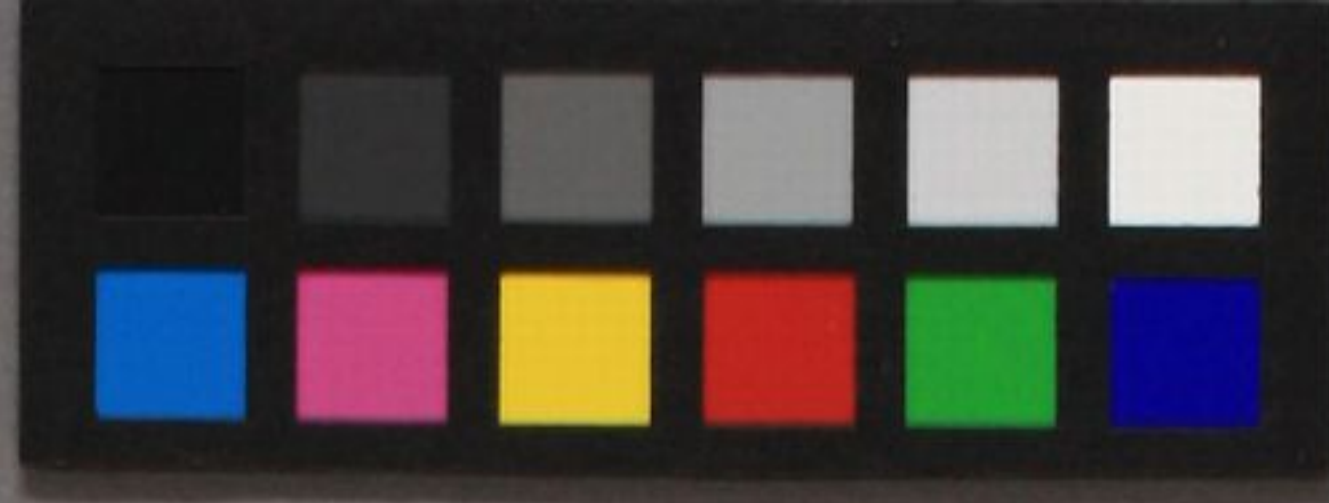
長谷寺自明年限三箇年每年三月十五  
 日六十八国四部諸衆一晝一夜不斷念  
 佛阿鉢陀經四十八卷并山林野徑江河  
 海邊致生禁斷以是功德聖朝安穩法東  
 衆生平寺利益者依 宜自勸進如件  
 建長七年八月 日 大勸進之阿鉢陀佛敬白



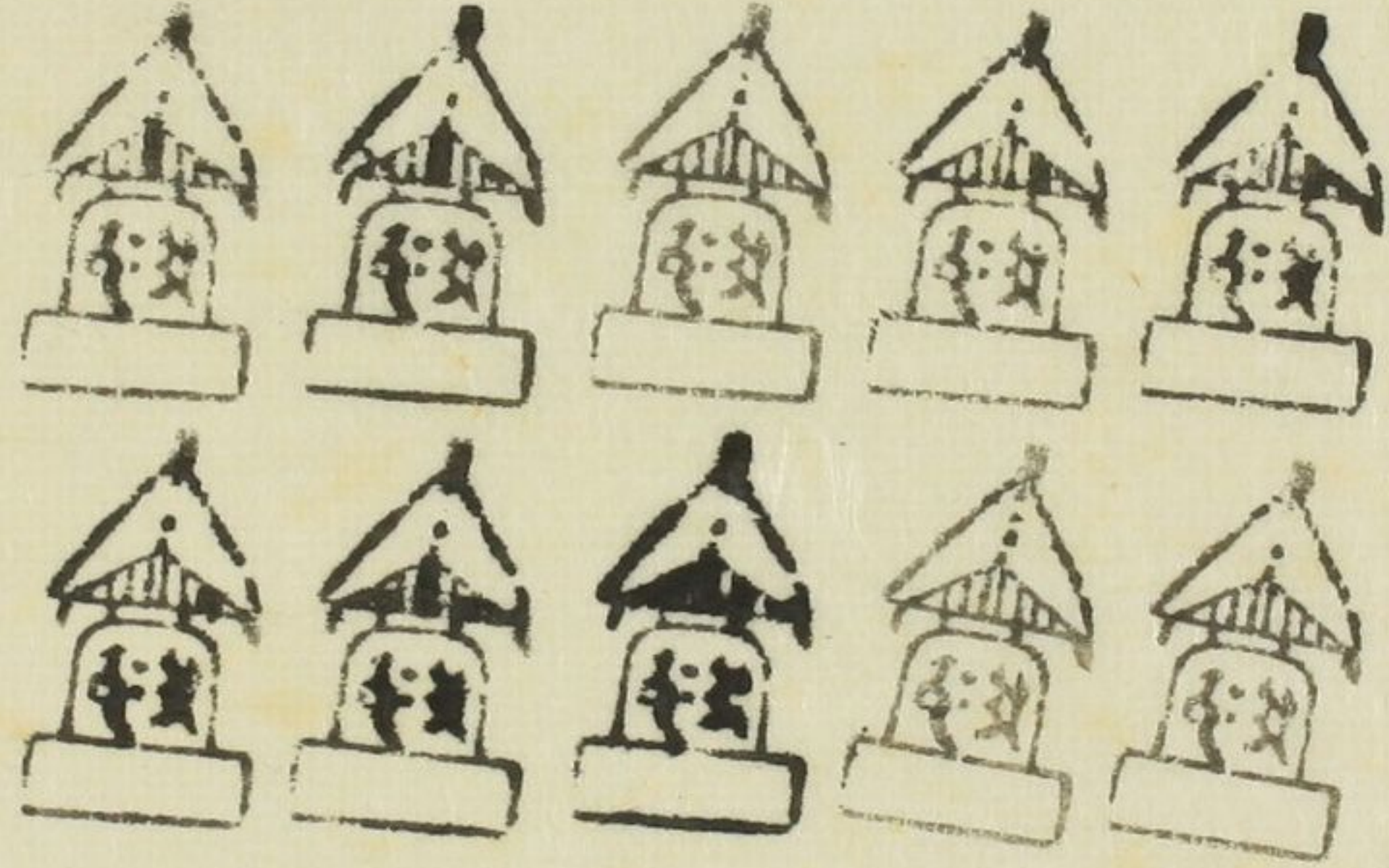






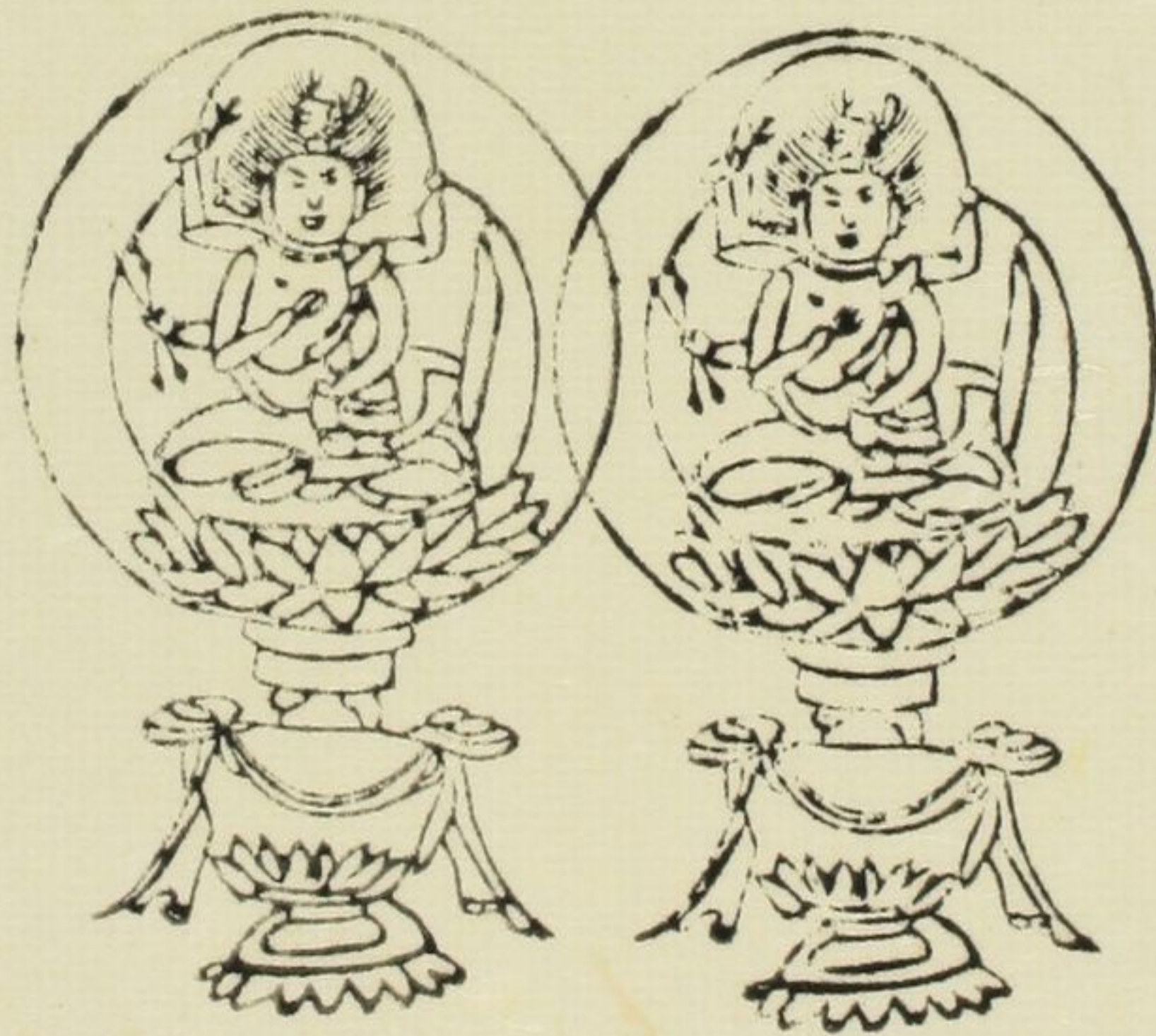
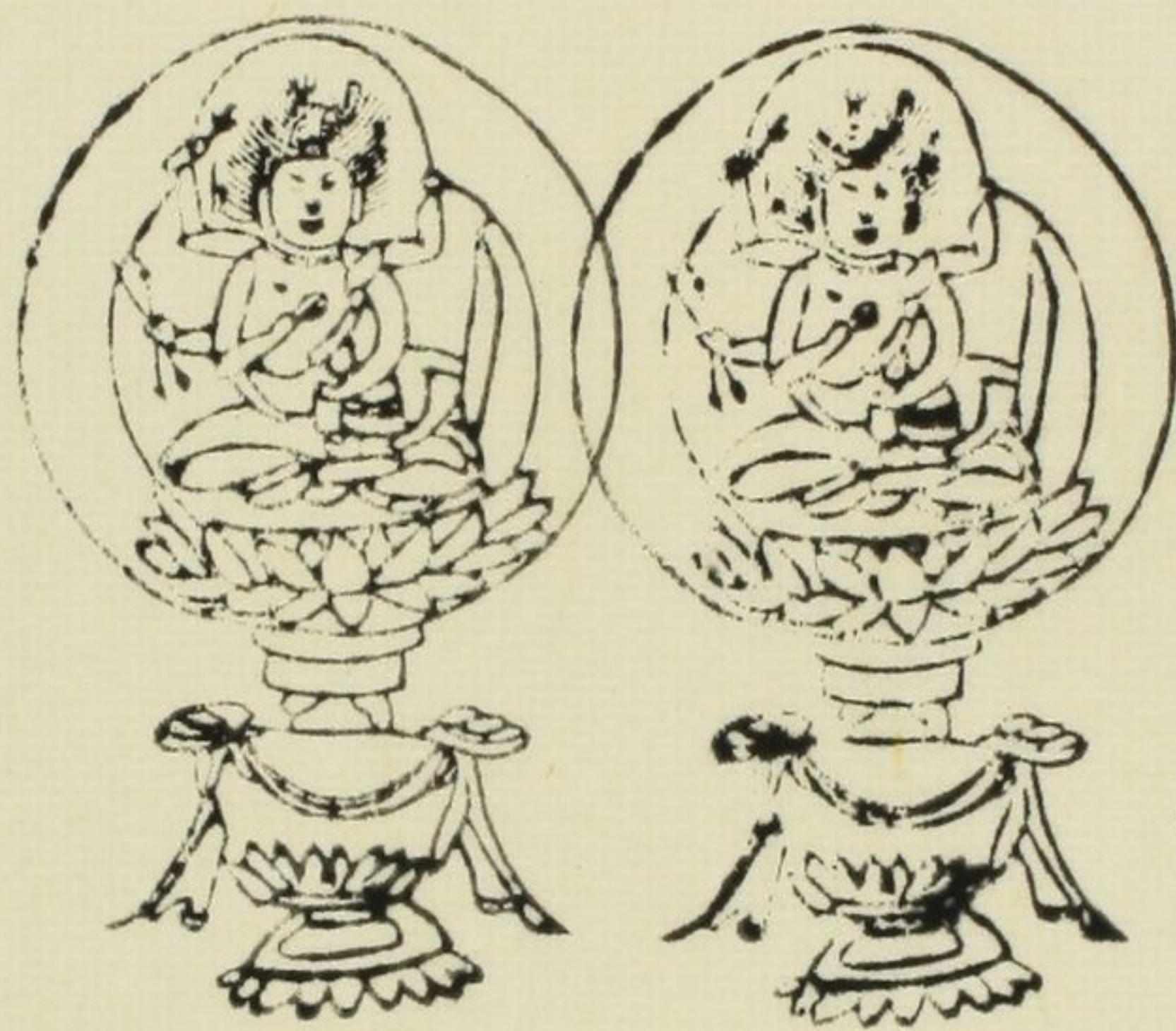




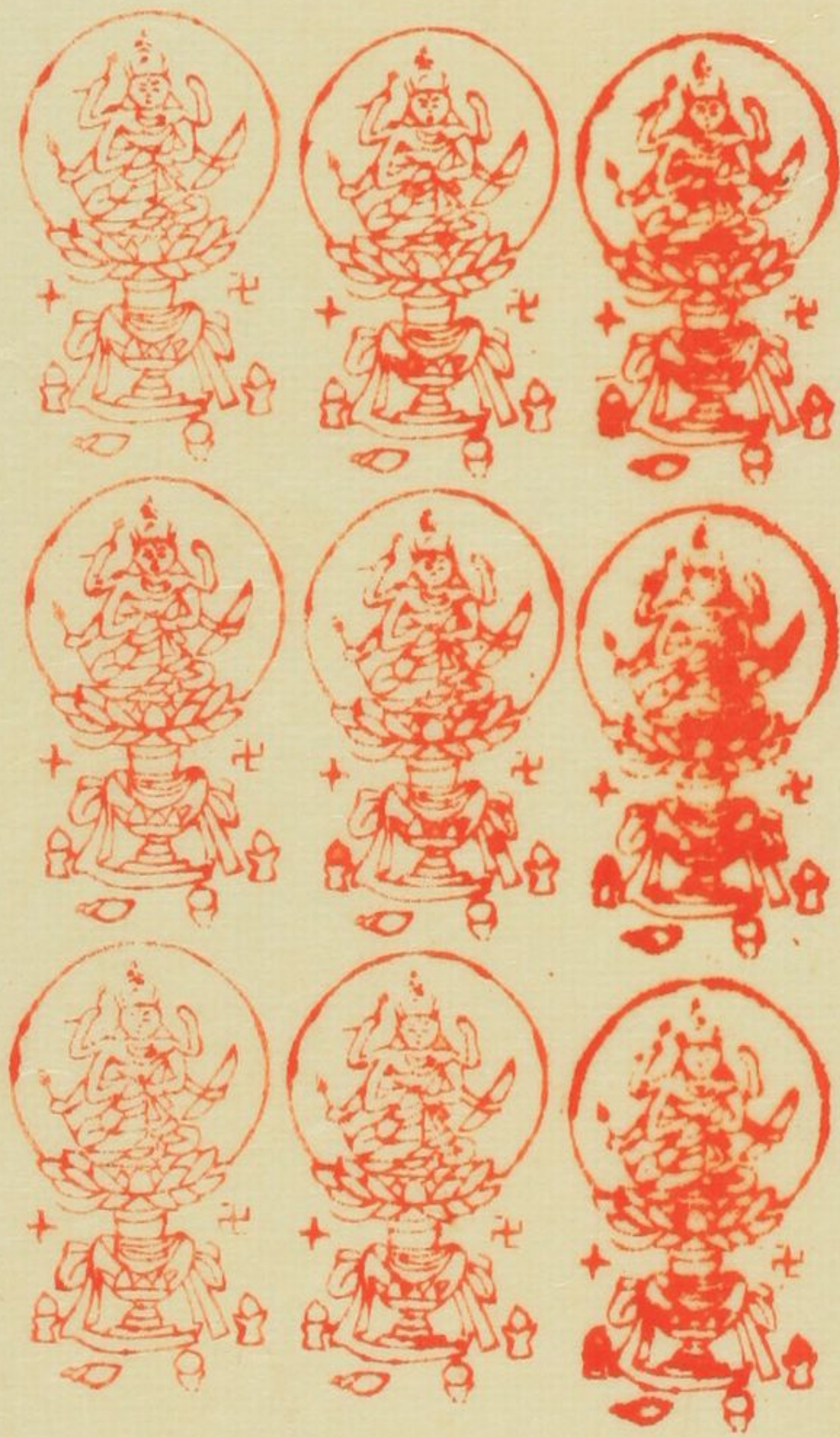




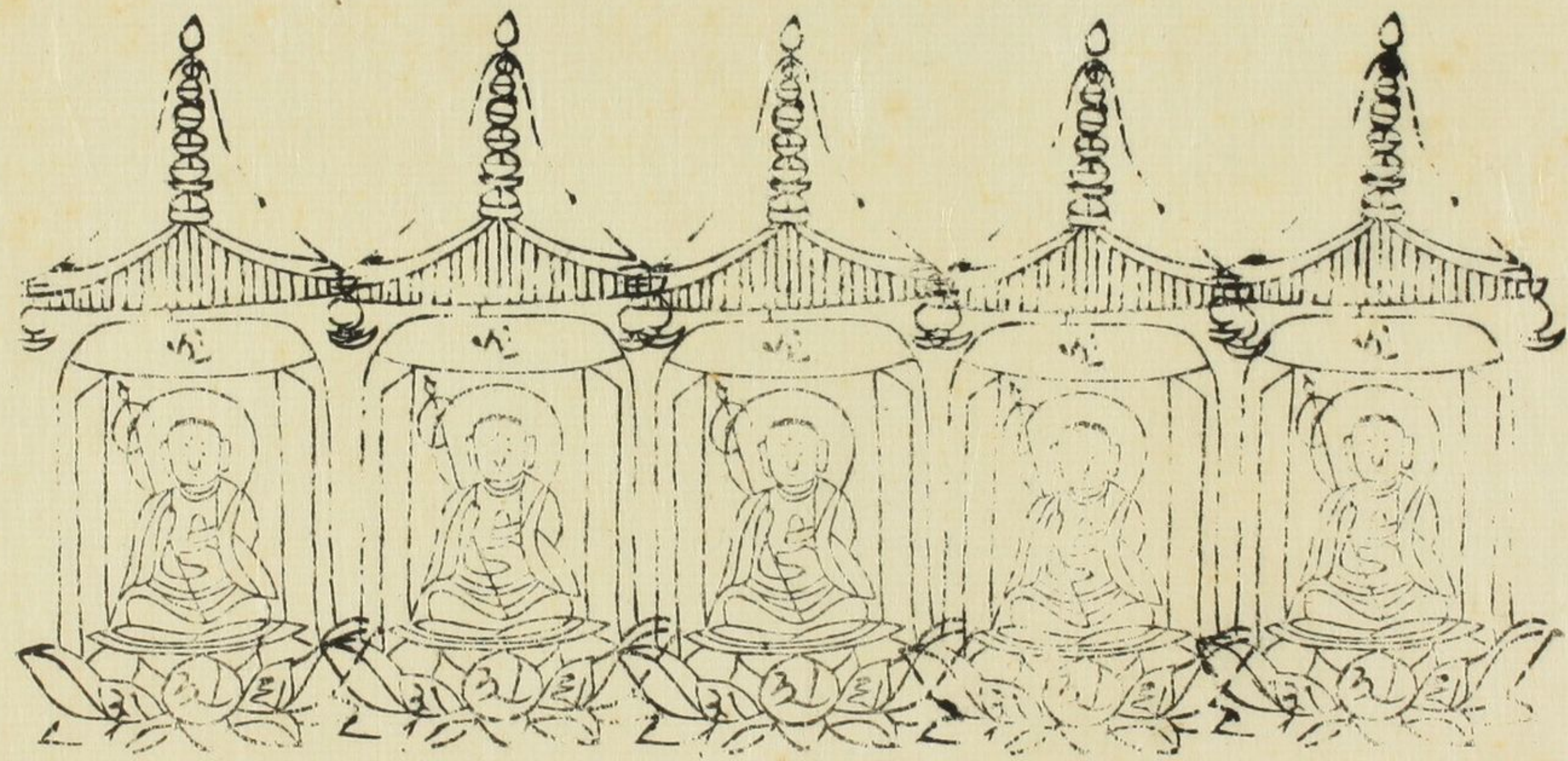




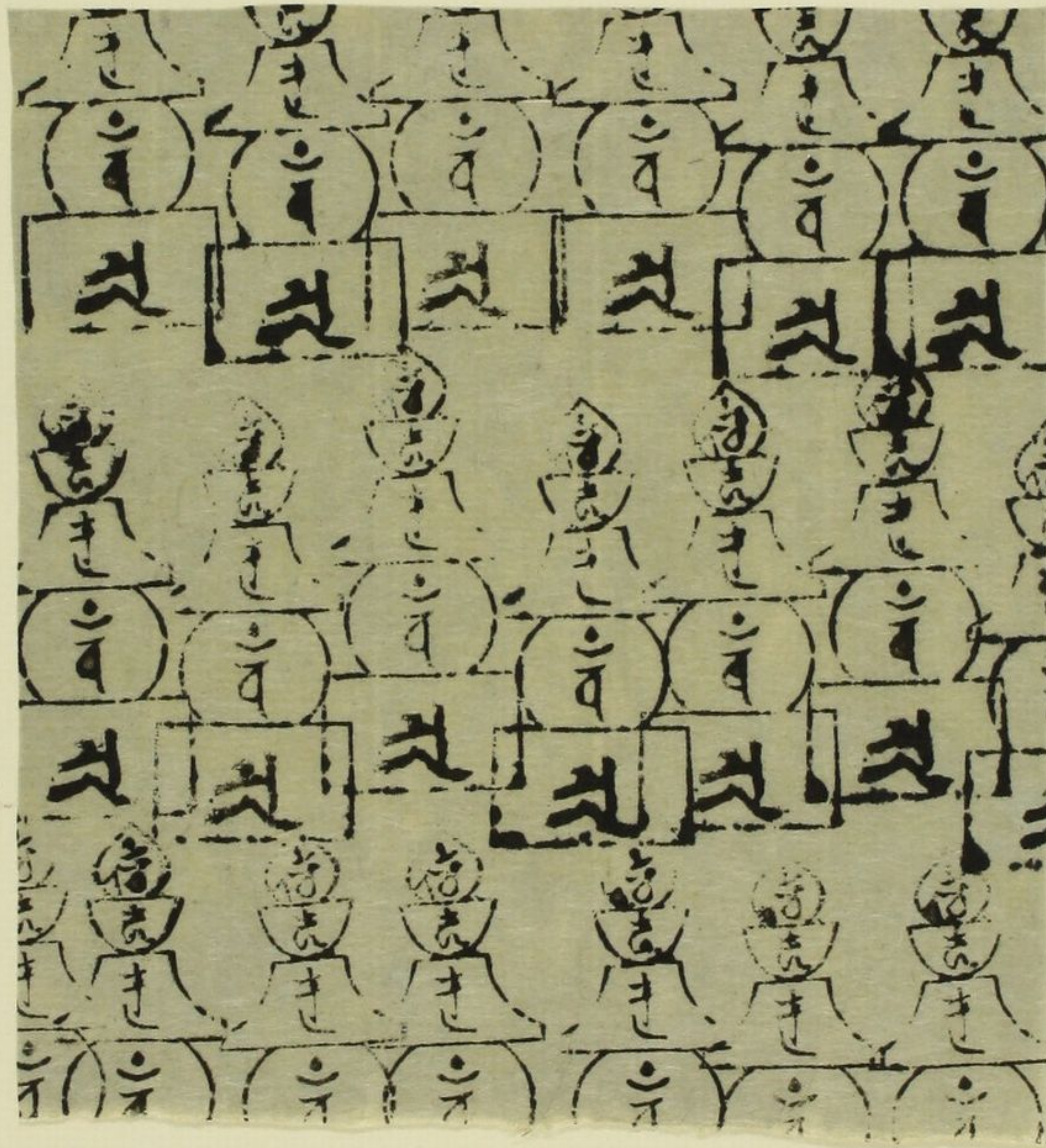
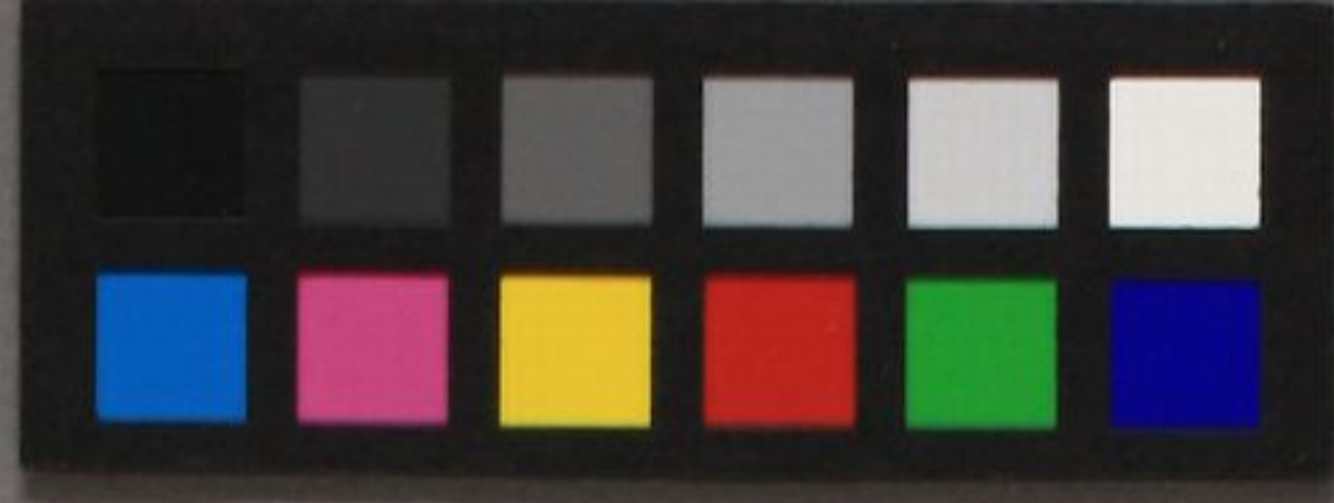


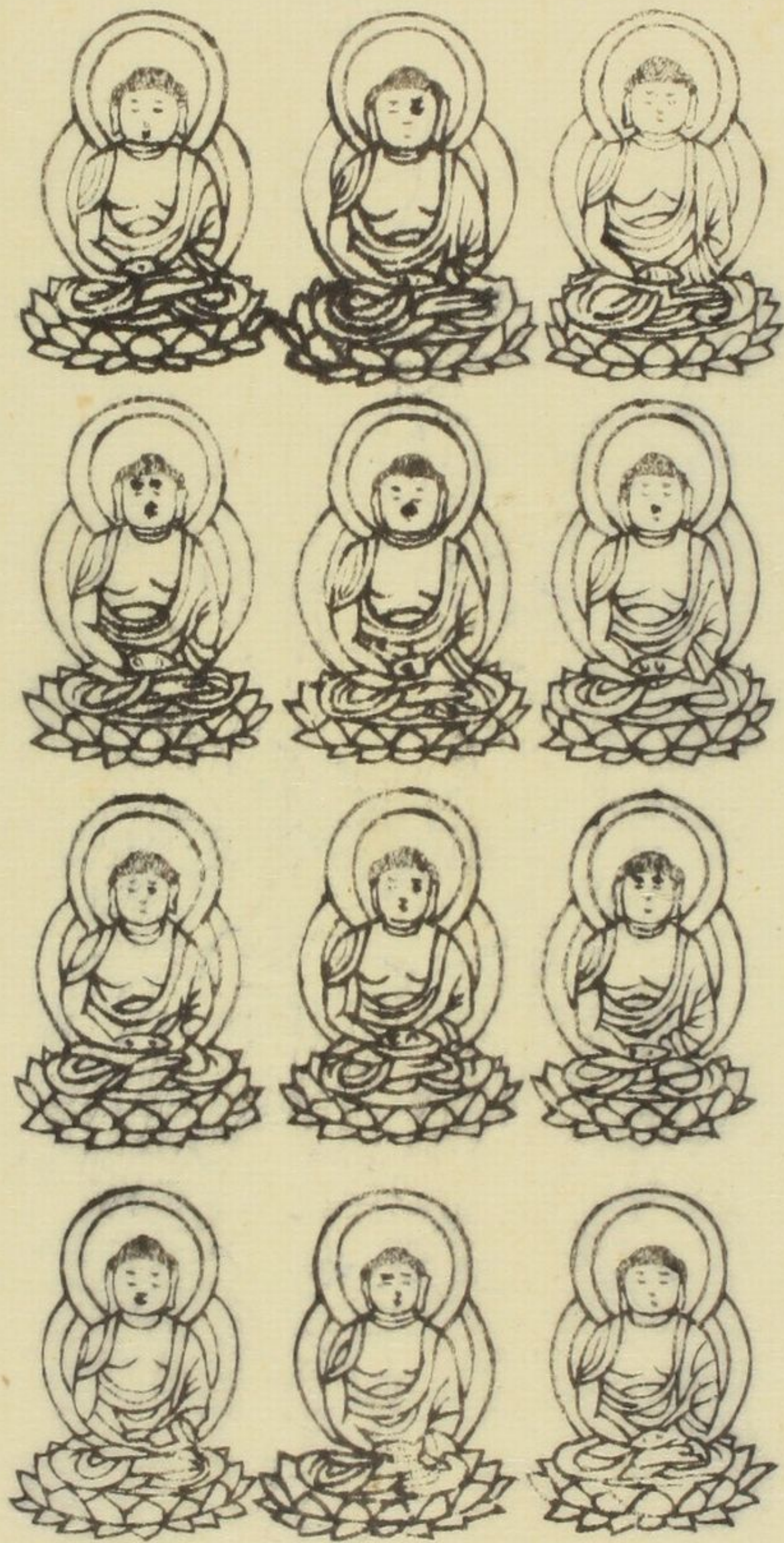
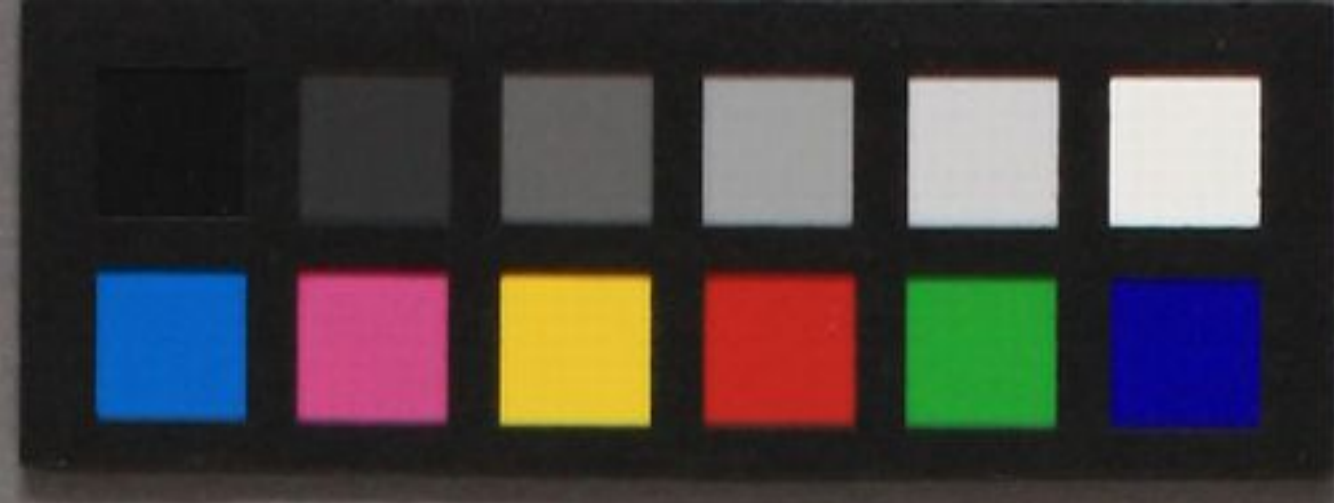




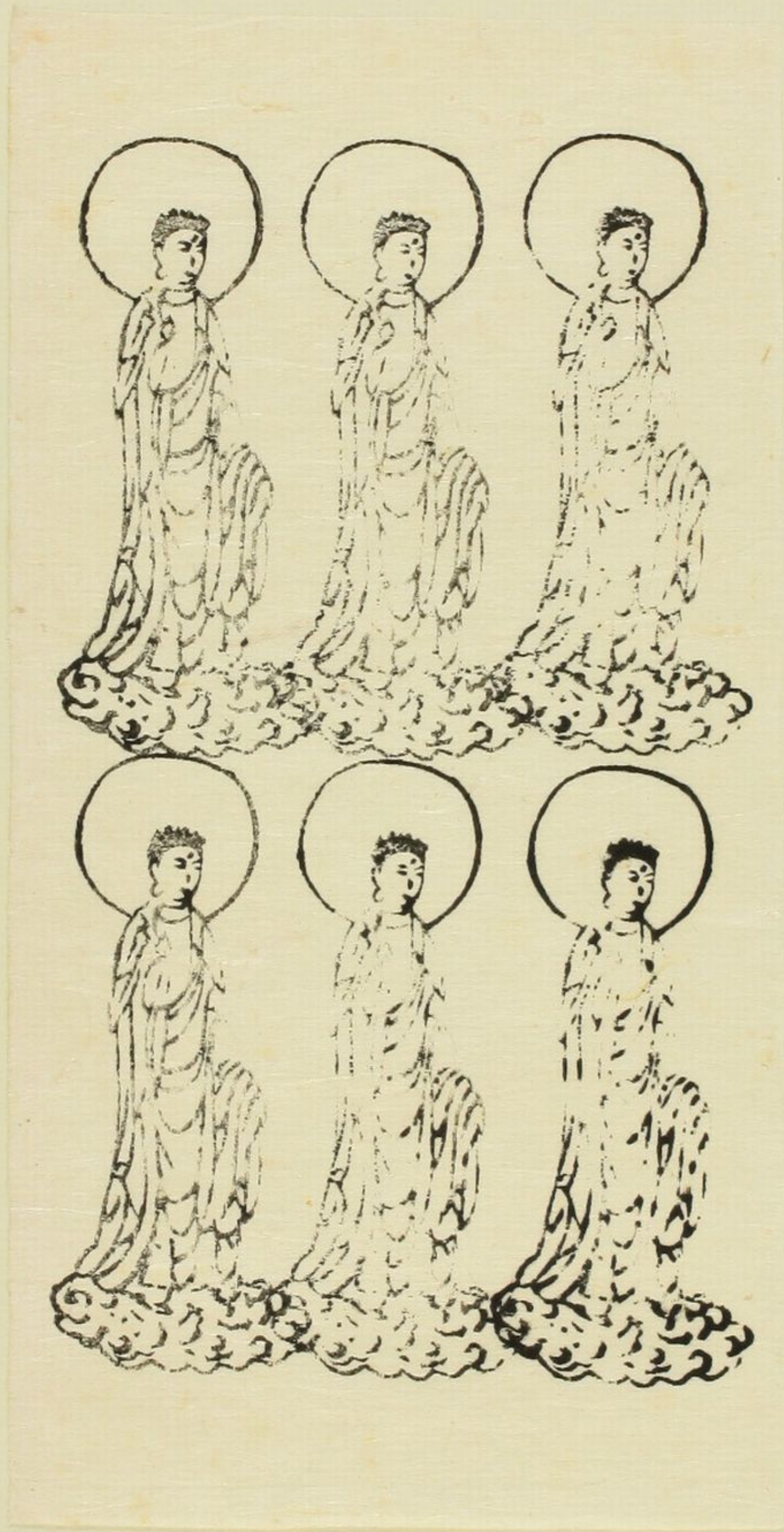
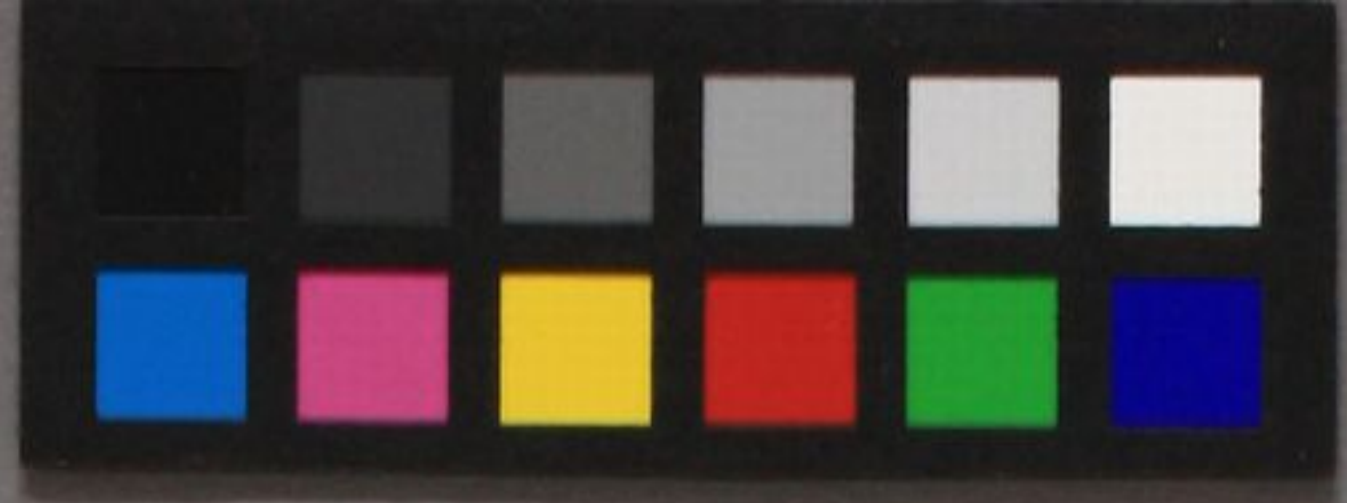








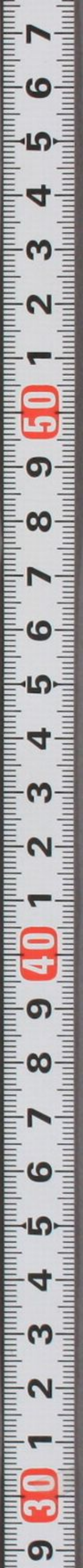
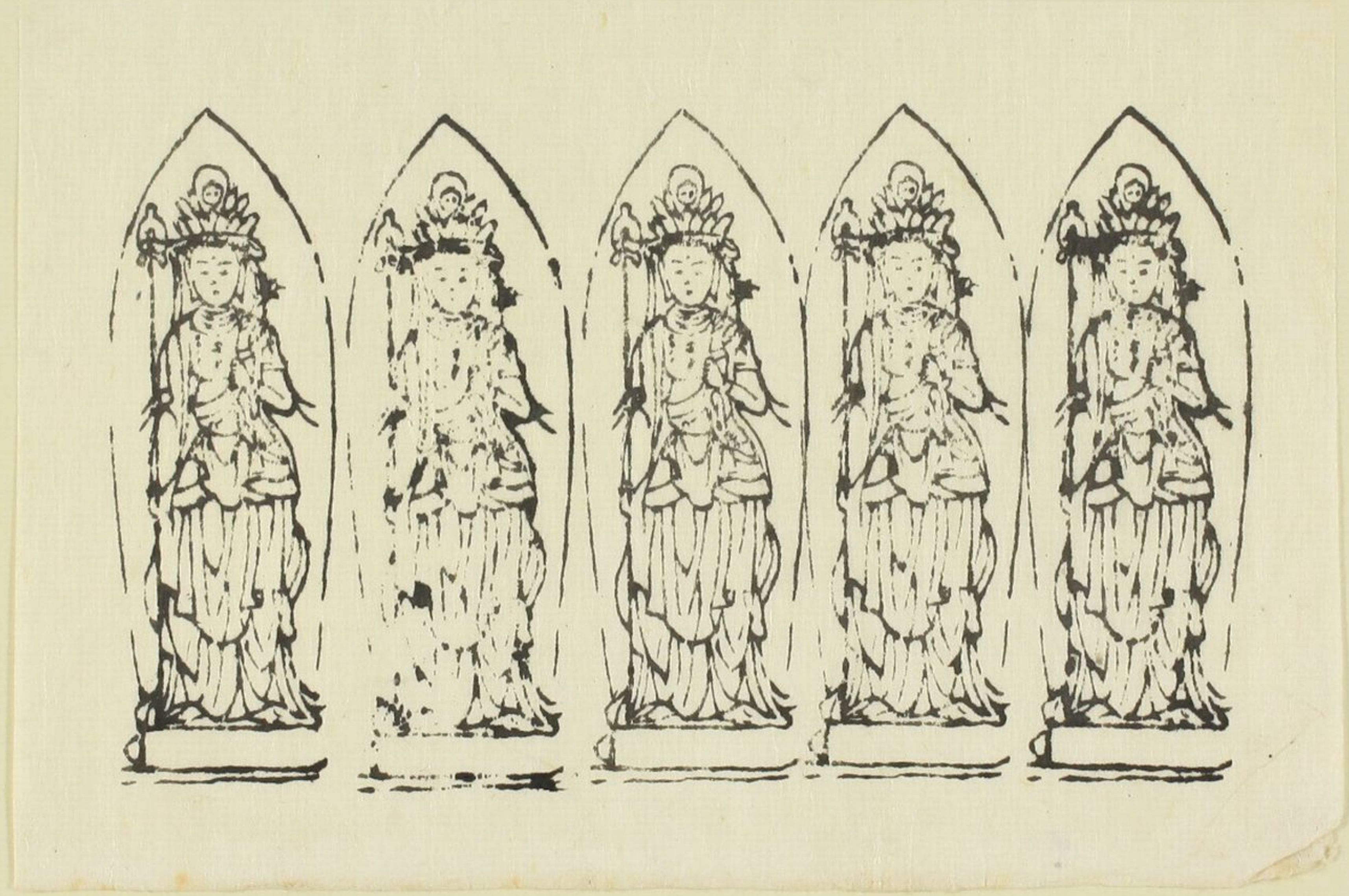


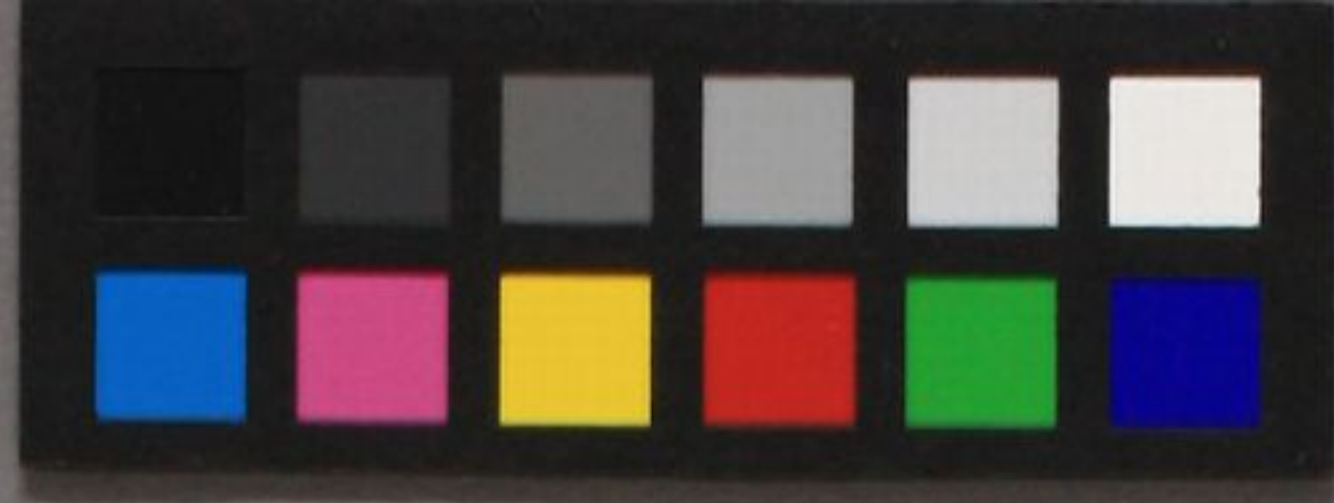














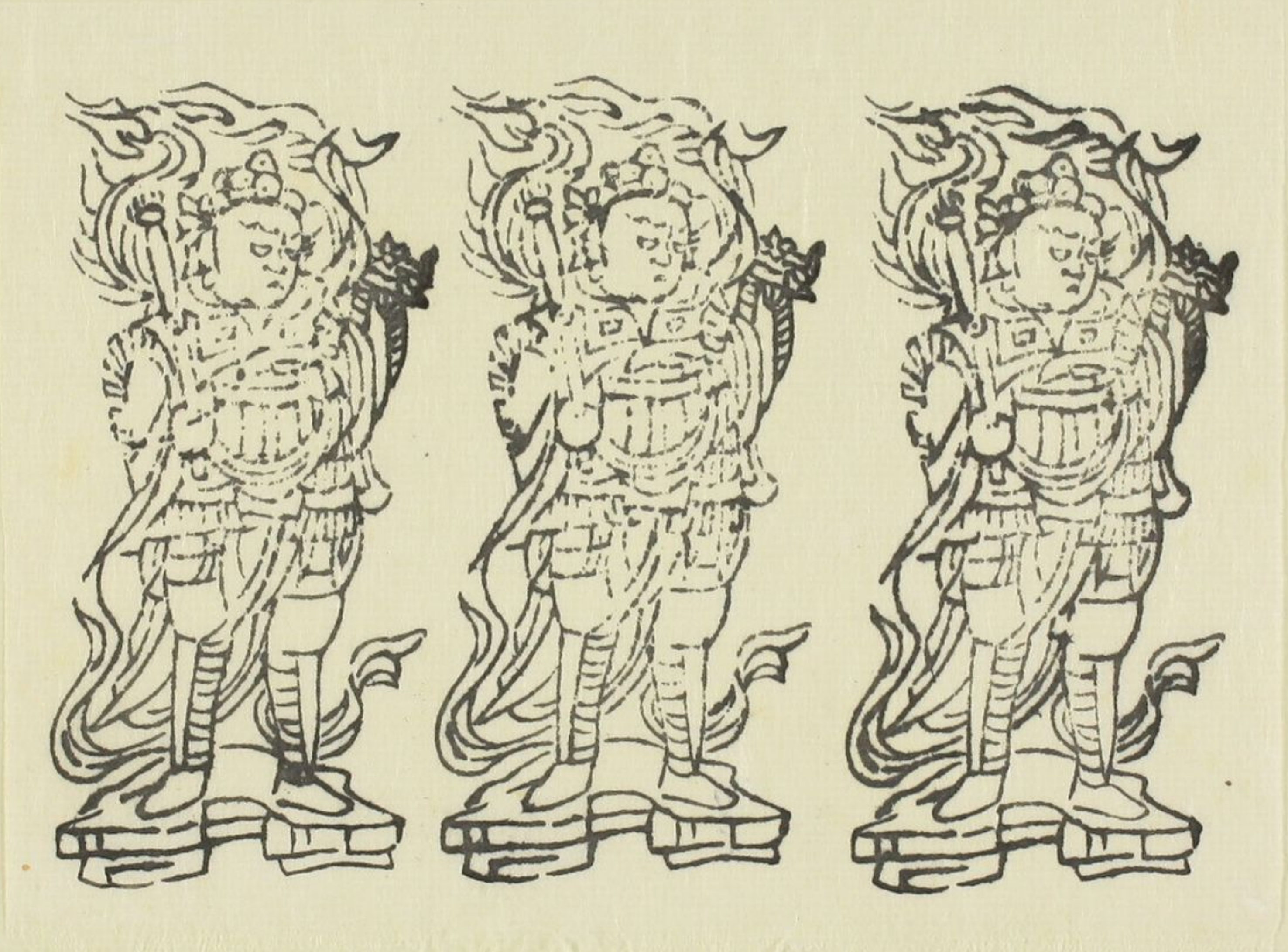










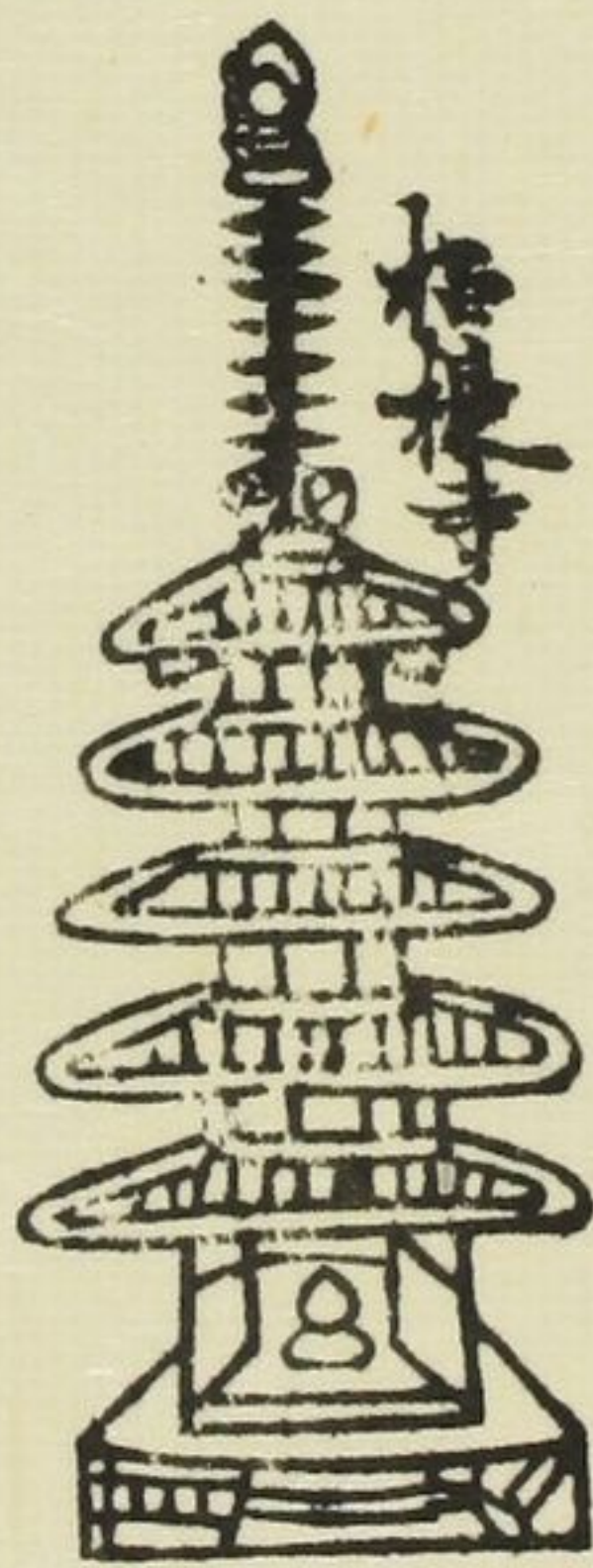






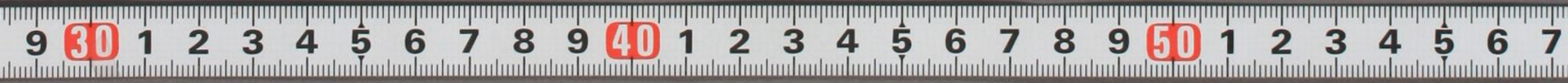
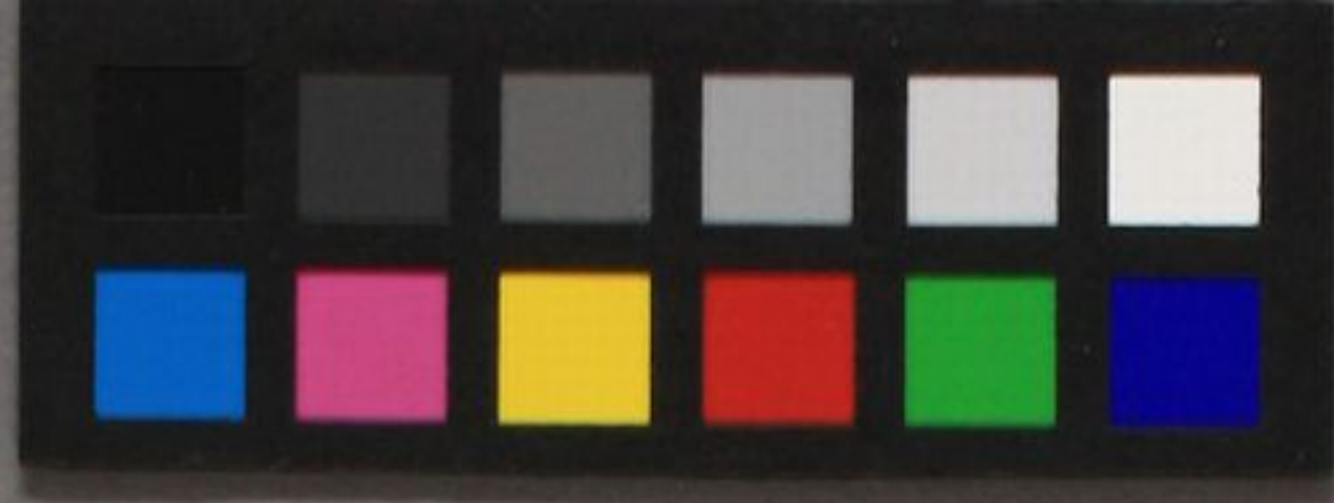




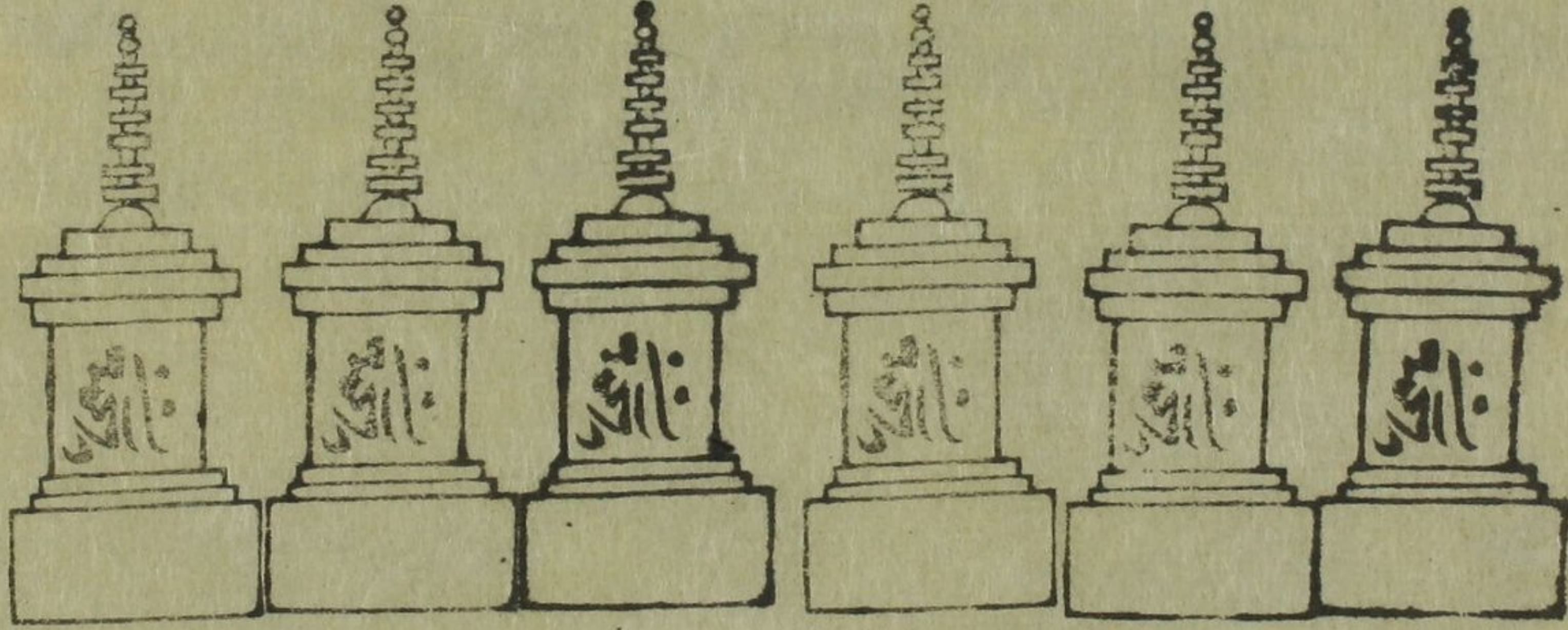


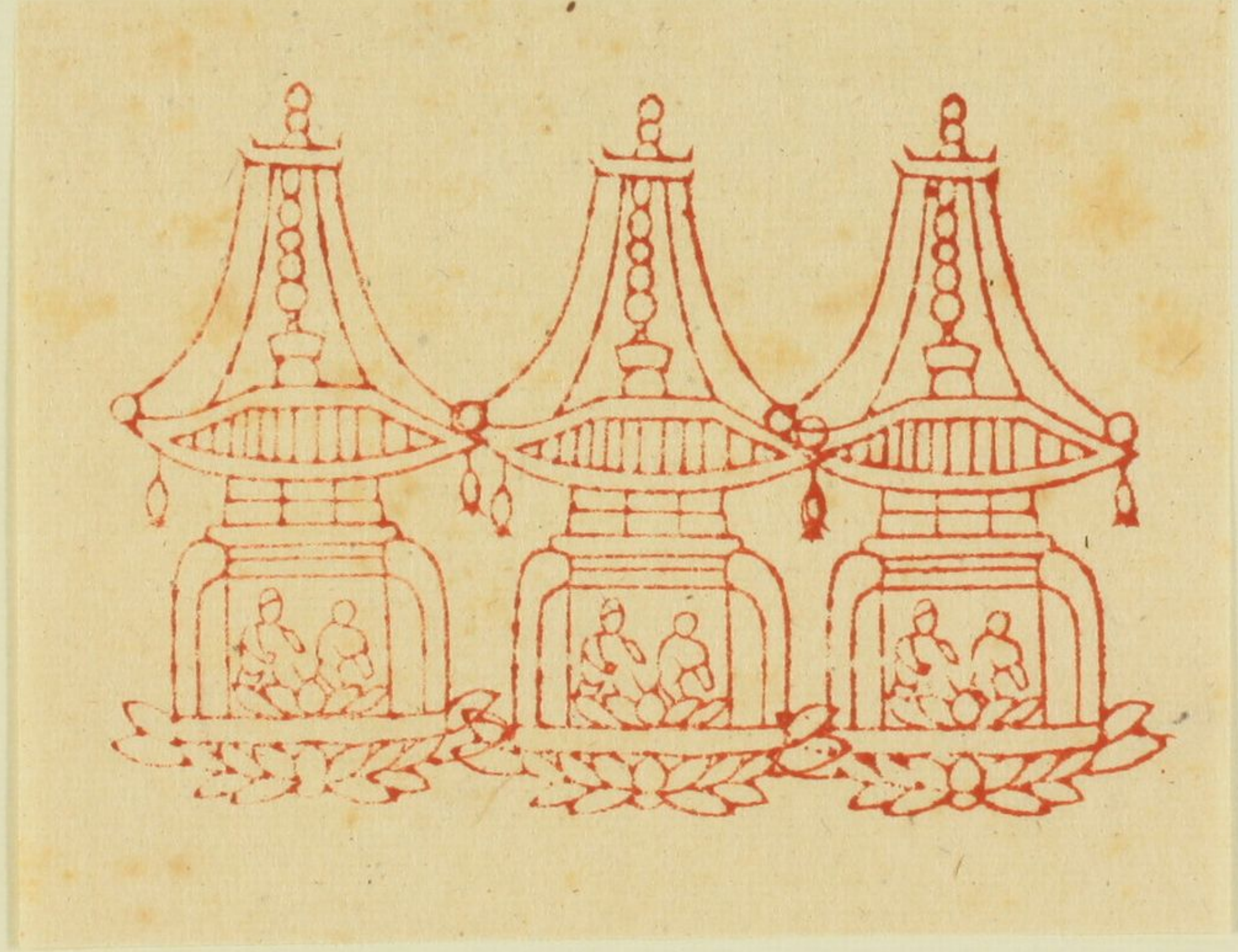


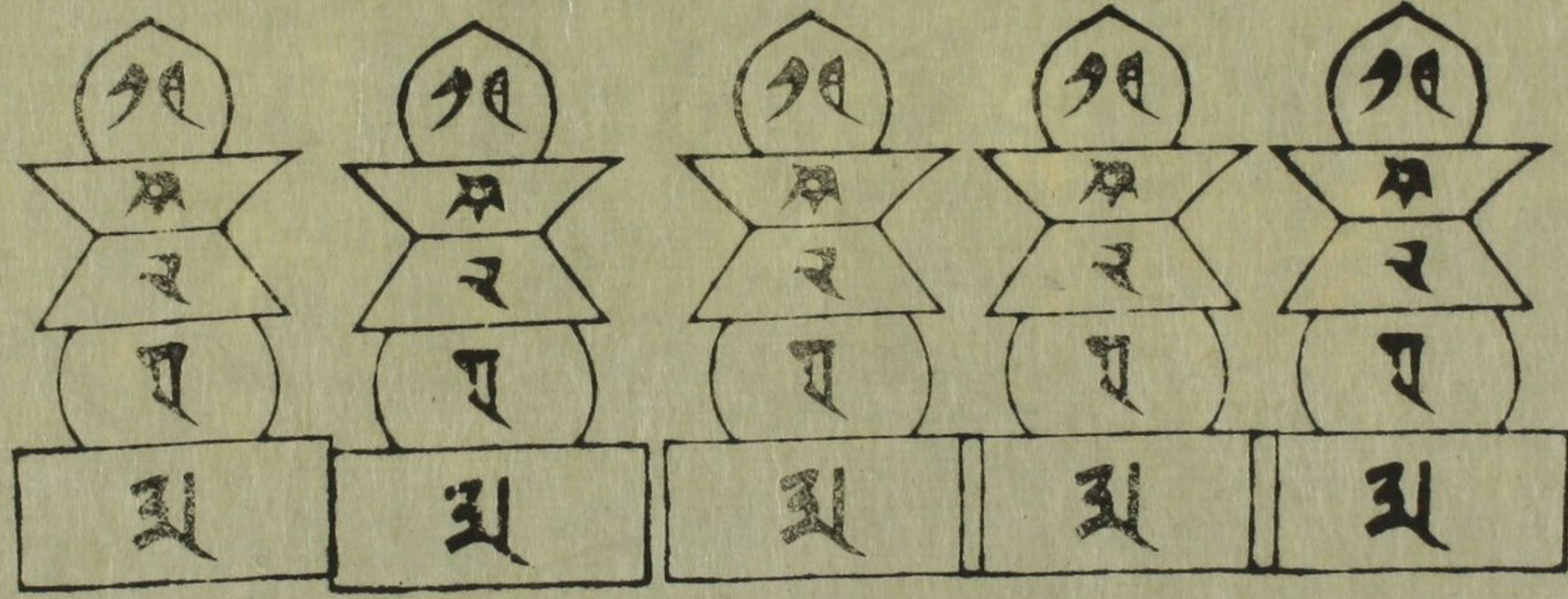














招提寺  
三月六日金堂  
供養用途一休



















