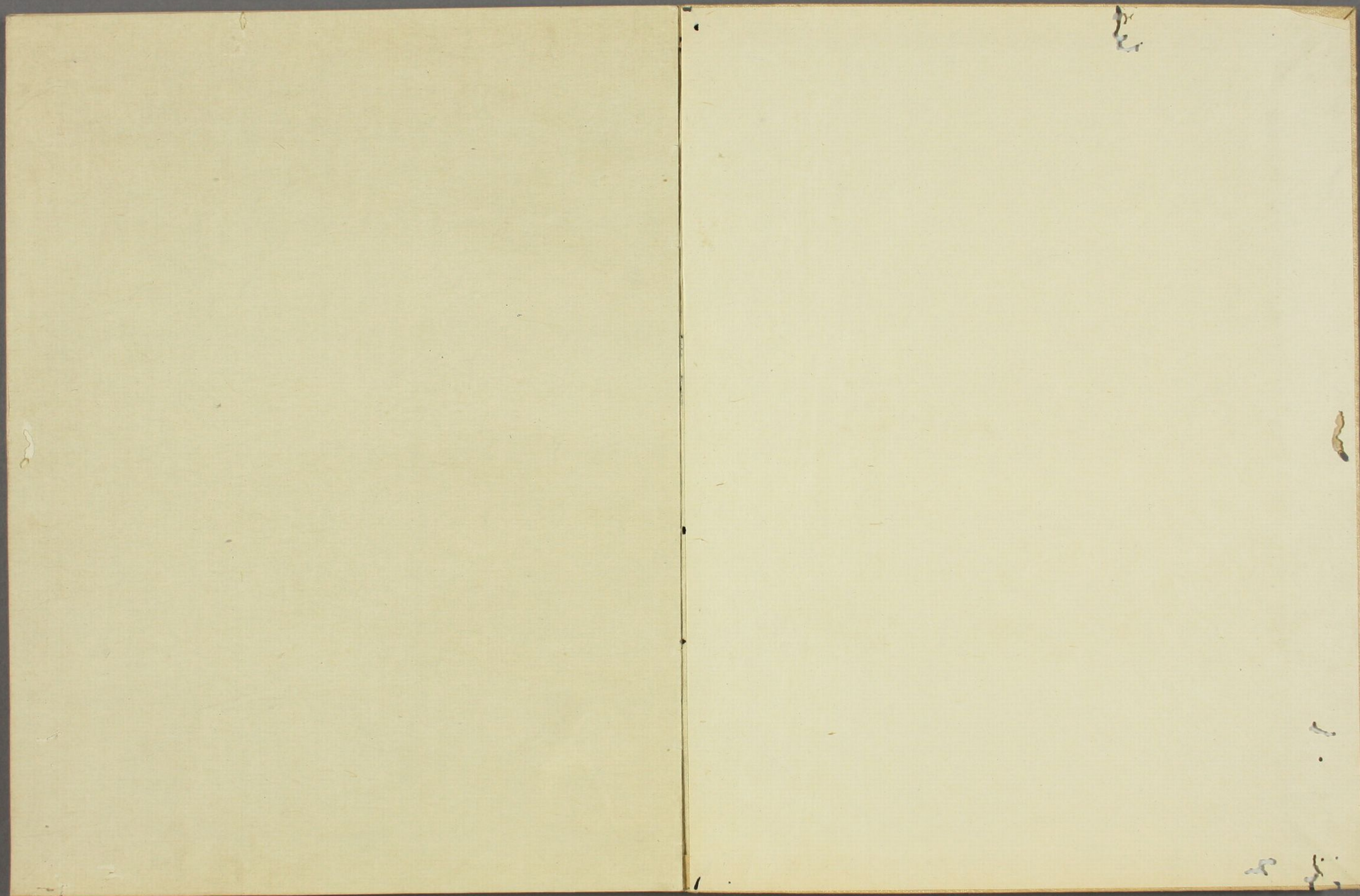




うたはな物語
夏原の巻





Handwritten text in a cursive script, likely a form of Arabic or Persian calligraphy, consisting of approximately 12 lines of text.



Handwritten text in cursive script, likely a list or account, written on the left page of the manuscript. The text is arranged in approximately 10 horizontal lines, starting with a small decorative flourish at the top left. The script is dense and consistent throughout the page.

Handwritten text in cursive script, continuing the list or account from the left page, written on the right page of the manuscript. The text is arranged in approximately 10 horizontal lines, maintaining the same dense, consistent cursive style as the left page.

Handwritten text in a cursive script, likely a letter or document, spanning the left page of the manuscript.

Handwritten text in a cursive script, likely a letter or document, spanning the right page of the manuscript.

Handwritten text in cursive script, consisting of approximately 12 lines of text.

Handwritten text in cursive script, consisting of approximately 12 lines of text.

My dear sister, I have just received your
kind letter and was so glad to hear from
you. I am well and hope these few lines
will find you the same. I am thinking
of you very much and wish I could
write to you more often. I hope you
will write to me soon. I am
yours affectionately,
Sister

I hope you are well and happy. I
am thinking of you very much and
wish I could see you soon. I am
yours affectionately,
Sister

Handwritten text in a cursive script, likely a list or account. The text is written in a fluid, connected style with many loops and flourishes. It appears to be a list of items or names, possibly in a historical or administrative context. The script is dense and fills most of the page.

Handwritten text in a cursive script, continuing from the previous page. The text is written in a fluid, connected style with many loops and flourishes. It appears to be a list of items or names, possibly in a historical or administrative context. The script is dense and fills most of the page.

Handwritten text in a cursive script, likely a form of shorthand or a specific dialect. The text is arranged in approximately 10 horizontal lines across the page.

Handwritten text in a cursive script, continuing from the previous page. The text is arranged in approximately 10 horizontal lines across the page.

Handwritten text in a cursive script, likely a letter or document, written on the left page of an open manuscript. The text is arranged in approximately 12 horizontal lines, flowing from right to left across the page. The ink is dark and the script is highly stylized and connected.

Handwritten text in a cursive script, likely a letter or document, written on the right page of an open manuscript. The text is arranged in approximately 12 horizontal lines, flowing from right to left across the page. The ink is dark and the script is highly stylized and connected.

Handwritten text in a cursive script, likely a letter or a page from a manuscript. The text is written in a fluid, connected style across ten lines.

Handwritten text in a cursive script, continuing from the previous page. The text is written in a fluid, connected style across ten lines.

Handwritten text in a cursive script, likely a personal letter or diary entry, spanning the left page of the notebook. The text is written in a fluid, connected style with varying line heights and some decorative flourishes.

Handwritten text in a cursive script, continuing from the left page or as a separate entry, spanning the right page of the notebook. The handwriting is consistent with the left page, showing a high level of fluency and personal style.

Handwritten text in a cursive script, likely a personal letter or diary entry. The text is written in a fluid, connected style across approximately 10 lines.

Handwritten text in a cursive script, continuing from the previous page. The text is written in a fluid, connected style across approximately 10 lines.

Handwritten text in cursive script, likely a list or account. The text is written in a fluid, connected style. It appears to be a list of items or entries, possibly related to a ledger or inventory. The entries are separated by small gaps and some have decorative flourishes. The text is written in black ink on aged, yellowish paper.

Handwritten text in cursive script, continuing the list or account from the previous page. The text is written in a fluid, connected style. It appears to be a list of items or entries, possibly related to a ledger or inventory. The entries are separated by small gaps and some have decorative flourishes. The text is written in black ink on aged, yellowish paper.

Handwritten text in a cursive script, likely a letter or document, written on the left page of an open notebook. The text is dense and fills most of the page.

Handwritten text in a cursive script, likely a letter or document, written on the right page of an open notebook. The text is dense and fills most of the page.

Handwritten text in a cursive script, likely a letter or document, written on the left page of an open manuscript. The text is dense and fills most of the page.

Handwritten text in a cursive script, likely a letter or document, written on the right page of an open manuscript. The text is dense and fills most of the page.

Handwritten text in a cursive script, likely a personal letter or diary entry. The text is written in a fluid, connected style across approximately 12 lines. The ink is dark and the paper shows signs of age.

Handwritten text in a cursive script, continuing from the previous page. The text is written in a fluid, connected style across approximately 12 lines. The ink is dark and the paper shows signs of age.

Handwritten text in a cursive script, likely a letter or a page from a manuscript. The text is written in a fluid, connected style across several lines.

Handwritten text in a cursive script, continuing from the previous page. The text is written in a fluid, connected style across several lines.

Handwritten text in cursive script, likely a letter or document, written on the left page of an open book. The text is dense and fills most of the page.

Handwritten text in cursive script, likely a letter or document, written on the right page of an open book. The text is dense and fills most of the page.

بسم الله الرحمن الرحيم

الحمد لله

الذي هدانا لهذا الذي كنا لنهتدي لولا أن هدانا الله

والحمد لله رب العالمين

والصلاة والسلام على من لا نبي بعده

وبعد فقد حضر في هذا المجلس

الذي أقيم في يوم الاثنين الموافق

للعاشرة من شهر ربيع الأول سنة

١٤٢٥ هـ

الحاضر من أعضاء المجلس

السيد / محمد بن عبد الله بن محمد

السيد / أحمد بن محمد بن أحمد

السيد / علي بن محمد بن علي

السيد / فهد بن محمد بن فهد

السيد / خالد بن محمد بن خالد

السيد / ياسر بن محمد بن ياسر

السيد / أيمن بن محمد بن أيمن

السيد / طارق بن محمد بن طارق

السيد / هادي بن محمد بن هادي

السيد / مكي بن محمد بن مكي

Handwritten text in a cursive script, likely a letter or a page from a manuscript. The text is written in a fluid, connected style across several lines.

Handwritten text in a cursive script, continuing from the previous page. The text is written in a fluid, connected style across several lines.

Handwritten text in a cursive script, likely a form of shorthand or a specific dialect. The text is arranged in approximately 12 horizontal lines across the page.

Handwritten text in a cursive script, likely a form of shorthand or a specific dialect. The text is arranged in approximately 12 horizontal lines across the page.

Handwritten musical notation on the left page, consisting of a single staff with a treble clef and a key signature of one flat. The notation is written in a cursive, handwritten style, featuring various note values, rests, and bar lines. The music appears to be a single melodic line.

Handwritten musical notation on the right page, consisting of a single staff with a treble clef and a key signature of one flat. The notation is written in a cursive, handwritten style, featuring various note values, rests, and bar lines. The music appears to be a single melodic line.

Handwritten text in a cursive script, likely a form of shorthand or a specific dialect. The text is arranged in approximately 10 horizontal lines across the page.

Handwritten text in a cursive script, likely a form of shorthand or a specific dialect. The text is arranged in approximately 10 horizontal lines across the page.

Handwritten text in Arabic script, consisting of approximately 11 lines of dense, cursive writing.

Handwritten text in Arabic script, consisting of approximately 11 lines of dense, cursive writing.

Handwritten text in a cursive script, likely a personal letter or diary entry. The text is written in a fluid, connected style across approximately 12 lines.

Handwritten text in a cursive script, continuing from the previous page. The text is written in a fluid, connected style across approximately 12 lines.

Handwritten text in a cursive script, likely a historical document or letter. The text is written in a dark ink on aged paper. The script is highly stylized and difficult to decipher without a key. The text is arranged in approximately 12 lines across the page.

Handwritten text in a cursive script, likely a historical document or letter. The text is written in a dark ink on aged paper. The script is highly stylized and difficult to decipher without a key. The text is arranged in approximately 12 lines across the page.

Handwritten text in cursive script, likely a list or account. The text is written in a fluid, connected style with many loops and flourishes. It appears to be a list of items or a record of transactions, possibly in a historical or administrative context. The ink is dark and the paper is aged and slightly yellowed.

Handwritten text in cursive script, continuing from the previous page. The text is written in a fluid, connected style with many loops and flourishes. It appears to be a list of items or a record of transactions, possibly in a historical or administrative context. The ink is dark and the paper is aged and slightly yellowed.

Handwritten text in cursive script, likely a letter or document, written on the left page of the manuscript.

Handwritten text in cursive script, likely a letter or document, written on the right page of the manuscript.

Handwritten text in cursive script, likely a list or series of entries, spanning the left page of the notebook.

Handwritten text in cursive script, continuing the list or series of entries from the left page, spanning the right page of the notebook.

Handwritten text in a cursive script, likely a letter or document, spanning the left page of the notebook. The text is written in dark ink on aged, yellowish paper. It consists of approximately 12 lines of text, starting with a large initial letter 'D' and ending with a flourish.

Handwritten text in a cursive script, likely a letter or document, spanning the right page of the notebook. The text is written in dark ink on aged, yellowish paper. It consists of approximately 12 lines of text, starting with a large initial letter 'D' and ending with a flourish.

Handwritten text in a cursive script, likely a historical document or letter. The text is written in a dark ink on aged paper. The script is highly stylized and difficult to decipher without a key. The text is arranged in approximately 12 lines across the page.

Handwritten text in a cursive script, likely a historical document or letter. The text is written in a dark ink on aged paper. The script is highly stylized and difficult to decipher without a key. The text is arranged in approximately 12 lines across the page.

Handwritten text in a cursive script, likely a form of shorthand or a specific dialect. The text is arranged in approximately 10 horizontal lines across the page.

Handwritten text in a cursive script, likely a form of shorthand or a specific dialect. The text is arranged in approximately 10 horizontal lines across the page.

Handwritten musical notation on the left page, consisting of a single staff with a treble clef and a key signature of one flat. The notation is written in a cursive style, featuring various note values and rests.

Handwritten musical notation on the right page, consisting of a single staff with a treble clef and a key signature of one flat. The notation is written in a cursive style, featuring various note values and rests.

Handwritten text in cursive script, likely a letter or document, spanning the left page of the manuscript.

Handwritten text in cursive script, likely a letter or document, spanning the right page of the manuscript.

Handwritten text in a cursive script, likely a historical document or letter. The text is written in a dark ink on aged paper. The script is highly stylized and difficult to decipher without a key. The text appears to be a single paragraph or a short letter, starting with a large initial letter. The lines are somewhat irregular, suggesting a handwritten style. The text is written in a cursive script, likely a historical document or letter. The text is written in a dark ink on aged paper. The script is highly stylized and difficult to decipher without a key. The text appears to be a single paragraph or a short letter, starting with a large initial letter. The lines are somewhat irregular, suggesting a handwritten style.

Handwritten text in a cursive script, likely a historical document or letter. The text is written in a dark ink on aged paper. The script is highly stylized and difficult to decipher without a key. The text appears to be a single paragraph or a short letter, starting with a large initial letter. The lines are somewhat irregular, suggesting a handwritten style. The text is written in a cursive script, likely a historical document or letter. The text is written in a dark ink on aged paper. The script is highly stylized and difficult to decipher without a key. The text appears to be a single paragraph or a short letter, starting with a large initial letter. The lines are somewhat irregular, suggesting a handwritten style.

Handwritten text in cursive script, likely a letter or document, written on the left page of an open notebook. The text is dense and fills most of the page.

Handwritten text in cursive script, likely a letter or document, written on the right page of an open notebook. The text is dense and fills most of the page.

Handwritten text in a cursive script, likely a letter or a page from a manuscript. The text is written in a fluid, connected style across approximately 12 lines.

Handwritten text in a cursive script, continuing from the previous page. The text is written in a fluid, connected style across approximately 12 lines.

Handwritten text in a cursive script, likely a personal letter or diary entry. The text is written in dark ink on aged paper. The script is highly stylized and difficult to decipher, but appears to be a continuous flow of words. The lines are roughly horizontal and fill most of the page.

Handwritten text in a cursive script, continuing from the previous page. The text is written in dark ink on aged paper. The script is highly stylized and difficult to decipher, but appears to be a continuous flow of words. The lines are roughly horizontal and fill most of the page.

وَمِنْهُمْ مَن يَخُصُّكَ
بِغَيْرِ حَقٍّ عَلَيْهِمْ
ذَلِكَ وَهُوَ يُخَالِفُ
كَرِهًا لَهُمْ أَفَ يُعَذِّبُهُم
بِمَا كَانُوا يَعْمَلُونَ
وَمِنْهُمْ مَن يَخُصُّكَ
بِغَيْرِ حَقٍّ عَلَيْهِمْ
ذَلِكَ وَهُوَ يُخَالِفُ
كَرِهًا لَهُمْ أَفَ يُعَذِّبُهُم
بِمَا كَانُوا يَعْمَلُونَ

وَمِنْهُمْ مَن يَخُصُّكَ
بِغَيْرِ حَقٍّ عَلَيْهِمْ
ذَلِكَ وَهُوَ يُخَالِفُ
كَرِهًا لَهُمْ أَفَ يُعَذِّبُهُم
بِمَا كَانُوا يَعْمَلُونَ
وَمِنْهُمْ مَن يَخُصُّكَ
بِغَيْرِ حَقٍّ عَلَيْهِمْ
ذَلِكَ وَهُوَ يُخَالِفُ
كَرِهًا لَهُمْ أَفَ يُعَذِّبُهُم
بِمَا كَانُوا يَعْمَلُونَ

Handwritten text in a cursive script, likely a form of Urdu or Persian, consisting of approximately 12 lines of text.

Handwritten text in a cursive script, likely a form of Urdu or Persian, consisting of approximately 12 lines of text.

Handwritten text in a cursive script, likely a historical document or letter. The text is written in a dark ink on aged paper. It begins with a large initial letter, possibly 'M', followed by several lines of text. The script is highly stylized and characteristic of the Ottoman or Persian calligraphic tradition.

Handwritten text in a cursive script, continuing from the previous page. The text is written in a dark ink on aged paper. It begins with a large initial letter, possibly 'M', followed by several lines of text. The script is highly stylized and characteristic of the Ottoman or Persian calligraphic tradition.

Handwritten text in a cursive script, likely a letter or document, written on the left page of an open notebook. The text is arranged in approximately 12 lines, starting from the top left and moving downwards. The ink is dark, and the paper shows some signs of age and wear.

Handwritten text in a cursive script, likely a letter or document, written on the right page of an open notebook. The text is arranged in approximately 12 lines, starting from the top left and moving downwards. The ink is dark, and the paper shows some signs of age and wear.

Handwritten text in Urdu script, consisting of approximately 12 lines of cursive writing.

Handwritten text in Urdu script, consisting of approximately 12 lines of cursive writing.

Handwritten text in a cursive script, likely a letter or a page from a manuscript. The text is written in a fluid, connected style with many loops and flourishes. It appears to be a single paragraph of text.

Handwritten text in a cursive script, continuing from the previous page. The text is written in a fluid, connected style with many loops and flourishes. It appears to be a single paragraph of text.

Handwritten text in a cursive script, likely a letter or document, spanning the left page of the manuscript. The text is written in a fluid, connected style with various flourishes and ascenders.

Handwritten text in a cursive script, likely a letter or document, spanning the right page of the manuscript. The text continues from the left page, maintaining the same fluid, connected style.

Handwritten text in a cursive script, likely a form of shorthand or a specific dialect. The text is arranged in approximately 12 horizontal lines across the page.

Handwritten text in a cursive script, likely a form of shorthand or a specific dialect. The text is arranged in approximately 12 horizontal lines across the page.

Handwritten text in a cursive script, likely a historical document or letter. The text is written in a dark ink on aged paper. It consists of approximately 12 lines of text, starting with a large initial letter 'S' and ending with a period. The script is highly stylized and characteristic of the early modern period.

Handwritten text in a cursive script, likely a historical document or letter. The text is written in a dark ink on aged paper. It consists of approximately 12 lines of text, starting with a large initial letter 'S' and ending with a period. The script is highly stylized and characteristic of the early modern period.

Handwritten text in a cursive script, likely a form of shorthand or a specific dialect. The text is arranged in approximately 12 horizontal lines across the page.

Handwritten text in a cursive script, continuing from the previous page. The text is arranged in approximately 12 horizontal lines across the page.

Handwritten text in a cursive script, likely a letter or a page from a manuscript. The text is written in a fluid, connected style across approximately 12 lines.

Handwritten text in a cursive script, likely a letter or a page from a manuscript. The text is written in a fluid, connected style across approximately 12 lines.

Handwritten text in a cursive script, likely a form of Urdu or Persian, consisting of approximately 12 lines of text.

Handwritten text in a cursive script, likely a form of Urdu or Persian, consisting of approximately 12 lines of text.

Handwritten text in a cursive script, likely a historical document or letter. The text is written in a dark ink on aged, yellowish paper. It consists of approximately 12 lines of text, starting with a large initial letter 'S' and ending with a period. The script is highly stylized and characteristic of the 17th or 18th century.

Handwritten text in a cursive script, likely a historical document or letter. The text is written in a dark ink on aged, yellowish paper. It consists of approximately 12 lines of text, starting with a large initial letter 'S' and ending with a period. The script is highly stylized and characteristic of the 17th or 18th century.

Handwritten text in a cursive script, likely a form of shorthand or a specific dialect. The text is arranged in approximately 12 horizontal lines across the page.

Handwritten text in a cursive script, likely a form of shorthand or a specific dialect. The text is arranged in approximately 12 horizontal lines across the page.

Handwritten text in a cursive script, likely a letter or document, written on the left page of an open book. The text is arranged in approximately 10 horizontal lines, flowing from right to left across the page. The ink is dark and the paper shows signs of age.

Handwritten text in a cursive script, likely a letter or document, written on the right page of an open book. The text is arranged in approximately 10 horizontal lines, flowing from right to left across the page. The ink is dark and the paper shows signs of age.

Handwritten text in a cursive script, likely a form of Urdu or Persian, consisting of approximately 12 lines of text.

Handwritten text in a cursive script, likely a form of Urdu or Persian, consisting of approximately 12 lines of text.

سورة الفاتحة
بسم الله الرحمن الرحيم
الحمد لله رب العالمين
الذي هدانا لهذا
ما كنا لنهتدي لولا
هدى الله لنا
ولا لولا فضل
الله العظيم
والعظيم
والعظيم

الحمد لله رب العالمين
الذي هدانا لهذا
ما كنا لنهتدي لولا
هدى الله لنا
ولا لولا فضل
الله العظيم
والعظيم
والعظيم

الحمد لله رب العالمين
الذي هدانا لهذا
ما كنا لنهتدي لولا
هدى الله لنا
ولا لولا فضل
الله العظيم
والعظيم
والعظيم

Handwritten text in a cursive script, likely a form of shorthand or a specific dialect. The text is arranged in approximately 10 horizontal lines across the page.

Handwritten text in a cursive script, continuing from the previous page. The text is arranged in approximately 10 horizontal lines across the page.

Handwritten text in a cursive script, likely a historical document or letter, written on the left page of an open manuscript. The text is arranged in approximately 12 horizontal lines, flowing from right to left across the page.

Handwritten text in a cursive script, likely a historical document or letter, written on the right page of an open manuscript. The text is arranged in approximately 12 horizontal lines, flowing from right to left across the page.

Handwritten text in a cursive script, likely a historical document or letter, spanning the left page of the manuscript.

Handwritten text in a cursive script, likely a historical document or letter, spanning the right page of the manuscript.

Handwritten text in a cursive script, likely a form of shorthand or a specific dialect. The text is arranged in approximately 12 horizontal lines across the page.

Handwritten text in a cursive script, likely a form of shorthand or a specific dialect. The text is arranged in approximately 12 horizontal lines across the page.

Handwritten text in a cursive script, likely Urdu or Persian, consisting of approximately 12 lines of text.

Handwritten text in a cursive script, likely Urdu or Persian, consisting of approximately 12 lines of text.

Handwritten text in a cursive script, likely a list or account. The text is written in a dark ink on aged paper. The lines are roughly horizontal and contain various characters and symbols, including what appears to be a large 'S' or 'C' at the beginning of the first line, and a large 'D' at the beginning of the second line. The script is highly stylized and difficult to decipher.



Handwritten text in a cursive script, continuing the list or account from the top page. The text is written in a dark ink on aged paper. The lines are roughly horizontal and contain various characters and symbols, including what appears to be a large 'S' or 'C' at the beginning of the first line, and a large 'D' at the beginning of the second line. The script is highly stylized and difficult to decipher.

Handwritten text in a cursive script, likely a historical document or manuscript. The text is written in a dark ink on aged, yellowish paper. The script is highly stylized and difficult to decipher, but appears to be a form of early modern European cursive. The text is arranged in several lines across the page, with some lines starting with a large initial letter. The overall appearance is that of a personal letter or a private record.

Handwritten text in a cursive script, consisting of several lines of text. The script is highly stylized and appears to be a form of shorthand or a specific dialect. The text is written on the left page of an open notebook.

Handwritten text in a cursive script, consisting of several lines of text. The script is highly stylized and appears to be a form of shorthand or a specific dialect. The text is written on the right page of an open notebook.

Handwritten text in cursive script, consisting of several lines of text.

Handwritten text in cursive script, consisting of several lines of text.

Handwritten text in cursive script, consisting of several lines of text.

Handwritten text in cursive script, consisting of several lines of text.

Handwritten text in a cursive script, likely a personal letter or diary entry. The text is written in a fluid, connected style across several lines.

Handwritten text in a cursive script, continuing from the previous page. The text is written in a fluid, connected style across several lines.

Handwritten text in a cursive script, likely a form or document, consisting of several lines of text.

Handwritten text in a cursive script, likely a form or document, consisting of several lines of text.

