

Handwritten text on the left label, likely in a non-Latin script, possibly Indic or Chinese characters.

Two red markings on the right label, which appear to be stylized characters or symbols.



Handwritten text in cursive script, consisting of approximately 15 lines.

相委

Handwritten text in cursive script, consisting of approximately 25 lines.

Handwritten text in cursive script, consisting of approximately 10 lines.

如仰 周社云夫人九嬪其七世婦八十一如所比三女九卿七大夫八十一元士

Handwritten text in cursive script, consisting of approximately 25 lines.

目下...

Handwritten text in cursive script, consisting of approximately 10 lines.

Handwritten text in cursive script, consisting of approximately 10 lines.

Handwritten text in cursive script, consisting of approximately 10 lines.

Handwritten text in a cursive script, likely representing a list or a series of entries.

Handwritten text, possibly a title or a section header, followed by several lines of cursive script.

Handwritten text, possibly a title or a section header, followed by several lines of cursive script.

Handwritten text, possibly a title or a section header, followed by several lines of cursive script.

Handwritten text, possibly a title or a section header, followed by several lines of cursive script.

Handwritten text, possibly a title or a section header, followed by several lines of cursive script.

Handwritten text, possibly a title or a section header, followed by several lines of cursive script.

Handwritten text, possibly a title or a section header, followed by several lines of cursive script.

Handwritten text, possibly a title or a section header, followed by several lines of cursive script.

Handwritten text, possibly a title or a section header, followed by several lines of cursive script.

Handwritten text, possibly a title or a section header, followed by several lines of cursive script.

Handwritten text, possibly a title or a section header, followed by several lines of cursive script.

Handwritten text, possibly a title or a section header, followed by several lines of cursive script.


~~~~~  
~~~~~  
~~~~~

~~~~~  
~~~~~  
~~~~~

~~~~~  
~~~~~  
~~~~~

~~~~~  
~~~~~  
~~~~~

~~~~~  
~~~~~  
~~~~~

鴻臚館

~~~~~  
~~~~~  
~~~~~

~~~~~  
~~~~~  
~~~~~

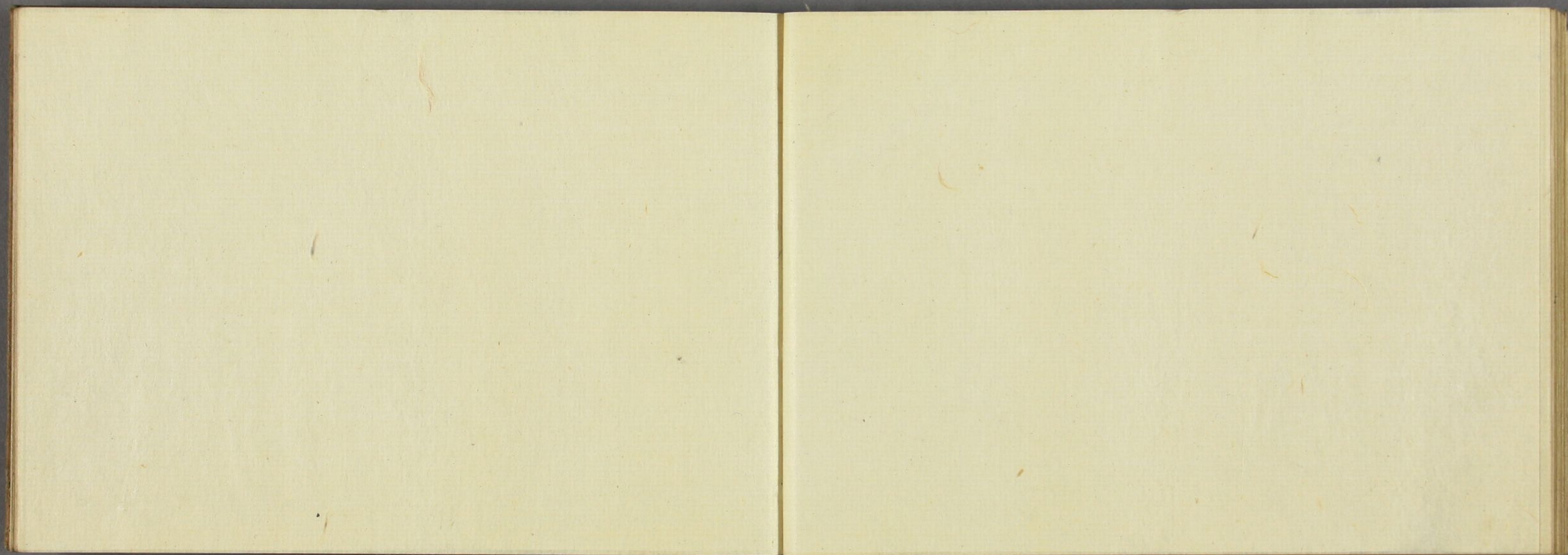
~~~~~  
~~~~~  
~~~~~

~~~~~  
~~~~~  
~~~~~

~~~~~  
~~~~~  
~~~~~

~~~~~  
~~~~~  
~~~~~





以下全て

白紙

葭  
沼  
居  
書