



柳川  
権左  
五郎

七篇上



七篇上





花鳥文様

七篇上

馬

馬





草冊子の作の博識の眼よりえられたるも胎裏とてあられど  
 吾儕の腸を絞て精根を堀ても此少の一篇全備うめて  
 凡そ隠て喘ぐも平生あり草冊子を嗜する人達も  
 亦情を通り拙作より泣かぬ笑かぬも有とて其の件の  
 苦心あり有て片想る世中あるか那さるる作者と雲顧君子の  
 一度對面せざれば此世ありぬ縁ありて離るぬ中の菜花よ  
 蝶の翅四片もまた菜花も亦四片ある造化の妙なり  
 此編も平素小蝶と秋津の事を古めかゝる綴りぬ

種彦自序



胡蝶の

まき

七ノ冊

しき



泰山府君



女  
花  
咲  
跡



山名陸丸門



Handwritten text in a cursive script, likely a form of shorthand or a specific dialect, located at the top of the right page.



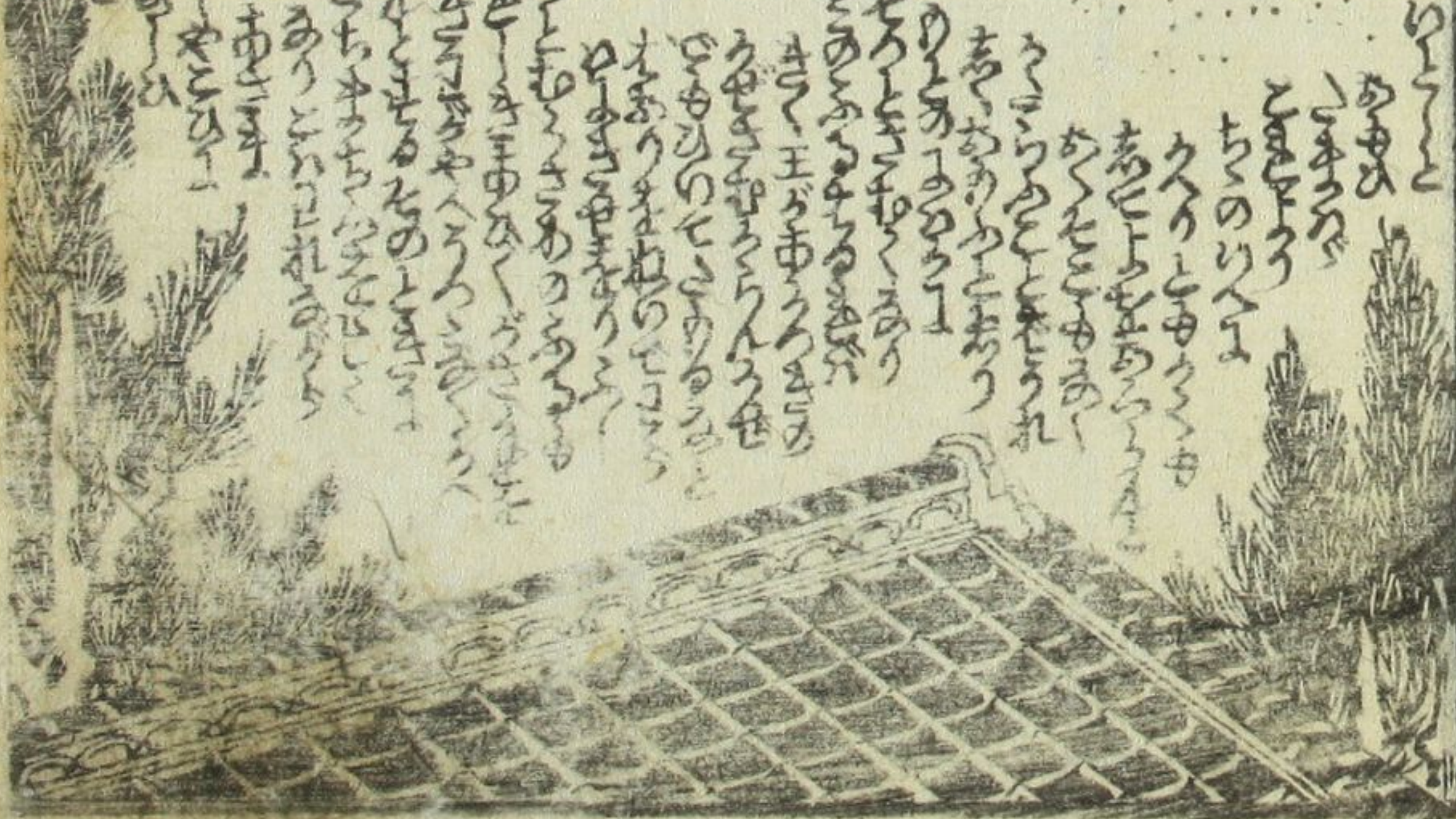
Handwritten text in a cursive script, located in the middle section of the right page, below the woman's illustration.



Handwritten text in a cursive script, located at the top of the left page.



Handwritten text in a cursive script, located in the middle section of the left page, below the dog's illustration.



Vertical handwritten text along the left margin of the left page.

Small handwritten text or a signature located at the bottom left of the left page.



Handwritten Japanese text in the upper left corner, including the characters '世' and '世'.

Handwritten Japanese text in the middle left area.

Large block of handwritten Japanese text at the bottom of the left page, arranged in vertical columns.



Vertical handwritten Japanese text on the right edge of the page.

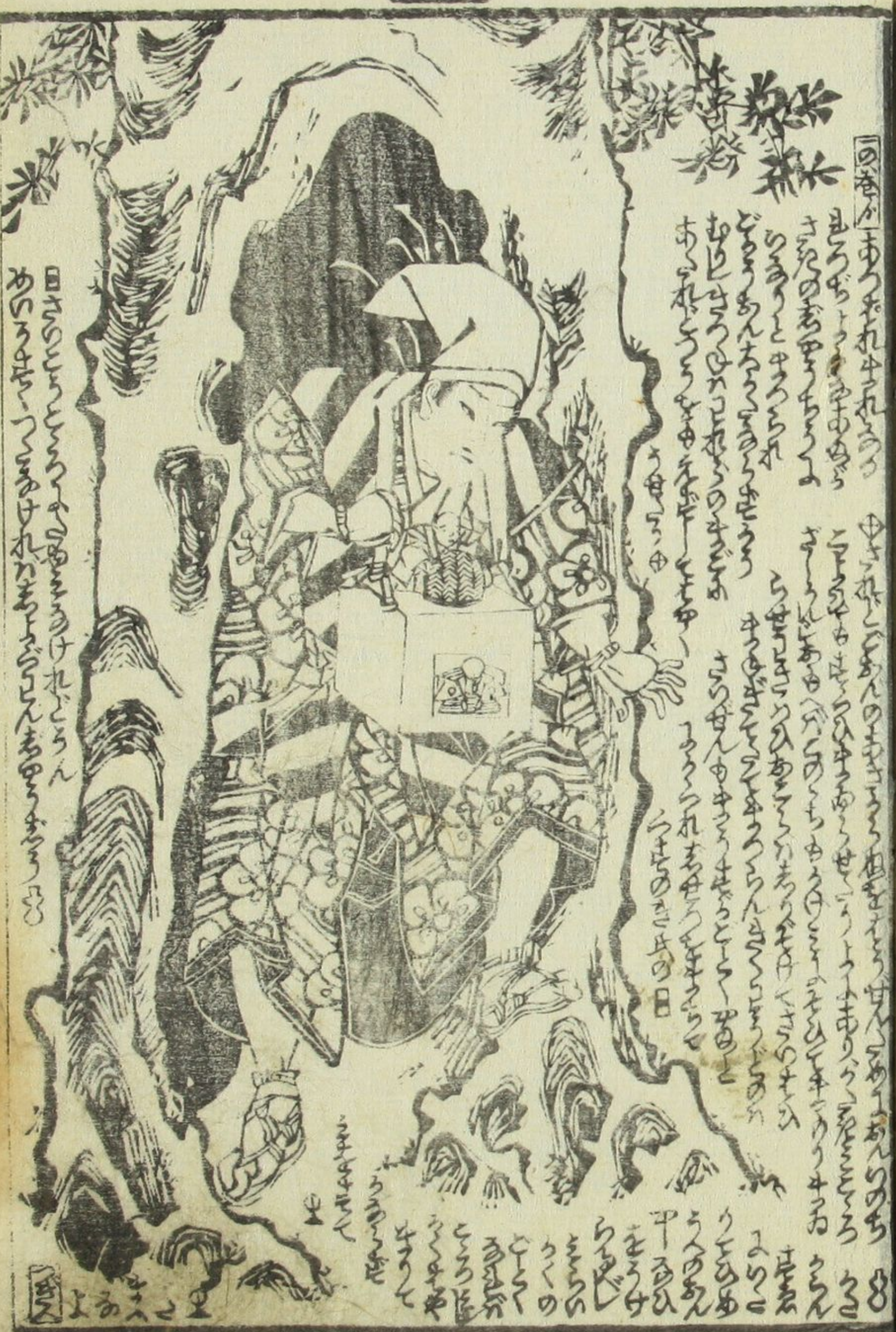
Large block of handwritten Japanese text at the bottom of the right page, arranged in vertical columns.



此の物語は  
 昔の事なり  
 今も昔も  
 変わらぬ  
 世の常なり  
 人の心なり  
 世の常なり  
 人の心なり  
 世の常なり  
 人の心なり

此の物語は  
 昔の事なり  
 今も昔も  
 変わらぬ  
 世の常なり  
 人の心なり  
 世の常なり  
 人の心なり

此の物語は  
 昔の事なり  
 今も昔も  
 変わらぬ  
 世の常なり  
 人の心なり  
 世の常なり  
 人の心なり



此の物語は  
 昔の事なり  
 今も昔も  
 変わらぬ  
 世の常なり  
 人の心なり  
 世の常なり  
 人の心なり

此の物語は  
 昔の事なり  
 今も昔も  
 変わらぬ  
 世の常なり  
 人の心なり  
 世の常なり  
 人の心なり

此の物語は  
 昔の事なり  
 今も昔も  
 変わらぬ  
 世の常なり  
 人の心なり  
 世の常なり  
 人の心なり

此の物語は  
 昔の事なり  
 今も昔も  
 変わらぬ  
 世の常なり  
 人の心なり  
 世の常なり  
 人の心なり

此の物語は  
 昔の事なり  
 今も昔も  
 変わらぬ  
 世の常なり  
 人の心なり  
 世の常なり  
 人の心なり

此の物語は  
 昔の事なり  
 今も昔も  
 変わらぬ  
 世の常なり  
 人の心なり  
 世の常なり  
 人の心なり

此の物語は  
 昔の事なり  
 今も昔も  
 変わらぬ  
 世の常なり  
 人の心なり  
 世の常なり  
 人の心なり





三在觀

察過指來現神通

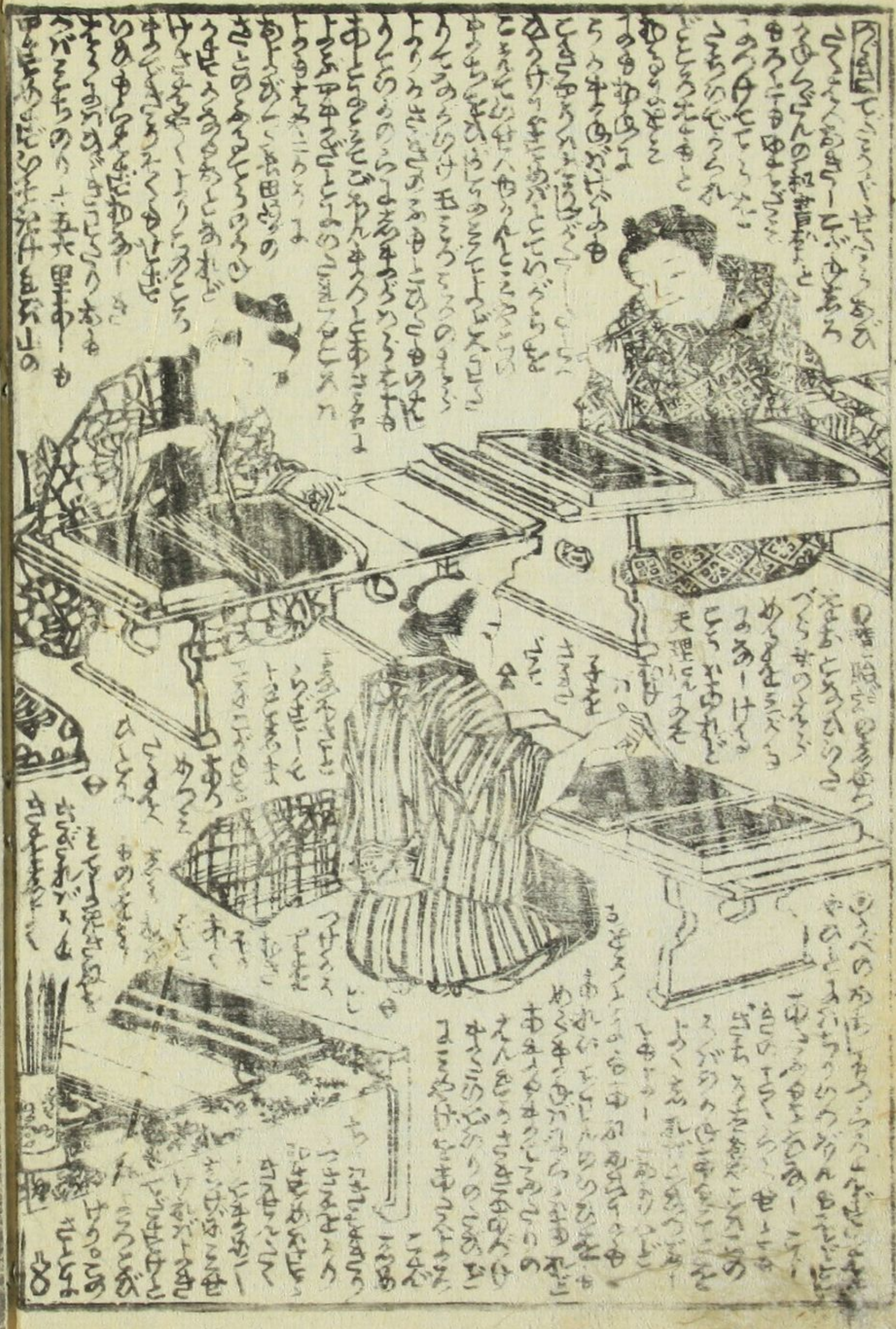


避凶招吉憑佛力



室町七





Vertical text on the far left edge of the page.

Vertical text block in the upper left corner of the illustration.

Vertical text block in the middle left of the illustration.

Vertical text block in the lower middle left of the illustration.

Vertical text block in the lower left of the illustration.

Vertical text block in the bottom left of the illustration.

Vertical text block at the bottom left corner of the illustration.

Vertical text block in the upper right of the illustration.

Vertical text block in the middle right of the illustration.

Vertical text block in the lower middle right of the illustration.

Vertical text block in the lower right of the illustration.

Vertical text block in the bottom right of the illustration.

Vertical text block at the bottom right corner of the illustration.

Vertical text block in the upper left of the illustration.

Vertical text block in the middle left of the illustration.

Vertical text block in the lower middle left of the illustration.

Vertical text block in the lower left of the illustration.

Vertical text block in the bottom left of the illustration.

Vertical text block at the bottom left corner of the illustration.

Vertical text block in the upper right of the illustration.

Vertical text block in the middle right of the illustration.

Vertical text block in the lower middle right of the illustration.

Vertical text block in the lower right of the illustration.

Vertical text block in the bottom right of the illustration.

Vertical text block at the bottom right corner of the illustration.

Vertical text block in the upper left of the illustration.

Vertical text block in the middle left of the illustration.

Vertical text block in the lower middle left of the illustration.

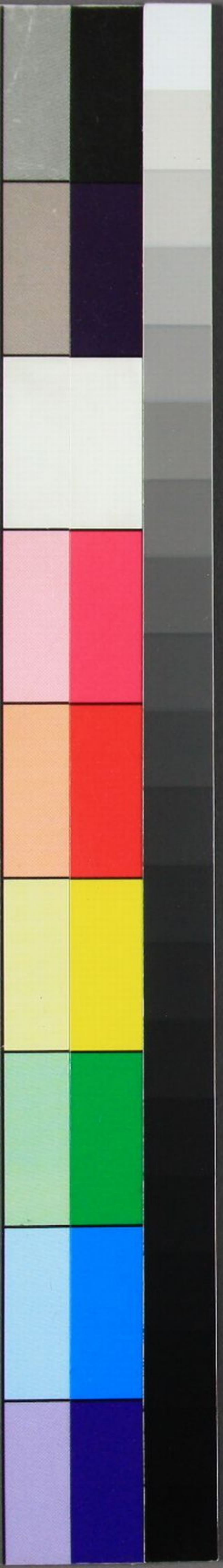
Vertical text block in the lower left of the illustration.

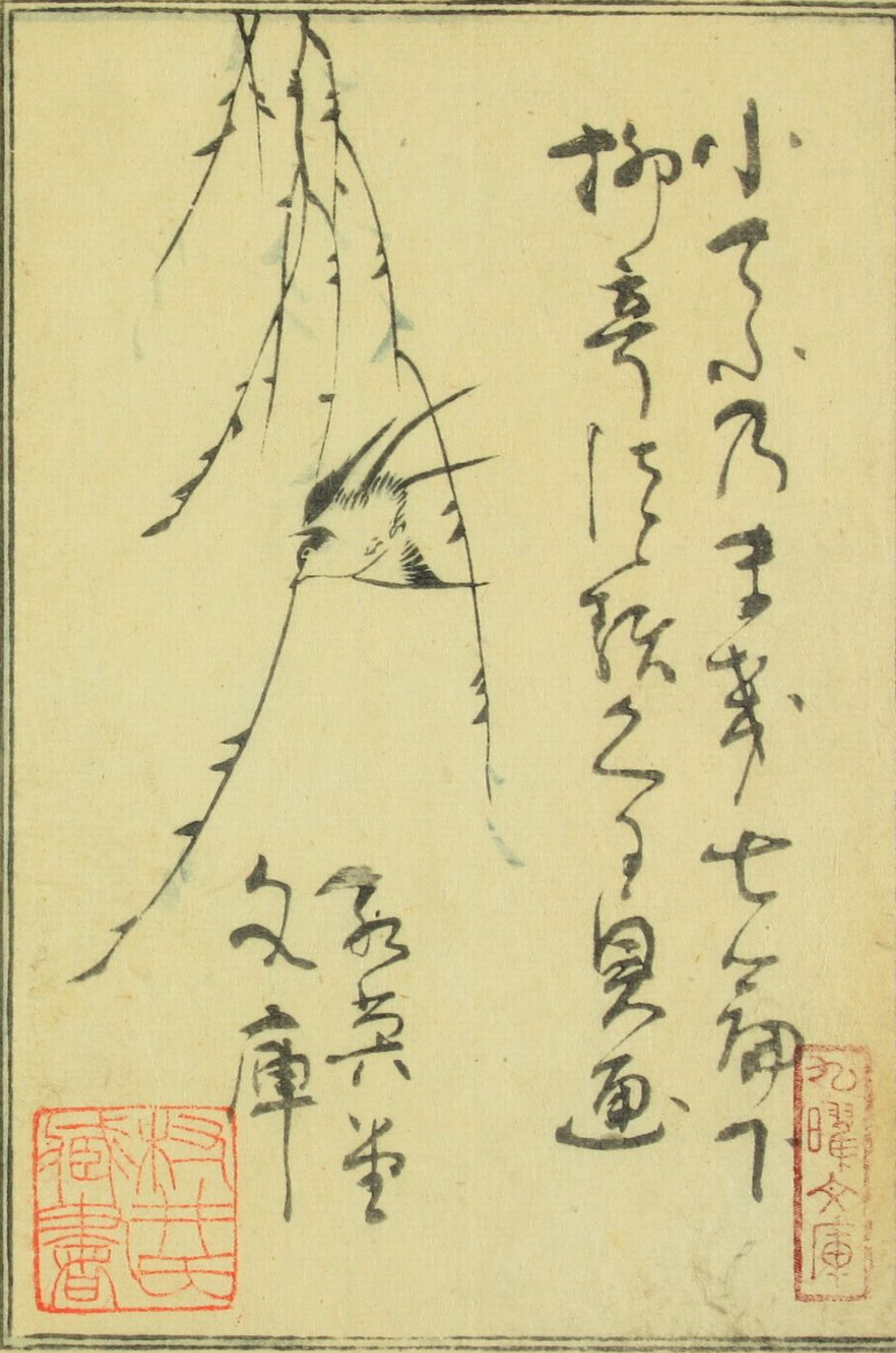
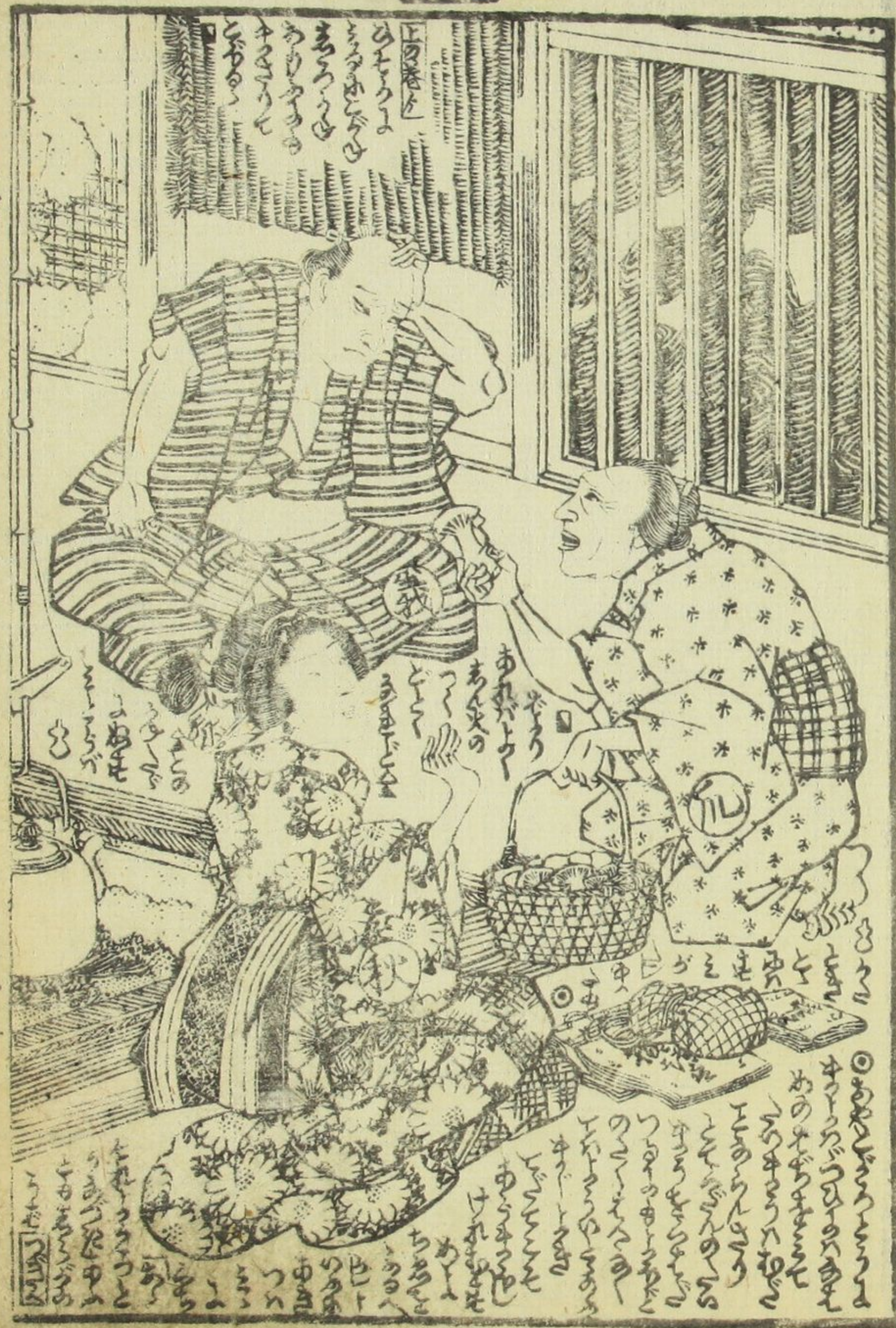
Vertical text block in the bottom left of the illustration.

Vertical text block at the bottom left corner of the illustration.



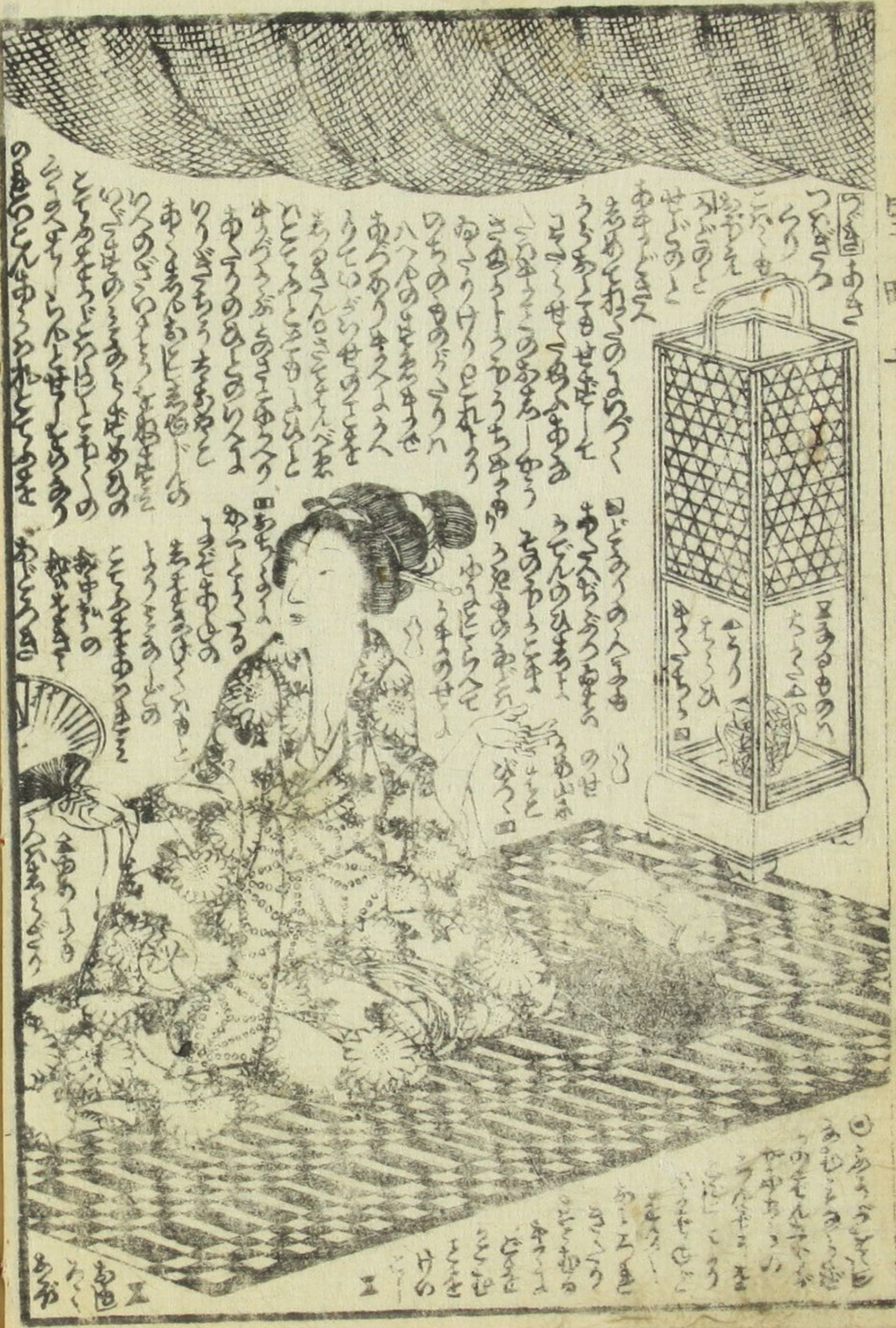












Handwritten Japanese text in vertical columns, likely a haikai or a similar poetic form, accompanying the illustration. The text is written in a cursive style.

Additional handwritten Japanese text at the bottom of the page, possibly a commentary or a signature.



Handwritten Japanese text in vertical columns, likely a haikai or a similar poetic form, accompanying the illustration. The text is written in a cursive style.





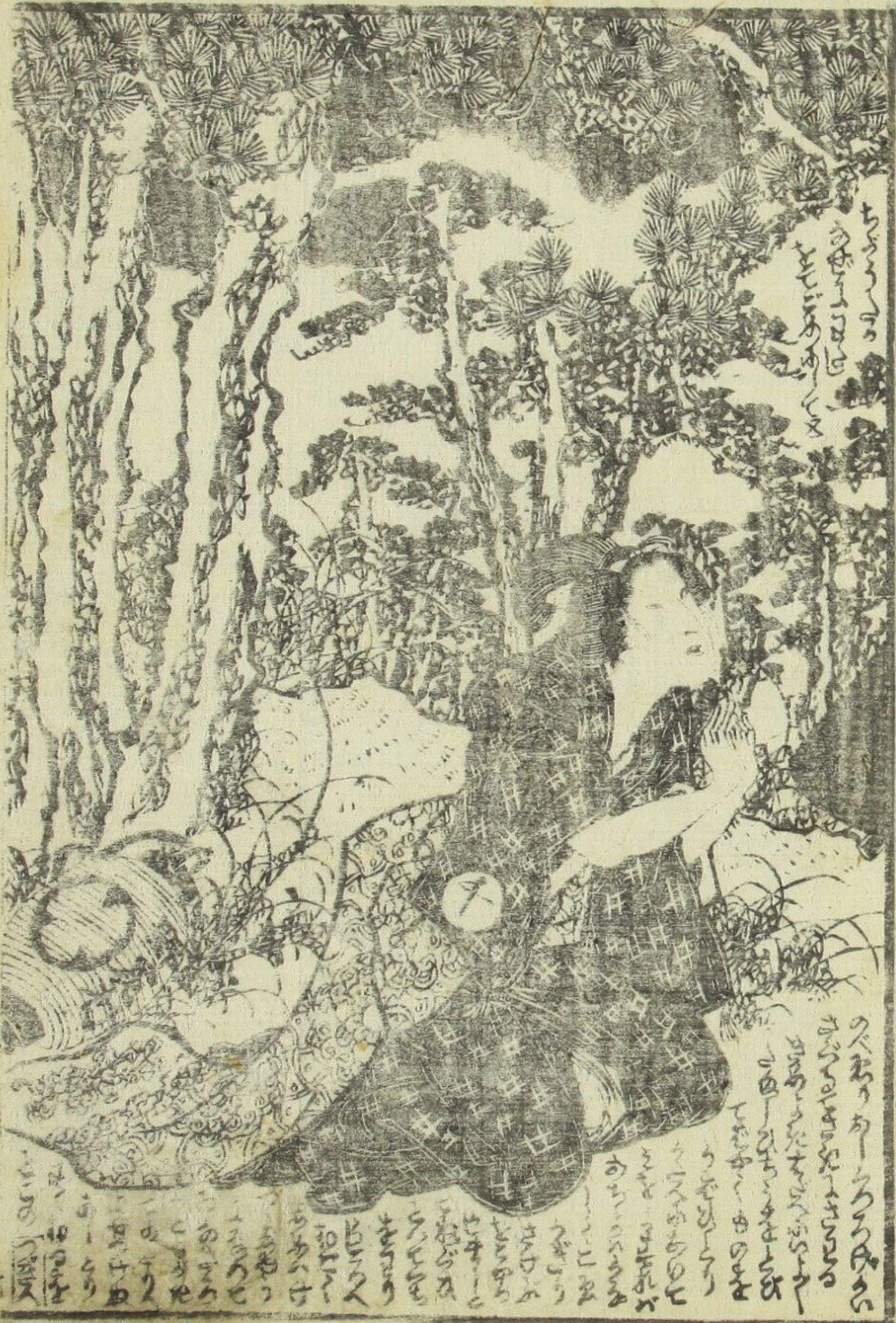












山田七

七



