



扇
道

胡
不
乃

弄
著

外
題
圖
文
曲

五
扇
下

金
所
源
氏



五
編
上



源氏



五編上



胡蝶卷 第五輯



虫の中ふ蝶々を可憐き物にあはれ然るは故人松坡とり入
 博學強記の識者よと頗豪邁の英雄ありを蚊虻を懼る
 車毛虫よりも甚一かたは是道理とりて論難一僕が著
 する草帛年来種々ありとて皆者客の睡眠を催一愛顧

を蒙るものありし此胡蝶の巻をうりて予は觸のふ童禪
 達も少くしきし聞喜もさうと何如の住境ありしと
 亦理外之吉夢又くる幸を只水々此夢の抽興とせり
 夢の間も祈侍るまむ 柳亭種彦

室町五



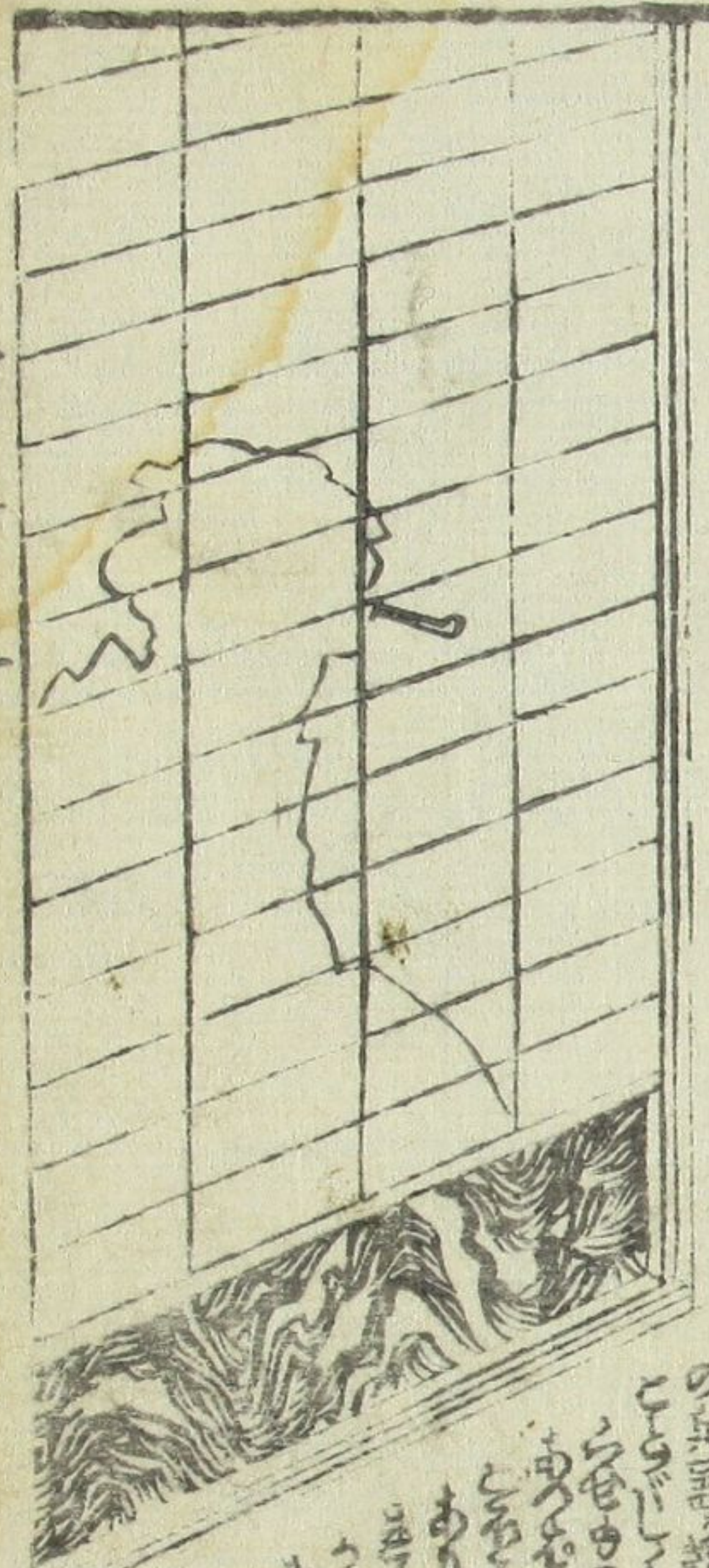


河邊牡丹王六郎



水茶屋の義徳

假伎武勇五郎



Handwritten text in a cursive script, located in the upper right corner of the left page.

Large block of handwritten text in a cursive script, occupying the lower half of the left page.



Handwritten text in a cursive script, located in the upper right area of the right page, partially overlapping the illustration.

Handwritten text in a cursive script, located in the lower right area of the right page.

Large block of handwritten text in a cursive script, occupying the lower half of the right page.



Handwritten text in the upper right corner of the illustration, including the characters 'かみ' (hairdresser) and 'かみ' (hairdresser).

Handwritten text in the lower right corner of the illustration, including the characters 'かみ' (hairdresser) and 'かみ' (hairdresser).



Handwritten text in the upper right corner of the illustration, including the characters 'かみ' (hairdresser) and 'かみ' (hairdresser).

Handwritten text in the lower right corner of the illustration, including the characters 'かみ' (hairdresser) and 'かみ' (hairdresser).



Handwritten Japanese text in vertical columns, likely a list of items or a menu, located at the top of the page.

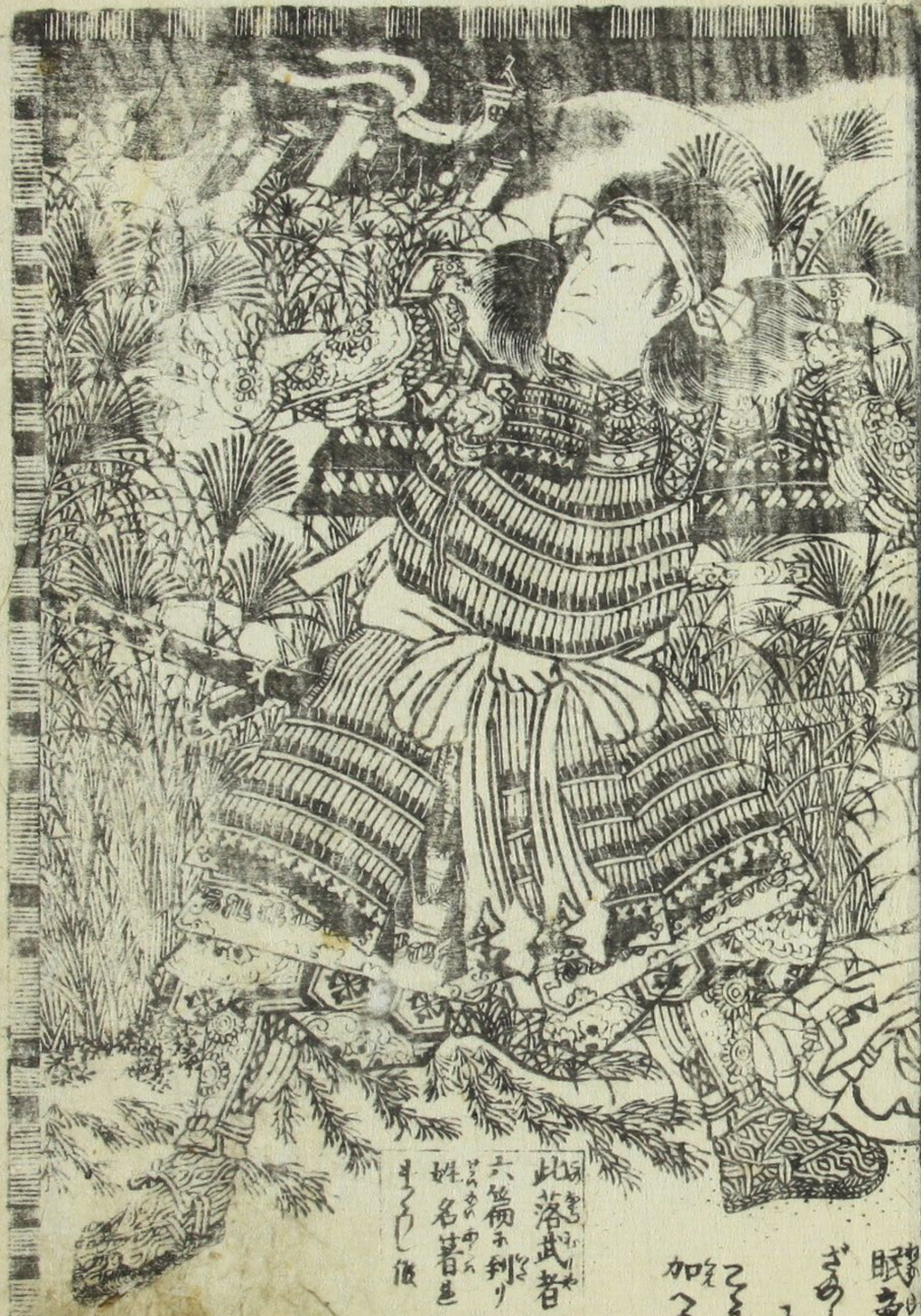
Handwritten Japanese text in vertical columns, located in the middle section of the page.

Handwritten Japanese text in vertical columns, located at the bottom of the page.

Handwritten Japanese text in vertical columns, located at the top of the page.

Handwritten Japanese text in vertical columns, located in the middle section of the page.

Handwritten Japanese text in vertical columns, located at the bottom of the page.



此落武者
六箇例不到
姓名著色
生色後

眠氣
さ
か
ろ



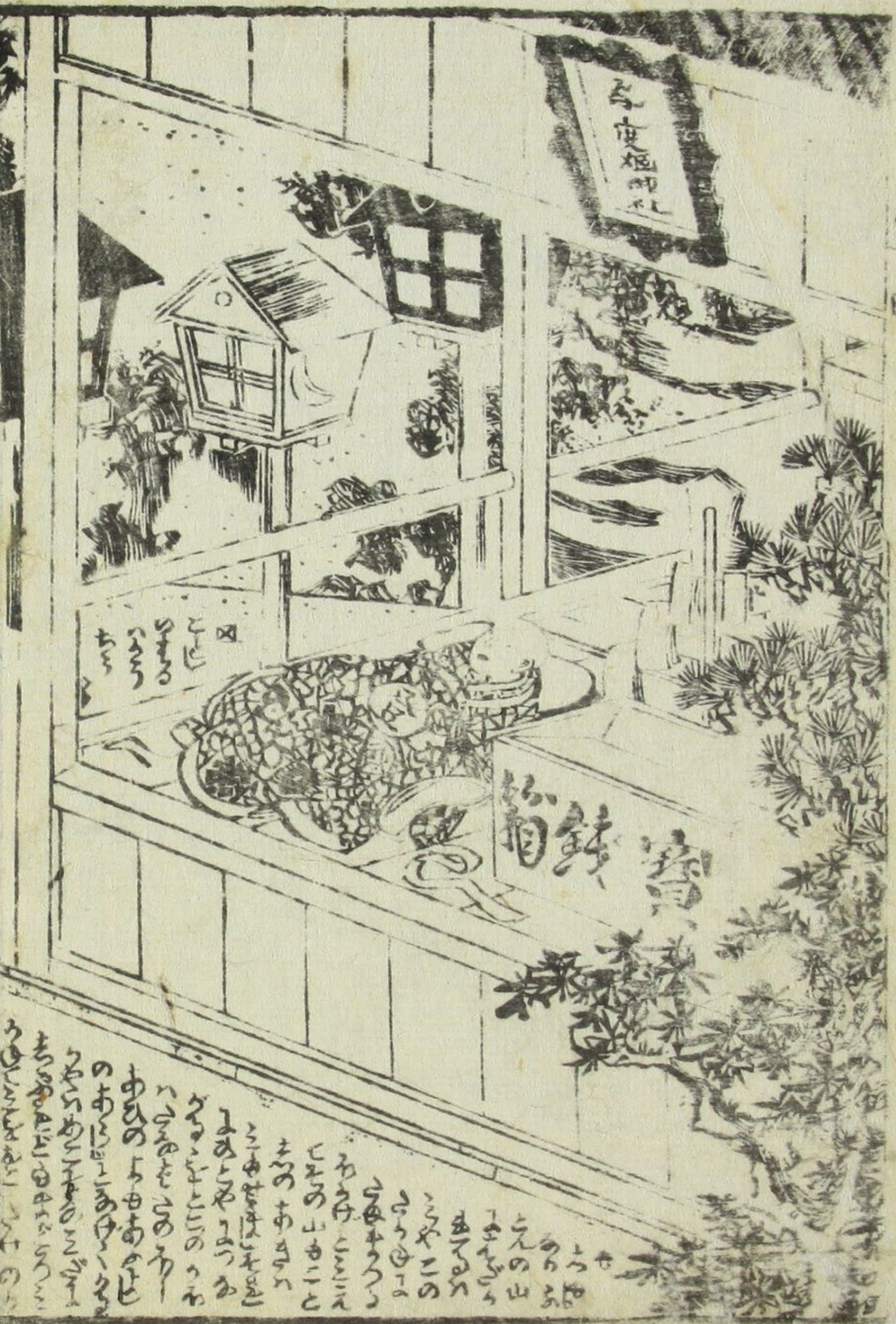
鄙洋
如兒
於率

此連ハ
同時
事
其様
勇

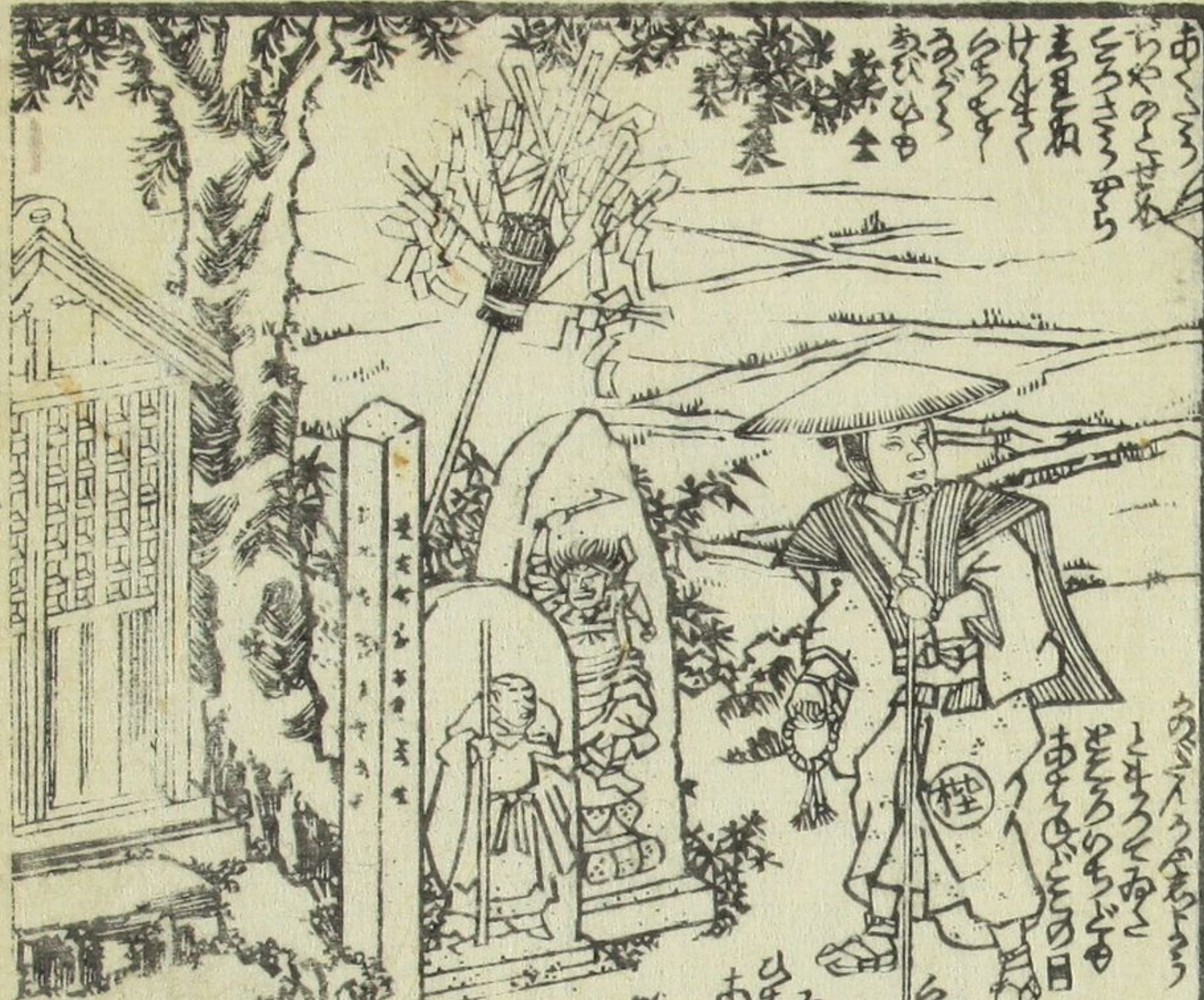
田



Handwritten text in Japanese and Latin script, likely describing the scene or the person depicted. The text is arranged in columns and includes various characters and words.



Handwritten text in Japanese and Latin script, likely describing the scene or the person depicted. The text is arranged in columns and includes various characters and words.



Handwritten text in a cursive script, likely a transcription of a Japanese text. The text is arranged in vertical columns, starting from the right side of the page and moving towards the left. The characters are densely packed and difficult to read without specialized knowledge of the script.



Handwritten text in a cursive script, continuing the transcription from the left page. The text is arranged in vertical columns, starting from the right side of the page and moving towards the left. The characters are densely packed and difficult to read without specialized knowledge of the script.



Handwritten text in a cursive style, likely a commentary or dialogue, positioned below the seated figure.



Handwritten text in a cursive style, likely a commentary or dialogue, positioned below the lying figure.

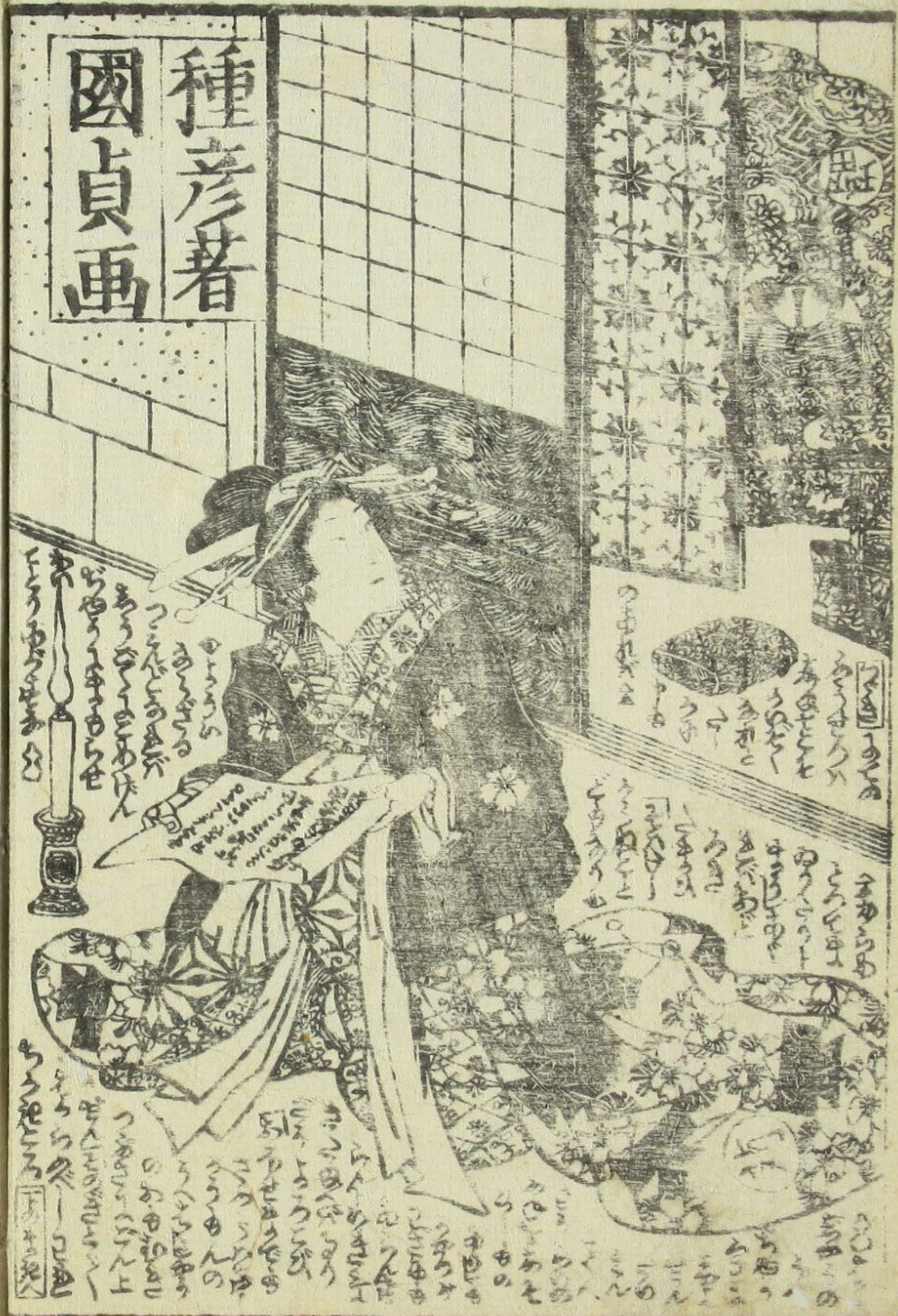


Handwritten text in a cursive style, likely a commentary or dialogue, positioned below the three figures.



Handwritten text in a cursive style, likely a commentary or dialogue, positioned below the figure in the dark kimono.

種彦著
國貞画



本家
實母散
私方東田さんのお話...
中橋南傳馬門下白雲...
葉堂孝輔製

鼠祠通夜譚

四編より
八編まで
出板仕り

柳亭種彦作
梅蝶樓國貞画

厚化粧萬年嶋田

初編より
追々出板
辰春秋とん

為永春水作
梅蝶樓國貞画

この世の昔く沙汰せう...
賣線若田の家小仇做んと...
あどとる衣もあてて化粧...
草奴紙小あ





胡弓

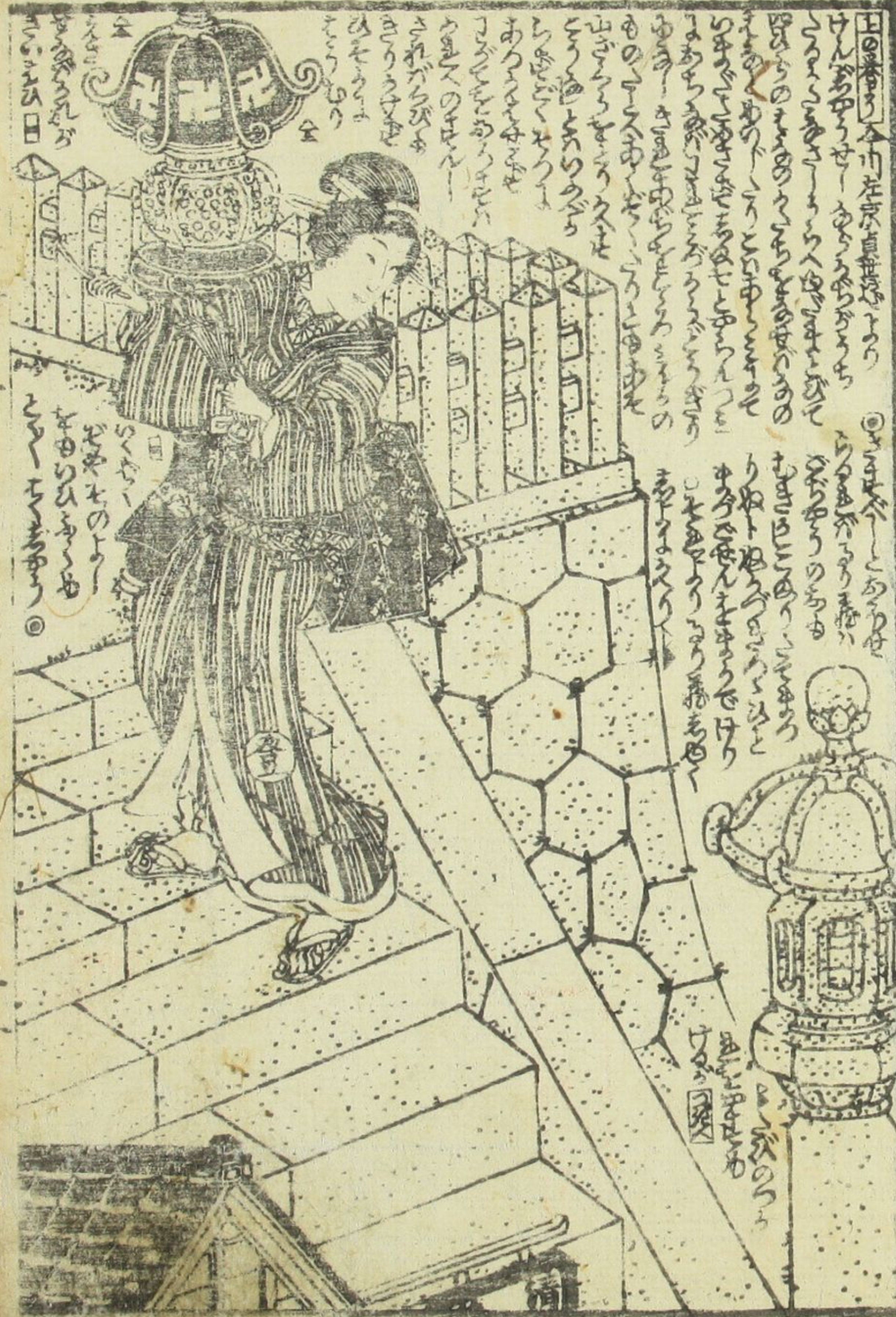
胡弓

秀著

外題
五戸下

五戸下

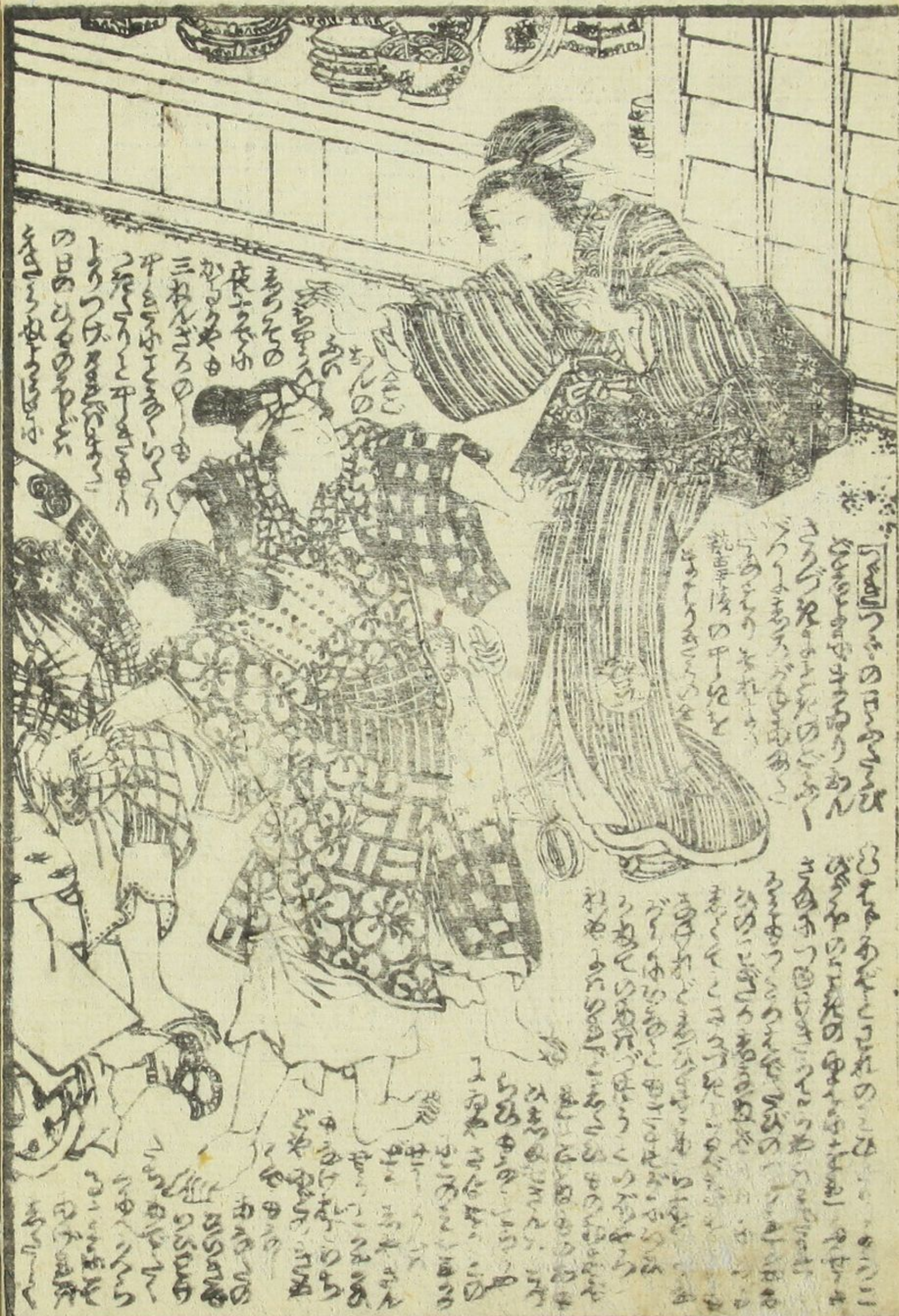




小下英柳速樓
 蝶冊堂亭梅
 卷紅鑄著蝶
 畫



文庫





此の武士は
 名は山本五郎
 義経の御子
 也其の父は
 名は山本朝臣
 義朝也其の母
 名は山本朝臣
 義朝の御妻也

此の武士は
 名は山本五郎
 義経の御子
 也其の父は
 名は山本朝臣
 義朝也其の母
 名は山本朝臣
 義朝の御妻也



此の武士は
 名は山本五郎
 義経の御子
 也其の父は
 名は山本朝臣
 義朝也其の母
 名は山本朝臣
 義朝の御妻也

此の武士は
 名は山本五郎
 義経の御子
 也其の父は
 名は山本朝臣
 義朝也其の母
 名は山本朝臣
 義朝の御妻也

作者「此画本支の畧文を補ひ
外題を借し源氏的面影を寫す



室田五
 源氏
 面影
 寫す



源氏
 面影
 寫す
 室田五





Vertical columns of handwritten Japanese text, likely a play script or commentary, surrounding the illustration. The text is written in a cursive style.



Vertical columns of handwritten Japanese text, likely a play script or commentary, surrounding the illustration. The text is written in a cursive style.

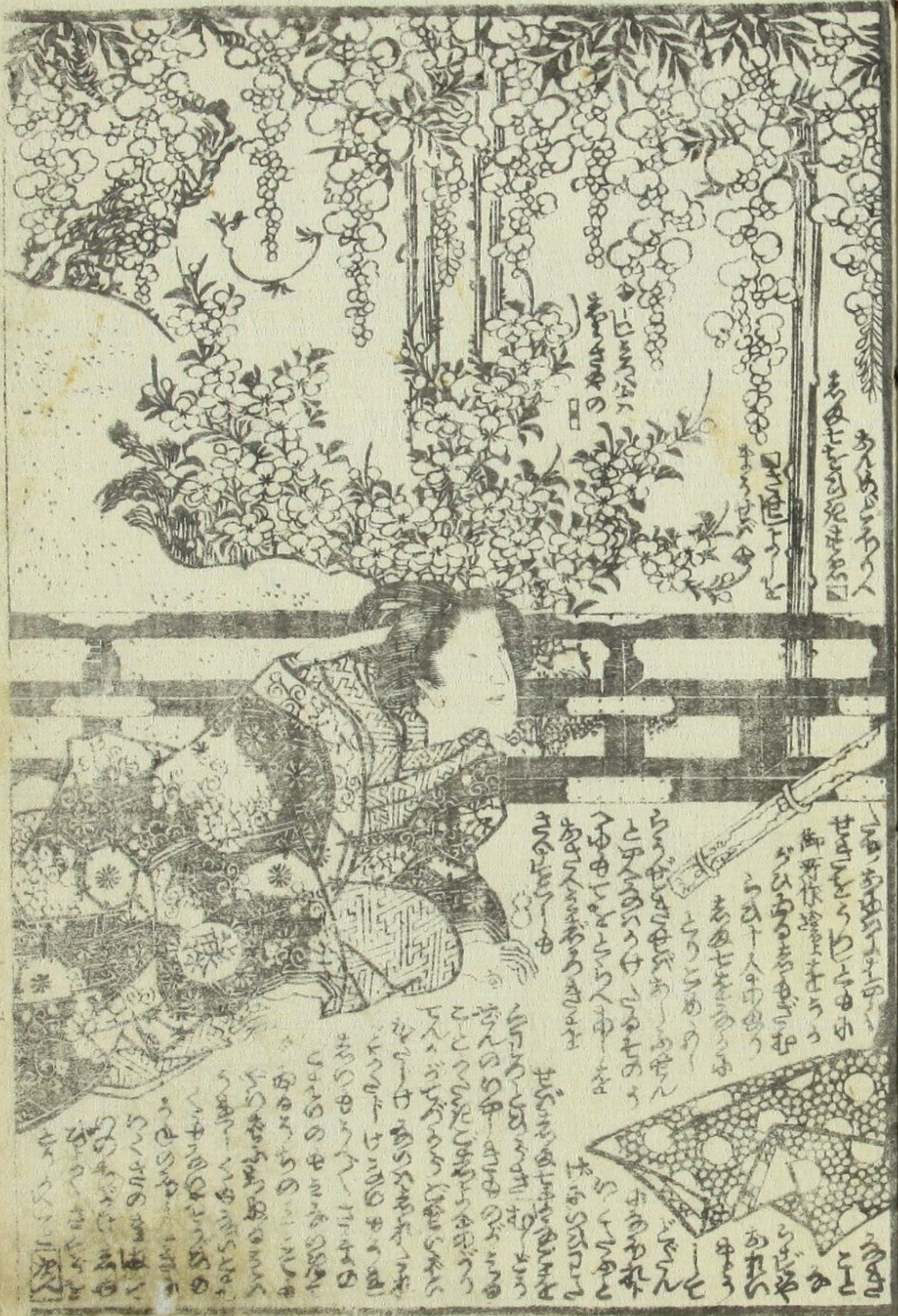
Handwritten text in a Gothic script, likely Latin or German, located at the top of the right page. The text is arranged in several lines, with some words appearing to be names or titles.

Handwritten text in a Gothic script, likely Latin or German, located at the bottom of the right page. This section appears to be a continuation or a separate entry related to the text above.

Handwritten text in a Gothic script, likely Latin or German, located at the top of the left page. The text is arranged in several lines, with some words appearing to be names or titles.

Handwritten text in a Gothic script, likely Latin or German, located at the bottom of the left page. This section appears to be a continuation or a separate entry related to the text above.





四續 殺害せし世胡蝶
 新王と道行の通
 其小出の事大無神の事
 其事大無神の事
 其事大無神の事



此の書は...
 道行の事...
 新王の事...
 大無神の事...
 其の事...
 其の事...
 其の事...



此の書は...
 道行の事...
 新王の事...
 大無神の事...
 其の事...
 其の事...
 其の事...

種彦著國貞画



新局九尾傳 七編より 爲水春水作
十一編より 梅蝶樓國貞画

室町源氏胡蝶卷 十二編種彦作
十四編國貞画

假名情談戀唾倉 四編如阜作
大尾國貞画

童謡妙々車 十二編種彦作
十三編國貞画

薄倂幻日記 十七編春水作
十八編國貞画

七娘葛飾譚 九編種彦作
十編國貞画

南傳馬鹿書 丁日
鳥屋吉口藏板

大傳太の双紙 四編柳亭録
五編國貞画

花封谷草 十編種彦作
大尾國貞画

筆海四國聞書 十二編種彦作
十三編國貞画

明鴉墨画通袖襦 十三編種彦作
十四編國貞画

