

室町源氏御歴
 卷柳海種之次
 仍梅陳時高圖
 上

三曜文庫

だんごの繪は美觀なりと其立廻りを書取程の力のあへの讀み多しなりても讀ても
 幼児達の興せしむるもの修羅場とて合戦物語具足着て武者の画師彫工
 勞多くして功まじしと板元も厭ふものなり時代りまらぬ動かしむる草花浦木偶の
 出づるもの困る事作者もわたり上目竜刀の端午共饒りりの二ツあれと唐人と
 りの奴も合巻一の喝采とのを此此外の画よかのてんるゝゝゝゝ此共編も五編あつた
 對決の所あど人物多く屋臺愚俗を仮令画組の骨を折るとも扇一本の
 捌きまゝの讀よ味深らもあれそれれも拙文でなるとは此共編も五編あつた
 花の御刃の名をう艶もて先一幕が長祚御衣の蛤棲辱氣もあつた欠と吹
 とも竜宮城の才姫が焔大玉よ口説きする趣の異と滑稽音もあけれと
 この六巻柄のろろろ自見越入道のりんぐとあんであんでも讀つた御覽と
 願ふと亭子の柳の風吹夫の所作の青色をつらうと序文の代ふる
 乙丑春新刻甲子夏落成
 後諺紫樓いすの種彦

三



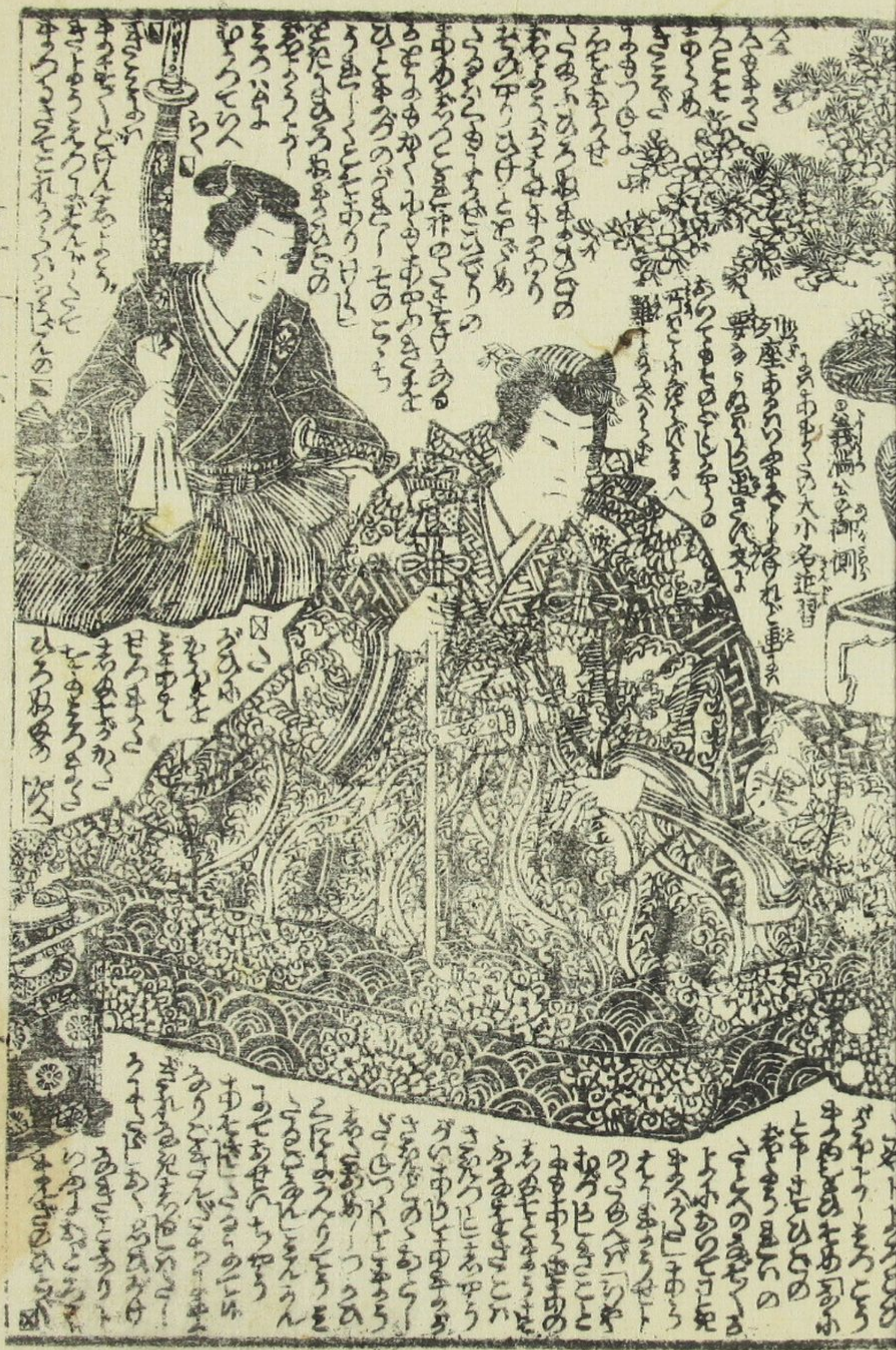
廣澤心



靖玲

教外房

室田



Handwritten text in a cursive style, likely a transcription of a play script, located above the woman on the left.

Handwritten text in a cursive style, likely a transcription of a play script, located between the woman and the man.

Handwritten text in a cursive style, likely a transcription of a play script, located below the man.



Handwritten text in a cursive style, likely a transcription of a play script, located above the man on the left.

Handwritten text in a cursive style, likely a transcription of a play script, located between the man and the woman.

Handwritten text in a cursive style, likely a transcription of a play script, located below the woman.



此の御座り申す
御座り申す
御座り申す

御座り申す
御座り申す
御座り申す

御座り申す
御座り申す
御座り申す

御座り申す
御座り申す
御座り申す

御座り申す
御座り申す
御座り申す

御座り申す
御座り申す
御座り申す

御座り申す
御座り申す
御座り申す

御座り申す
御座り申す
御座り申す

御座り申す
御座り申す
御座り申す

御座り申す
御座り申す
御座り申す

御座り申す
御座り申す
御座り申す

御座り申す
御座り申す
御座り申す

御座り申す
御座り申す
御座り申す



江戸下



江戸下





Handwritten text in a cursive script, likely a transcription of a speech or a narrative passage, located above the main illustration on the right page.



Handwritten text in a cursive script, located below the main illustration on the right page.



Handwritten text in a cursive script, located above the main illustration on the left page.



Handwritten text in a cursive script, located below the main illustration on the left page.



種彦作國貞画

柳蔭月朝妻

十編 大尾 山々亭有人作 柳朝樓國貞画

藪黄鸝八幡不知

十編 大尾 山々亭有人作 錦朝樓芳彦画

阿玉ヶ池梯月形

五編 大尾 爲永春水作 梅堂國貞画

八天傳犬の最紙

六十柳亭作 小學行儀法 全一冊

實母散

一四の町書 爲永春水作 十集堂芳彦作

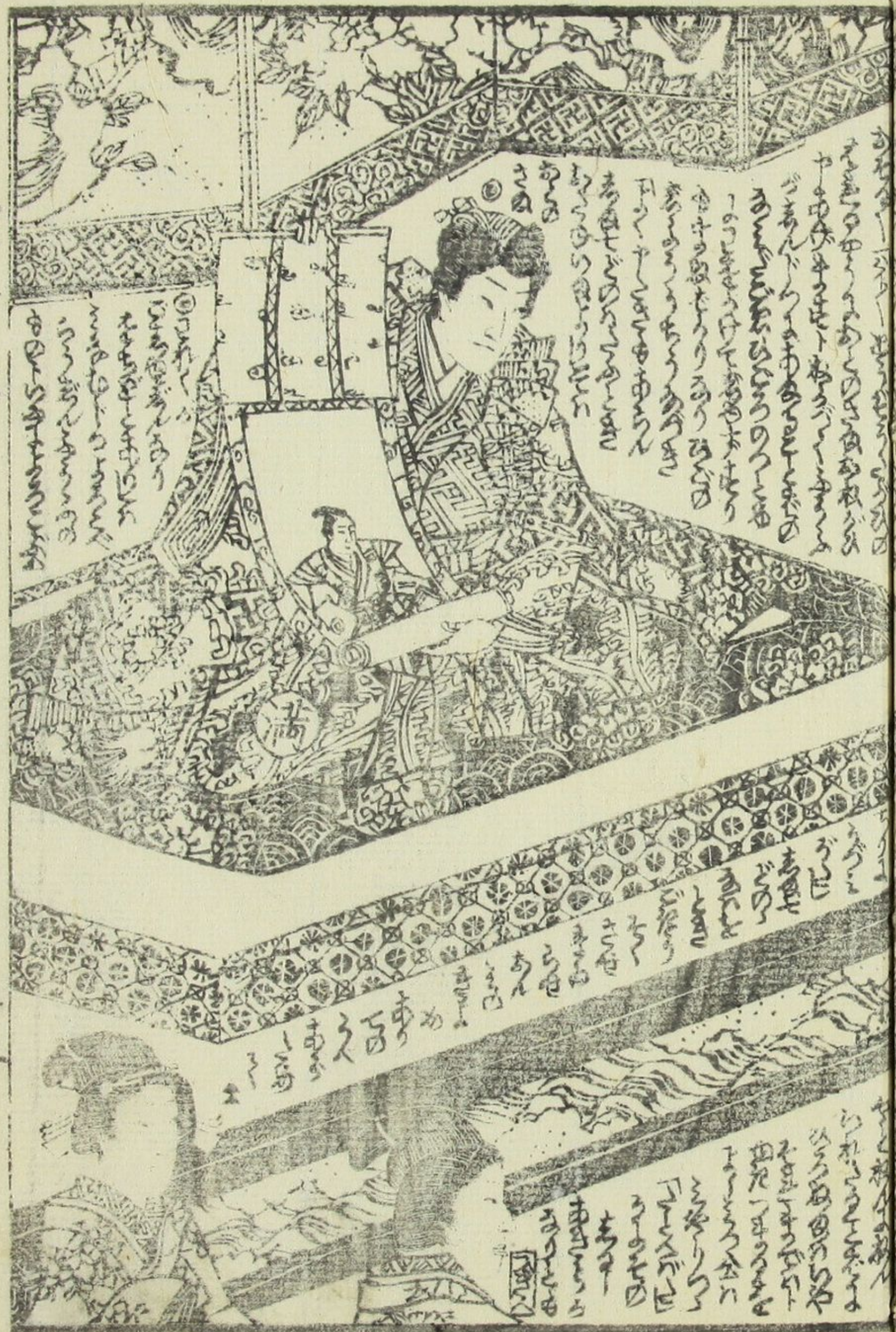


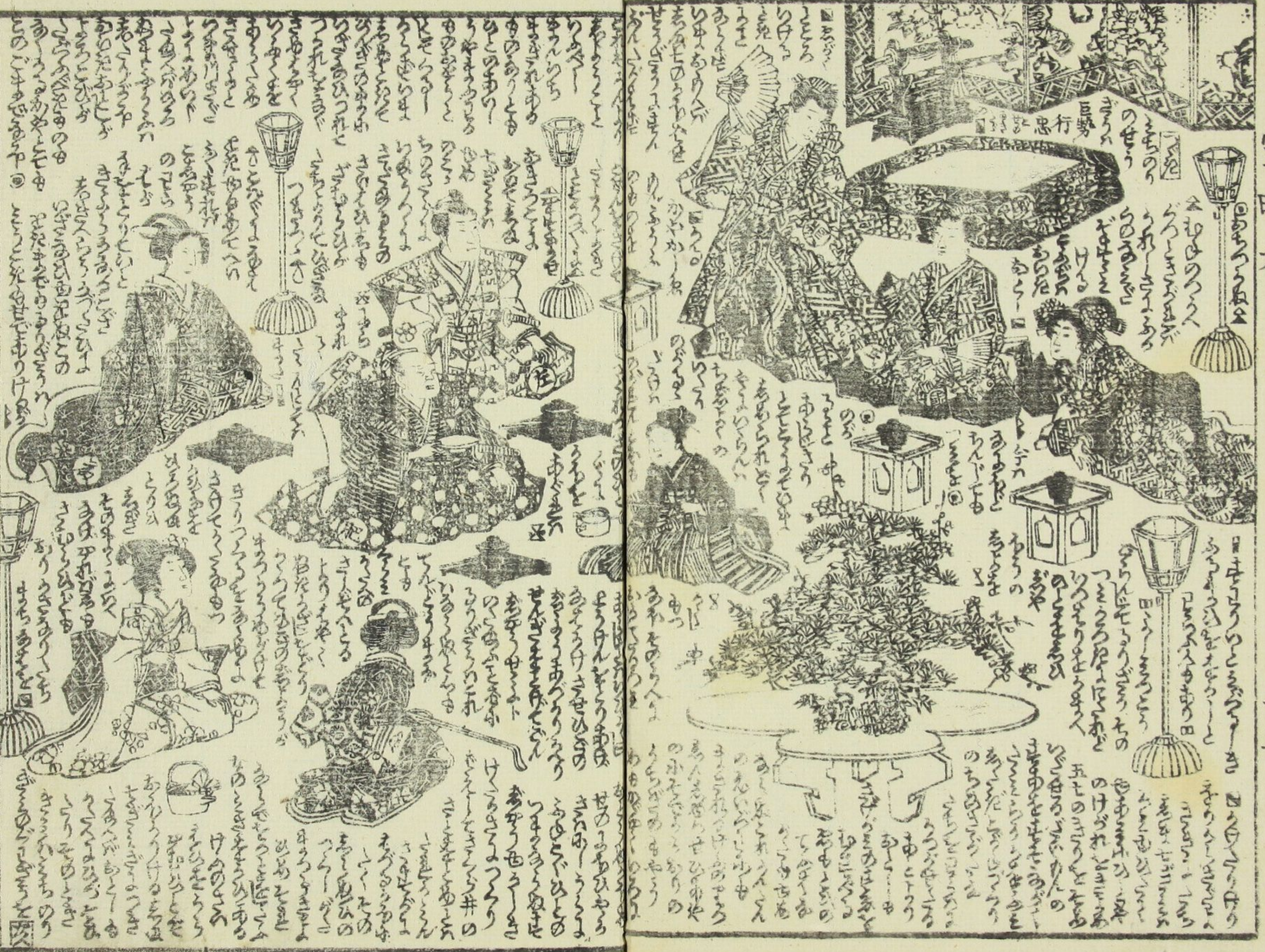
柳 氏
梅 氏
福 画



六 編 下







Page 1

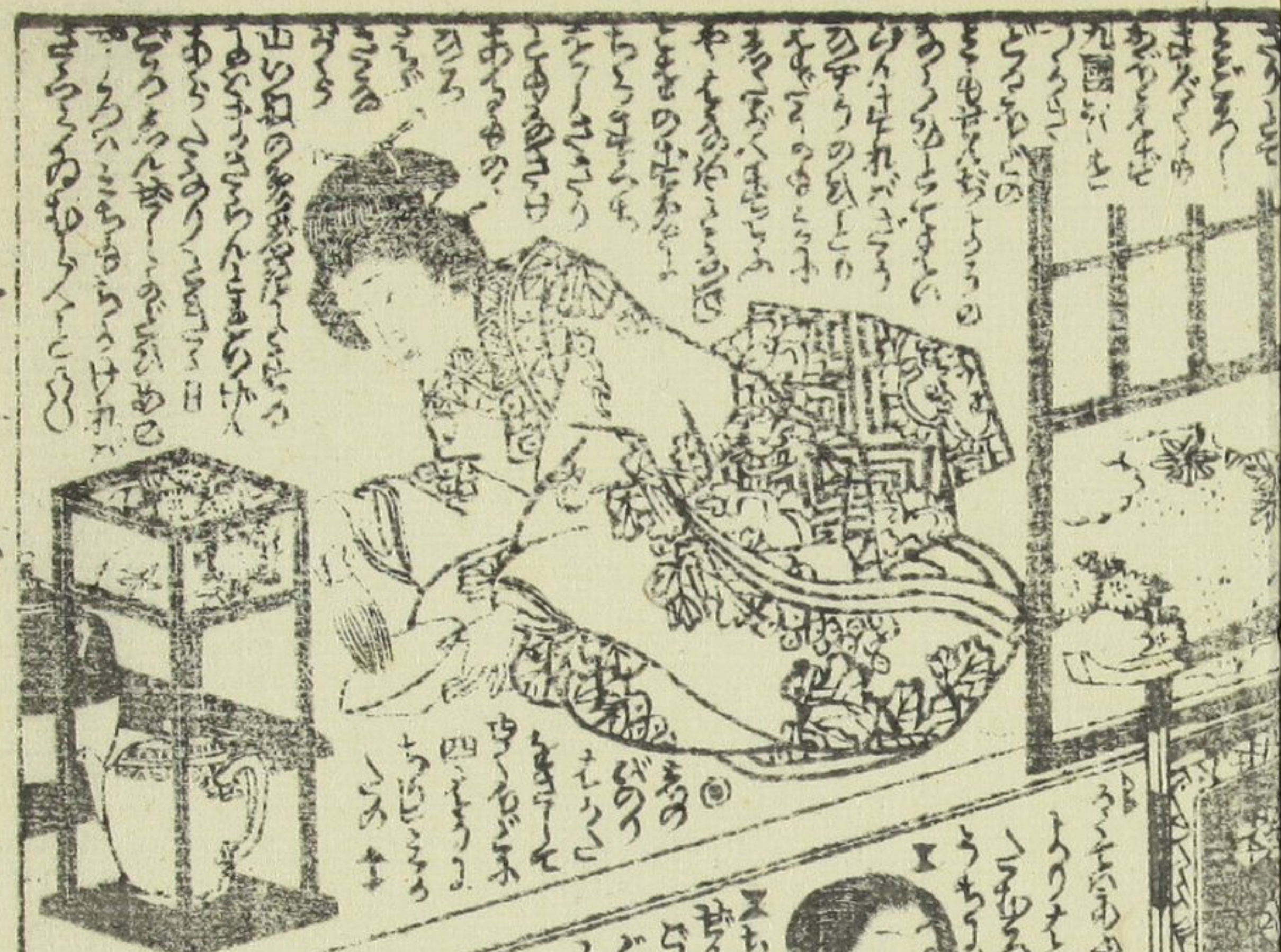
Page 2

Page 3

Page 4

Handwritten text in cursive script, likely a transcription of a play or narrative, surrounding the illustration on the left page.

Handwritten text in cursive script, likely a transcription of a play or narrative, surrounding the illustration on the right page.



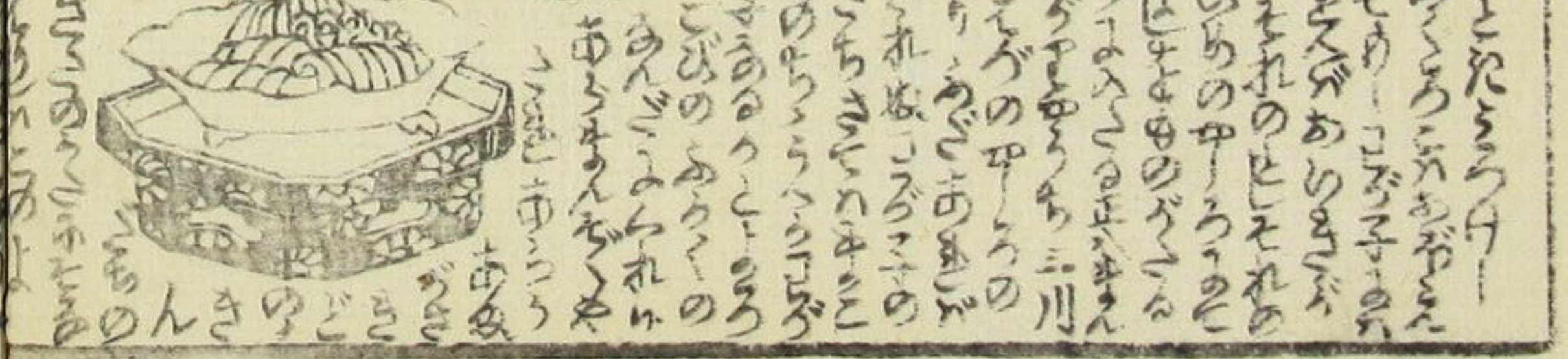
Handwritten Japanese text in vertical columns, likely a dialogue or narrative passage, located above the woman in the kimono.



Handwritten Japanese text in vertical columns, continuing the narrative or dialogue, located above and below the woman in the dark kimono.



Handwritten Japanese text in vertical columns, located above the woman in the kimono on the right page.



Handwritten Japanese text in vertical columns, located below the woman in the kimono on the right page.

Handwritten text in vertical columns at the top of the left page, likely serving as a title or introductory text for the scene below.

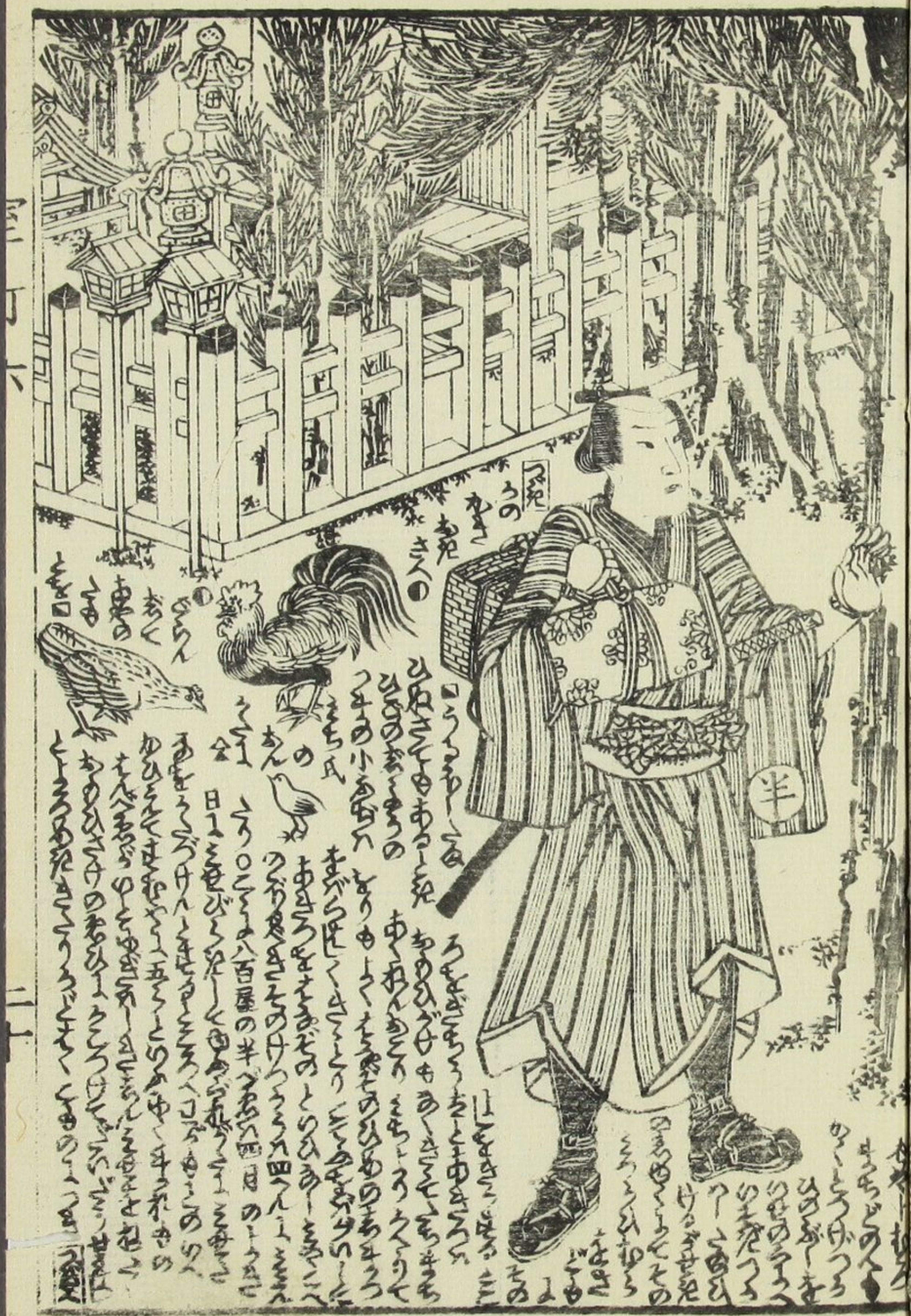


Handwritten text in vertical columns at the bottom of the left page, likely providing commentary or a continuation of the text from the top.

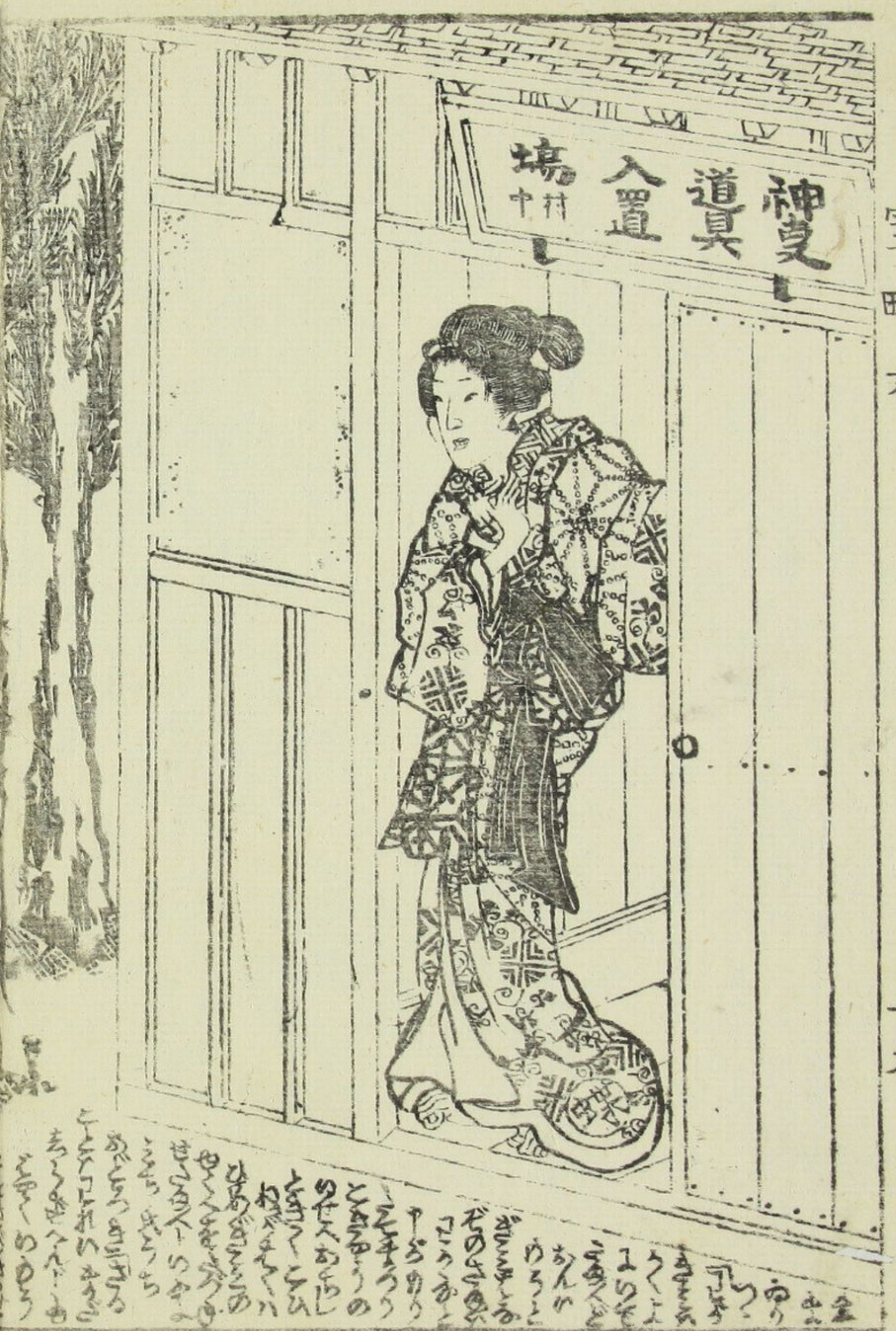


Handwritten text in vertical columns at the top of the right page, likely serving as a title or introductory text for the scene below.

Handwritten text in vertical columns at the bottom of the right page, likely providing commentary or a continuation of the text from the top.

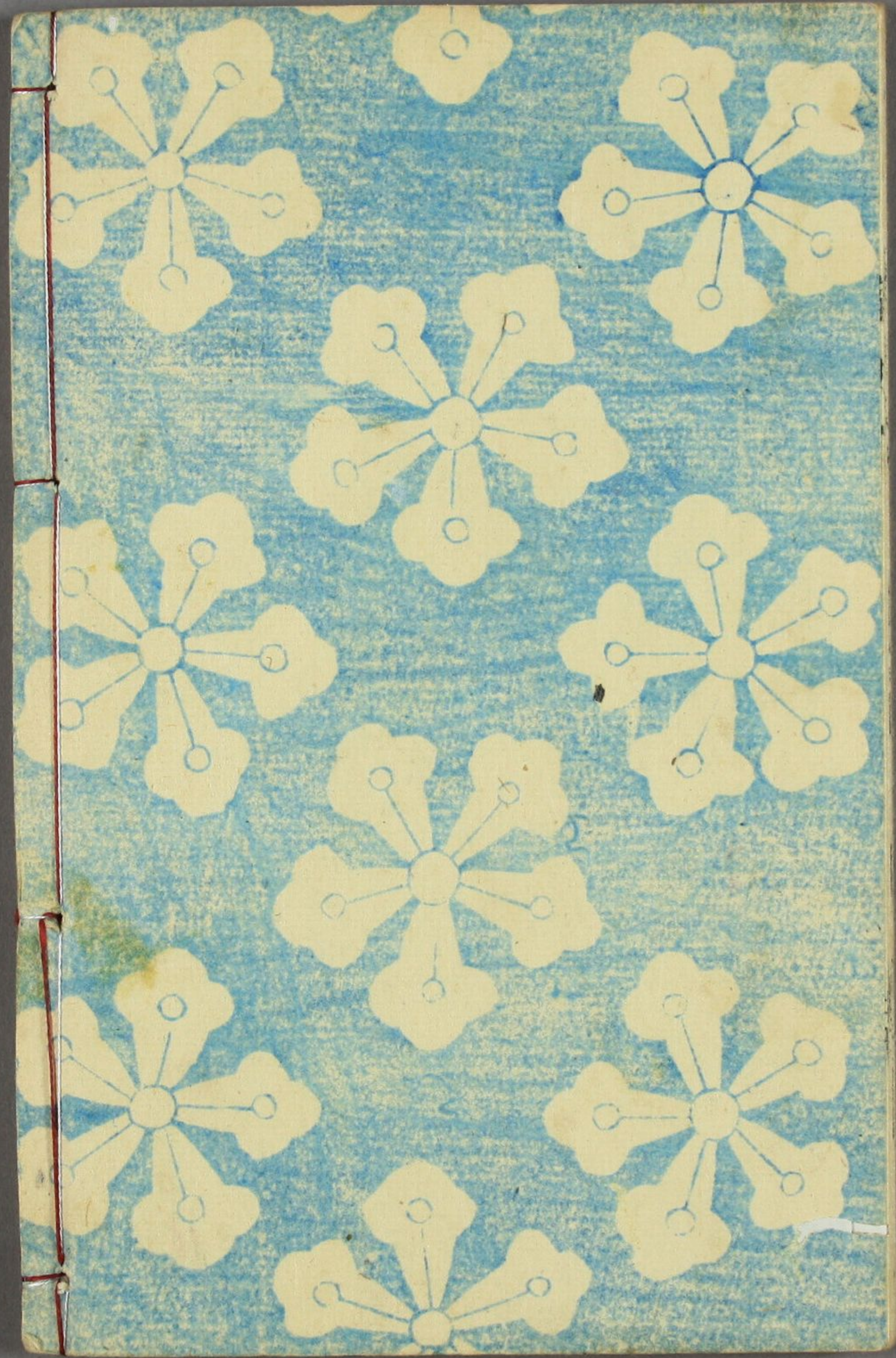


Handwritten text in the left margin, including the characters '半' (han) and '十' (ju) written vertically.



Handwritten text in the bottom margin of the right page.

Vertical text on the right edge of the page, including the characters '田' (ta) and '十' (ju).



八景
花
心
花
心
花
心
花
心
花
心

集六



小森喜子

