

源氏



五編上

0 1 2 3 4 5 6 7 8 9 10 11 12 13 14 15 16 17 18 19 20 21 22 23 24 25 26 27 28 29 30 31 32 33 34 35 36 37 38 39 40 41 42 43 44 45 46 47 48 49 50 51 52 53 54 55 56 57 58 59 60 61 62 63 64 65 66 67 68 69 70 71 72 73 74 75 76 77 78 79 80



一

胡蝶卷 第五輯

室町源氏胡蝶
卷神道種之次
仍梅陳晴画圖



虫の中ふ蝶々を可憐と物あり然る故人松坡より久
博學強記の識者よと頗豪邁の英雄よりを蛟蜨を懼る
車毛虫よりも甚かかれば是道理とて論難し僕が著
る草席年来種々ありとて皆者客の睡眠を催し愛顧

を蒙るのあかりし此胡蝶の巻をうけいし觸るの童稚
達も少くも中聞喜とてさうとて何れ佳境ありとて是も
亦理外く吉夢とて幸を只水々此夢の柳興とても覺
すゆと夢の間も祈侍るも

柳亭種彦

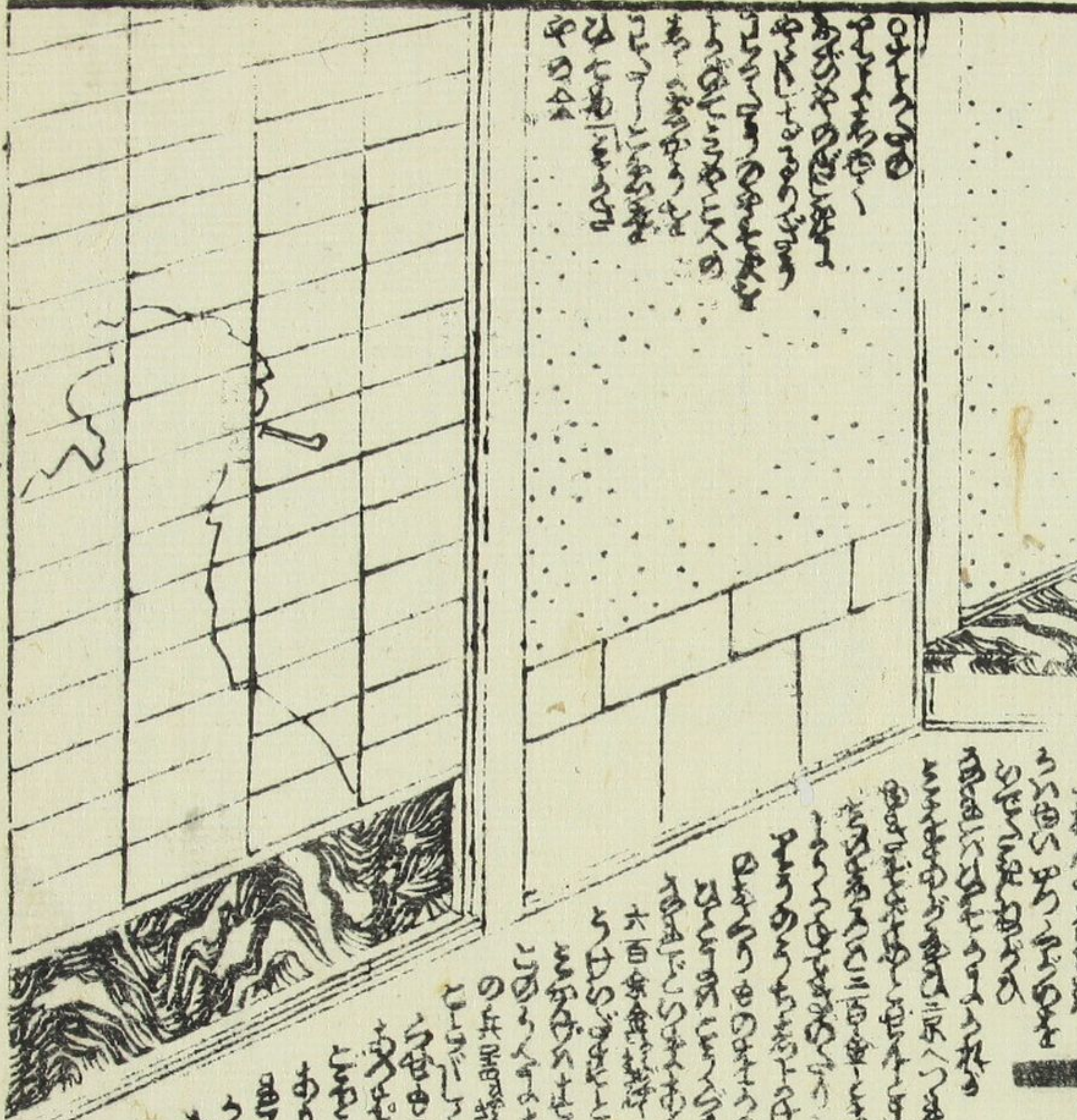
室町五



河邊正菊王六郎

水茶屋於我園

假使武勇五郎



Handwritten text in a cursive script, likely a transcription of a play or a commentary. The text is arranged in several lines, starting from the top right of the page and moving downwards.

Handwritten text in a cursive script, continuing from the previous page. It is arranged in several lines, starting from the top right of the page and moving downwards. The text appears to be a transcription of a play or a commentary.



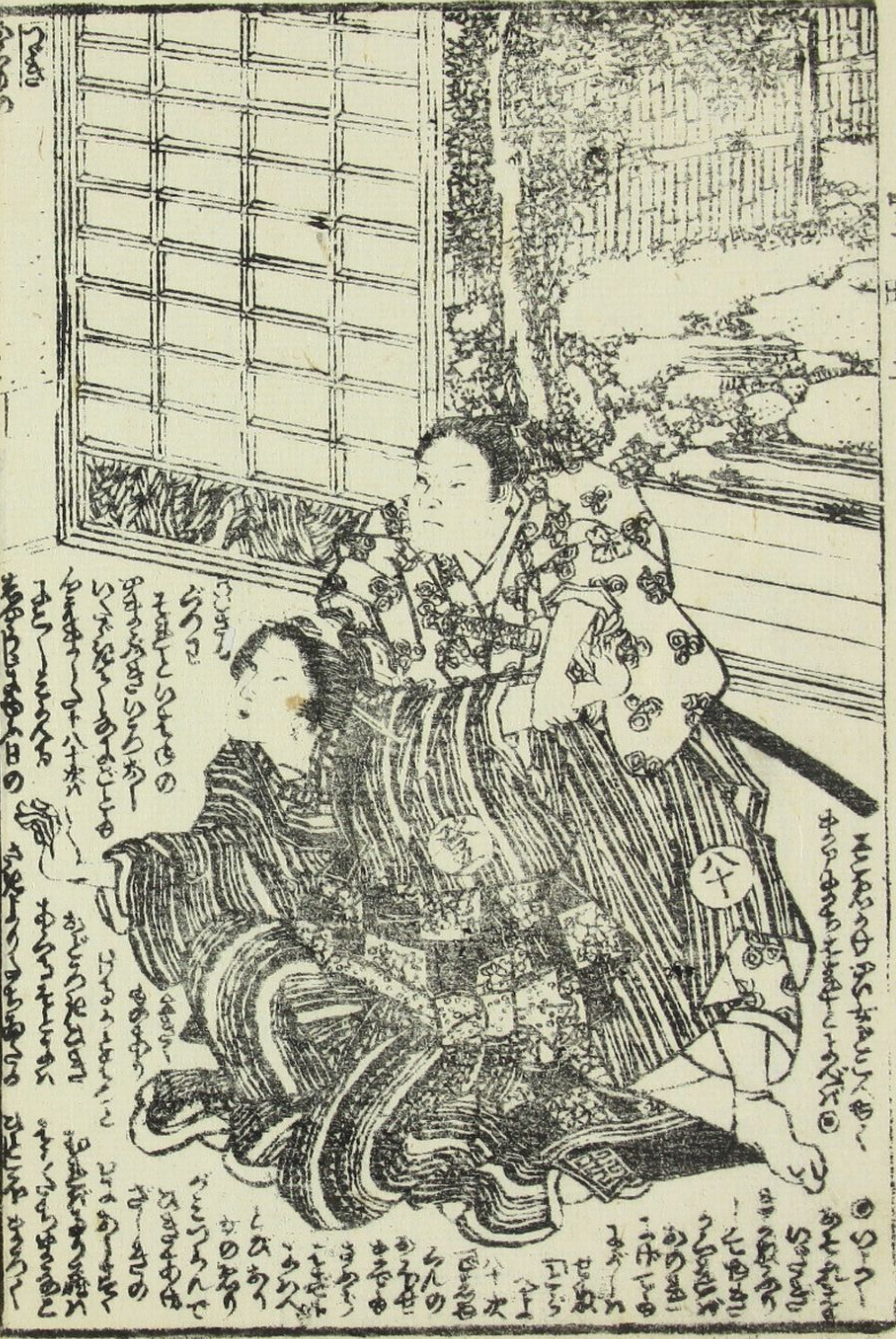
Handwritten text in a cursive script, likely a transcription of a play or a commentary. The text is arranged in several lines, starting from the top right of the page and moving downwards.

Handwritten text in a cursive script, likely a transcription of a play or a commentary. The text is arranged in several lines, starting from the top right of the page and moving downwards.



Handwritten text in a cursive script, likely a Japanese dialect or a specific form of shorthand, located at the top of the left page.

Handwritten text in a cursive script, continuing the narrative or dialogue from the top of the page, located at the bottom of the left page.



Handwritten text in a cursive script, located at the top of the right page, above the illustration.

Handwritten text in a cursive script, located at the bottom of the right page, below the illustration.



Handwritten text in a vertical column, likely a description of the scene or the woman's actions.



Handwritten text in a vertical column, likely a description of the scene or the woman's actions.



Handwritten text in a vertical column, likely a description of the scene or the woman's actions.



此落武者
 六箇不到
 姓名者是
 生色也

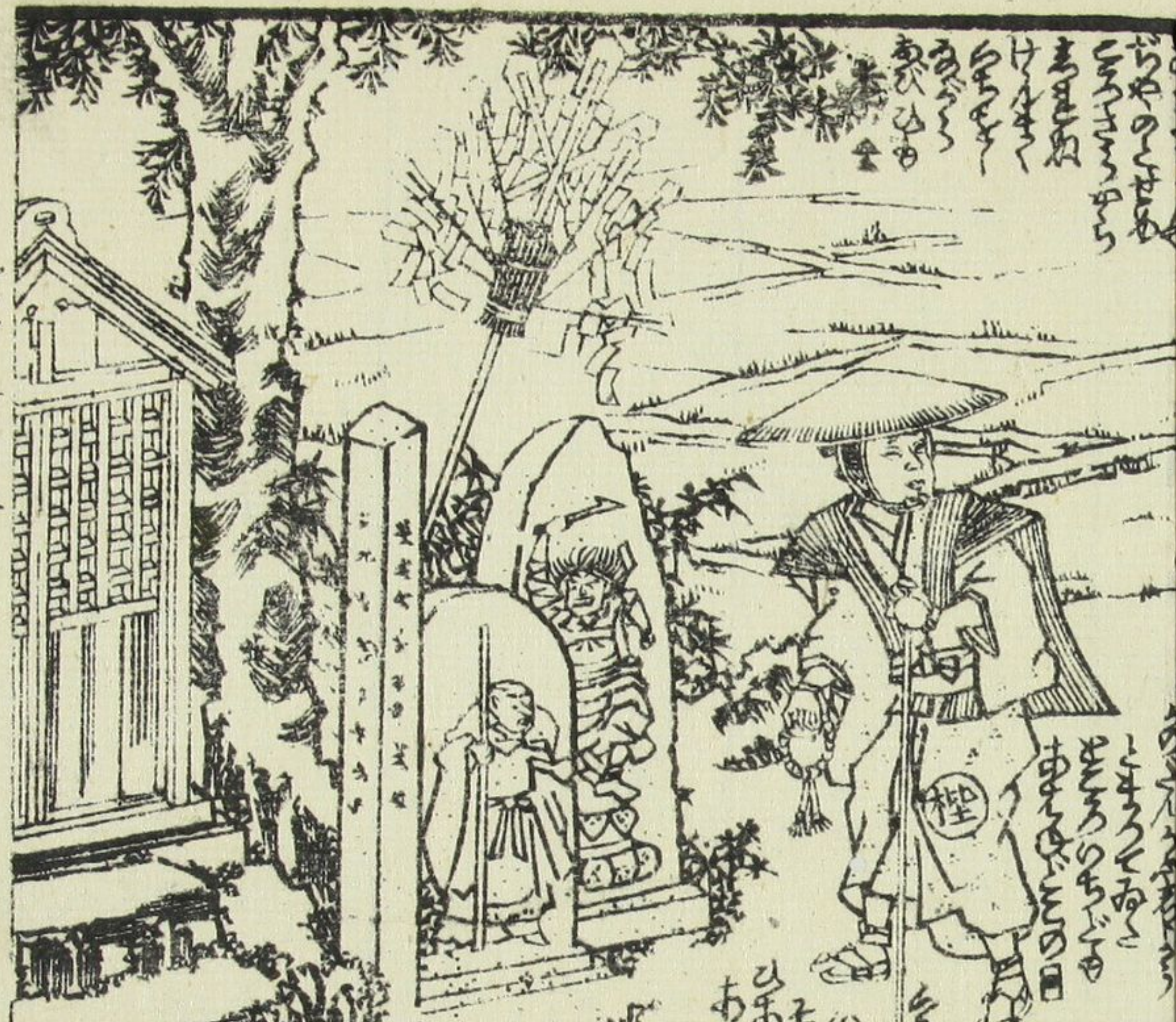
眠氣
 加
 子



鄙洋女
 如兒故率

以連ハ
 同時
 事
 其様

室田



Handwritten Japanese text in vertical columns, likely a commentary or a list of items related to the illustration. The text is written in a cursive style.



Handwritten Japanese text in vertical columns, continuing the commentary or list from the left page. The text is written in a cursive style.

Small vertical text on the left margin of the first page.

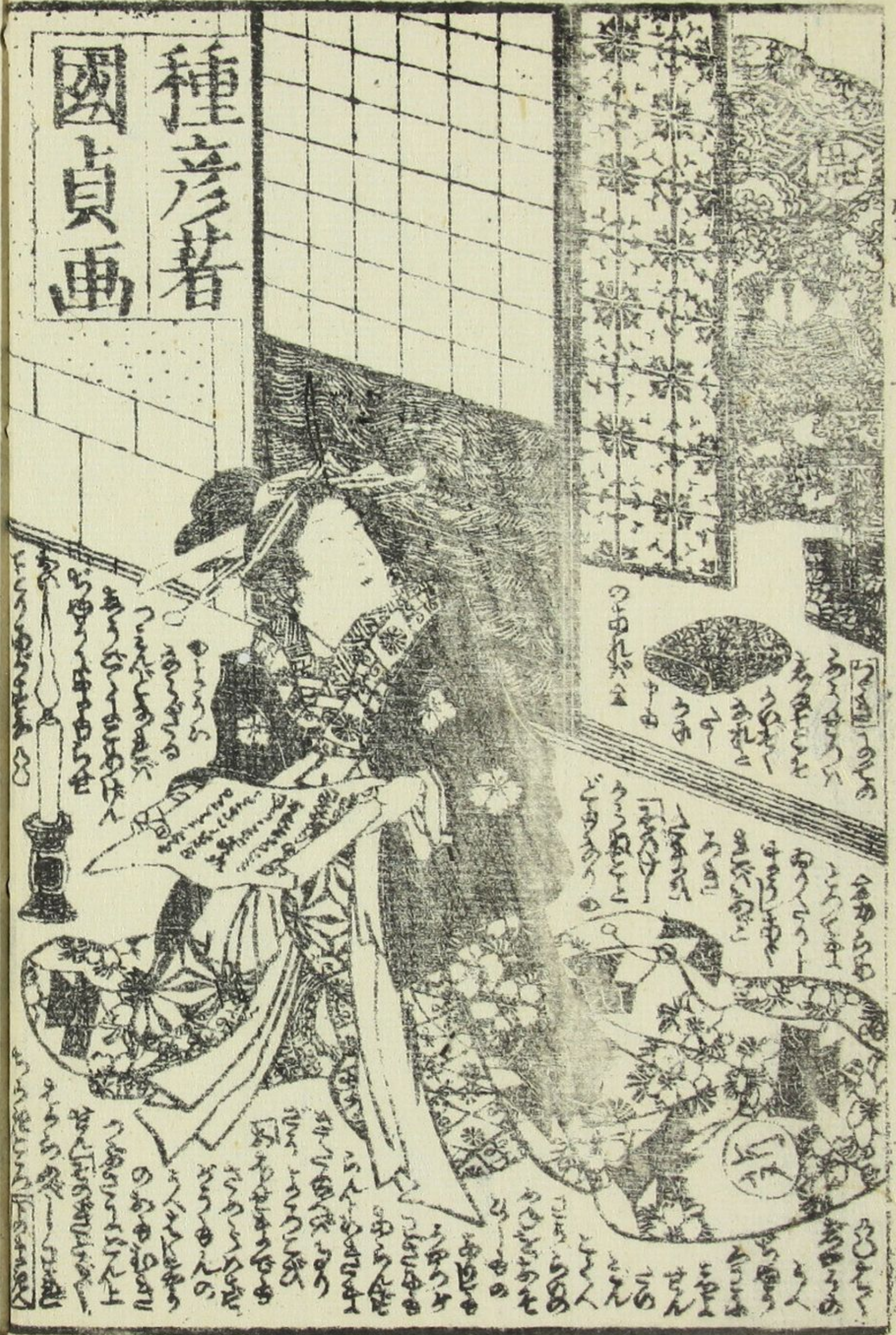
Small vertical text on the right margin of the second page.

Handwritten text in a cursive script, likely a form of shorthand or a specific dialect, filling the upper portion of the left page.



Handwritten text in a cursive script, continuing from the left page, filling the lower portion of the right page.

種彦著
國貞画



柳蔭月朝妻

十編
大尾

山々亭有人作
梅朝樓國貞画

藪黄鷗八幡不知

十編
大尾

山々亭有人作
錦朝樓芳席画

阿玉ヶ池櫛月形

五編
大尾

爲永春水作
梅堂國貞画

八犬傳犬の殺紙

六十柳亭作
大尾國政画

小學行儀法

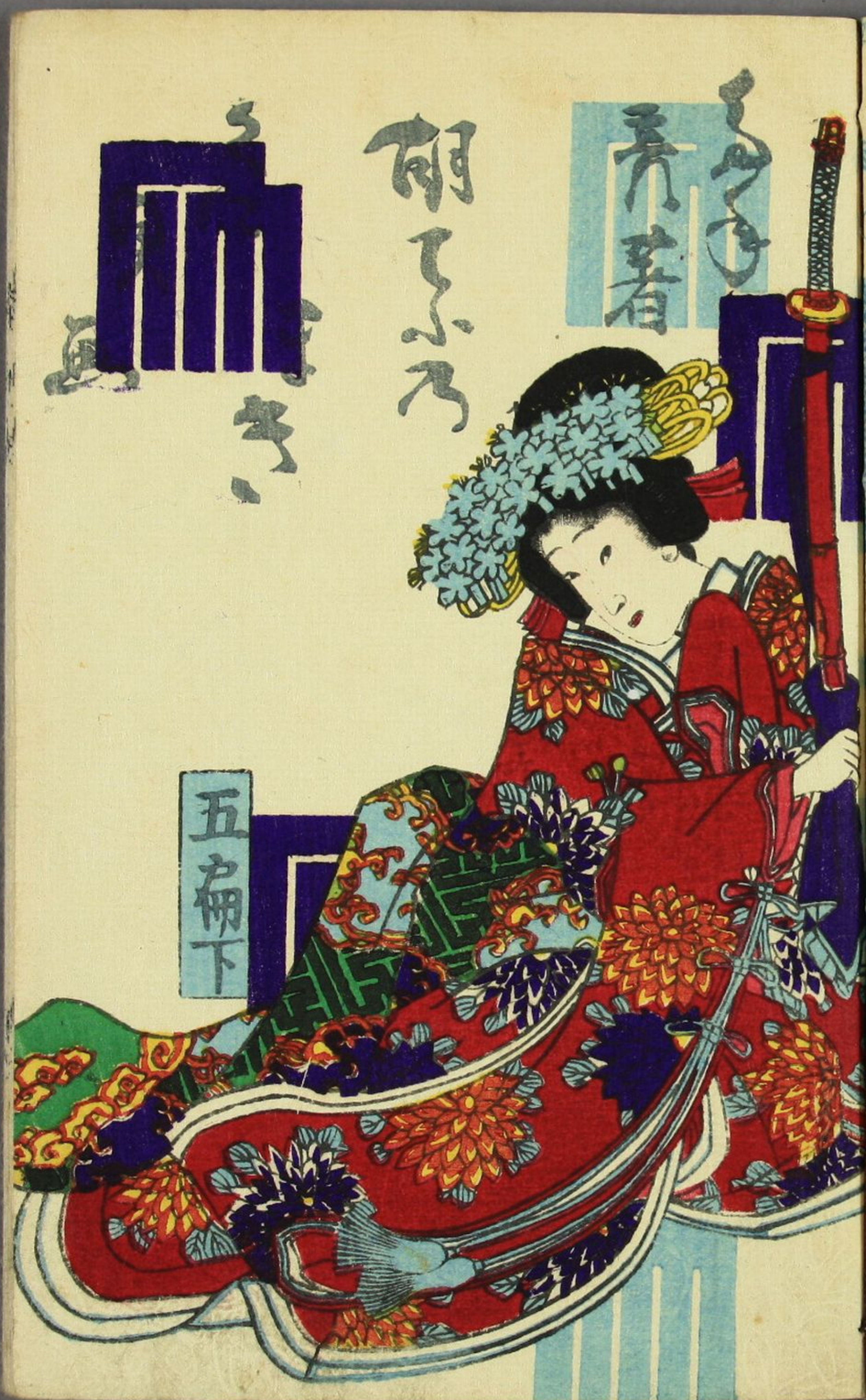
全一冊

實母散

ざんぜんきんご
ふとんちのみち
一切の御業

中橋南傳馬町東側

千葉堂著挿製



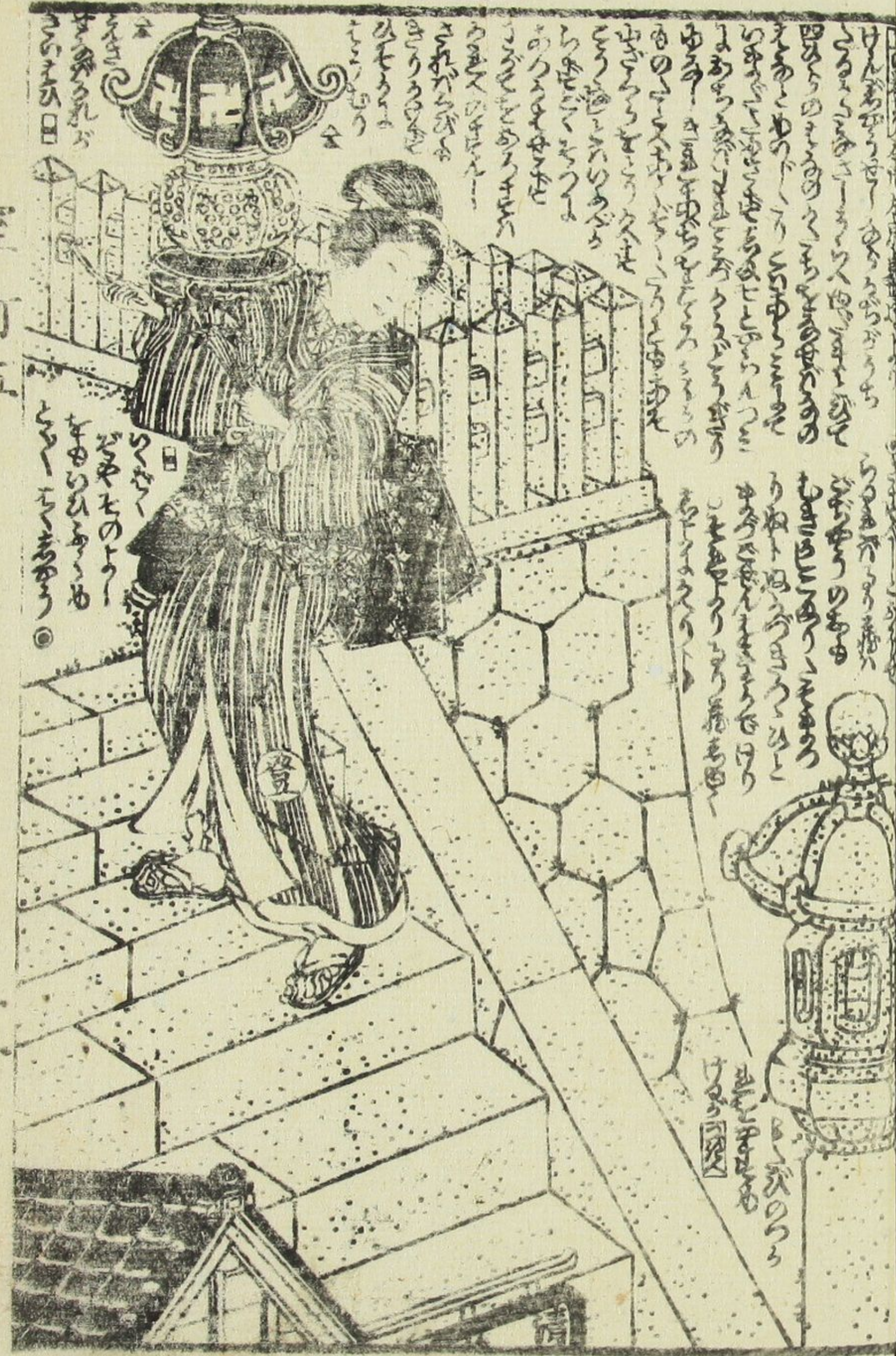
五

胡

美著

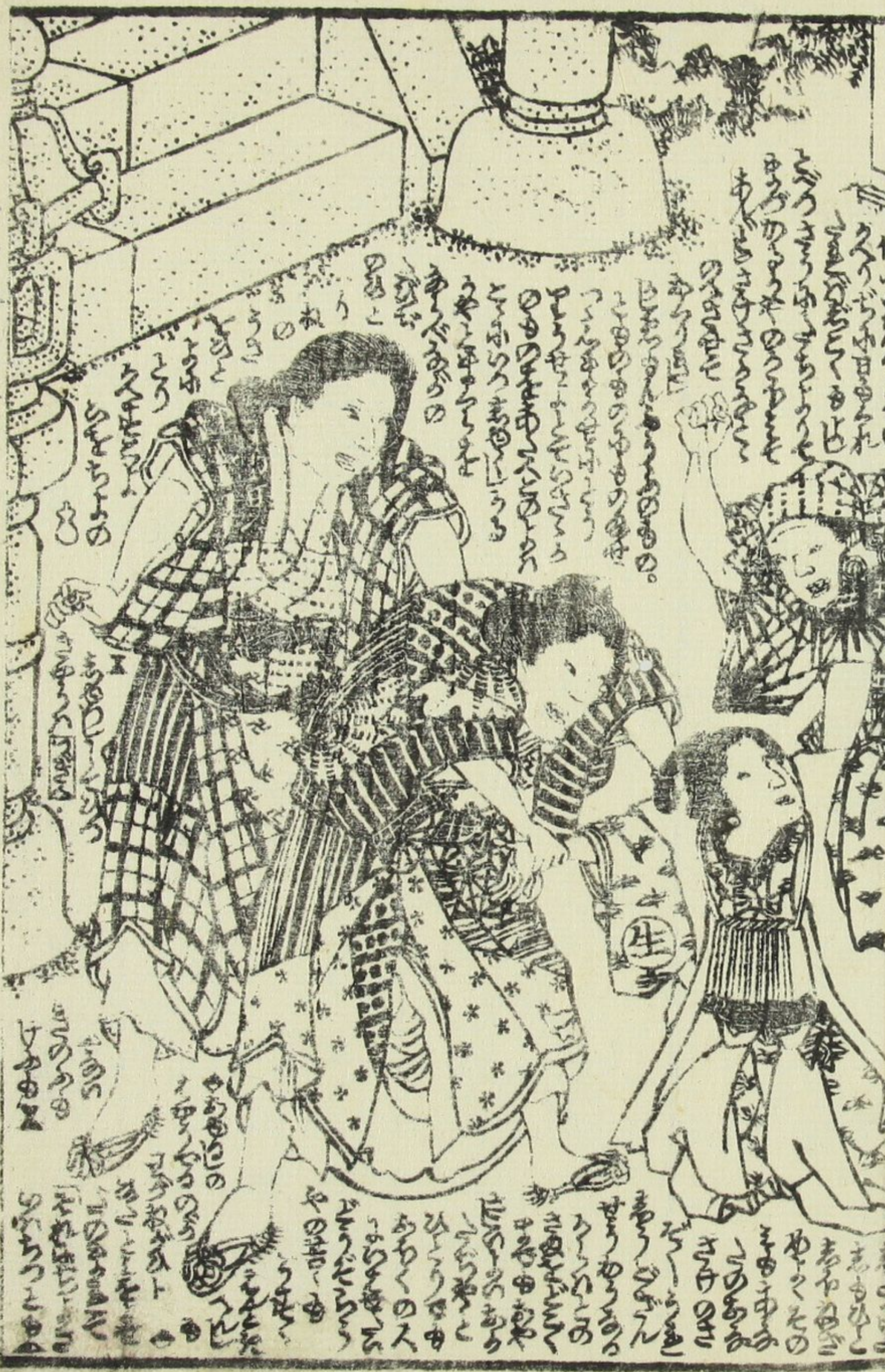
五右衛門下





A large rectangular frame containing handwritten Japanese text in cursive style (sōsho). The text is arranged in several vertical columns. There are also some light blue ink washes or floral motifs interspersed with the text.

A red square seal impression located at the bottom right corner of the page, containing characters in seal script.





Handwritten text in a cursive script, likely a transcription of a story or dialogue. The text is arranged in vertical columns, reading from right to left. It includes various characters and symbols, some of which are repeated or stylized.

Handwritten text in a cursive script, continuing the transcription from the top section. It includes various characters and symbols, some of which are repeated or stylized.

Handwritten text in a cursive script, continuing the transcription from the middle section. It includes various characters and symbols, some of which are repeated or stylized.

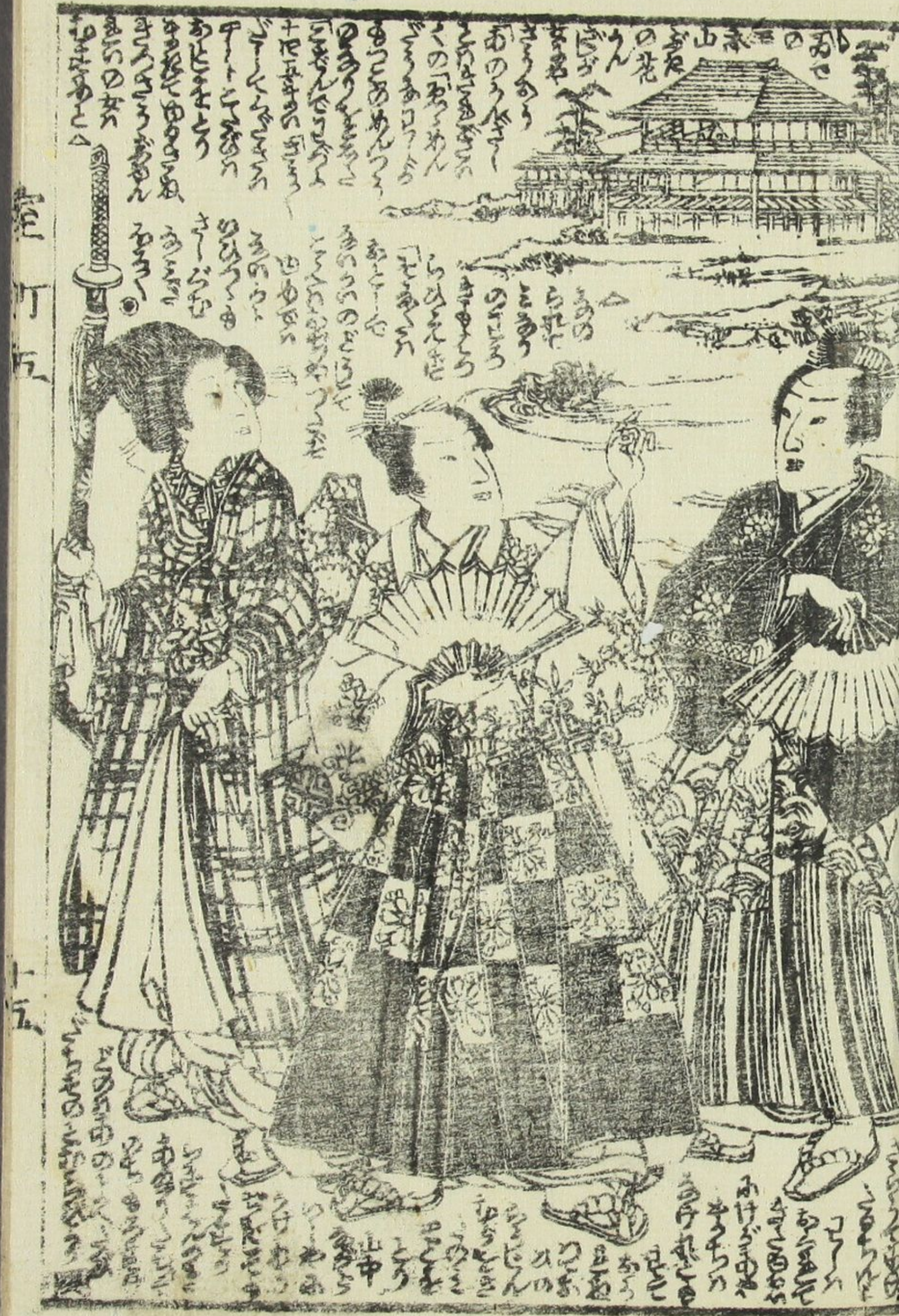
Handwritten text in the upper right section of the page, consisting of several vertical columns of characters.



Handwritten text in the lower right section of the page, continuing the vertical columns from the upper section.



Handwritten text in the lower left section of the page, below the main illustration.



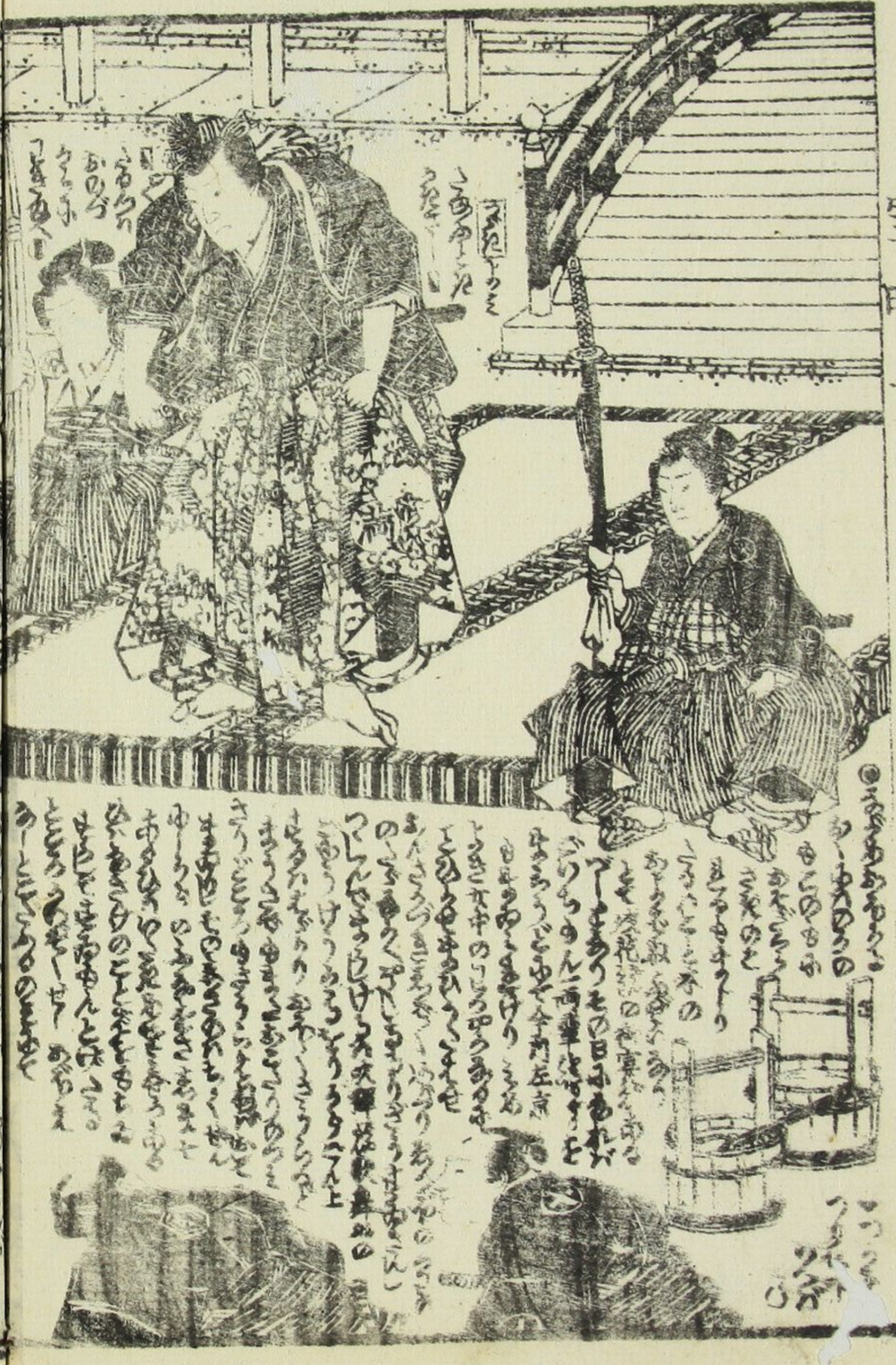
作者此画の原文の思文を補ひ
外題小荷し源氏的面影を真す

田五

田五

田五





Handwritten text in a medieval script, likely Latin or German, located at the top of the right page. The text is arranged in several lines, with some words appearing to be in a different script or dialect.



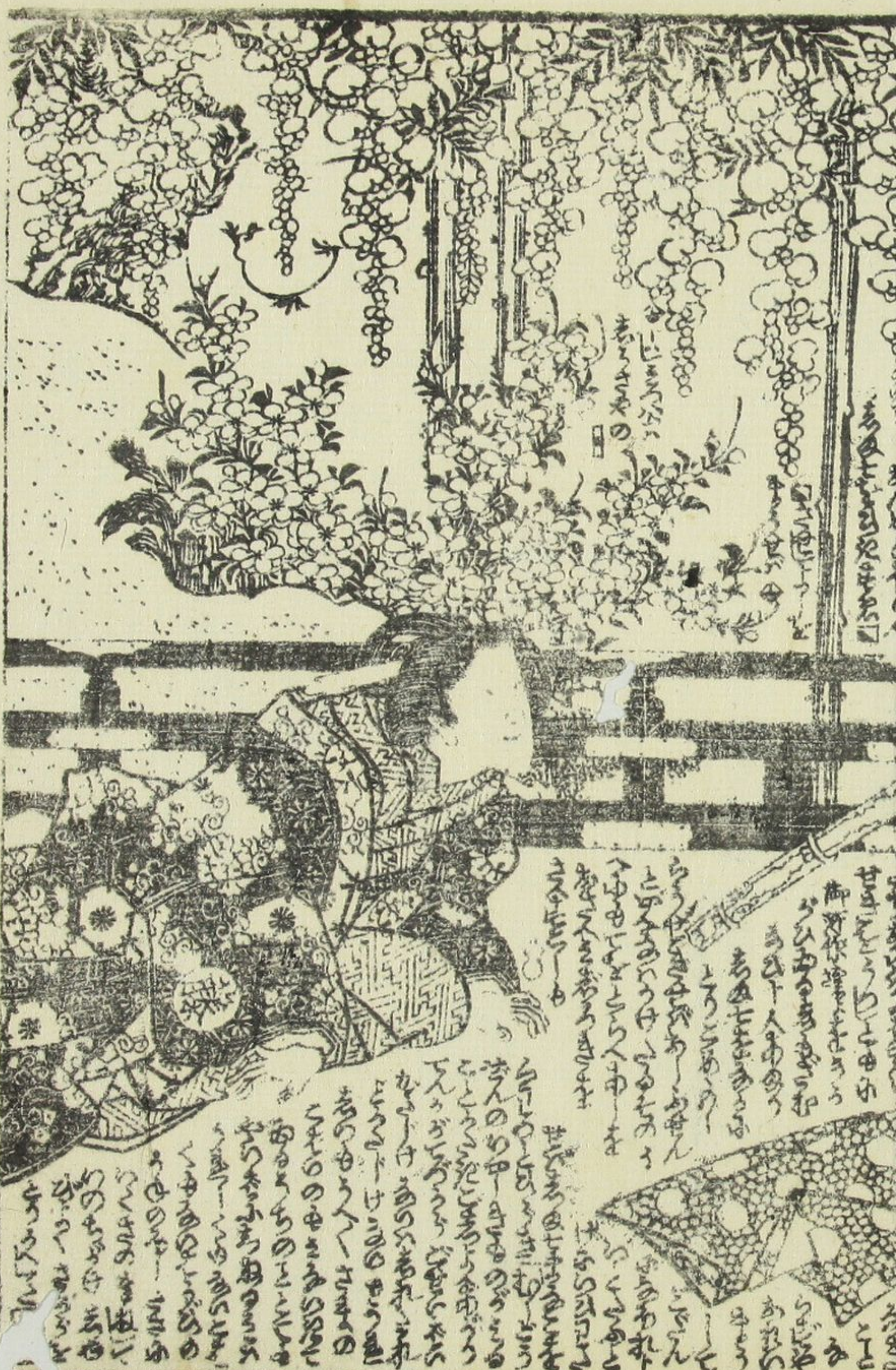
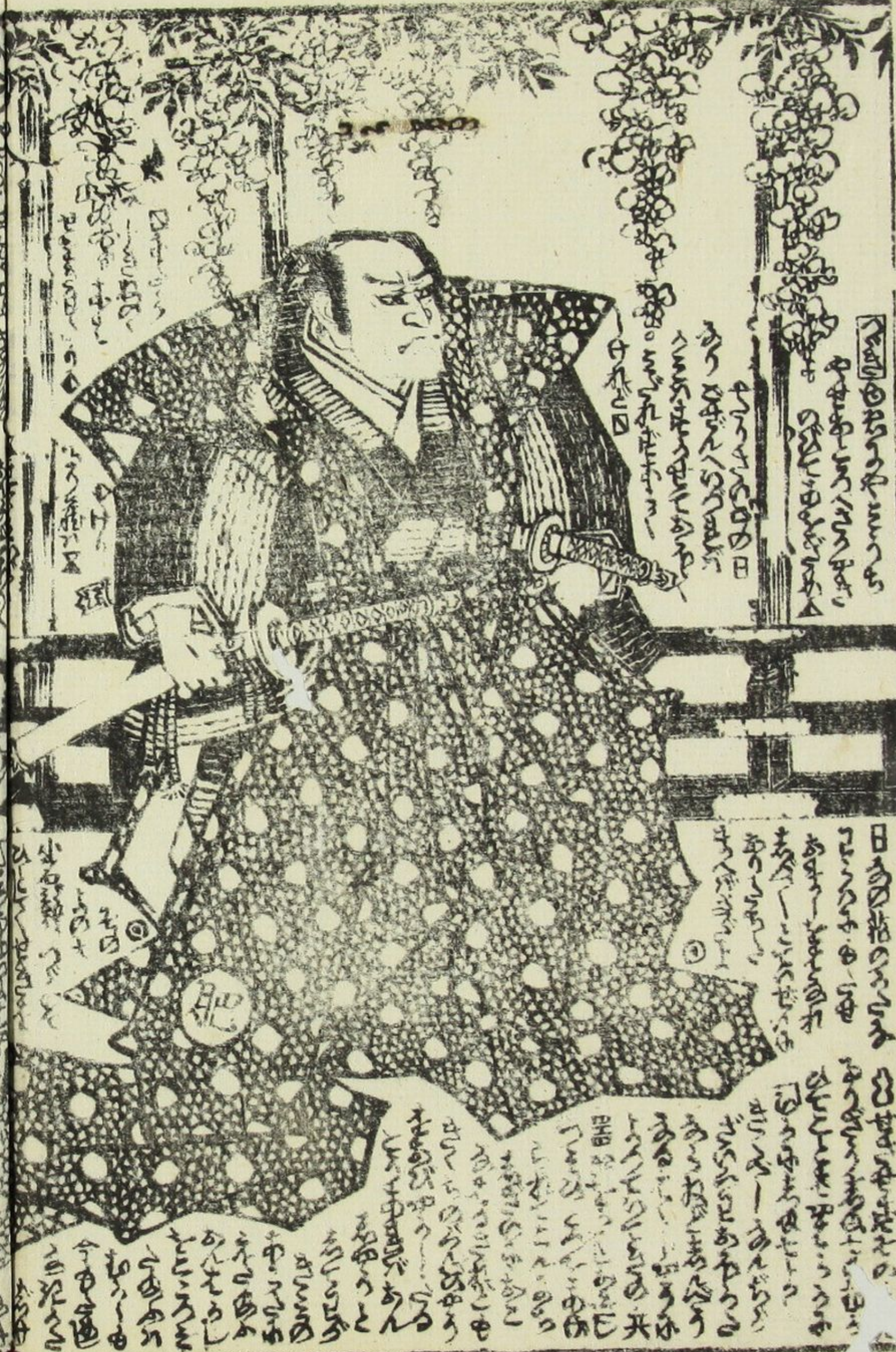
Handwritten text in a medieval script, located on the right side of the right page. The text is arranged in several lines, with some words appearing to be in a different script or dialect.



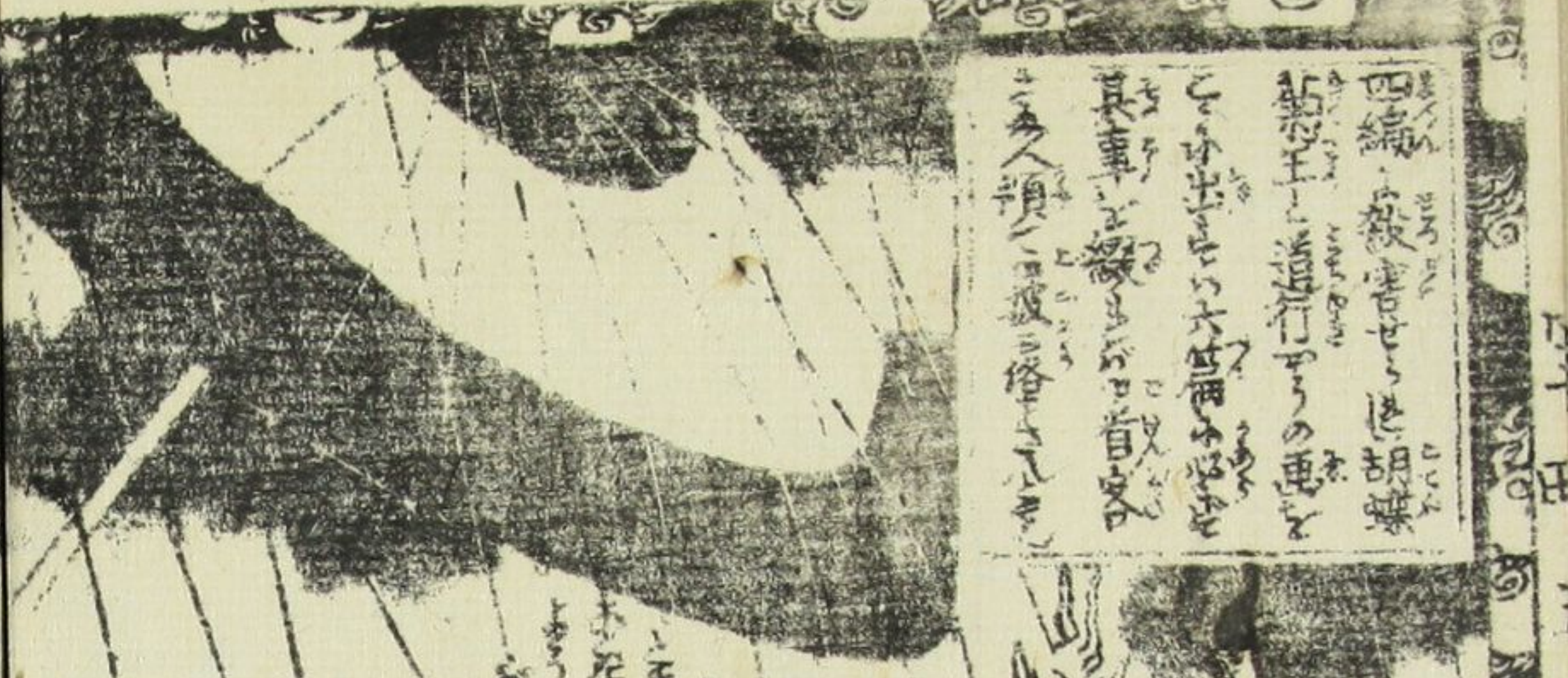
Handwritten text in a medieval script, located at the top of the left page. The text is arranged in several lines, with some words appearing to be in a different script or dialect.



Handwritten text in a medieval script, located on the left side of the left page. The text is arranged in several lines, with some words appearing to be in a different script or dialect.



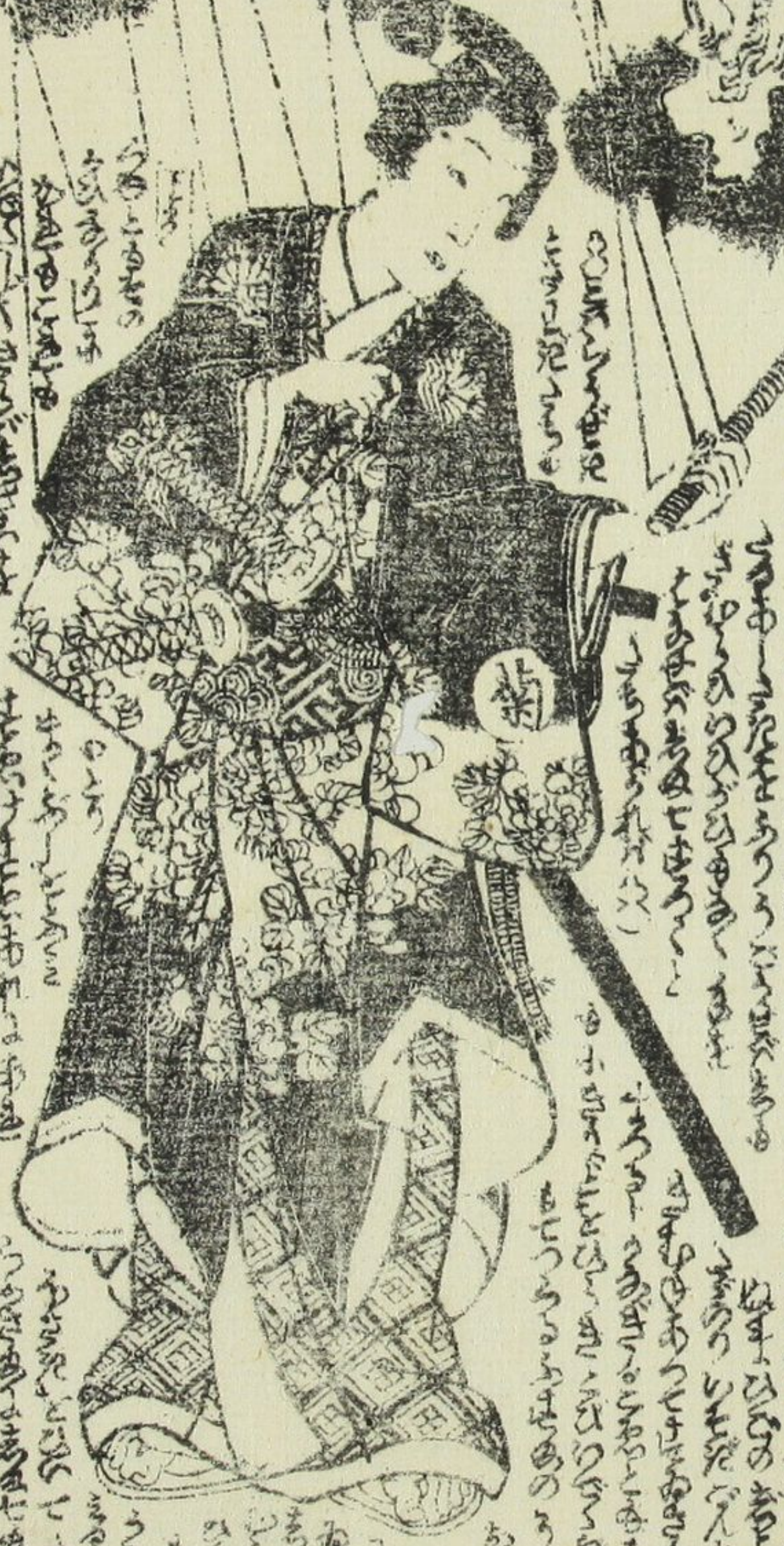
Handwritten text in a box at the top of the right page, containing several lines of script.



Main body of handwritten text on the right page, arranged in columns and interspersed with small illustrations.



Main body of handwritten text on the left page, arranged in columns and interspersed with small illustrations.



Text on the left page, including a small box of text at the top left and a vertical column of text on the far left edge.

地本綿繪團扇問屋

種彦著國貞画



厚化粧萬年嶋田
 十編 春水作
 大尾 國貞画

室町源氏胡蝶卷
 二十編 種彦作
 大尾 國貞画

鼠祠通夜譚
 十編 種彦作
 大尾 國貞画

童謡妙々車
 二十編 種彦作
 大尾 國貞画

薄倂幻日記
 三十編 春水作
 大尾 國貞画

新島九尾傳
 十編 春水作
 大尾 國貞画

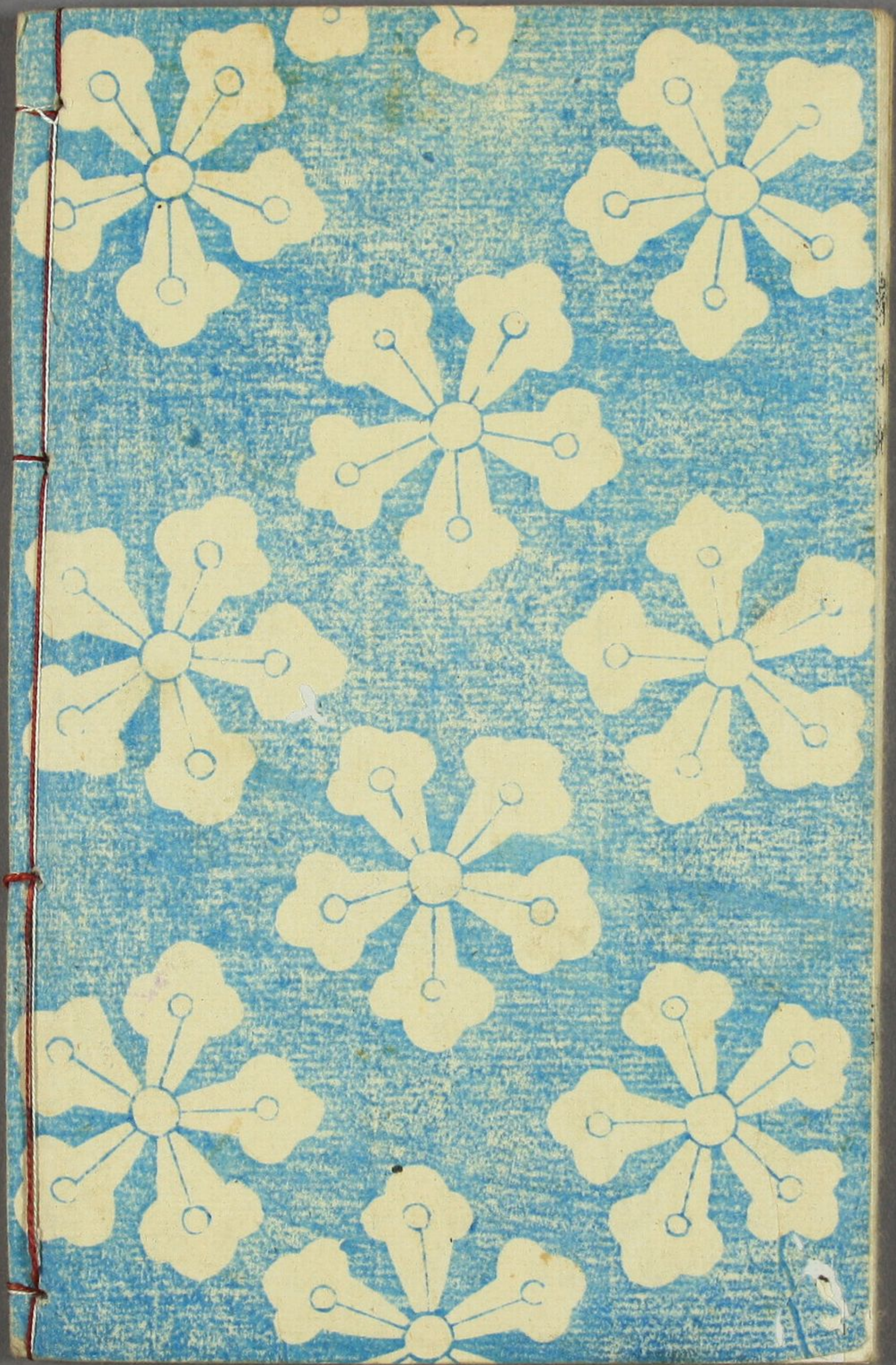
筆海四國問書
 十五編 種彦作
 大尾 國貞画

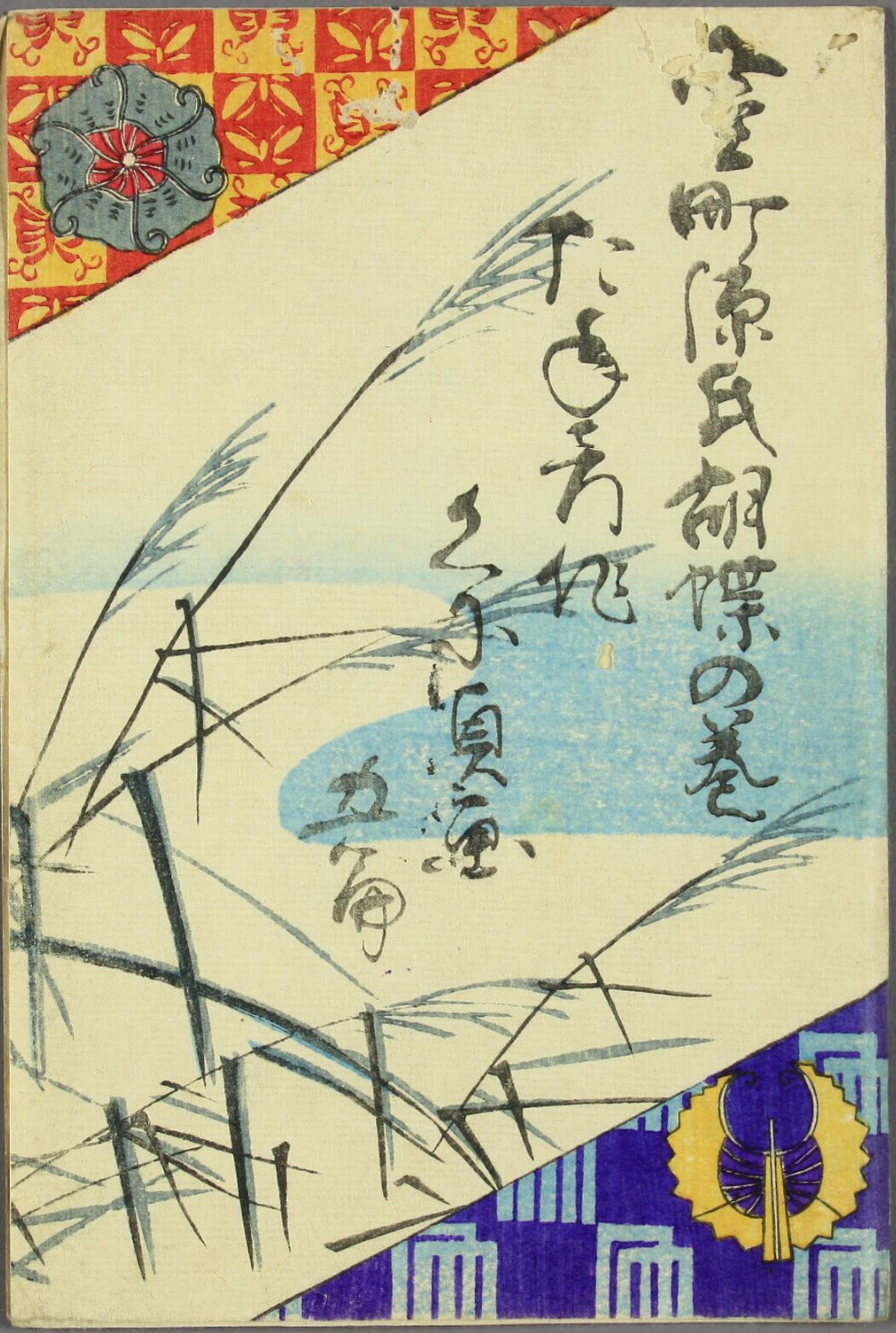
明鴉墨画烟襦袢
 十編 種彦作
 大尾 國貞画

花封蒼玉章
 十編 種彦作
 大尾 國貞画

七姉妹葛飾譚
 十五編 種彦作
 大尾 國貞画

京橋區南傳馬町壹丁目二番地
 出板人 林 吉藏





新刊 源氏物語の巻

たのき地

ふしな海

かみ





小森壽子

