

早 齋  
やしろ本





Handwritten text in Arabic script, consisting of approximately 12 lines of dense cursive writing.

Handwritten text in Arabic script, consisting of approximately 12 lines of dense cursive writing.

بسم الله الرحمن الرحيم  
الحمد لله رب العالمين  
والصلاة والسلام على  
سيدنا محمد وآله الطيبين  
الطاهرين  
الذين هم خاتم النبيين  
مبعوثين في كل جنس  
وملة  
والصلاة والسلام على  
سيدنا محمد وآله الطيبين  
الطاهرين  
الذين هم خاتم النبيين  
مبعوثين في كل جنس  
وملة  
والصلاة والسلام على  
سيدنا محمد وآله الطيبين  
الطاهرين  
الذين هم خاتم النبيين  
مبعوثين في كل جنس  
وملة

بسم الله الرحمن الرحيم

الحمد لله رب العالمين  
والصلاة والسلام على  
سيدنا محمد وآله الطيبين  
الطاهرين  
الذين هم خاتم النبيين  
مبعوثين في كل جنس  
وملة  
والصلاة والسلام على  
سيدنا محمد وآله الطيبين  
الطاهرين  
الذين هم خاتم النبيين  
مبعوثين في كل جنس  
وملة  
والصلاة والسلام على  
سيدنا محمد وآله الطيبين  
الطاهرين  
الذين هم خاتم النبيين  
مبعوثين في كل جنس  
وملة







بسم الله الرحمن الرحيم  
الحمد لله رب العالمين  
والصلاة والسلام على  
سيدنا محمد وآله الطيبين  
الطاهرين

الذين هم خيرة خلقه  
والصالحين  
الذين هم خير  
البرية

والذين هم خير  
الخلق  
والذين هم خير  
العباد  
والذين هم خير  
الخلق  
والذين هم خير  
العباد

بسم الله الرحمن الرحيم

الحمد لله رب العالمين  
والصلاة والسلام على  
سيدنا محمد وآله الطيبين  
الطاهرين  
الذين هم خيرة خلقه  
والصالحين  
الذين هم خير  
البرية  
والذين هم خير  
الخلق  
والذين هم خير  
العباد  
والذين هم خير  
الخلق  
والذين هم خير  
العباد



بسم الله الرحمن الرحيم  
الحمد لله رب العالمين  
والصلاة والسلام على  
سيدنا محمد وآله الطيبين  
الطاهرين

الذين هم خيرة خلقه  
الذين هم ائمة الهدى  
الذين هم اسماؤنا  
الذين هم اركاننا

الذين هم

الذين هم

الذين هم

الذين هم

الذين هم

الذين هم

الذين هم

الذين هم

الذين هم

الذين هم

الذين هم

الذين هم

الذين هم

الذين هم

الذين هم

الذين هم

الذين هم

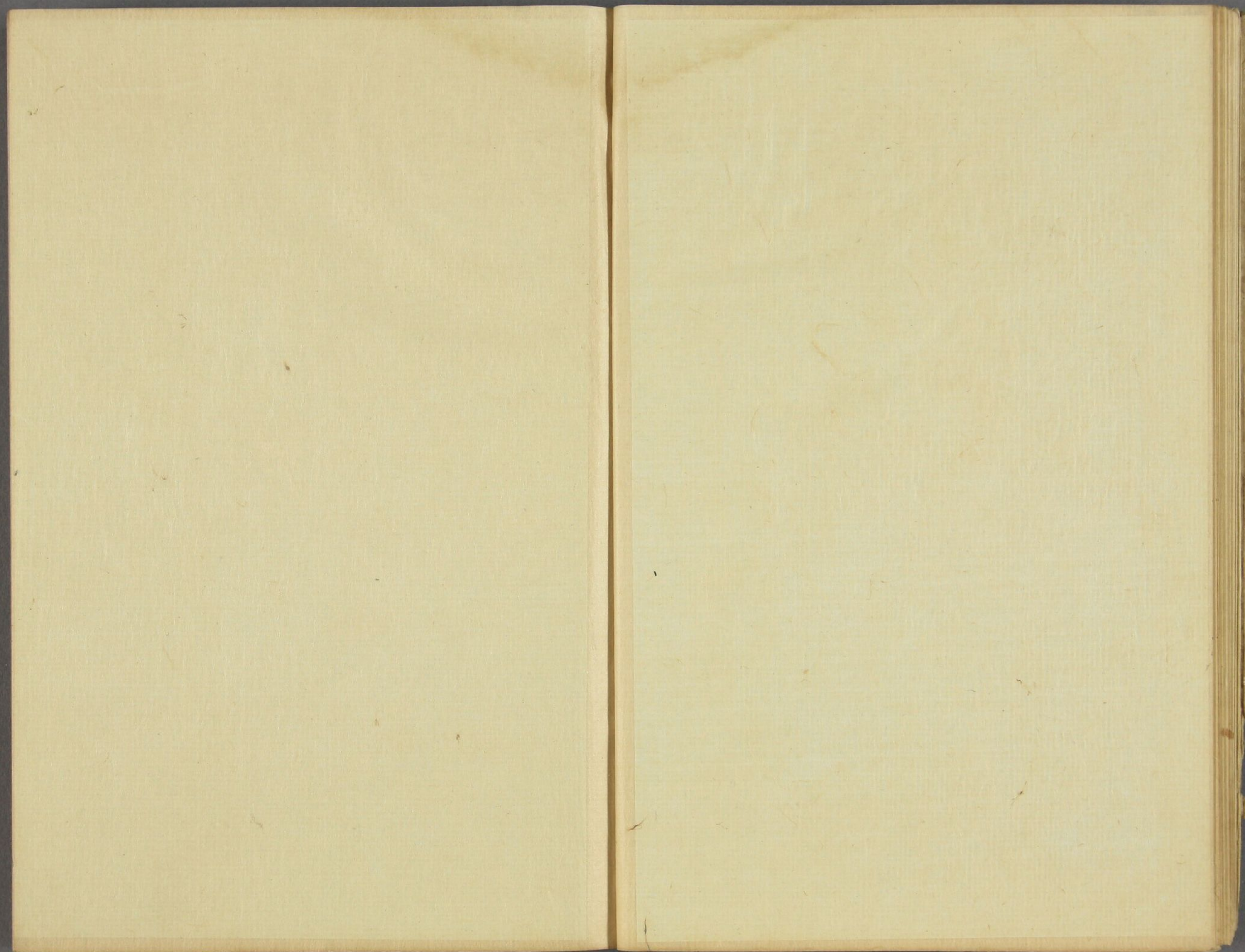
الذين هم













Handwritten text in a cursive script, likely a letter or a page from a manuscript. The text is written in a fluid, connected style across the page.

Handwritten text in a cursive script, likely a letter or a page from a manuscript. The text is written in a fluid, connected style across the page.



Handwritten text in Arabic script, consisting of approximately 12 lines of dense cursive writing.

Handwritten text in Arabic script, consisting of approximately 12 lines of dense cursive writing.

Handwritten text in a cursive script, likely a letter or a page from a manuscript. The text is written in a fluid, connected style across approximately 12 lines.

Handwritten text in a cursive script, likely a letter or a page from a manuscript. The text is written in a fluid, connected style across approximately 12 lines.

Handwritten text in a cursive script, likely a letter or a page from a manuscript. The text is written in a dark ink on aged, yellowish paper. The script is dense and fills most of the page.

Handwritten text in a cursive script, likely a letter or a page from a manuscript. The text is written in a dark ink on aged, yellowish paper. The script is dense and fills most of the page.

Handwritten text in Arabic script, likely a religious or philosophical treatise. The text is written in a cursive style and spans the width of the page.

Handwritten text in Arabic script, likely a religious or philosophical treatise. The text is written in a cursive style and spans the width of the page.

Handwritten text in a cursive script, likely a historical document or manuscript. The text is written in a dark ink on aged, yellowish paper. It consists of approximately 15 lines of text, starting with a large initial letter 'A' and ending with a period. The script is highly stylized and difficult to decipher without a key.

Handwritten text in a cursive script, likely a historical document or manuscript. The text is written in a dark ink on aged, yellowish paper. It consists of approximately 15 lines of text, starting with a large initial letter 'A' and ending with a period. The script is highly stylized and difficult to decipher without a key.

Handwritten text in a cursive script, likely a historical document or letter. The text is written in a dark ink on aged, yellowish paper. It consists of approximately 15 lines of text, starting with a small initial 'p' on the left margin. The script is dense and characteristic of 17th or 18th-century handwriting.

Handwritten text in a cursive script, continuing from the previous page. The text is written in a dark ink on aged, yellowish paper. It consists of approximately 15 lines of text, starting with a small initial 'p' on the left margin. The script is dense and characteristic of 17th or 18th-century handwriting.

Handwritten text in Arabic script, likely a religious or philosophical treatise. The text is written in a cursive style and spans the width of the page.

Handwritten text in Arabic script, likely a religious or philosophical treatise. The text is written in a cursive style and spans the width of the page.

Handwritten text in a cursive script, likely a letter or a page from a manuscript. The text is written in a dark ink on aged, yellowish paper. It consists of approximately 12 lines of text, starting with a large initial letter. The script is highly stylized and difficult to decipher without a key.

Handwritten text in a cursive script, likely a letter or a page from a manuscript. The text is written in a dark ink on aged, yellowish paper. It consists of approximately 12 lines of text, starting with a large initial letter. The script is highly stylized and difficult to decipher without a key.



Handwritten text in a cursive script, likely a letter or a page from a manuscript. The text is written in a dark ink on aged, yellowish paper. It consists of approximately 15 lines of text, starting with a small initial mark on the left. The script is fluid and characteristic of 17th or 18th-century handwriting.

Handwritten text in a cursive script, continuing from the previous page. The text is written in a dark ink on aged, yellowish paper. It consists of approximately 15 lines of text, starting with a small initial mark on the left. The script is fluid and characteristic of 17th or 18th-century handwriting.







Handwritten text in a cursive script, likely a letter or a page from a manuscript. The text is written in a fluid, connected style across approximately 12 lines.

Handwritten text in a cursive script, likely a letter or a page from a manuscript. The text is written in a fluid, connected style across approximately 12 lines.



كتاب في معرفة حقايق العلوم  
 وادراك حقايق الحكماء

في بيان حقايق العلوم  
 وادراك حقايق الحكماء  
 في بيان حقايق العلوم  
 وادراك حقايق الحكماء

كتاب في معرفة حقايق العلوم  
 وادراك حقايق الحكماء

بسم الله الرحمن الرحيم  
الحمد لله رب العالمين  
والصلاة والسلام على  
سيدنا محمد وآله الطيبين  
الطاهرين  
الذين بعثهم في  
أمة من أمة  
ليبين للناس  
الآيات التي  
بين أيديهم  
ولعلهم يتقون  
والله أعلم بالصواب  
والصلاة والسلام على  
سيدنا محمد وآله الطيبين  
الطاهرين  
الذين بعثهم في  
أمة من أمة  
ليبين للناس  
الآيات التي  
بين أيديهم  
ولعلهم يتقون  
والله أعلم بالصواب

الحمد لله رب العالمين  
والصلاة والسلام على  
سيدنا محمد وآله الطيبين  
الطاهرين  
الذين بعثهم في  
أمة من أمة  
ليبين للناس  
الآيات التي  
بين أيديهم  
ولعلهم يتقون  
والله أعلم بالصواب  
والصلاة والسلام على  
سيدنا محمد وآله الطيبين  
الطاهرين  
الذين بعثهم في  
أمة من أمة  
ليبين للناس  
الآيات التي  
بين أيديهم  
ولعلهم يتقون  
والله أعلم بالصواب

الحمد لله رب العالمين  
والصلاة والسلام على  
سيدنا محمد وآله الطيبين  
الطاهرين  
الذين بعثهم في  
أمة من أمة  
ليبين للناس  
الآيات التي  
بين أيديهم  
ولعلهم يتقون  
والله أعلم بالصواب  
والصلاة والسلام على  
سيدنا محمد وآله الطيبين  
الطاهرين  
الذين بعثهم في  
أمة من أمة  
ليبين للناس  
الآيات التي  
بين أيديهم  
ولعلهم يتقون  
والله أعلم بالصواب



Handwritten text in Arabic script, likely a religious or philosophical treatise. The text is written in a cursive style and spans the width of the page. It begins with a large initial letter, possibly 'B' or 'Ba', and continues with several lines of dense script. The ink is dark and the paper shows signs of age.

Handwritten text in Arabic script, continuing the text from the previous page. It is written in a cursive style and spans the width of the page. The text is dense and fills most of the page area. The ink is dark and the paper shows signs of age.

Handwritten text in Arabic script, likely a religious or philosophical treatise. The text is written in a cursive style and spans the width of the page. It begins with a small heading or initial line at the top left, followed by several lines of dense script. The ink is dark and the paper shows signs of age and wear.

Handwritten text in Arabic script, continuing the text from the previous page. The script is consistent in style and density. The text is arranged in a single column across the page, with some lines starting with larger, decorative initials. The overall appearance is that of a well-preserved but aged manuscript.





Handwritten text in Arabic script, likely a religious or philosophical treatise, written in a cursive style. The text is arranged in approximately 15 horizontal lines across the page.

Handwritten text in Arabic script, continuing the text from the previous page. The text is arranged in approximately 15 horizontal lines across the page.

Handwritten text in Arabic script, likely a religious or philosophical treatise. The text is written in a cursive style and spans the width of the page.

Handwritten text in Arabic script, continuing the text from the previous page. The text is written in a cursive style and spans the width of the page.

Handwritten text in a cursive script, likely a letter or a page from a manuscript. The text is written in a fluid, connected style across approximately 12 lines.

Handwritten text in a cursive script, likely a letter or a page from a manuscript. The text is written in a fluid, connected style across approximately 12 lines.

Handwritten text in a cursive script, likely a letter or a page from a manuscript. The text is written in a fluid, connected style across approximately 12 lines.

Handwritten text in a cursive script, continuing from the previous page. The text is written in a fluid, connected style across approximately 12 lines.



Handwritten text in a cursive script, likely a letter or a page from a manuscript. The text is written in a dark ink on aged, yellowish paper. The script is dense and fills most of the page.

Handwritten text in a cursive script, likely a letter or a page from a manuscript. The text is written in a dark ink on aged, yellowish paper. The script is dense and fills most of the page.



Handwritten text in a cursive script, likely a historical document or letter. The text is written in a dark ink on aged, yellowish paper. It consists of approximately 15 lines of text, starting with a large initial letter. The script is dense and characteristic of early modern European handwriting.

Handwritten text in a cursive script, likely a historical document or letter. The text is written in a dark ink on aged, yellowish paper. It consists of approximately 15 lines of text, starting with a large initial letter. The script is dense and characteristic of early modern European handwriting.

Handwritten text in Arabic script, likely a list or account, written in a cursive style. The text is arranged in approximately 15 horizontal lines across the page.

Handwritten text in Arabic script, likely a list or account, written in a cursive style. The text is arranged in approximately 15 horizontal lines across the page.

Handwritten text in a cursive script, likely a letter or a page from a manuscript. The text is written in a fluid, connected style across approximately 12 lines.

Handwritten text in a cursive script, likely a letter or a page from a manuscript. The text is written in a fluid, connected style across approximately 12 lines.

Handwritten text in Arabic script, likely a religious or philosophical treatise, written in a cursive style. The text is arranged in approximately 12 horizontal lines across the page.

Handwritten text in Arabic script, continuing the text from the previous page. The script is dense and fills most of the page area.

Handwritten text in a cursive script, likely a letter or a page from a manuscript. The text is written in a fluid, connected style across approximately 15 lines.

Handwritten text in a cursive script, likely a letter or a page from a manuscript. The text is written in a fluid, connected style across approximately 15 lines.

Handwritten text in a cursive script, likely a letter or a page from a manuscript. The text is written in a fluid, connected style across approximately 12 lines.

Handwritten text in a cursive script, likely a letter or a page from a manuscript. The text is written in a fluid, connected style across approximately 12 lines.













Handwritten text in Arabic script, top line of the right page.

Handwritten text in Arabic script, second line of the right page.

Main body of handwritten text in Arabic script on the right page.

Main body of handwritten text in Arabic script on the left page.

Handwritten text in Arabic script, likely a title or introductory passage.

Handwritten text in Arabic script, continuing the narrative or discourse.

Handwritten text in Arabic script, continuing the narrative or discourse.

Handwritten text in Arabic script, continuing the narrative or discourse.

Handwritten text in Arabic script, consisting of approximately 12 lines of dense cursive writing.

Handwritten text in Arabic script, consisting of approximately 12 lines of dense cursive writing.



Handwritten text in a cursive script, likely a letter or a personal note, written on the left page of an open book. The text is dense and fills most of the page.

Handwritten text in a cursive script, likely a letter or a personal note, written on the right page of an open book. The text is dense and fills most of the page.

Handwritten text in a cursive script, likely a historical document or letter, covering the left page of the manuscript.

Handwritten text in a cursive script, likely a historical document or letter, covering the right page of the manuscript.

Handwritten text in Arabic script, consisting of approximately 15 lines of dense cursive writing.

Handwritten text in Arabic script, consisting of approximately 15 lines of dense cursive writing.

البرهان على ان كل عدد طبيعي هو مجموع اربعة اعداد  
مربعات. هذا هو ما يسمى بـ "نظرية لافرانس" وقد اثبتها  
كارل فايفرماخ في عام 1641. البرهان يعتمد على نظرية  
الاشكال التربيعية ونظرية اقليدس عن اعداد  
مربعة. البرهان طويل ومعقد ويتطلب معرفة متقدمة  
في الجبر والهندسة. البرهان يثبت ان كل عدد طبيعي  
من الاكبر من اربعة هو مجموع اربعة اعداد مربعة.  
البرهان يعتمد على نظرية اقليدس عن اعداد مربعة  
والتي تنص على ان كل عدد طبيعي هو مجموع اربعة  
اعداد مربعة. البرهان يعتمد على نظرية اقليدس  
عن اعداد مربعة والتي تنص على ان كل عدد طبيعي  
هو مجموع اربعة اعداد مربعة. البرهان يعتمد على  
نظرية اقليدس عن اعداد مربعة والتي تنص على ان كل  
عدد طبيعي هو مجموع اربعة اعداد مربعة.

البرهان على ان كل عدد طبيعي هو مجموع اربعة اعداد  
مربعات. هذا هو ما يسمى بـ "نظرية لافرانس" وقد اثبتها  
كارل فايفرماخ في عام 1641. البرهان يعتمد على نظرية  
الاشكال التربيعية ونظرية اقليدس عن اعداد  
مربعة. البرهان طويل ومعقد ويتطلب معرفة متقدمة  
في الجبر والهندسة. البرهان يثبت ان كل عدد طبيعي  
من الاكبر من اربعة هو مجموع اربعة اعداد مربعة.  
البرهان يعتمد على نظرية اقليدس عن اعداد مربعة  
والتي تنص على ان كل عدد طبيعي هو مجموع اربعة  
اعداد مربعة. البرهان يعتمد على نظرية اقليدس  
عن اعداد مربعة والتي تنص على ان كل عدد طبيعي  
هو مجموع اربعة اعداد مربعة. البرهان يعتمد على  
نظرية اقليدس عن اعداد مربعة والتي تنص على ان كل  
عدد طبيعي هو مجموع اربعة اعداد مربعة.

Handwritten text in Arabic script, likely a religious or philosophical treatise. The text is written in a cursive style and spans the width of the page. It begins with a large initial letter 'ب' (Ba) and continues with several lines of text. The script is dense and fills most of the page area.

Handwritten text in Arabic script, continuing the text from the previous page. It starts with a large initial letter 'ب' (Ba) and continues with several lines of text. The script is dense and fills most of the page area.

Handwritten text in a cursive script, likely a letter or a page from a manuscript. The text is written in a fluid, connected style across approximately 12 lines.

Handwritten text in a cursive script, likely a letter or a page from a manuscript. The text is written in a fluid, connected style across approximately 12 lines.

Handwritten text in Arabic script, consisting of approximately 15 lines of dense cursive writing.

Handwritten text in Arabic script, consisting of approximately 15 lines of dense cursive writing.

Handwritten text in a cursive script, likely a letter or a page from a manuscript. The text is written in a fluid, connected style across approximately 12 lines.

Handwritten text in a cursive script, continuing from the previous page. The text is written in a fluid, connected style across approximately 12 lines.







Handwritten text in Arabic script, likely a religious or philosophical treatise. The text is written in a cursive style and spans the width of the page.

Handwritten text in Arabic script, likely a religious or philosophical treatise. The text is written in a cursive style and spans the width of the page.



