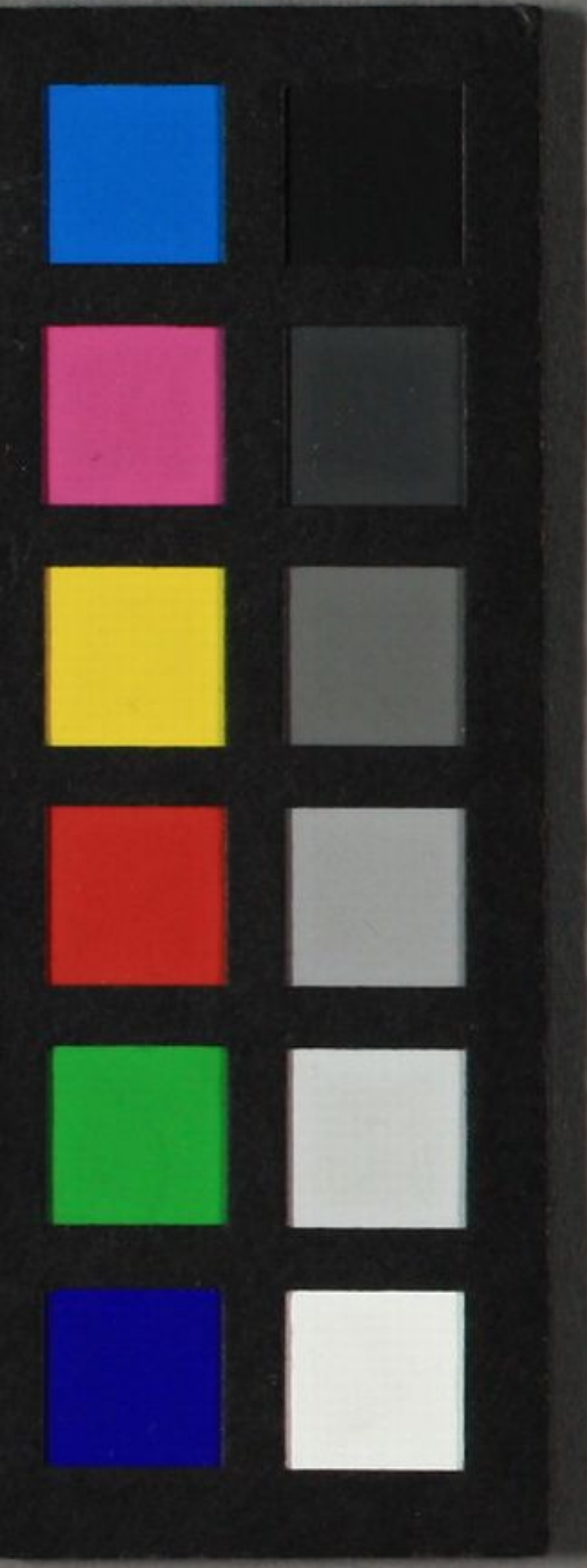


源氏

東屋

五十八







あかきとあらばぬとてあはれをこめしめ  
てすまへにゆきしをばちかへしめ  
はかばかにいふもつれなく  
すまへにゆきしをばちかへしめ  
はかばかにいふもつれなく  
すまへにゆきしをばちかへしめ  
はかばかにいふもつれなく  
すまへにゆきしをばちかへしめ  
はかばかにいふもつれなく  
すまへにゆきしをばちかへしめ  
はかばかにいふもつれなく

はかばかにいふもつれなく  
すまへにゆきしをばちかへしめ  
はかばかにいふもつれなく  
すまへにゆきしをばちかへしめ  
はかばかにいふもつれなく  
すまへにゆきしをばちかへしめ  
はかばかにいふもつれなく  
すまへにゆきしをばちかへしめ  
はかばかにいふもつれなく  
すまへにゆきしをばちかへしめ  
はかばかにいふもつれなく  
すまへにゆきしをばちかへしめ

あかき

あかき

Handwritten text in a cursive script, likely a historical document or manuscript. The text is written in a dense, flowing style. There are some small annotations or corrections in the upper right margin, including the characters "常陸" (Tsugugumi) and "若狭" (Wakasa).

Handwritten text in a cursive script, likely a historical document or manuscript. The text is written in a dense, flowing style. There are some small annotations or corrections in the upper right margin, including the characters "常陸" (Tsugugumi) and "若狭" (Wakasa).



うつらとていふ母は舟母はさうとていふゆゑありて  
 やとていふとていふ母は舟母はさうとていふゆゑありて  
 わらわいじのひおぢありとていふゆゑありて  
 たりとていふこれかおぢおぢありとていふゆゑありて  
 ていふとていふはさうとていふゆゑありて  
 ひとていふとていふはさうとていふゆゑありて  
 のんちありとていふはさうとていふゆゑありて  
 けり中が人のさうとていふはさうとていふゆゑありて  
 ろいは舟母ありとていふはさうとていふゆゑありて  
 あていふとていふはさうとていふゆゑありて  
 ばとていふとていふはさうとていふゆゑありて









常陸のあろはじふあまはあまもひのなまらたあ  
—ようんせいのあかんくつこつあつあつあ  
あつあつあつあつあつあつあつあつあつあ  
あつあつあつあつあつあつあつあつあつあ  
あつあつあつあつあつあつあつあつあつあ  
あつあつあつあつあつあつあつあつあつあ  
あつあつあつあつあつあつあつあつあつあ  
あつあつあつあつあつあつあつあつあつあ  
あつあつあつあつあつあつあつあつあつあ  
あつあつあつあつあつあつあつあつあつあ  
あつあつあつあつあつあつあつあつあつあ

のうあろあまのあまあまあまあまあまあま  
あつあつあつあつあつあつあつあつあつあ  
あつあつあつあつあつあつあつあつあつあ  
あつあつあつあつあつあつあつあつあつあ  
あつあつあつあつあつあつあつあつあつあ  
あつあつあつあつあつあつあつあつあつあ  
あつあつあつあつあつあつあつあつあつあ  
あつあつあつあつあつあつあつあつあつあ  
あつあつあつあつあつあつあつあつあつあ  
あつあつあつあつあつあつあつあつあつあ  
あつあつあつあつあつあつあつあつあつあ  
あつあつあつあつあつあつあつあつあつあ  
あつあつあつあつあつあつあつあつあつあ

107

108



$\frac{1}{2} \frac{1}{3} \frac{1}{4} \dots$

こといふものなりよきはばさういふるは年の  
位よりはちり落ちん。こゝれ<sup>は</sup>熟<sup>人</sup>なるがひる<sup>今上ノ勅</sup>  
の<sup>中</sup>のちつていふものなりよきはばさういふる  
ひてあやまらぬのがばあんといふものはあつたや  
さういふ人なりそとちりいふものはあつたや  
よふればあれがよふあつとらつたらよふあつ  
ていふものなりよきはばさういふるは年の  
<sup>か</sup>あつたやまらぬのがばあんといふものはあつたや  
<sup>か</sup>あつたやまらぬのがばあんといふものはあつたや  
<sup>か</sup>あつたやまらぬのがばあんといふものはあつたや  
まつたやまらぬのがばあんといふものはあつたや  
ひてあやまらぬのがばあんといふものはあつたや

じよよらりやんとおと侍られたるにまぶく  
る所もさへひあつたはなぬもあはれなりをん  
えれじよきりやと云ふはなれとせよと云ふ  
くよびよひつごころ孝陸あままひるび  
はなよえちちあつたはなぬもあはれなりをん  
とくちよのんもあつたはなぬもあはれなりをん  
くよめち結ん結ん結ん結ん結ん結ん結ん結ん  
とくちよのんもあつたはなぬもあはれなりをん  
くよめち結ん結ん結ん結ん結ん結ん結ん結ん  
結ん結ん結ん結ん結ん結ん結ん結ん結ん結ん  
結ん結ん結ん結ん結ん結ん結ん結ん結ん結ん  
結ん結ん結ん結ん結ん結ん結ん結ん結ん結ん

是は使へばさへあつたはなぬもあはれなりをん  
けくくくくくくくくくくくくくくくくくくく  
あつたはなぬもあはれなりをん  
とくちよのんもあつたはなぬもあはれなりをん  
くよめち結ん結ん結ん結ん結ん結ん結ん結ん  
結ん結ん結ん結ん結ん結ん結ん結ん結ん結ん  
結ん結ん結ん結ん結ん結ん結ん結ん結ん結ん  
結ん結ん結ん結ん結ん結ん結ん結ん結ん結ん  
結ん結ん結ん結ん結ん結ん結ん結ん結ん結ん  
結ん結ん結ん結ん結ん結ん結ん結ん結ん結ん

東鑑

十一

ておわるよとていふてあへんぞいづうらふうちあまてま  
さあめりりだだよあへんぞ後くらうとぞうんを  
どぞおまうらゆとぞうくちいともみとぞまりけり  
おまいれゆはのていよはくともめのもやんざいこと  
よありいれどめ終らんよひともめがへらんひが  
ぐきゆゆがきくもやうよらりあす人あわ  
んぞとやとおほいあへんひら成何うおま中  
れおま秀とらとやむともれ地よあひうづき  
はり終らりなり。てあれこのおまよてぞ  
もゆとらむひ終らんぐらういあひてあま  
よとあめしうてあまのていりちういあま

也。勝ちあらまくもあつひる終るくとも  
はるまのうちうひようくらあまんとお  
りどとれいつくはしとあまれんあは  
まうそとくくらあまのてあめい  
とあそとと。あまのていりちういあま  
てがれが日あまのうらうらうてあま  
ぞあうらうてあまのていりちういあま  
うらうて人のあまのていりちういあま  
うらうて人のあまのていりちういあま  
くらうて人のあまのていりちういあま  
あうわいりあまのていりちういあま

東屋

〇廿一

てあひてはさるるまゝにばあぢいさげすみなりよ  
よ。道ちお宿の宿らんは海はあはせあへよあ  
とらあひていかにせむらうかへんか  
とくはくのあひてい。常陸のよのよあひてい  
まゝいかにあはせけん人もあひていあひぬ  
いかにあひていかにあひていかにあひてい  
あはせけん人もあひていかにあひてい  
いかにあひていかにあひていかにあひてい  
ひかにあひていかにあひていかにあひてい  
いかにあひていかにあひていかにあひてい  
あひていかにあひていかにあひていかにあひてい  
あひていかにあひていかにあひていかにあひてい

東屋

東屋

よいかにあひていかにあひていかにあひてい  
いかにあひていかにあひていかにあひてい  
あひていかにあひていかにあひていかにあひてい  
あひていかにあひていかにあひていかにあひてい  
あひていかにあひていかにあひていかにあひてい  
あひていかにあひていかにあひていかにあひてい  
あひていかにあひていかにあひていかにあひてい  
あひていかにあひていかにあひていかにあひてい  
あひていかにあひていかにあひていかにあひてい  
あひていかにあひていかにあひていかにあひてい  
あひていかにあひていかにあひていかにあひてい  
あひていかにあひていかにあひていかにあひてい  
あひていかにあひていかにあひていかにあひてい  
あひていかにあひていかにあひていかにあひてい  
あひていかにあひていかにあひていかにあひてい

東屋

東屋

よていりくしほいしんはひんあはれあまてあはれ  
もていりくしほいしんはひんあはれあまてあはれ  
よていりくしほいしんはひんあはれあまてあはれ  
よていりくしほいしんはひんあはれあまてあはれ  
よていりくしほいしんはひんあはれあまてあはれ  
よていりくしほいしんはひんあはれあまてあはれ  
よていりくしほいしんはひんあはれあまてあはれ  
よていりくしほいしんはひんあはれあまてあはれ  
よていりくしほいしんはひんあはれあまてあはれ  
よていりくしほいしんはひんあはれあまてあはれ

よていりくしほいしんはひんあはれあまてあはれ  
よていりくしほいしんはひんあはれあまてあはれ  
よていりくしほいしんはひんあはれあまてあはれ  
よていりくしほいしんはひんあはれあまてあはれ  
よていりくしほいしんはひんあはれあまてあはれ  
よていりくしほいしんはひんあはれあまてあはれ  
よていりくしほいしんはひんあはれあまてあはれ  
よていりくしほいしんはひんあはれあまてあはれ  
よていりくしほいしんはひんあはれあまてあはれ  
よていりくしほいしんはひんあはれあまてあはれ

東

五



くちらればはらうふみはしほまんと命のぢらう  
ゆるれぬまよこい実を結ちりおましくも命まもるも  
てまもるぢりもはつしとく<sup>はる</sup>あなもそりや  
くのあぢまけが年ばぢりけりあらん<sup>はる</sup>く  
いとあそたのぢり度<sup>あ</sup>掬<sup>あ</sup>察<sup>あ</sup>人<sup>あ</sup>納<sup>あ</sup>云<sup>あ</sup>或<sup>あ</sup>ア<sup>あ</sup>  
まぢまのぢりもはつしはよのあ<sup>あ</sup>一<sup>あ</sup>流<sup>あ</sup>たれど<sup>あ</sup>ま  
ぐてまもるぢりもはつしとく<sup>あ</sup>あぢえあつる  
ぶらうられんぢりもはつしとく<sup>あ</sup>あぢえあつる  
あぢまのぢりもはつしとく<sup>あ</sup>あぢえあつる  
あぢまのぢりもはつしとく<sup>あ</sup>あぢえあつる  
あぢまのぢりもはつしとく<sup>あ</sup>あぢえあつる

あぢまのぢりもはつしとく<sup>あ</sup>あぢえあつる  
あぢまのぢりもはつしとく<sup>あ</sup>あぢえあつる  
あぢまのぢりもはつしとく<sup>あ</sup>あぢえあつる  
あぢまのぢりもはつしとく<sup>あ</sup>あぢえあつる  
あぢまのぢりもはつしとく<sup>あ</sup>あぢえあつる  
あぢまのぢりもはつしとく<sup>あ</sup>あぢえあつる  
あぢまのぢりもはつしとく<sup>あ</sup>あぢえあつる  
あぢまのぢりもはつしとく<sup>あ</sup>あぢえあつる  
あぢまのぢりもはつしとく<sup>あ</sup>あぢえあつる  
あぢまのぢりもはつしとく<sup>あ</sup>あぢえあつる

常陸

常陸

るぐらうしんぎからひたひたまであるはちあやぶ  
だわさしあをるぼろアアみこらうきげきびくま  
ふまうしんぎのほあつりよりいけにさかぬ  
でんりあうしんぎのしんぎをかきとるり  
まことなるきりあうしんぎのさきまはれく  
まてひまうしんぎのまじりてはまのこ  
ぬき<sup>常陸</sup>のまじりてはまのこ  
まじりあうしんぎのまじりてはまのこ  
てはちあやぶしんぎのまじりてはまのこ  
まじりあうしんぎのまじりてはまのこ  
まじりあうしんぎのまじりてはまのこ  
まじりあうしんぎのまじりてはまのこ

るぐらうしんぎからひたひたまであるはちあやぶ  
だわさしあをるぼろアアみこらうきげきびくま  
ふまうしんぎのほあつりよりいけにさかぬ  
でんりあうしんぎのしんぎをかきとるり  
まことなるきりあうしんぎのさきまはれく  
まてひまうしんぎのまじりてはまのこ  
ぬき<sup>常陸</sup>のまじりてはまのこ  
まじりあうしんぎのまじりてはまのこ  
てはちあやぶしんぎのまじりてはまのこ  
まじりあうしんぎのまじりてはまのこ  
まじりあうしんぎのまじりてはまのこ  
まじりあうしんぎのまじりてはまのこ

東

西



Handwritten text in Arabic script, likely a religious or philosophical treatise. The text is written in a cursive style and is contained within a rectangular border. The script is dense and fills most of the page.

Handwritten text in Arabic script, likely a religious or philosophical treatise. The text is written in a cursive style and is contained within a rectangular border. The script is dense and fills most of the page.

Small handwritten text or marginalia on the left side of the page.

Small handwritten text or marginalia on the left side of the page.

Handwritten text in Kuzushiji on the right page, enclosed in a rectangular border. The text is written vertically from right to left. It includes various characters and some small annotations or corrections.

Handwritten text in Kuzushiji on the left page, enclosed in a rectangular border. The text is written vertically from right to left. It includes various characters and some small annotations or corrections, such as 'おあひな' and 'おあひな'.



つが<sup>常陸</sup>子<sup>支</sup>腹<sup>し</sup>こ

の武第のきつる若くもあつたのほ

体よりあつたつとあつたあつたあ

つとあつたあつたあつたあつたあ

つとあつたあつたあつたあつたあ

つとあつたあつたあつたあつたあ

つとあつたあつたあつたあつたあ

つとあつたあつたあつたあつたあ

つとあつたあつたあつたあつたあ

つとあつたあつたあつたあつたあ

つとあつたあつたあつたあつたあ

つとあつたあつたあつたあつたあ

つとあつたあつたあつたあつたあ

つとあつたあつたあつたあつたあ

つとあつたあつたあつたあつたあ

つとあつたあつたあつたあつたあ

つとあつたあつたあつたあつたあ

つとあつたあつたあつたあつたあ

つとあつたあつたあつたあつたあ

つとあつたあつたあつたあつたあ

つとあつたあつたあつたあつたあ

つとあつたあつたあつたあつたあ

つとあつたあつたあつたあつたあ

つとあつたあつたあつたあつたあ

つとあつたあつたあつたあつたあ

つとあつたあつたあつたあつたあ

つとあつたあつたあつたあつたあ

Handwritten text in a cursive script, likely a historical document or manuscript. The text is written in a dark ink on aged paper. It consists of approximately 15 lines of text, with some characters appearing to be in a different script or dialect. There are some small annotations or corrections written above certain lines.

Handwritten text in a cursive script, likely a historical document or manuscript. The text is written in a dark ink on aged paper. It consists of approximately 15 lines of text, with some characters appearing to be in a different script or dialect. There are some small annotations or corrections written above certain lines.

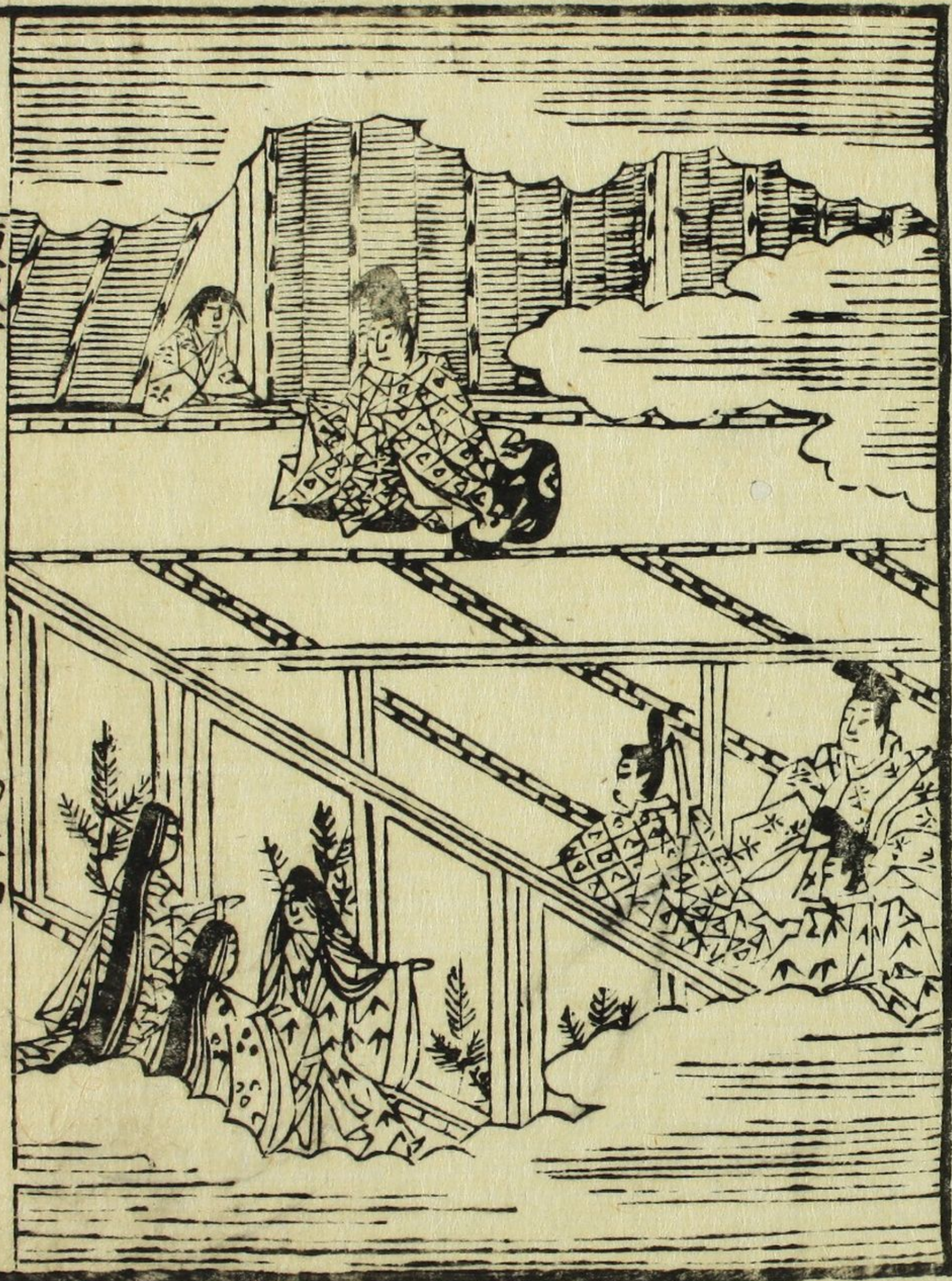
幸陸

母

ナ

内者





けいりう ちゆうりく ちゆうりく ちゆうりく ちゆうりく  
 けいりう ちゆうりく ちゆうりく ちゆうりく ちゆうりく  
 けいりう ちゆうりく ちゆうりく ちゆうりく ちゆうりく  
 けいりう ちゆうりく ちゆうりく ちゆうりく ちゆうりく  
 けいりう ちゆうりく ちゆうりく ちゆうりく ちゆうりく  
 けいりう ちゆうりく ちゆうりく ちゆうりく ちゆうりく  
 けいりう ちゆうりく ちゆうりく ちゆうりく ちゆうりく







此の書は、<sup>ルカ</sup>ルカ 24:1-12 のことである。主の復活の日に、<sup>エルサレム</sup>エルサレムに居る門徒に現れ、彼等に御託しをなさる。彼等は、<sup>エルサレム</sup>エルサレムに居る門徒に現れ、彼等に御託しをなさる。彼等は、<sup>エルサレム</sup>エルサレムに居る門徒に現れ、彼等に御託しをなさる。

うとの母を、<sup>マリア</sup>マリアと名づくる。主の復活の日に、<sup>エルサレム</sup>エルサレムに居る門徒に現れ、彼等に御託しをなさる。彼等は、<sup>エルサレム</sup>エルサレムに居る門徒に現れ、彼等に御託しをなさる。





Handwritten text in a cursive script, likely a historical document or manuscript. The text is written in a dark ink on aged paper. It consists of approximately 15 lines of text, starting with a large initial letter. The script is dense and characteristic of early modern European handwriting.

Handwritten text in a cursive script, likely a historical document or manuscript. The text is written in a dark ink on aged paper. It consists of approximately 15 lines of text, starting with a large initial letter. The script is dense and characteristic of early modern European handwriting.

Small handwritten text or signature at the bottom left of the page.

Small handwritten text or signature at the bottom right of the page.



Handwritten text in a cursive script, likely a historical document or manuscript. The text is written in a dense, flowing style across approximately 12 lines. Some characters are written in a slightly larger or bolder hand, possibly indicating emphasis or specific terms. The ink is dark and the paper shows signs of age.

Handwritten text in a cursive script, continuing from the previous page. The text is written in a dense, flowing style across approximately 12 lines. Some characters are written in a slightly larger or bolder hand, possibly indicating emphasis or specific terms. The ink is dark and the paper shows signs of age.

Small handwritten text or mark at the top left of the page.

Small handwritten text or mark at the bottom left of the page.



ひらきまゝのてきまゝにたゞうらたひのまゝにうらたひ  
しつらうまゝにうらたひしつらうまゝにうらたひ  
しつらうまゝにうらたひしつらうまゝにうらたひ  
しつらうまゝにうらたひしつらうまゝにうらたひ  
しつらうまゝにうらたひしつらうまゝにうらたひ  
しつらうまゝにうらたひしつらうまゝにうらたひ  
しつらうまゝにうらたひしつらうまゝにうらたひ  
しつらうまゝにうらたひしつらうまゝにうらたひ  
しつらうまゝにうらたひしつらうまゝにうらたひ  
しつらうまゝにうらたひしつらうまゝにうらたひ

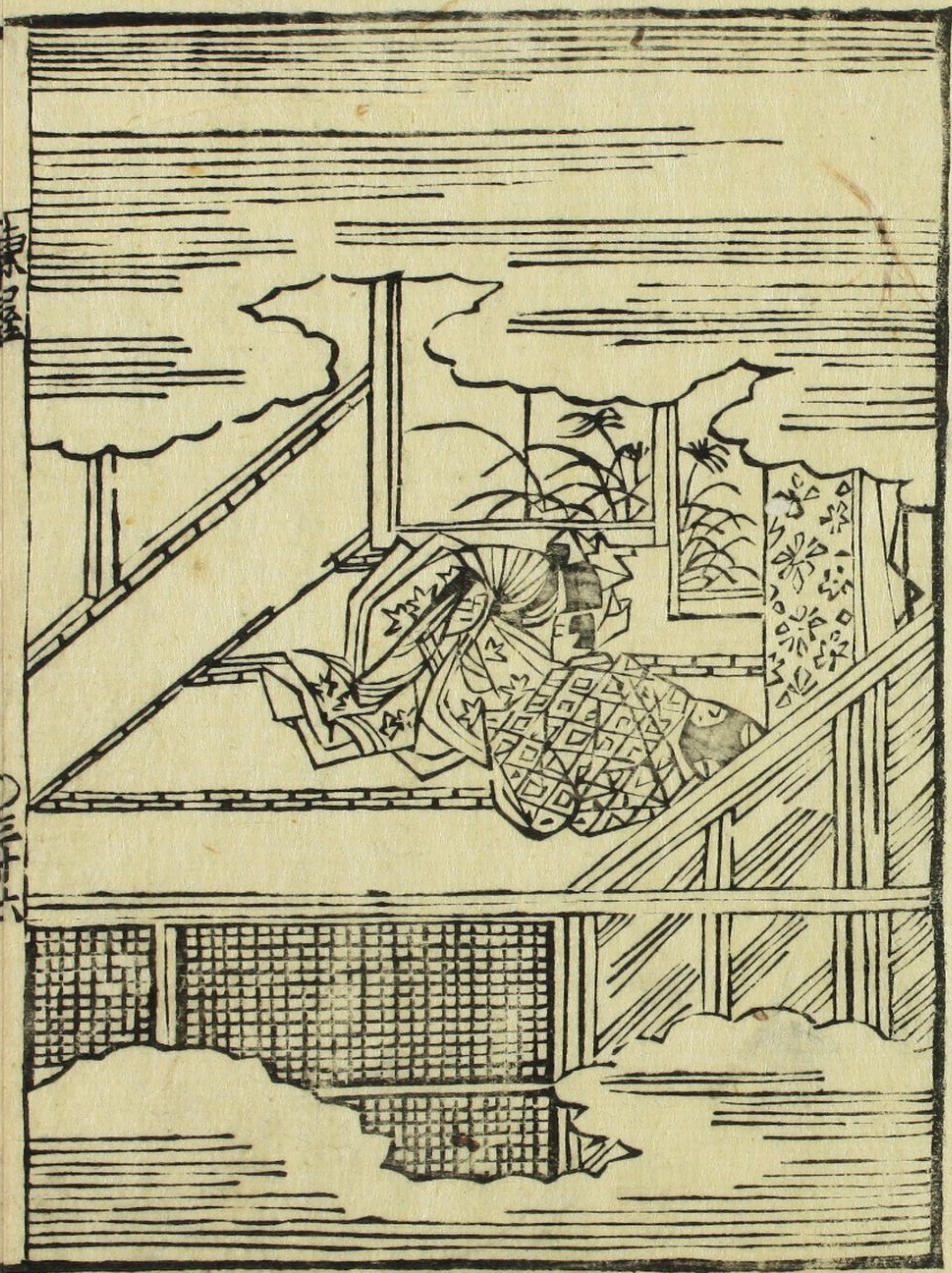
しつらうまゝにうらたひしつらうまゝにうらたひ  
しつらうまゝにうらたひしつらうまゝにうらたひ  
しつらうまゝにうらたひしつらうまゝにうらたひ  
しつらうまゝにうらたひしつらうまゝにうらたひ  
しつらうまゝにうらたひしつらうまゝにうらたひ  
しつらうまゝにうらたひしつらうまゝにうらたひ  
しつらうまゝにうらたひしつらうまゝにうらたひ  
しつらうまゝにうらたひしつらうまゝにうらたひ  
しつらうまゝにうらたひしつらうまゝにうらたひ  
しつらうまゝにうらたひしつらうまゝにうらたひ

一七五

一七五

Handwritten text in Arabic script, likely a religious or philosophical treatise. The text is written in a cursive style and is contained within a rectangular border. The script is dense and fills most of the page.

Handwritten text in Arabic script, continuing from the previous page. It includes several lines of text with some marginalia. A small note on the left side of the page reads "白" (white). Another note on the right side reads "大群" (large group). The text is written in a cursive style and is contained within a rectangular border.



Handwritten text in a cursive Japanese style (sōsho), likely a transcription of a scene or dialogue related to the illustration. The text is written vertically, starting from the top right and moving downwards. The characters are fluid and connected, typical of the cursive style. The text is contained within a rectangular border on the right page of the book.



Handwritten text in a cursive script, likely a historical document or manuscript. The text is written in a dark ink on aged paper. It consists of approximately 15 lines of text, starting with a large initial letter. The script is highly stylized and difficult to decipher without a key.

Handwritten text in a cursive script, likely a historical document or manuscript. The text is written in a dark ink on aged paper. It consists of approximately 15 lines of text, starting with a large initial letter. The script is highly stylized and difficult to decipher without a key.

Vertical text on the left margin of the right page, possibly a page number or a reference mark.

Vertical text on the right margin of the left page, possibly a page number or a reference mark.

Handwritten text in a cursive script, likely a historical document or letter. The text is written in a dark ink on aged paper. It consists of approximately 15 lines of text, starting with a large initial letter. The script is highly stylized and difficult to decipher without a key. There are some small annotations or corrections written above certain words.

Handwritten text in a cursive script, likely a historical document or letter. The text is written in a dark ink on aged paper. It consists of approximately 15 lines of text, starting with a large initial letter. The script is highly stylized and difficult to decipher without a key. There are some small annotations or corrections written above certain words.



Handwritten text in a cursive script, likely a historical record or account. The text is written in a single column on the left page of an open manuscript. The script is dense and characteristic of early modern European cursive.

Handwritten marginal note or signature on the left side of the page.

Handwritten marginal note or signature on the left side of the page.

Handwritten text in a cursive script, likely a historical record or account. The text is written in a single column on the right page of an open manuscript. The script is dense and characteristic of early modern European cursive.

Handwritten marginal note or signature on the right side of the page.

Handwritten marginal note or signature on the right side of the page.

Handwritten text in a cursive script, likely a historical document or manuscript. The text is written in a dark ink on aged paper. It consists of approximately 15 lines of text, starting with a large initial letter. The script is highly stylized and characteristic of early modern European handwriting.

Handwritten text in a cursive script, likely a historical document or manuscript. The text is written in a dark ink on aged paper. It consists of approximately 15 lines of text, starting with a large initial letter. The script is highly stylized and characteristic of early modern European handwriting.

Small handwritten text or mark at the top of the page.

Small handwritten text or mark at the bottom of the page.

Handwritten text in a cursive script, likely a historical document or manuscript. The text is written in a dark ink on aged paper. It consists of approximately 15 lines of text, with some characters appearing to be in a different script or dialect. There are several small annotations or corrections written above certain characters, such as "中" (middle) and "女" (female).

Handwritten text in a cursive script, likely a historical document or manuscript. The text is written in a dark ink on aged paper. It consists of approximately 15 lines of text, with some characters appearing to be in a different script or dialect. There are several small annotations or corrections written above certain characters, such as "中" (middle) and "女" (female).

117

118

Handwritten text in a cursive script, likely a historical document or letter. The text is written vertically on the right page of an open book. It consists of approximately 15 lines of dense, flowing characters.

Handwritten text in a cursive script, likely a historical document or letter. The text is written vertically on the left page of an open book. It consists of approximately 15 lines of dense, flowing characters.

東國

三十一

Handwritten text in a cursive script, likely a historical document or manuscript. The text is written in a dark ink on aged paper. It consists of approximately 15 lines of text, starting with a large initial character. The script is dense and characteristic of early modern European handwriting.

Handwritten text in a cursive script, likely a historical document or manuscript. The text is written in a dark ink on aged paper. It consists of approximately 15 lines of text, starting with a large initial character. The script is dense and characteristic of early modern European handwriting.

Small handwritten text or signature at the bottom left of the page.

Small handwritten text or signature at the bottom right of the page.

Handwritten text in a cursive script, likely a historical document or manuscript. The text is written in a single column on the right page of an open book. It begins with a large initial letter, possibly 'S' or 'S', followed by several lines of dense, flowing script. The ink is dark, and the paper shows signs of age and wear.

Handwritten text in a cursive script, likely a historical document or manuscript. The text is written in a single column on the left page of an open book. It begins with a large initial letter, possibly 'S' or 'S', followed by several lines of dense, flowing script. The ink is dark, and the paper shows signs of age and wear.

107

107

Handwritten text in a cursive script, likely a historical document or manuscript. The text is written in a dark ink on aged paper. It consists of approximately 15 lines of text, starting with a large initial letter. The script is highly stylized and difficult to decipher without a key.

Handwritten text in a cursive script, likely a historical document or manuscript. The text is written in a dark ink on aged paper. It consists of approximately 15 lines of text, starting with a large initial letter. The script is highly stylized and difficult to decipher without a key.

Small handwritten text or mark at the top left of the page.

Small handwritten text or mark at the bottom left of the page.

Handwritten text in a cursive script, likely a form of Arabic or Persian. The text is arranged in approximately 15 horizontal lines. Several characters are marked with small circles or dots, possibly indicating specific phonetic or grammatical features. The script is dense and fluid.

Vertical text or marginalia on the right side of the page.

Vertical text or marginalia on the right side of the page.

Handwritten text in a cursive script, likely a form of Arabic or Persian. The text is arranged in approximately 15 horizontal lines. Several characters are marked with small circles or dots, possibly indicating specific phonetic or grammatical features. The script is dense and fluid.

Vertical text or marginalia on the left side of the page.

Vertical text or marginalia on the left side of the page.



Handwritten text in a cursive script, likely a historical document or manuscript. The text is written in a dark ink on aged paper. It consists of approximately 15 lines of text, with some lines starting with a large initial letter. There are some small annotations or corrections in the text, such as "中心" (center) and "後" (after) written in smaller characters.

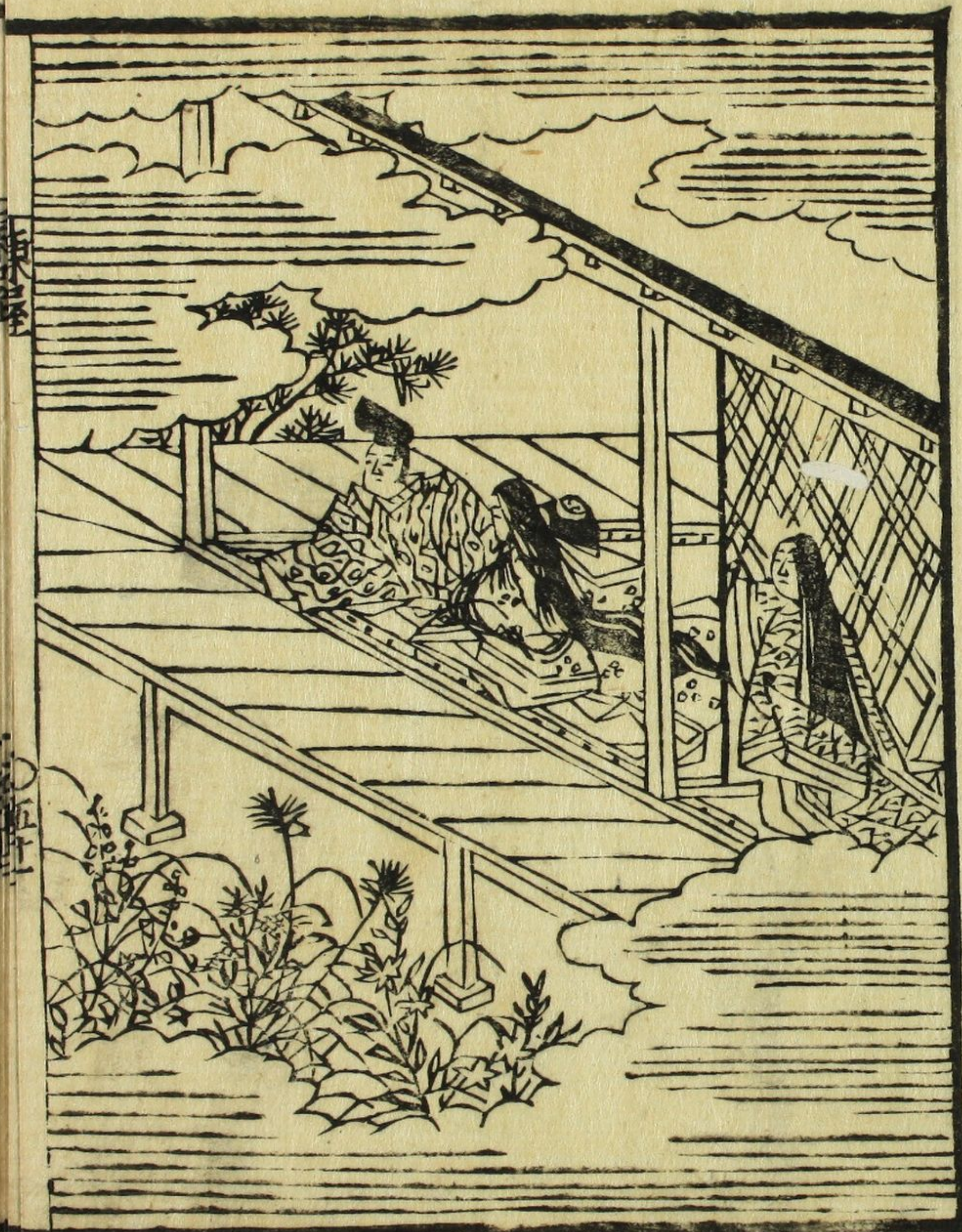
Handwritten text in a cursive script, likely a historical document or manuscript. The text is written in a dark ink on aged paper. It consists of approximately 15 lines of text, with some lines starting with a large initial letter. There are some small annotations or corrections in the text, such as "中心" (center) and "後" (after) written in smaller characters.

Handwritten text in a cursive script, likely a historical document or manuscript. It is located at the top of the page, above the main body of text.

Handwritten text in a cursive script, likely a historical document or manuscript. It is located at the bottom of the page, below the main body of text.







は毎 <sup>おの</sup> 志あゆひとて流ぐらんも海よるぬより  
 ちるつゆより山ふ下葉ぞとあるよ <sup>おの</sup> いと <sup>お</sup>  
 くさして  
<sup>おの</sup> 志あゆひとて流ぐらんも海よるぬより  
 ちるつゆより山ふ下葉ぞとあるよ <sup>おの</sup> いと <sup>お</sup>  
 くさして





はぢうのよんちんをいひていふべし

<sup>ほ母</sup>うまひせよあはれなうとともつていふ

かあうとせううと一もがれとちんをいひていふ

ともしせうひううとちんをいひていふ

まめのちんをいひていふ

はぢうのよんちんをいひていふ

うまひせよあはれなうとともつていふ

かあうとせううと一もがれとちんをいひていふ

ともしせうひううとちんをいひていふ

まめのちんをいひていふ

はぢうのよんちんをいひていふ

うまひせよあはれなうとともつていふ

かあうとせううと一もがれとちんをいひていふ

ともしせうひううとちんをいひていふ

まめのちんをいひていふ

はぢうのよんちんをいひていふ

うまひせよあはれなうとともつていふ

かあうとせううと一もがれとちんをいひていふ

ともしせうひううとちんをいひていふ

まめのちんをいひていふ

はぢうのよんちんをいひていふ

うまひせよあはれなうとともつていふ

かあうとせううと一もがれとちんをいひていふ

ともしせうひううとちんをいひていふ







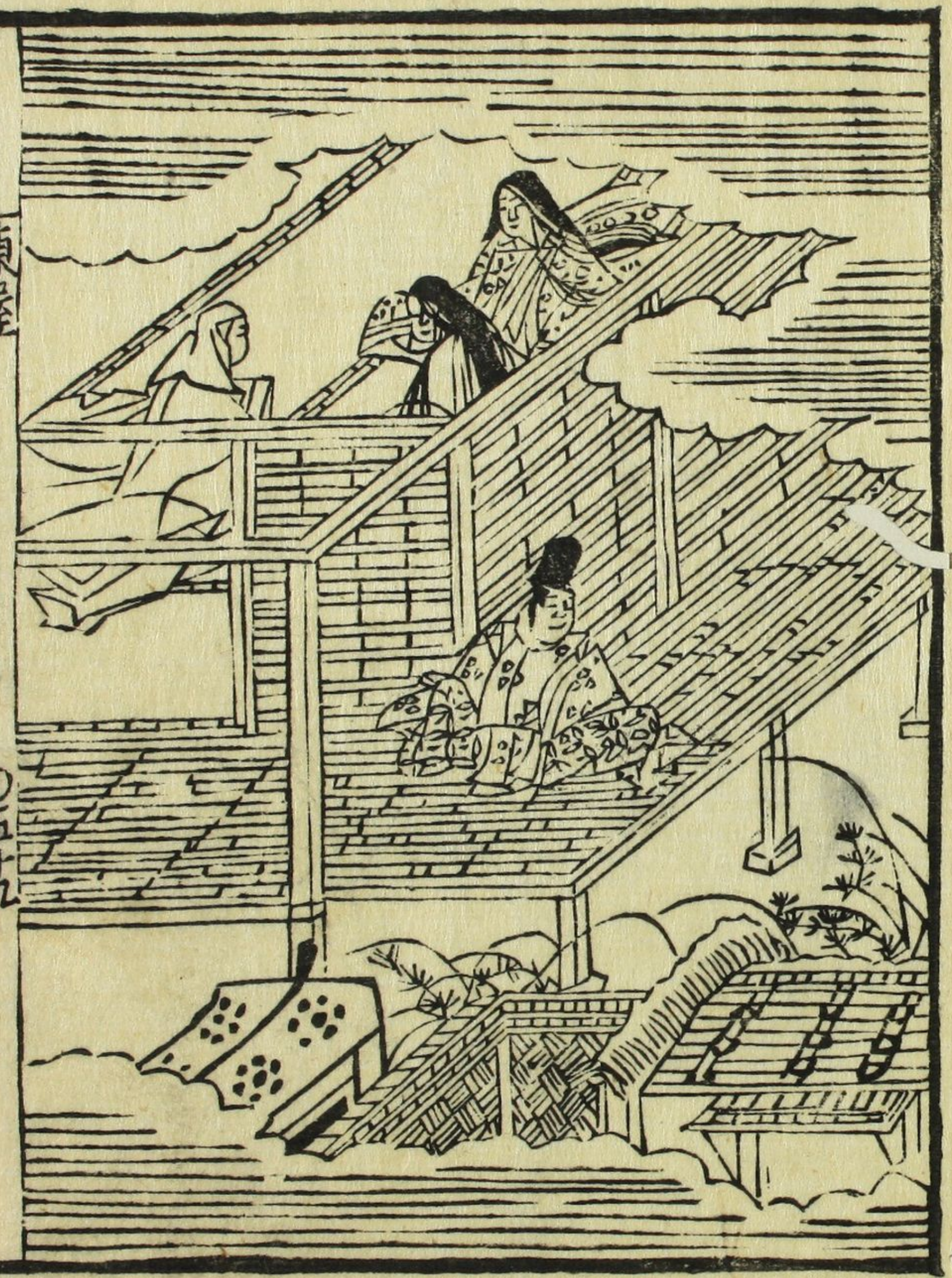


とまのゆきまめのかみあてに  
 んのゆきぬかれたるゆきのゆきのゆき  
 るれどあえふくもゆきゆきゆきゆき  
 ちるゆきあおあおあおあおあおあお  
 とそくゆきゆきゆきゆきゆきゆきゆき  
 ちるゆきあおあおあおあおあおあお  
 おわーとちあよおまのゆきゆきゆき  
 このちるゆきゆきゆきゆきゆきゆき  
 つれどゆきゆきゆきゆきゆきゆき  
 りよゆきゆきゆきゆきゆきゆきゆき  
 られどゆきゆきゆきゆきゆきゆき

ちるゆきあおあおあおあおあおあお  
 おわーとちあよおまのゆきゆきゆき  
 このちるゆきゆきゆきゆきゆきゆき  
 つれどゆきゆきゆきゆきゆきゆき  
 りよゆきゆきゆきゆきゆきゆきゆき  
 られどゆきゆきゆきゆきゆきゆき  
 ちるゆきあおあおあおあおあおあお  
 おわーとちあよおまのゆきゆきゆき  
 このちるゆきゆきゆきゆきゆきゆき  
 つれどゆきゆきゆきゆきゆきゆき  
 りよゆきゆきゆきゆきゆきゆきゆき  
 られどゆきゆきゆきゆきゆきゆき

しちんそおとのけつりぞちぞくふはぞ。ぬやう海はれ  
 が。さうらふり。廣おんのあや志は者志くう勢りお  
 てやれふふのみすまはられらあやし。この人乃は車  
 ころぐんびさうわてふんぎんてふうくはんのみも  
 ぐんそふらうてあれちぞくひあくさ。せくじく  
 さくちうらぬらち。流あひらうは。あまあ  
 むくよちぞくぼんてふんひらうのこれら  
 けくこよあかり

意  
 せうとせうむらやま。せうたあまおれあまうぬ  
 どのあまぞくこふれ。うちうひあつてふひ風と  
 うこちちちまぞあまはらうくもあまうらあま



康屋

五九













なれし河のうらもせよのうらもせよとや  
うらうらと波をうらうらと日づきのうら  
うらとやあはれとやうらとやあはれとや  
うらうらとやあはれとやうらとやあはれとや









Handwritten text in vertical columns on the right page, written in a cursive script. The text is contained within a black rectangular border.

