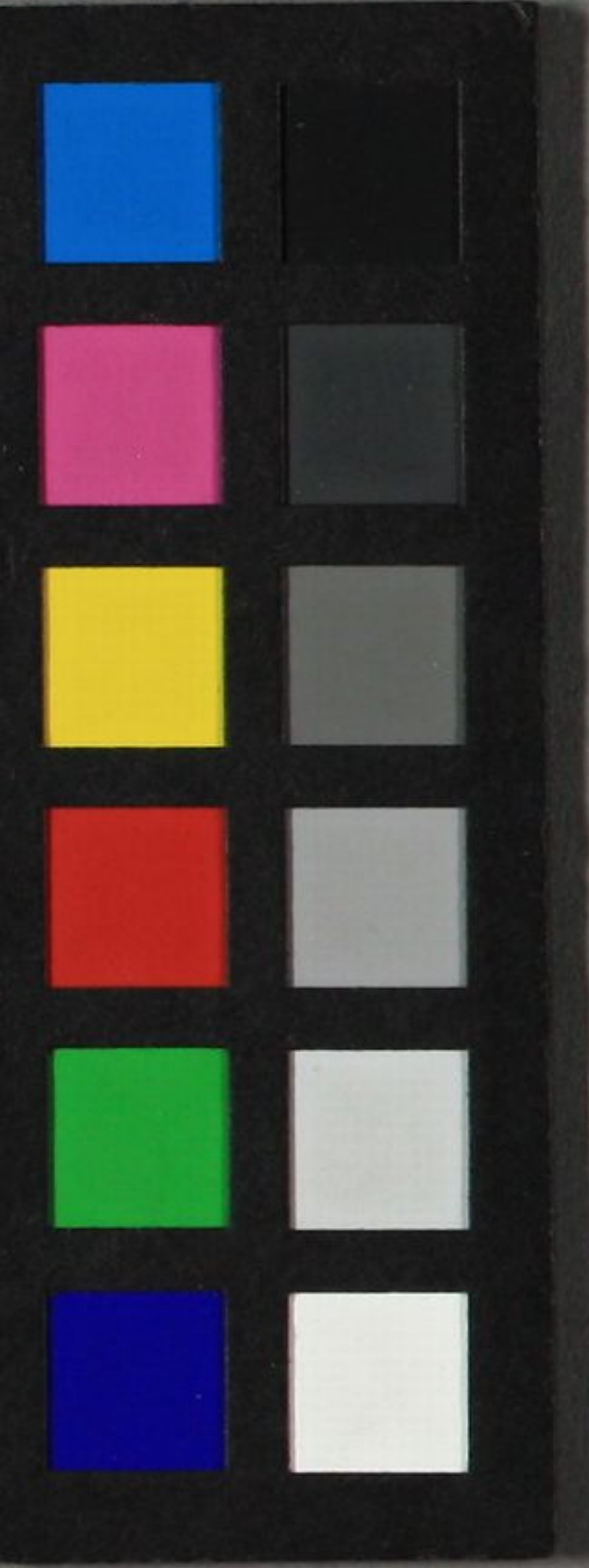


源氏

玉鬘
初音
胡蝶

三十一
三十一
三十二



Handwritten text on a piece of aged paper, oriented vertically. The text is written in a cursive style, likely a form of Arabic or Persian script. The characters are arranged in three columns, reading from right to left. The rightmost column contains the characters 'ع', 'ن', 'ا', 'ل', 'م'. The middle column contains 'ل', 'م', 'ن', 'ع'. The leftmost column contains 'م', 'ن', 'ع'. The paper is yellowed and has irregular, torn edges.



縁縁打打つつつつととぬぬれれととああららりりししタタククハハととああけ
 されされぬぬすすうう海海づづちちりりののまま様様ががままととうう様
 ひひららささぬぬららよよつつけけててももああららりりししタタククハハととああけ
 りりああららりりののまま様様ががままととうう様様ののまま様様ががままととうう様
 ぬぬららりりししタタククハハととああけけぬぬららりりししタタククハハととああけ
 ぬぬららりりししタタククハハととああけけぬぬららりりししタタククハハととああけ
 すすままののまま様様ががままととうう様様ののまま様様ががままととうう様
 みみかかんんででああららりりししタタククハハととああけけぬぬららりりししタタククハハととああけ
 ららああららりりししタタククハハととああけけぬぬららりりししタタククハハととああけ
 されされぬぬららりりししタタククハハととああけけぬぬららりりししタタククハハととああけ
 ああららりりししタタククハハととああけけぬぬららりりししタタククハハととああけ





Handwritten text in a cursive script, likely a historical document or manuscript. The text is written in a dark ink on aged paper. It consists of approximately 12 lines of text, with some characters appearing to be in a different script or dialect. The text is enclosed in a simple rectangular border.

Handwritten text in a cursive script, likely a historical document or manuscript. The text is written in a dark ink on aged paper. It consists of approximately 12 lines of text, with some characters appearing to be in a different script or dialect. The text is enclosed in a simple rectangular border.

Handwritten text in a cursive script, likely a historical document or manuscript. The text is written vertically on the right page of an open book. It appears to be a list or a series of entries, possibly related to a collection or inventory. The characters are dense and difficult to decipher without specialized knowledge of the script.

Handwritten text in a cursive script, likely a historical document or manuscript. The text is written vertically on the left page of an open book. It appears to be a list or a series of entries, possibly related to a collection or inventory. The characters are dense and difficult to decipher without specialized knowledge of the script.

Handwritten text in a cursive script, likely a historical document or letter. The text is written in a dark ink on aged paper. It begins with a large initial letter, possibly 'D' or 'D'. The script is dense and fills most of the page. There are some faint markings or bleed-through from the reverse side of the page.

Handwritten text in a cursive script, likely a historical document or letter. The text is written in a dark ink on aged paper. It begins with a large initial letter, possibly 'D' or 'D'. The script is dense and fills most of the page. There are some faint markings or bleed-through from the reverse side of the page.

Handwritten text in a cursive script, likely a historical document or manuscript. The text is written in a dark ink on aged paper. It consists of approximately 12 lines of text, with some characters appearing to be in a different script or dialect. There are several small annotations or corrections written above certain characters, such as "未記" (unrecorded) and "未定" (undecided). The text is enclosed in a simple rectangular border.

Handwritten text in a cursive script, likely a historical document or manuscript. The text is written in a dark ink on aged paper. It consists of approximately 12 lines of text, with some characters appearing to be in a different script or dialect. There are several small annotations or corrections written above certain characters, such as "未記" (unrecorded) and "未定" (undecided). The text is enclosed in a simple rectangular border.

Handwritten text, possibly a page number or a small note, located at the top left of the page.

Handwritten text, possibly a page number or a small note, located at the bottom left of the page.

Handwritten text in a cursive script, likely a historical document or manuscript. The text is written in a dark ink on aged paper. It consists of approximately 15 lines of text, starting with a large initial letter. The script is highly stylized and difficult to decipher without a key.

Handwritten text in a cursive script, likely a historical document or manuscript. The text is written in a dark ink on aged paper. It consists of approximately 15 lines of text, starting with a large initial letter. The script is highly stylized and difficult to decipher without a key.

王様
御
のまよひをうけつゝおぼえさする
けすくせはらふまじき御心遣ひ
のまよひをうけつゝおぼえさする

保氏保氏の正月のゆめ
年年くらくふあひのそられく
らりわらうらうらうらうら
ちんちんちんちんちんちんちん
うやうやうやうやうやうや
らりのものびらうあざうら
あまやうのあまやうのあま
くかんがうのあまやうのあま
そんまのあまやうのあま
あまやうのあまやうのあま
まがひてのあまやうのあま
まがひてのあまやうのあま

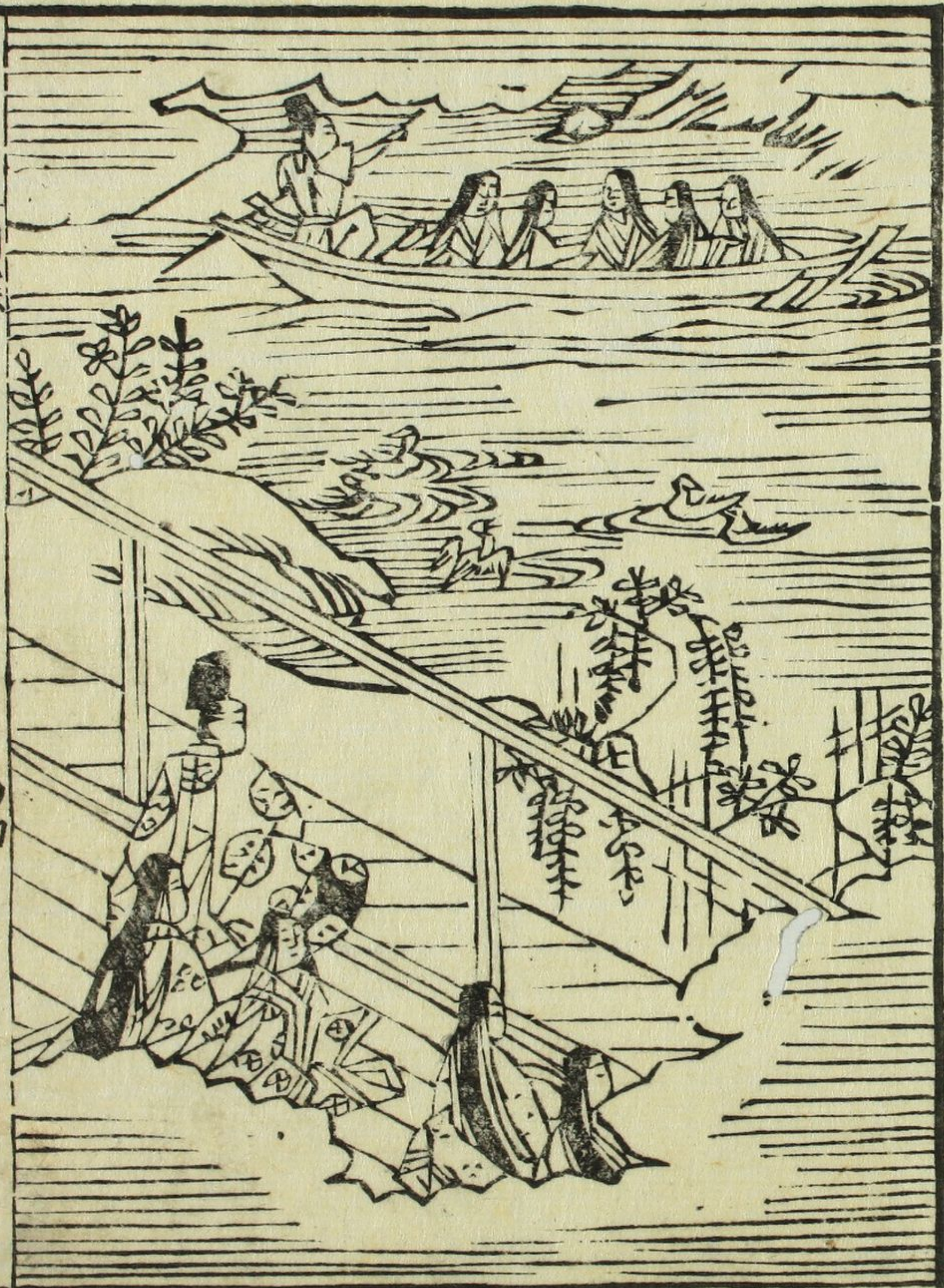
あま

あま

Handwritten text in a cursive script, likely a historical document or manuscript. The text is written in a dark ink on aged paper. The script is dense and fills most of the page area.

Handwritten text in a cursive script, likely a historical document or manuscript. The text is written in a dark ink on aged paper. The script is dense and fills most of the page area. There are some small annotations or corrections visible in the text.

月葉



四



Handwritten text in Arabic script, likely a religious or philosophical treatise. The text is written in a cursive style and is contained within a rectangular border. The script is dense and fills most of the page.

Handwritten text in Arabic script, likely a religious or philosophical treatise. The text is written in a cursive style and is contained within a rectangular border. The script is dense and fills most of the page.

Handwritten marginal note or page number on the left side of the page.

Handwritten marginal note or page number on the left side of the page.

Handwritten text in a cursive script, likely a historical document or manuscript. The text is written in a dense, flowing style with many small characters and some larger characters interspersed. There are some small annotations or corrections written above certain lines of text.

Handwritten text in a cursive script, similar to the right page. The text is written in a dense, flowing style with many small characters and some larger characters interspersed. There are some small annotations or corrections written above certain lines of text.

Handwritten text in a cursive script, likely a form of Arabic or Persian. The text is arranged in approximately 12 horizontal lines. There are several small annotations or characters interspersed within the main text, such as a small '5' above a line and a '10' above another. The script is dense and fluid.

Handwritten text in a cursive script, likely a form of Arabic or Persian. The text is arranged in approximately 12 horizontal lines. There are several small annotations or characters interspersed within the main text, such as a '10' above a line and a '10' above another. The script is dense and fluid.

Handwritten text in Arabic script, likely a religious or philosophical treatise. The text is written in a cursive style and is contained within a rectangular border. The script is dense and fills most of the page.

Handwritten text in Arabic script, likely a religious or philosophical treatise. The text is written in a cursive style and is contained within a rectangular border. The script is dense and fills most of the page.

Handwritten text in a cursive script, likely a form of Japanese calligraphy. The text is arranged in approximately 15 horizontal lines. Several characters are written in a larger, bolder style, possibly indicating emphasis or specific terms. The paper shows signs of age and wear, with some staining and a small tear near the center fold.

Handwritten text in a cursive script, likely a form of Japanese calligraphy. The text is arranged in approximately 15 horizontal lines. Several characters are written in a larger, bolder style, possibly indicating emphasis or specific terms. The paper shows signs of age and wear, with some staining and a small tear near the center fold.

