



長崎一山集  
大田一山

千七百七十

長崎一山集





足利義澄公長男  
征夷大将軍義晴公古子

明石 藤子産  
小娘

二卷十一編

重刊



其由縁  
部  
二編  
八景  
陽齋  
豊田  
西  
鶴屋  
喜  
右  
作  
大  
行  
了  
可  
也  
市  
拜





皇町十代將軍  
 足利義澄公  
 御手會の  
 四



龍  
 力  
 太



十編 一編 名宗入年來の才成談 若 督 懐 奥の郡  
 山小世を... 條あり丁度其時... 當り事異あれど万年も體...  
 龜戸の親王六七十の若盛を人... 花... 繪草紙の大義...  
 ... 誰も顔色青... 藍... 出て藍...  
 ... 濃る國貞兄熟く受る家傳の愛形況親御が外題と口画を...  
 ... 鬼小鉄棒錫杖振上浦舟と追ふ様... 料簡... ね... 頼む師... 早く...  
 ... 離る吾等のうら山... 盲... 前後... 作度耻... 覗...  
 ... 癖小耳遠き雅言の好と叱られ... 紙屋治兵衛の脱笠雨も袂... 昔...  
 ... ろう思... 作者... 老の數... 恥... 師匠の... の續知...  
 ... けふ上下で長いと若菜く... の... せ... け... け... け...  
 ... 和葉どか... 笑...

十編 一編 名宗入年來の才成談 若 督 懐 奥の郡  
 山小世を... 條あり丁度其時... 當り事異あれど万年も體...  
 龜戸の親王六七十の若盛を人... 花... 繪草紙の大義...  
 ... 誰も顔色青... 藍... 出て藍...  
 ... 濃る國貞兄熟く受る家傳の愛形況親御が外題と口画を...  
 ... 鬼小鉄棒錫杖振上浦舟と追ふ様... 料簡... ね... 頼む師... 早く...  
 ... 離る吾等のうら山... 盲... 前後... 作度耻... 覗...  
 ... 癖小耳遠き雅言の好と叱られ... 紙屋治兵衛の脱笠雨も袂... 昔...  
 ... ろう思... 作者... 老の數... 恥... 師匠の... の續知...  
 ... けふ上下で長いと若菜く... の... せ... け... け... け...  
 ... 和葉どか... 笑...

笠亭仙果



壬子新刊









Vertical text on the left margin of the illustration.

Vertical text block on the upper right side of the illustration.

Vertical text block at the bottom of the illustration.

Handwritten text at the top right of the page.



Vertical text block on the upper left side of the illustration.

Vertical text block at the bottom of the illustration.

Handwritten text at the bottom right of the page.







あつたの宗入のよりや  
こゝろおぼくもいそ  
かぢふとあつた  
あつたの宗入のよりや  
こゝろおぼくもいそ  
かぢふとあつた  
あつたの宗入のよりや  
こゝろおぼくもいそ  
かぢふとあつた

あつたの宗入のよりや  
こゝろおぼくもいそ  
かぢふとあつた  
あつたの宗入のよりや  
こゝろおぼくもいそ  
かぢふとあつた  
あつたの宗入のよりや  
こゝろおぼくもいそ  
かぢふとあつた



あつたの宗入のよりや  
こゝろおぼくもいそ  
かぢふとあつた  
あつたの宗入のよりや  
こゝろおぼくもいそ  
かぢふとあつた  
あつたの宗入のよりや  
こゝろおぼくもいそ  
かぢふとあつた

あつたの宗入のよりや  
こゝろおぼくもいそ  
かぢふとあつた  
あつたの宗入のよりや  
こゝろおぼくもいそ  
かぢふとあつた  
あつたの宗入のよりや  
こゝろおぼくもいそ  
かぢふとあつた

Handwritten text in vertical columns, likely a narrative or dialogue. The text is densely packed and occupies the upper and middle portions of the page. A decorative border separates the text from the illustration below.



The illustration at the bottom of the page depicts a landscape scene. In the foreground, there is a wooden fence or railing. To the left, a large, detailed pine tree with many needles is shown. The background features rolling hills or mountains under a clear sky. The style is characteristic of traditional Japanese woodblock printing.

Handwritten text in vertical columns, likely a narrative or dialogue. The text is densely packed and occupies the upper and middle portions of the page. A decorative border separates the text from the illustration below.



The illustration at the bottom of the page depicts a group of women in traditional Japanese attire. They are shown in various poses, some standing and some sitting. The women are wearing elaborate kimonos with various patterns and designs. The scene appears to be an indoor setting, possibly a room or a courtyard. The style is characteristic of traditional Japanese woodblock printing.

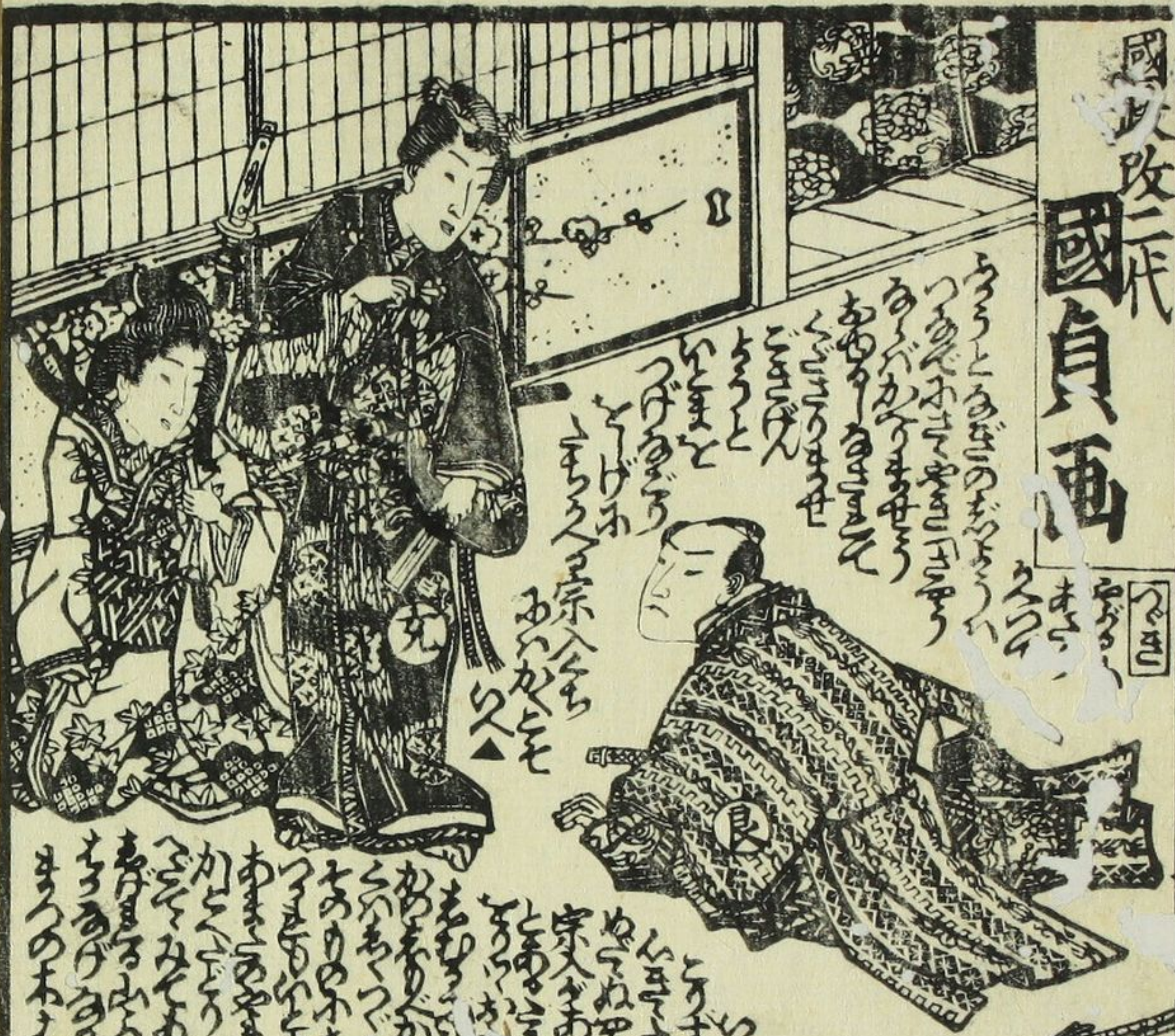
十一日 下舟



あ (た) ね

### 國政改二代 國貞画

手法十二編



## 仙果作

あなごしあ  
あなごしあ  
あなごしあ  
あなごしあ  
あなごしあ  
あなごしあ  
あなごしあ  
あなごしあ  
あなごしあ  
あなごしあ

あなごしあ  
あなごしあ  
あなごしあ  
あなごしあ  
あなごしあ  
あなごしあ  
あなごしあ  
あなごしあ  
あなごしあ  
あなごしあ



其業部の巻之編

一筆琴主人作  
 一陽高豊田  
 大谷  
 山屋金太郎

一筆琴の主人作  
 一陽高豊田  
 大谷  
 山屋金太郎

一筆琴の主人作  
 一陽高豊田  
 大谷  
 山屋金太郎



Handwritten Japanese text in the upper left corner, including the characters "十六" (16) and "七年" (7th year).

Extensive handwritten Japanese text surrounding the illustration, arranged in vertical columns. The text includes various characters and phrases, some of which are partially obscured by the drawing's lines.



Handwritten Japanese text in the upper right corner, including the characters "十六" (16) and "七年" (7th year), and a signature "茶の" (Cha no).

Extensive handwritten Japanese text surrounding the illustration, arranged in vertical columns. The text includes various characters and phrases, some of which are partially obscured by the drawing's lines.

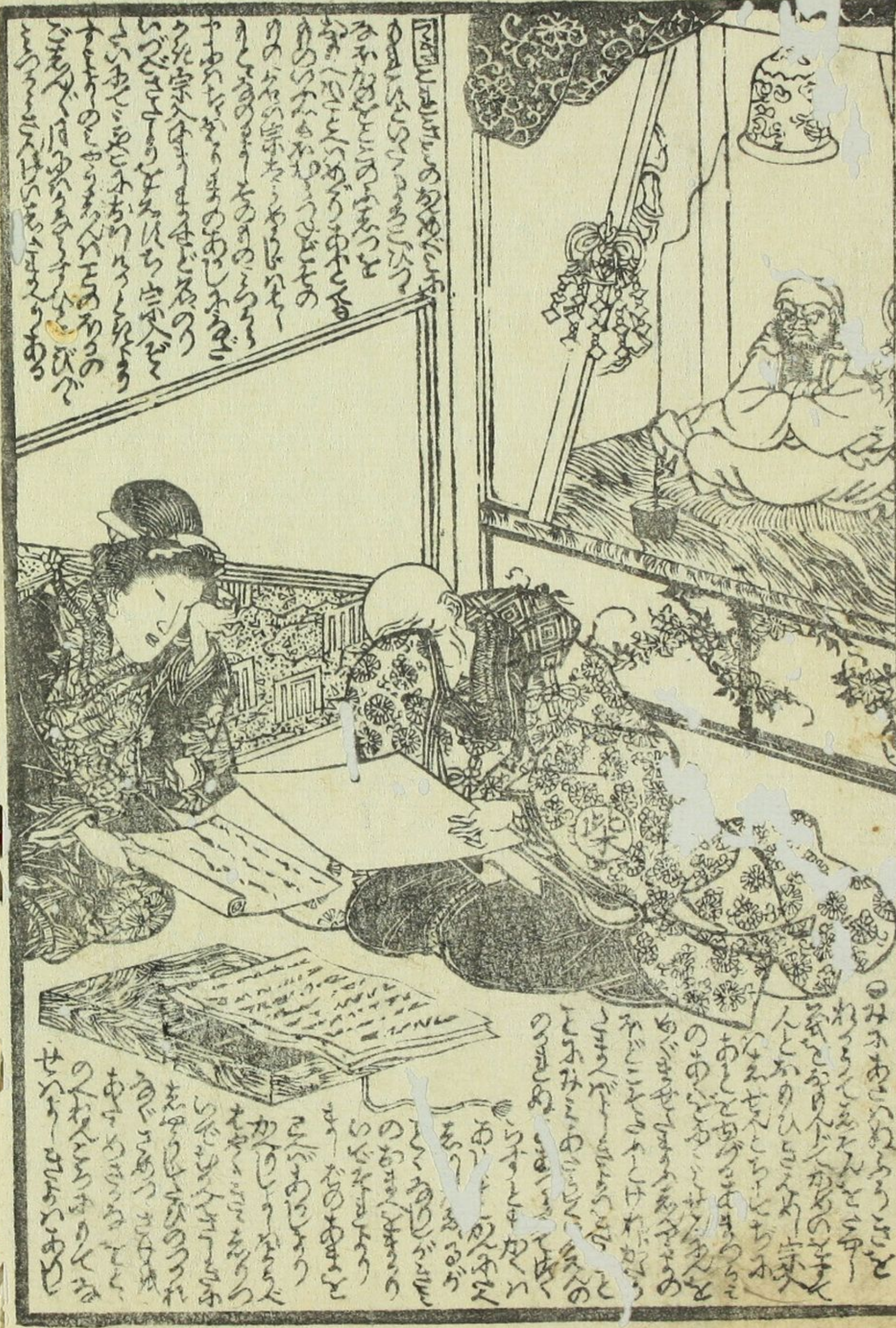
Handwritten text in vertical columns, likely a narrative or commentary related to the illustration below.



Handwritten text in vertical columns, continuing the narrative or commentary from the top of the page.



Handwritten text in vertical columns, continuing the narrative or commentary from the top of the page.



此の巻は、  
 井筒汁の  
 物語の  
 序の巻に  
 當る。

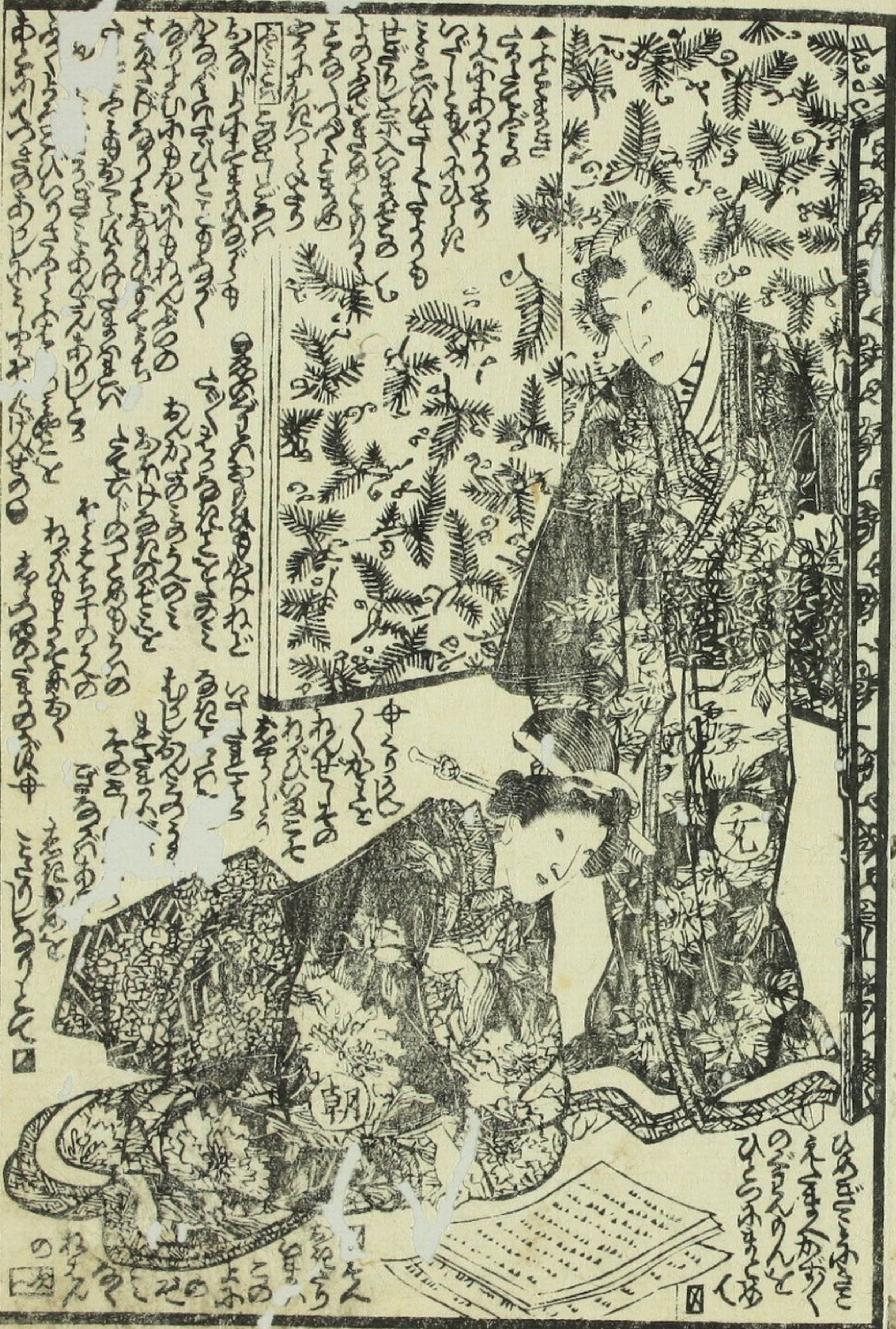
此の巻は、  
 井筒汁の  
 物語の  
 序の巻に  
 當る。



此の巻は、  
 井筒汁の  
 物語の  
 序の巻に  
 當る。

此の巻は、  
 井筒汁の  
 物語の  
 序の巻に  
 當る。





Handwritten text in a cursive script, likely a Japanese dialect or a specific form of calligraphy, surrounding the illustration. The text is arranged in vertical columns, with some characters appearing to be in a different script or dialect.



Handwritten text in a cursive script, likely a Japanese dialect or a specific form of calligraphy, surrounding the illustration. The text is arranged in vertical columns, with some characters appearing to be in a different script or dialect.

Handwritten text at the top right of the page, possibly a page number or a title.

Handwritten text at the bottom right of the page, possibly a page number or a title.



Handwritten text in a cursive style, likely a preface or introductory text, located at the top of the right page.



Handwritten text in a cursive style, likely a postscript or concluding text, located at the bottom of the right page.

Handwritten text in a cursive style, likely a preface or introductory text, located at the top of the left page.

Handwritten text in a cursive style, continuing the text from the top of the left page.

Handwritten text in a cursive style, likely a postscript or concluding text, located at the bottom of the left page.





時  
手海十一

十一



Handwritten text in a vertical column on the left side of the illustration, including the characters '手海' and '十一'.

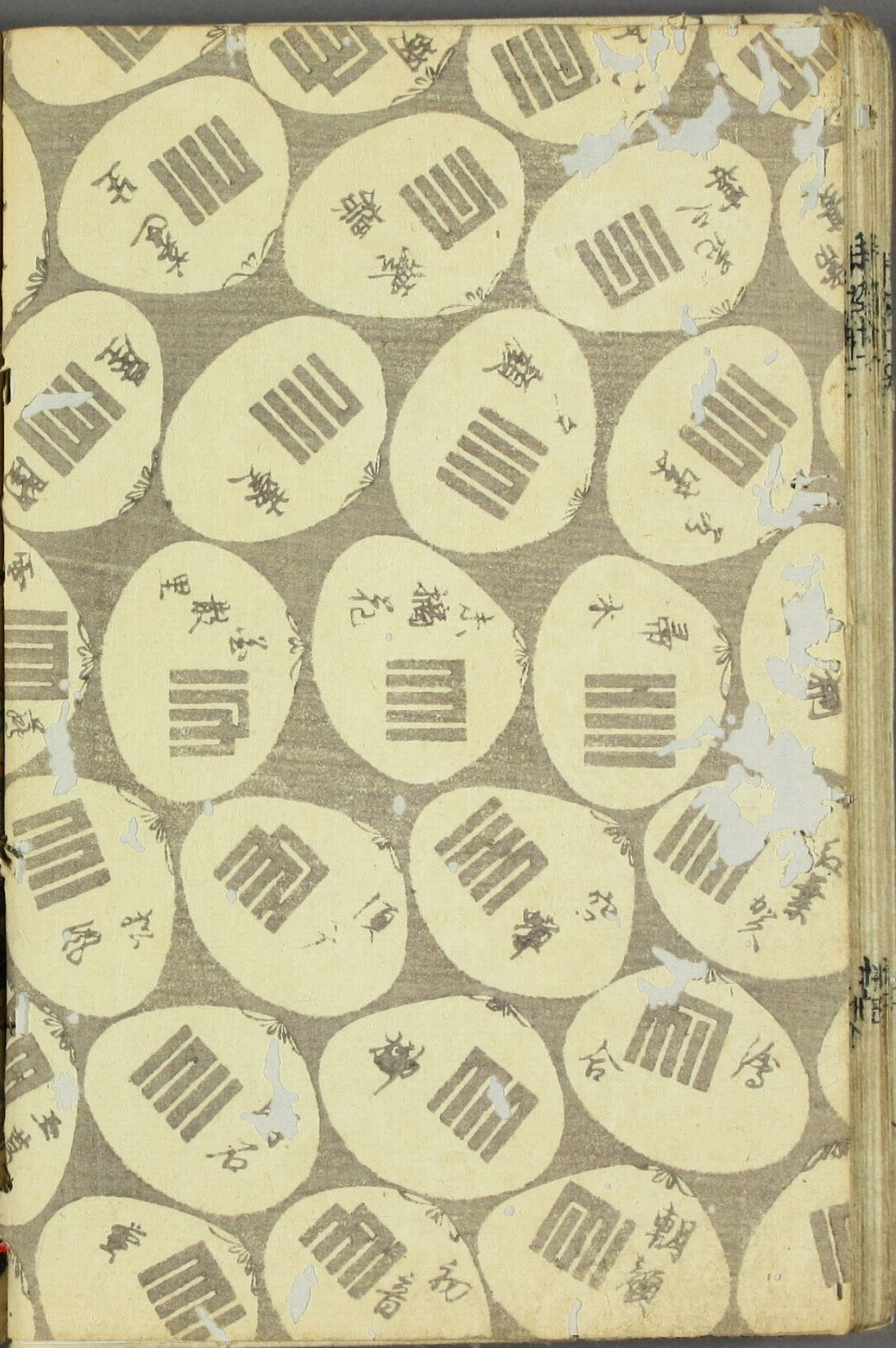
Multiple columns of handwritten text in a vertical column on the right side of the illustration, including the characters '手海' and '十一'.



Handwritten text in a vertical column on the left side of the illustration, including the characters '手海' and '十一'.

Multiple columns of handwritten text in a vertical column on the right side of the illustration, including the characters '手海' and '十一'.





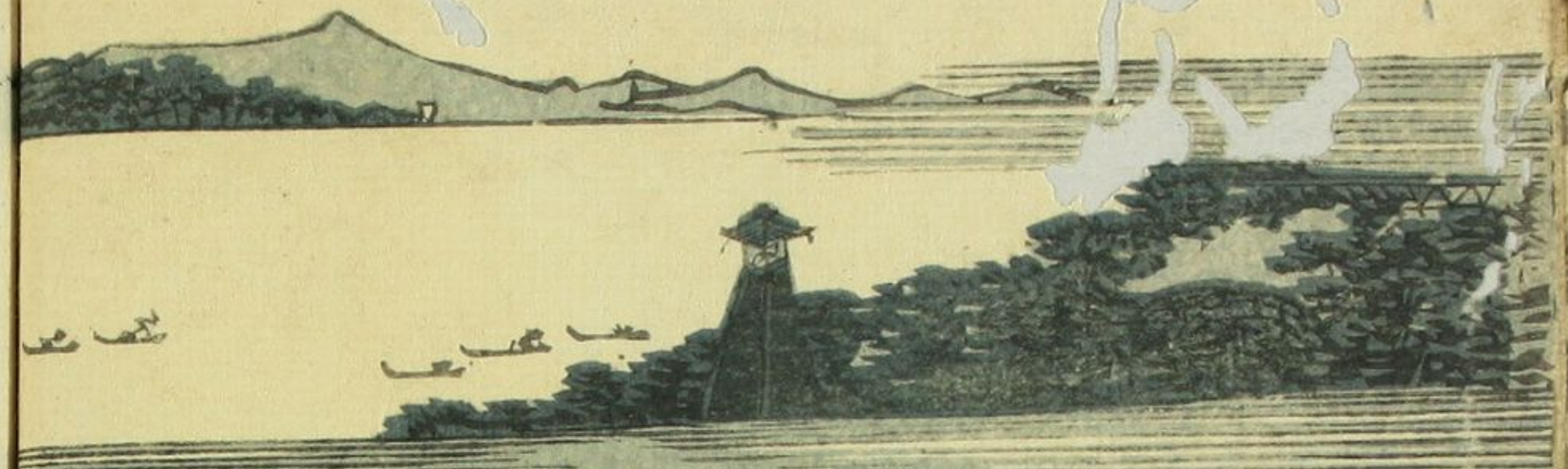




幾度もの夏あはれど無事を程面白くぬかければ舊めのうらとあるも山名の  
 餘黨の洗濯話小怪談と調合して其灰汁が過足利結地合ひ少く  
 荒るるのうらやうとさるるのうらやうとあれ此編め少くうら立廻りの画の  
 いそぬ色ある山振の花も散實もあられと有るかのやうに人のあつ  
 俗話小譚してわづらやその容易さやうに難きと云龜甲ぢうんを  
 踏のてあらんうらうらと問うると板元もさういふうらうらと強う  
 さういふうらうらと問うると頂小例のかくうらうらの小侍徒が返哥  
 あつて及ぶぬ枝ふ心を懸今更上も下しもあふむに十顛八倒  
 若菜の上二帖託と御祝小袖の梅も鶯櫻も手鞠不手際も  
 邊土染も歌川の画は筆の綾錦摺も分らうらうらと彼相替らう  
 御覧のやどよみひ移らうらうらとあうらうらと舞。

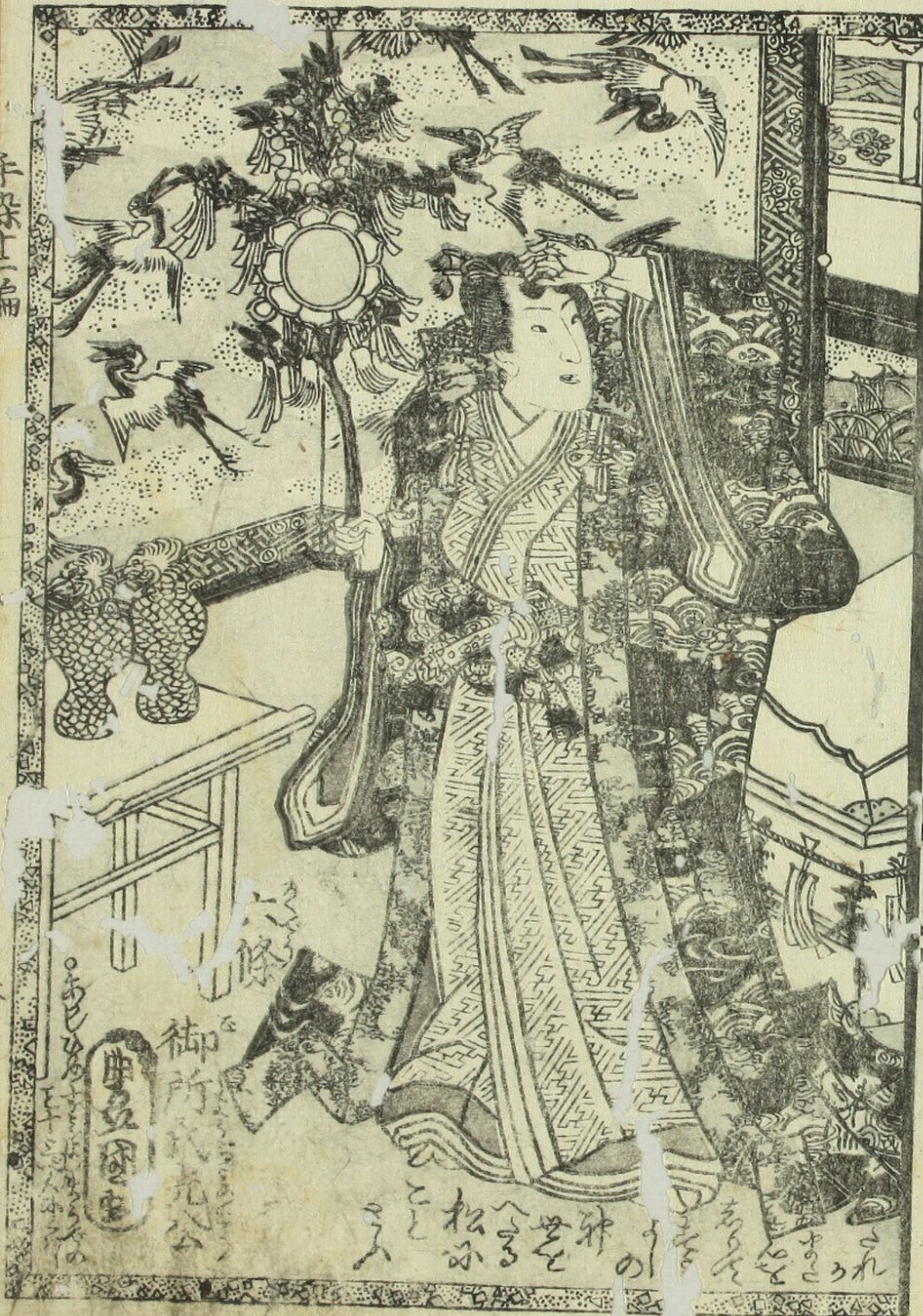
嘉永六年癸丑新刊

笠亭仙果



是の  
 年  
 十  
 二  
 冊  
 仙果作  
 同文毎冊対  
 様





下  
六條

御所  
御所  
御所

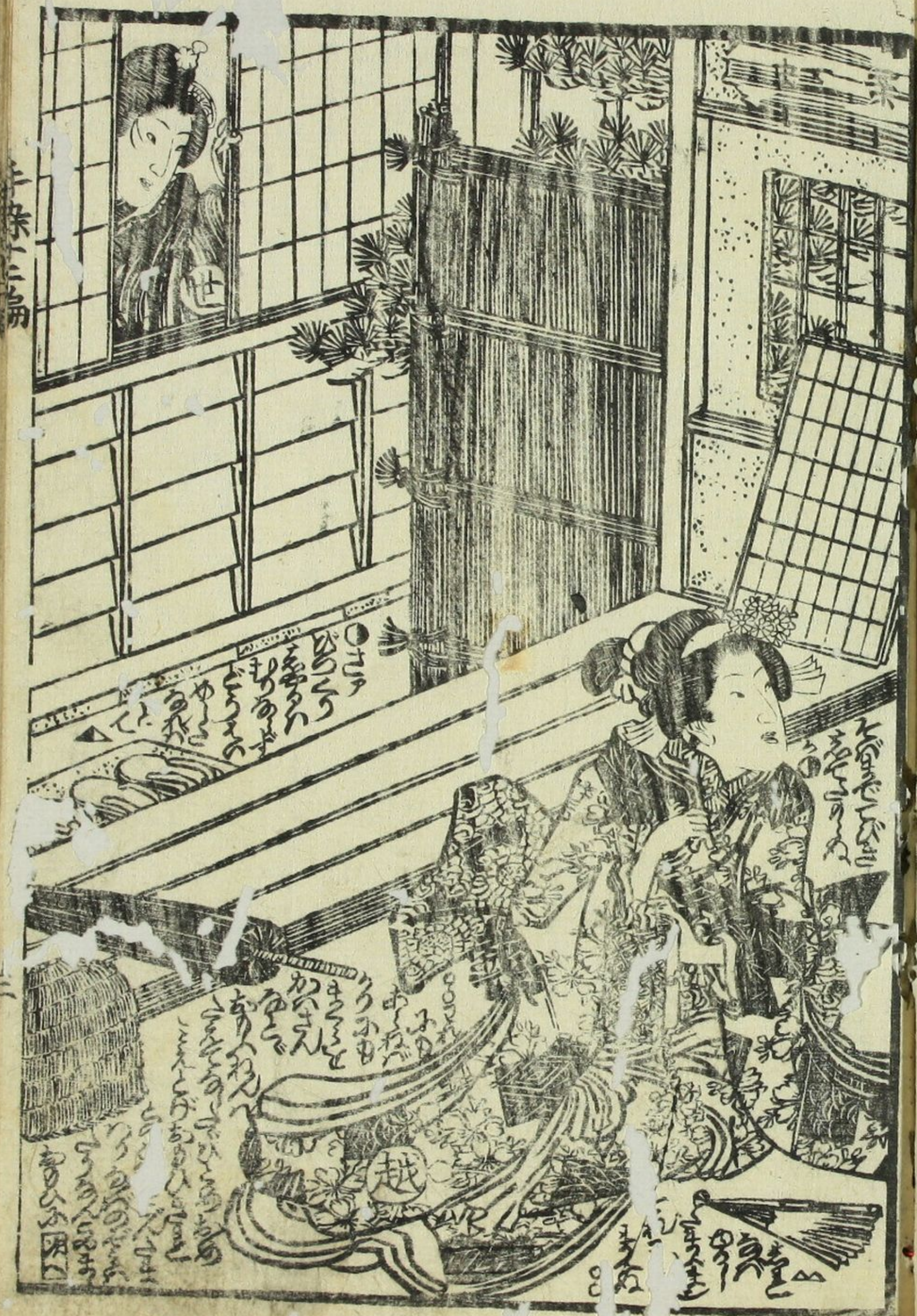
これ  
おの  
を  
松  
へ  
を  
の  
こと  
ま  
入



三  
手  
上  
一  
張

乳  
母  
童  
菜

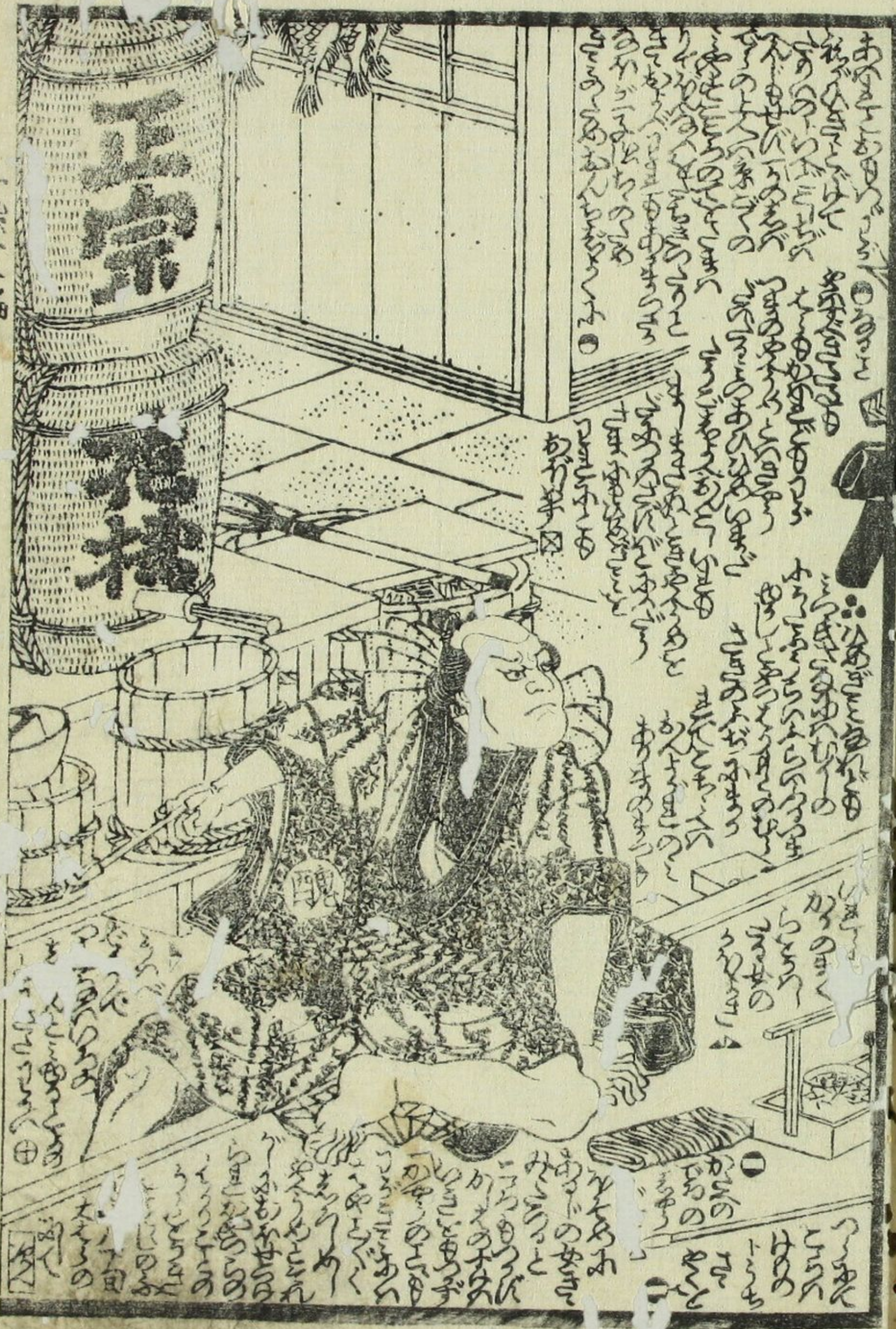
將  
原  
北  
明  
石  
姫



三茶小冊



三茶小冊



上巻 十一

七

Handwritten Japanese text surrounding the illustration, including vertical columns and small annotations.



上巻 十二

三

Handwritten Japanese text surrounding the illustration, including vertical columns and small annotations.

Handwritten text in a cursive script, likely a form of Chinese or Japanese, surrounding the illustration. The text is arranged in vertical columns, with some characters circled or highlighted. The script is dense and fills the space around the central drawing.



Vertical text on the left margin of the page, possibly a page number or a reference.

Small vertical text or mark at the bottom left of the page.

Handwritten text in a cursive script, likely a form of Chinese or Japanese, surrounding the illustration. The text is arranged in vertical columns, with some characters circled or highlighted. The script is dense and fills the space around the central drawing.



Vertical text on the right margin of the page, possibly a page number or a reference.

Small vertical text or mark at the bottom right of the page.

Vertical Japanese text in the top left corner of the left page, likely a chapter title or introductory text.



Small vertical text on the left margin of the left page.

Vertical Japanese text in the top right corner of the right page, likely a chapter title or introductory text.



Small vertical text on the right margin of the right page.

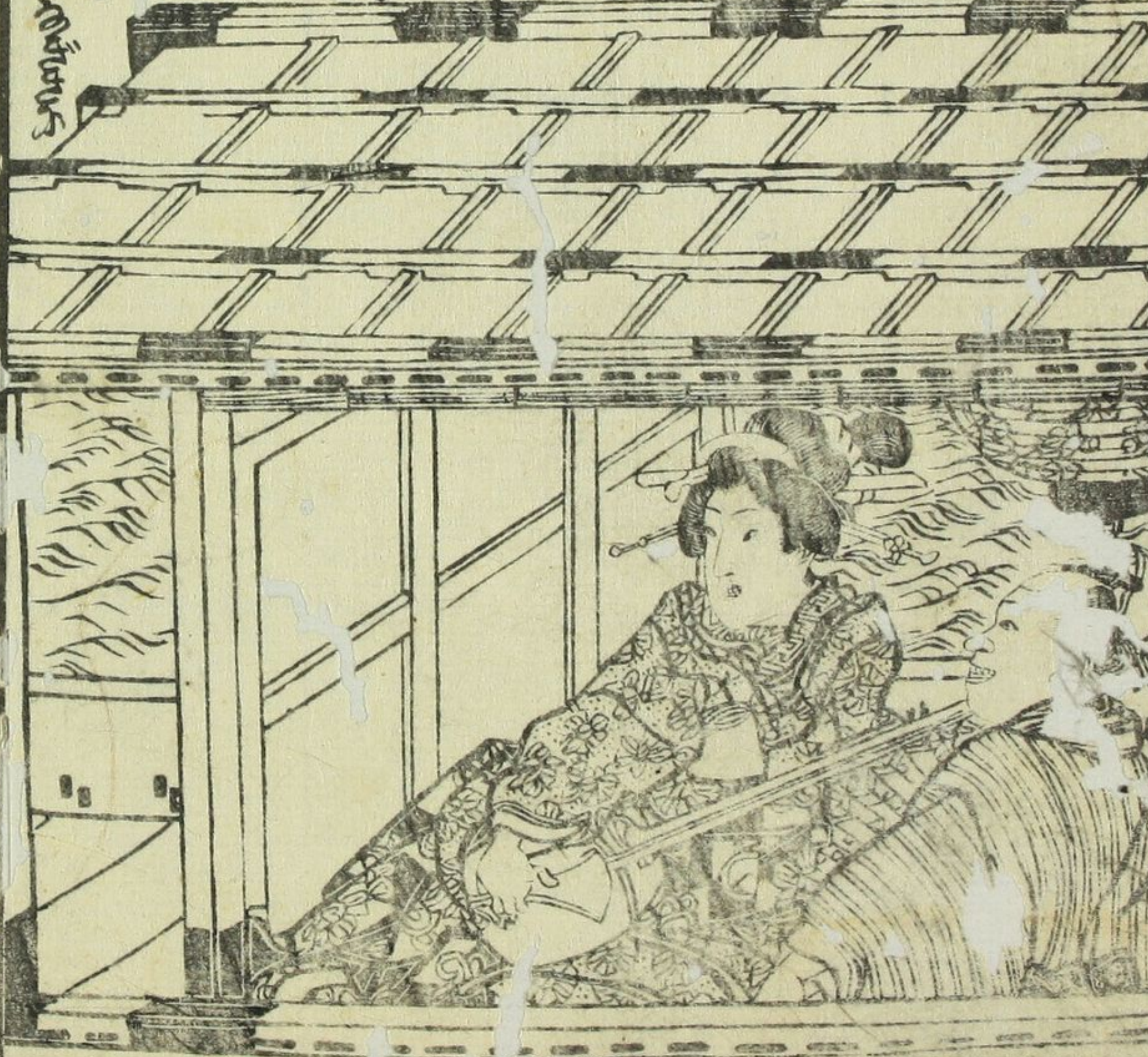


たてまつる御舟  
の御舟に  
おのづから  
おのづから  
おのづから  
おのづから  
おのづから  
おのづから  
おのづから  
おのづから

おのづから  
おのづから  
おのづから  
おのづから  
おのづから  
おのづから  
おのづから  
おのづから  
おのづから  
おのづから



おのづから  
おのづから  
おのづから  
おのづから  
おのづから  
おのづから  
おのづから  
おのづから  
おのづから  
おのづから



1. The first part of the text is a list of names or titles, possibly related to the characters in the illustration. It includes terms like "The first part of the text", "The second part of the text", "The third part of the text", "The fourth part of the text", "The fifth part of the text", "The sixth part of the text", "The seventh part of the text", "The eighth part of the text", "The ninth part of the text", "The tenth part of the text", "The eleventh part of the text", "The twelfth part of the text", "The thirteenth part of the text", "The fourteenth part of the text", "The fifteenth part of the text", "The sixteenth part of the text", "The seventeenth part of the text", "The eighteenth part of the text", "The nineteenth part of the text", "The twentieth part of the text".

2. This section continues the list of names or titles, providing further details or descriptions. It includes terms like "The twenty-first part of the text", "The twenty-second part of the text", "The twenty-third part of the text", "The twenty-fourth part of the text", "The twenty-fifth part of the text", "The twenty-sixth part of the text", "The twenty-seventh part of the text", "The twenty-eighth part of the text", "The twenty-ninth part of the text", "The thirtieth part of the text".



3. The bottom section of the page contains a few lines of text, likely a caption or a short story related to the illustration. It includes terms like "The thirty-first part of the text", "The thirty-second part of the text", "The thirty-third part of the text", "The thirty-fourth part of the text", "The thirty-fifth part of the text".

4. This section contains text written vertically on the left side of the page, above the illustration. It includes terms like "The thirty-sixth part of the text", "The thirty-seventh part of the text", "The thirty-eighth part of the text", "The thirty-ninth part of the text", "The fortieth part of the text".



5. The bottom section of the page contains a few lines of text, likely a caption or a short story related to the illustration. It includes terms like "The forty-first part of the text", "The forty-second part of the text", "The forty-third part of the text", "The forty-fourth part of the text", "The forty-fifth part of the text".





Handwritten Japanese text in the left margin, including the characters '手立二編' (Tateji Ni-hen) written vertically.



Handwritten Japanese text in the right margin, including the characters '手立二編' (Tateji Ni-hen) written vertically.



かかひんと  
かかひんと  
かかひんと  
かかひんと  
かかひんと  
かかひんと  
かかひんと  
かかひんと  
かかひんと  
かかひんと

かかひんと  
かかひんと  
かかひんと  
かかひんと  
かかひんと  
かかひんと  
かかひんと  
かかひんと  
かかひんと  
かかひんと



かかひんと  
かかひんと  
かかひんと  
かかひんと  
かかひんと  
かかひんと  
かかひんと  
かかひんと  
かかひんと  
かかひんと

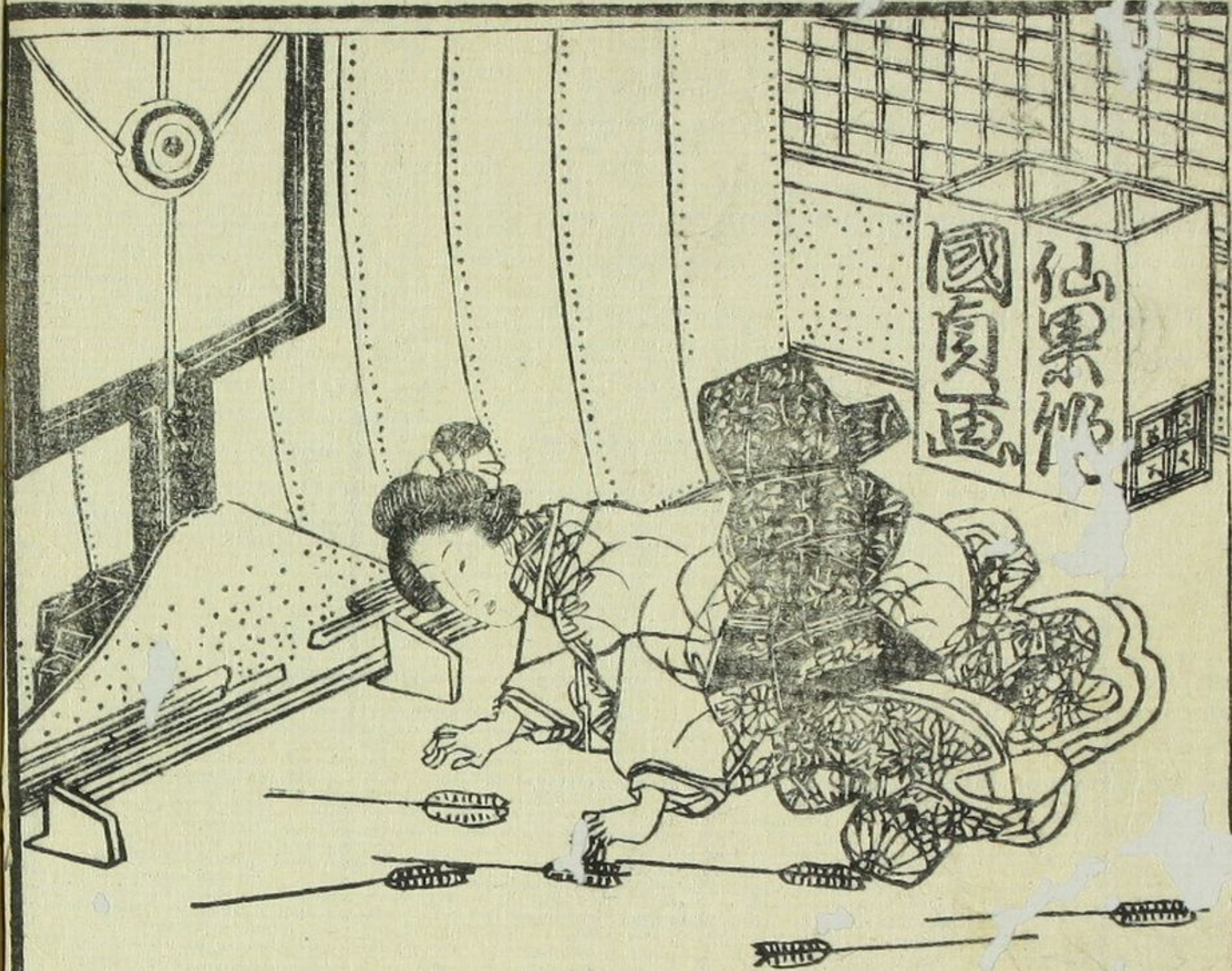
かかひんと  
かかひんと  
かかひんと  
かかひんと  
かかひんと  
かかひんと  
かかひんと  
かかひんと  
かかひんと  
かかひんと



月夜に  
 深の  
 天  
 井  
 舞の  
 圖

井  
 舞の  
 圖

十一



仙  
 果  
 餅  
 手  
 袋  
 上  
 編

ひちま  
 月おび  
 さすくま  
 かどちく  
 んのおつき  
 けまは  
 のり  
 よう  
 かき  
 ひま  
 のの  
 わ  
 か  
 と  
 ね  
 こ  
 う  
 う  
 う  
 う  
 う

こ  
 と  
 を  
 の  
 の  
 の  
 の  
 の  
 の  
 の  
 の  
 の  
 の

か  
 り  
 こ  
 り  
 か  
 り  
 こ  
 り  
 か  
 り  
 こ  
 り  
 か  
 り  
 こ  
 り

十

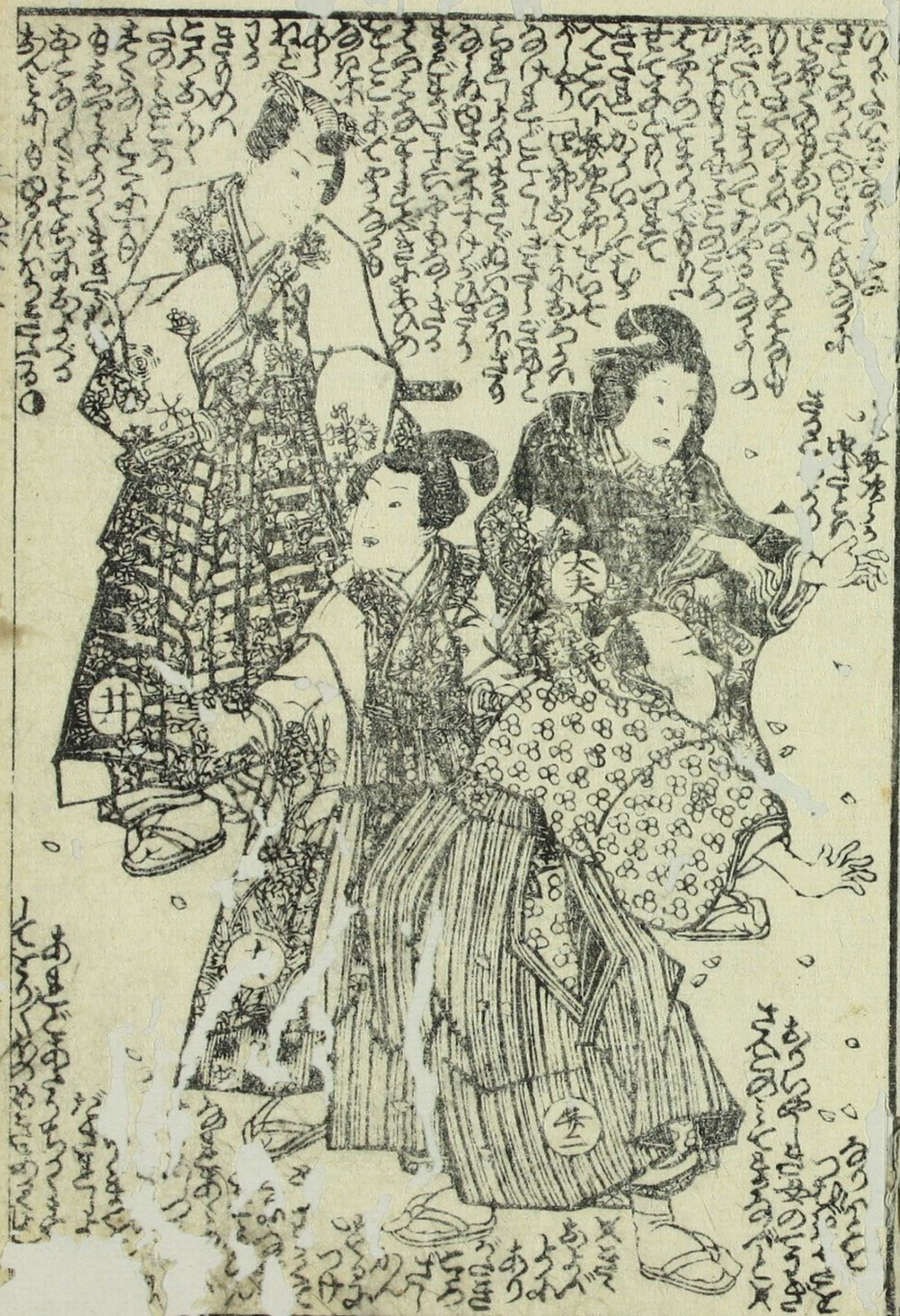


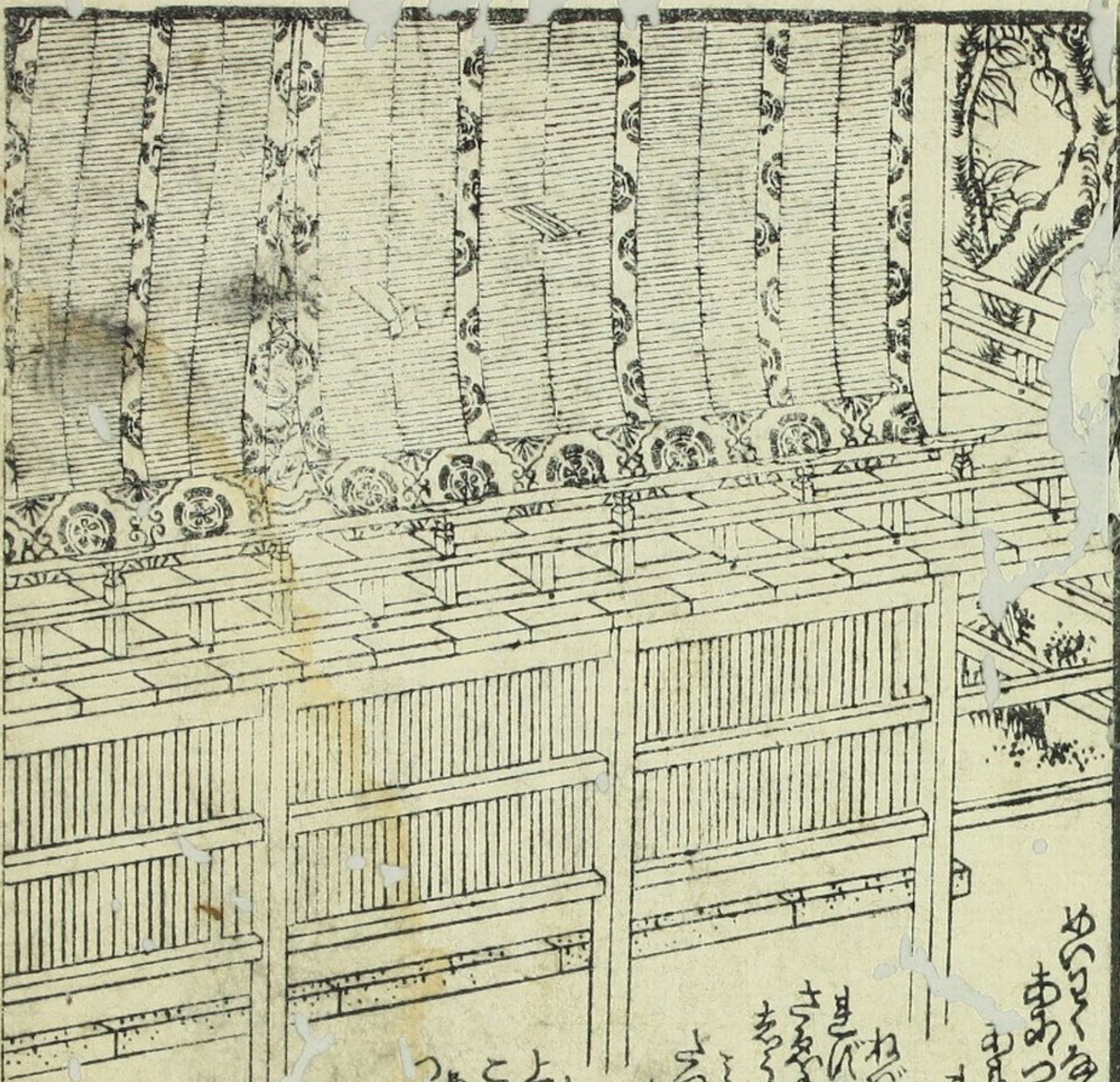
Handwritten text in vertical columns, likely a letter or a scene description, written in a cursive style. The text is densely packed and covers most of the page area.



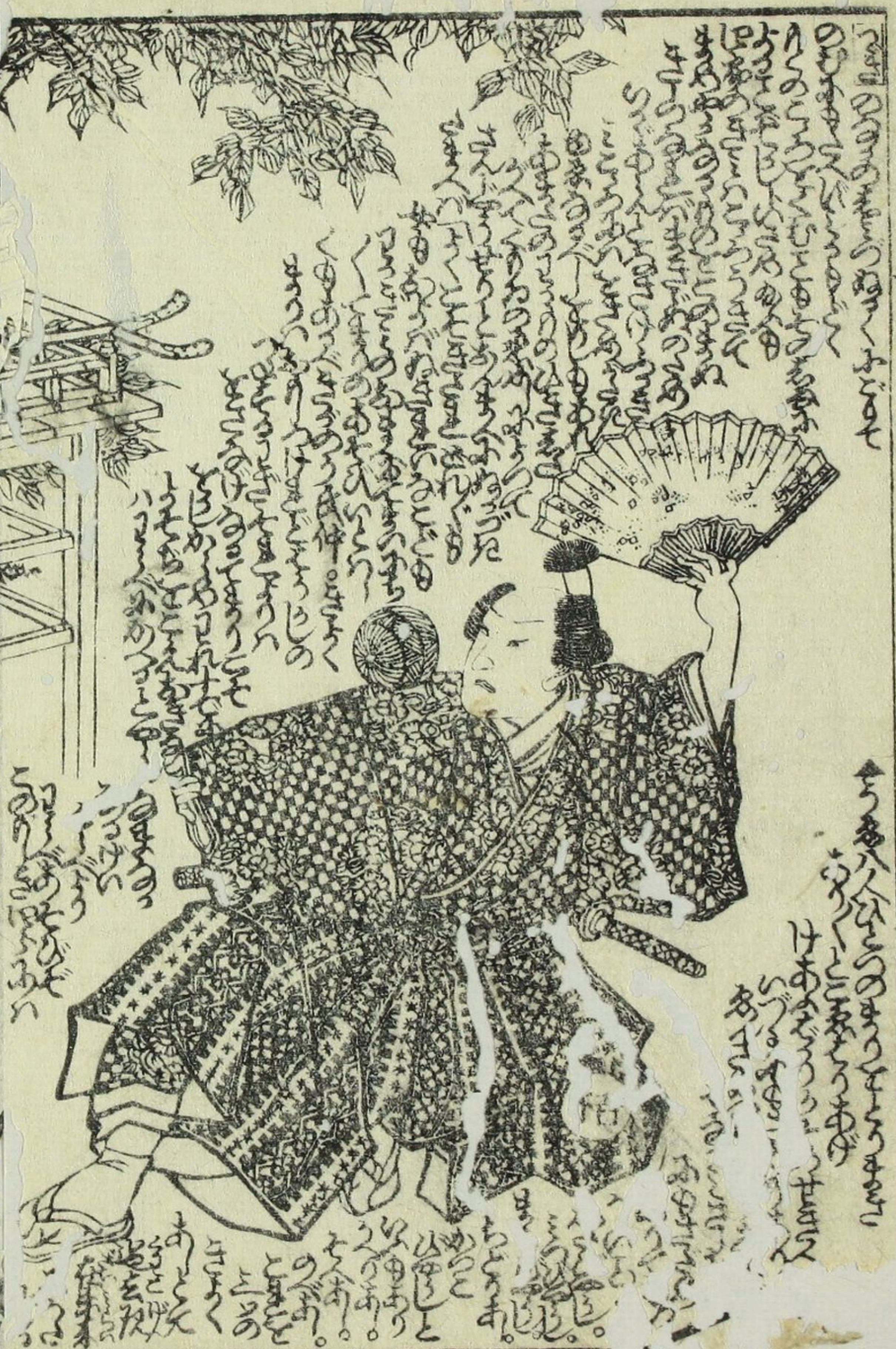
Handwritten text in vertical columns, continuing the letter or scene description from the right page. The text is densely packed and covers most of the page area.







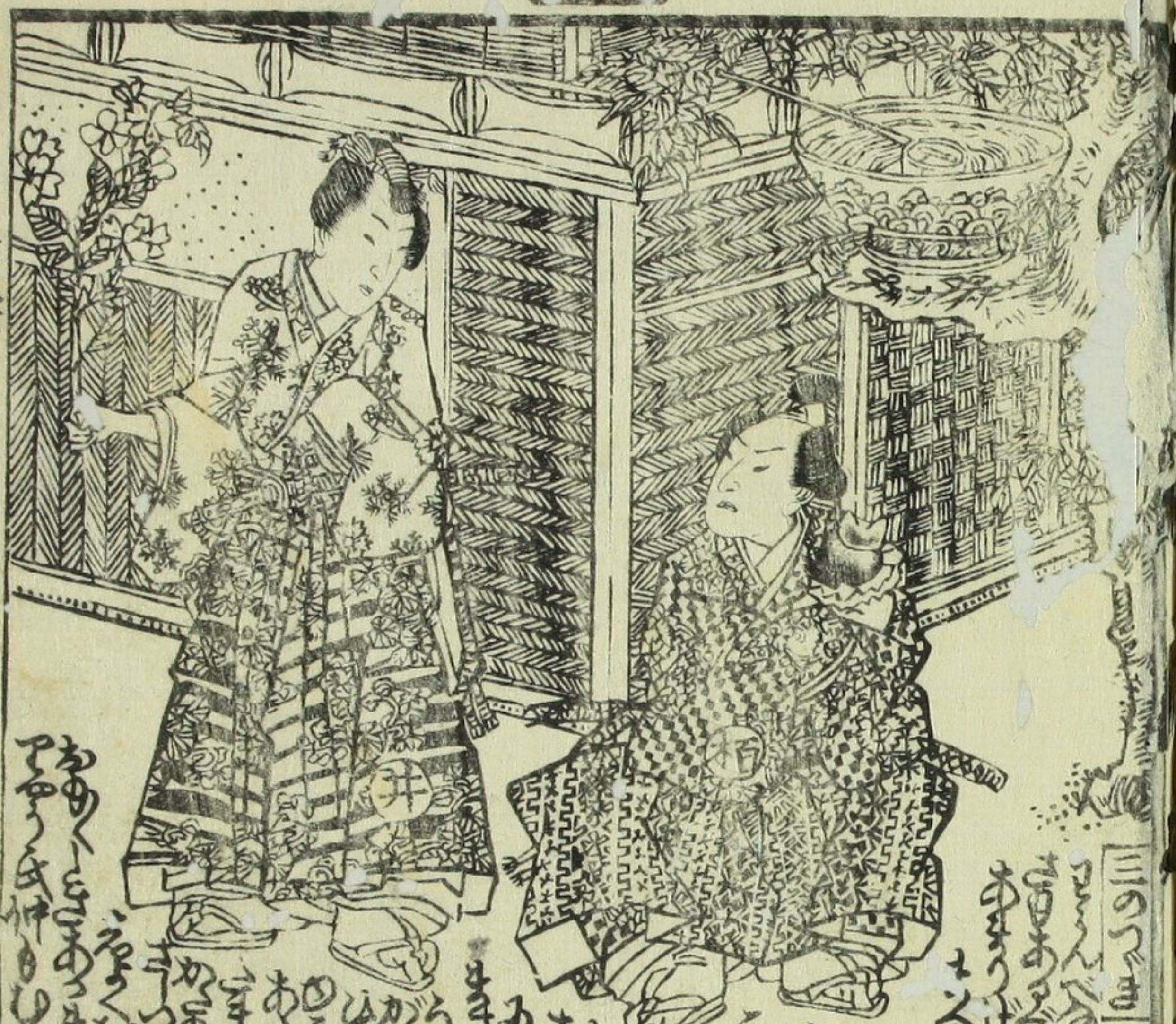
Handwritten Japanese text in vertical columns, likely a playbill or program notes. The text includes names of actors and roles, such as "Uta no Genji" and "Koban".



Handwritten Japanese text in vertical columns, continuing the program notes or providing commentary on the scene depicted in the illustration.







手染十二

Handwritten text in Japanese, likely a commentary or description related to the illustration. The text is arranged in vertical columns, starting from the right side of the page and moving left.



Handwritten text in Japanese, likely a commentary or description related to the illustration. The text is arranged in vertical columns, starting from the right side of the page and moving left.

This page contains a detailed illustration of an interior space. On the left, a tall cabinet with a black and white checkered pattern stands next to a table with a similar pattern. To the right of the table is a chair with a checkered backrest. A small table with a checkered top is positioned in front of the chair. The entire scene is surrounded by dense handwritten Japanese text, likely describing the items and their uses.

This page features a central illustration of a woman in traditional Japanese clothing, including a kimono and a headpiece. She is depicted in a dynamic, seated pose. The illustration is surrounded by handwritten Japanese text, which appears to be a commentary or a list of items related to her attire or the scene.



Handwritten text in the top left corner of the left page, consisting of several lines of cursive Japanese characters.



Handwritten text in the middle left section of the left page, continuing the cursive script.

Handwritten text in the bottom left section of the left page, continuing the cursive script.

Handwritten text in the top right section of the right page, above the illustration.



Handwritten text in the middle right section of the right page, between the top and bottom text blocks.

Handwritten text in the bottom right section of the right page, continuing the cursive script.



仙果作  
國貞畫



あつたての  
きんぎょの  
うらみ  
あつたての  
きんぎょの  
うらみ  
あつたての  
きんぎょの  
うらみ

天保九年戊戌初春新彫

天保九年  
藤紫田舎源氏

柳亭種彦作  
歌川國貞画

佐野渡元敵懸橋

全六冊

櫻風呂花半開

全四冊

復讐言國字茶話支庫

全四冊

松原ゆゆの藤浪

全八冊

金花猫婆化生鋪

全六冊

昔大槌たつた  
茶室のいぢけ  
二冊  
浦島高彦

美艶仙女香  
馬油養女香

三日月  
天保九年



書物錦繪  
團扇地紙

月屋

江戸通油町

鶴屋喜右衛門

