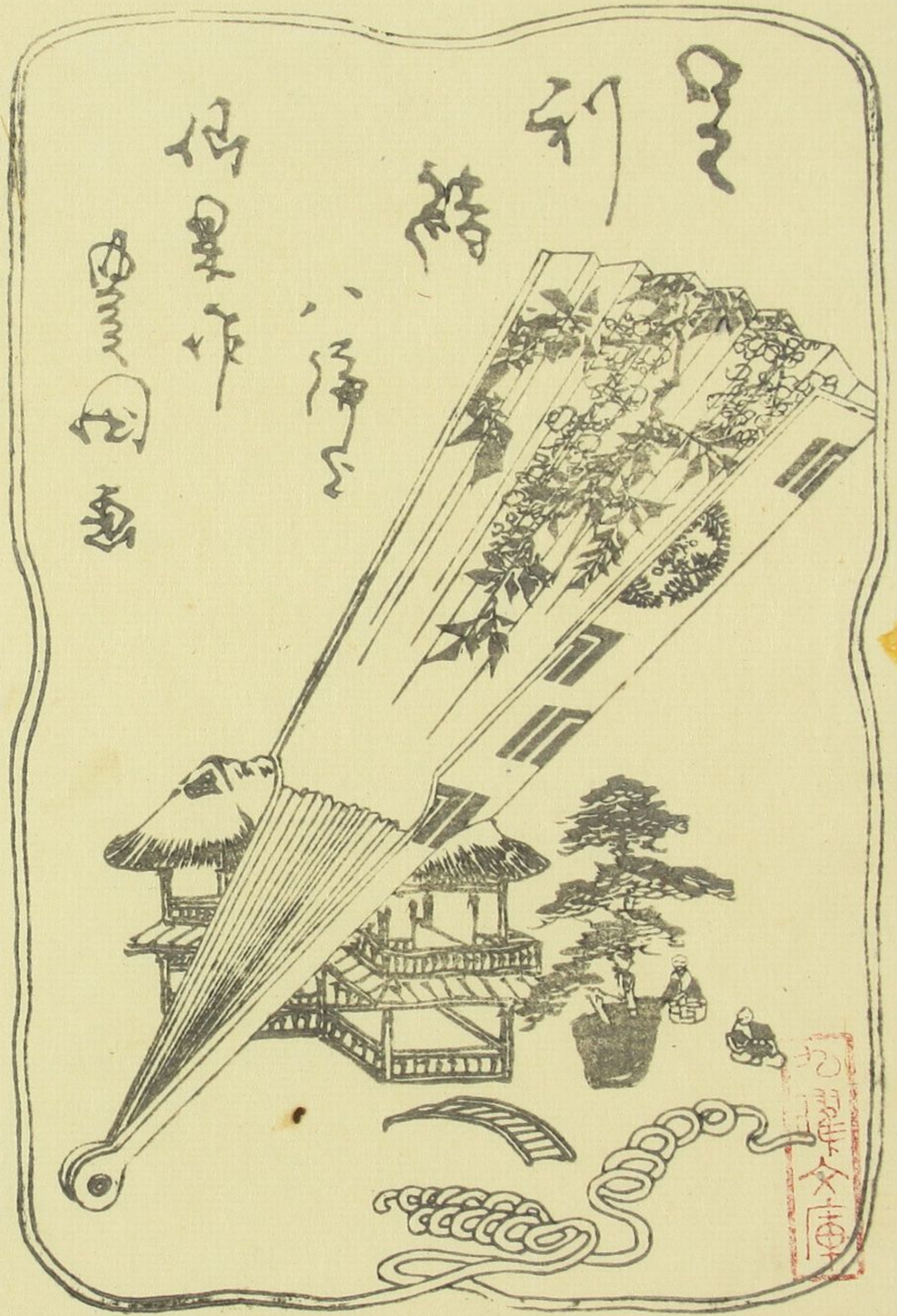




Handwritten Japanese calligraphy in cursive style (sōsho). The text is arranged in several vertical columns. The characters are difficult to decipher precisely but appear to include names and possibly a date or location. The top right column contains the characters '時' (time) and '子' (child). The middle right column contains '女' (woman) and '子' (child). The bottom right column contains '子' (child) and '子' (child). The top left column contains '子' (child) and '子' (child). The middle left column contains '子' (child) and '子' (child).





仙果作
結
利
三

仙果作

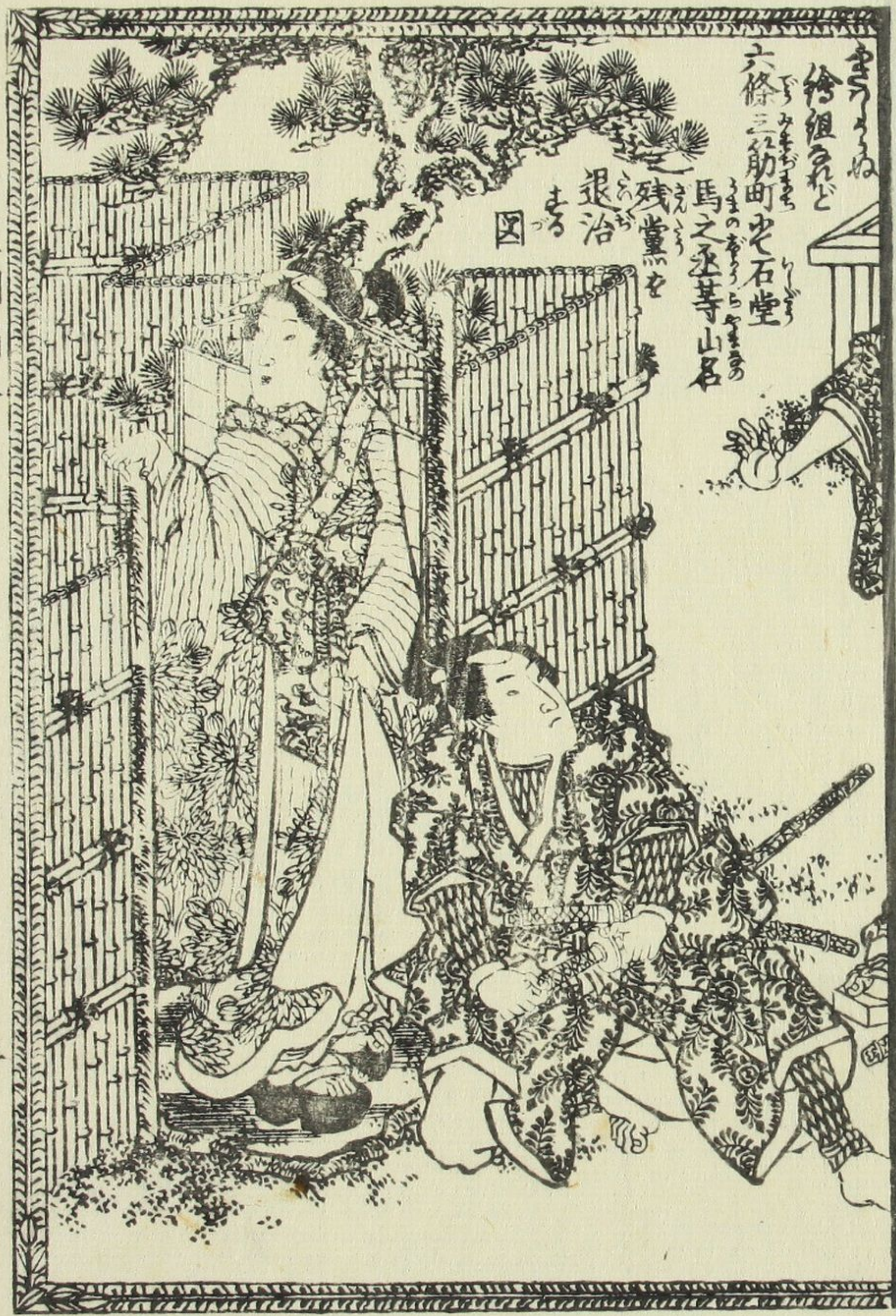
画や彫物の竜の威勢がよと云々
 呼ば講釋場心そあり〜聴るれ源氏の本で見時合得と所か世界が別て衣冠
 束帯能袴歌骨牌をしろけ〜様不誰とも知己おせん義大夫や新内へ出る折付る
 けれ若菜の巻も若草や猪之助の話もさうもそれぞわねど今世のあ〜洒落さ
 てゑ〜手拭も有職紋やら名物列衣手看板書も上代極外題のつが〜陸奥紙壺の碑書
 尽苦趣向と変て足利絹は五衣と纏立〜似て非るおが流行る〜見〜先師の案の
 的の外まの桂樹が射の楊弓の扇小秋の風た〜画ける藤の花房の長く栄えて此点の色
 の由縁のやれれも筆と接穂の芽出〜の作者師匠同様取ま又此編も朧月夜乃
 面影なる〜唯〜の氏克が影響の毛〜の割〜も知ると一ツの
 ころえふは留〜と帯ふふるむ

辛亥孟春

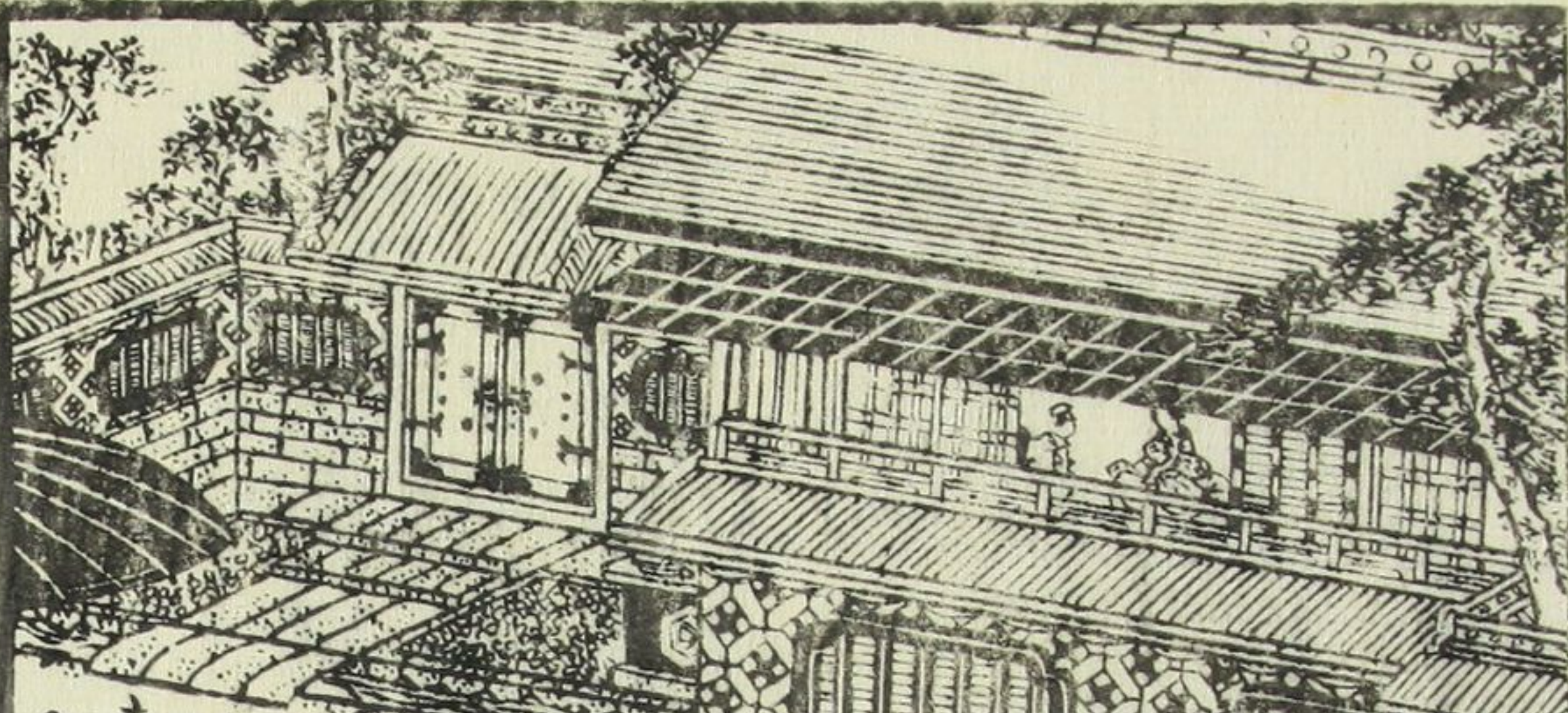
笠亭仙果



正利月

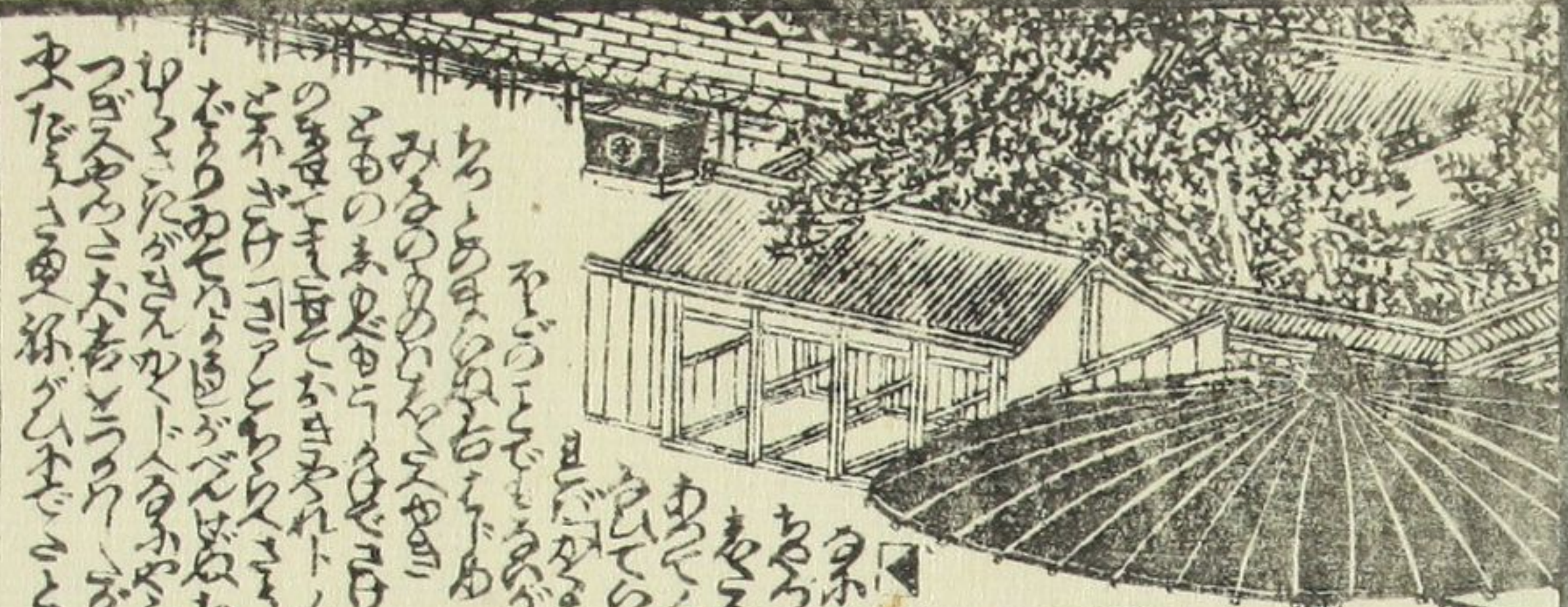


八手



Handwritten text in Japanese, likely a description or commentary on the scene above.

Handwritten text in Japanese, continuing the commentary or providing further details.



Handwritten text in Japanese, positioned above the illustration.



Handwritten text in Japanese, positioned to the left of the figures.

Handwritten text in Japanese, positioned below the figures.



Handwritten text in the upper right corner of the right page, written vertically in Japanese characters.

Handwritten text in the lower right corner of the right page, written vertically in Japanese characters.



Handwritten text in the upper left corner of the left page, written vertically in Japanese characters.

Handwritten text in the middle left section of the left page, written vertically in Japanese characters.

Handwritten text in the lower left section of the left page, written vertically in Japanese characters.



Handwritten text in a cursive script, likely a commentary or a story related to the illustration. The text is arranged in vertical columns, starting from the right side of the page and moving towards the left. It appears to be a traditional Japanese form of writing, possibly a haikai or a similar poetic form.



Handwritten text in a cursive script, continuing the commentary or story from the illustration. The text is arranged in vertical columns, starting from the right side of the page and moving towards the left.

Handwritten text at the top right of the page, possibly a title or a reference.

丁巳春錦橋堂新板

寐復の天奇藥
 一服代
 小児の病を治すに
 最も効果的なり
 江戸中橋廣小路
 山田屋庄次郎

精製 **白妙** 卅二銅
 清浄 一包代
 功効 一血の
 能 用ひ

御藥 **固齒散** 大瓶百圓
 功効 一血の
 能 用ひ

庄 地本 江戸中橋廣小路
山田屋庄次郎

角 文素箱 中形山 東 菴
 三冊京山 作

雛鶴世湯壽 紅摺 山東菴京山作
 一冊一陽齋豊國画

英雄五分 五編万亭應賀作
 一冊一陽齋豊國画

葛葉九重錦 五編万亭應賀作
 一冊一陽齋豊國画

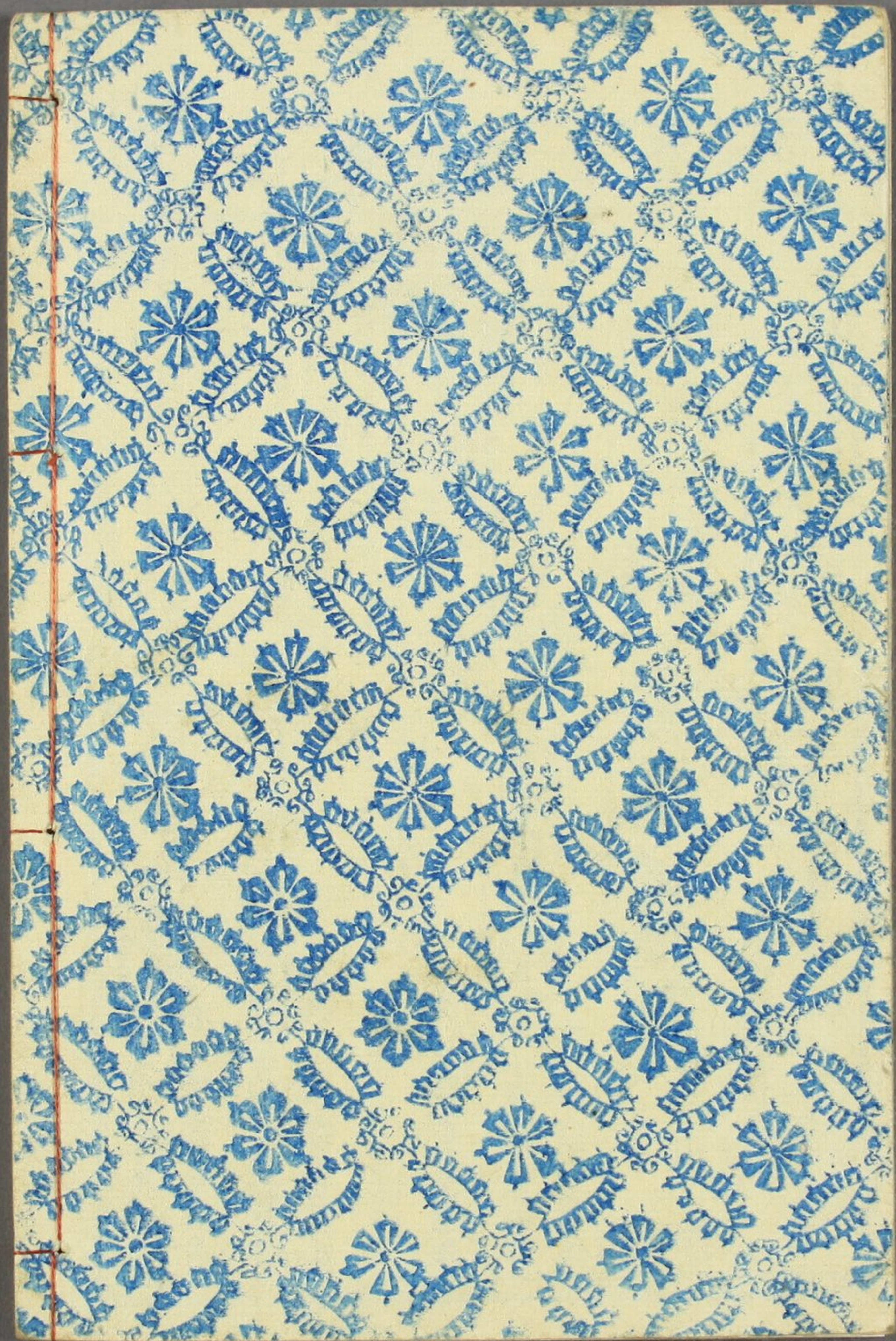
浮寐鳥朧連 五編空中樓花咲作
 一冊一陽齋豊國画

笠立亭仙果作
一陽齋豊國画

合巻下りて
 永井春樹
 五八人ともひきつぎ
 一陽齋豊國画



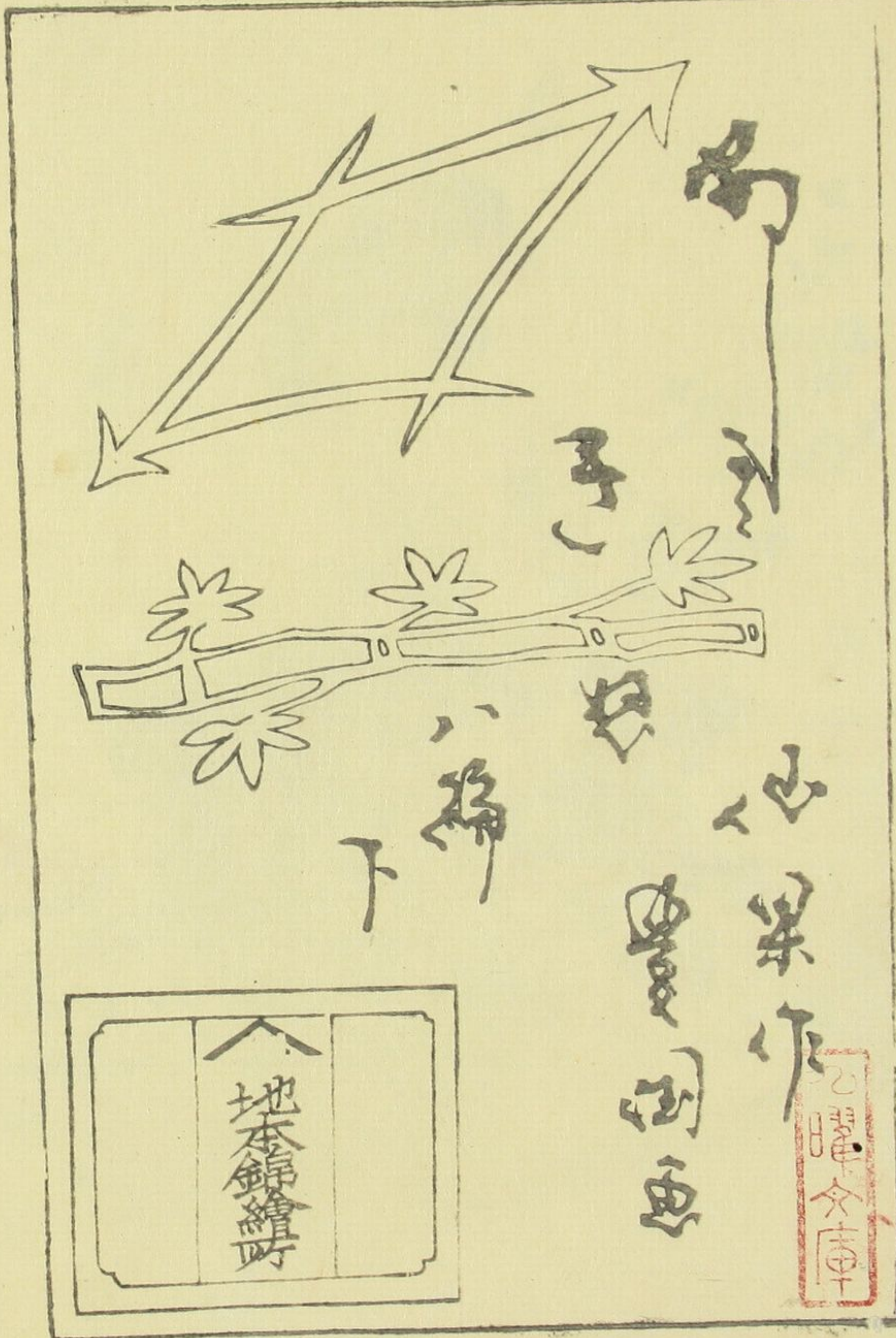
清書 金川
 唯
 江戸中橋廣小路
 山田屋庄次郎







此圖繪於...
 一、此圖繪於...
 二、此圖繪於...
 三、此圖繪於...
 四、此圖繪於...
 五、此圖繪於...
 六、此圖繪於...
 七、此圖繪於...
 八、此圖繪於...
 九、此圖繪於...
 十、此圖繪於...

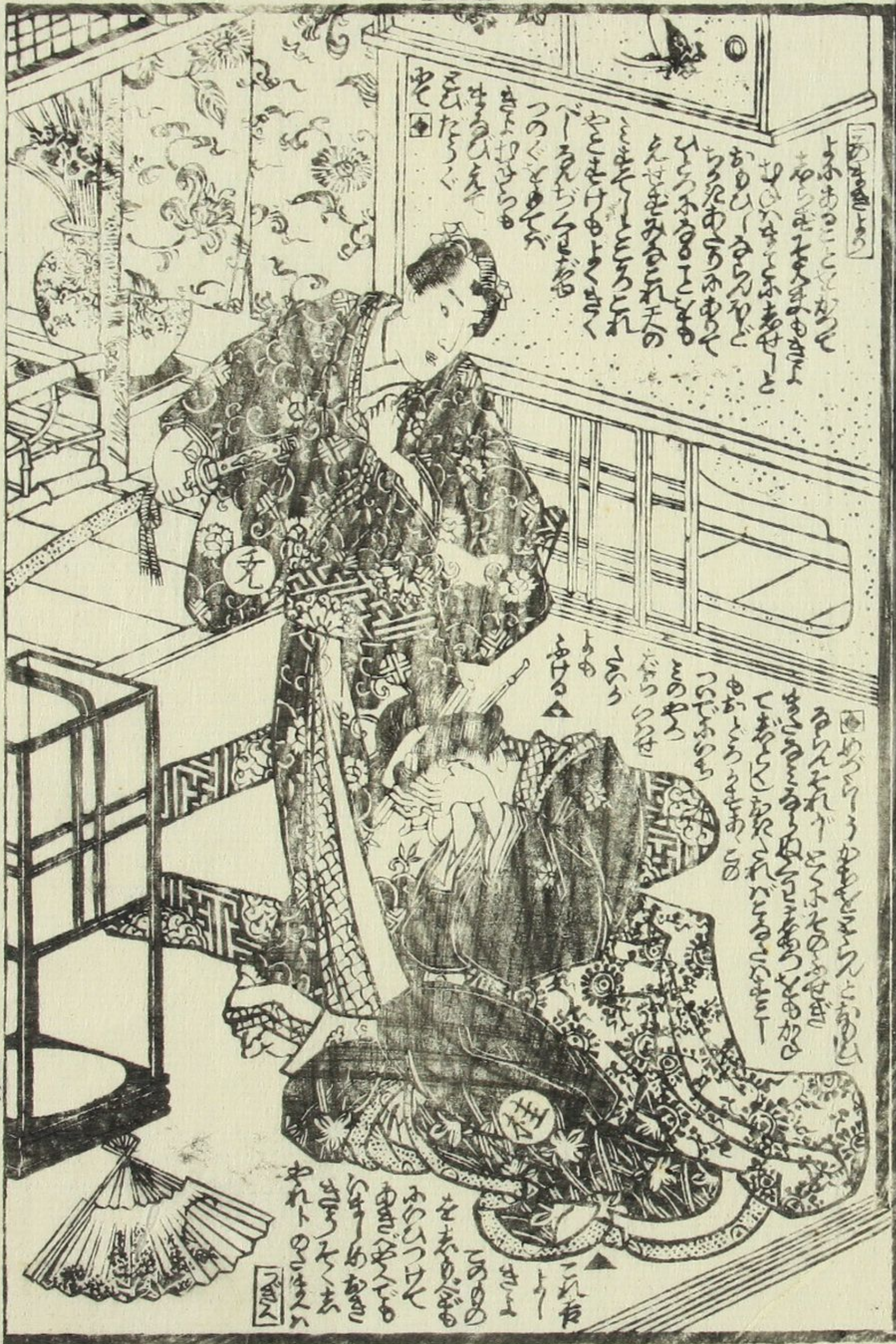


Handwritten text in a cursive script, likely a form of shorthand or a specific dialect, covering the top and bottom portions of the page. The text is arranged in several columns, with some lines appearing to be part of a dialogue or a narrative. There are small rectangular boxes containing characters interspersed within the text.



Handwritten text in a cursive script, similar to the left page, covering the top and bottom portions of the page. The text is arranged in several columns, with some lines appearing to be part of a dialogue or a narrative. There are small rectangular boxes containing characters interspersed within the text.





Handwritten text in a vertical column at the top of the right page, likely serving as a title or introductory text for the illustration below.



Handwritten text in a vertical column at the bottom of the right page, providing commentary or a narrative for the illustration.

Handwritten text in a vertical column at the top of the left page, likely serving as a title or introductory text for the illustration below.



Handwritten text in a vertical column at the bottom of the left page, providing commentary or a narrative for the illustration.

