

桐 帝

壺 木



Handwritten text in Arabic script, likely a religious or philosophical treatise. The text is written in a cursive style and is contained within a rectangular border. The script is dense and fills most of the page.

Handwritten text in Arabic script, likely a religious or philosophical treatise. The text is written in a cursive style and is contained within a rectangular border. The script is dense and fills most of the page.

おりのしよとてきくへきりてけりてくちよの
路源氏のしよとてきくへきりてけりてくちよの
くりてけりてくちよのしよとてきくへきり
まらかりてきくへきりてけりてくちよの
る天竺のしよとてきくへきりてけりてくちよの
よ天竺のしよとてきくへきりてけりてくちよの
いら天竺のしよとてきくへきりてけりてくちよの
く天竺のしよとてきくへきりてけりてくちよの
よ天竺のしよとてきくへきりてけりてくちよの
命天竺のしよとてきくへきりてけりてくちよの
あ天竺のしよとてきくへきりてけりてくちよの

づみのけりてきくへきりてけりてくちよの
くちよのしよとてきくへきりてけりてくちよの
とくちよのしよとてきくへきりてけりてくちよの
しよとてきくへきりてけりてくちよの
くちよのしよとてきくへきりてけりてくちよの
あ天竺のしよとてきくへきりてけりてくちよの
のしよとてきくへきりてけりてくちよの
くちよのしよとてきくへきりてけりてくちよの
のしよとてきくへきりてけりてくちよの
くちよのしよとてきくへきりてけりてくちよの
あ天竺のしよとてきくへきりてけりてくちよの
のしよとてきくへきりてけりてくちよの
くちよのしよとてきくへきりてけりてくちよの
あ天竺のしよとてきくへきりてけりてくちよの

Handwritten text in a cursive script, likely a historical document or manuscript. The text is written in a dark ink on aged paper. It appears to be a list or a series of entries, possibly related to a collection or inventory. The script is dense and difficult to decipher without specialized knowledge of the language or dialect used.

Handwritten text in a cursive script, similar to the one on the opposite page. It is written in a dark ink on aged paper. The text is dense and appears to be a continuation of the list or series of entries from the previous page. The script is consistent with the one on the opposite page.

同座

地

Handwritten text in a cursive script, likely a form of shorthand or a specific dialect. The text is written in a single column on the right page of an open book. There are several small annotations in Chinese characters interspersed within the main text.

善才一匹馬以約 惟无女三當

三當

Handwritten text in a cursive script, likely a form of shorthand or a specific dialect. The text is written in a single column on the left page of an open book. There are several small annotations in Chinese characters interspersed within the main text.

三當

明石三當

Handwritten text in a cursive script, likely a form of Arabic or Persian calligraphy, filling the right page of the manuscript. The text is written in a dense, flowing style with many loops and flourishes.

Handwritten text in a cursive script, likely a form of Arabic or Persian calligraphy, filling the left page of the manuscript. The text is written in a dense, flowing style with many loops and flourishes.

五馬馬路

Handwritten text in a cursive script, likely a historical record or a personal diary entry. The text is written in a single column on the right page of an open book. The characters are dense and fluid, characteristic of early modern Japanese calligraphy.

Handwritten text in a cursive script, continuing from the previous page. The text is written in a single column on the left page of an open book. The characters are dense and fluid, characteristic of early modern Japanese calligraphy.

木枯せ當

甲斐の山田三高

Handwritten text in a cursive script, likely a historical document or manuscript. The text is written in a dark ink on aged paper. It consists of approximately 15 lines of text, starting with a large initial character. The script is dense and characteristic of early modern Japanese writing.

Handwritten text in a cursive script, likely a historical document or manuscript. The text is written in a dark ink on aged paper. It consists of approximately 15 lines of text, starting with a large initial character. The script is dense and characteristic of early modern Japanese writing.

Handwritten text in a cursive script, likely a historical document or manuscript. The text is written in a dark ink on aged paper. It consists of approximately 15 lines of text, starting with a large initial character. The script is dense and characteristic of early modern Japanese writing.

Handwritten text in a cursive script, likely a historical document or manuscript. The text is written in a single column on the right page of an open book. The script is dense and characteristic of early modern Japanese calligraphy.

Handwritten text in a cursive script, likely a historical document or manuscript. The text is written in a single column on the left page of an open book. The script is dense and characteristic of early modern Japanese calligraphy.

8

Handwritten text in a cursive script, likely a historical document or manuscript. The text is written in a dense, flowing style across approximately 12 lines. The characters are dark and well-defined against the aged paper background.

Handwritten text in a cursive script, likely a historical document or manuscript. The text is written in a dense, flowing style across approximately 12 lines. The characters are dark and well-defined against the aged paper background.

Handwritten text in a cursive script, likely Persian or Arabic, filling the right page of the manuscript. The text is arranged in approximately 15 horizontal lines, written from right to left. The script is dense and characteristic of historical Islamic manuscripts.

Handwritten text in a cursive script, likely Persian or Arabic, filling the left page of the manuscript. The text is arranged in approximately 15 horizontal lines, written from right to left. The script is dense and characteristic of historical Islamic manuscripts.

Handwritten text in Arabic script, likely a religious or philosophical treatise. The text is written in a cursive style and is contained within a rectangular border. The script is dense and fills most of the page.

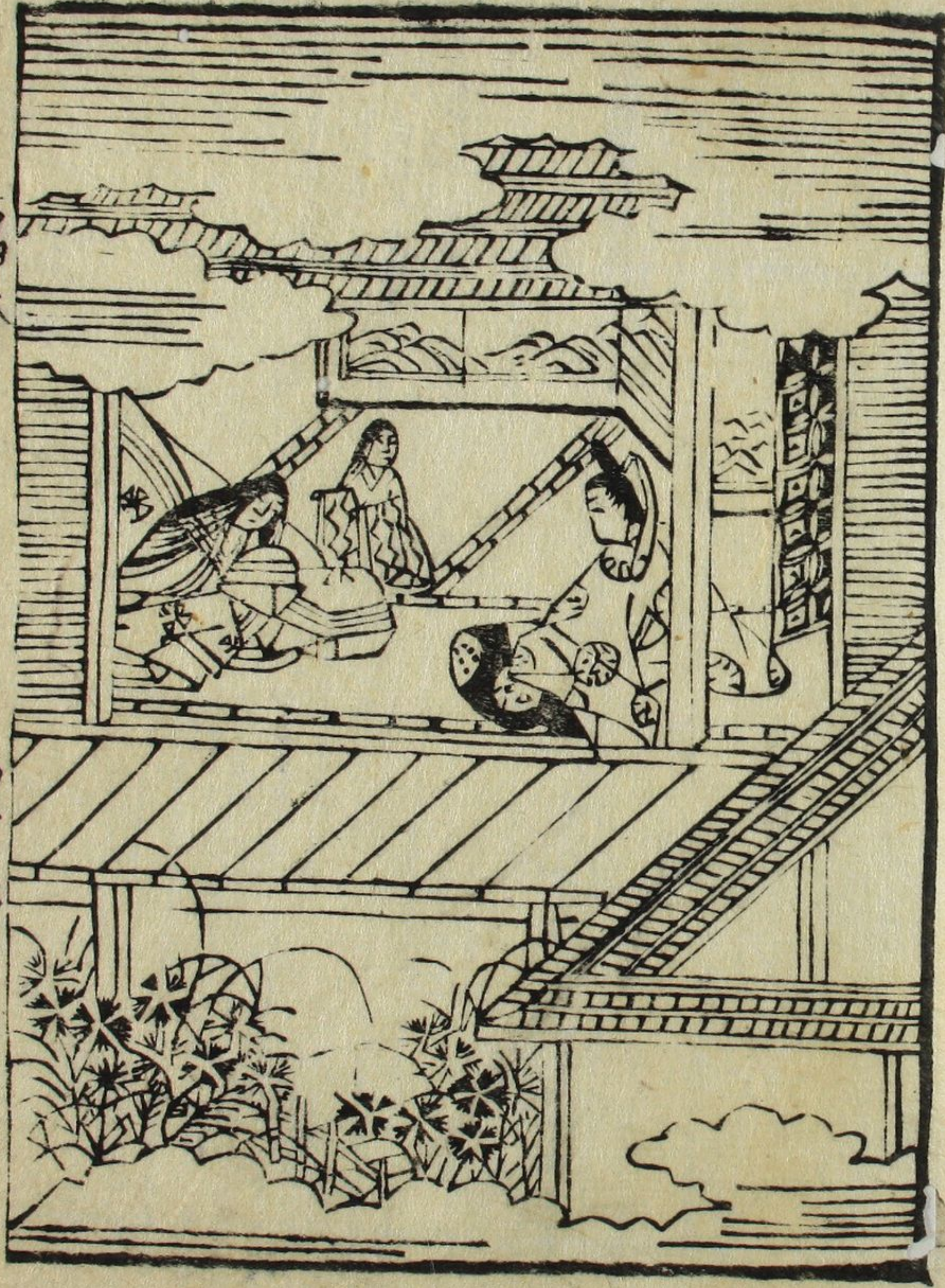
Small handwritten text or marginalia located at the top left of the page.

Small handwritten text or marginalia located at the top right of the page.

Handwritten text in Arabic script, continuing from the previous page. The text is written in a cursive style and is contained within a rectangular border. The script is dense and fills most of the page.

Small handwritten text or marginalia located at the bottom left of the page.

Small handwritten text or marginalia located at the bottom right of the page.



一
二
三
四
五
六
七
八
九
十
十一
十二
十三
十四
十五
十六
十七
十八
十九
二十
二十一
二十二
二十三
二十四
二十五
二十六
二十七
二十八
二十九
三十
三十一
三十二
三十三
三十四
三十五
三十六
三十七
三十八
三十九
四十
四十一
四十二
四十三
四十四
四十五
四十六
四十七
四十八
四十九
五十
五十一
五十二
五十三
五十四
五十五
五十六
五十七
五十八
五十九
六十
六十一
六十二
六十三
六十四
六十五
六十六
六十七
六十八
六十九
七十
七十一
七十二
七十三
七十四
七十五
七十六
七十七
七十八
七十九
八十
八十一
八十二
八十三
八十四
八十五
八十六
八十七
八十八
八十九
九十
九十一
九十二
九十三
九十四
九十五
九十六
九十七
九十八
九十九
一百

Handwritten text in a cursive script, likely Persian or Urdu, filling the right page of the manuscript. The text is arranged in approximately 15 horizontal lines, written from right to left. The script is dense and fluid, with some characters showing signs of being in a specific dialect or style. The page is otherwise blank, with some minor staining and a small mark at the top right.

Handwritten text in a cursive script, likely Persian or Urdu, filling the left page of the manuscript. The text is arranged in approximately 15 horizontal lines, written from right to left. The script is dense and fluid, with some characters showing signs of being in a specific dialect or style. The page is otherwise blank, with some minor staining and a small mark at the top left.

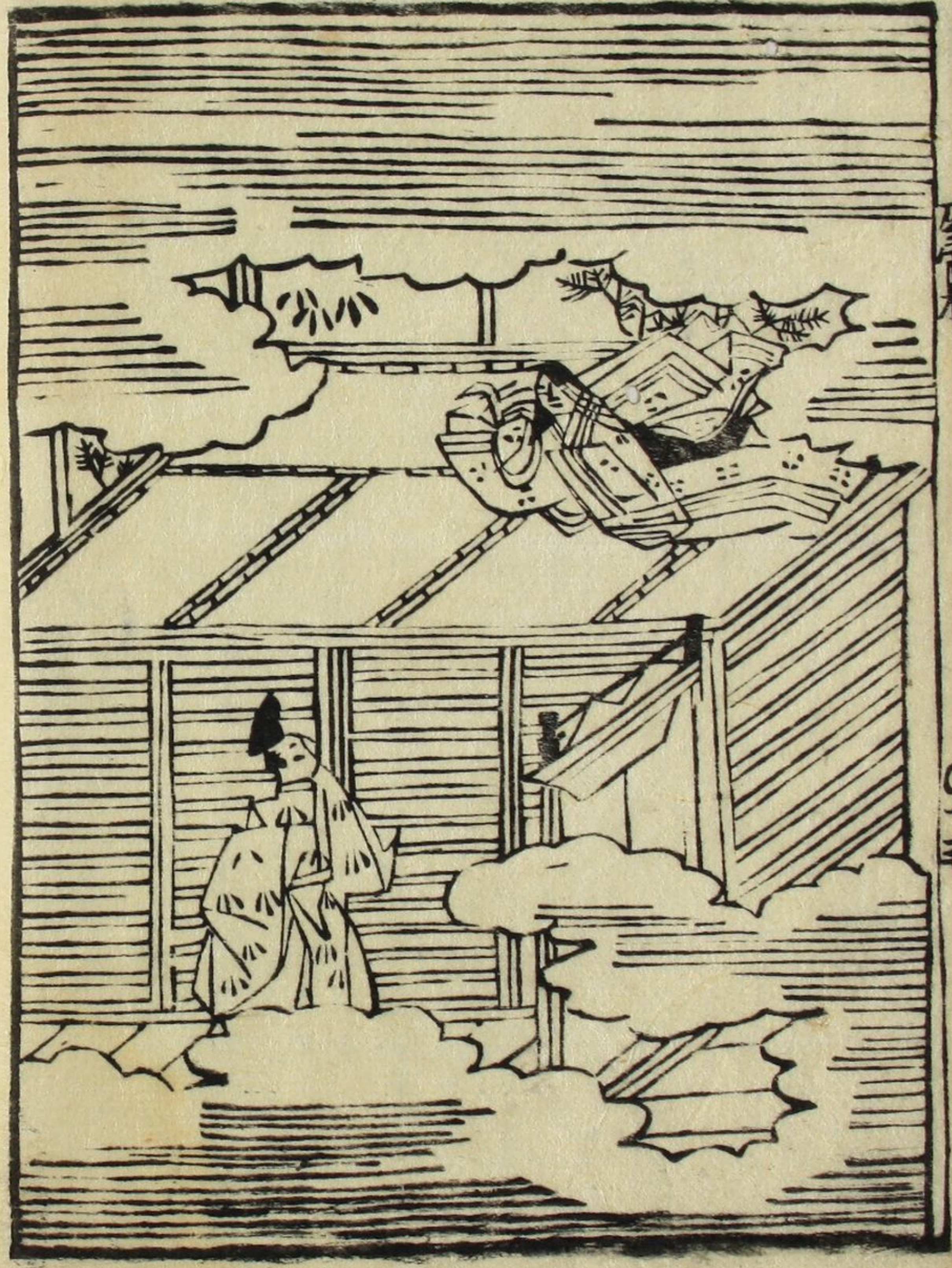
Handwritten text in Arabic script, likely a religious or philosophical treatise. The text is arranged in approximately 15 horizontal lines within a rectangular border. The script is dense and cursive, characteristic of classical Arabic manuscripts. The lines are roughly parallel to each other, with some variations in line length and spacing between characters.

Handwritten text in Arabic script, continuing the text from the previous page. It is also arranged in approximately 15 horizontal lines within a rectangular border. The script is consistent with the previous page, showing a high level of calligraphic skill. The text is well-aligned and fills the page area effectively.

Handwritten text in Arabic script, likely a religious or philosophical treatise. The text is written in a cursive style and is contained within a rectangular border. The script is dense and fills most of the page.

Handwritten text in Arabic script, continuing from the previous page. The text is written in a cursive style and is contained within a rectangular border. The script is dense and fills most of the page.

Handwritten text in a cursive script, likely Arabic or Persian, arranged in approximately 15 vertical columns. The script is dense and fills most of the page area.



Handwritten text in Arabic script, likely a religious or philosophical treatise, written in a cursive style. The text is arranged in approximately 15 horizontal lines across the page.

Handwritten text in Arabic script, likely a religious or philosophical treatise, written in a cursive style. The text is arranged in approximately 15 horizontal lines across the page.

1197

1197

Handwritten text in a cursive script, likely a historical document or manuscript. The text is written in a dark ink on aged paper. It consists of approximately 15 lines of text, starting with a long horizontal line that spans the width of the page. The script is dense and flowing, characteristic of a cursive hand. There are some small annotations or corrections in the text, such as a small '心' character above a line.

Handwritten text in a cursive script, likely a historical document or manuscript. The text is written in a dark ink on aged paper. It consists of approximately 15 lines of text, starting with a long horizontal line that spans the width of the page. The script is dense and flowing, characteristic of a cursive hand. There are some small annotations or corrections in the text, such as a small '心' character above a line and a small '心' character below a line.

翠のいどやふあがめはるの甲はれはるい
 ていひこのあもるんしとあはるい
 ひあがるまきこもたあつしとあはれ
 もいりてみこあはるるよのあはれ
 てあぞくのひりひすのあはるい
 りくこでわらわあもあつしとあはれ
 あひてわらひるどすけりひもあはれ
 しとあはるるあはるるあはるる
 らそあはるるあはるるあはるる
 のあはるるあはるるあはるる
 とあはるるあはるるあはるる



Handwritten text in Arabic script, likely a religious or philosophical treatise. The text is written in a cursive style and includes several lines of prose. Some words are written in a larger, more decorative font, possibly indicating emphasis or specific terminology. The text is contained within a rectangular border.

Handwritten text in Arabic script, likely a religious or philosophical treatise. The text is written in a cursive style and includes several lines of prose. Some words are written in a larger, more decorative font, possibly indicating emphasis or specific terminology. The text is contained within a rectangular border.

Handwritten text in Arabic script, likely a religious or philosophical treatise. The text is written in a cursive style and includes several lines of prose. There are some small annotations or corrections in the text, such as "بسم الله" and "الحمد لله".

Handwritten text in Arabic script, continuing the text from the previous page. The text is written in a cursive style and includes several lines of prose. There are some small annotations or corrections in the text, such as "بسم الله" and "الحمد لله".

Handwritten text in Arabic script, likely a religious or philosophical treatise. The text is written in a cursive style and is contained within a rectangular border. The script is dense and fills most of the page.

Handwritten text in Arabic script, likely a religious or philosophical treatise. The text is written in a cursive style and is contained within a rectangular border. The script is dense and fills most of the page. There are several small annotations or corrections written above the main lines of text, including the word "استاذ" (teacher) and "استاذ" (teacher) written vertically.

Handwritten text in Arabic script, likely a religious or philosophical treatise. The text is written in a cursive style and includes several lines of verse or prose. There are some marginalia or small annotations interspersed within the main text.

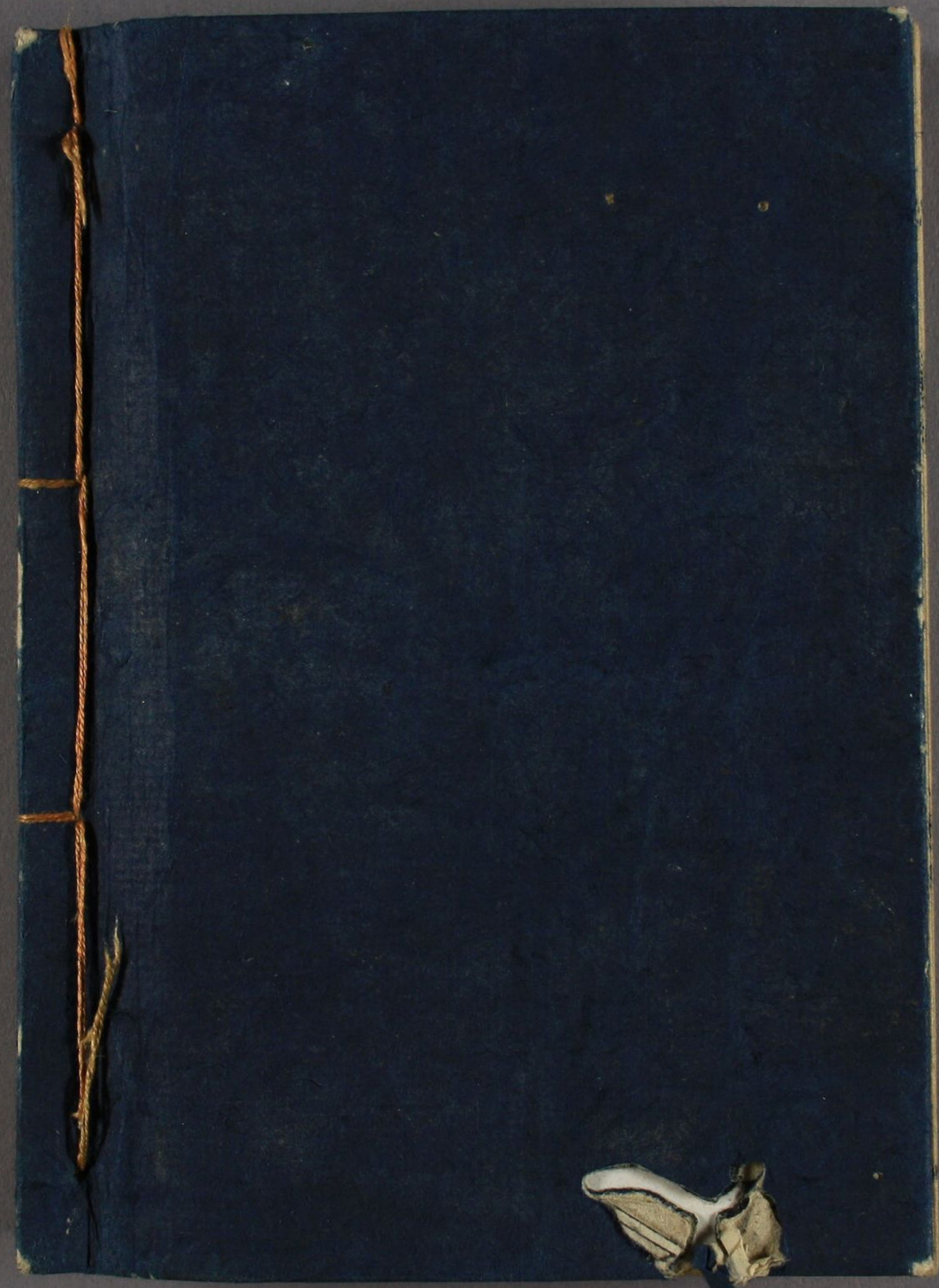
Handwritten text in Arabic script, continuing the text from the previous page. The script is consistent with the previous page, showing a cursive style with some variations in line length and spacing. There are also some small annotations or marginalia present.

Handwritten text in Arabic script, likely a religious or philosophical treatise. The text is written in a cursive style and is contained within a rectangular border. The script is dense and fills most of the page.

Small vertical text or marginalia on the right side of the page.

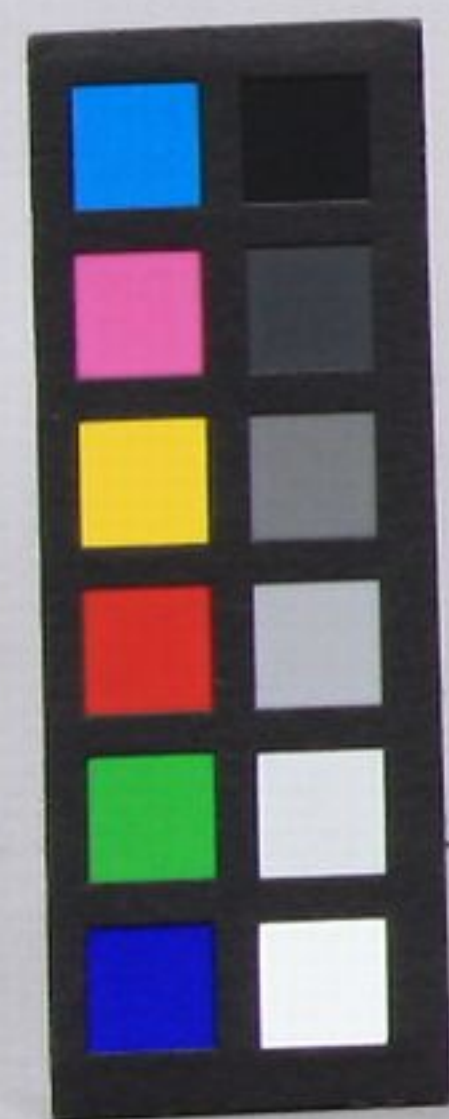
Small vertical text or marginalia on the right side of the page.

Handwritten text in Arabic script, likely a religious or philosophical treatise. The text is written in a cursive style and is contained within a rectangular border. The script is dense and fills most of the page.





源氏物語
万治頃版 小本 三十冊



源氏物語

。 万治頃版 小本 三冊

