





石渠寶笈











Handwritten text in Arabic script, likely a religious or historical document. The text is written in a cursive style and spans approximately 12 lines across the page.

Handwritten text in Arabic script, likely a religious or historical document. The text is written in a cursive style and spans approximately 12 lines across the page.















Handwritten text in a cursive script, likely a form of Arabic or Persian calligraphy, consisting of approximately 14 lines of text.

Handwritten text in a cursive script, likely a form of Arabic or Persian calligraphy, consisting of approximately 14 lines of text.



























Handwritten text in Arabic script, consisting of approximately 14 lines of dense, cursive writing.

Handwritten text in Arabic script, consisting of approximately 14 lines of dense, cursive writing.



Handwritten text in a cursive script, likely a letter or document, written on the right page of an open book. The text is arranged in approximately 12 horizontal lines, flowing from right to left across the page. The ink is dark and the paper shows signs of age.

Handwritten text in a cursive script, likely a letter or document, written on the left page of an open book. The text is arranged in approximately 12 horizontal lines, flowing from right to left across the page. The ink is dark and the paper shows signs of age.























































Handwritten text in a cursive script, likely a historical document or manuscript. The text is written in a dark ink on aged, yellowish paper. It consists of approximately 12 lines of text, with some lines starting with a decorative flourish or initial letter. The script is dense and characteristic of early modern European handwriting.

Handwritten text in a cursive script, likely a historical document or manuscript. The text is written in a dark ink on aged, yellowish paper. It consists of approximately 12 lines of text, with some lines starting with a decorative flourish or initial letter. The script is dense and characteristic of early modern European handwriting.

























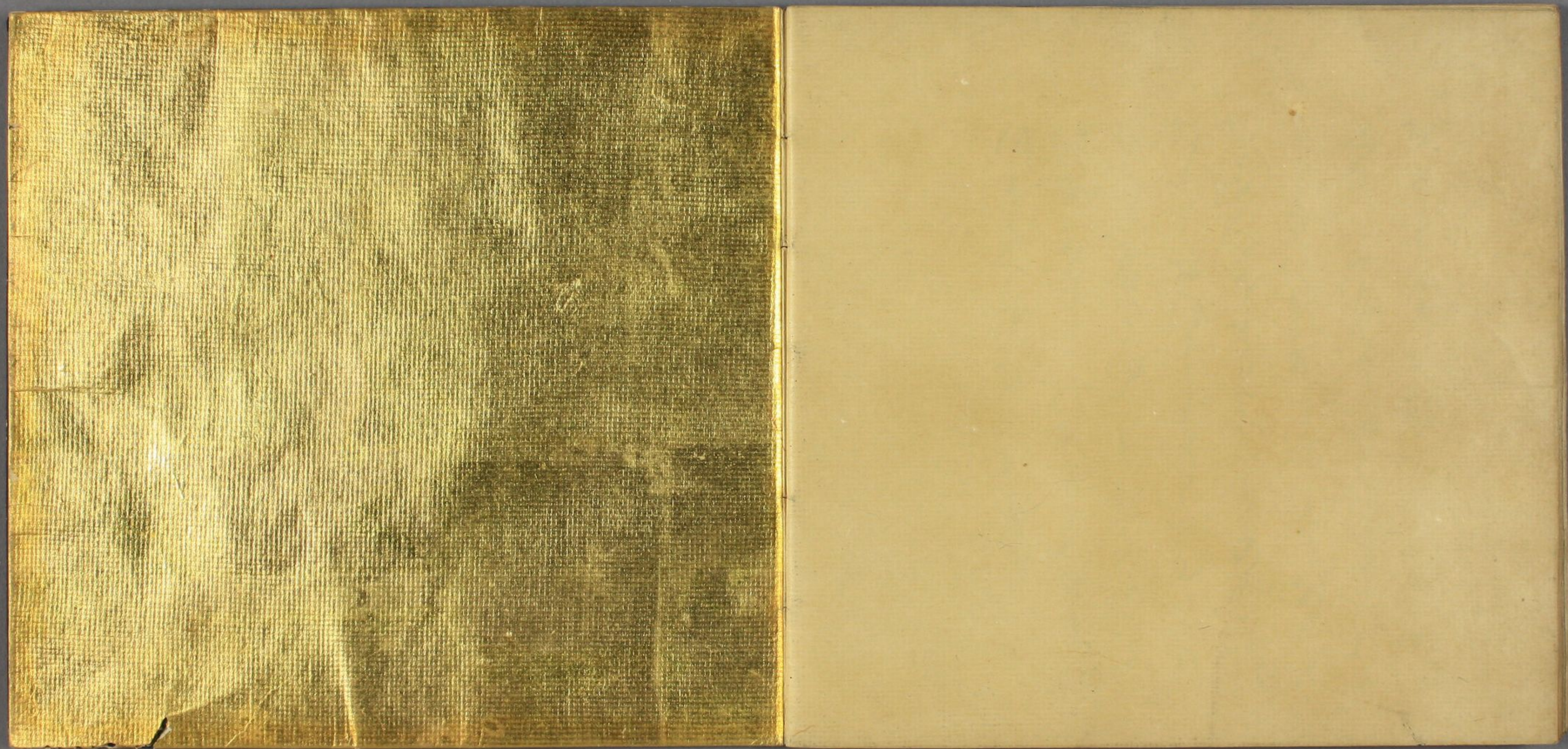




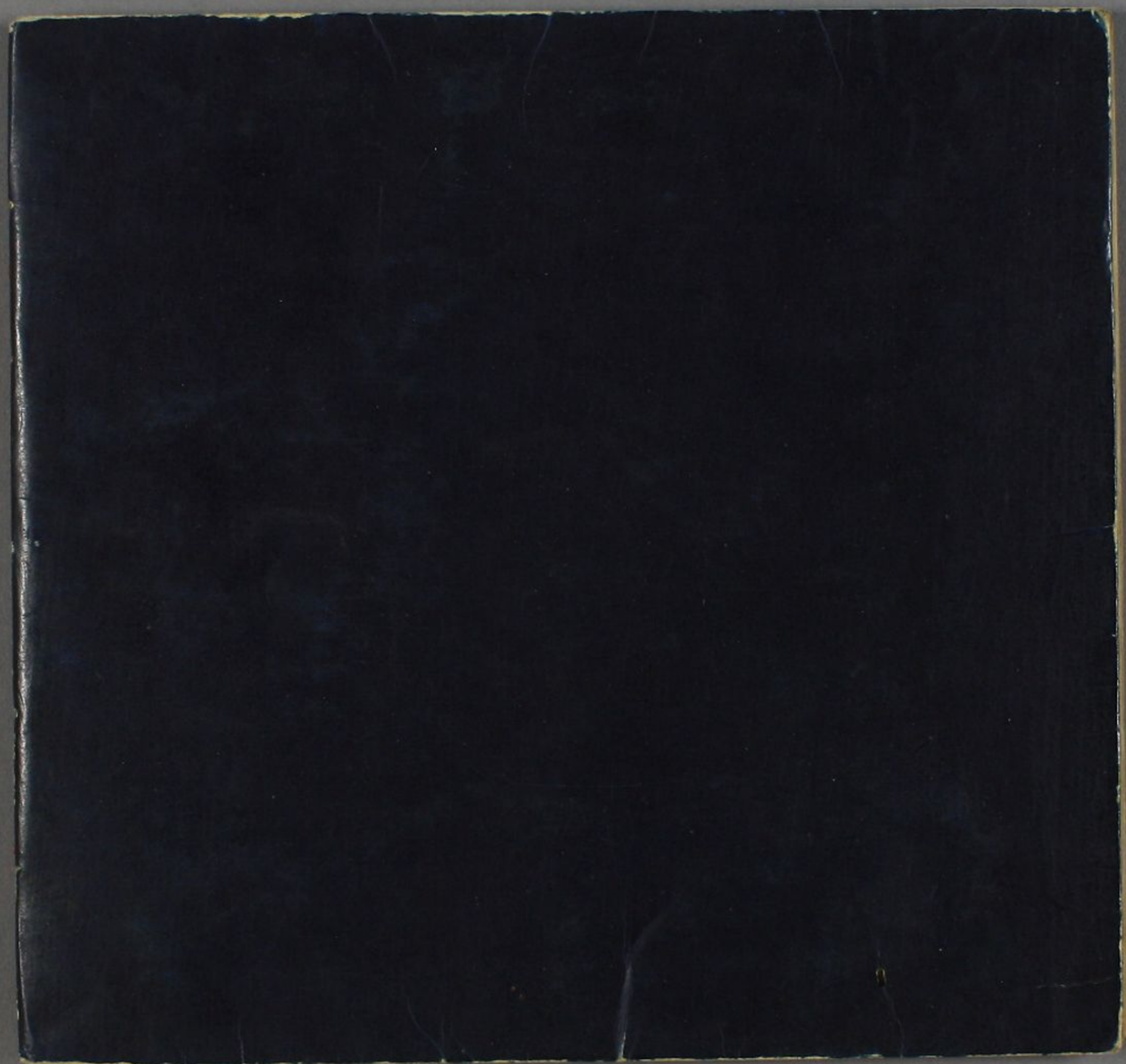


Handwritten text in a cursive script, likely a letter or a page from a manuscript. The text is written in a dark ink on aged, yellowish paper. The script is dense and flowing, characteristic of a cursive hand. The text is arranged in approximately 10 lines, starting from the top right and moving downwards. The first line begins with a large, decorative initial letter. The text appears to be a personal or official communication, possibly a letter or a page from a manuscript. The handwriting is consistent throughout, with clear letter formation and fluid connections between letters. The paper shows signs of age, including slight discoloration and a few small spots. The overall appearance is that of a well-preserved historical document.

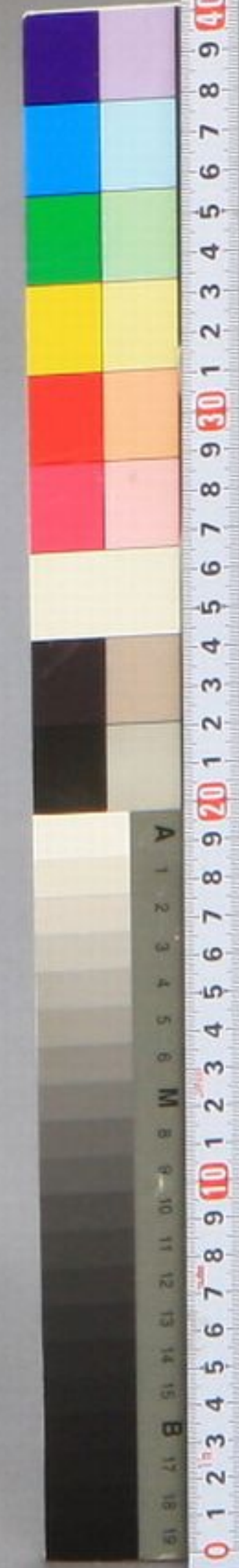
















源氏物語

