

睿光帖

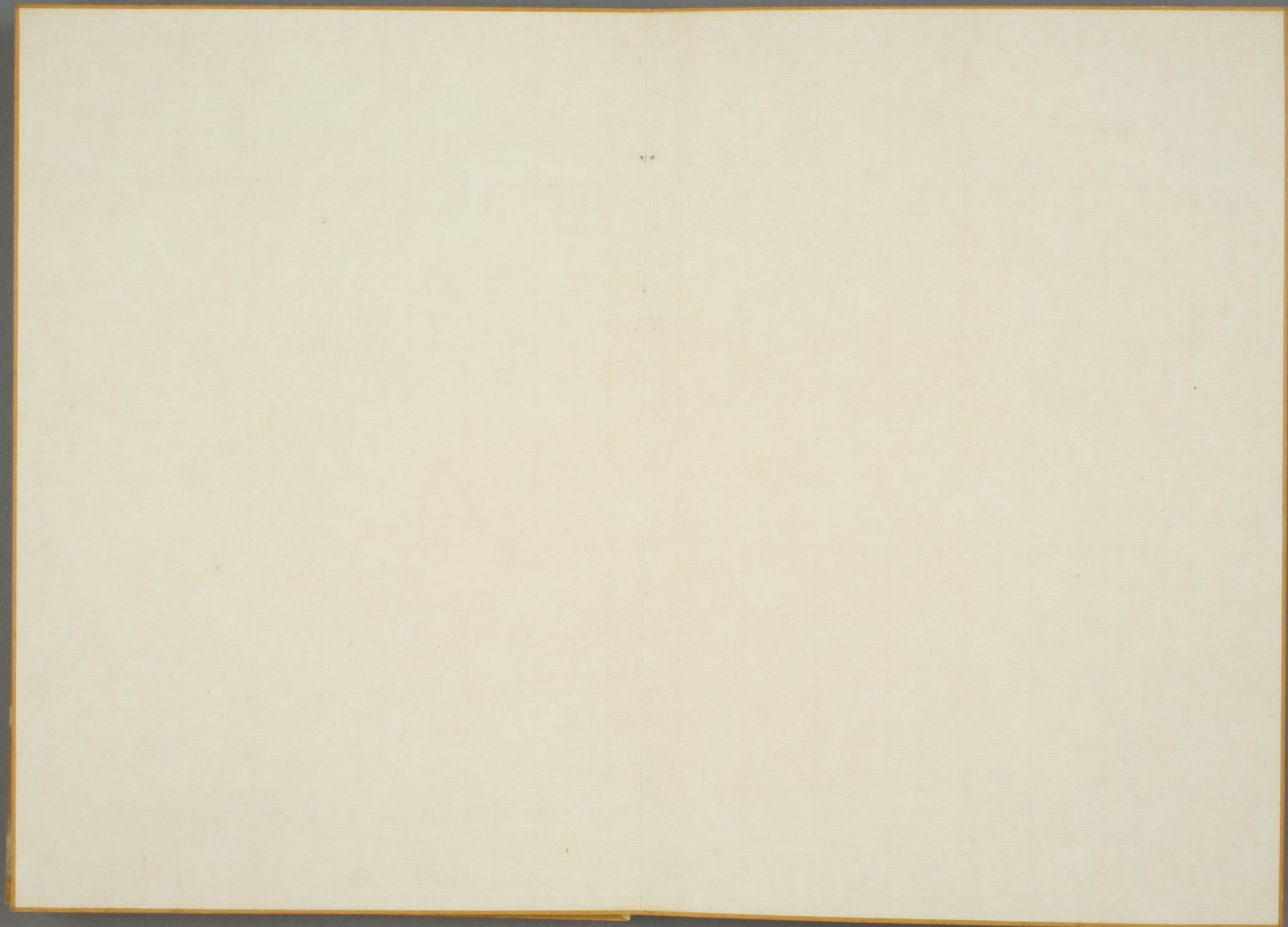
土岐文庫
文庫17
特 W225
1

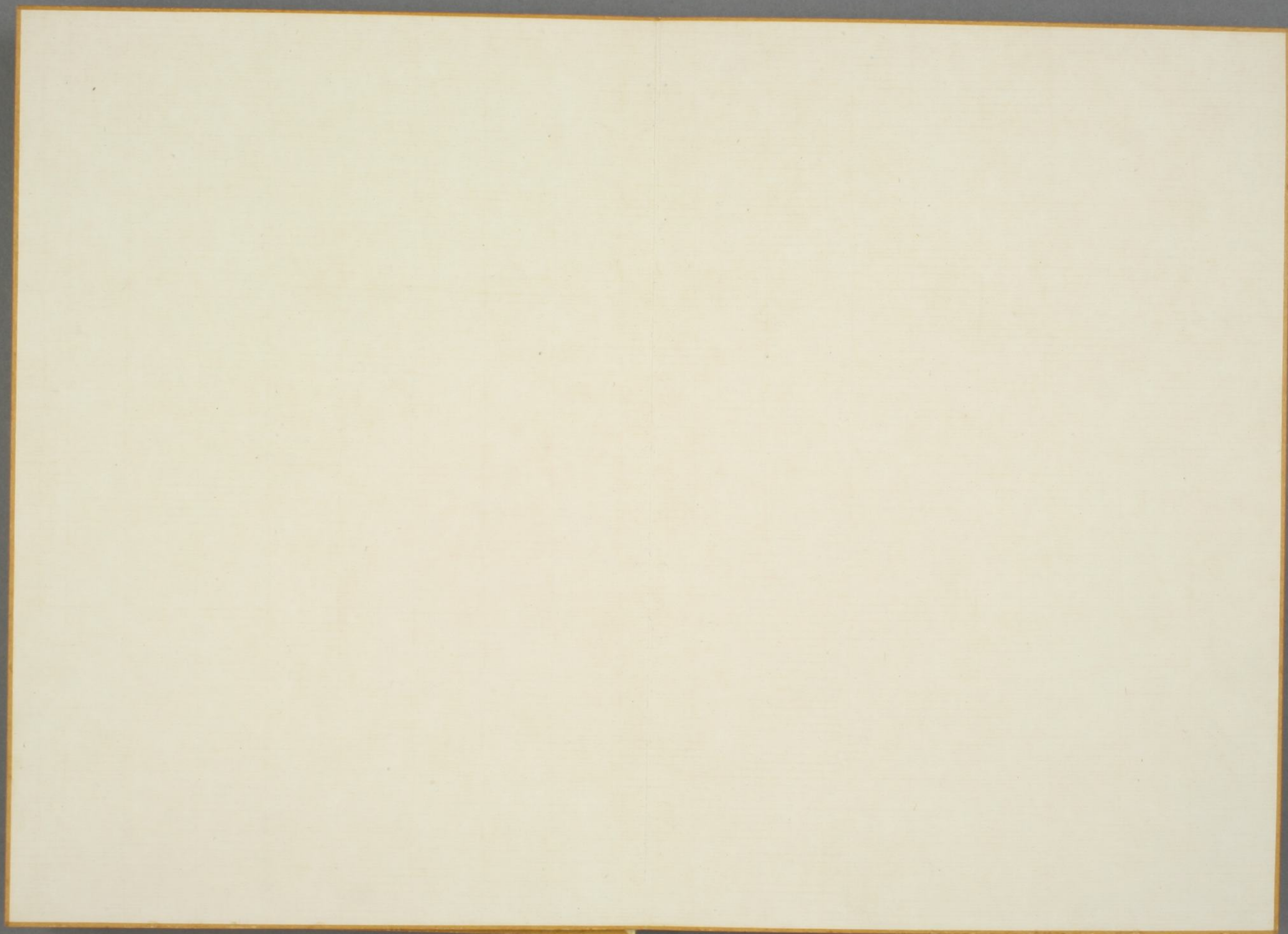


文庫17
W225



010185196750





土岐のの 道行

を祝して

あ ば かの 下

心さハハあ

見入リはこ

トナウの 司 哉

君も 兒る べし

哉

二三詩

きんぎょのうた

舟にゆき

きんぎょのうた

きんぎょのうた

きんぎょ

早歸來否
維之祝



十月生

Handwritten characters in the top row, including a large stylized character on the left and several smaller characters to its right.

Handwritten characters in the middle row, featuring a vertical stroke with a hook on the left, a character with a dot, and a character with a large loop.

Handwritten characters in the lower middle section, including a vertical stroke with a hook and a character with a large loop.

Handwritten characters in the rightmost column, consisting of a vertical stroke with a hook and a character with a large loop.

るしとすすあくあ
五月こあやめく十
あやめ子志らぬん
七する可あ

あやめ

いふやこわ

飛智のみ瀧乃

大まきわ

見ろわす

たか

たか

順

msc

Handwritten cursive script

Handwritten cursive script

Handwritten cursive script

Handwritten cursive script

Handwritten cursive script

Handwritten cursive script

Handwritten cursive script

Handwritten cursive script

Handwritten cursive script

Handwritten cursive script

東聲

寂
さび

酒
さけ

のむ

さ

く
ひ

し
か

う
た

あ
ら

さ
ら

街
まち



Handwritten text in a cursive script, oriented vertically on the right page of the notebook. The text is written in black ink and appears to be a name or a short phrase, possibly "L. B. ...".

Handwritten Japanese calligraphy in cursive style (sōsho) on a two-page spread. The characters are arranged in vertical columns, reading from right to left. The right page contains approximately 10 characters, and the left page contains approximately 10 characters. The ink is dark and the paper is aged and slightly yellowed.

ひしきしきを

待て来ぬ印す

くしき

二年

其朝

右寒の

首のいりやよ

細じな

著

當家 小塘沼 竊思形以

韜未延 又南開 兵楫帆

紛運 今不在 什一 處處

水區 匪跡 日黃 穰種

田畦 熟以 叔答 德二

平裁 已一 方一 訪袖

霜印 鴨羽 金 談簿

衣權 雜

塘 塘 王村 在小 塘 沼地

錄

