

10

15

20

日本  
起立工商會社

**KIRU KOSHIO KUWAISHA**  
THE FIRST JAPANESE  
MANUFACTURING AND TRADING COMPANY.

**BRONZES, LACQUERED,**  
**POTTERY AND PORCELAIN WARES.**

TEA, SILK, CURIOSITIES  
AND  
OTHER JAPANESE MANUFACTURES.

No. 16 TAKEKAWACHO,  
**TOKIO, JAPAN.**

坐東京  
竹川銀

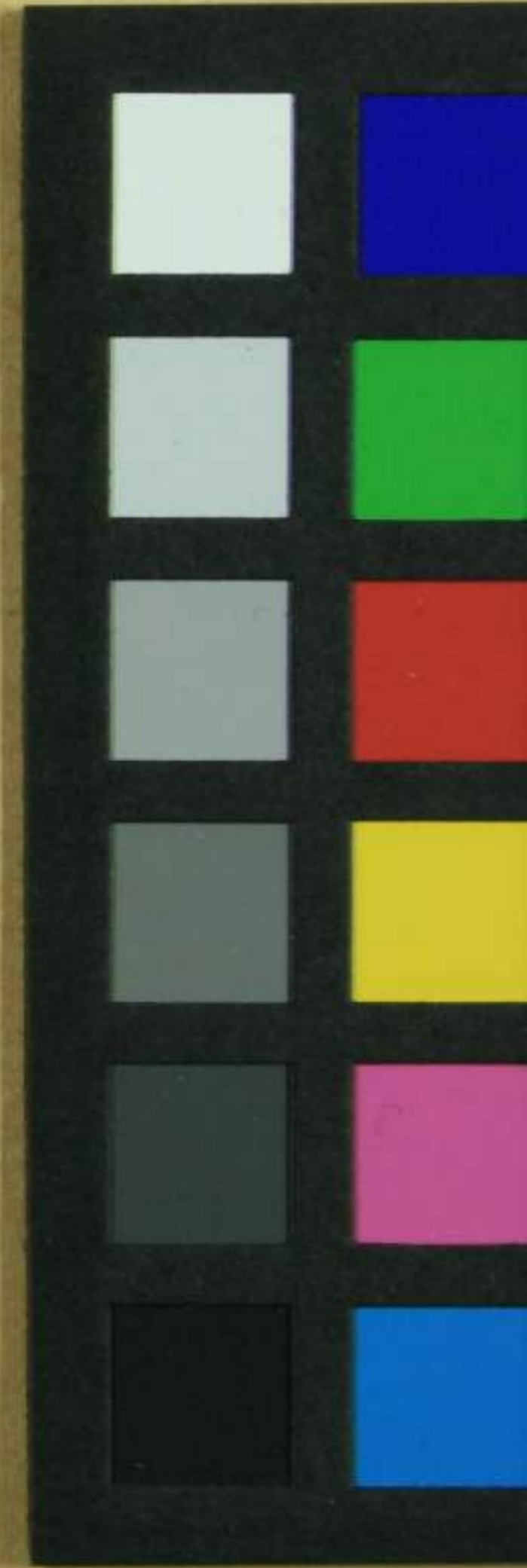
町第十  
六番地

ENGLISH CORRESPONDENTS  
ALEXANDRIA PALACE PARK CO.  
MUSWELL HILL,  
LONDON.

BRANCH HOUSE  
SUMPYA  
HONGKONG.

AUSTRIAN AGENT,  
C. TOROU.  
WALLZEILLE No.1.  
VIENNA.

WILLIAM MANN, LITHOGRAPHER, 529 MARKET ST., PHILADELPHIA, U.S.A.





Our firm, Kiriū Kosho Kuwaisha, (The First Japanese Manufacturing and Trading Company,) is established for the purpose of encouraging the Japanese industries, and of promoting the greatest possible perfection therein.

Kan Gio Rio, (the Bureau of Industry,) fully co-operates with our firm, and we are authorized by that Bureau to sell all the Teas they manufacture.

Fancy and useful articles, of the finest as well as the cheapest quality, sold at the lowest possible prices, Wholesale and Retail.

Orders by mail promptly attended to.

(SEE OTHER SIDE.)

