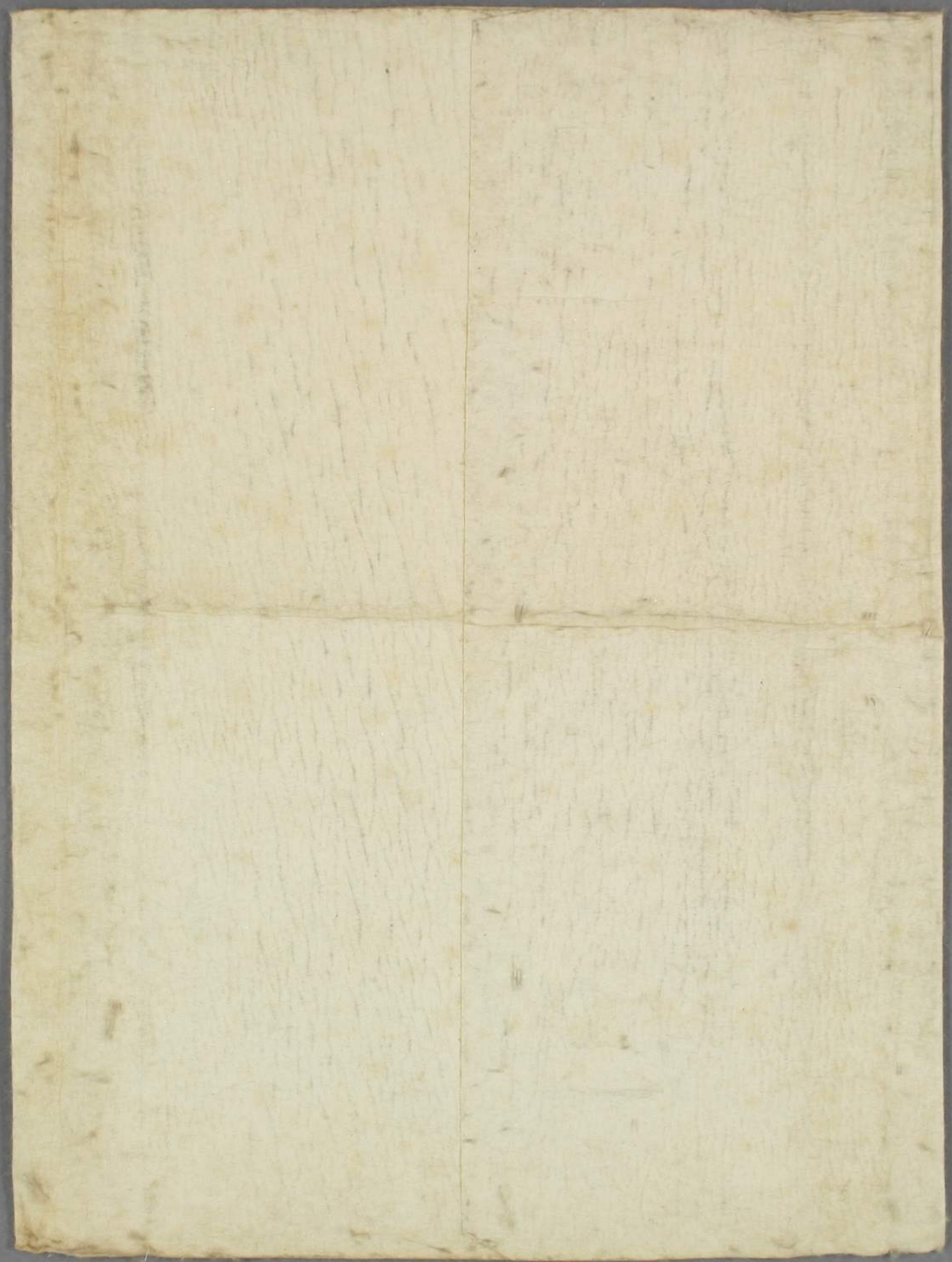
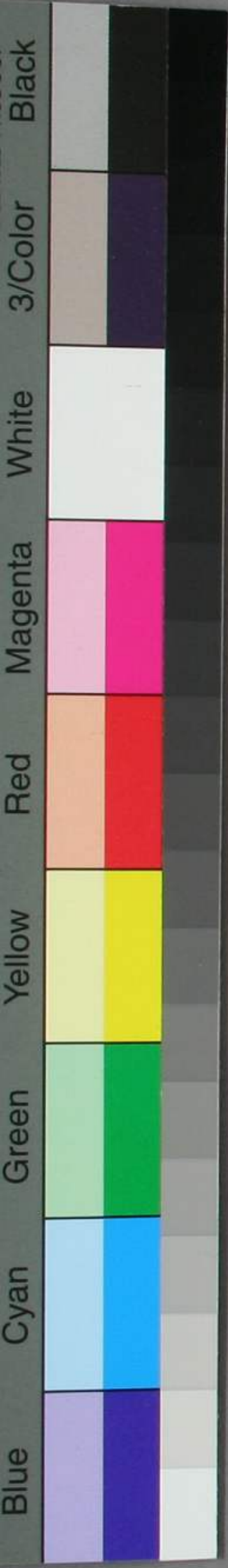


明月抄  
丁  
謝野野子





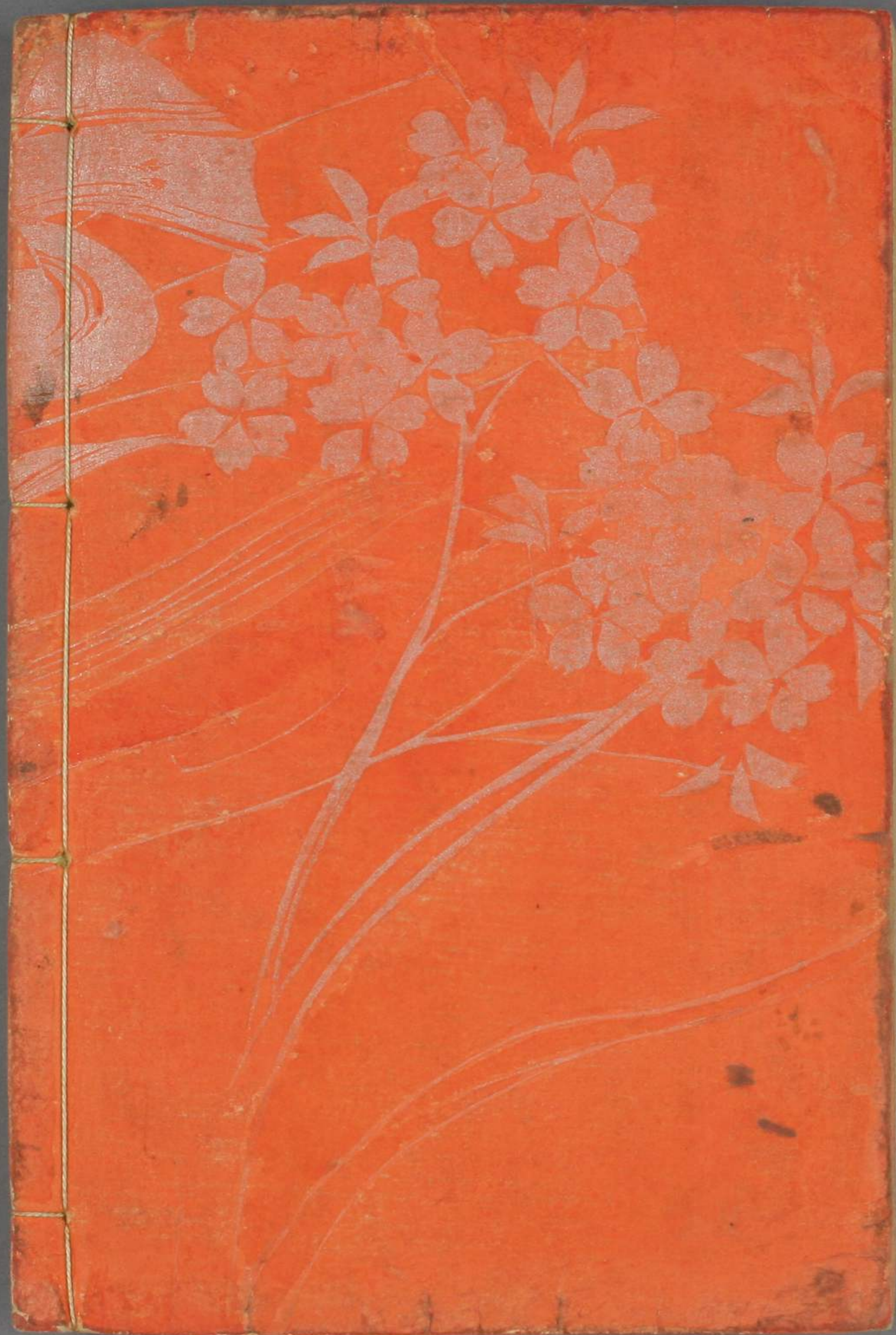




明星抄  
二





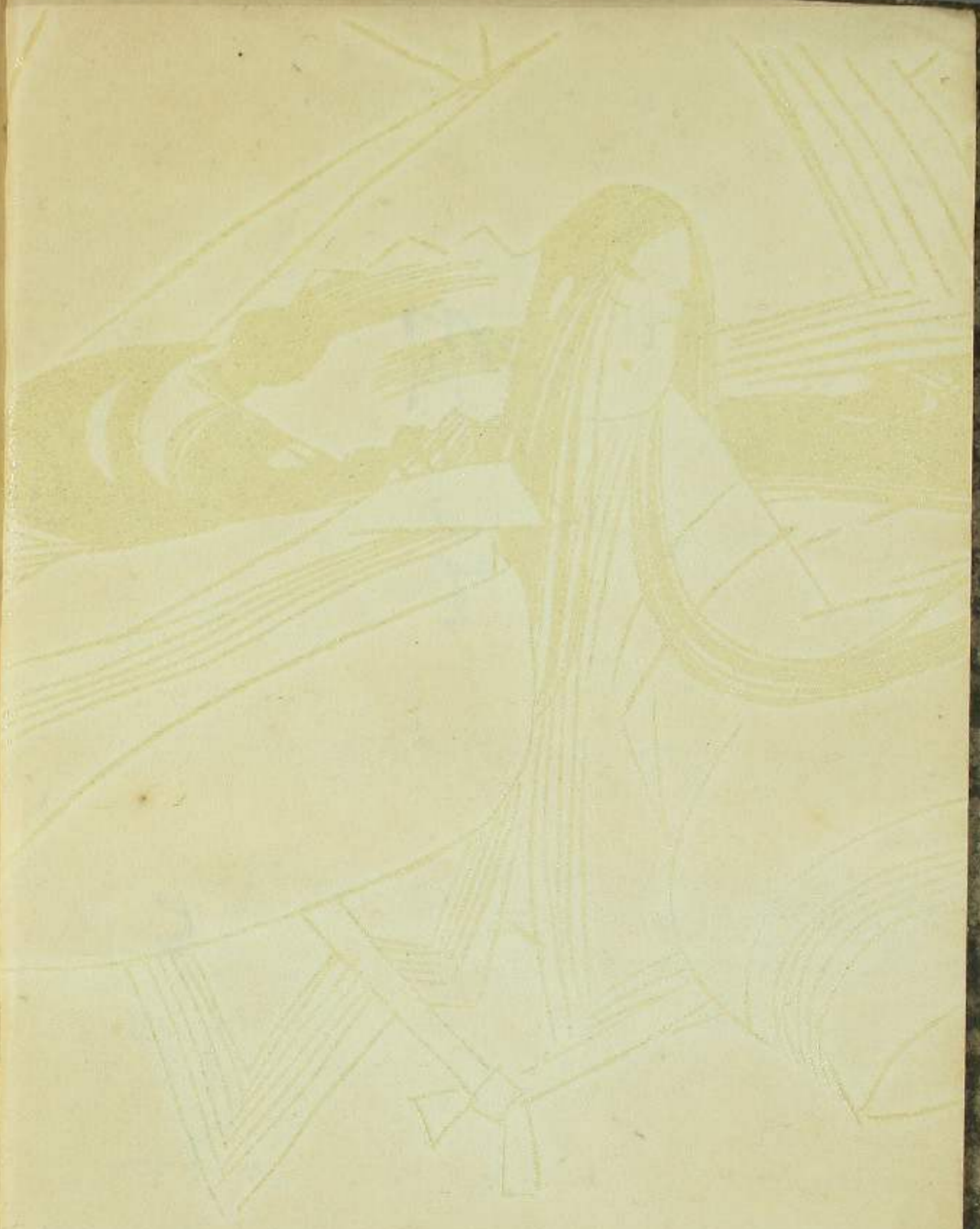


明  
皇  
子

三

与  
谢  
野  
子

たの  
み  
初念  
ま  
わ  
ら  
ひ  
あ  
は  
れ  
の  
こ  
え  
の  
う  
た  
を  
う  
た  
へ  
て  
し  
ま  
し  
た  
と  
い  
ふ  
こ  
と  
が  
あ  
ら  
ま  
り  
の  
こ  
え  
の  
う  
た  
を  
う  
た  
へ  
て  
し  
ま  
し  
た  
と  
い  
ふ  
こ  
と  
が  
あ  
ら  
ま  
り





道々水々々々々々々々  
そと耳々々々々々々々

~~~~~  
~~~~~  
~~~~~

蝶々々々々々々々  
~~~~~  
~~~~~  
~~~~~

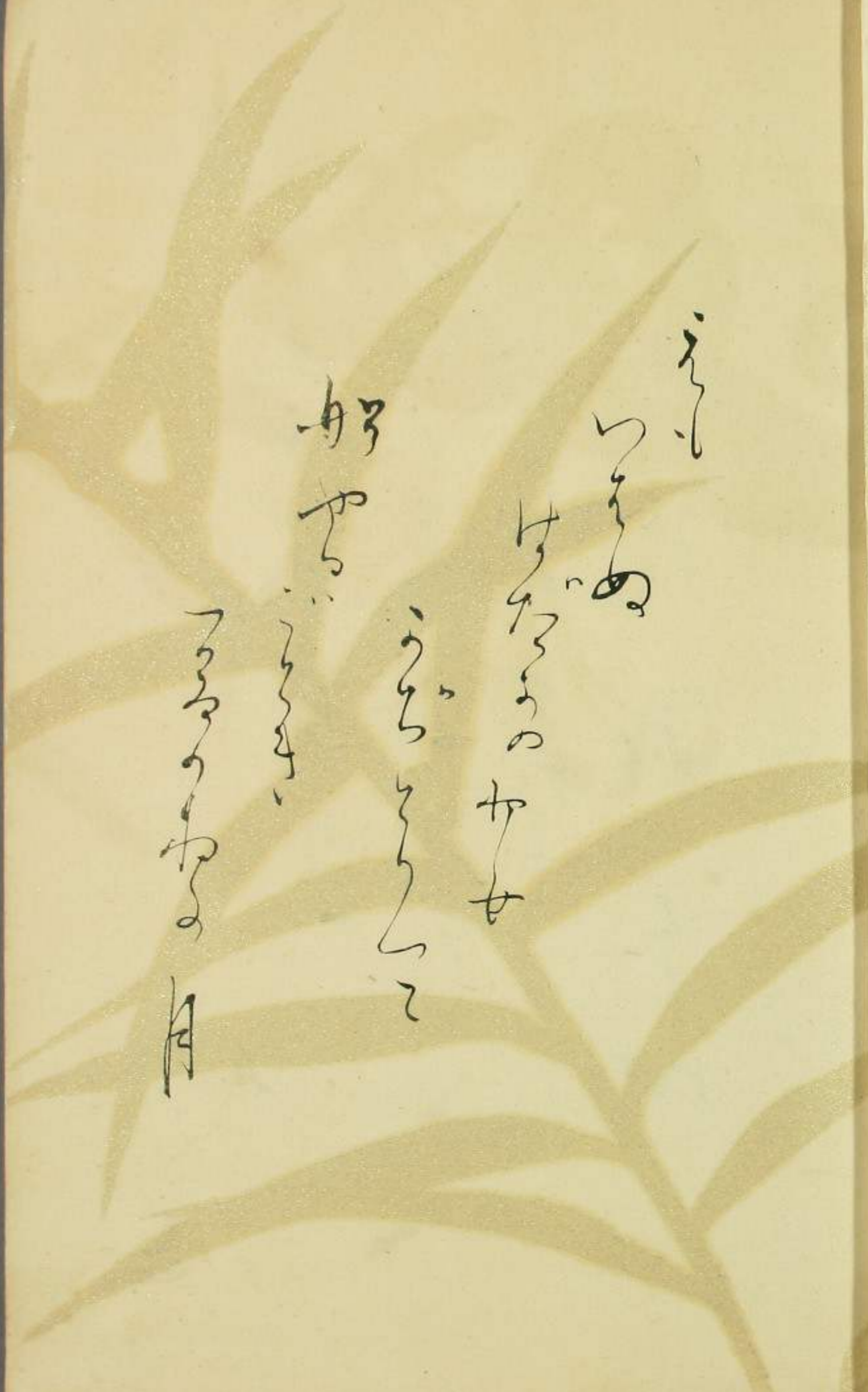
~~~~~  
~~~~~  
~~~~~  
~~~~~  
~~~~~  
~~~~~  
~~~~~  
~~~~~  
~~~~~

Handwritten notes on the left page, including the characters 水 (water) and 火 (fire), and various scribbled lines and symbols.

Handwritten notes on the right page, featuring a large green ink wash or stamp that partially obscures the text. The visible text includes characters such as 火 (fire) and 水 (water).

うきうき  
おもしろ  
い  
おもしろ  
い  
おもしろ  
い  
おもしろ  
い

おもしろ  
い  
おもしろ  
い  
おもしろ  
い  
おもしろ  
い



い

い

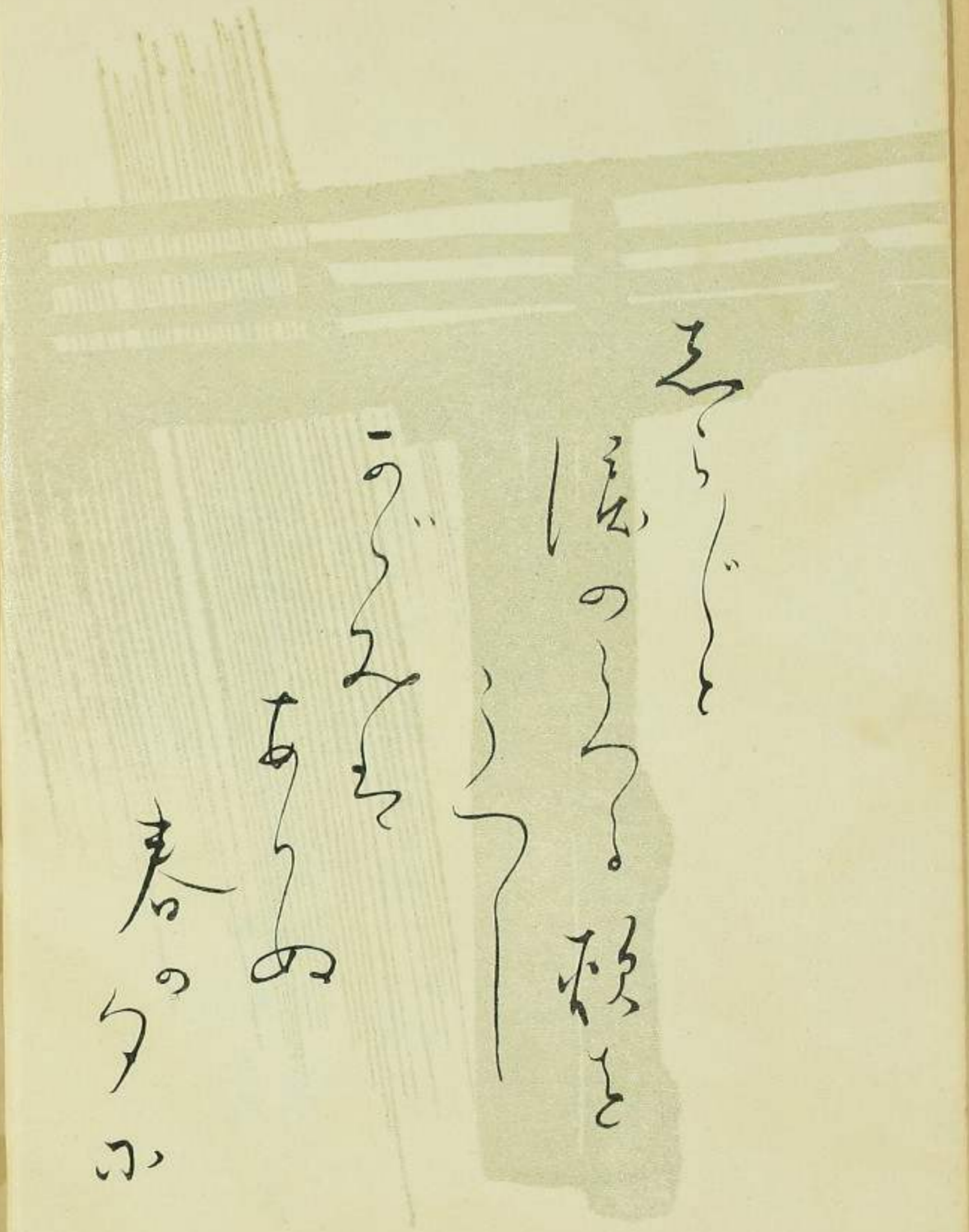
い

い

い

い

い



い

い

い

い

い

い

あはれなる  
まのあはれなる  
あはれなる  
あはれなる

あはれなる  
あはれなる  
あはれなる  
あはれなる

Handwritten musical notation on the left page, featuring several vertical staves with notes and clefs. The notation is written in black ink on aged, yellowed paper. The background of the page has a faint, light green floral or leaf pattern.

Handwritten musical notation on the right page, featuring several vertical staves with notes and clefs. The notation is written in black ink on aged, yellowed paper. The background of the page is plain.

Handwritten musical notation on the right page, consisting of several lines of notes and rests.

Handwritten musical notation on the left page, including a large clef-like symbol at the top and several lines of notes.

自來水

水

水

水

水

水

水

水

水



地々々々々々々々々々々々  
うあといぬを子の本  
うらむのうらむ  
うらむ

おとととととととととととと  
うらむうらむうらむうらむ  
うらむうらむうらむうらむ  
うらむ

Handwritten notes on the left page, including a vertical line of text and several wavy lines.

Handwritten notes on the right page, including a vertical line of text and several wavy lines.

20  
Pencil

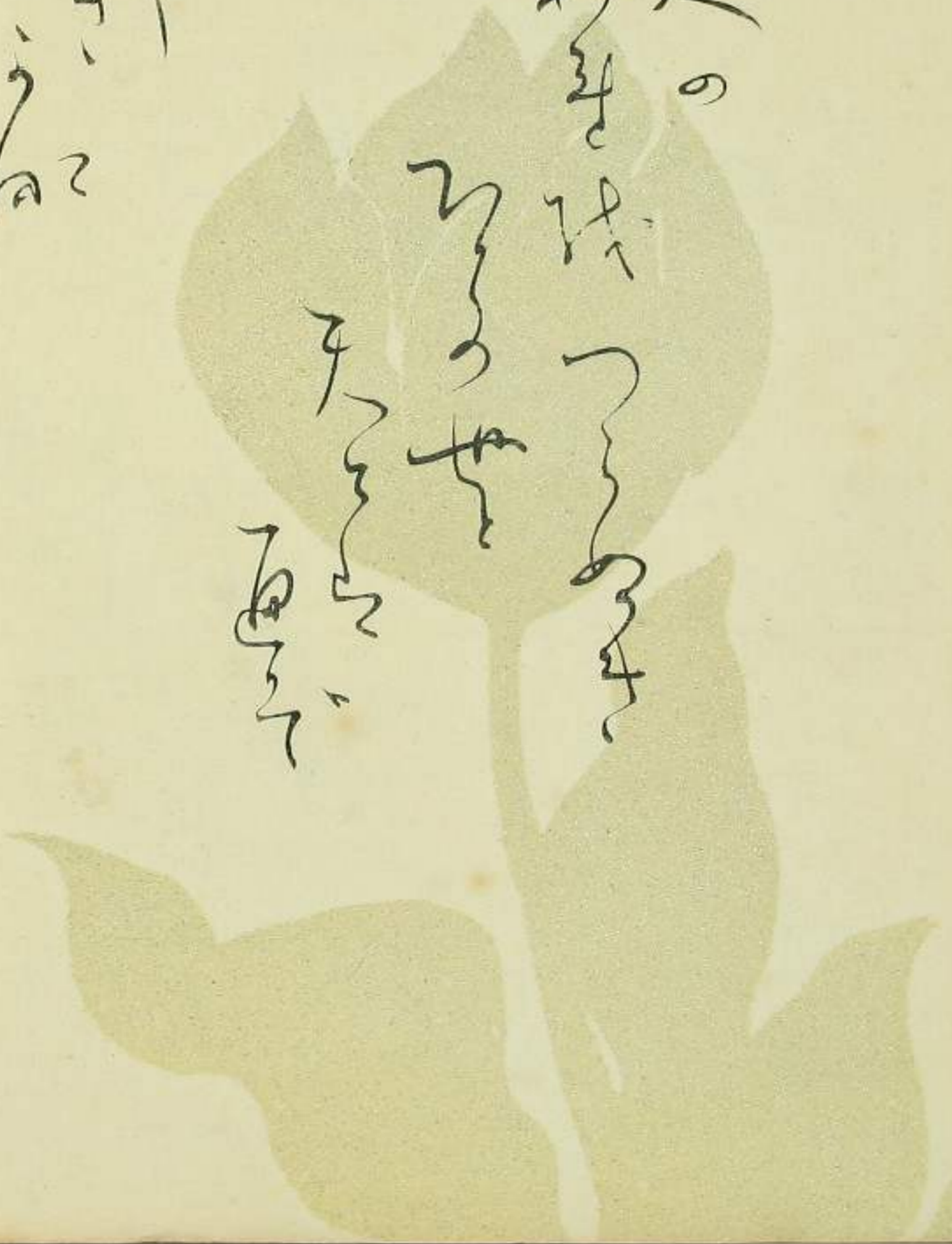
Handwritten notes in cursive script, possibly a list or a single entry.

Handwritten notes in cursive script, possibly a list or a single entry.

Handwritten notes in cursive script, possibly a list or a single entry.

記  
信  
と  
の  
月  
の  
柳  
と  
折  
と  
あ  
ま  
ら  
ま  
あ  
ま  
ら  
ま

記  
信  
と  
の  
月  
の  
柳  
と  
折  
と  
あ  
ま  
ら  
ま  
あ  
ま  
ら  
ま



詞の  
つぎ  
つぎ  
つぎ  
つぎ  
つぎ  
つぎ  
つぎ

つぎ  
つぎ  
つぎ  
つぎ  
つぎ  
つぎ  
つぎ  
つぎ  
つぎ

山一々ゆるぎ都々  
み々のえ朝つゝ  
鐘のび  
たげれ

あまの  
あまの  
あまの  
あまの  
あまの  
あまの  
あまの

Handwritten musical notation on the left page, consisting of several lines of notes and rests.

Handwritten musical notation on the right page, including notes, rests, and a large decorative floral watermark in the background.

目録  
朝  
お  
り

三  
口  
ち  
あ  
し  
り



い  
い  
い  
い  
い

い  
い  
い  
い  
い

い  
い  
い  
い  
い

い  
い  
い  
い  
い

い  
い  
い  
い  
い

い  
い  
い  
い  
い

い  
い  
い  
い  
い

い  
い  
い  
い  
い

い  
い  
い  
い  
い

い  
い  
い  
い  
い

い  
い  
い  
い  
い

い  
い  
い  
い  
い

伊人の書

たのしみ

たのしみ

たのしみ

たのしみ

伊人の書

たのしみ

たのしみ

たのしみ

たのしみ

たのしみ

たのしみ

Amico  
San Gerardo  
Paris - Antoinette

Amico  
~~~~~

Amico  
~~~~~

春の朝

海馬や

~~~~~  
~~~~~

~~~~~  
~~~~~

~~~~~  
~~~~~

ふのふき

はらたの  
こころ

木のこころ

うきうきはら

まのこころ

あふきのこころ

あふきのこころ

あふきのこころ

あふきのこころ

2004.5.6

かきくくくく

相

そ

わ

た

あ

朝

わ

わ

あ

あ

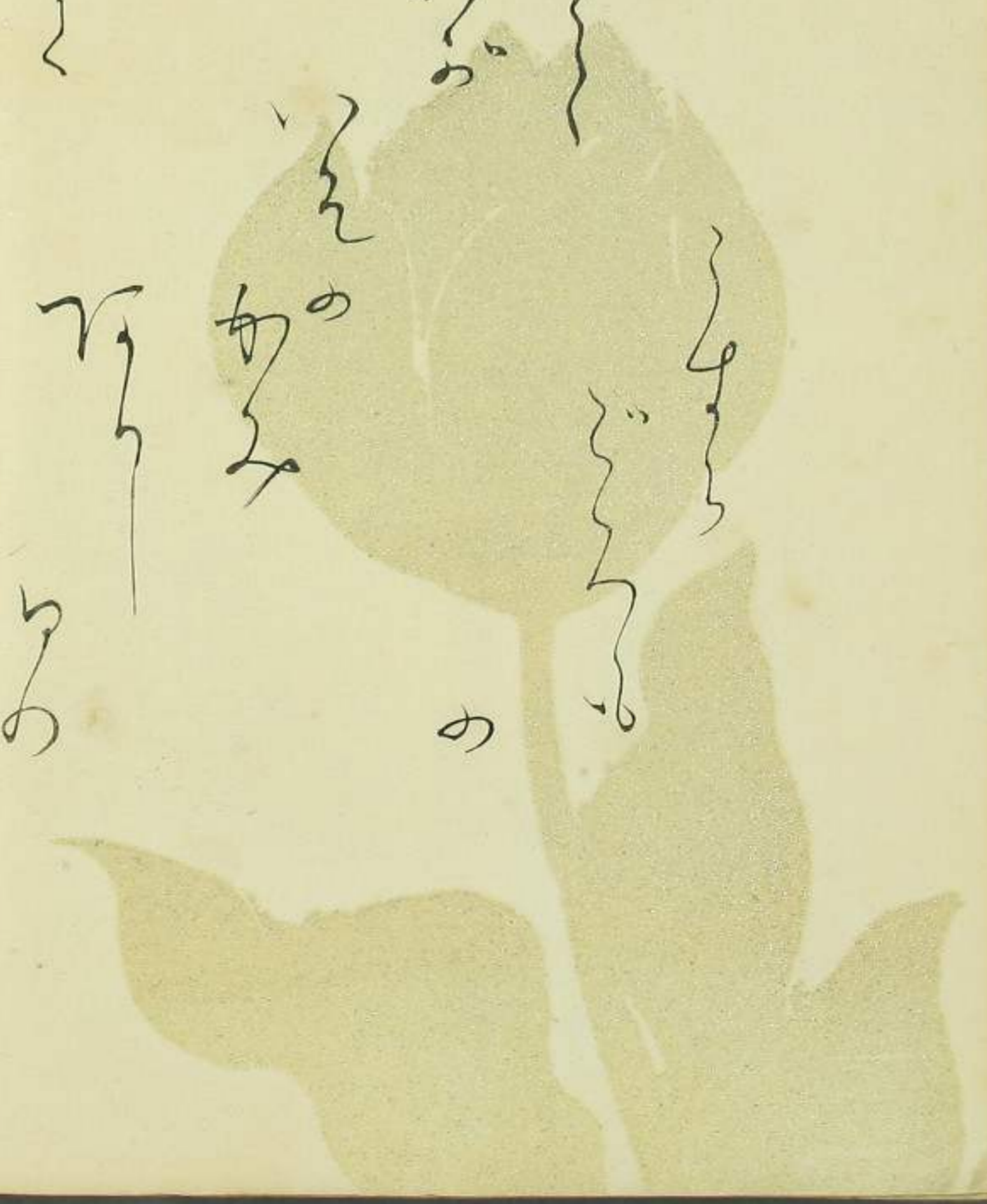
あ

あ

あ

Handwritten Japanese text on the left page, including characters like 衣 (clothing), ぬ (particle), and 下 (under).

Handwritten Japanese text on the right page, including characters like 衣 (clothing), ぬ (particle), and 下 (under).



水

いかにあふ

らるるるる

たはるるるる

るるるる

天王寺

るるるる

待

るるる

るるる

る

下の

る

Handwritten notes on the left page, including a large 'S' at the top, a vertical line, and several wavy lines.

Handwritten notes on the right page, featuring a vertical line, a wavy line, and several other scribbled marks.



Handwritten notes in cursive script on the left page, including a large '11' at the top and various illegible characters.

Handwritten notes in cursive script on the right page, including a large '11' at the top and various illegible characters.

Handwritten musical notation on the left page, consisting of three staves of notes and rests.

Handwritten musical notation on the right page, consisting of five staves of notes and rests.

おのゝこゝろ

あつめ

あつめ

あつめ

あつめ

滯念やふるけふ此ど

新也年比と美男小

おとす百石を三ころ

Handwritten musical notation on the left page, including a treble clef, a key signature of one sharp (F#), and several lines of notes with stems and beams. The notation is written in a cursive, handwritten style.

Handwritten musical notation on the right page, including a treble clef, a key signature of one sharp (F#), and several lines of notes with stems and beams. The notation is written in a cursive, handwritten style.

Handwritten Japanese text in cursive style (sōsho) on the left page. The characters are arranged in several vertical columns, starting from the right side of the page and moving left. The text is somewhat faint and difficult to decipher precisely, but appears to be a collection of characters and short phrases.

Handwritten Japanese text in cursive style (sōsho) on the right page. The text is arranged in several vertical columns, starting from the right side of the page and moving left. The characters are more distinct than on the left page, though still in a highly stylized script. The text appears to be a continuation or a separate entry related to the left page.

Handwritten musical notation on the right page, consisting of three staves of notes and rests.

Handwritten musical notation on the left page, consisting of several staves of notes and rests, including a section with a treble clef.

牡丹

しる

はな

はな

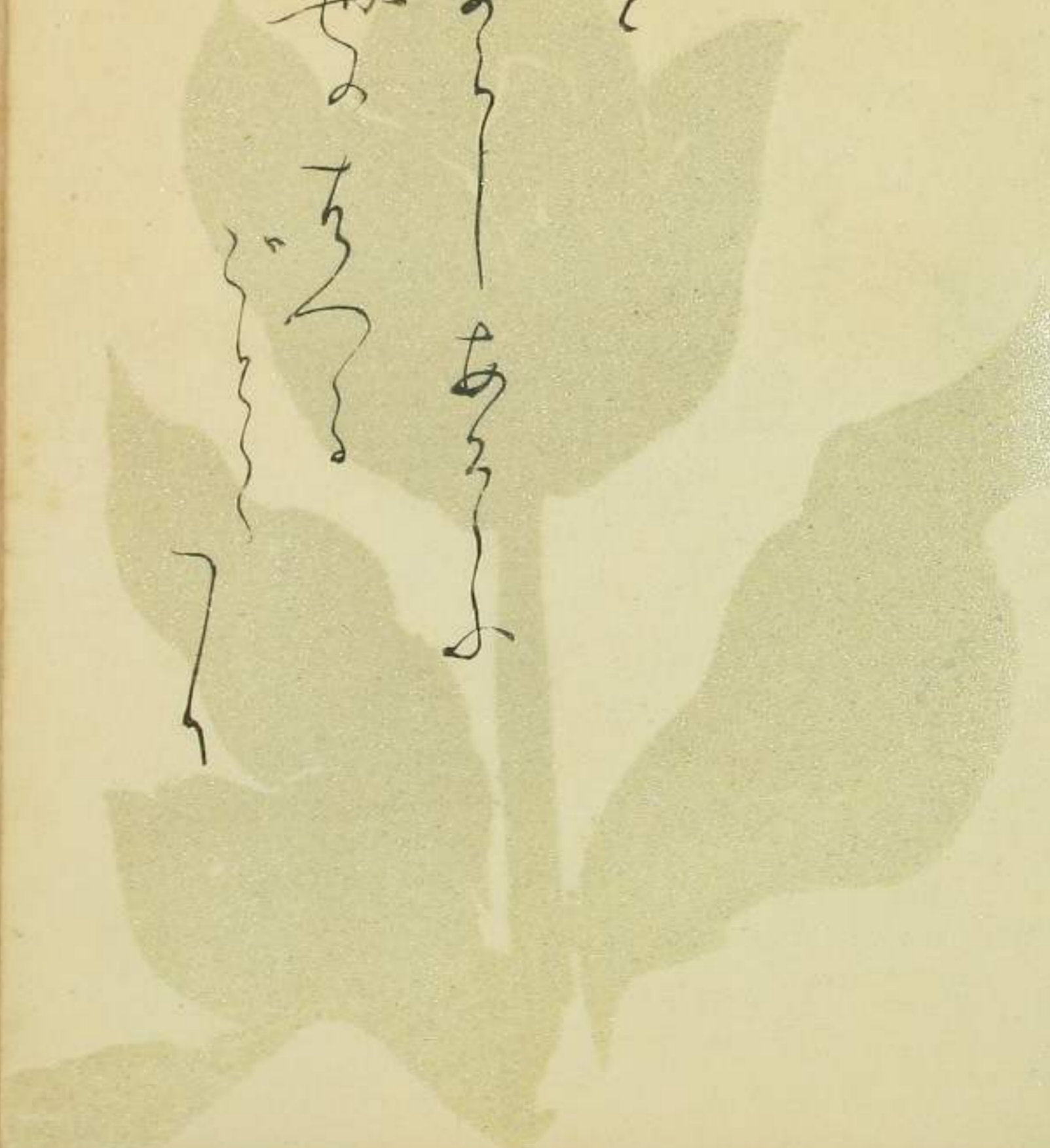
はな

はな

はな

はな

はな



はな

はな

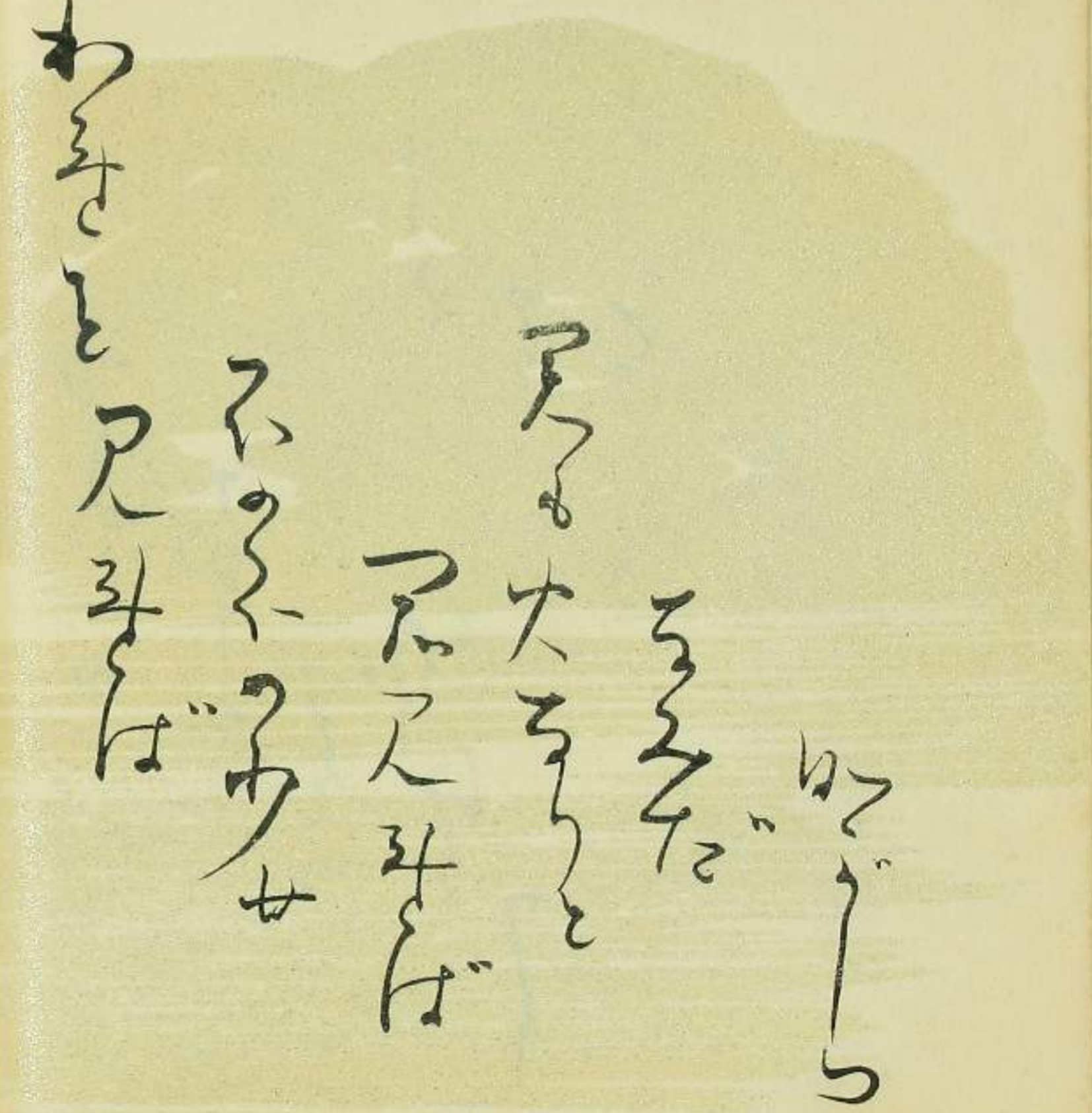
はな

はな

はな

はな

はな









まゝのまゝ  
まゝのまゝ  
まゝのまゝ

まゝのまゝ  
まゝのまゝ  
まゝのまゝ

かののふ  
 あゝの  
 なるの  
 るるの  
 かの  
 かの  
 かつく

かの  
 潮のさ  
 るるの  
 かの  
 かの  
 かの



夏のよ

あのもねの

たち

ね

あはれ

あはれ

あはれ

あはれ

あはれ

あはれ

あはれ

あはれ

あはれ

あはれ

り構の

文のつれづれ

水たけら

庭の

まらけら

く

はゆき

まらけら

お

まらけら

海

朝の暁

うきうき

サカサカ

父の母の

昔の昔の昔の昔の

海

りぬ

Handwritten notes in Arabic script on the left page, including a large initial letter 'L' and several lines of text.

Handwritten notes in Arabic script on the right page, including a large initial letter 'L' and several lines of text.



冬もつらき 毒城の

山腹の雲おひ

ふきき 木ざう

のうせ

おほき

流し くのうせ

ゆらり くのうせ

のうせ

のうせ

あはれをいふはえり  
あはれをいふはえり  
あはれをいふはえり  
あはれをいふはえり

あはれをいふはえり

あはれをいふはえり

あはれをいふはえり

あはれをいふはえり

あはれをいふはえり

あはれをいふはえり

Handwritten cursive text at the top of the right page.

Handwritten cursive text in the middle of the right page.

Handwritten cursive text below the middle of the right page.

Handwritten cursive text on the left side of the right page.

Handwritten cursive text at the bottom of the right page.

Handwritten cursive text at the top of the left page.

Handwritten cursive text in the middle of the left page.

Handwritten cursive text below the middle of the left page.

Handwritten cursive text on the left side of the left page.

Handwritten cursive text at the bottom of the left page.

Handwritten cursive text at the very bottom of the left page.

Handwritten notes on the left page, including a large wavy scribble at the top, followed by several lines of cursive text. The text appears to be a list or series of entries, possibly related to botanical or geographical observations. The words are difficult to decipher due to the cursive style and some fading.

Handwritten notes on the right page, starting with a large wavy scribble at the top, followed by several lines of cursive text. The text appears to be a list or series of entries, possibly related to botanical or geographical observations. The words are difficult to decipher due to the cursive style and some fading.

うらむ

こほる

あはれ

あはれ

あはれ

あはれ

あはれ

あはれ

あはれ

あはれ

あはれ

~~~~~  
~~~~~  
~~~~~  
~~~~~  
~~~~~

~~~~~  
~~~~~  
~~~~~  
~~~~~  
~~~~~

いさよふか  
いさよふか  
いさよふか  
いさよふか  
いさよふか  
いさよふか  
いさよふか  
いさよふか  
いさよふか  
いさよふか

いさよふか  
いさよふか  
いさよふか  
いさよふか  
いさよふか  
いさよふか  
いさよふか  
いさよふか  
いさよふか  
いさよふか

Handwritten musical notation on the left page, including notes, clefs, and a treble clef.

Handwritten musical notation on the right page, including notes, clefs, and a treble clef.



あさあさあ

あさあさあ

あさあさあ

あさあさあ

あさあさあ

あさあさあ

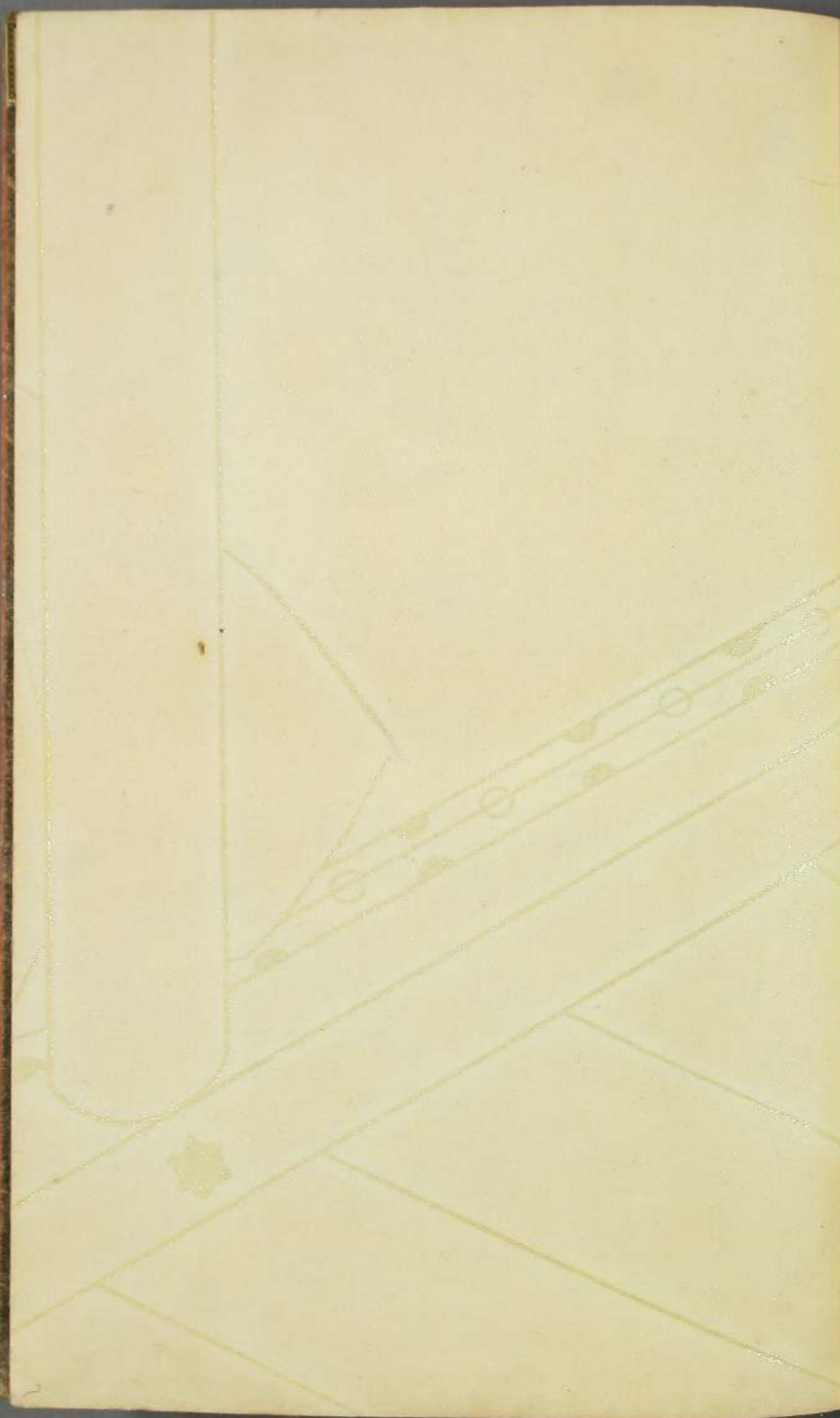
あさあさあ

あさあさあ

あさあさあ

あさあさあ

あさあさあ



Handwritten text in a cursive script, possibly a musical score or a list of notes, located on the right page of the manuscript. The text is written in black ink on aged, yellowed paper. It consists of several lines of characters, some of which appear to be musical notation or shorthand. The characters are written in a fluid, cursive style, typical of historical musical manuscripts. The text is arranged in a vertical column, with the characters flowing from top to bottom. The overall appearance is that of a handwritten musical score or a list of notes.

ISSEIDO  
出神 15% 京華

